

Case Information:

83

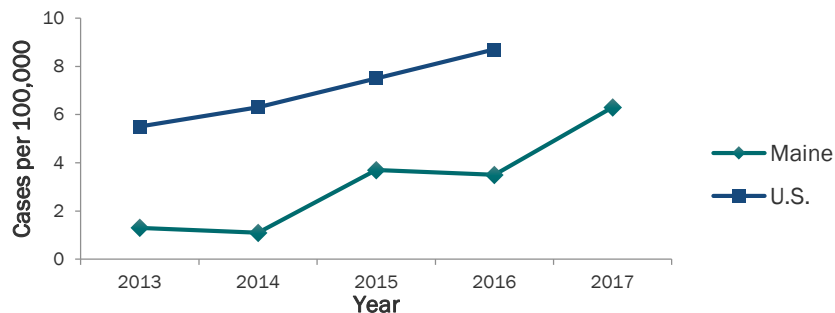
Maine had 83 cases of infectious syphilis

6.3

Cases per 100,000 people

77%

Increase since 2016



Demographics:



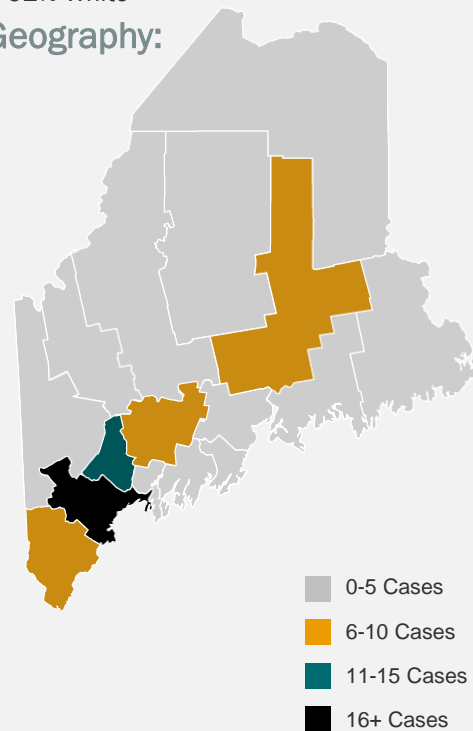
86% male

14% of cases were female, an increase of 8% since 2016

35 median age

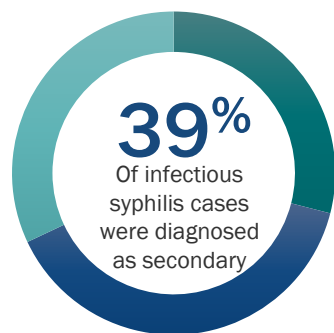
92% White

Geography:



Clinical Characteristics:

Syphilis 2017



- Primary
- Secondary
- Non-Primary/Non-Secondary

21

The average time between attaining syphilis and start of symptoms

29

Number of cases of late latent syphilis

Contact Investigations:



95

Partners/associates were named in contact investigations

4%

Were confirmed cases that were brought to treatment

68

Patients were interviewed

For more information visit:

<https://www.cdc.gov/std/syphilis/stdfact-syphilis-detailed.htm>

<https://www.maine.gov/dhhs/mecdc/infectious-disease/hiv-std/contacts/std.shtml>

<https://www.cdc.gov/stopsyphilis/toolkit/HealthCareProviders/DocPocket.pdf>

Demographics:

Age	# Cases	% Cases
>20	1	1
20-24	15	18
25-29	15	18
30-34	9	11
35-39	8	10
40-44	3	4
45-49	11	13
50+	21	25
Total	83	100

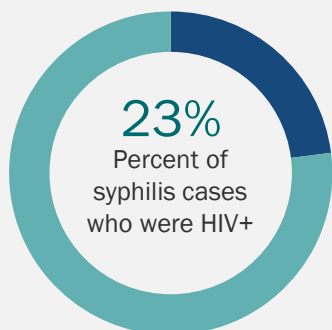
Prevention

- Correct and consistent use of latex condoms (prevents contact with sore).
- Being in a long-term mutually monogamous relationship with a partner who has been tested and is known to be uninfected.
- Sexual partners of infected patients should receive preventive treatment.

Treatment

Stage	Treatment
Primary, Secondary, Early Non-Primary/Non-Secondary	<p><u>Recommended Regimen</u></p> <ul style="list-style-type: none"> • Benzathine Penicillin G (Bicillin L-A) 2.4 million units IM once
	<p><u>Alternative Regimen (For penicillin-allergic, non-pregnant only)</u></p> <ul style="list-style-type: none"> • Doxycycline 100mg orally 2 times a day for 14 days or • Tetracycline 500mg orally 4 times a day for 14 days

Syphilis



For more information visit:

<https://www.cdc.gov/std/syphilis/stdfact-msm-syphilis.htm>

<https://www.cdc.gov/std/syphilis/stdfact-syphilis.htm>