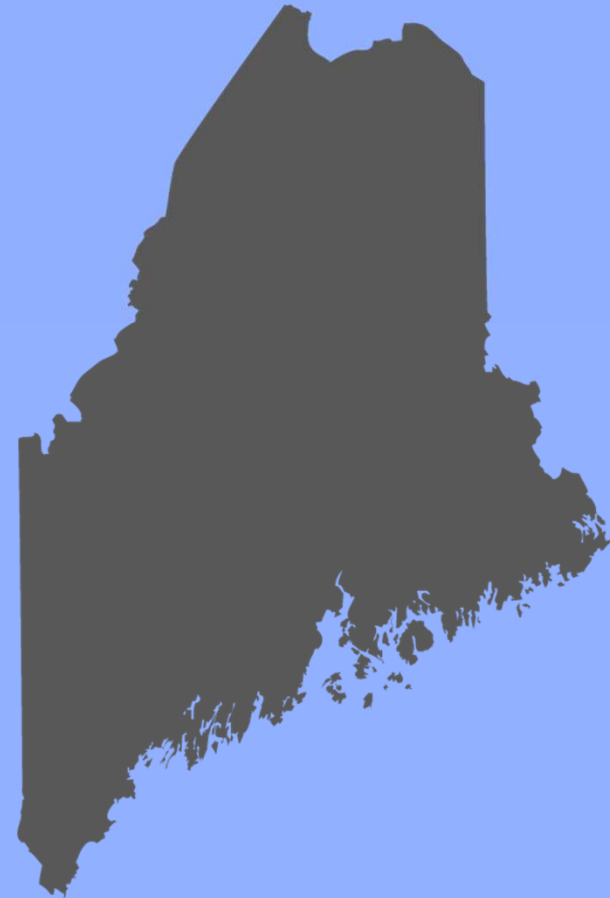




COVID-19: Public Health Considerations For Re-Opening Maine

May 14th, 2020



Proposed Maine Gating Criteria – Summary

REDUCTION OF COVID-19 SYMPTOMS

- Downward trajectory of influenza-like illnesses (ILI) reported within a 14-day period
- Downward trajectory of COVID-like syndromic cases reported within a 14-day period

DECREASE IN COVID-19 CASES

- Downward trajectory of documented cases within a 14-day period
- Downward trajectory of newly hospitalized patients within a 14-day period

HEALTH SYSTEM CAPACITY

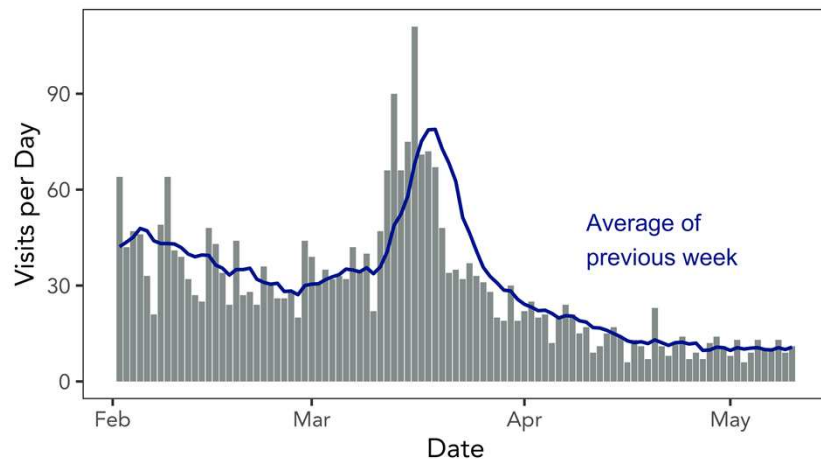
- Treat all patients without crisis care
- Robust testing program in place for at-risk health care workers, including emerging antibody testing

Maine Recommendations for Gating Criteria - Symptoms

Objective: Measure the burden of symptoms of COVID-19-like illness to capture patients who may have COVID-19, even if they were not tested.

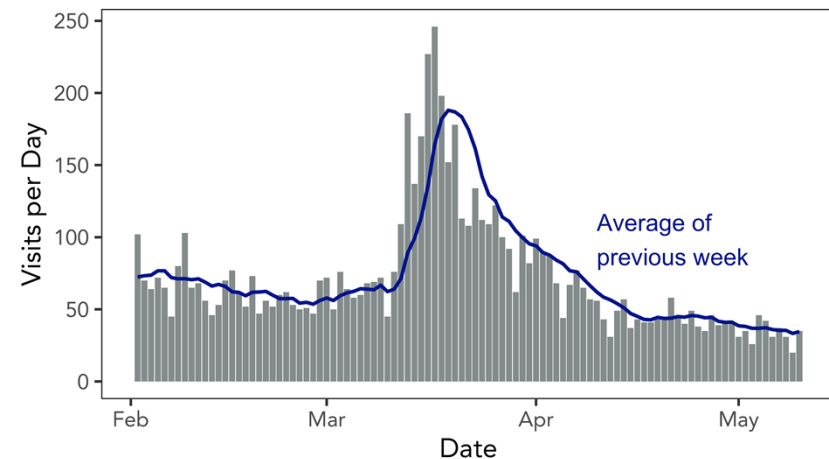
Number of visits with Influenza Like Illness (ILI)

Purpose: Strict, symptom-based definition, which may be more objective.



Number of visits that are potentially COVID-19

Purpose: Broad query, which may capture a larger number of visits.



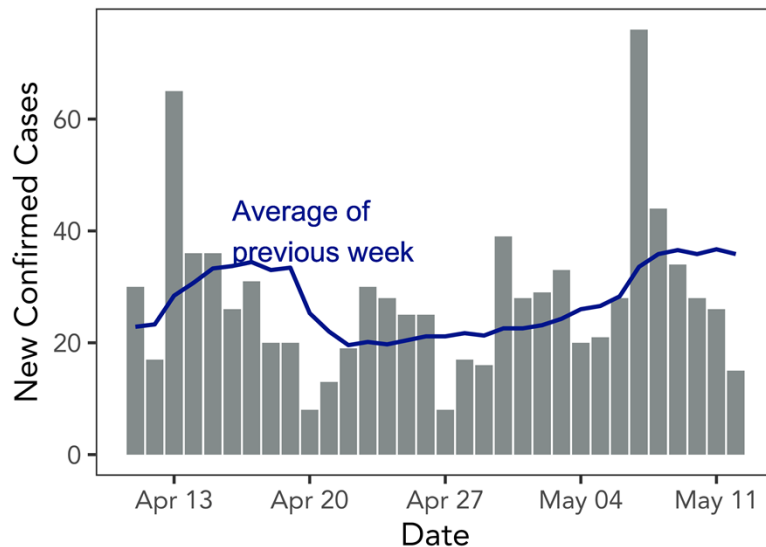
1 Definition: Fever AND (Cough OR Short of Breath) 2 Definition: Fever OR Cough OR Short of Breath OR Viral infection OR COVID/Coronavirus mentioned

Maine Recommendations for Gating Criteria - Cases

Objective: Measure the burden of confirmed COVID-19 cases—both in number and severity—focusing on severe disease that may result in high health care utilization

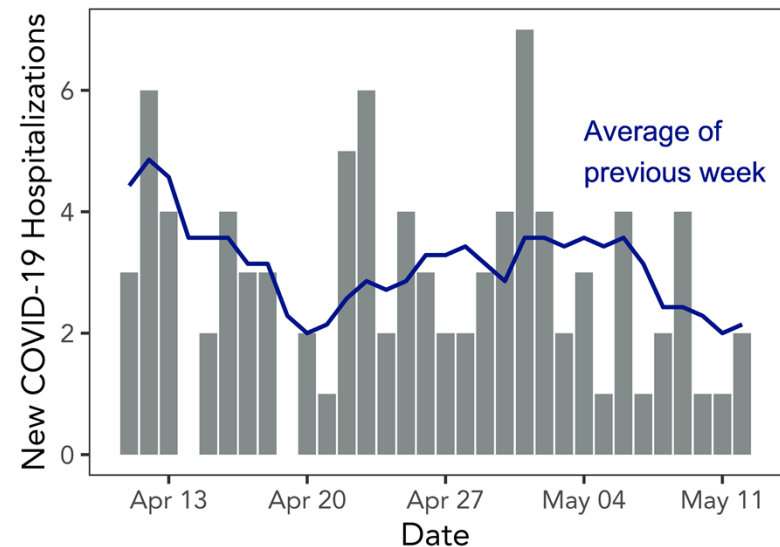
Number new COVID-19 cases

Purpose: Measure the incidence of new COVID-19 cases.



Number of patients newly hospitalized for COVID-19

Purpose: Measure the burden of severe COVID-19 disease.



Maine Recommendations for Gating Criteria - Hospitals

Objective: Ensure adequate health care resources are available to protect health care workers and patients in the event of a new outbreak.

Criterion: Treat all patients without crisis

Purpose: Ensure adequate hospital capacity if case numbers rise

| Resource | COVID-19 Occupied ¹ | Available ¹ |
|--------------|--------------------------------|------------------------|
| ICU Beds | 18 | 163 (+200) |
| Ventilators | 7 | 230 (+416) |
| Non-ICU Beds | 19 | ~1000 |

Criterion: Robust testing program in place for at-risk health care workers

Purpose: Ensure healthcare workers are tested to protect patients and health care workers

Health care workers are currently:

- In the top tier for COVID-19 testing and,
- Are able to receive tests promptly after exposure or symptom onset

¹ Available Number reported on Maine CDC survey of hospitals 5/14/2020 + approximate surge capacity

Additional Public Health Measures

EXPAND TESTING

- Widespread testing—especially in congregate settings—allows high-risk settings to prevent and manage outbreaks
- Expand testing capacity among public and private labs
- Determine role of antibody testing in allowing individuals to return to work or social activity

EXPAND CONTACT TRACING

- Contact tracing allows for contacts of confirmed cases to be identified and properly quarantined to limit spread
- Maine CDC will engage additional individuals to perform contact tracing and outbreak investigation

ENSURE HOSPITAL PREPAREDNESS

- Maine CDC has distributed pieces of PPE to health care facilities and will continue, with a focus on congregate settings
- Maintain ability to surge health care system capacity if cases rebound