

# Statewide Rational Service Areas Listening Session

*Prepared by*

Rural Health and Primary Care Program

JSI

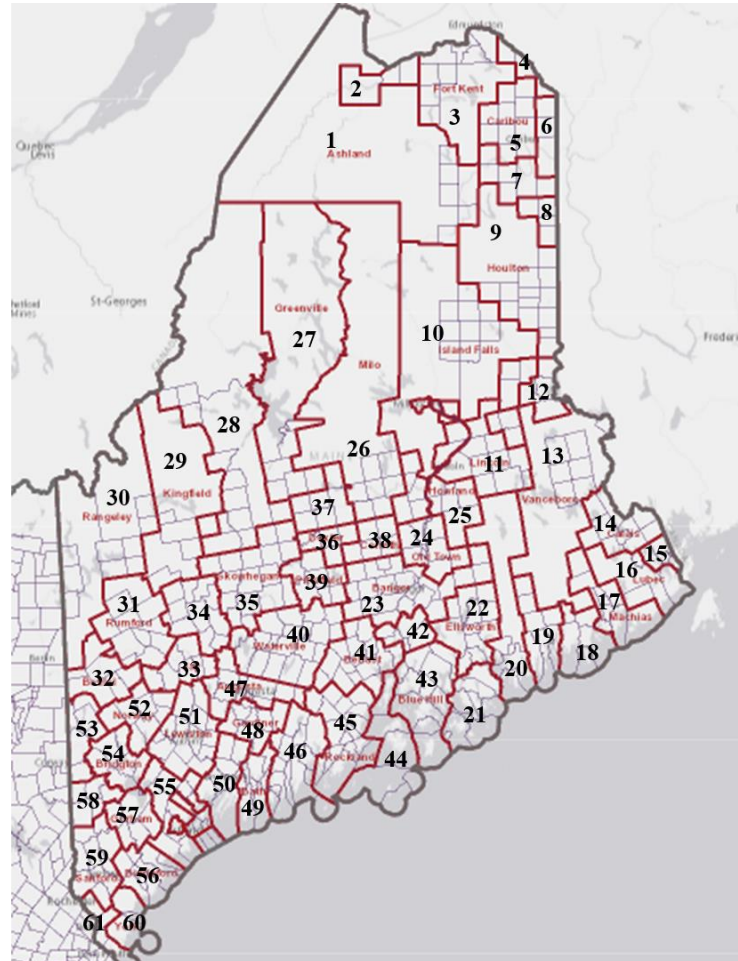


The Rural Health and Primary Care Program is a Program within the Division of Public Health Systems of the Maine Center for Disease Control and Prevention which is an Office of the Maine Department of Health and Human Services.

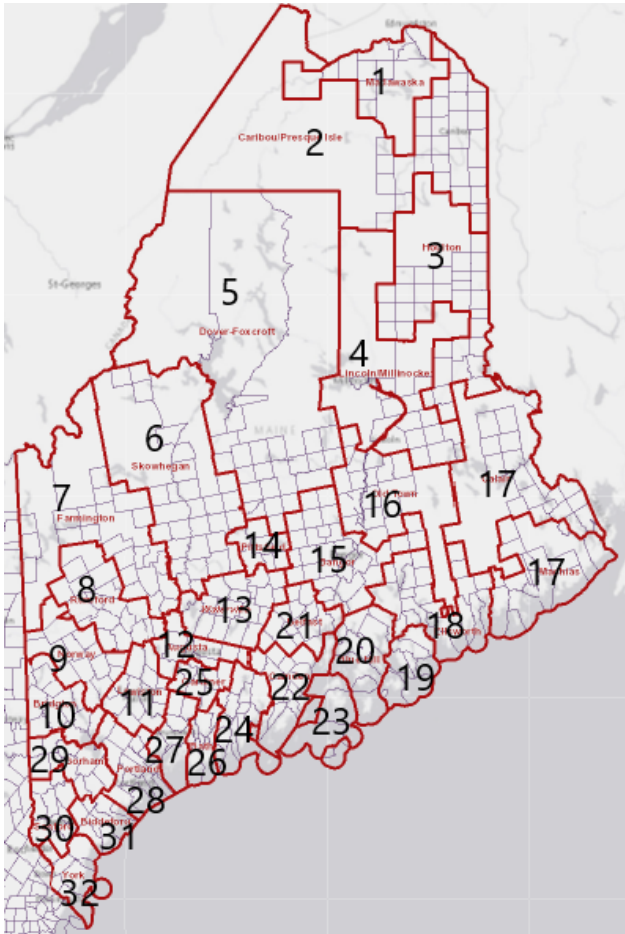
# Background

- Maine is one of a handful of states that currently has an approved SRSA plan
- Enacted decades ago

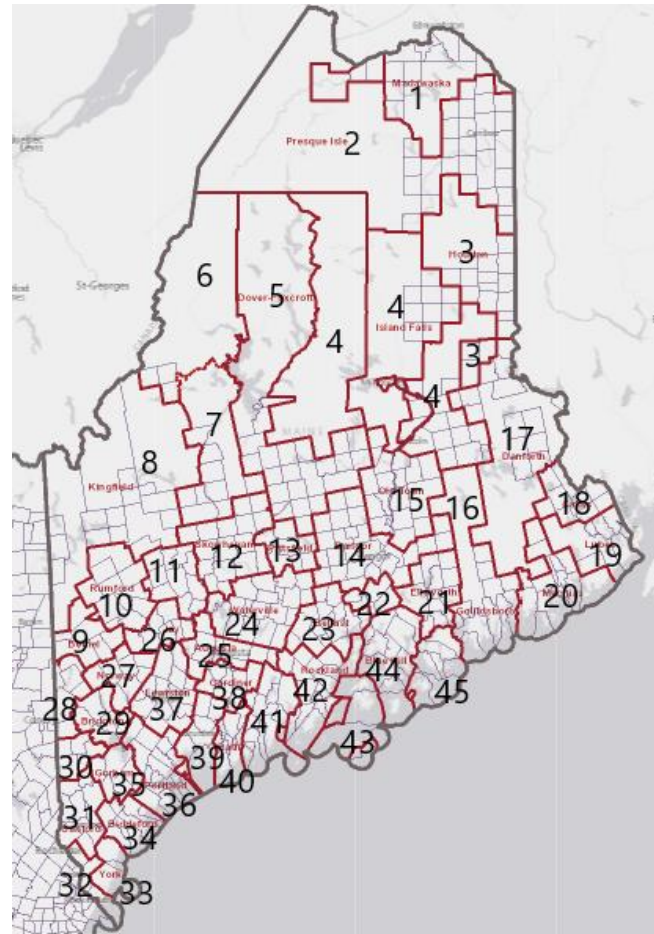
# Primary Care



# Mental Health



# Dental



# SRSA Updates

- Review required per Primary Care Office grant
- Provides the opportunity to analyze current capacity at the provider and community level to inform the validity of Maine's previously established Rational Service Areas

# SRSA JSI Team

- Eric Turer
- Diane Lewis
- Steve Schaffer

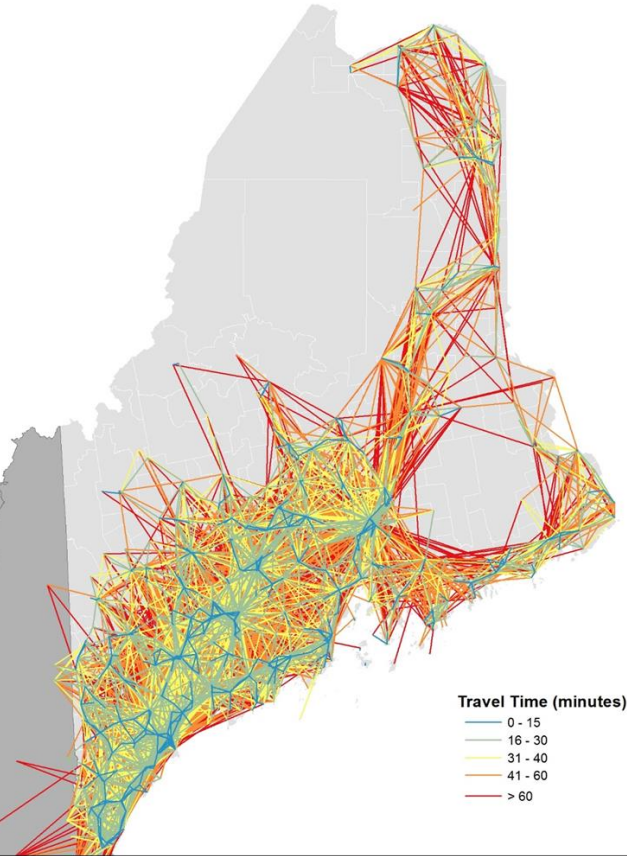
# Goals

- Identify pockets of unmet need. Rational Service Areas should not simply reflect the current patterns of patient access and existing ‘hubs’ of medical capacity
- Capture and reflect the different underlying barriers to access and capacity experienced by different sub-population groups within the state (income/insurance, language/culture, etc.)
- Sequentially assess population needs from Geographic to Population level and cover areas with no apparent need in Rational Service Areas last
- Rely on objective data driven methods to examine current patterns of access and quantify metrics of access difficulties
- Relate provider distribution and access to population-level indicators of underservice and lack of capacity.



# Origin-Destination (O-D) Access Analysis

Maine All Payer Origin-Destination  
All PC Visit Pairs by Travel Time



- Data Source: Maine All-Payer Claims Dataset
  - PC visits defined by CPT codes and Provider Taxonomy
- Origin-Destination for each PC visit
  - Origin: Patient Zip Code
  - Destination: Provider Service Location Zip Code
- Non-Physician primary care providers included
- Limits imposed to eliminate extraneous patterns
  - Destinations with <11 claims from origin zip excluded
  - 90 minute drive time limit
- O-D Patterns mapped (*Primary vs All*)
  - Preference percent by destination zip calculated
- Drive time between O-D zip pairs calculated
  - Mean Travel Time to care
    - Volume weighted by # of claims per pair
  - Fractional Travel Time exceeding threshold
    - Percent of population traveling > 30 Minutes, >40 Minutes, etc.
  - Visit Frequency
    - PC Visits per 'member-year'

# Primary Destination Patterns

- Shows dominant pattern for PC visits



Kernel = Dominant destination is same zip

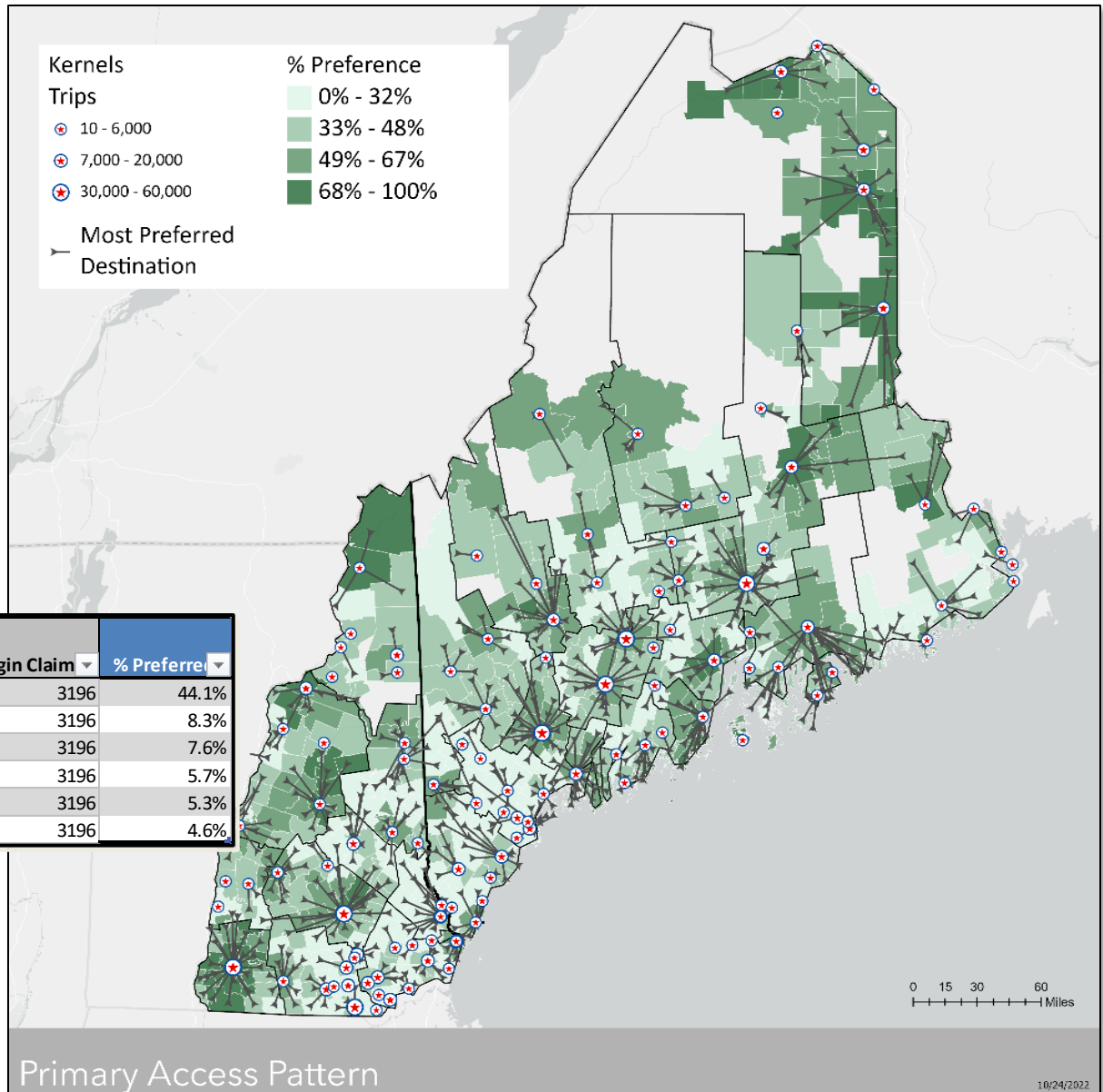


Destination = Dominant destination is other zip



Percent Preference = Portion of visits that follow primary pattern

- May not represent majority of care



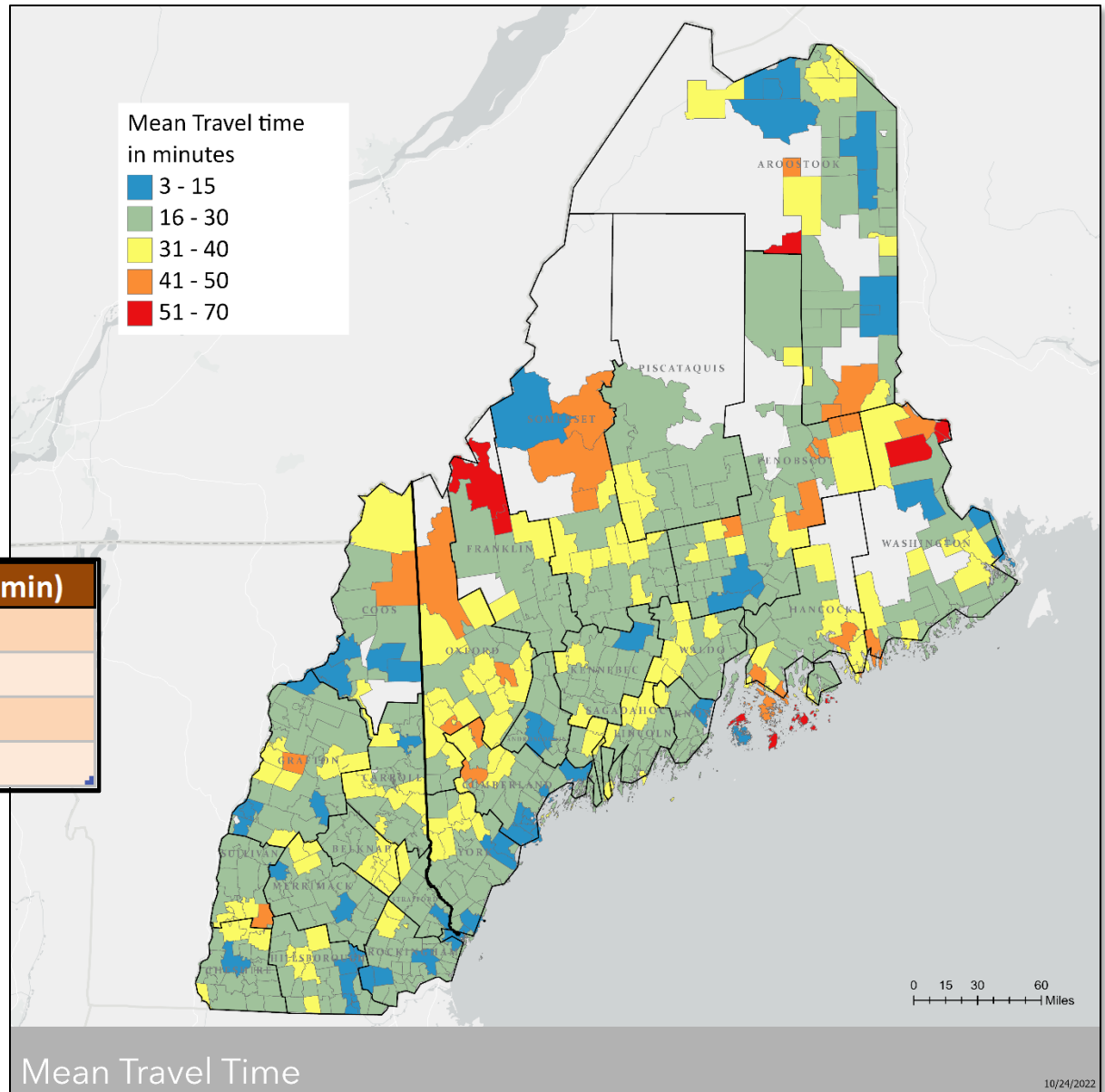
Origin_Zip	Destination_Zi	Claims	Total Origin Claim	% Preference
01001	01107	1410	3196	44.1%
01001	01001	265	3196	8.3%
01001	01089	243	3196	7.6%
01001	01085	182	3196	5.7%
01001	01103	168	3196	5.3%
01001	01109	147	3196	4.6%

Primary Access Pattern

# Mean Travel Time to PC Visit

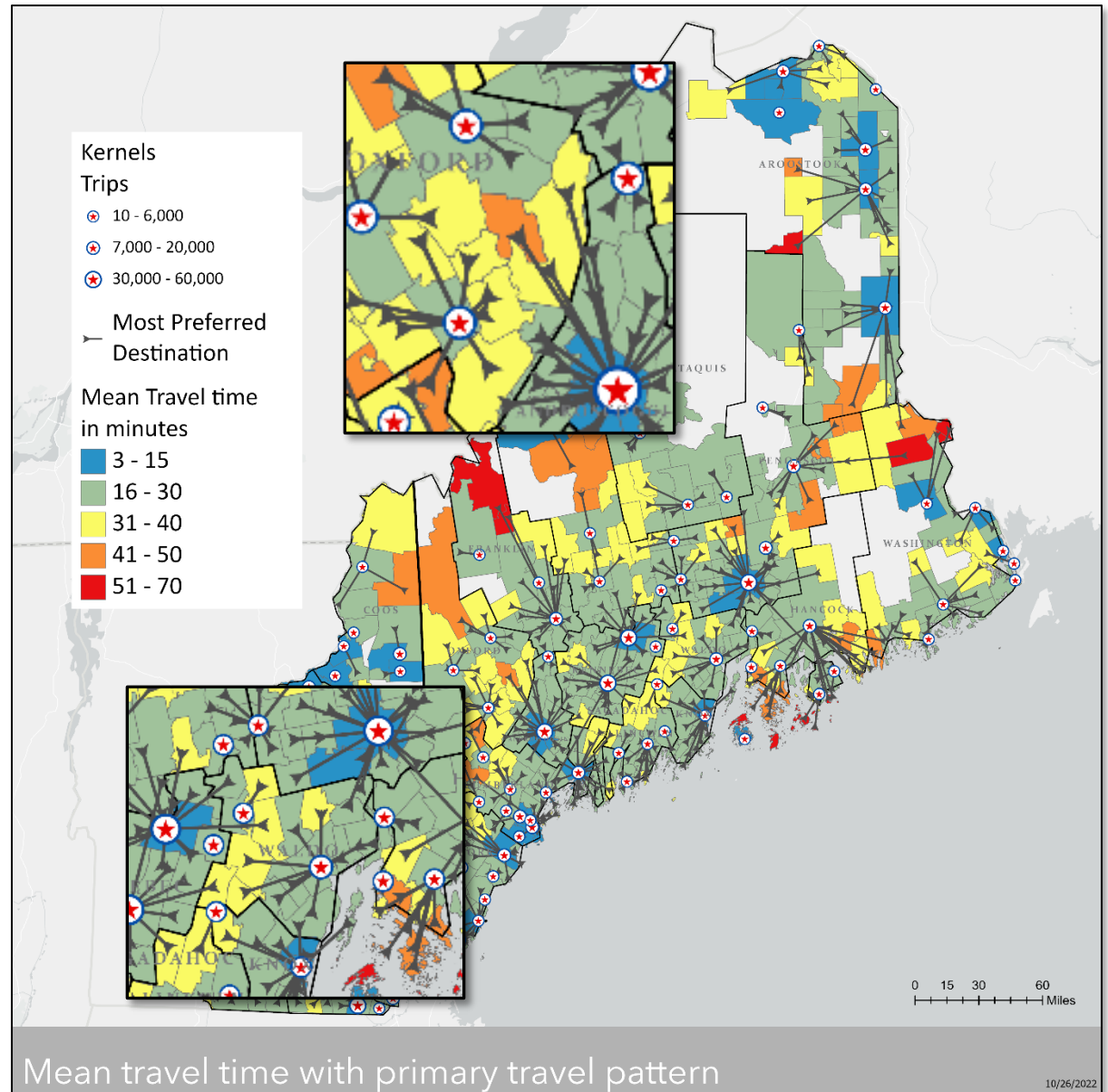
- Uses all visits from each zip (not just primary)
  - After exclusions for small counts and excessive time
- Applies O-D drive time between zips to visit count
  - Drive time based on actual road network, speed limits, etc.

O/D Zip Codes	Drivetime (min)
03031-03031	0
03031-03101	19.5
03031-03053	29.7
03031-01854	40.1

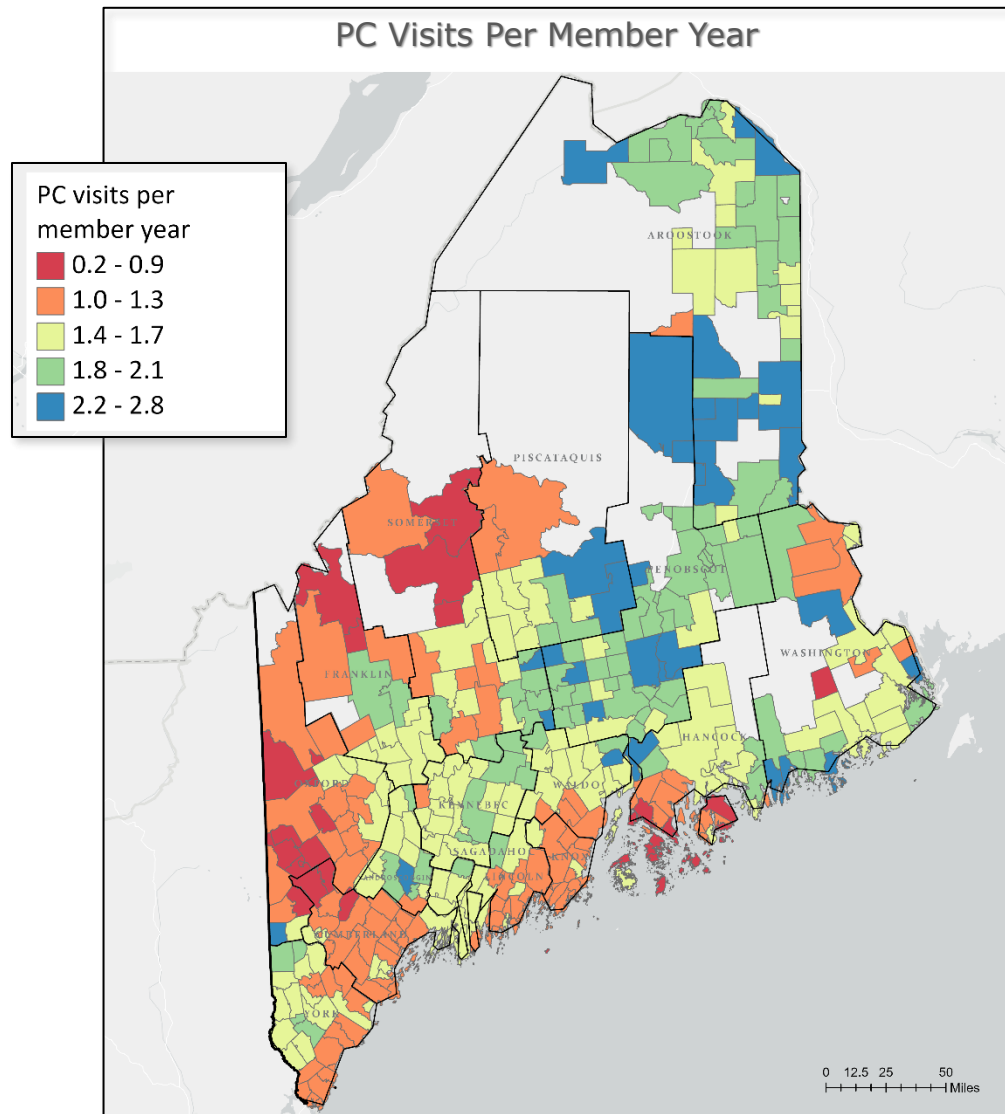


# Comparison of Travel Time and Primary Pattern

- Mean travel time shortest around 'kernel' communities
- Areas with greatest travel time also often lack strong preference
  - Pulled apart towards different destinations



# Claims-based Utilization per Member Year



# Other Elements Considered

- Medicaid vs Private access patterns
- Underlying community demographics (poverty, age distribution)
- Roads, bridges/ferries, topography
- Location of existing resources serving the areas
- School Districts and other existing community relationships
- Medical access pattern factored into other designation disciplines

# RHPCP SRSA Contacts

Nicole Breton  
Director

(207) 287-5503  
nicole.breton@maine.gov

Merica Tripp  
Planning & Research Associate

(207) 287-5504  
merica.a.tripp@maine.gov