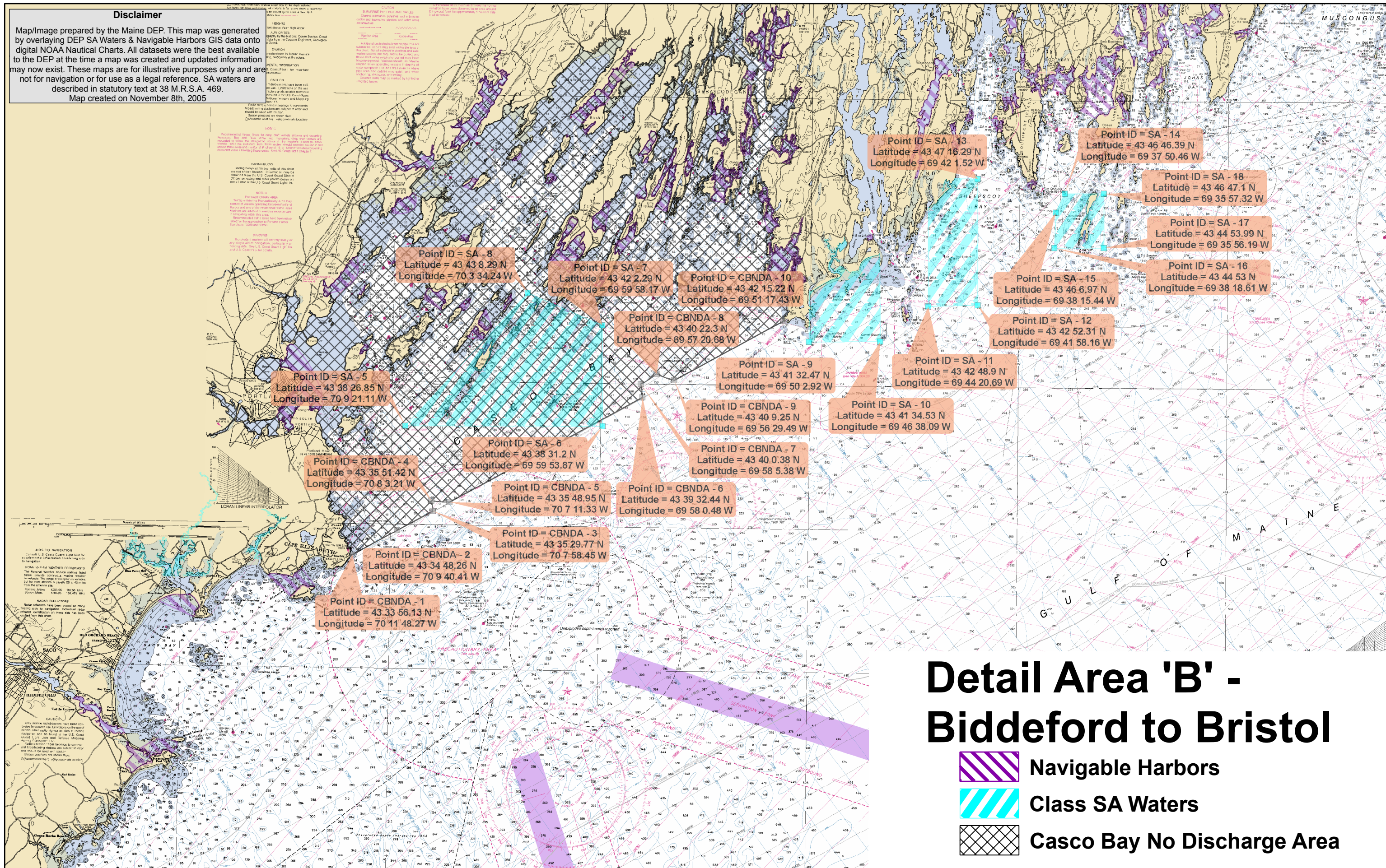





Disclaimer

Map/Image prepared by the Maine DEP. This map was generated by overlaying DEP SA Waters & Navigable Harbors GIS data onto digital NOAA Nautical Charts. All datasets were the best available to the DEP at the time a map was created and updated information may now exist. These maps are for illustrative purposes only and are not for navigation or for use as a legal reference. SA waters are described in statutory text at 38 M.R.S.A. 469. Map created on November 8th, 2005



Detail Area 'B' - Biddeford to Bristol

-  Navigable Harbors
-  Class SA Waters
-  Casco Bay No Discharge Area