



Surface Use Restriction
**Cobbosseecontee Lake between Pond Road and the Cobbosseecontee Lake Dam,
Manchester, Maine**

Pursuant to 38 MRSA §1864, the Maine Departments of Environmental Protection (DEP) and Inland Fisheries and Wildlife (DIFW) hereby establish a temporary surface use restriction on an approximately 5.5-acre area of Cobbosseecontee Lake between Pond Road and the Dam. The invasive aquatic plant Eurasian water-milfoil (*Myriophyllum spicatum*) was confirmed growing in this area on July 26, 2023.

The purposes of this surface use restriction are to 1. reduce fragmentation of the invasive aquatic plant before remediation occurs and 2. limit further spread of this plant in Cobbosseecontee Lake and to downstream areas. The plant has already been documented downstream but continued fragmentation in this 5.5-acre area will result in more fragments moving downstream.

By this Order, the restriction on watercraft during 2023 is as follows:

From August 8, 2023 through December 31, 2023, no watercraft may enter or travel this reach of Cobbosseecontee Lake.

Exceptions to this Order are limited to boat travel 1) in emergency situations where property or human safety is endangered and 2) specifically allowed by the DEP to survey for and remove invasive plants, apply herbicide under an active Notice of Intent, deploy fragment nets and buoys, and maintain fragment nets.

The restriction extends from where Pond Road crosses Cobbosseecontee Lake in Manchester to the Cobbosseecontee Lake Dam. A buoy deployed and maintained by DEP with assistance from Department of Agriculture, Conservation and Forestry's Boating Facilities Division will be on the west side of the Pond Road bridge to alert boaters to the restriction.

This surface use restriction is in effect unless canceled in writing by the Departments.

ORDERED BY:

Melanie Loyzim, Commissioner
Department of Environmental Protection

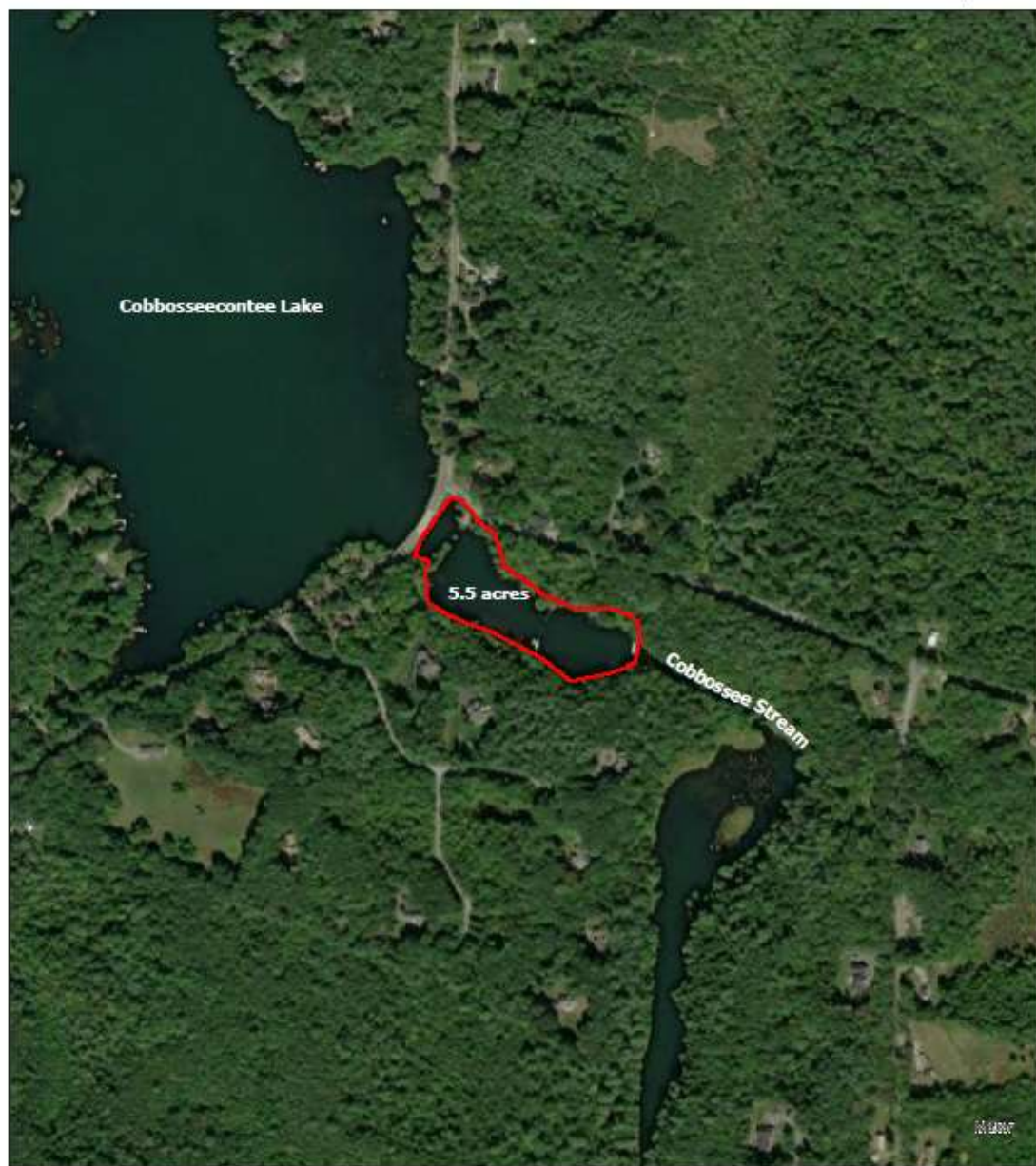
Judith Camuso, Commissioner
Department of Inland Fisheries & Wildlife


8/14/2023
Date

8/8/2023
Date



Cobbosseecontee Lake, Manchester, ME 2023 Surface Use Restriction



Restricted Area 

0 0.25 0.5 Miles

