



Surface Use Restriction

Cobbosseecontee Lake between Pond Road and the Cobbosseecontee Lake Dam, Manchester, Maine

Pursuant to 38 MRSA §1864, the Maine Departments of Environmental Protection (DEP) and Inland Fisheries and Wildlife (DIFW) hereby establish a temporary surface use restriction on an approximately 5.5-acre area of Cobbosseecontee Lake between Pond Road and the Dam. The invasive aquatic plant Eurasian water-milfoil (*Myriophyllum spicatum*, EWM) was confirmed growing in this area on July 26, 2023. The DEP hired a contractor in August 2023 to apply herbicide to manage EWM in this area and in a portion of the adjacent upstream cove.

The purposes of this surface use restriction are to 1. reduce fragmentation of the invasive aquatic plant if there is regrowth in 2025; and 2. limit further establishment of EWM in Cobbosseecontee Lake and in downstream areas. The plant has already been documented downstream but continued fragmentation in this 5.5-acre area will result in more fragments moving downstream.

By this Order, the restriction on watercraft during 2025 is as follows:

From April 1, 2025 through December 31, 2025, no watercraft may enter or travel this reach of Cobbosseecontee Lake.

Exceptions to this Order are limited to boat travel 1) in emergency situations where property or human safety is endangered and 2) specifically allowed by the DEP to survey for and remove invasive plants, apply herbicide under an active Notice of Intent, deploy fragment nets and buoys, and maintain fragment nets.

The restriction extends from where Pond Road crosses Cobbosseecontee Lake in Manchester to the Cobbosseecontee Lake Dam. A buoy deployed and maintained by DEP with assistance from the Maine Department of Agriculture, Conservation and Forestry's Boating Facilities Division is just west of the Pond Road bridge to alert boaters to the restriction.

This surface use restriction is in effect unless canceled in writing by the Departments.

ORDERED BY:

Melanie Loyzim, Acting Commissioner
Department of Environmental Protection

Judith Camuso, Commissioner
Department of Inland Fisheries & Wildlife

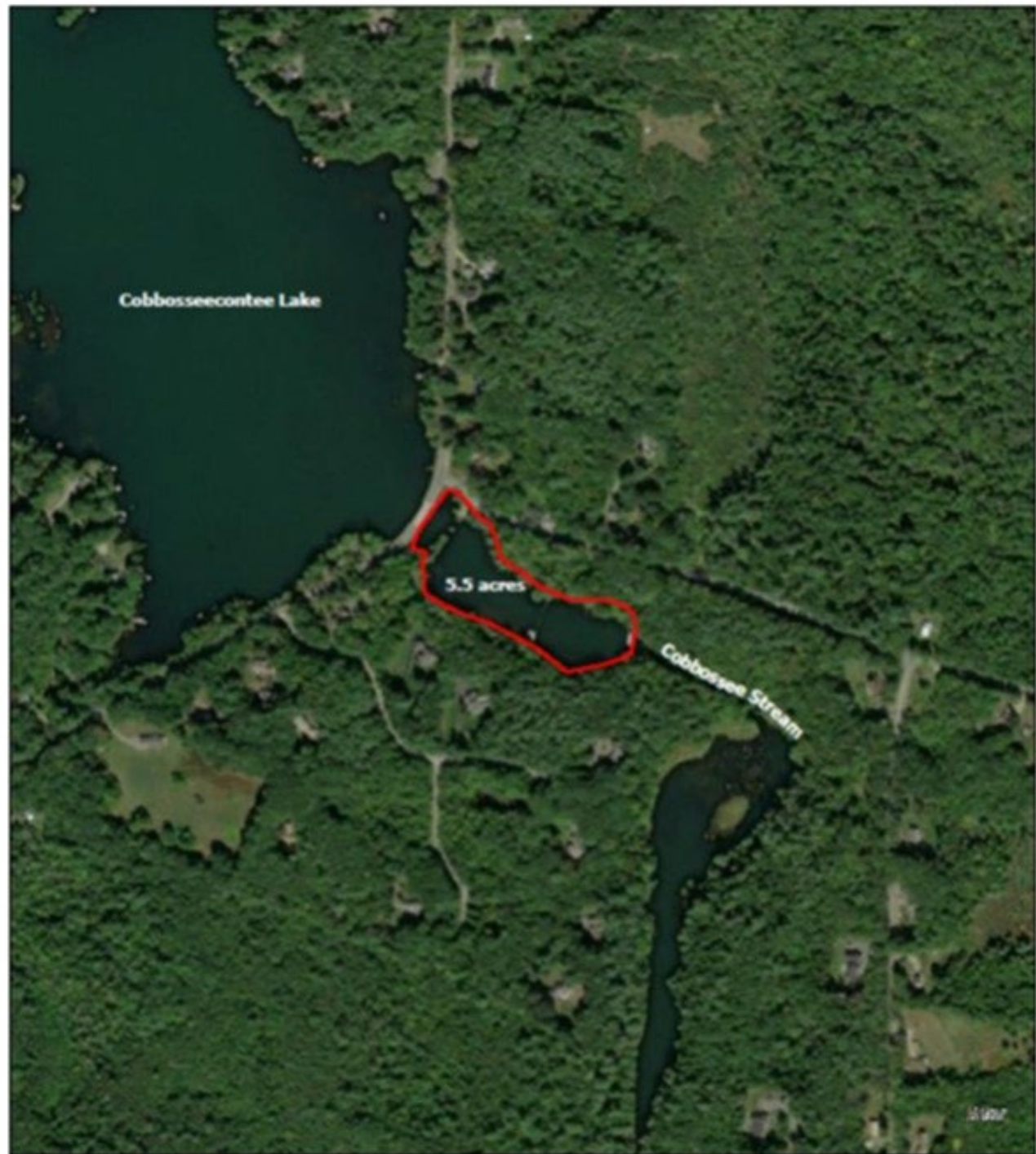
3/24/2025
Date

3/24/2025
Date



Cobbosseecontee Lake, Manchester ME

2025 Surface Use Restriction



Restricted Area 

0 0.25 0.5 Miles

