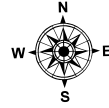
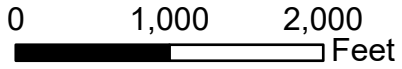


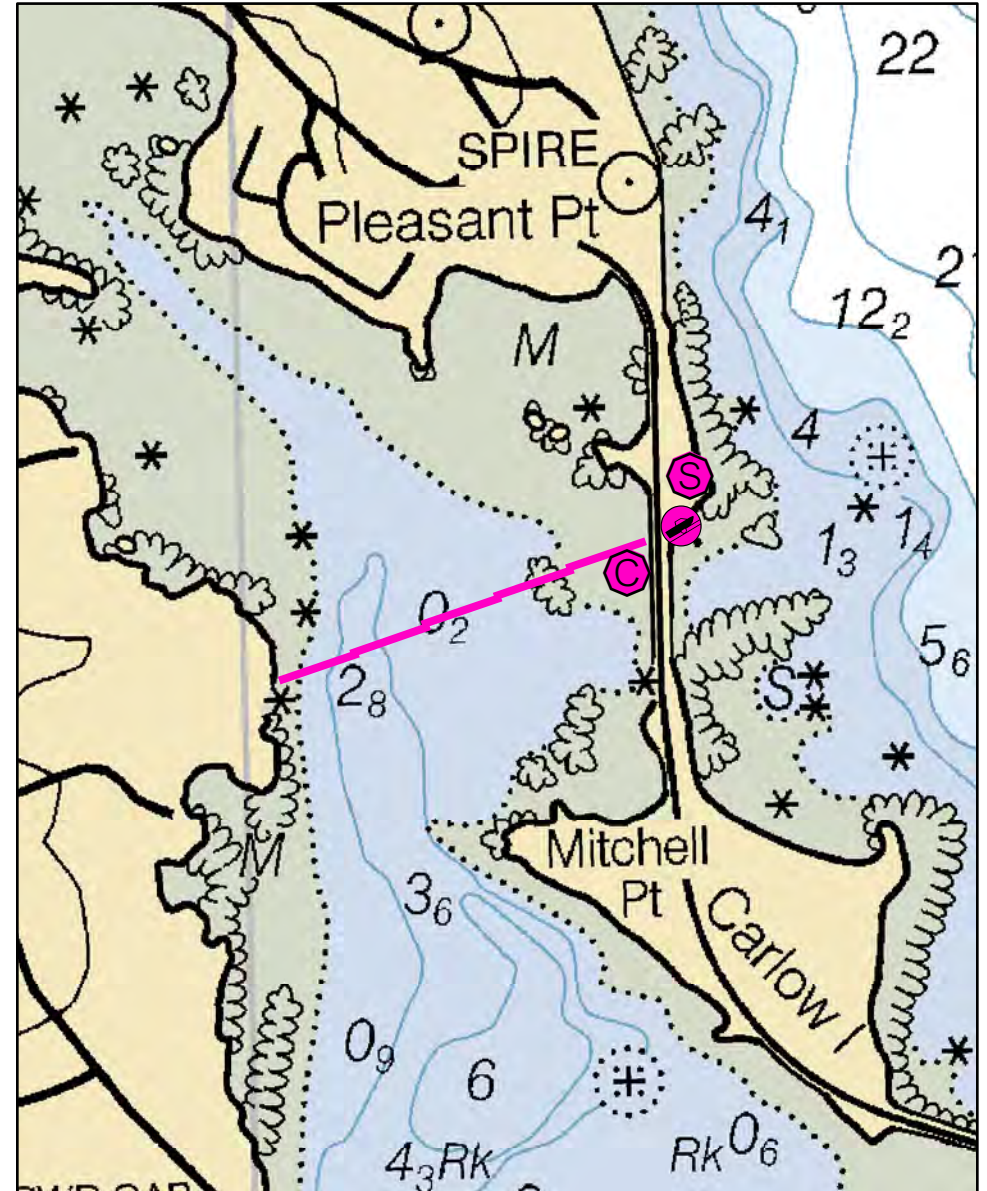
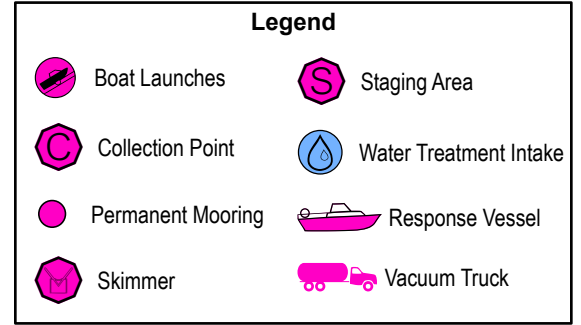
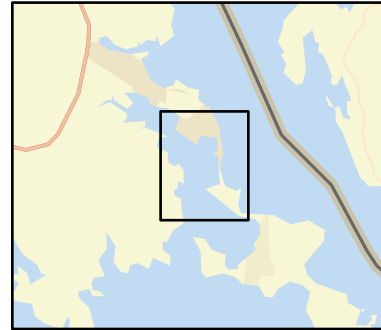
# D-22-1

## Pleasant Point

### Perry / Pleasant Point, ME



Date printed: 9/10/2022 7:54 PM



# D-22-1 Pleasant Point

**Town** Perry / Pleasant Point

**Port Region** Downeast

**Latitude** 44° 56.92' N **Longitude** 67° 2.651' W

**NOAA Chart #** 13394\_1

**Approx. Tidal Range (feet)** 19

**ESI Map #** 3B

**Max Current (knots)** Flood Ebb

**EVI Map #** 95

**Source** DeLorme Map # (2019) 37 E3

## Resources At Risk

**ESI Primary Shoreline Type** Mixed sand and gravel beaches (5)

**ESI Secondary Shoreline Type** Riprap (6B)

**Environmental Concerns** Mudflats, elver runs, shellfish beds, eelgrass, eagle nest

**Archaeological Conflicts** No conflict as designed. Deviations from GRS design will require MHPC review. Contact MHPC at (207) 287-2132.

## Strategy Information

**Strategy Purpose** Divert oil from intertidal area and Pleasant Point Reservation area

**Staging Areas** Passamaquoddy Bay boat ramp owned by Passamaquoddy Tribe

**Site Access** By water from launch around Eastport or from Johnson Bay boat launch, Lubec

**Nearest Boat Ramp** Passamaquoddy Bay boat ramp or Johnson Bay boat ramp, Lubec

**Collection Points** From Route 1 causeway. Will need police assistance for road.

**Special Instructions** Contact Passamaquoddy Tribe at Pleasant Point: 207-853-2600 or police non-emergency line: 207-853-6100

**Work Assignment** Deploy five 500 foot sections of boom from causeway across channel

## Recommended Equipment / Resources

**Length of Boom (feet)** 2500

**Type of Boom** 12" to 18" containment boom

**Recommended Equipment (Minimum)**  
8 - anchor systems: 35 lb. Danforth or equivalent and line for 3:1 scope plus tag lines and buoys.  
2 - shoreside connections  
1 - vacuum truck or skimmer and storage  
2 - 3 workboats with minimum 90 hp  
2 - 3 boat operators  
4 - 6 laborers

Unless otherwise indicated, the boom length given is the distance measured on the chart. Actual length required may vary with conditions.

Last Desktop Validation: 5/4/2019

Last Field Visit

Last Field Test: