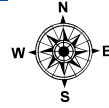
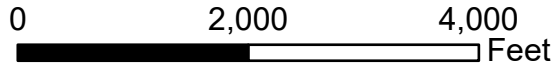


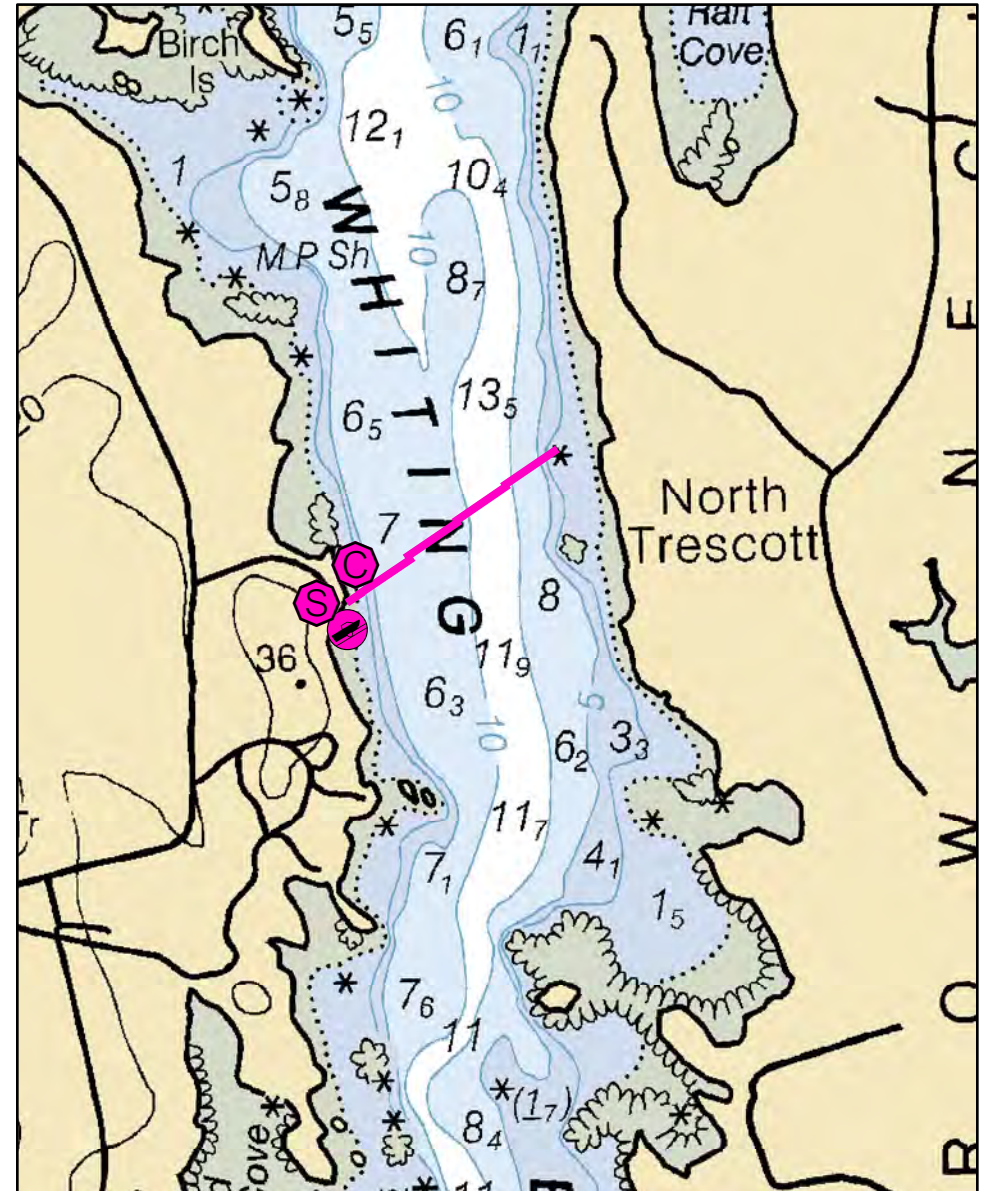
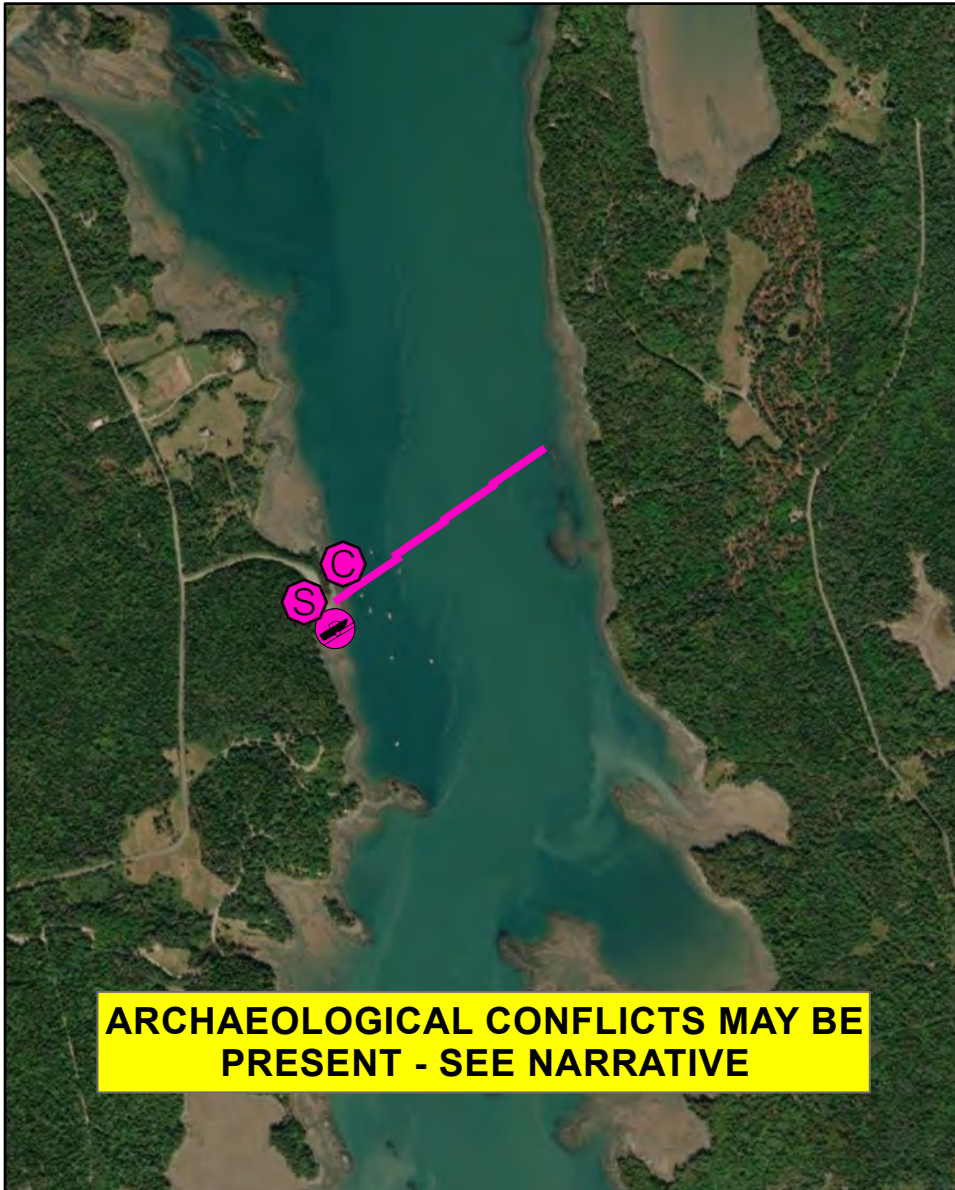
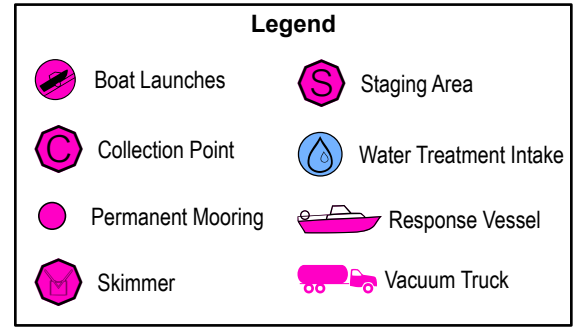
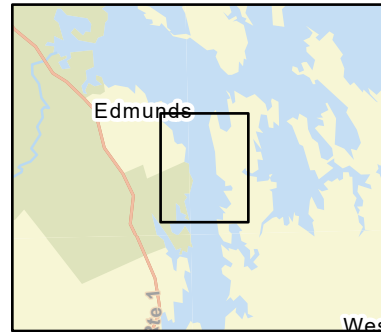
D-18-1

Whiting Bay

Edmunds Township / Trescott Township, ME



Date printed: 9/10/2022 7:54 PM



D-18-1 Whiting Bay

Town Edmunds Twp / Trescott Twp

Latitude 44° 50.808' N **Longitude** 67° 8.652' W

Approx. Tidal Range (feet) 18

Max Current (knots) **Flood** **Ebb**

Source estimated

Port Region Downeast

NOAA Chart # 13394_1

ESI Map # 4B, 5A

EVI Map # 95, 94

DeLorme Map # (2019) 27 A2

Resources At Risk

ESI Primary Shoreline Type Mixed sand and gravel beaches (5)

ESI Secondary Shoreline Type

Environmental Concerns Eagle nests, shellfish, seal haul outs, eelgrass, shorebird and marine worm habitat in Whiting Bay

Archaeological Conflicts Maintain activities on developed portions of boat ramp as much as possible. Deviations from GRS design will require MHPC review. Contact MHPC at (207) 287-2132.

Strategy Information

Strategy Purpose To divert oil from upper Whiting Bay

Staging Areas Cobscook Bay boat ramp, Cobscook Bay State Park

Site Access Cobscook Bay boat ramp, Cobscook Bay State Park

Nearest Boat Ramp Cobscook Bay boat ramp, Cobscook Bay State Park

Collection Points Cobscook Bay boat ramp, Cobscook Bay State Park

Special Instructions

Work Assignment Deploy five 500 foot sections and one 100 foot section of boom across Whiting Bay from Cobscook Bay boat ramp

Recommended Equipment / Resources

Length of Boom (feet) 4000 **Type of Boom** Harbor

Recommended Equipment (Minimum)
10 - anchor systems: 35 lb. Danforth or equivalent and line for 3:1 scope plus tag lines and buoys.
2 - shoreside connections
1 - vacuum truck or skimmer and storage
2 - workboats with minimum 90 hp
2 - boat operators
4 - 6 laborers

Unless otherwise indicated, the boom length given is the distance measured on the chart. Actual length required may vary with conditions.

Last Desktop Validation: 5/4/2019

Last Field Visit: 6/19/2007

Last Field Test: