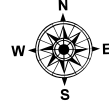
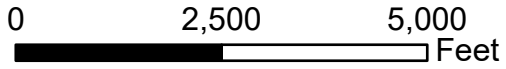


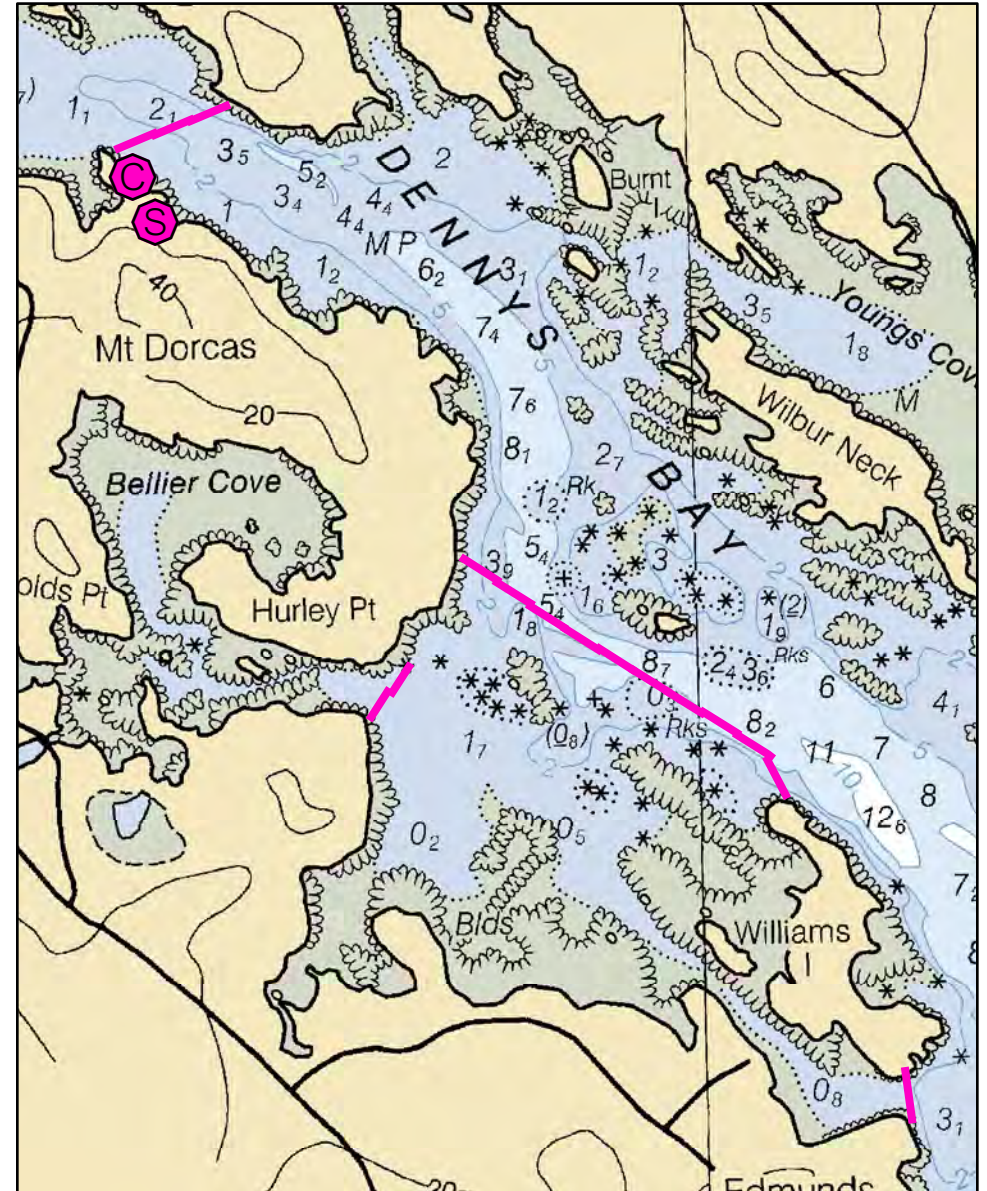
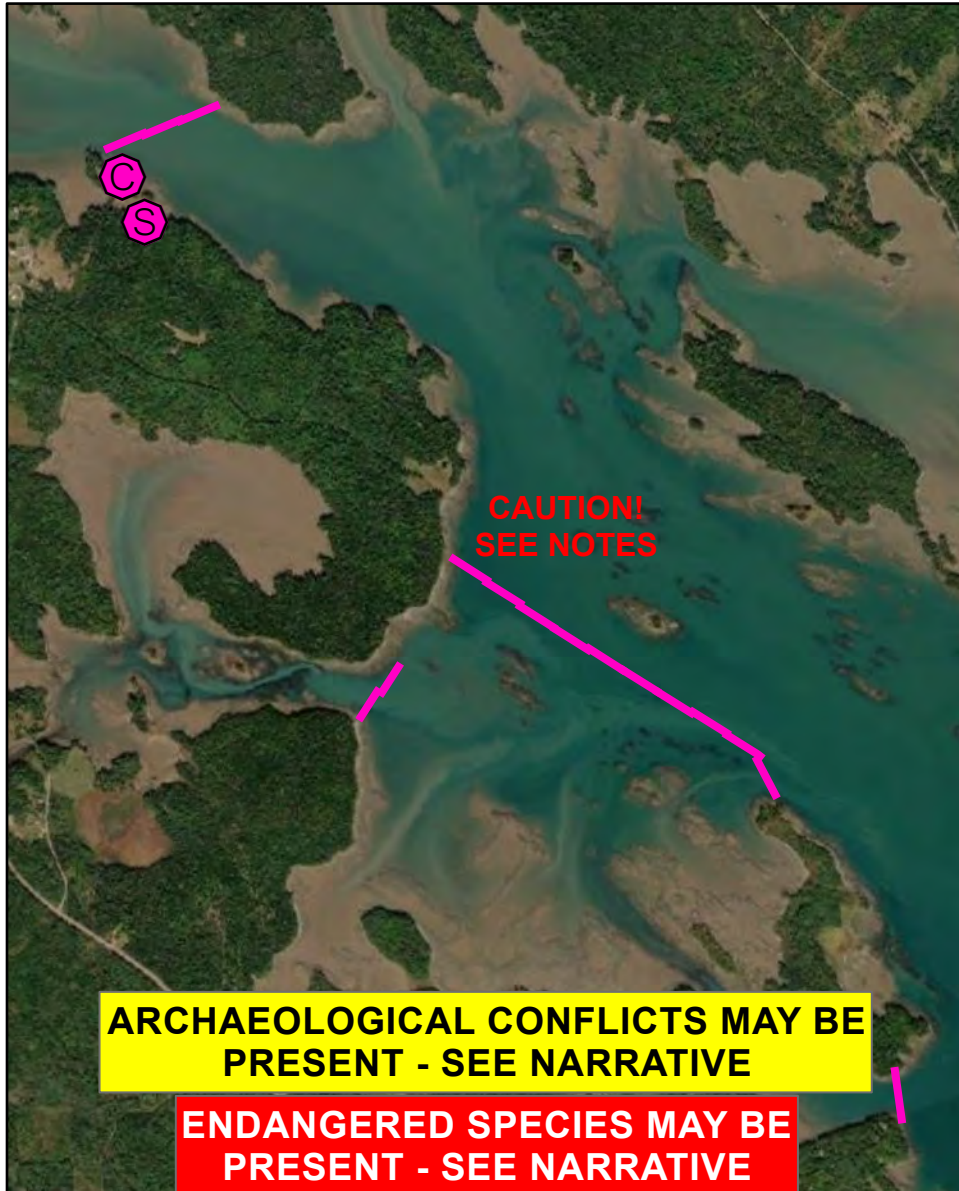
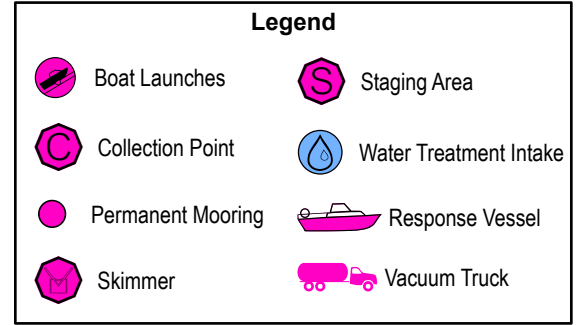
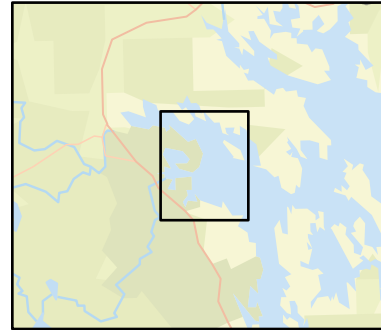
# D-17-1

## Dennys Bay

### Edmunds Township, ME



Date printed: 9/10/2022 7:54 PM



# D-17-1 Dennys Bay

**Town** Edmunds Twp

**Port Region** Downeast

**Latitude** 44° 53.707' N **Longitude** 67° 10.109' W

**NOAA Chart #** 13394\_1

**Approx. Tidal Range (feet)** 12

**ESI Map #** 5A, 4B

**Max Current (knots)** **Flood** **Ebb**

**EVI Map #** 94

**Source** **DeLorme Map # (2019)** 27 A1, A2

## Resources At Risk

**ESI Primary Shoreline Type** Exposed wave-cut platforms in bedrock, mud, or clay (2A)

**ESI Secondary Shoreline Type** Mixed sand and gravel beaches (5)

**Environmental Concerns** Federally endangered Atlantic Salmon may be present April - November. Strategy protects areas of Moosehorn National Wildlife Refuge. Extensive mudflats, marshes, shorebird areas, eelgrass, shellfish beds, elver runs and other diadromous fish. Contact Andrew Major at US Fish & Wildlife Service (603) 227-6413 and Moosehorn National Wildlife Refuge: (207) 454-7161.

**Archaeological Conflicts** Utilize boulder or tree anchors for two center boom spreads at connections with Hurley Point. Deviations from GRS design will require MHPC review. Contact MHPC at (207) 287-2132.

## Strategy Information

**Strategy Purpose** To exclude / divert oil from Bellier Cove and other areas of Moosehorn NWR.

**Staging Areas** Cobscook Bay boat ramp, Cobscook Bay State Park. May be able to pull boom from private property at point of land as shown near Mt. Dorcas at intersection of Belyea Rd. and Black Duck Rd. in Edmunds Twp. Scout area first.

**Site Access** Same as staging area

**Nearest Boat Ramp** Cobscook Bay boat ramp, Cobscook Bay State Park, South Edmunds Road, Edmunds Twp.

**Collection Points** May be able to collect from private property at point of land as shown near Mr. Dorcas at intersection of Belyea Rd. and Black Duck Road in Edmunds Twp.

**Special Instructions** CAUTION: Cobscook Bay has strong currents and confused seas. Many rocky areas that may not be accurately charted. Local knowledge is strongly advised.

**Work Assignment** See special instructions. Primary strategy is to deploy ten 500 foot sections across entrance to Moosehorn NWR as shown. If resources do not allow this, place two 400 foot sections across entrance to Bellier Cove at high water. Deploy three 500 foot sections across the entrance to Dennys River

## Recommended Equipment / Resources

**Length of Boom (feet)** 900 - 5900

**Type of Boom** 12" to 18" containment boom

**Recommended Equipment (Minimum)**  
6 - 24 anchor systems: 35 lb. Danforth or equivalent and line for 3:1 scope plus tag lines and buoys.  
6 - shoreside connections  
1 - vacuum truck or skimmer and storage  
2 - 4 workboats with minimum 90 hp  
2 - 4 boat operators  
6 - 10 laborers

Unless otherwise indicated, the boom length given is the distance measured on the chart. Actual length required may vary with conditions.

Last Desktop Validation: 5/4/2019

Last Field Visit: 6/19/2007

Last Field Test: