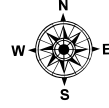
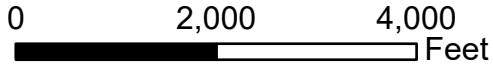


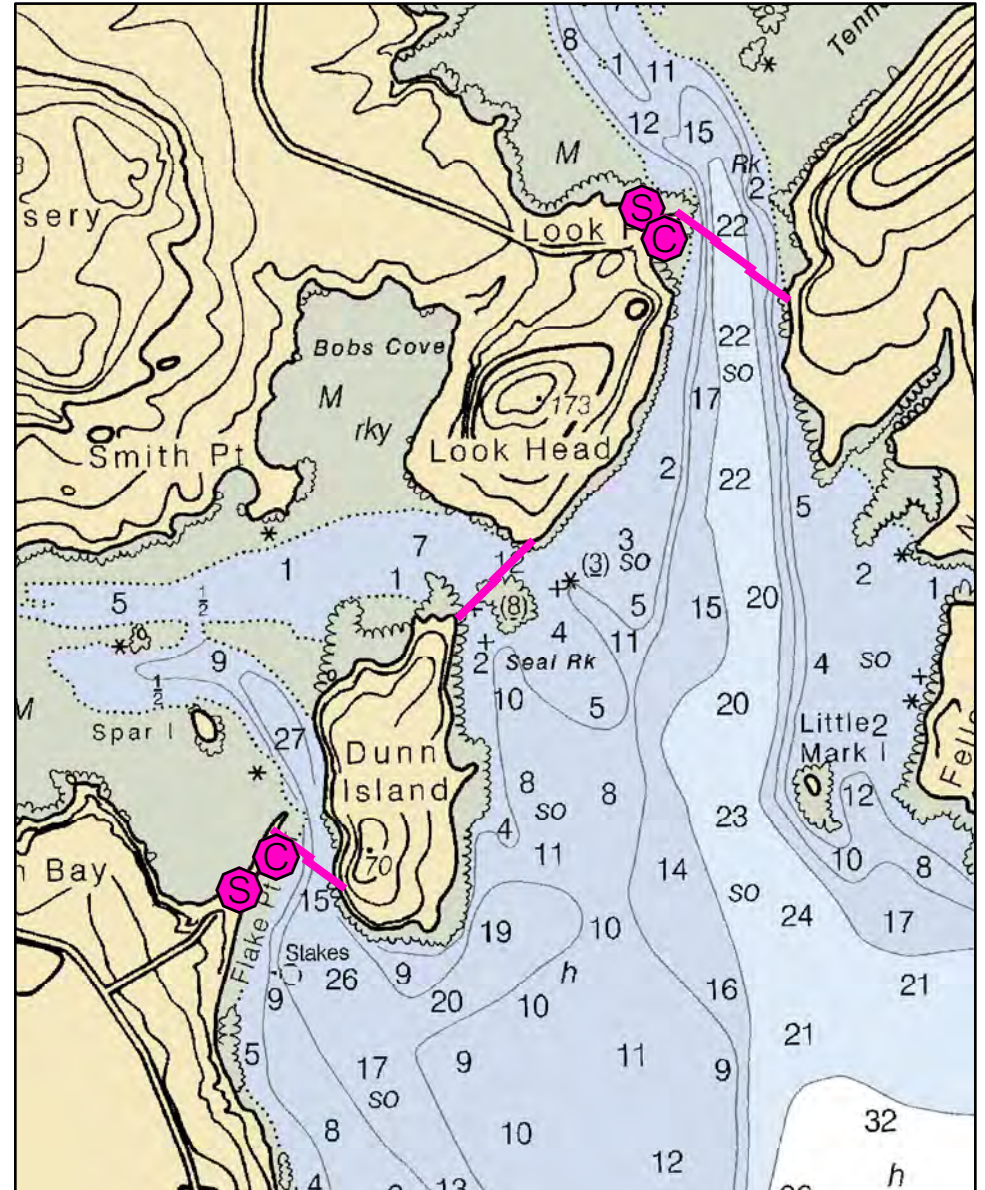
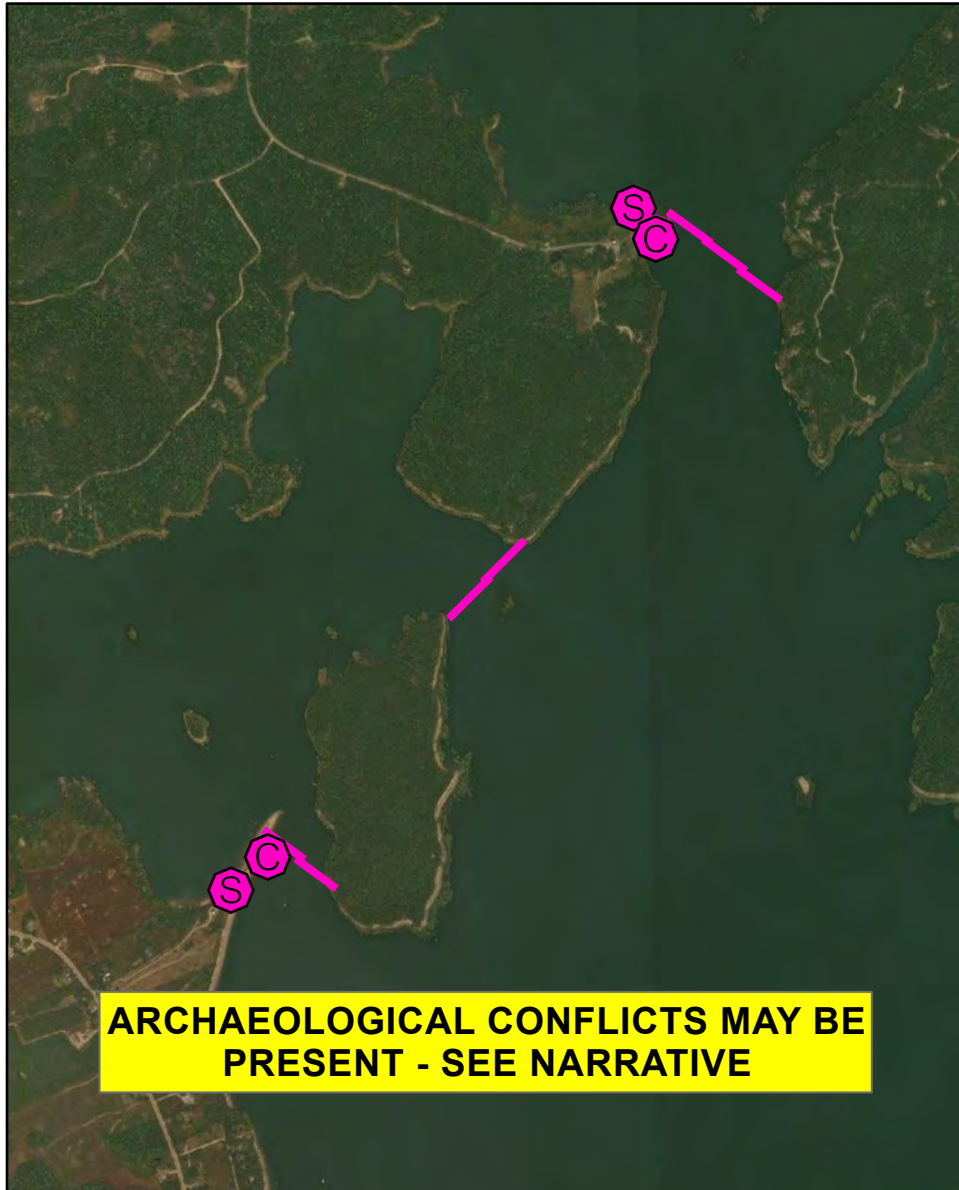
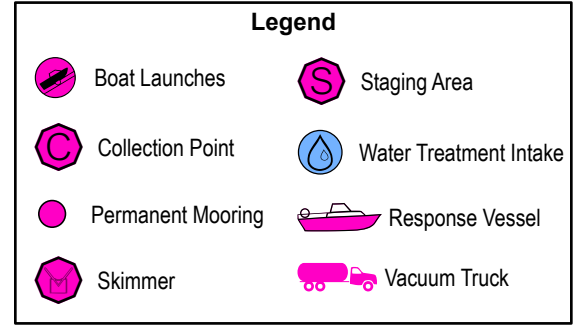
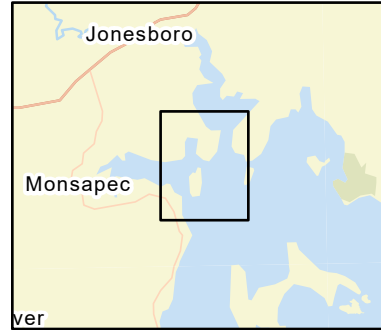
D-13-1

Mason Bay & Chandler River

Jonesboro / Jonesport / Roque Bluffs, ME



Date printed: 9/10/2022 7:54 PM



D-13-1 Mason Bay & Chandler River

Town Jonesport, Jonesboro, Roque Bluffs

Port Region Downeast

Latitude 44° 37.825' N **Longitude** 67° 33.046' W

NOAA Chart # 13326_1

Approx. Tidal Range (feet) 12

ESI Map # 11B, 11D

Max Current (knots) **Flood** **Ebb**

EVI Map # 85

Source **DeLorme Map # (2019)** 26 D2

Resources At Risk

ESI Primary Shoreline Type Exposed wave-cut platforms in bedrock, mud, or clay (2A)

ESI Secondary Shoreline Type Mixed sand and gravel beaches (5)

Environmental Concerns Shellfish, eelgrass, marine worms, diadromous fish and shorebirds in Mason Bay and Chandler River

Archaeological Conflicts Use boulder or tree anchors on south side of Look Head. Deviations from GRS design will require MHPC review. Contact MHPC at (207) 287-2132.

Strategy Information

Strategy Purpose To divert oil from Mason Bay and Chandler River

Staging Areas Flake Point bar at end of Flake Point Road, Jonesport and road at end of Looks Point Road in Jonesboro.

Site Access Flake Point bar and Look Point or Chandler Bay boat ramp.

Nearest Boat Ramp Chandler Bay boat ramp, Evergreen Point Road, Jonesboro (all tide)

Collection Points Flake Point Bar

Special Instructions

Work Assignment Deploy two 400 foot sections of boom from Flake Point to Dunn Island. Deploy two 500 foot sections of boom between Dunn Island and Look Head. Deploy three 400 foot sections of boom across Chandler River.

Recommended Equipment / Resources

Length of Boom (feet) 2600

Type of Boom 12" to 18" containment boom

Recommended Equipment (Minimum)
9 - anchor systems: 35 lb. Danforth or equivalent and line for 3:1 scope plus tag lines and buoys.
5 - shoreside connections
2 - vacuum trucks or skimmers and storage
2 - 4 workboats with minimum 90 hp
2 - 4 boat operators
4 - 8 - laborers

Unless otherwise indicated, the boom length given is the distance measured on the chart. Actual length required may vary with conditions.

Last Desktop Validation: 5/3/2019

Last Field Visit: 6/26/2007

Last Field Test: