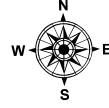


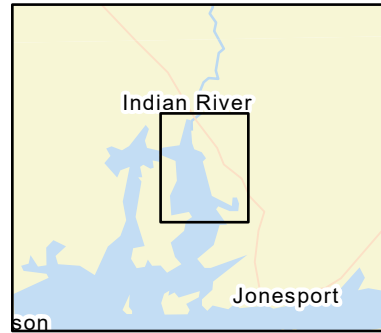
D-12-2

Wohoa Bay: Indian River Jonesport, ME

0 1,000 2,000
Feet

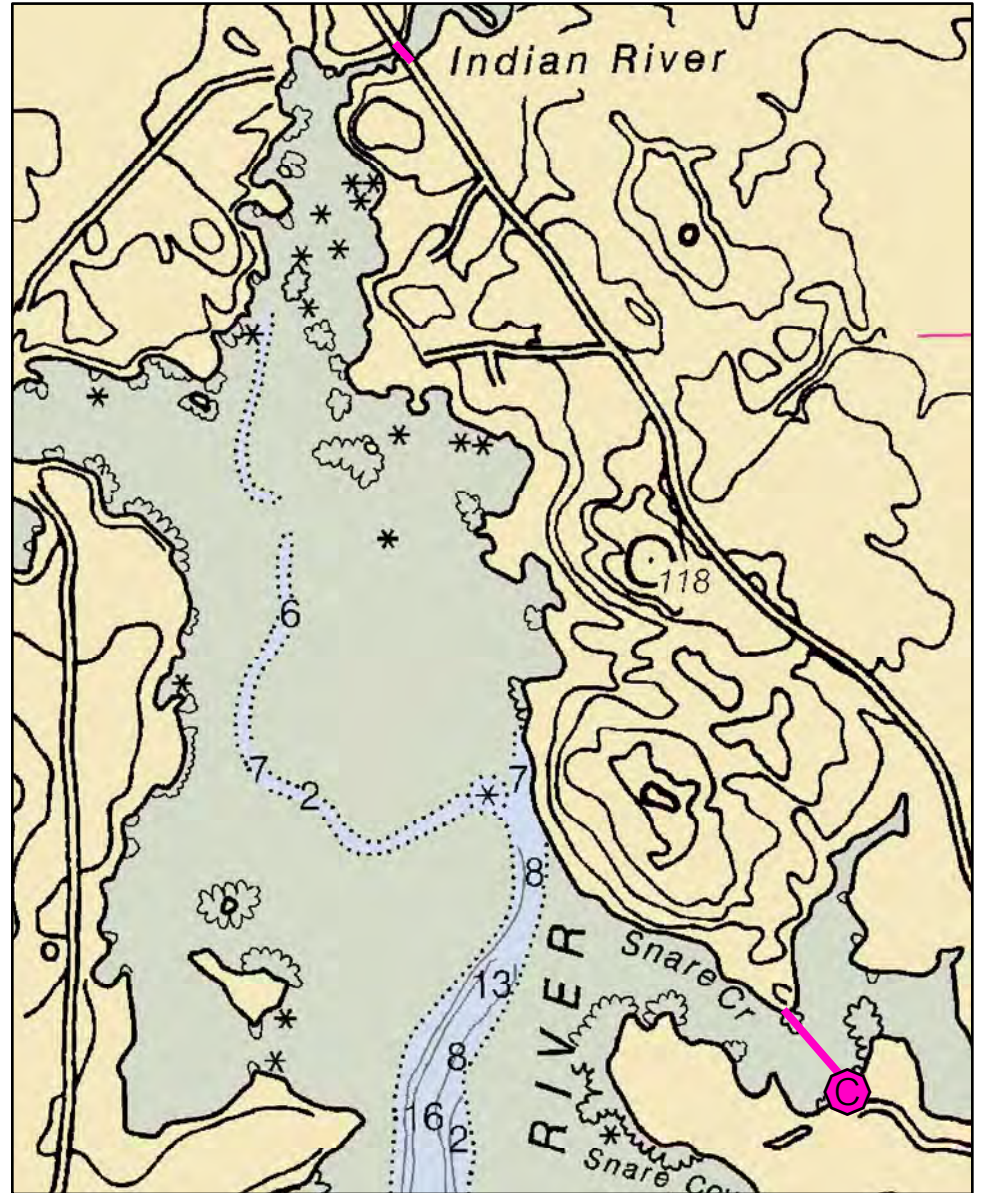
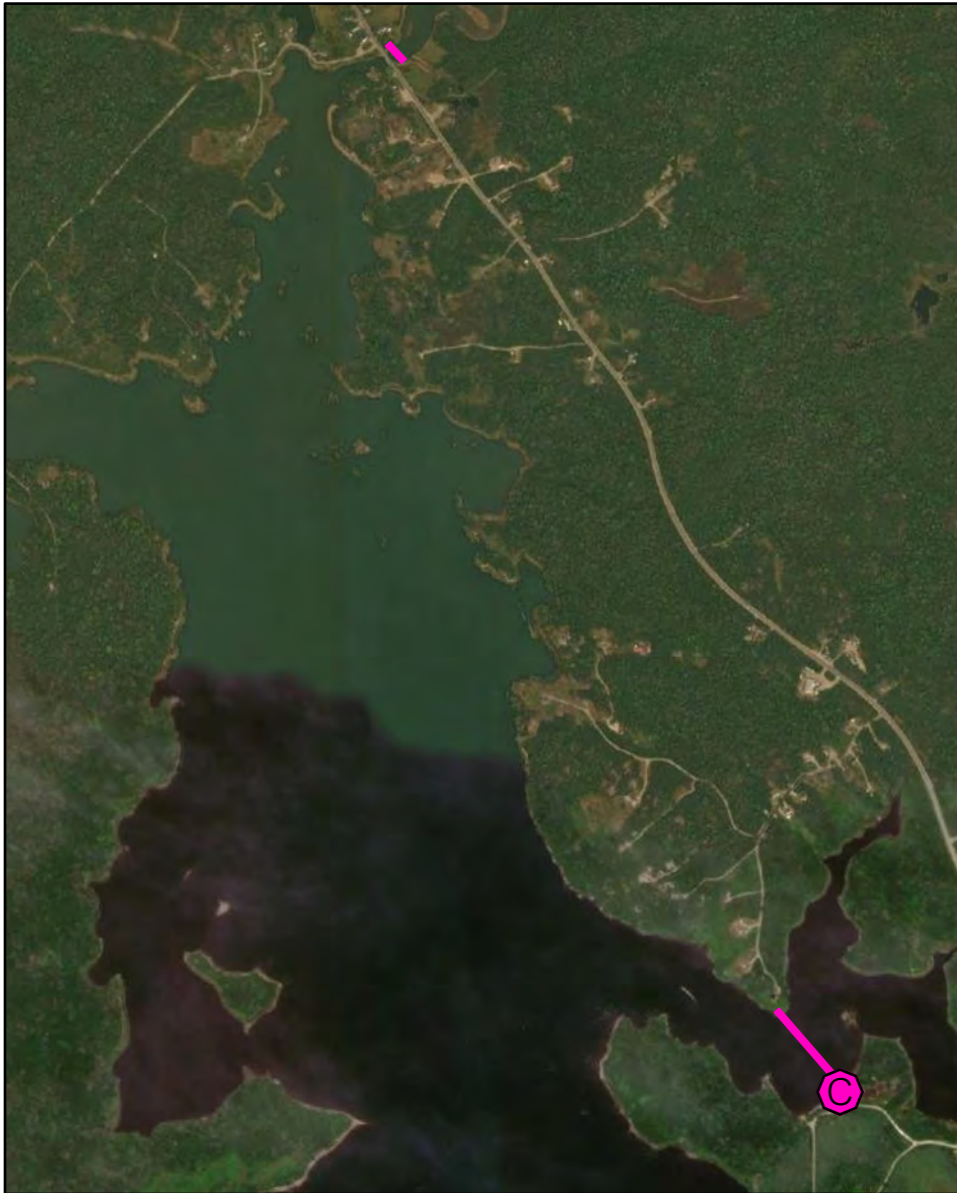


Date printed: 9/10/2022 7:54 PM



Legend

	Boat Launches		Staging Area
	Collection Point		Water Treatment Intake
	Permanent Mooring		Response Vessel
	Skimmer		Vacuum Truck



D-12-2 Wohoa Bay: Indian River

Town Addison / Jonesport

Port Region Downeast

Latitude 44° 33.49' N **Longitude** 67° 38.647' W

NOAA Chart # 13326_1

Approx. Tidal Range (feet) Tidal flat

ESI Map # 12C

Max Current (knots) Flood Ebb

EVI Map # 84

Source **DeLorme Map # (2019)** 26 E1

Resources At Risk

ESI Primary Shoreline Type Vegetated low banks (9B)

ESI Secondary Shoreline Type

Environmental Concerns Coves of Indian River contain eelgrass, shorebird habitat and mudflats

Archaeological Conflicts None noted. Contact MHPC at (207) 287-2132 if archaeological items are discovered.

Strategy Information

Strategy Purpose Secondary strategies to D-12-1. Divert oil from Snare Creek and upper Indian River if D-12-1 is not effective.

Staging Areas Rite 187 and end of Janet's Lane off of Alexander Ave in Jonesport (south end of boom)

Site Access From Rte. 187 and end of Janet's Lane off Alexander Ave in Jonesport

Nearest Boat Ramp West River Landing, Basin Road, Addison

Collection Points At Route 187 and end of Janet's Lane off Alexander Ave in Jonesport

Special Instructions Strategies secondary to D-12-1 to be deployed if that is not effective. Snare Creek can only be accessed by boat at higher water

Work Assignment Deploy 750 feet across Snare Creek, and ensure that oil is not able to pass culvert at Rte. 187. Use 150 feet of boom here if necessary

Recommended Equipment / Resources

Length of Boom (feet) 900

Type of Boom 12" to 18" containment boom

Recommended Equipment (Minimum)

Snare Creek:

Indian River at Rte. 187:

- 1 - anchor systems: 35 lb. Danforth or equivalent and line for 3:1 scope plus tag lines and buoys.
- 2 - shoreside connections
- 1 - vacuum truck or skimmer and storage
- 1 - shallow draft workboat
- 1 - boat operators
- 2 - laborers

2 laborers

Unless otherwise indicated, the boom length given is the distance measured on the chart. Actual length required may vary with conditions.

Last Desktop Validation: 5/3/2019

Last Field Visit

Last Field Test: