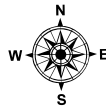
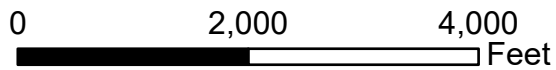


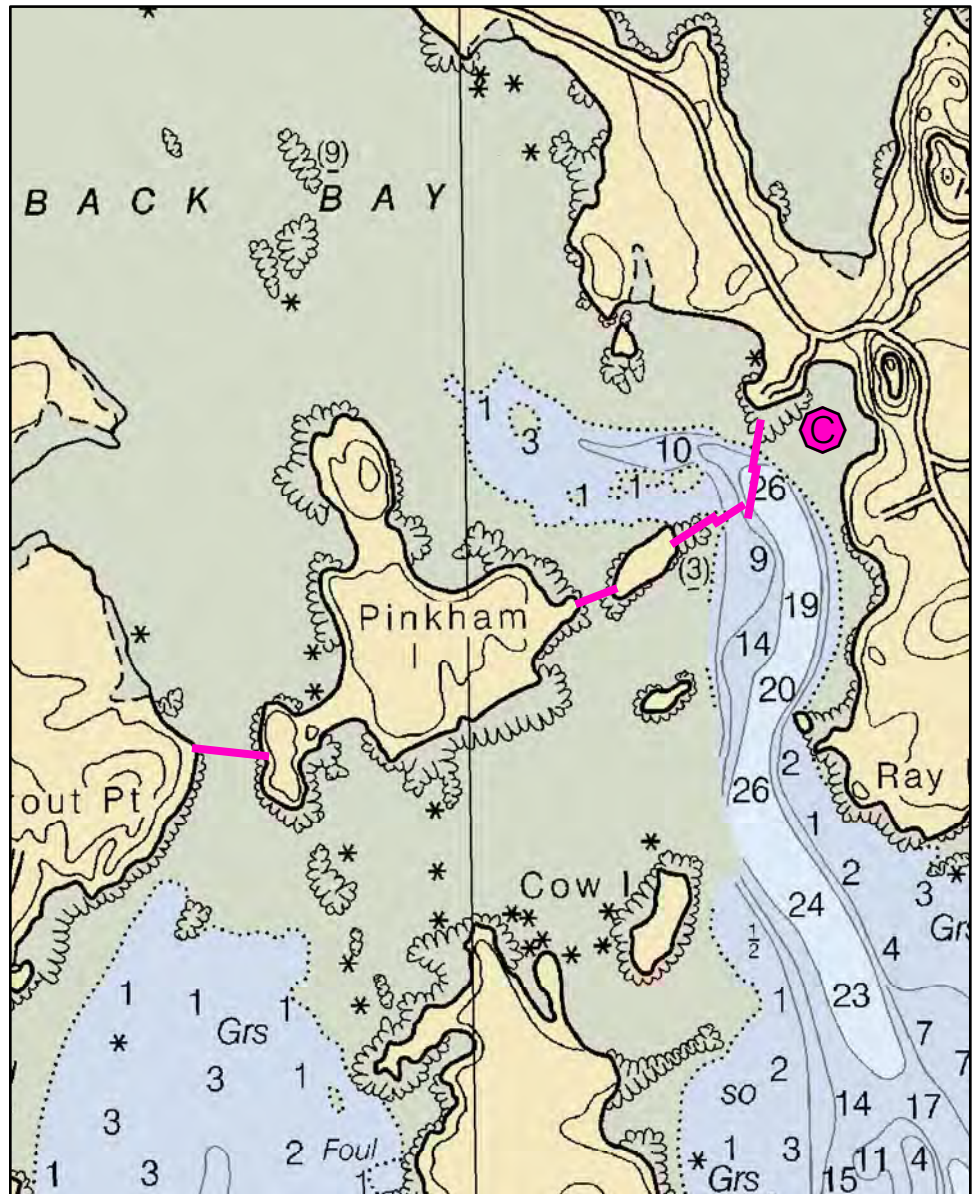
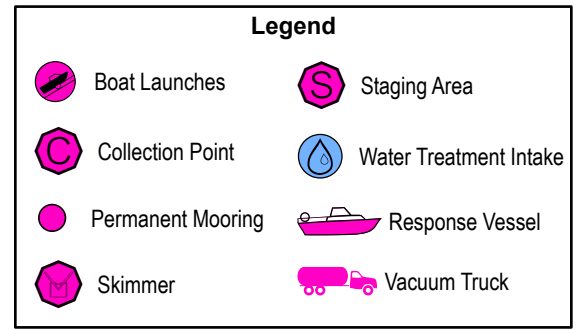
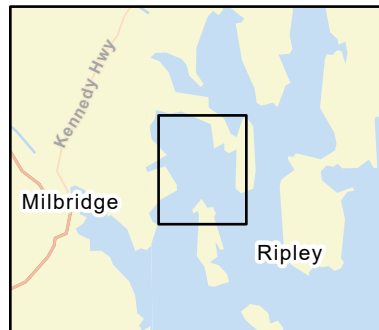
# D-06-1

Back Bay

Milbridge, ME



Date printed: 9/10/2022 7:54 PM



# D-06-1 Back Bay

**Town** Milbridge

**Latitude** 44° 32.987' **Longitude** 67° 49.409'

**Approx. Tidal Range (feet)** 12

**Max Current (knots)** **Flood** **Ebb**

**Source**

**Port Region** Downeast

**NOAA Chart #** 13324\_1

**ESI Map #** 13A

**EVI Map #** 83, 79, 82, 78

**DeLorme Map # (2019)** 25 E3, E4

## Resources At Risk

**ESI Primary Shoreline Type** Mixed sand and gravel beaches (5)

**ESI Secondary Shoreline Type**

**Environmental Concerns** Extensive mudflats, shellfish beds and highly vulnerable shorebird areas, especially upper reaches of Beaver Meadow Brook (salt marshes)

**Archaeological Conflicts** None noted. Contact MHPC at (207) 287-2132 if archaeological items are discovered.

## Strategy Information

**Strategy Purpose** To exclude / divert oil from entering Back Bay

**Staging Areas** Harrington town ramp at Ripley Cove, Marshville Road, Harrington. May be able to pull boom from Ray's Point Road in Milbridge from small beach with access at the first right after Wallace Cove Lane

**Site Access** All tide ramp at Ripley Cove off Marshville Road in Harrington. May have access from small beach on Ray's Point Road in Milbridge (condition unknown)

**Nearest Boat Ramp** Town of Harrington boat ramp, Marshville Road, Harrington

**Collection Points** Possibly from small cove on northwest side of Ray Point neck.

**Special Instructions** Current speeds unknown. Observe before deployment.

**Work Assignment** Deploy 600' of boom from Strout Point to western point on Pinkham Island. Deploy 300' of boom from eastern point on Pinkham Island to western point of unnamed island east of Pinkham Island. Deploy one 400 foot section and one 300 foot section of boom from eastern shore of unnamed island in a easterly direction and anchor in the middle of channel. Deploy two 400 foot sections of boom from Ray Point Road boat ramp in a westerly direction & anchor in the middle of channel to form an open apex with the first section.

## Recommended Equipment / Resources

**Length of Boom (feet)** 2400

**Type of Boom** 12" - 18" containment boom

**Recommended Equipment (Minimum)**  
6 - anchor systems: 35 lb. Danforth or equivalent and line for 3:1 scope plus tag lines and buoys.  
6 - shoreside connections  
1 - vacuum truck or skimmer and storage  
2 - workboats with minimum 90 hp  
2 - boat operators  
6 - laborers

Unless otherwise indicated, the boom length given is the distance measured on the chart. Actual length required may vary with conditions.

Last Desktop Validation: 5/1/2019

Last Field Visit: 6/27/2007

Last Field Test: