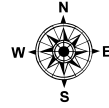
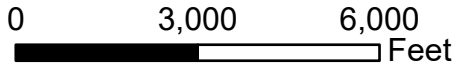
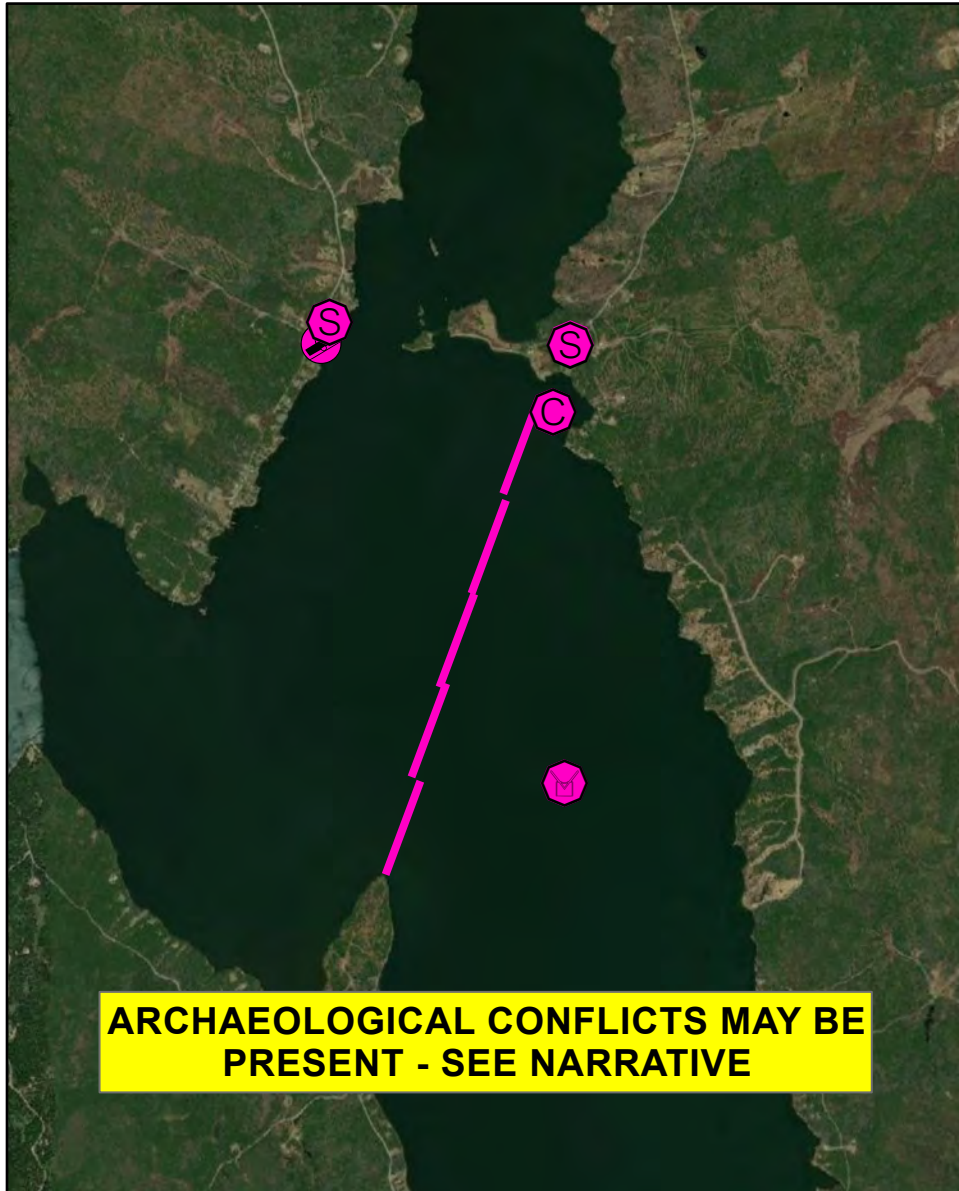
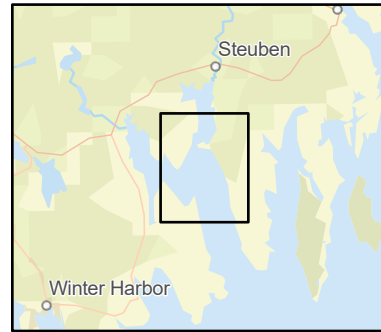


# D-02-1

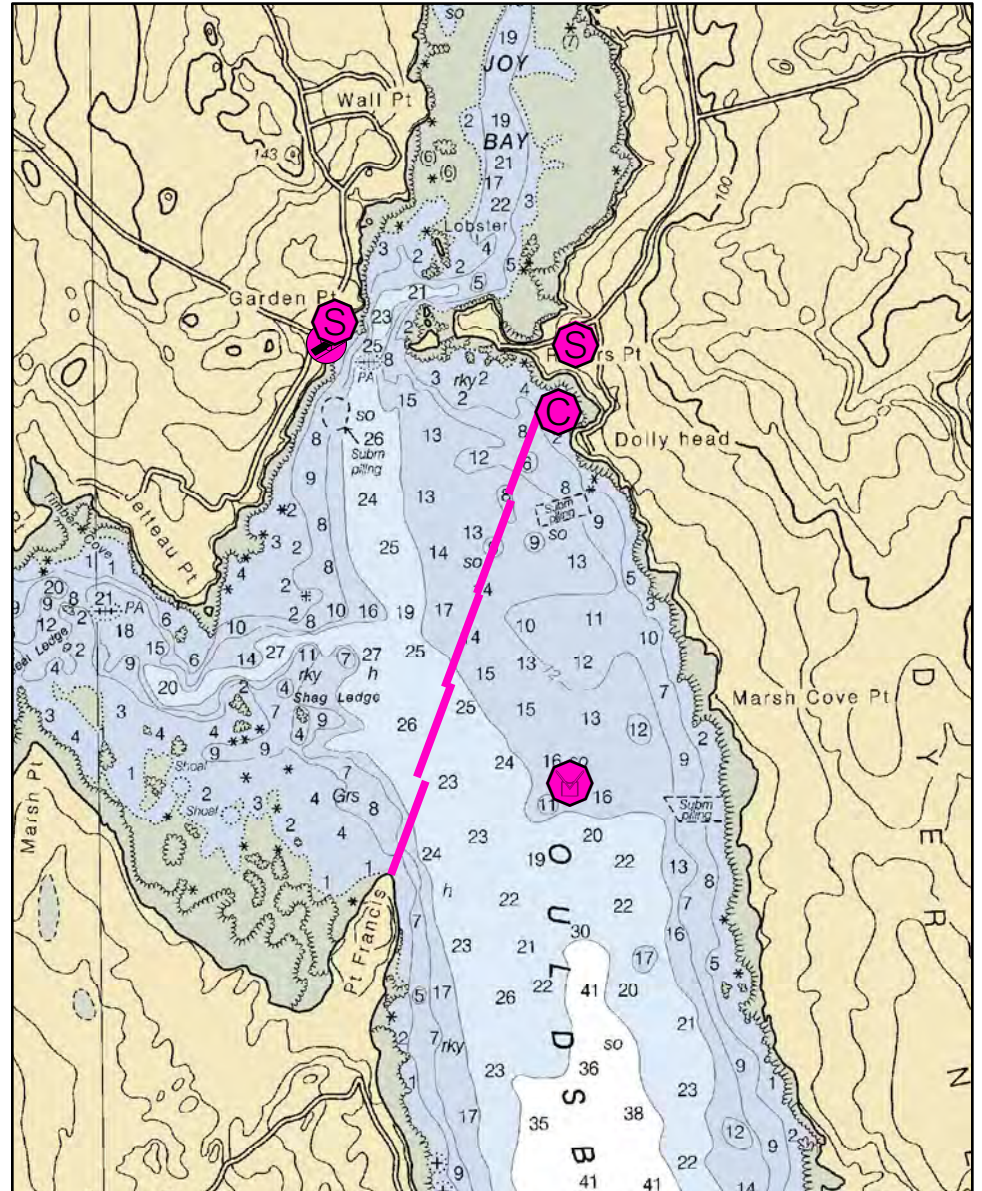
## Inner Gouldsboro Bay Gouldsboro, ME



Date printed: 9/10/2022 7:53 PM



**ARCHAEOLOGICAL CONFLICTS MAY BE PRESENT - SEE NARRATIVE**



# D-02-1 Inner Gouldsboro Bay

Town Gouldsboro

Port Region Downeast

Latitude 44° 27.482 Longitude 67° 58.654

NOAA Chart # 13324\_1

Approx. Tidal Range (feet) 12

ESI Map # 19B

Max Current (knots) Flood Ebb

EVI Map # 78, 70

Source DeLorme Map # (2019) 17 A2

## Resources At Risk

ESI Primary Shoreline Type Mixed sand and gravel beaches (5)

ESI Secondary Shoreline Type

Environmental Concerns Upper reaches of Gouldsboro Bay contain many sensitive areas including a portion of Petit Manan National Wildlife Refuge as well as extensive mudflats, shellfish beds, shorebird areas and marsh.

Archaeological Conflicts Keep northern anchor point close to developed areas in Dolly Head or on Howards Lane. Sunken wreck on southern portion of spread. Deviations from GRS design will require MHPC review. Contact MHPC at (207) 287-2132.

## Strategy Information

Strategy Purpose Although huge, the purpose of this strategy is to prevent oil from reaching the Upper Bay to the greatest extent possible.

Staging Areas Gouldsboro Point Boat Launch, at the intersection of Gouldsboro Point Road and Old County Road in Gouldsboro has an all-tide ramp but little room on shore. West Bay Boats, on the east side of the strategy (8 town Landing Road, Steuben, 207-546 4300), has more room but no launch. It may be possible to pull boom from Howard Drive nearby, or from other areas of shore along Rogers Point Road.

Site Access Same as staging areas

Nearest Boat Ramp Gouldsboro Point Boat Launch, intersection of Gouldsboro Point Road and Old County Road, Gouldsboro

Collection Points Open water collection/recovery or vicinity of Howards Drive, Steuben

Special Instructions Observe current for feasibility before deployment

Work Assignment If resources allow, booming across the entire bay extent could be attempted with 5,000 feet of boom. If these resources are not available, a combination of on-water skimming and booming / collection in the main portion of the channel will mitigate damage to the upper reaches.

## Recommended Equipment / Resources

Length of Boom (feet) Type of Boom 12" to 18" containment boom or larger

Recommended Equipment (Minimum) Up to 10 - anchor systems: 35 lb. Danforth or equivalent and line for 3:1 scope plus tag lines and buoys.  
2 - shoreside connections  
1 - vacuum truck or skimmer and storage  
2 - 4 - workboats with minimum 90 hp  
2 - 4 - boat operators  
6 - 8 - laborers  
  
Possibly large open water skimmers and collection

Unless otherwise indicated, the boom length given is the distance measured on the chart. Actual length required may vary with conditions.

Last Desktop Validation: 4/24/2019

Last Field Visit

Last Field Test: