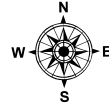
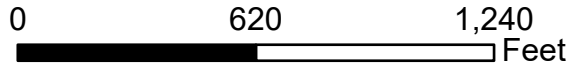


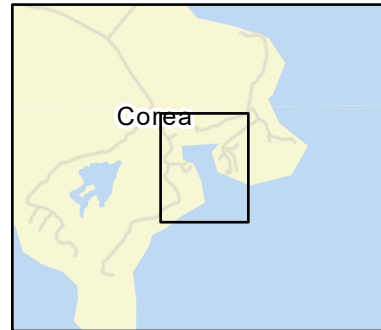
# D-01-1

Corea Harbor

Corea, ME

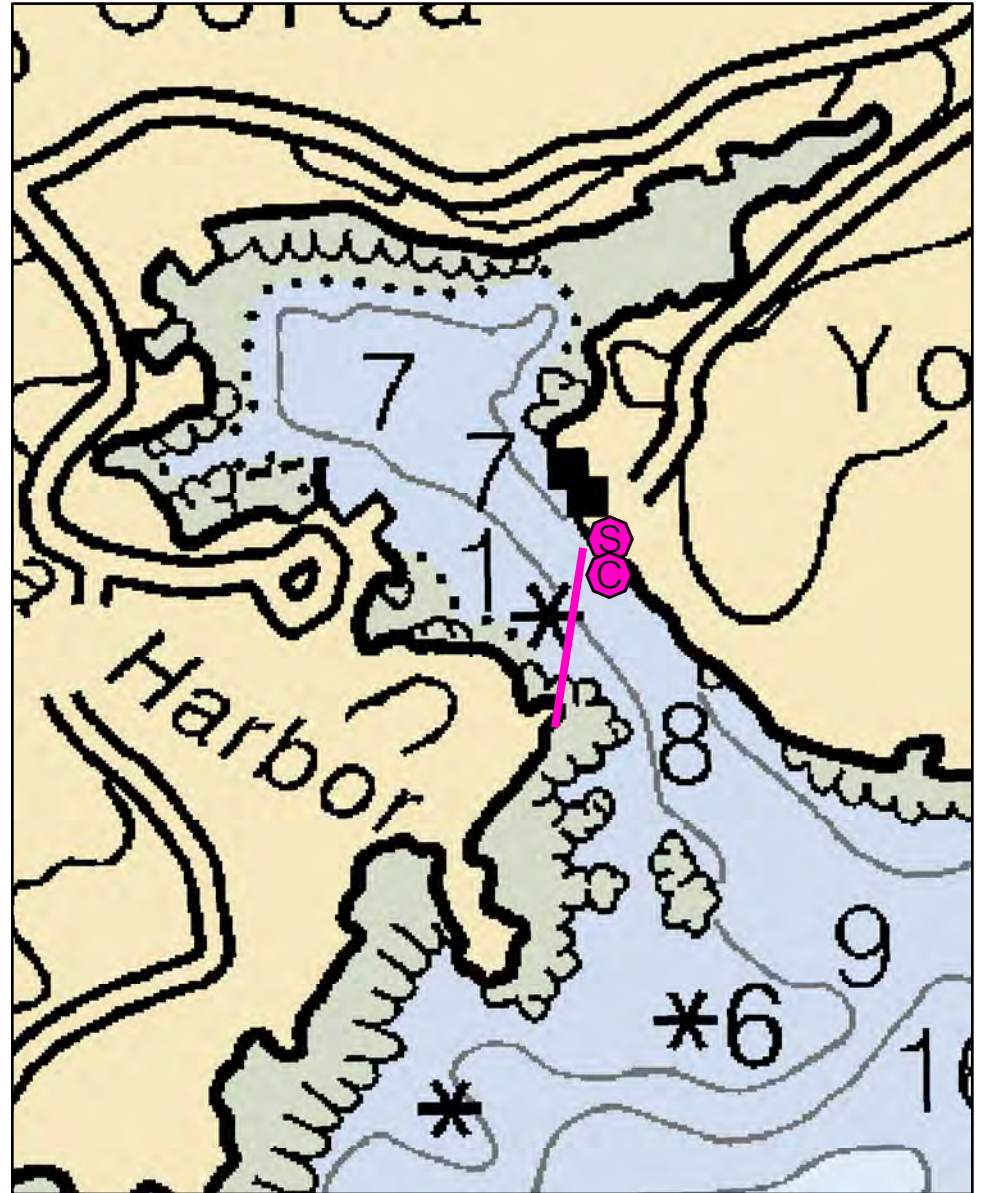


Date printed: 9/10/2022 7:53 PM



**Legend**

	Boat Launches		Staging Area
	Collection Point		Water Treatment Intake
	Permanent Mooring		Response Vessel
	Skimmer		Vacuum Truck



# D-01-1 Corea Harbor

**Town** Corea, ME

**Latitude** 44° 23.849      **Longitude** 67° 58.199

**Approx. Tidal Range (feet)** 12

**Max Current (knots)**      **Flood**      **Ebb**

**Source**      **DeLorme Map # (2019)** 17 B2

**Port Region** Downeast

**NOAA Chart #** 13324\_1

**ESI Map #** 19D

**EVI Map #** 78, 77

## Resources At Risk

**ESI Primary Shoreline Type** Mixed sand and gravel beaches (5)

**ESI Secondary Shoreline Type** Sheltered, solid man-made structures (8B)

**Environmental Concerns** Eelgrass, lobster pound and lobster dealer in harbor

**Archaeological Conflicts** None noted. Contact MHPC at (207) 287-2132 if archaeological items are discovered.

## Strategy Information

**Strategy Purpose** To divert oil from inner Corea Harbor

**Staging Areas** Possibly Corea Lobster Cooperative (207-963-7936) on east side of harbor, 199 Crowley Island Road, Corea, or lobster pound on west side of harbor

**Site Access** Wharf on east side at co-op, and small part-tide boat launch on west side at lobster pound

**Nearest Boat Ramp** Small part tide launch on western side of harbor. Nearest all-tide ramp is Gouldsboro Point Boat Launch at intersection of Gouldsboro Point Road and Old County Road in Gouldsboro

**Collection Points** Corea Lobster Cooperative

**Special Instructions** Area is very shallow, will need small boat(s)

**Work Assignment** Deploy 450 feet of containment boom across harbor from Francis Lobster Pound to Corea Lobster Cooperative. Place anchor at mid-point.

## Recommended Equipment / Resources

**Length of Boom (feet)** 450

**Type of Boom** 12" - 18" containment boom

**Recommended Equipment (Minimum)**

- 1 - anchor system: 35 lb. Danforth or equivalent and line for 3:1 scope plus tag line and buoy.
- 2 - shoreside connections
- 1 - vacuum truck or skimmer and storage
- 1 - 2 small workboats
- 1 - 2 boat operators
- 2 - laborers

Unless otherwise indicated, the boom length given is the distance measured on the chart. Actual length required may vary with conditions.

Last Desktop Validation: 4/24/2019

Last Field Visit

Last Field Test: