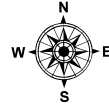
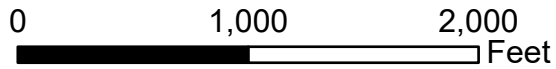


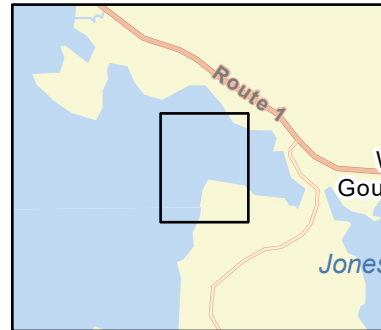
C-41-1

Flanders Bay

Gouldsboro, ME

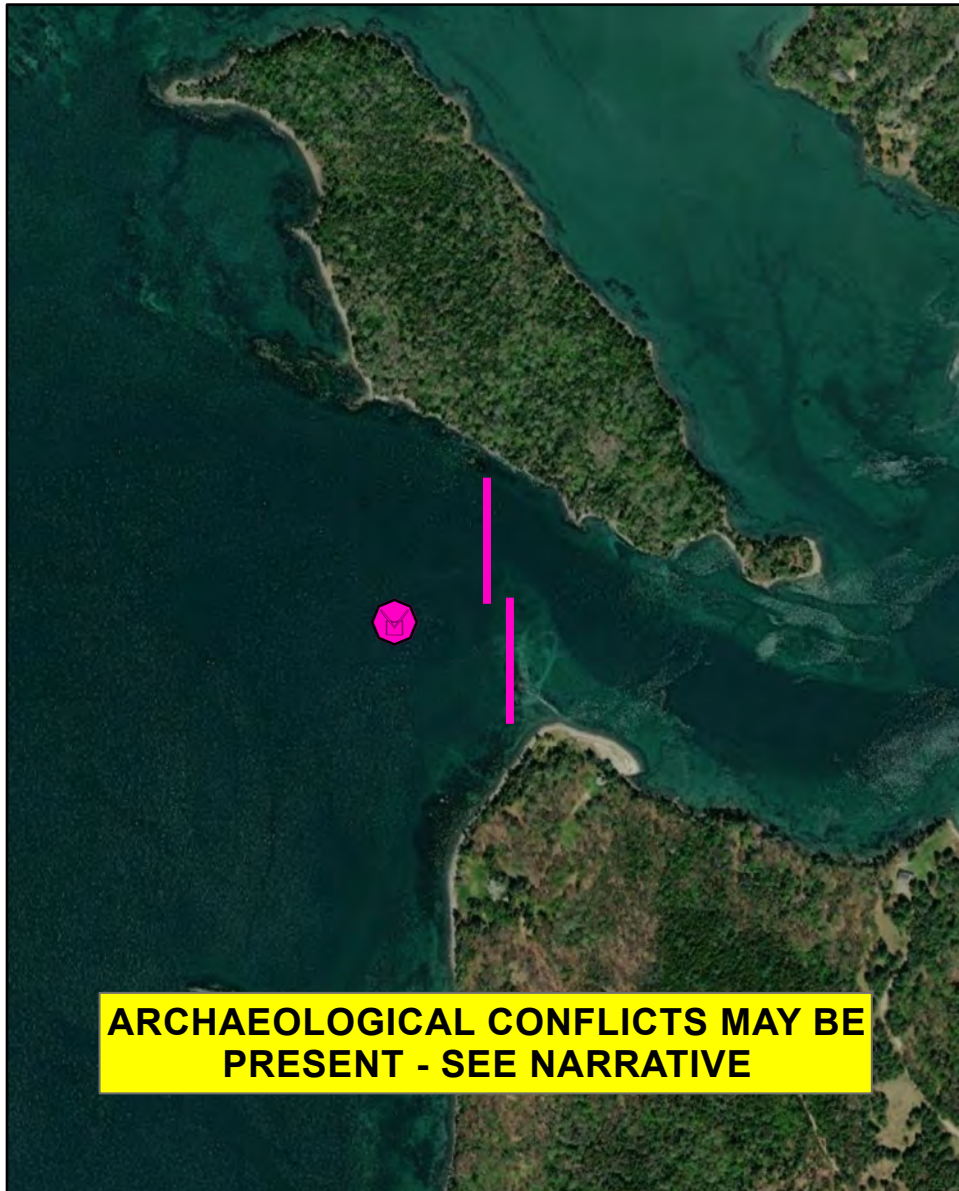


Date printed: 9/13/2022 8:36 AM

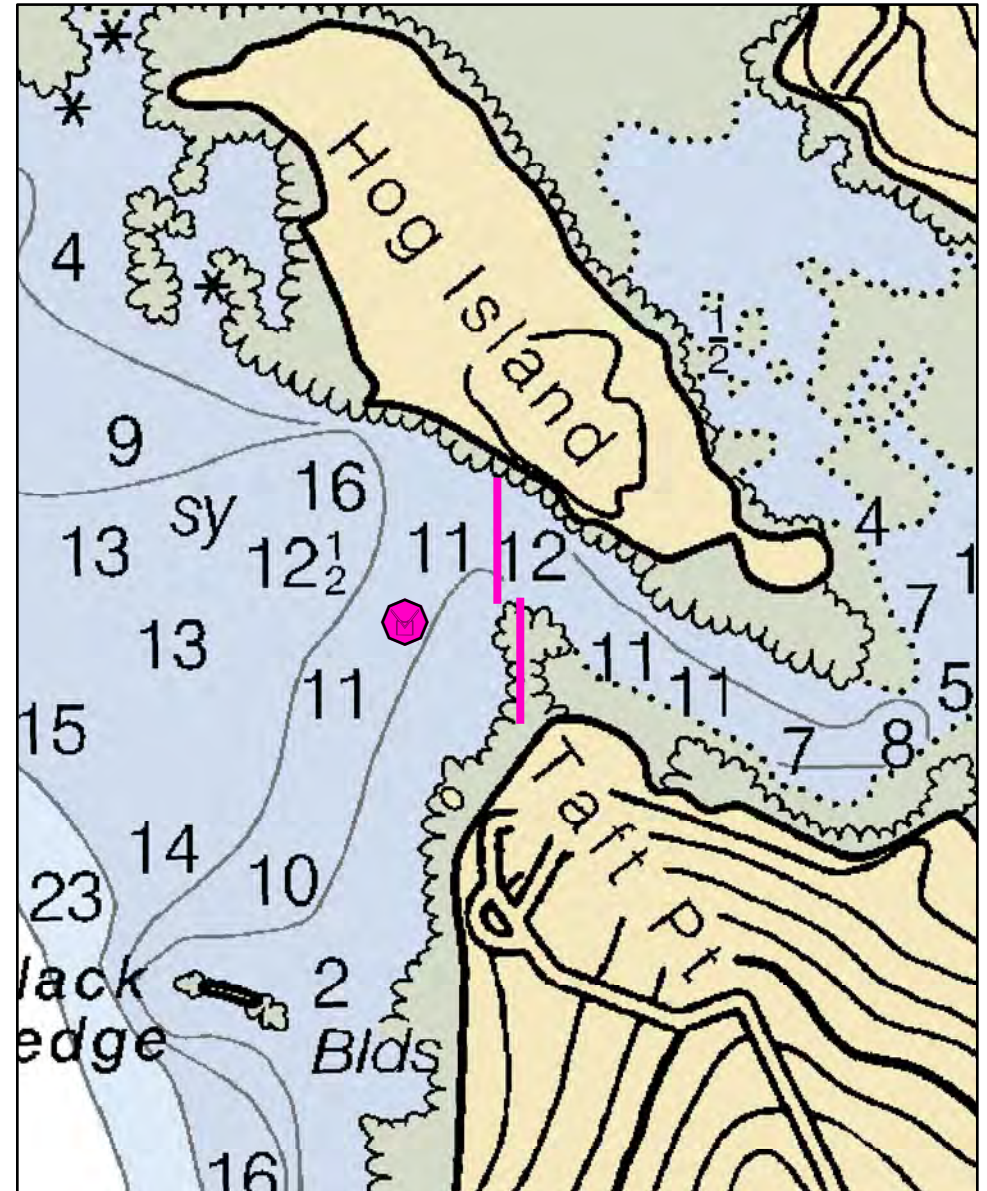


Legend

	Boat Launches		Staging Area
	Collection Point		Water Treatment Intake
	Permanent Mooring		Response Vessel
	Skimmer		Vacuum Truck



ARCHAEOLOGICAL CONFLICTS MAY BE PRESENT - SEE NARRATIVE



C-41-1 Flanders Bay

Town Gouldsboro

Latitude 44° 27.799' N **Longitude** 68° 7.276' W

Approx. Tidal Range (feet) 11

Max Current (knots) Flood Ebb

Source

Port Region Penobscot Bay

NOAA Chart # 13318_1

ESI Map # 20A

EVI Map # 69

DeLorme Map # (2019) 16 A5

Resources At Risk

ESI Primary Shoreline Type Sheltered rocky shores (8A)

ESI Secondary Shoreline Type Mixed sand and gravel beaches (5)

Environmental Concerns Jones Cove has shorebird habitat, shellfish beds, eelgrass, marine worm habitat and diadromous fish. Other coves in bay are smaller but have similar habitats.

Archaeological Conflicts Use boulder or tree anchors on Hogs Island. Deviations from GRS design will require MHPC review. Contact MHPC at (207) 287-2132.

Strategy Information

Strategy Purpose To exclude oil from the main channel into Jones Cove, and use JBF skimmer to attempt to collect product in areas where there may be eddies in the quieter areas of the channel.

Staging Areas Bunker Cove boat ramp, Shore Road, Gouldsboro or Sorrento Harbor and town dock, intersection of Main St. and Ocean Ave., Sorrento

Site Access By water from Gouldsboro or Sorrento Harbor (see below)

Nearest Boat Ramp Bunker Cove ramp in Gouldsboro has an all-tide public ramp (end of Shore Road, Gouldsboro). Sorrento Harbor has a small part-tide ramp. Both are about 3 miles from site.

Collection Points N/A

Special Instructions Difficult access and limited collection other than skimmer

Work Assignment Deploy two 500 foot sections of boom between Hog Island southerly toward Taft Point. Deploy JBF skimmer in bay.

Recommended Equipment / Resources

Length of Boom (feet) 1000 **Type of Boom** 12" - 18" containment boom

Recommended Equipment (Minimum)
2 - anchor systems: 35 lb. Danforth or equivalent and line for 3:1 scope plus tag lines and buoys.
2 - shoreside connections
1 - JBF skimmer
1 - workboats with minimum 90 hp
2 - boat operators
4 - laborers

Unless otherwise indicated, the boom length given is the distance measured on the chart. Actual length required may vary with conditions.

Last Desktop Validation: 2/14/2019

Last Field Visit

Last Field Test: