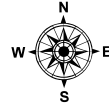
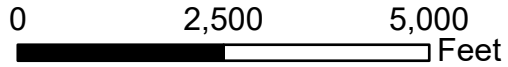
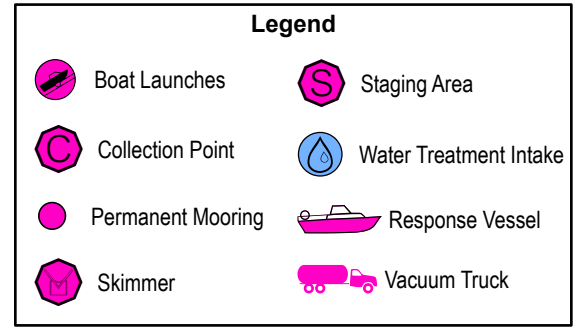
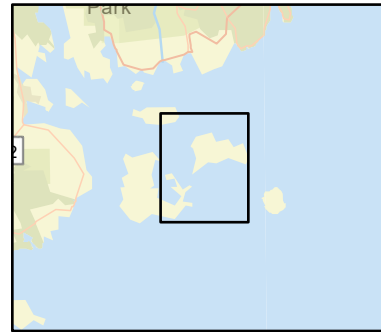


C-35-1

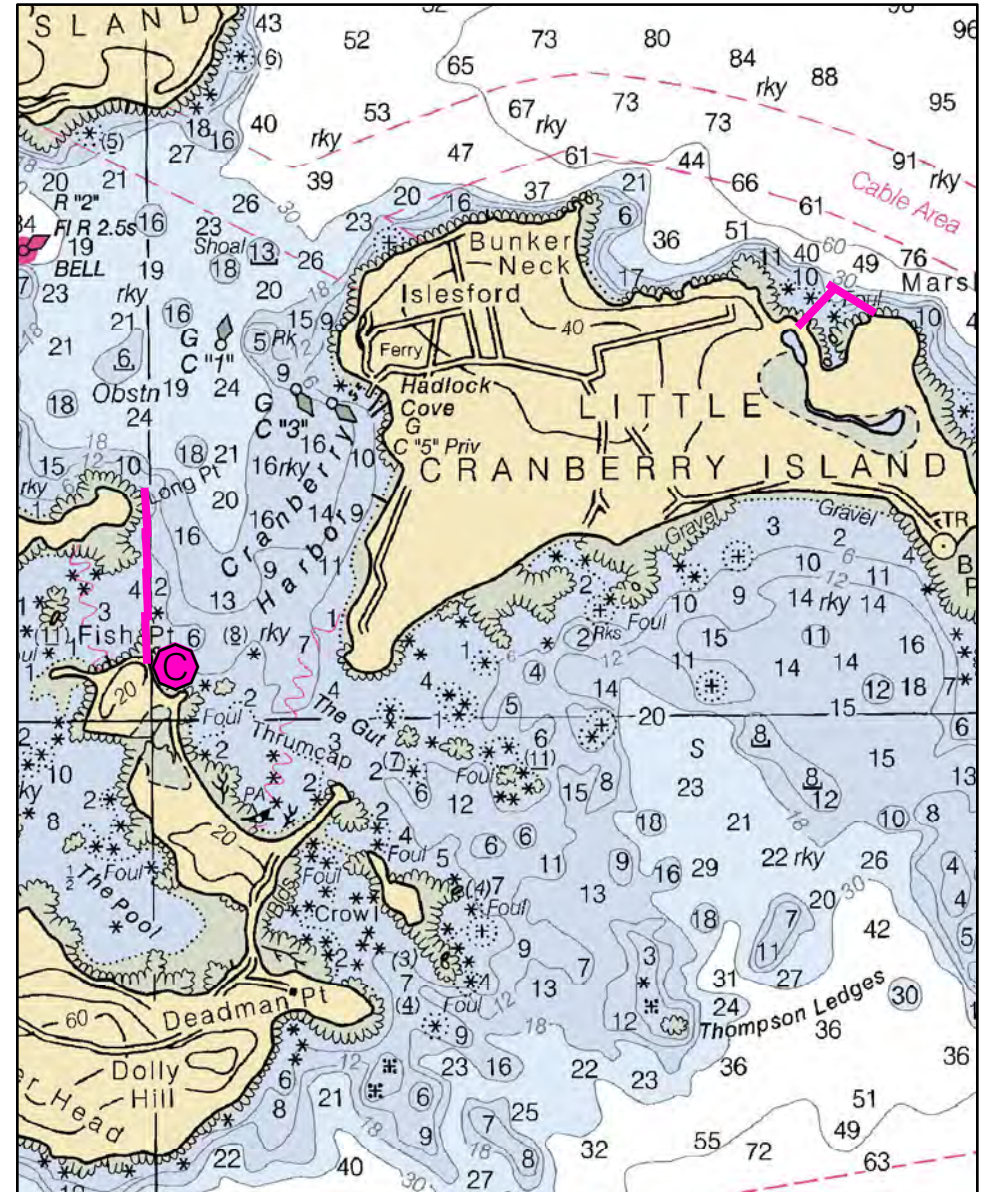
Cranberry Islands Cranberry Isles, ME



Date printed: 9/10/2022 7:53 PM



ARCHAEOLOGICAL CONFLICTS MAY BE PRESENT - SEE NARRATIVE



C-35-1 Cranberry Islands

Town	Cranberry Isles	Port Region	Penobscot Bay
Latitude	44° 15.198' N	Longitude	68° 14.591' W
Approx. Tidal Range (feet)	11	NOAA Chart #	13318_1
Max Current (knots)	Flood 1 knot	ESI Map #	26A
	Ebb	EVI Map #	62, 57
Source	Local knowledge estimate	DeLorme Map # (2019)	16 C3,C4,D3,D4

Resources At Risk

ESI Primary Shoreline Type	Exposed wave-cut platforms in bedrock, mud, or clay (2A)
ESI Secondary Shoreline Type	Mixed sand and gravel beaches (5)

Environmental Concerns Marsh Head area has island's only salt marsh habitat. Both areas contain eelgrass, shellfish beds and shorebird habitat. The Pool is a federal coastal barrier resource area. Eagles nest and endangered plant recorded near Pool.

Archaeological Conflicts Great Cranberry: utilize boulder or tree anchors if possible on both north and south ends of boom spread. Deviations from GRS design will require MHPC review. Contact MHPC at (207) 287-2132.

Strategy Information

Strategy Purpose	Primary objective is to divert oil from entering "the Pool" on Great Cranberry Island. Secondary objective is to block off the inlet to the marsh on Little Cranberry Island.
Staging Areas	Great Cranberry: Town dock on Great Cranberry Road. Could probably also pull boom from here. Little Cranberry: Town dock at 1 Main Street, Islesford. May be able to pull boom from here or closer to booming site from private residence at end of Bunker's Head Road.
Site Access	See staging areas
Nearest Boat Ramp	Southwest Harbor all tide boat ramp, Shore Road (Mount Desert mainland). Best access may be from Beal & Bunker barge service out of Northeast Harbor: (207) 244-3575
Collection Points	Limited. Primarily exclusion. May be able to do some collection from sand and gravel area at south end of strategy for Great Cranberry Island.
Special Instructions	Land adjacent to "The Pool" is owned by Acadia National Park. Contact Acadia National Park: Bob Bechtold, Park Environmental and Safety Program Coordinator: 207-888-8752 or 207-664-8814 after hours. National Park Service numbers: 888-614-0672 or 888-809-7095.
Work Assignment	Great Cranberry: Deploy four 500 foot lengths of boom spanning from Fish Point to Long Point. Little Cranberry: Protect the marsh on Little Cranberry Island's Marsh Head by placing two to four lengths of boom totaling 1200 feet in length alongshore to protect and exclude oil from entering the marsh. Difficult due to rocks in vicinity. Use caution.

Recommended Equipment / Resources

Length of Boom (feet)	2800	Type of Boom	12" to 28" containment boom
Recommended Equipment (Minimum)	Great Cranberry Island: 6 - anchor systems: 35 lb. Danforth or equivalent and line for 3:1 scope plus tag lines and buoys. 2 - shoreside connections 1 - vacuum truck or skimmer and storage 2 - workboats with minimum 90 hp 2 - boat operators 4 - laborers	Little Cranberry Island: 2 to 5 - anchor systems: 35 lb. Danforth or equivalent and line for 3:1 scope plus tag lines and buoys. 2 - shoreside connections 2 - workboats with minimum 90 hp 2 - boat operators 4 - laborers	

Unless otherwise indicated, the boom length given is the distance measured on the chart. Actual length required may vary with conditions.

Last Desktop Validation: 1/17/2019

Last Field Visit: 8/18/2008

Last Field Test: