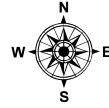
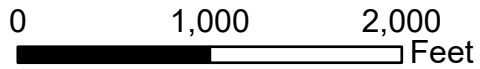


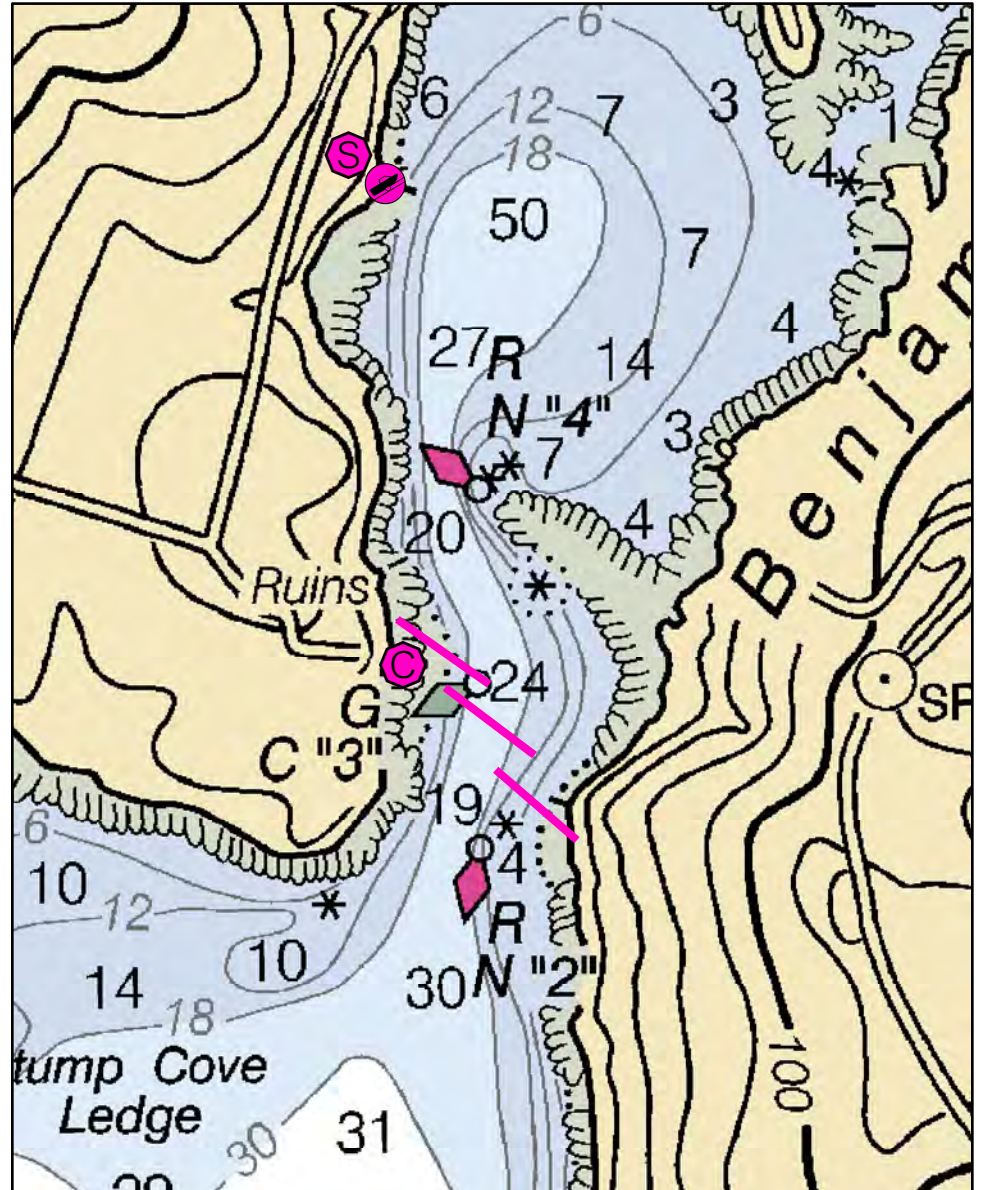
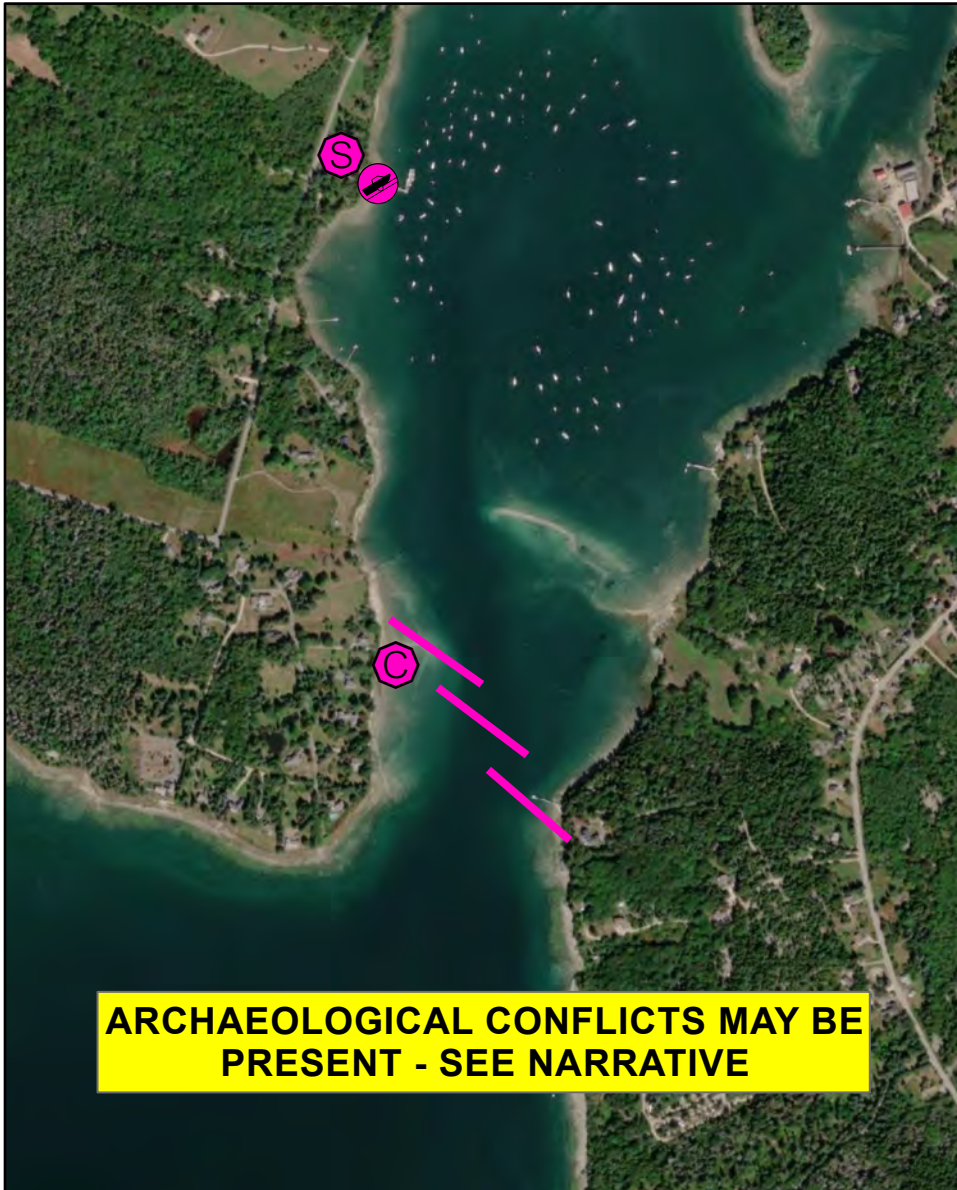
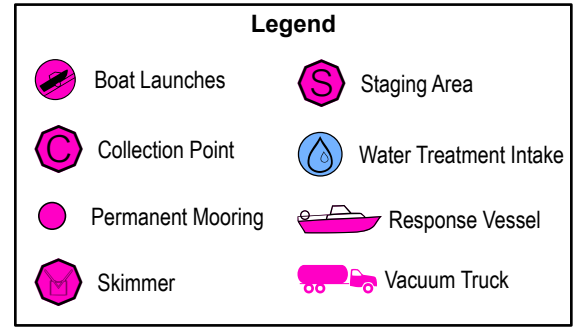
C-25-1

Benjamin River

Sedgwick / Brooklin, ME



Date printed: 9/11/2022 6:50 AM



C-25-1 Benjamin River

Town	Sedgwick / Brooklin	Port Region	Penobscot Bay
Latitude	44° 17.288' N	Longitude	68° 37.654' W
Approx. Tidal Range (feet)	10	NOAA Chart #	13316_1
Max Current (knots)	Flood	ESI Map #	28A, 27B, 22C
Source	Ebb	EVI Map #	59
		DeLorme Map # (2019)	15 C4

Resources At Risk

ESI Primary Shoreline Type	Exposed tidal flats (7)
ESI Secondary Shoreline Type	Mixed sand and gravel beaches (5)

Environmental Concerns Upper part of Benjamin River contains salt marsh, eelgrass, shorebird habitat. Shellfish and marine worm habitat.

Archaeological Conflicts No conflict as designed. Deviations from GRS design will require MHPC review. Contact MHPC at (207) 287-2132.

Strategy Information

Strategy Purpose	To divert oil from Benjamin River
Staging Areas	Sedgwick Town Landing at 103 Carter Point Road, Sedgwick, ME
Site Access	By water from town landing
Nearest Boat Ramp	Sedgwick Town Landing, 103 Carter Point Road, Sedgwick, ME
Collection Points	May be possible to collect from shoreline of private residence at 238 Carter Point Road in Sedgwick.
Special Instructions	Most sensitive area is above Route 175, but area near road is shallow and rocky. May be able to place a secondary strategy there.
Work Assignment	Place three 500 foot sections of boom across the channel from the vicinity of Red Nun 2 to Green Can 3.

Recommended Equipment / Resources

Length of Boom (feet)	1500	Type of Boom	12" - 18" containment boom
Recommended Equipment (Minimum)	4 - anchor systems: 40 lb. Danforth or equivalent and line for 3:1 scope plus tag lines and buoys. 2 - shoreside connection 1 - vacuum truck or skimmer and storage 2 - workboats with minimum 90 hp 2 - boat operators 4 - laborers		

Unless otherwise indicated, the boom length given is the distance measured on the chart. Actual length required may vary with conditions.

Last Desktop Validation: 1/10/2019

Last Field Visit

Last Field Test: