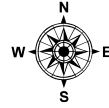
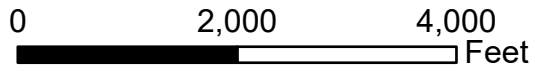
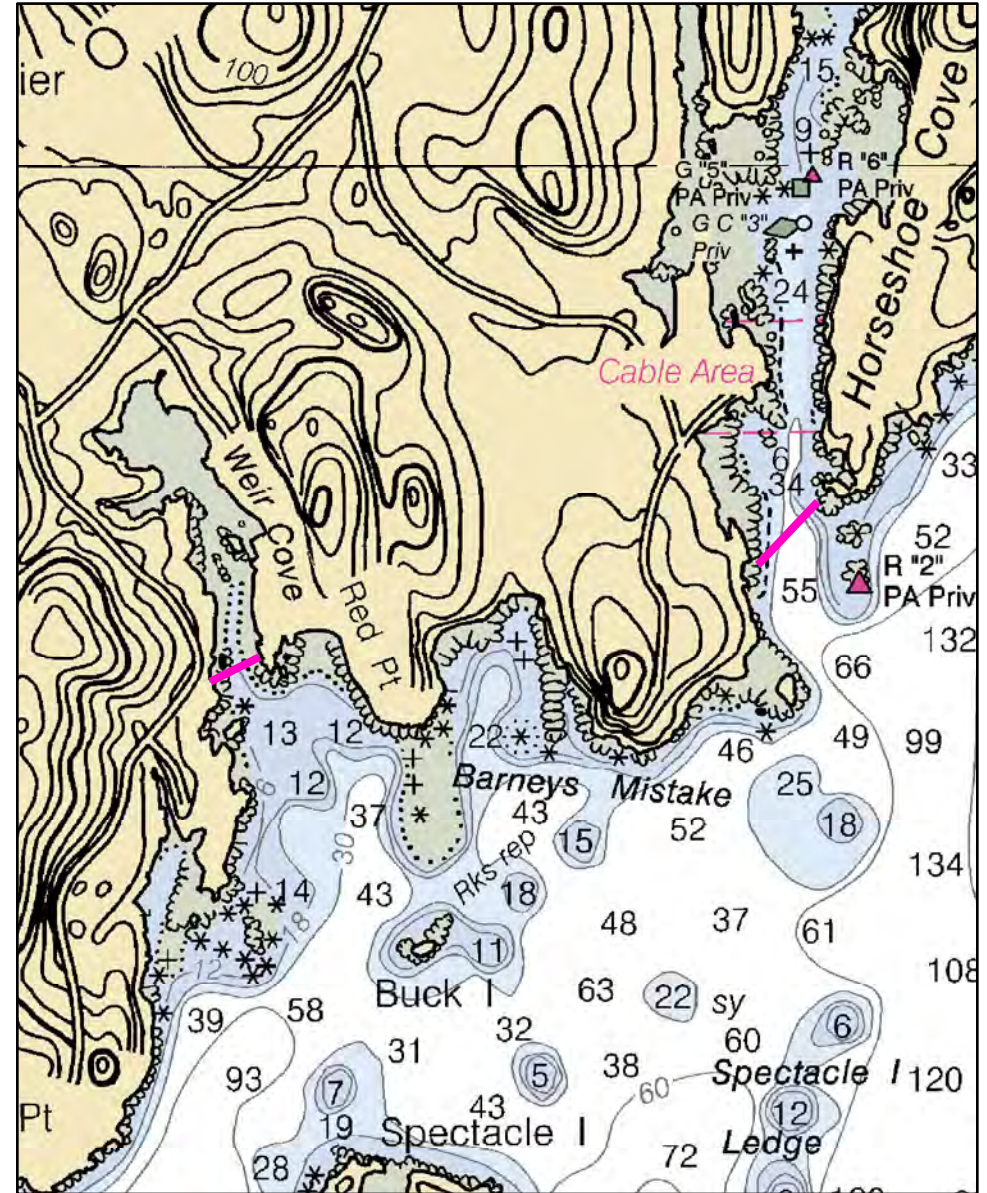
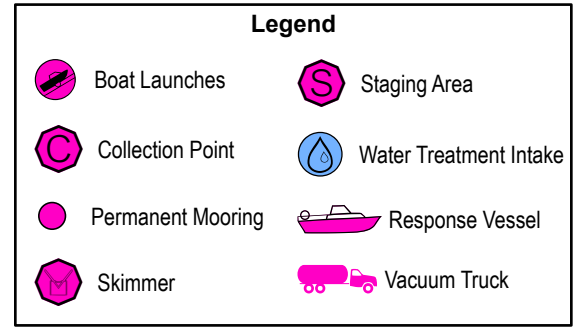
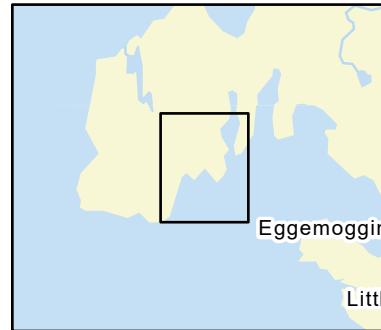


C-22-1

Weir Cove / Horseshoe Cove Brooksville, ME



Date printed: 9/10/2022 7:52 PM



C-22-1 Weir Cove / Horseshoe Cove

Town	Brooksville	Port Region	Penobscot Bay
Latitude	44° 19.037' N	Longitude	68° 46.354' W
Approx. Tidal Range (feet)	9	NOAA Chart #	13309_1
Max Current (knots)	Flood < 1 knot	ESI Map #	23C
Source	estimated	EVI Map #	58
		DeLorme Map # (2019)	15 C2

Resources At Risk

ESI Primary Shoreline Type Mixed sand and gravel beaches (5)
ESI Secondary Shoreline Type Exposed wave-cut platforms in bedrock, mud, or clay (2A)

Environmental Concerns Shellfish and marine worm habitat in upper reaches of both coves. Eelgrass and salt marsh in upper Horseshoe Cove

Archaeological Conflicts None noted. Contact MHPC at (207) 287-2132 if archaeological items are discovered.

Strategy Information

Strategy Purpose To exclude oil from upper reaches of Weir and Horseshoe Coves

Staging Areas Betsy's Cove Town Landing, Brooksville

Site Access By water

Nearest Boat Ramp Small ramp with limited parking at Betsy's Cove Town Landing at Buck Harbor in Brooksville. Nearest street address: 757 Coastal Road, Brooksville (off Rte. 176) Nearest large boat ramp is Castine Town Dock.

Collection Points Primary strategy is exclusion.

Special Instructions Both coves have residences with fields adjacent to the water, but shoreline and nearshore are rocky. Horseshoe Cove uses one length of boom, as mid-point is deep for anchoring.

Work Assignment Place 450 feet of boom across mouth of Weir Cove and 750 feet of boom across mouth of Horseshoe Cove. Horseshoe Cove is the larger priority.

Recommended Equipment / Resources

Length of Boom (feet)	1500	Type of Boom	12" - 18" containment boom
Recommended Equipment (Minimum)	4 - anchor systems: 35 lb. Danforth or equivalent and line for 3:1 scope plus tag line with buoys, or 4 - shoreside connections. 2 - workboats with minimum 90 hp 2 - boat operators 4 - laborers		

Unless otherwise indicated, the boom length given is the distance measured on the chart. Actual length required may vary with conditions.

Last Desktop Validation: 1/4/2019

Last Field Visit

Last Field Test: