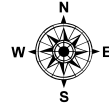
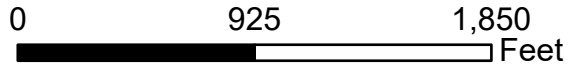
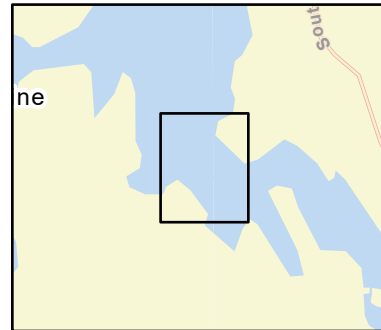


# C-21-1

## Upper Bagaduce River Penobscot / Brooksville, ME

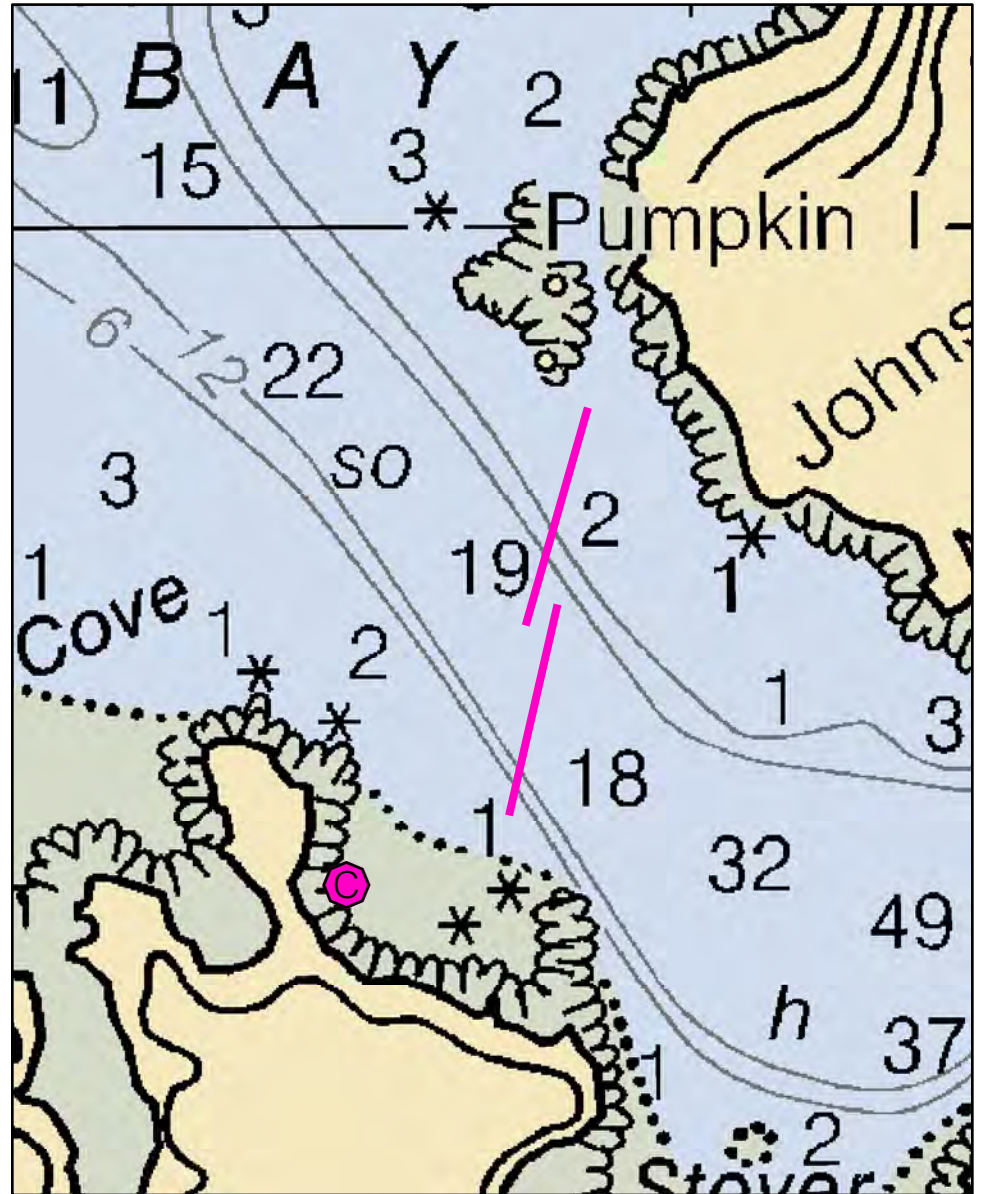


Date printed: 9/10/2022 7:52 PM



### Legend

Boat Launches	Staging Area
Collection Point	Water Treatment Intake
Permanent Mooring	Response Vessel
Skimmer	Vacuum Truck



# C-21-1 Upper Bagaduce River

**Town** Penobscot / Brooksville

**Port Region** Penobscot Bay

**Latitude** 44° 24.661' N **Longitude** 68° 43.4' W

**NOAA Chart #** 13309\_1

**Approx. Tidal Range (feet)** 12

**ESI Map #** 23A, 23C

**Max Current (knots)** Flood Ebb

**EVI Map #** 65

**Source** **DeLorme Map # (2019)** 15 B3

## Resources At Risk

**ESI Primary Shoreline Type** Mixed sand and gravel beaches (5)

**ESI Secondary Shoreline Type** Exposed wave-cut platforms in bedrock, mud, or clay (2A)

**Environmental Concerns** Tidal flats, eelgrass, shorebird habitat. Bald eagles nest near site.

**Archaeological Conflicts** None noted. Contact MHPC at (207) 287-2132 if archaeological items are discovered.

## Strategy Information

**Strategy Purpose** To exclude oil from Upper Bagaduce River

**Staging Areas** Castine Town Dock or Maine Maritime Academy.

**Site Access** Access causeway (private?) from Coastal Road (Rte. 175) in North Brooksville.

**Nearest Boat Ramp** Castine Town Dock or South Penobscot (part-tide only)

**Collection Points** Possible, but difficult collection from causeway in North Brooksville.

**Special Instructions** Difficult access

**Work Assignment** Secondary strategy for Bagaduce River. Use two 750 foot lengths of boom to divert oil from upper Bagaduce River to causeway west of Stover Cove

## Recommended Equipment / Resources

**Length of Boom (feet)** 1500 **Type of Boom** 12" - 18" containment boom

**Recommended Equipment (Minimum)**  
4 - anchor systems: 35 lb. Danforth or equivalent and line for 3:1 scope plus tag line with buoys.  
2 - shoreside connections.  
1 - vacuum truck or skimmer and storage  
2 - workboats with minimum 90 hp  
2 - boat operators  
4 - laborers

Unless otherwise indicated, the boom length given is the distance measured on the chart. Actual length required may vary with conditions.

Last Desktop Validation: 1/5/2012

Last Field Visit: 7/15/2011

Last Field Test: