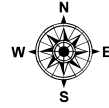
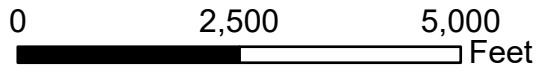


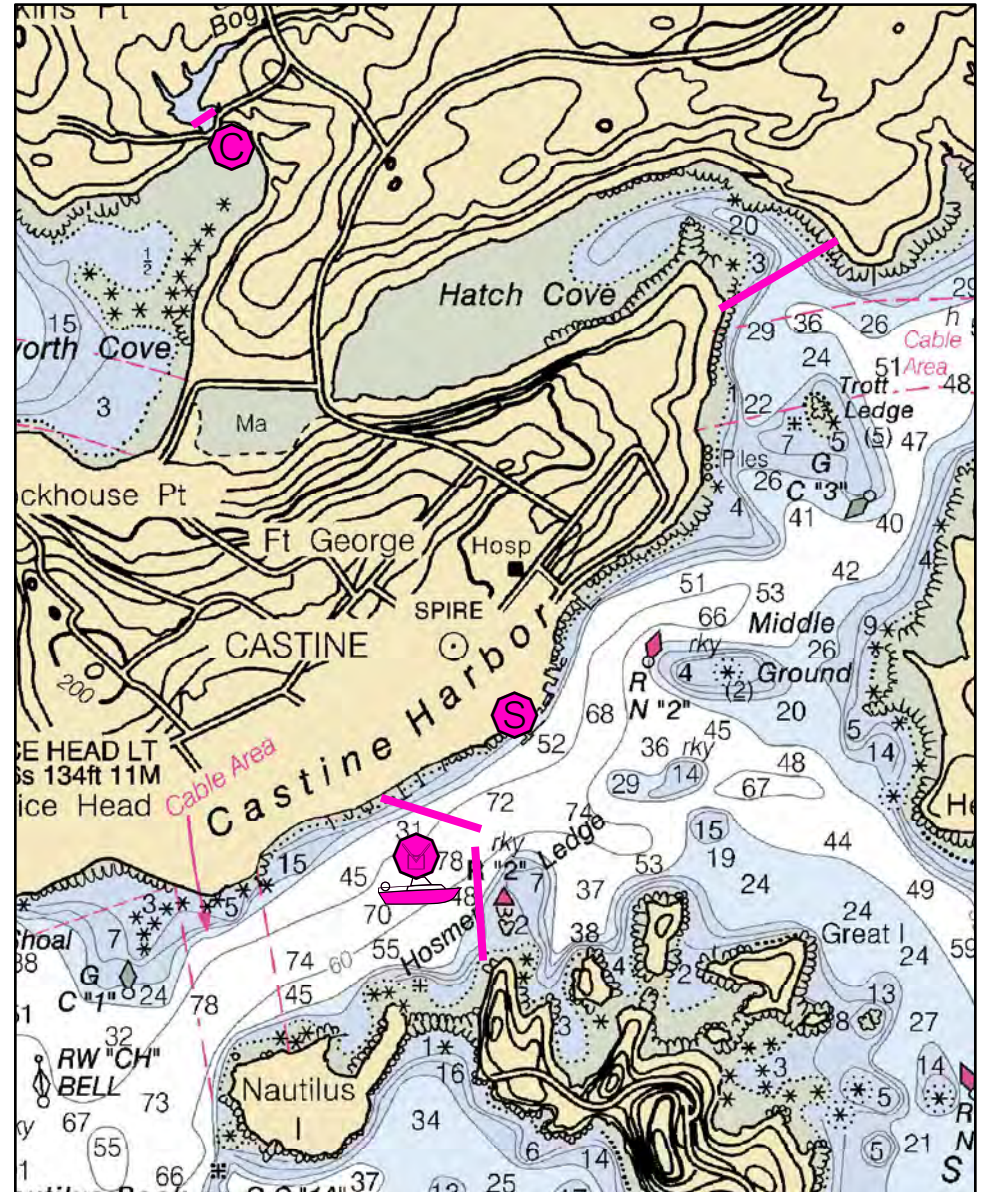
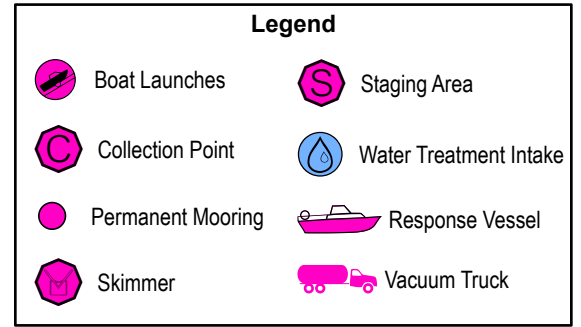
C-15-1

Castine Harbor / Wadsworth & Hatch Coves

Castine, ME



Date printed: 9/11/2022 7:23 PM



C-15-1 Castine Harbor / Wadsworth & Hatch Coves

Town	Castine	Port Region	Penobscot Bay
Latitude	44° 24.464' N	Longitude	68° 47.275' W
Approx. Tidal Range (feet)	10	NOAA Chart #	13309_1
Max Current (knots)	Flood 1.9	ESI Map #	23C, 23D, 23B, 23A
	Ebb	EVI Map #	58, 65, 48, 64
Source	NOAA estimate	DeLorme Map # (2019)	15 B2

Resources At Risk

ESI Primary Shoreline Type	Mixed sand and gravel beaches (5)
ESI Secondary Shoreline Type	Coarse grained sand beach (4)

Environmental Concerns Castine harbor, islands and upper Bagaduce River have bald eagle nesting areas, seal haul-outs, shellfish beds and marine worm habitat. Area is a designated Focus Area by Maine Natural Areas Program. Wadsworth Cove: Salt marsh at upper end. Eelgrass, shellfish beds and shorebird habitat. Hatch Cove: Shellfish beds, marine worm and shorebird habitat.

Archaeological Conflicts Castine - maintain shore anchors in developed areas or utilize boulder anchors, avoid other disturbances. Hatch Cove/Mayo Pt. - old breastwork presents underwater hazard at high tide; visible at low. Deviations from GRS design will require MHPC review. Contact MHPC at (207) 287-2132.

Strategy Information

Strategy Purpose	Primary strategy is to prevent oil from entering upper Bagaduce River. Secondary strategies exclude oil from Hatch Cove and divert oil in Wadsworth Cove
Staging Areas	Castine Town Dock or Maine Maritime Academy
Site Access	Wadsworth Cove: Mill Lane off 166A, Back Shore Rd off 166. Castine Harbor and Hatch Cove: Castine waterfront
Nearest Boat Ramp	Castine Town Dock
Collection Points	Castine Harbor by skimmer. Can collect from Mill Lane site for Wadsworth Cove. No collection for Hatch Cove (exclusion)
Special Instructions	Current information is for main channel of river. Note cable areas on chart.
Work Assignment	Castine harbor: designed to use DEP barge and skimming system. Deploy 1,000 feet of harbor boom from Castine mainland to barge deployed in channel. Deploy 1,200 feet of harbor boom from barge to Cape Rosier. Channel depth precludes anchoring in sections, so utilize as much boom as possible in the main part of the channel. Recover oil with skimmer. With maximum flood current, angle of boom to current must be less than 22°. Wadsworth Cove: Seal brook at small wooden bridge on Mill Lane off Rte. 166A using 200 feet of harbor boom. Hatch Cove: Deploy 1200 feet of containment boom across mouth of cove. Avoid going to far back into cove in order to avoid underwater hazards and shallow flats.

Recommended Equipment / Resources

Length of Boom (feet)	3800 (see notes)	Type of Boom	12" to 18" containment boom
Recommended Equipment (Minimum)	DEP barge Netepenawesit 2 - anchor systems: 35 lb. Danforth or equivalent and line for 3:1 scope plus tag line with buoys. 6 - shoreside connections. 1 - vacuum truck or skimmer and storage 2 - workboats with minimum 90 hp 2 - boat operators 4 - laborers		

Unless otherwise indicated, the boom length given is the distance measured on the chart. Actual length required may vary with conditions.

Last Desktop Validation: 9/27/2018

Last Field Visit: 7/14/2011

Last Field Test: