

EPA Kennebec River Geographic Response Strategy

Waterville KR-ME-02

Tactics Legend



Deflection Booming



Diversion Booming



Exclusion Booming



Free Oil Recovery



Passive Recovery



Shoreside Recovery



Staging Area



Boat Ramp



Kayak Ramp



Railroad



Protected-Water Boom



Protected-Water Boom (Ebb Tide)



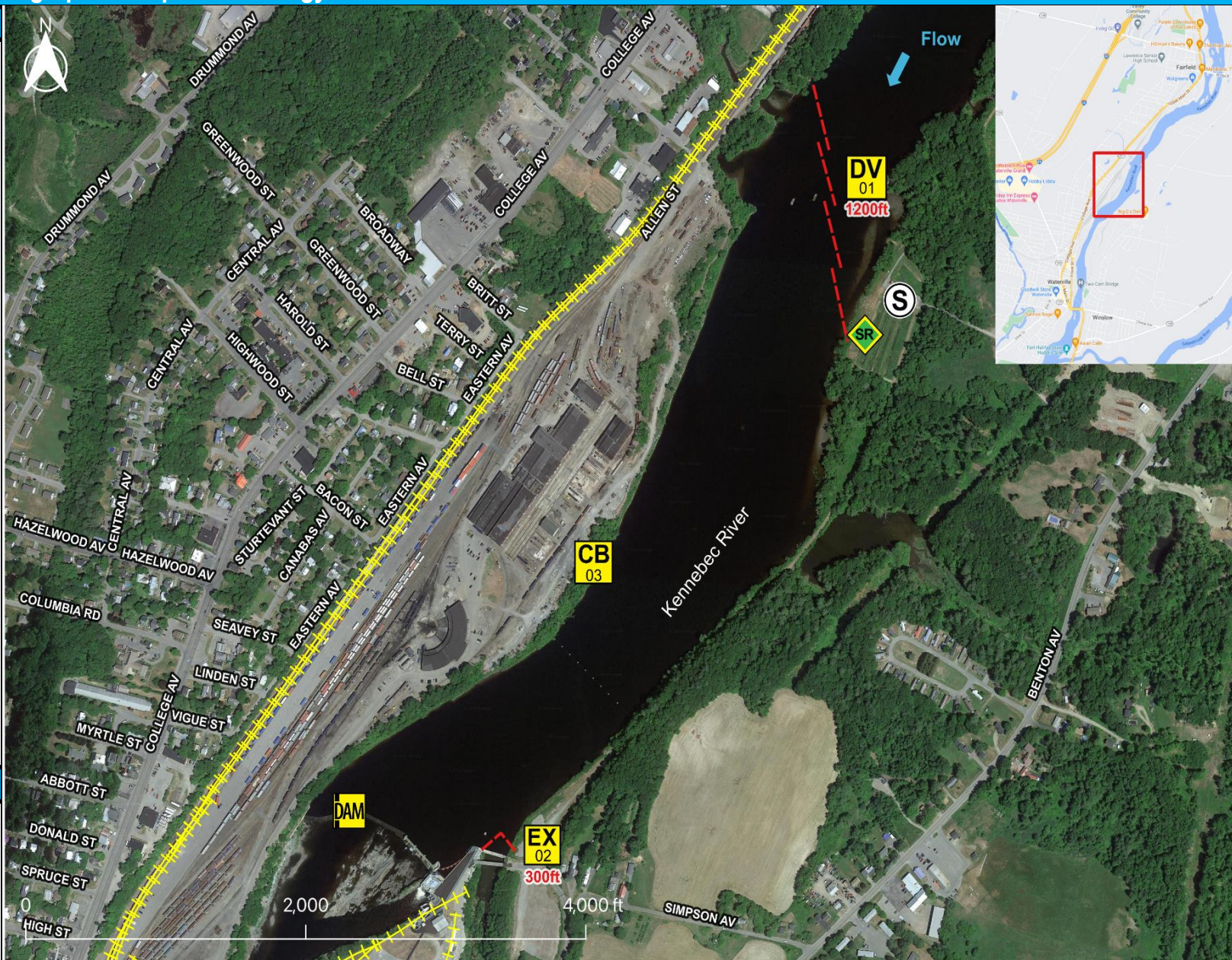
Snare/ Sorbent Boom

Equipment - All Tactics

Boom(ft)	1500
Marine anchors	7
Shore anchors	4
Sorbent Boom(ft)	0
FO Recovery Sys	0
Shore Responders	4
Boat Responders	2
Boats	2

Version

9/20/2022



Tactics Deployment, Responder Safety, and GRS Data Information

Always consider on-scene conditions before deploying GRS tactics. Responder safety should always be the first priority.

Location





Latitude: 44° 34' 15"

Longitude: 69° 36' 43"

State Maine

EPA Kennebec River Geographic Response Strategy

Waterville KR-ME-02

Tactic #	Purpose	Response Equipment	Deployment Resources	Deployment Notes
DV-01 	Redirect spilled oil from one location or direction of travel to a specific site for recovery.	1200 ft protected water boom 6 marine anchor system 2 shoreline anchor system	4 shore responders 2 response boats 2 boat operators	Deploy boom as depicted to divert incoming oil to the collection site. Anchor every 200-300'. Adjust configuration as necessary to reduce entrainment. Set up shoreside recovery. Deploy shoreside anchor first.
		N/A Testing Date	N Tested	
SR-01 	Remove spilled oil that has been diverted to a designated recovery site accessible from shore.	1 skimming system 1 storage tank or bladder 1 hoses, pumps, fittings	2 shore responders	Set up shoreside recovery tactic at general location depicted on map.
		N/A Testing Date	Tested	
EX-02 	Prohibit oil slicks from entering a sensitive area.	300 ft protected water boom 1 marine anchor system 2 shoreline anchor system	2 shore responders 1 response boats 1 boat operators	Deploy boom as depicted to exclude oil from sensitive areas. Anchor every 200-300'. Adjust configuration as necessary to reduce entrainment. Deploy shoreside anchor first. Readjust boom angle as needed to reduce entrainment
		N/A Testing Date	N Tested	
CB-03 	Prevent oil that has entered drainage systems from impacting waterways and sensitive areas.	1 inflatable plug, sand bag, or plywood	2 shore responders	If accessible deploy appropriate size inflatable culvert plug in the culvert. Monitor to ensure blocking integrity. Without culvert plug, place plywood or similar sheeting material across the culvert. Use plastic sheeting to ensure the seal. Stack sandbags against plywood to counter outflow pressure.
		N/A Testing Date	Tested	

EPA Kennebec River Geographic Response Strategy
Waterville KR-ME-02
Local contacts

Waterville Fire Department	207-680-4735
Waterville Emergency Management	978-250-5280
Waterville Water/Sewer Department	207-475-5353
Pan Am Railways	207-873-6921
Brookfield Energy	508-251-7747 (24 hr)
Maine DEP (Oil Spill)	800-482-0777
Maine DEP (HazMat Spill)	800-452-4664
ME Dept of Inland Fisheries & Wildlife(Augusta)	800-452-4664
Maine Dept. of Marine Resources	207-941-4449
Maine Drinking Water Program	207-557-4214
Maine Historic Preservation Commission	207-287-2132
National Response Center	800-424-8802



Existing boom positioned at dam intake on east side of river near location of EX-02.



Access road to Kennebec/Messalonskee Trails parking area north of the Waterville Dam.

Resources Protected

Fish	Atlantic Salmon, Wild Brook Trout
Birds	No available data
Threat/End. Species	Threatened Species Habitat, Rare Plants
Cultural/Historical Resources	Historical/Archaeological Sites
Human Use	Boat Ramp, Infrastructure, Lock & Dam, Park
Land Management	No available data
Riverine	Sand & Gravel Aquifers, Wetlands, Man-Made Structures

Navigational Hazards

Exercise caution when operating close to dam.

Lake and river conditions such as flow rate and flood stage vary depending on the time of year and heavy rain or snowfall.

If ice is present GRS tactics and strategies must be reevaluated.

Special Considerations

Survey site prior to deployment and modify deployment tactics and techniques as appropriate based on observed river conditions.