

# **Inland Response Tactics Manual**

**General tactics to be applied during initial  
response to a spill of oil on fast water**

**Prepared for**



**Environmental Protection Agency Region 5  
Emergency Response Branch  
77 West Jackson Boulevard (SE-5J)  
Chicago, Illinois 60604**

**by the**



**Upper Mississippi River Basin Association  
415 Hamm Building  
408 Saint Peter Street  
Saint Paul, MN 55102**

## Contents

1. DIVERSION (FOR CONTAINMENT AND COLLECTION) .....	1
Booming in a Stream.....	1
Booming in Open Water .....	3
2. EXCLUSION .....	4
Booming on a River .....	4
Booming at a Culvert .....	6
Booming in Open Water .....	7
3. CONTAINMENT AND COLLECTION .....	8
Containment in Open Water.....	8
Land Barriers.....	9
Containment with Underflow Dams .....	11
Containment on Ice with Trenches and Sumps .....	13
Flooding and Flushing the Shoreline .....	15
Collection By Direct Suction .....	17
Collection from Pit or Trench .....	19
Collection with Portable Skimmers and Pumps.....	20
Collection with Sorbents .....	22
Containment with Gate Weir .....	24
Collection Under Ice .....	25
4. OTHER TACTICS .....	26
Burning With Heli-Torch and Other Igniters.....	26
Burning Oily Vegetation .....	28
Air Sparging.....	29
5. CALCULATING PROPER DEPLOYMENT OF BOOM .....	30
Maximum boom deployment angles to prevent entrainment.....	30

## 1. DIVERSION (FOR CONTAINMENT AND COLLECTION)

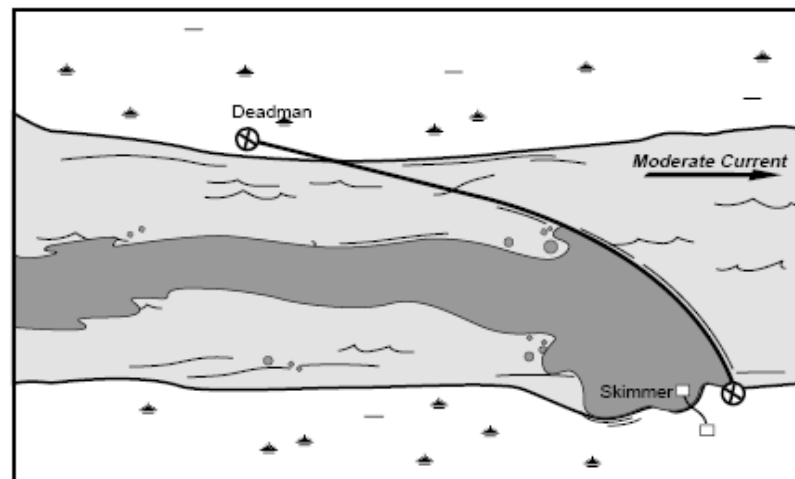
### Booming in a Stream

The objective of stream booming is to remove oil from the fastest water and divert it to slower water. A stream can be boomed by deploying the boom either upstream or downstream. In either case, the boom is first set out on the stream bank. Before the boom is deployed, rig anchor points on the boom. The boom is attached to a shore anchor, and then the boom is either towed upstream to a midstream anchor point, or the boom is allowed to drift downstream with the current. Once the boom is set, intermediate anchors are set as needed to ensure that the boom maintains the proper configuration (remembering that the current perpendicular to the boom should not exceed  $\frac{3}{4}$  knot). Examples of deployment configurations follow.

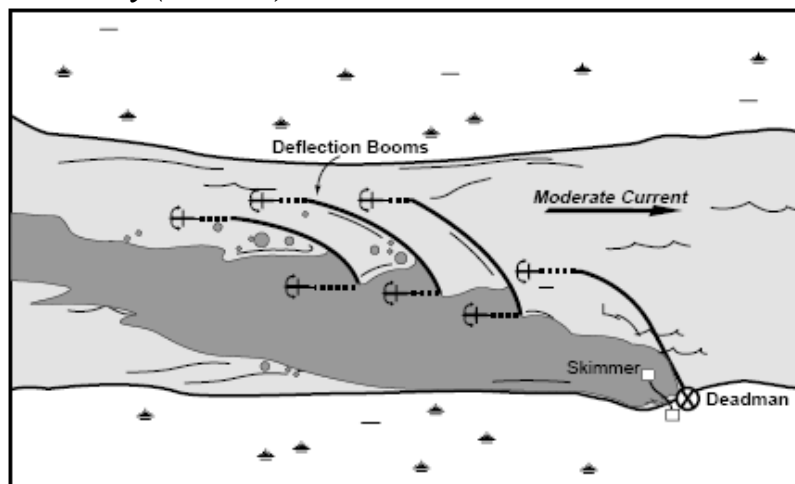
***Diversionary (single boom):*** A boom is deployed from one bank at an angle to the current and anchored midstream or on the opposite bank for diverting the oil to an eddy or other quiet-water collection point on the shoreline. Alternatively, a single long boom can be used in a multichannel stream to divert oil so that it stays in one channel.

***Diversionary (cascade):*** Several booms are deployed in a cascade fashion when a single boom can't be used because of a fast current or because it's necessary to leave openings for boats to get through. This configuration can be used in strong currents where it is impossible or difficult to deploy one long boom. Shorter sections of boom used in a cascade deployment are easier to handle in fast water. However, more equipment is needed than when a single boom is used.

***Deflection /Diversionary (Single Boom)***



***Diversionary (Cascade)***



**Deployment Considerations and Limitations**

- 8x6 Delta boom is most commonly used for this tactic
- Since the speed of the current perpendicular to the boom must be maintained at ¾ kt or less, the length of boom needed to stretch across a stream depends on the current. For a stream 100ft across with a 1kt current, a boom approximately 140 ft long is needed. If the current is 2kt, the same stream would require 320 ft of boom. The speed of the current is not equal across the stream; the fastest water is with the deepest water. Oil moving in a stream will be entrained in the fastest water.
- The shortest length of boom available is 50 ft.
- Readjust angles and widths between boom sections as current and wind change. Constantly monitor nearshore boom systems to prevent escape of oil.

**Equipment and Personnel**

EQUIPMENT	FUNCTION	PIECES	NO. STAFF/SHIFT	MOBE TIME	DEPLOY TIME
Boom	Deflection Booming	≥50 ft	6 For Setup 3 To Maintain	1 hr	3 hr
Work Boat	Booming Support	2		1 hr	
Anchor System	Anchoring Boom	Variable		1 hr	

**Support**

EQUIPMENT	FUNCTION	PIECES	NO. STAFF/SHIFT	MOBE TIME	DEPLOY TIME
Avgas Trailer	Boat Fuel	1	1(initial)	1hr	0.5 hr
Mechanic Truck	Support Equipment	1	1	1hr	0.5 hr

**NOTE:** “Mobe Time” is time to get it out of storage, prepare it for operation, and make it ready to travel (concurrent for all equipment); “Deploy Time” is time to make it operational for its intended use at the spill site. These times do not include travel time from base to spill site, which may have multiple components.

**Boom Angle**

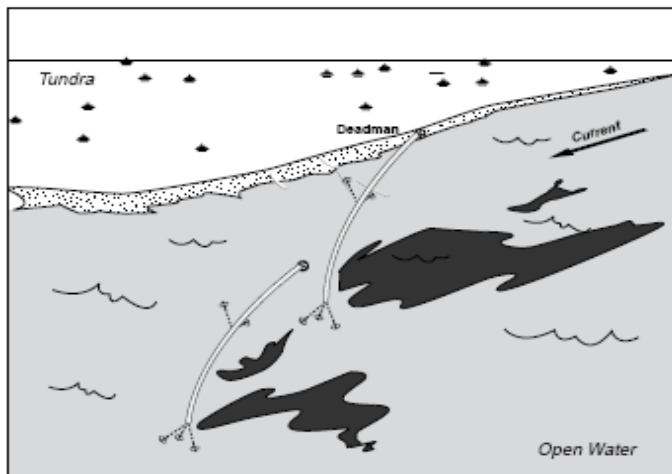
CURRENT (KNOTS)	CURRENT (FT/SECOND)	BOOM ANGLE RELATIVE TO CURRENT REQUIRED TO KEEP COMPONENT OF CURRENT <3/4 KNOT
1.5	2.5	30° to 42°
1.75	2.9	25° to 35°
2.0	3.4	22° to 30°
2.25	3.8	19° to 26°
2.5	4.2	17° to 24°
2.75	4.6	16° to 21°
3.0	5.0	15° to 19°

### **Booming in Open Water**

Deflection booming is often used where the water current is greater than 1 knot or where exclusion boom does not protect the shoreline. Deflection booming diverts oil to locations that are less sensitive or more suitable for recovery.

Boom is anchored at one end at the shoreline, while the free end is held at an angle by an anchor system. Deflection boom is deployed at an angle to the current to reduce and divert surface flow. This allows the oil to move along the boom and eliminates vortexes and entrainment. Anchoring is usually placed every 50 feet depending on the current. Anchoring distance will vary depending on current.

Cascading deflection boom involves two or more lengths of boom ranging from 100 feet to 500 feet placed in a cascading formation in the water. The lead boom deflects the slick, and subsequent booms placed downstream of the lead boom continue the deflection process until the slick is directed to the desired area.



### ***Deployment Considerations and Limitations***

- The optimum angle of boom deployment depends on the current speed and the length and type of boom. The angle is smaller in strong currents than in weak currents and decreases as boom length increases. The more stable the boom is, the larger the optimum deployment angle is for a given current speed. Because deflection booms significantly reduce surface current, successive booms are deployed at increasingly larger angles.
- Don't assume 100% containment with one boom system
- Readjust angles and widths between boom sections as current and wind change. Constantly monitor nearshore boom systems to prevent escape of oil

### ***Equipment and Personnel***

EQUIPMENT	FUNCTION	PIECES	NO. STAFF/SHIFT	MOBE TIME	DEPLOY TIME
Work Boat	Deploy Boom	2	6	1 hr	3 hr
Boom	Deflection	Variable		1 hr	
Anchor System	Anchor Boom	Variable	2	1 hr	
Onshore Anchors	Anchor Boom	Variable	-	1 hr	

### ***Support***

EQUIPMENT	FUNCTION	PIECES	NO. STAFF/SHIFT	MOBE TIME	DEPLOY TIME
Avgas Trailer	Airboat Fuel	1	1(initial)	1hr	0.5 hr

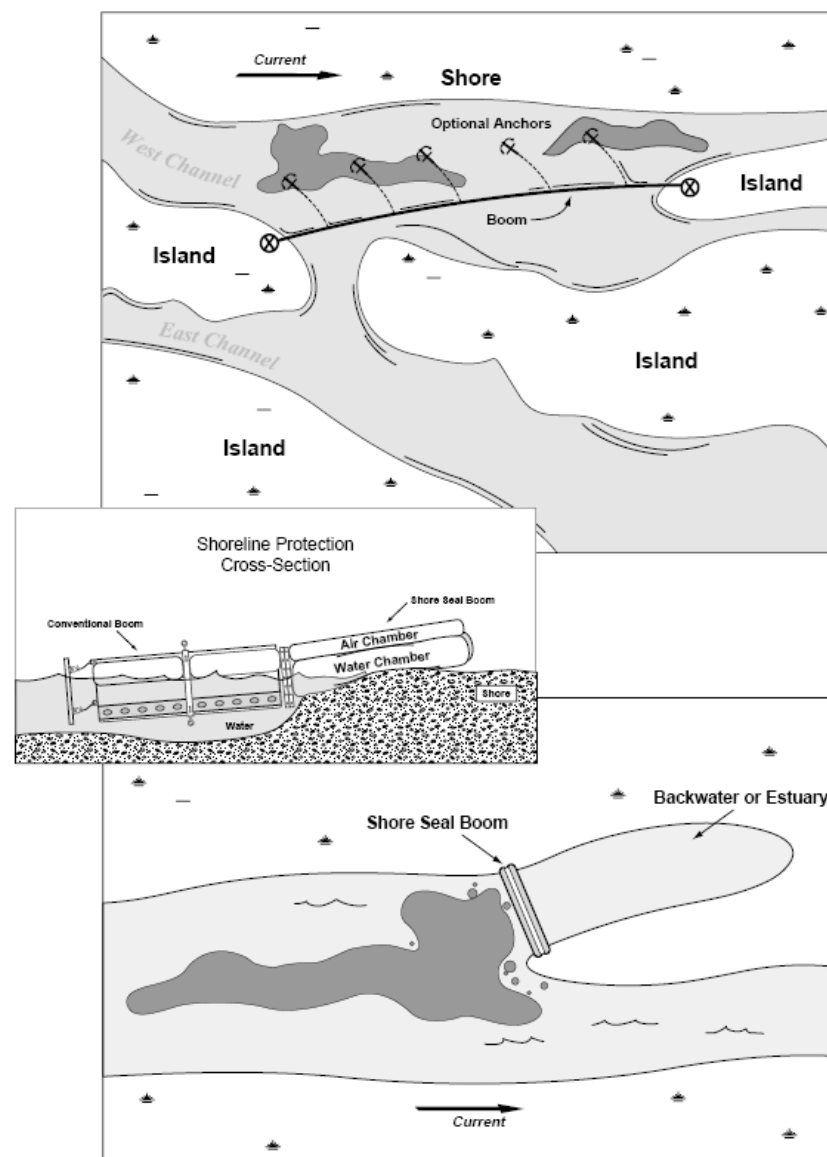
## 2. EXCLUSION

### Booming on a River

Either conventional boom or a Shore Seal boom can be used to exclude oil from a sensitive area. For example, the Shore Seal boom can be used in shallow water to boom off a back-water, or a conventional boom can be placed across the mouth of a side channel to keep oil out. In addition, Shore Seal boom can be connected to conventional boom to protect the shoreline.

#### *Deployment Considerations and Limitations*

- 8x6 Delta boom is most commonly used for this tactic.
- Since the speed of the current perpendicular to the boom must be maintained at  $\frac{3}{4}$  kt or less, the length of boom needed to stretch across a stream depends on the current. For a stream 100ft across with a 1kt current, a boom approximately 140 ft long is needed. If the current is 2kt, the same stream would require 320 ft of boom
- The speed of the current is not equal across the stream; the fastest water is with the deepest water. Oil moving in a stream will be entrained in the fastest water
- Don't assume 100% containment with one boom system
- Readjust angles and widths between boom sections as current and wind change. Constantly monitor nearshore boom systems to prevent escape of oil



***Equipment and Personnel***

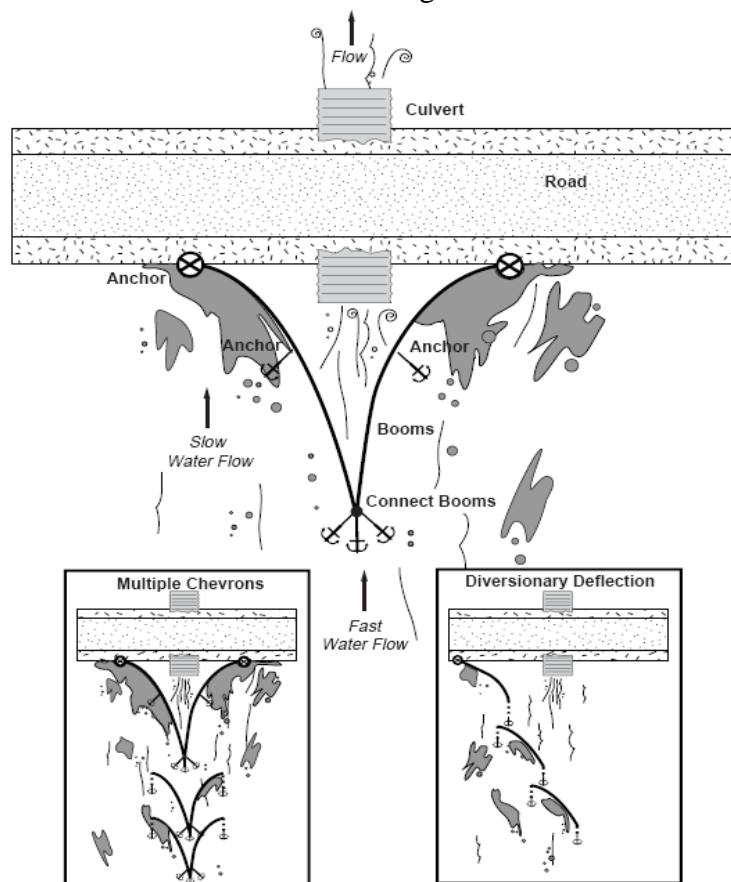
EQUIPMENT	FUNCTION	PIECES	NO. STAFF/SHIFT	MOBE TIME	DEPLOY TIME
Boom	Exclusion Booming	≥50 ft	3	1 hr	3 hr
Shore Seal Boom	Exclusion Booming	≥50 ft	4	1 hr	1.5 hr
Work Boat	Booming Support	1		1 hr	3 hr
Floating Pump & Blower	Shore Seal Inflation	1		1 hr	1.5 hr
Anchor System	Anchoring Boom	Variable	2	1 hr	3 hr

***Support***

EQUIPMENT	FUNCTION	PIECES	NO. STAFF/SHIFT	MOBE TIME	DEPLOY TIME
Avgas Trailer	Boat Fuel	1	1(initial)	1hr	0.5 hr
Mechanic Truck	Support Equipment	1	1	1hr	0.5 hr

### Booming at a Culvert

In many spill response situations it may be necessary to prevent the oil from flowing into a culvert. Blocking the culvert introduces the risk of washing out the feature that is above the culvert, in most cases a road. Under these circumstances boom should be deployed in either a multiple chevron or a diversionary deflection configuration. This will deflect the oil from the mouth of the culvert and cause it to collect along the road.



### *Deployment Considerations and Limitations*

- 8x6 Delta boom is most commonly used for this tactic
- The speed of the current perpendicular to the boom must be maintained at ¾ knot or less to prevent oil loss.
- The number and configuration of booms depend on flow rate and number of collection sites. With any boom system do not assume 100% containment with one system.
- An assortment of skimmers can be used alongside the roadway. When selecting a skimmer, consideration must be given to oil viscosity, available capacity, and volume of oil to be recovered.

### *Equipment and Personnel*

EQUIPMENT	FUNCTION	PIECES	NO. STAFF/SHIFT	MOBE TIME	DEPLOY TIME
Work Boat	Containment	2	6	1 hr	3 hr
Ropes and Pulleys	Boom Positioning	Variable			
Boom	Deflection Booming	≥50 ft			
Anchor System	Anchor Booming	≥2	3	1 hr	

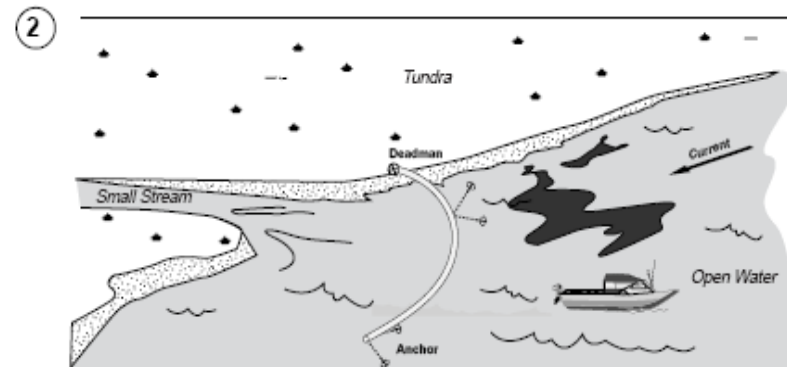
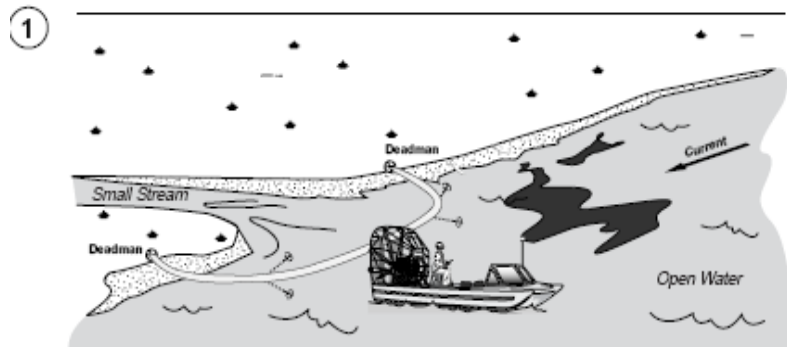
### *Support*

EQUIPMENT	FUNCTION	PIECES	NO. STAFF/SHIFT	MOBE TIME	DEPLOY TIME
Bed Truck	Transport Equipment	1	1	1hr	0
Avgas Trailer	Airboat Fuel	1	1(initial)	1hr	0.5 hr



**Booming in Open Water**

Boom is placed across small inlets and creek mouths identified as sensitive areas. Exclusion booming is used where currents are less than ¾ knot and breaking waves are less than .5 foot in height. The boom is either (1) anchored from shore to shore across the mouths of streams or (2) at an angle to a shoreline to guide oil past the sensitive area. Crews with work boats deploy and tend boom along the shoreline in marshes and inlets.



**Deployment Considerations and Limitations**

- Exclusion booming is effective if the water currents are less than ¾ kt, breaking waves are less than .5 ft, and water depth is at least twice the boom depth in other than intertidal areas.
- A flexible curtain-type boom reacts more favorably to tidal level fluctuation than a rigid fence-type boom.
- Exclusion booming is most effective across small stream mouths or inlets. Other areas may be more sensitive and require protection, but ability to protect efficiently needs to be considered when determining exclusion booming areas.
- Don't assume 100% containment with one boom system
- Readjust angles and widths between boom sections as current and wind change. Constantly monitor nearshore boom systems to prevent escape of oil

**Equipment and Personnel**

EQUIPMENT	FUNCTION	PIECES	NO. STAFF/SHIFT	MOBE TIME	DEPLOY TIME
Work Boat	Deploy Boom	2	6	1 hr	3 hr
Boom	Deflection	Variable		1 hr	
Anchor System	Anchor Boom	Variable		1 hr	

**Support**

EQUIPMENT	FUNCTION	PIECES	NO. STAFF/SHIFT	MOBE TIME	DEPLOY TIME
Avgas Trailer	Airboat Fuel	1	1(initial)	1hr	0.5 hr

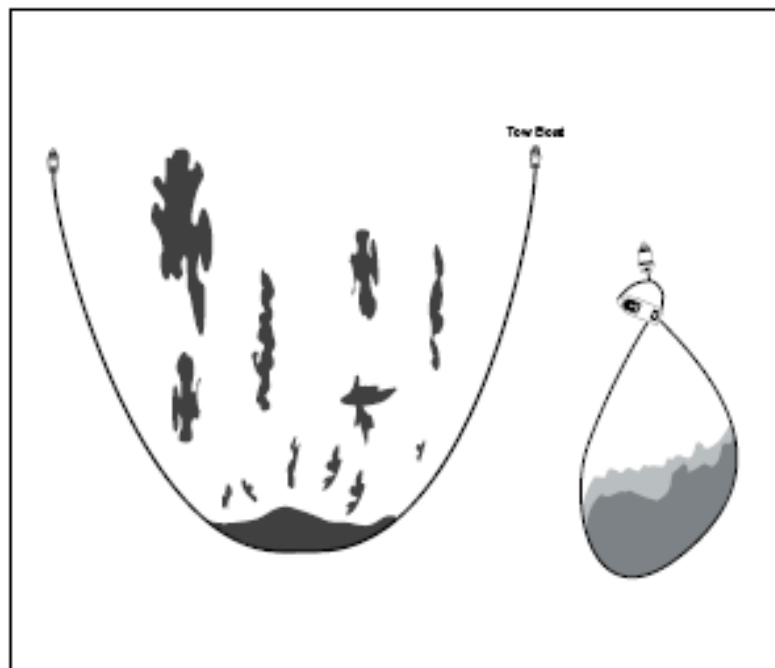
### 3. CONTAINMENT AND COLLECTION

#### Containment in Open Water

Exclusion and deflection tactics (also outlined in this appendix) are often used as part of the containment and collection strategies.

Once contained, there are a variety of recovery tactics that can then be used to recover the oil. The type of containment tactic depends highly on the location of the spill, whether in water or on land, and the environmental conditions, whether there is snow or ice present.

In larger areas of open water two boats, as shown in the illustration, can tow containment booms of up to 1000 feet. This method can be used for temporary containment and/or transport of oil.



#### *Equipment and Personnel*

EQUIPMENT	FUNCTION	PIECES	NO. STAFF/SHIFT	MOBE TIME	DEPLOY TIME
Work Boat	Tow Boom	2	6	1 hr	2 hr
Boom	Containment	Variable	-	1 hr	

## **Land Barriers**

A containment berm can be constructed of available materials such as earth, gravel, or snow. Use earth-moving equipment or manual labor to construct the berm. Form the materials into a horseshoe shape ahead of the flow of oil. Use plastic sheeting to line the walls of a soil berm to prevent oil penetration. Because of the sorbent quality of snow, it makes an excellent berm for both containment and recovery. A snow berm can be strengthened by spraying it with a fine water mist that forms an ice layer on top of the snow. Sandbags filled with sand or other heavy material also make excellent containment barriers.

Sorbent boom can be used when overland flows are relatively minor or in wetlands. The sorbent boom should be staked in place with stakes approximately 5 feet apart.

These barriers can serve to:

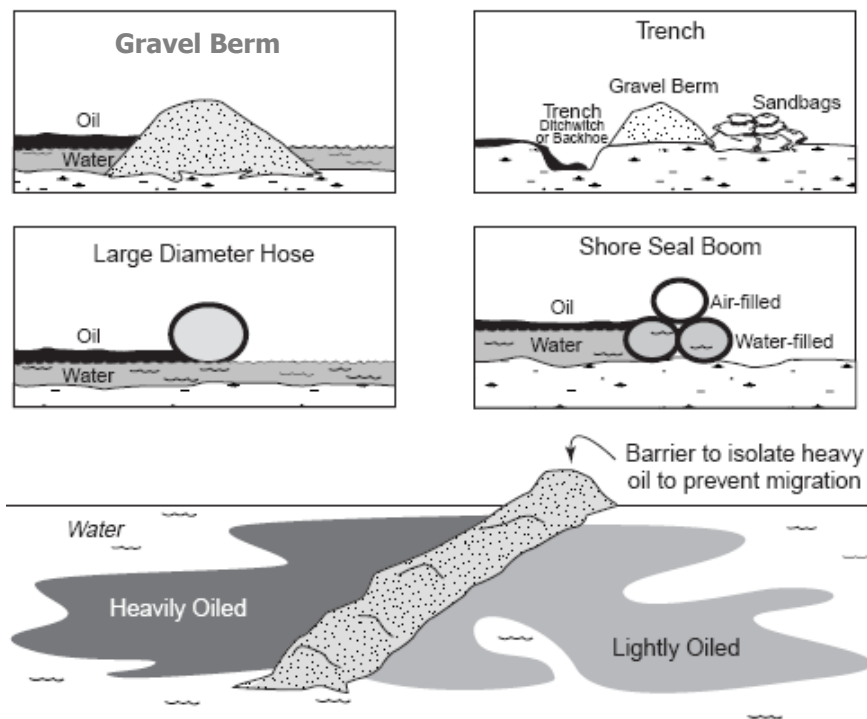
- Contain and stabilize a contaminated area
- Contain or divert oil on water or oil that has potential to migrate
- Create cells for recovery
- Block natural depressions to act as containment areas for recovery

An excavated trench or a berm can also be used to intercept the flow of a spill or divert the flow around a sensitive area. Dig the trench at right angles to the flow of the spill. The trench should be angled slightly downslope to avoid excessive pooling in the trench. Place excavated material on the downhill side of the trench. In areas with a low water table, line the sides and bottom of the trench with plastic sheeting or similar impermeable materials. If the

groundwater table is high, line the downhill side of the trench. The trench can be flooded with water to inhibit spill penetration into sediments and to stimulate flow toward the recovery device in the trench or pit.

## ***Deployment Considerations and Limitations***

- Disposal of construction material should be taken into account before using this tactic
- This tactic is appropriate for use with low flow and shallow water areas
- Do not excavate where excavation will cause more damage than the spill. The bobcat trimmer is the last option for trenching. A permit may be needed from the landowner.
- When working with equipment around or near flow lines, a spotter must be added to each front-end loader.
- A civil work permit from the operator is required for all work on owner-company pads.



**Equipment and Personnel**

EQUIPMENT	FUNCTION	PIECES	NO. STAFF/SHIFT	MOBE TIME	DEPLOY TIME
Visqueen	Containment	≥10 ft	2	1 hr	1 hr
Shore Seal Boom	Berm/Contain	≥50 ft	≥4	1 hr	1 hr
Backhoe	Trenching	1	1	2 hr	.5 hr
Bobcat w/Trimmer	Trenching	1	1	1 hr	.5 hr
Hose(5-inch)	Berm/Contain	≥1 ft	2	2 hr	1 hr
Sandbags	Berm/Contain	≥10	≥6*	2 hr	2 hr
Front End Loader w/Bucket	Build Berms	1	1	1 hr	.5 hr

\*Number of personnel depends on number of sandbags needed.

**Support**

EQUIPMENT	FUNCTION	PIECES	NO. STAFF/SHIFT	MOBE TIME	DEPLOY TIME
Semi and Trailer	Transport Backhoe	1	1 driver	1hr	0
Fuel Truck	Fuel Equipment	1	Once per shift	1hr	0.5 hr
Lube Truck	Provides fluids to heavy equipment	1	Once per shift	1hr	0.5 hr
Mechanic Truck	Support equipment	1	1	1hr	0.5 hr
Water Truck	Spray snow berm	1	2	2 hr	0.5 hr
Floating Pump and Blower	Shore Seal inflation	1	2	1hr	1 hr
Plywood	Walkway	Variable	2	2 hr	2 hr

### **Containment with Underflow Dams**

An underflow dam can be used when there is too much water flow to allow for a complete blockage of a drainage channel. The dam is built of earth, gravel, or other barriers such as sandbags or plywood sheets. Wherever possible, line the upstream side of the dam with plastic sheeting to prevent erosion and penetration of oil into the dam material.

An underflow dam can contain free floating oil and allow uncontaminated water to pass through inclined pipes in the dam. The capacity of the pipe(s) should exceed the stream flow rate. It may be necessary to use pumps to control or increase flow through the pipes.

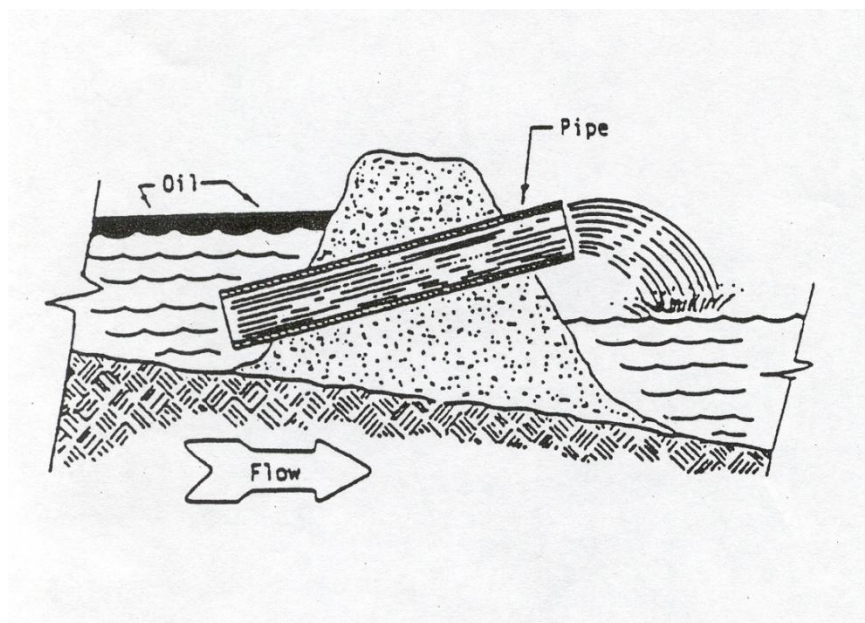
Pipes must be placed low on the upstream side of the dam, with the elevated end on the downstream side. Make sure that the upstream end of the pipe is submerged and below the oil/water interface. The height of the elevated downstream end of the pipe will determine the water level behind the dam.

Alternative methods include adding a valve on the downstream end, or a “T” on the upstream end of a level pipe. The “T” opening not only allows uncontaminated water to flow through the pipe, as with the standard design, but also gives access to responders to remove debris.

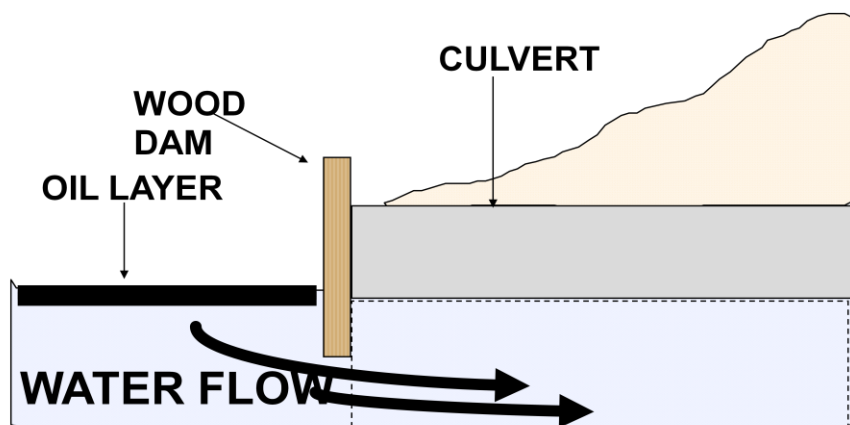
Weir dams are used to block the flow of oil through a culvert while letting uncontaminated water pass. A plywood or similar barrier is fixed to the upstream opening of the culvert. The lower edge of the plywood is below the oil/water interface and above the bottom of the culvert. Adjust size of the opening depending on flow rate.

### ***Deployment Considerations and Limitations***

- Sufficient pipe must be used to handle maximum stream flow. The number, size, length, and position of pipes vary with volume of water, velocity, width of stream, and other factors. The pipes can be plastic or steel, plain or corrugated.
- Check dams regularly for leakage and integrity. Replace eroded material as needed. Monitor oil/water interface. Changes in stream flow may require adjustment of pipes or dam height.
- The outlet of the pipe(s) must not be higher than the dam or adjacent banks, or water will back up and crest over the dam or flood past on the banks.
- Insufficient drainage through pipes will also lead to cresting. Pipes that are too level or allow excessive drainage will drop the water level enough to allow oil to pass through the dam.
- If the dam material is unlined and not wide enough or compact enough, water will saturate the dam, causing it to fail catastrophically.
- Seal the edges of a weir dam with hard-packed earth to prevent oil from seeping between plywood and culvert. Anchor the plywood in place using stakes, sandbags, or rock.



### SIDE VIEW OF A WEIR DAM



EQUIPMENT	FUNCTION	PIECES	NO. STAFF/SHIFT	MOBE TIME	DEPLOY TIME
Front End Loader	Dam construction	1	2	1 hr	2 hr
Sandbags	Dam	Quantity for fill	≥2*	2 hr	
Plywood	Liner	≥1	2	2 hr	
Pipe	Dam	≥10 ft	≥2	1 hr	
Visqueen (reinforced)	Dam	1 roll	-	1 hr	

\*Number of personnel depends on number of sandbags needed.

EQUIPMENT	FUNCTION	PIECES	NO. STAFF/SHIFT	MOBE TIME	DEPLOY TIME
Fuel Truck	Fuel Equipment	1	Once per shift	1hr	0.5 hr
Lube Truck	Provides fluids to heavy equipment	1	Once per shift	1hr	0.5 hr
Mechanic Truck	Support Equipment	1	1	1hr	0.5 hr
Semi and Trailer	Transport heavy equipment	1	1	1 hr	0.5 hr

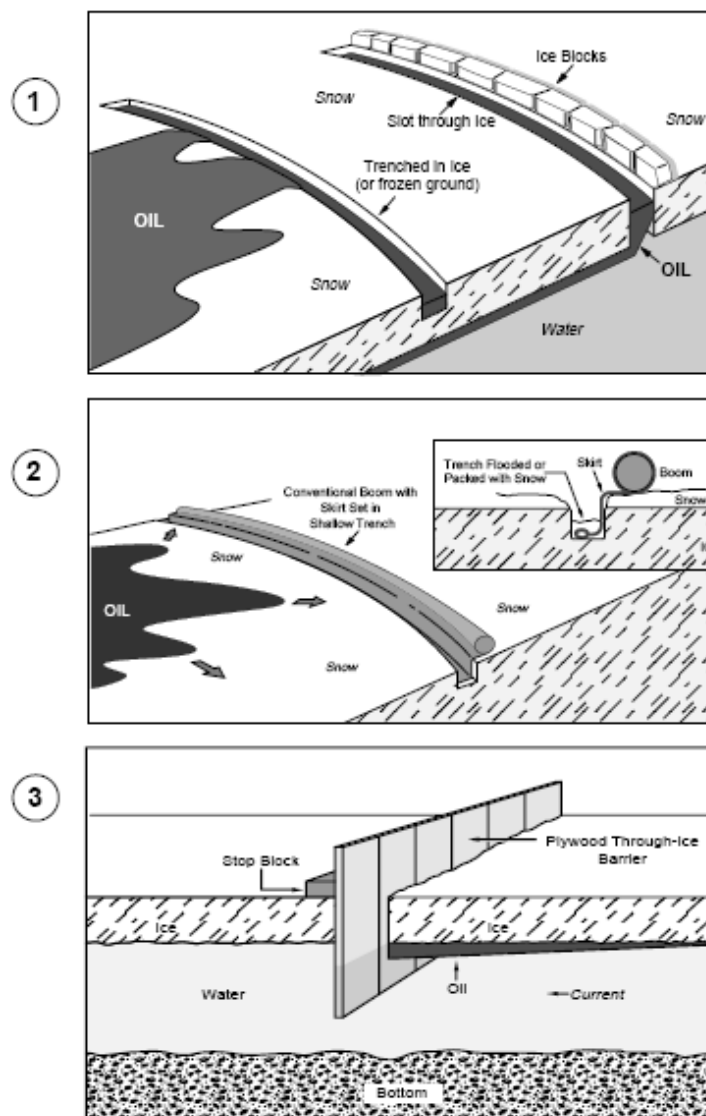
### Containment on Ice with Trenches and Sumps

Various techniques that are used on land can also be used on solid ice. (1) Partial trenches or through-ice slots can be dug in the ice surface with a Ditch Witch to encourage oil flow to a collection point. (2) The skirt of a containment boom can be set in a shallow trench to provide additional containment. (3) Another approach is to insert a plywood or metal barrier in a slot so that the barrier freezes in place. This tactic can be used to divert under-ice oil to a recovery point.

For smaller volumes of oil on ice, small snow berms can be created to contain the oil, but only where ice is thick enough and/or grounded to prevent cracking, pooling, and forced migration of oil below the ice.

#### ***Deployment Considerations and Limitations***

- Check ice thickness for safe bearing capacity before working on ice. The ice must be sufficiently strong to support personnel and heavy equipment. Also, ensure ice can withstand extra load of oil and ice on the surface without either breaking the ice or forcing oil to migrate through existing cracks. Extreme care must be taken when positioning or operating any heavy equipment close to trenches or slots in the ice. Stresses in the ice for a given load can double under these situations. Ensure that oil that accumulates in an ice trench is continually removed. If allowed to build up to a thick layer, some oil may escape the ice slot.



***Equipment and Personnel***

EQUIPMENT	FUNCTION	PIECES	NO. STAFF/SHIFT	MOBE TIME	DEPLOY TIME
Ditch Witch	Trenching	1	2	3 hr	2 hr
Visqueen	Liner	≥50 ft	-	1 hr	
Boom	Liner	≥50 ft	-	1 hr	
ATV's	Snow berm construction	2	2	1 hr	
Plywood	Through-ice barrier	>1	-	2 hr	

*\*The recovery crew will perform maintenance*

***Support***

EQUIPMENT	FUNCTION	PIECES	NO. STAFF/SHIFT	MOBE TIME	DEPLOY TIME
Fuel Truck	Fuel Equipment	1	Once per shift	1hr	0.5 hr
Lube Truck	Provides fluids to heavy equipment	1	Once per shift	1hr	0.5 hr
Mechanic Truck	Support Equipment	1	1	1hr	0.5 hr
Light Plant	Illumination	≥1	2 for initial setup, 1 to check and fuel occasionally	1 hr	0.5 hr
Tioga Heater	Equipment Support	1	1 initial setup	1hr	0.5 hr



## **Flooding and Flushing the Shoreline**

Physical removal involves a variety of washing or flushing tactics to move oil from the shore zone to a location for collection and removal. The variables that distinguish each tactic are pressure and temperature. For all these tactics, booms or other methods of trapping and containment are used to collect the oil for removal.

### **Flooding (“Deluge”)**

A high-volume (50 to 250 gpm), low-pressure supply of seawater at ambient temperature is pumped using large-diameter (3 to 6-inch) pipe and/or hose (“header”) to the upper section of the oiled area. Water can be pumped either directly from a hose without a nozzle, or the pipe or hose can be perforated (0.1 to 0.2-inch holes) at intervals and placed along the shoreline parallel to the water line. Output pressures are less than 20 psi.

The high volume of water floods the surface area (in the case of impermeable man-made shorelines) or the beach sediments. Mobile or non-sticky oil is transported with the water as it flows downslope. Flooding can be used in combination with trenches or sumps and vacuum systems to float and collect oil for recovery.

### **Low-Pressure, Cold-Water Flushing**

Hand-operated or remote-controlled hoses use ambient temperature seawater to flush, wash, and herd oil to a collection point for removal. Output pressures are controlled, usually by a nozzle, and are low (less than 50 psi). The tactic can be used with flooding to prevent redeposition of the oil.

### **Low-Pressure, Warm/Hot-Water Flushing**

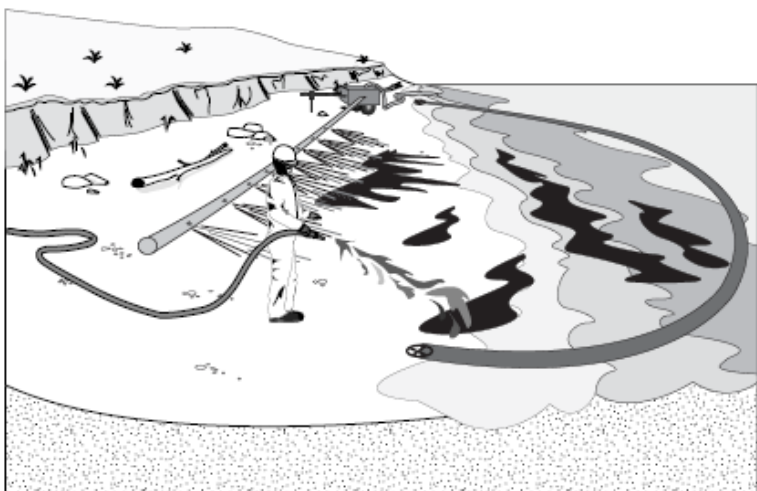
Hand-operated or remote-controlled hoses use heated (80 to 212 F) seawater to flush, wash and herd oil to a collection point. This tactic is used primarily to dislodge and flush oil that cannot be washed using low-pressure, ambient-temperature water. Output pressures are controlled, usually by a nozzle, and are low (less than 50 psi). This tactic can be used with flooding to prevent redeposition of the oil.

### **High-Pressure, Cold-Water Flushing**

Hand-operated or remote-controlled hoses use ambient temperature seawater jets to flush, wash, and herd oil to a collection point. The higher water pressures dislodge and flush oil that cannot be washed or mobilized using lower pressure, ambient temperature water. Output pressures are controlled and are in the range of 100 psi or greater. On sloping outcrops or structures this technique can be used with flooding to prevent redeposition of the oil.

### **High-Pressure, Warm/Hot-Water Flushing**

Hand-operated or remote-controlled hoses use high-pressure, heated (80 to 212 F) seawater to flush, wash and herd oil to a collection point. Output pressures may be fixed or controlled by a nozzle and are in the range of 100 psi or greater. The higher pressure and warm water dislodge and flush oil that cannot be washed by lower pressure and temperature water. On sloping structures, this technique can be used with flooding or low-pressure flushing to prevent redeposition of the oil.



**Deployment Considerations and Limitations**

- Unified Command approval is required for any shoreline cleanup tactic
- *Flooding* is effective on most shoreline types, but it may have limited application only on sand or mud flats and on steep man-made solid structures. Generally, flooding is not a very intrusive technique.
- *Low-pressure, cold water flushing* is effective on most impermeable shoreline types and on some permeable shores or marshes. It may have limited application only on sand beaches, sand-gravel beaches, or sand flats and is probably not appropriate on mud flats. Generally, this is not an intrusive technique and leaves most organisms in place.
- *Low-pressure, warm/hot water flushing* is effective on most impermeable shoreline types, but may have limited application only on sand beaches, sand-gravel beaches, and sand flats and

is probably not appropriate on mud flats. Generally, this is not a highly intrusive technique if used carefully in conjunction with high-volume flooding, which minimizes the potential adverse effects of shoreline organisms of using heated water.

- The effectiveness of flooding and low-pressure flushing decreases as oil viscosity increases and as depth of penetration increases on cobble beaches.
- *High-pressure, cold-water flushing* has limited application only for oiled bedrock or solid man-made shorelines. High-pressure water can dislodge attached organisms and may damage others.
- *High-pressure, warm/hot-water flushing* usually has only limited application for solid man-made structures. The heated water or the pressures may dislodge attached organisms or damage others.

**Equipment and Personnel**

EQUIPMENT	FUNCTION	PIECES	NO. STAFF/SHIFT	MOBE TIME	DEPLOY TIME
Trash Pump	Deluge	≥1	2	1 hr	2 hr
Suction Hose	Suction	≥20 ft	2 for setup	2 hr	
Discharge Hose	Deluge	≥50 ft	-	2 hr	
Perforated Header Hose	Deluge	≥100 ft	2 for setup	1 hr	
Water Heating Plant*	Heat Water	-	-	-	
Water Truck*	Transport Heated Water	1	1	2 hr	

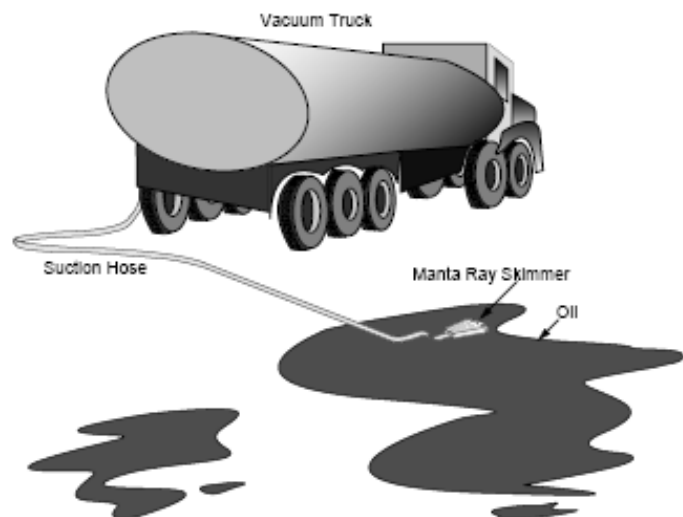
\*Warm/hot-water flushing would be used only where road access is available to truck heated water to the site.

### **Collection By Direct Suction**

For spills off pad or road, a vacuum truck can effectively reach out 200 feet. If the oil is pooled on water, a Manta Ray skimmer head is attached to the hose extending from the vacuum truck. The hose or skimmer head is placed in the pooled oil for recovery. SRT staff man the hose or skimmer head and move it to other pooled areas as necessary. A Super Sucker can also be used for direct suction

DOP pumps or 4-inch trash pumps can also be used for this task since they can move oil more than 200 feet, and could either pump the pooled oil into vacuum trucks on a pad/road, into holding tanks, or into the slop oil tank at a nearby production facility.

Free oil can be recovered from any pooled area including natural depressions, barriers, constructed trenches, or containment dikes.



### ***Deployment Considerations and Limitations***

- Vacuum trucks provide efficient spill recovery, unless vehicle access is prohibited or not possible, the spill is unpumpable (highly viscous, cold or weathered), the spill is in a thin layer, or debris will clog the recovery line.
- Identify the disposal facility to be used before calling out a vacuum truck
- Viscous liquids accessible within 200 ft by a vacuum truck are recovered with direct suction of that vacuum truck. Pooled areas could be in natural depressions or in constructed trenches.
- Vacuum trucks can access pooled diesel up to 400 ft away from the truck
- Use of Manta Ray skimmers with vacuum trucks decreases recovery capacity.
- Super Suckers are available to remove liquids with solids that vacuum trucks cannot handle.
- With a trash pump, the suction head must be completely submerged.
- Since a DOP pump is submersible, oil must be deep enough for effective pumping.
- The amount of oil will be estimated based on gauging by appropriate means (e.g., Coliwas tube). Emulsion samples will be collected and analyzed for oil content.

***Equipment and Personnel***

EQUIPMENT	FUNCTION	PIECES	NO. STAFF/SHIFT	MOBE TIME	DEPLOY TIME
Vacuum Truck	Direct Suction	1	2	1 hr	.5 hr
DOP Pump w/Power Pack	Direct Suction	1	2	1 hr	.5 hr
Trash Pump	Direct Suction	1	2	1 hr	.5 hr
Suction Hose	Transfer	≥20 ft	2 for setup	2 hr	0
Discharge Hose	Transfer	≥50 ft	-	1 hr	0
Manta Ray Skimmer Head	Direct Suction	1	- *	0.5 hr	0
Upright Tank (400 bbl)	Store Fluids	1	1 initial	2 hr	1 hr

***Support***

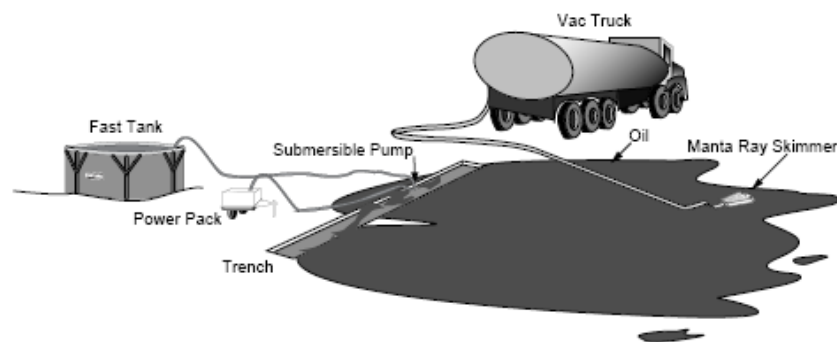
EQUIPMENT	FUNCTION	PIECES	NO. STAFF/SHIFT	MOBE TIME	DEPLOY TIME
Tioga Heater	Support heavy equipment	≥1	1 Initial Setup	1hr	0.5 hr
Fuel Truck	Fuel Heavy Equipment	1	Once per shift	1hr	0.5 hr
Mechanic Truck	Support Heavy Equipment	1	1	1hr	0.5 hr
Lube Truck	Provide Fluids to Heavy Equipment	1	Once per shift	1hr	0.5 hr
Light Plant	Illumination	≥1	2 for Initial setup and 1 to check and fuel occasionally	1hr	0.5 hr

### Collection from Pit or Trench

An excavated trench is used to intercept the flow of a spill or divert the flow around a sensitive area. Dig the trench at right angles to the flow of the spill. The trench should be angled slightly downslope to avoid excessive pooling in the trench.

Place excavated material on the downhill side of the trench. In areas with a low water table line the sides and bottom of the trench with plastic sheeting or similar impermeable materials. Where the groundwater table is high, line the downhill side of the trench.

The trench can be flooded with water to inhibit spill penetration into sediments and to stimulate flow toward the recovery device in the trench or pit.



### **Deployment Considerations and Limitations**

- Disposal of construction material should be taken into account before using this tactic
- Do not excavate an interception trench in an area where the excavation will cause more damage than the spill itself.

- On pads check for buried pipe and/or cables prior to excavation. Obtain a civil work permit from the operator.
- The amount of oil will be estimated based on gauging by appropriate means (e.g., Coliwasa tube). Emulsion samples will be collected and analyzed for oil content.

### **Equipment and Personnel**

EQUIPMENT	FUNCTION	PIECES	NO. STAFF/SHIFT	MOBE TIME	DEPLOY TIME
Vacuum Truck	Recovery	1	2	1 hr	0.5 hr
DOP Pump	Recovery	1	2	1 hr	1 hr
Peristaltic Pump	Recovery		2	1 hr	
Trash Pump	Recovery	1	2	1 hr	
Diaphragm Pump	Recovery	1	2	1 hr	
TransVac	Recovery	1	2	2 hr	
Fastank	Storage	1	2 for setup	1 hr	
Suction Hose (2 in)	Transfer	≥20 ft	-	2 hr	
Suction Hose (3 in)	Transfer	≥20 ft	-	2 hr	
Discharge Hose (3 in)	Transfer	≥50 ft	2 for setup	1 hr	

### **Support**

EQUIPMENT	FUNCTION	PIECES	NO. STAFF/SHIFT	MOBE TIME	DEPLOY TIME
Fuel Truck	Fuel Heavy Equipment	1	Once per shift	1hr	0.5 hr
Mechanic Truck	Support Equipment	1	1	1hr	0.5 hr
Light Plant	Illumination	≥1	2 for Initial setup and 1 to check and fuel	1hr	0.5 hr
Semi and Trailer	Haul Backhoe	1	1	1hr	0

### **Collection with Portable Skimmers and Pumps**

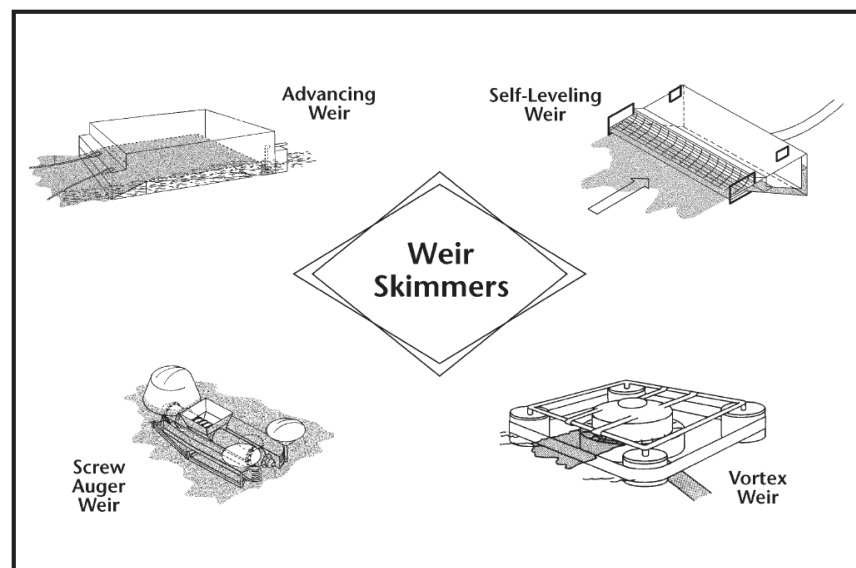
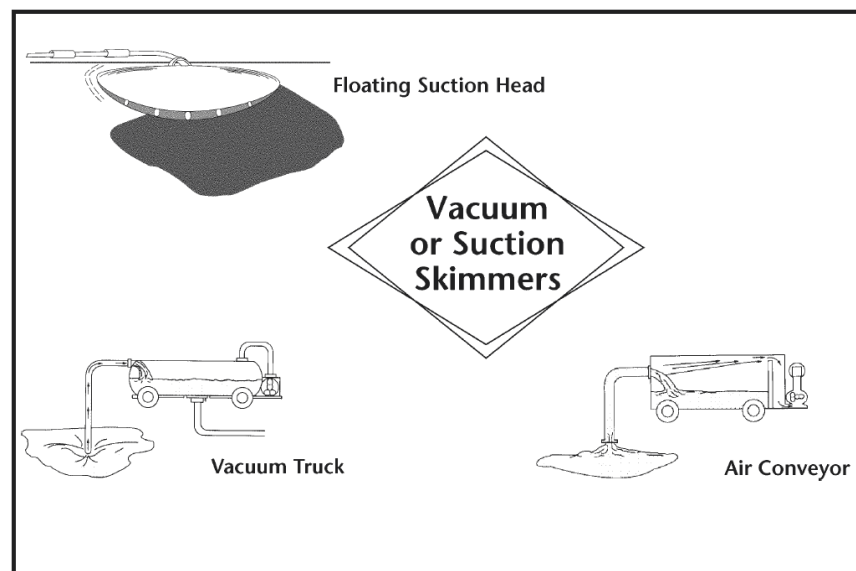
Portable skimmers are easily mobilized, transported, and deployed and can be used in most spill situations for recovery. They can be used to recover oil from containment areas such as the apex of a diversion boom or natural or artificial deadarms. The typical portable skimming system includes:

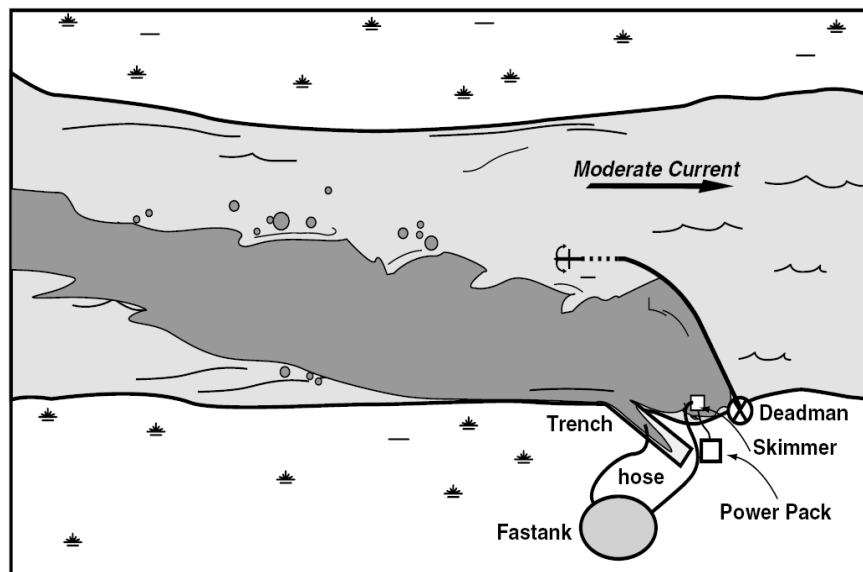
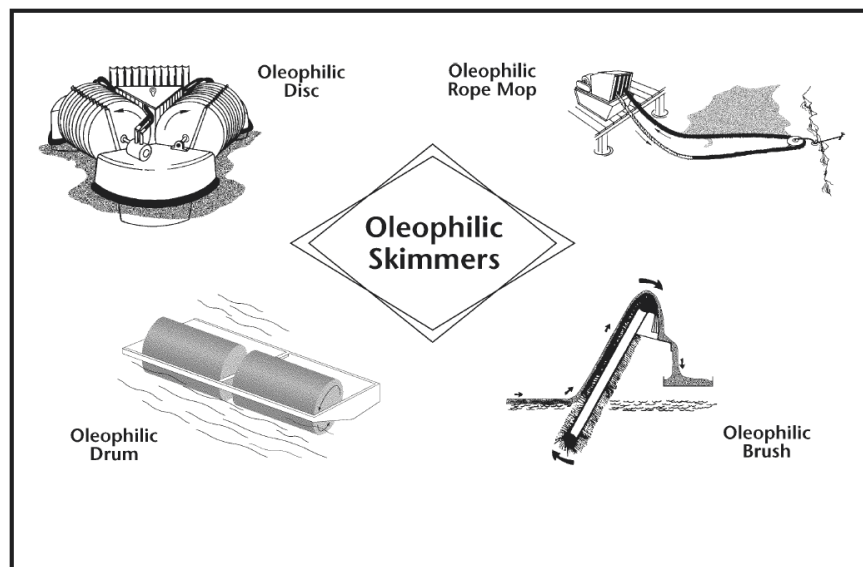
- Skimmer, pump, or skimmer/pump (with fuel) with power pack
- Hose (suction and discharge with fittings)
- Storage container (tank truck, storage bladder, barrels, Fastank, etc.)

Portable skimmers can be deployed on land or from small boats to recover oil contained on water.

A weir skimmer has a “lip” or weir at its intake over which liquids flow into the skimmer pump. The user can adjust the working depth of the weir. Weir skimmers will pick up any product on water, including emulsified and weathered product; however, they recover more water than oil in thin oil layers. (Avoid using a centrifugal pump since emulsification will occur; use a diaphragm pump instead.)

Oil adheres to an oleophilic skimmer, while water is repelled. These skimmers include rotating disks, rotating drums, or endless belts (including rope mop). Brush and rope mop skimmers can be effective in any oil thickness, while disk and drum skimmers require fresh oil. (Any pump can be used as long as the pump rate can be adjusted so as not to exceed the recovery rate of the skimmer).





***Deployment Considerations and Limitations***

- Portable skimmers are initially used to pick up concentrations of oil, then are used in containment areas. The skimmers can be land-based or deployed from boats, and require power packs (a jon boat can be used for the power pack). When requesting a skimmer, always ask for the total skimming system
- The only differences in equipment or techniques for road access or no road access are logistical in nature.
- Position the skimmer or pump with suction hose in area of heaviest spill concentration. Make sure intake end of hose is fitted with a screen. Use a diaphragm pump (not a centrifugal pump) with a weir skimmer.

***Equipment and Personnel***

- Typically, portable skimmers require 2 persons for setup and 1 or 2 people to operate.

***Support***

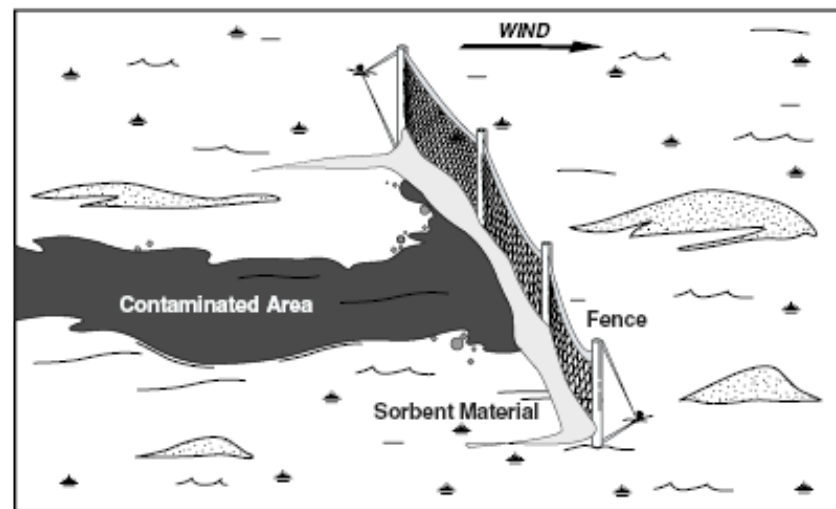
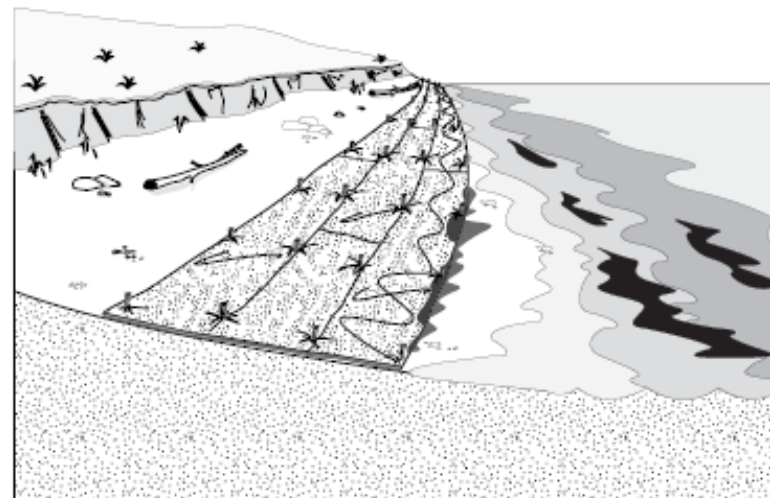
- Fold-A-Tank, bladders, Fastanks, Rolligon with tank, mini-barge possible.

### **Collection with Sorbents**

Sorbents can be deployed to serve as a protective agent, a cleanup agent, or both. The sorbent materials such as rolls, pads or snares are placed in the shore zone to collect oil as it comes ashore (protection) or in the oiled area after it has been stranded (cleanup). If the spill is at the shoreline, sorbent boom can be deployed and backed up with conventional containment boom as necessary to keep the oil from drifting away.

### ***Deployment Considerations and Limitations***

- Use of sorbents should be minimized because of disposal problem
- Sorbent wringers can be used to extend the life of sorbents
- Do not use pom-poms in conjunction with pumping
- Sorbents work well on fresh crude, light refined oils, and thick sheens, but are only partially effective on solidified or weathered oil, highly viscous oil, very thin sheens or emulsified oil. Sorbent products are ineffective unless all layers become saturated when in contact with spilled product. Use sorbent boom when overland flow is minor, and terrain has low slope or is wetland.
- Sections of sorbent boom can be placed at the water level and secured with fence posts every 10 feet to catch any oil that may be going back out into the water.



### ***Equipment and Personnel***



EQUIPMENT
Sorbent Boom (8 inch)
Double Sorbent Boom (8 inch)
Sorbent Boom (4 inch)
Double Sorbent Boom (4 inch)
Sorbent Pads (18x18 inch)
Sorbent Sweeps (18x18inch)
Sorbent Pads (36x36inch)
Sorbent Roll (36in x 150ft)
Pom Poms

- Personnel requirements depend on the nature and area of oil contamination. Personnel typically work in pairs for sorbent deployment and recovery. Additional personnel are required for loaders, dump trucks, vessel, etc.

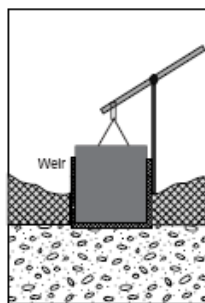
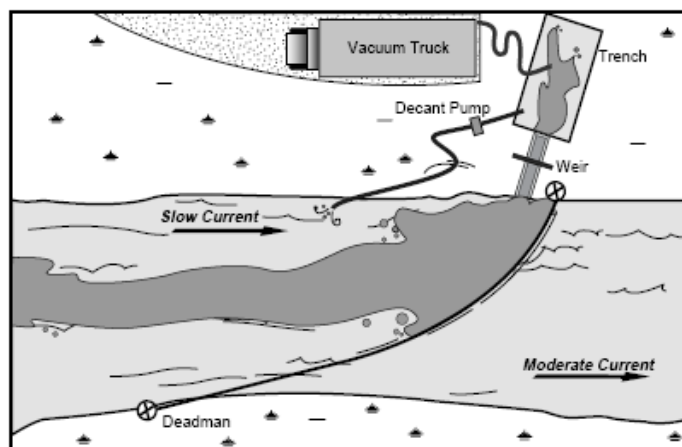
***Support***

EQUIPMENT	FUNCTION	PIECES	NO. STAFF/SHIFT	MOBE TIME	DEPLOY TIME
Rakes	Recovery	≥1	1 per	1hr	0
Pitchforks w/Screen	Recovery	≥1	1 per	1hr	0
Shovels	Recovery	≥1	1 per	1hr	0
Oily Waste Bags	Disposal	≥1 Box	-	1hr	0
Fencing Material	Containment	Variable	2	1hr	2 hr

### Containment with Gate Weir

The Fairchild gate weir provides a closable opening for an existing storage trench or deadarm along a river bank. Oil moving on the river is deflected so that it enters the recovery weir into the storage area, and the liquid flow can be controlled as necessary.

A 3- or 4-inch trash pump is used to decant fluids back upstream into the boomed area. This will allow for greater storage capacity in the trench area.



### *Deployment Considerations and Limitations*

- Use an existing trench or deadarm. If necessary, dig a new one or modify an existing one
- Disposal of construction material should be taken into account before using this tactic
- Do not excavate where excavation will cause more damage than the spill.
- The amount of oil will be estimated based on gauging by appropriate means. Emulsion samples will be collected and analyzed for oil content.

### *Equipment and Personnel*

EQUIPMENT	FUNCTION	PIECES	NO. STAFF/SHIFT	MOBE TIME	DEPLOY TIME
Backhoe	Trenching	1	1	2 hr	3 hr
Vacuum Truck (300bbl)	Recovery	1	1	1 hr	
Fairchild Weir	Recovery		2	1 hr	
Trash Pump	Decanting	1	1	1 hr	
Suction Hose	Liquid Tran.	≥20	2 for setup	2 hr	
Discharge Hose	Liquid Tran.	≥20	-	1 hr	

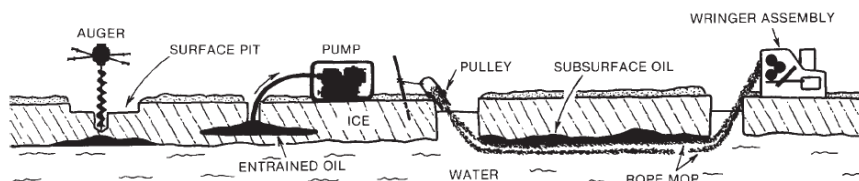
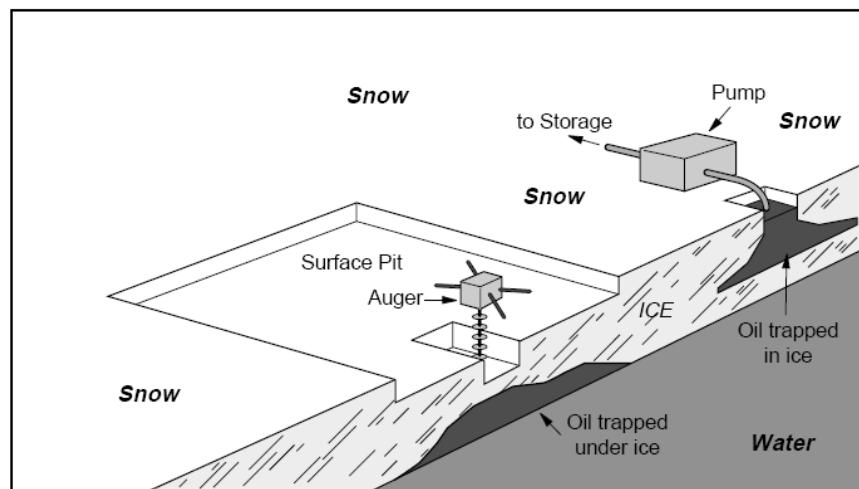
### *Support*

EQUIPMENT	FUNCTION	PIECES	NO. STAFF/SHIFT	MOBE TIME	DEPLOY TIME
Avgas Trailer	Airboat Fuel	1	1 (initial)	1hr	0.5 hr
Fuel Truck	Fuel heavy equipment	1	Once per shift	1hr	0.5 hr
Mechanic Truck	Support equipment	≥1	1	1hr	0.5 hr
Lube Truck	Provide fluids to equipment	1	Once per shift	1hr	0.5 hr

### Collection Under Ice

A sump is cut in the ice around a hole augered through the ice to pockets of oil under the ice or encapsulated in the ice. The oil is pumped directly from the sump to temporary storage containers. A heated shelter can be erected over the sump.

Another option involves deploying rope mop through holes in the ice to recover oil trapped in under-ice depressions. Two holes are drilled in the ice using ice augers or chainsaws, and the rope mop is strung under the ice between the holes.



### *Deployment Considerations and Limitations*

- Heat inside the shelter will make the rope mop and pump more effective
- Disposal of construction material should be taken into account before using this tactic
- Check the thickness for safe bearing capacity before working on ice. The ice must be sufficiently strong to support personnel and heavy equipment. Also, ensure ice can withstand extra load of oil and snow on the surface without either breaking the ice or forcing oil to migrate through existing cracks. Extreme care must be taken when positioning or operating any heavy equipment close to trenches or slots in the ice. Stresses in the ice for a given load can double under these situations. Ensure that oil that accumulates in an ice trench is continually removed. If allowed to build up to a thick layer, some oil may escape the ice slot.

### *Support*

EQUIPMENT	FUNCTION	PIECES	NO. STAFF/SHIFT	MOBE TIME	DEPLOY TIME
Tioga Heater	Heat	1	1 (initial)	1hr	0.5 hr
Mechanic Truck	Support equipment	1	1	1hr	0.5 hr
Light Plant	Illumination	≥1	2 for initial setup, and 1 to check and fuel	1hr	0.5 hr

#### **4. OTHER TACTICS**

##### **Burning With Heli-Torch and Other Igniters**

Numerous methods are available for the ignition of floating oil. Hand-held pyrotechnic devices such as Dome igniters can be armed and tossed by hand from a helicopter or vessel. If such devices are unavailable, one can often make a simple though effective igniter on location using oil-soaked rags, sorbents, or even a roll of toilet paper. When it is unsafe to use such igniters, and particularly when a large, intense ignition area is needed, a Heli-torch may be used.

An example is the Simplex Model 5400 Heli-torch. It is a helicopter-slung device for delivering measured amounts of burning gelled fuel to an oil slick for purposes of igniting the slick.

The Heli-torch can be used to ignite inaccessible oil pockets collected in quiet-water areas or on melt pools on the ice.

##### ***Deployment Considerations and Limitations***

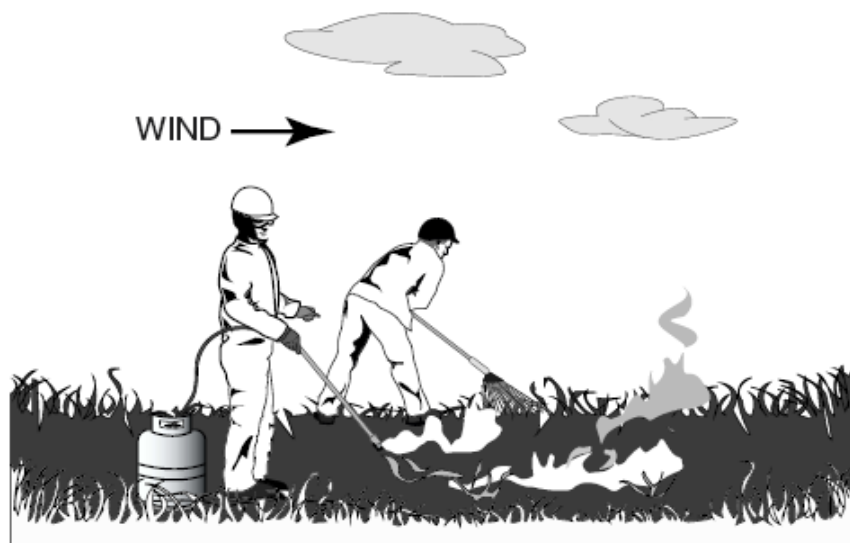
- Proper safety procedures must be followed, and the necessary personal protective equipment (PPE) must be used.
- Follow all manufacturer's instructions carefully. Designated personnel on the surface and in the air maintain a constant watch of the fire and smoke plume, the condition of the boom, the speed and positions of the towing vessels, and the proximity of the burn operations to other vessels, oils slicks, the shoreline, etc. In addition, each vessel should maintain constant contact with the supervisor. The supervisor of the burn operation must be in direct radio contact with all elements of the burn team, including aircraft and the mixing/loading crew.

- It is critical that communications be available to ensure coordination between the burn operations supervisor and all elements of the response. All personnel involved in the operation must be in constant contact with the burn operations supervisor. The following communications are necessary for a burn on water:
  - Dedicated radio links and equipment with specific frequencies for air-to-air and air-to ground communications
  - Dedicated radio links and equipment with specific frequencies for vessel-to-vessel and vessel to-command communications
  - Repeater stations as appropriate for distant or blocked communications paths
  - Emergency manual signal (e.g., light or siren)
- Take care when filling, mixing, and dispensing raw or gelled fuel. Always connect a ground wire to an earth ground. Use a non-sparking pump in a well-vented area. When mixing by hand, use wooden or aluminum paddles. Have at least two 20-lb dry-chemical fire extinguishers in both the fuel mixing and Heli-torch filling areas. Personnel mixing and dispensing fuel must wear antistatic protective clothing.
- The charter company supplying the helicopter must be FAA-certified to sling-load petroleum. In addition, the pilot must have FAR Part 137 certification.
- Burning gelled fuel may sometimes fall off the Heli-torch while in transit to or from the burn site. Pilots should plan their flight path to minimize the risk of starting unwanted fires.



**Burning Oily Vegetation**

A response worker rakes oiled vegetation with a metal rake so that grass stems are oriented more or less vertically. A second response worker uses a weed burner, which consists of a flame nozzle, hosing, and a propane tank. The weed burner is held just above the oiled vegetation until the vegetation is burned down to stubble. Care is taken not to burn vegetation down to soil, which would damage the root system. Work is started on the upwind edge of the oiled area and proceeds downwind so that response workers are not exposed to smoke.



***Deployment Considerations and Limitations***

- Proper safety procedures must be followed, and the necessary personal protective equipment (PPE) must be used.
- Do not walk on oiled vegetation.
- Burning of oiled vegetation is conducted as a non-emergency project and has the objective of reducing re-oiling of adjacent areas. Burning proceeds downwind from its starting point. Care is taken to avoid contaminating unaffected areas. Burning is most effective immediately after the spill, before evaporation of volatile components.
- Take care to avoid secondary fires. If there is access to water, the oiled area and the surrounding vegetation can be saturated with water. Wet vegetation will still burn under the direct flame of a weed burner.
- Fire suppression must be on hand, with staff in direct control.
- Open burn permit may be required.

***Equipment and Personnel***

EQUIPMENT	FUNCTION	PIECES	NO. STAFF/SHIFT	MOBE TIME	DEPLOY TIME
Weed Burner w/Propane Tank	Surface oil removal	1	1	1 hr	0.5 hr
Rake (metal)	Rake vegetation upright	≥1	1	1 hr	0
Fire Extinguisher	Suppression of unwanted fire	≥2	-	0.5 hr	0

### **Air Sparging**

Air sparging can be used to reduce concentrations of volatile organic compounds in water, which can appear in the event of an ethanol spill. The injection of clean air into the contaminated water enables a phase transfer of hydrocarbons from a dissolved state to a vapor phase. Sparging adds dissolved oxygen to the water, lessening the effect of the breakdown of compounds that may otherwise lead to hypoxic conditions. It has also been shown to be an effective remedy for soil contaminated by leaking underground storage tanks.

The air sparging system can be built with parts commonly found at home centers or hardware stores. Eight coiled soaker hoses are mounted on a chain link gate with zip ties. The hoses are fitted to two four-way brass manifolds, which are in turn connected to a two-way brass manifold. This manifold is fitted to the hose of an air pump. The gate is lowered into the contaminated water. Air pumped through the sparging system aerates a small area of water for as long as it runs.

#### ***Deployment Considerations and Limitations***

- Products such as ethanol biodegrade quickly in water, locally reducing the levels of dissolved oxygen.
- In larger volumes, ethanol and gasoline can separate in water. Responders should be aware if product is blended and prepare for gasoline containment, as well. Ethanol will mix with the water while gasoline floats.

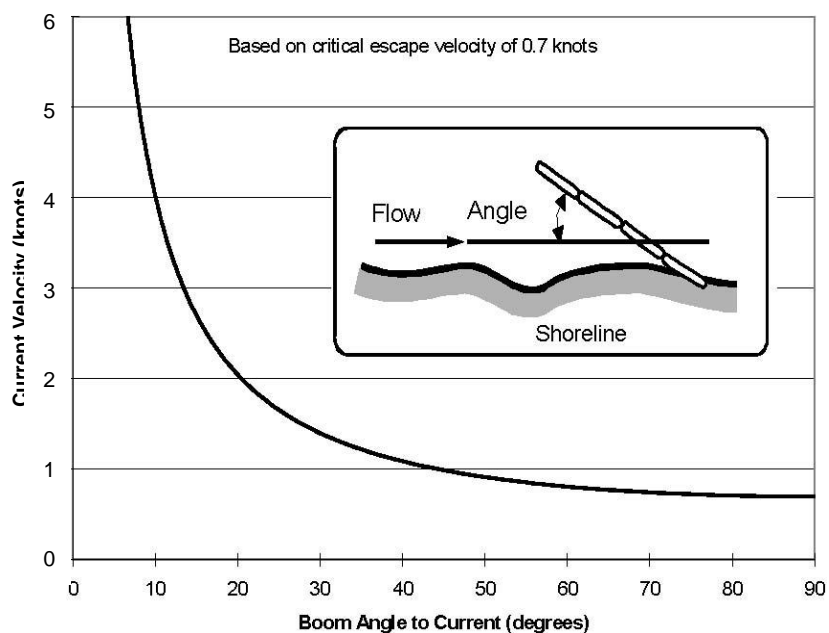


EQUIPMENT	FUNCTION	PIECES	NO. STAFF/SHIFT	MOBE TIME	DEPLOY TIME
Chain link gate	Frame	1	1	-	0.5 hr
Soaker hoses	Aeration	8	1	-	
Manifolds and fittings	Assembly	≥3	1	-	
Air pump	Operation	1	1	0.5 hr	

**5. CALCULATING PROPER DEPLOYMENT OF BOOM**  
**Maximum boom deployment angles to prevent entrainment**

Entrainment refers to the loss of oil from containment when it is pulled under a boom by the water passage below. This typically occurs when boom is deployed at too high an angle. An accurate determination of current direction and velocity is important in order to select the proper tactic and deploy the equipment correctly. The following tables should be used to determine the appropriate angle at which to set boom.

The additional forces exerted on a boom caused by the mooring line angle are often neglected, but they become very large at shallow angles. A boom in a slack “U” configuration has mooring lines parallel with the current or at 0 degrees. The total tension load on each mooring line is simply the drag force on the boom divided by two. As the orientation of the boom mooring line relative to the current approaches 90 degrees, the tension on each mooring line increases dramatically. Tension in the table below is calculated for a 6-inch draft boom with a 100-foot projected sweep width (boom profile) to the current.



Mooring line loads:

Mooring Line Angle (degrees)	Each Mooring Line Tension (pounds force)					
	Current:					
	1 knot	2 knots	3 knots	4 knots	5 knots	6 knots
0	137	547	1,231	2,188	3,419	4,923
5	137	549	1,235	2,196	3,432	4,942
10	139	555	1,250	2,222	3,471	4,999
20	146	582	1,310	2,328	3,638	5,239
25	151	604	1,358	2,414	3,772	5,432
30	158	632	1,421	2,526	3,948	5,685
40	179	714	1,607	2,856	4,463	6,427
45	193	774	1,741	3,094	4,835	6,962
50	213	851	1,915	3,404	5,319	7,659
60	274	1,094	2,462	4,376	6,838	9,846
70	400	1,599	3,598	6,397	9,996	14,394
80	788	3,150	7,088	12,600	19,688	28,350
85	1,569	6,276	14,121	25,104	39,226	56,485
89	7,836	31,342	70,520	125,370	195,890	282,081



To measure the speed of the current, time how many seconds it takes for debris to float between two markers 100 feet apart. The following table provides an estimate of the length of boom required for deflecting oil at a specified angle for a 100-foot profile (perpendicular width) to the current. It also provides an estimate of the number of anchors or shoreline tiebacks needed for that length of boom.

*Current chip log and maximum deflection angle:*

<b>Time to Drift 100ft (seconds)</b>	<b>Velocity (ft/sec)</b>	<b>Velocity (m/sec)</b>	<b>Velocity (knots)</b>	<b>Max Boom Deflection Angle (degrees)</b>	<b>Boom Required for 100ft Profile to Current (feet)</b>	<b>Anchors Needed if Placed Every 50 feet</b>
6	16.7	5.1	10.0	4.0	1,429	30
8	12.5	3.8	7.5	5.4	1,071	22
10	10.0	3.0	6.0	6.7	857	18
12	8.3	2.5	5.0	8.0	714	15
14	7.1	2.2	4.29	9.4	612	13
17	5.9	1.8	3.53	11.4	504	11
20	5.0	1.5	3.0	13.5	429	10
24	4.2	1.3	2.5	16.3	357	8
30	3.3	1.0	2.0	20.5	286	7
40	2.5	0.8	1.5	27.8	214	5
60	1.7	0.5	1.0	44.4	143	4
>86	≤1.2	≤0.35	≤0.7	90.0	100	3

**6. REFERENCES**

*Alaska Clean Seas Technical Manual Volume 1 – Tactics Descriptions*. Anchorage, AK: Alaska Clean Seas, 2010.

*Oil Spill Response in Fast Currents – A Field Guide*. Groton, CT: U.S. Coast Guard Research and Development Center. 2001: Report no. CG-D-01-02

*Oil Spill Response Underflow Dams and Containment Structures*. Kansas City, KS: Davis, J., EPA Region 7, Presentation, 2010.