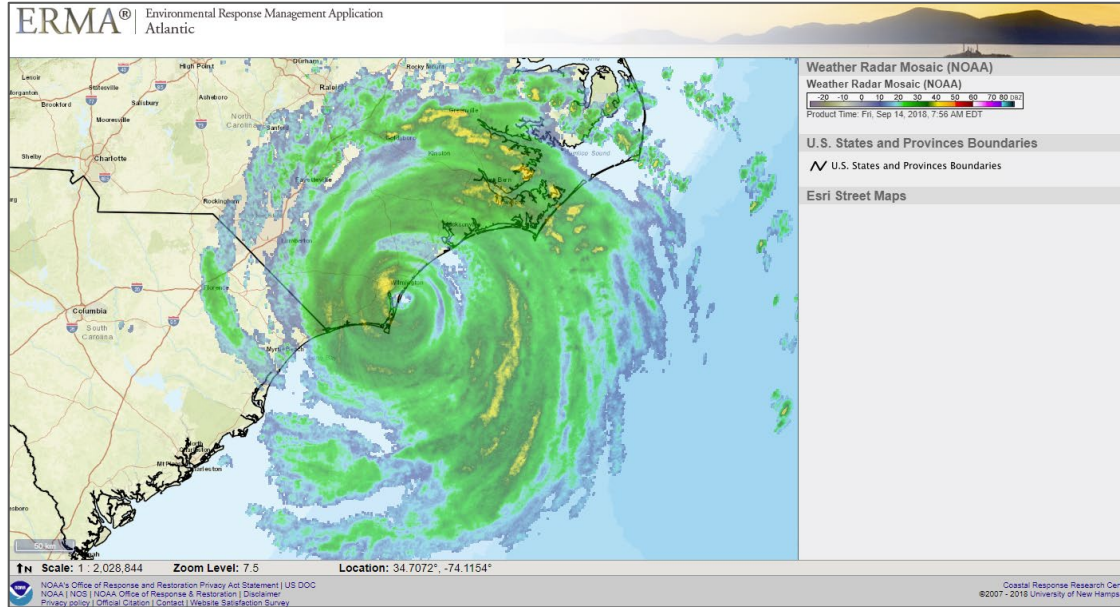


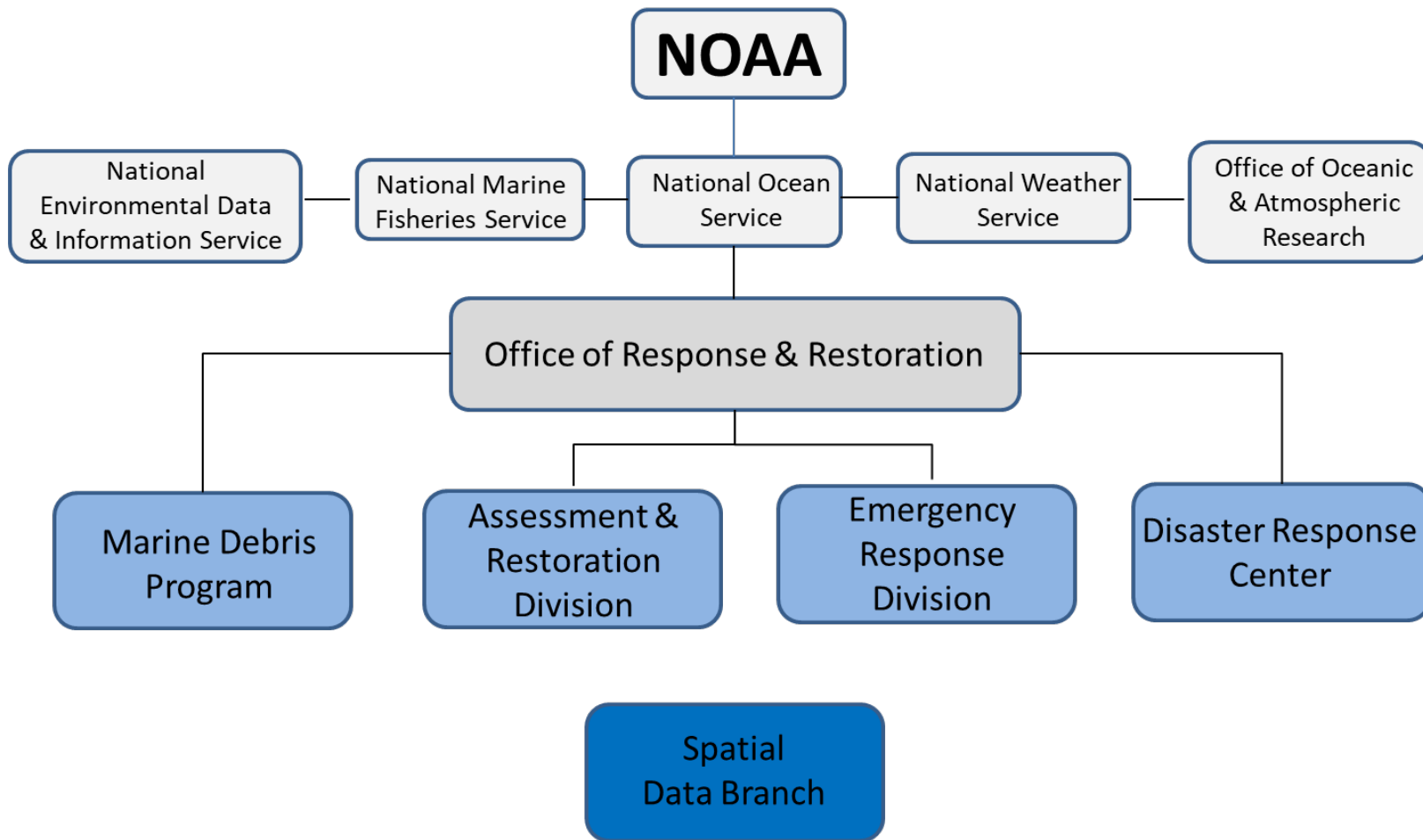
# The Environmental Response Management Application ERMA®



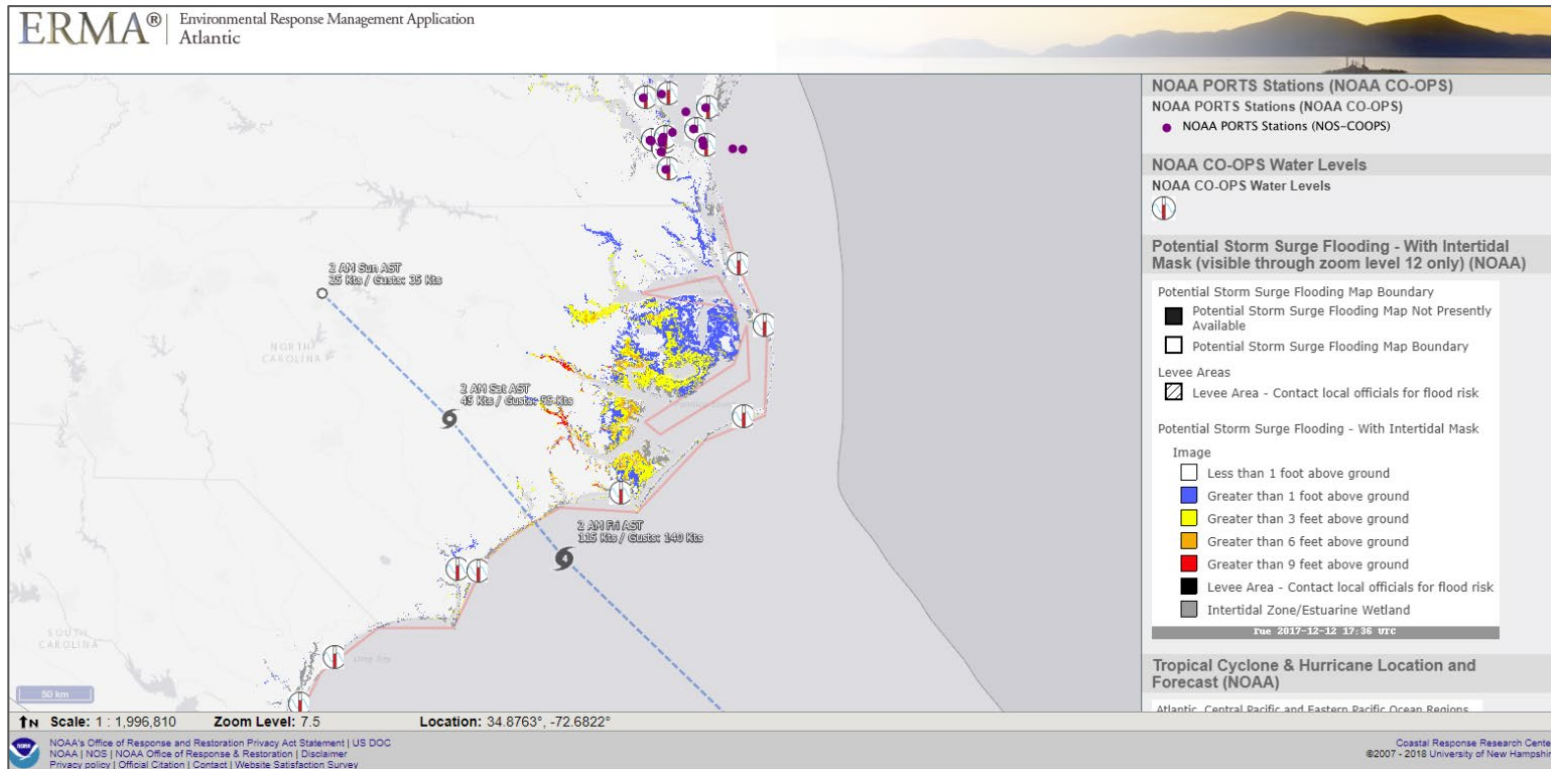
Jay Coady  
Office of Response & Restoration  
Assessment and Restoration Division  
Spatial Data Branch

[response.restoration.noaa.gov](https://response.restoration.noaa.gov)





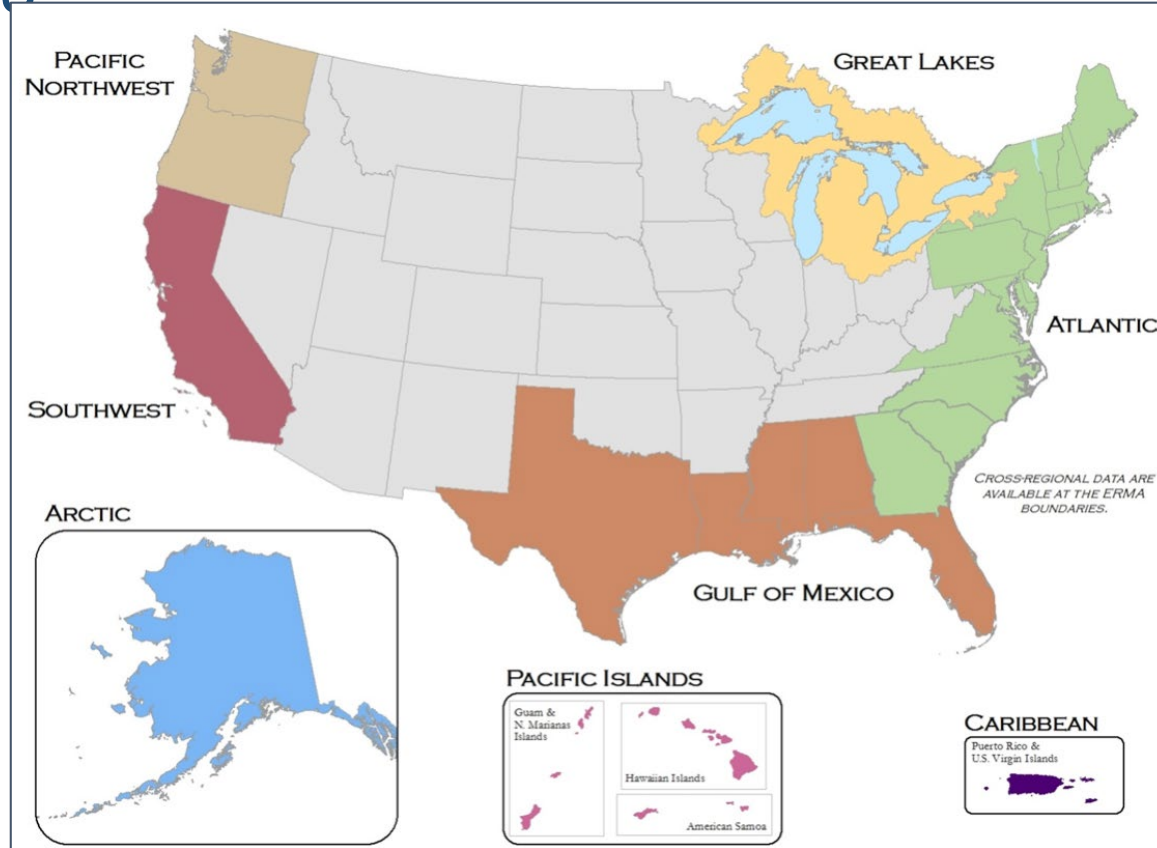
# ERMA is an online mapping tool for visualizing environmental information relevant to oil spills and natural disasters.



# Key Functionality

- Access ERMA via any Web browser. No special software needed.
- Provides centralized access to information
- Tiered system security that protects data.
- Standardized user interface; simplifying data uploading.
- Build customized maps using layers.
- Create and view customized sets of layers quickly with bookmarked views.
- Investigate and compare data quickly with Dashboards and

# ERMA Regions



# ERMA Accounts

- Public access - no login required
- Restricted accounts:
  - Verified by NOAA
  - Various levels of access
    - Active incidents
    - Sensitive datasets
    - NRDA/Trustee
    - Drills
  - Password reset 90 days; inactive accounts 6 months
  - Data available only to appropriate users and use

**Account Support:** [orr.ermaaccounts@noaa.gov](mailto:orr.ermaaccounts@noaa.gov)

# ERMA Support

- ERMA is available 24/7/365
- If specific support is needed for a drill or incident coordinate with NOAA SSC
  - Small incident = remote support
  - Large incident = dedicated ERMA staff on-scene
    - Immediate Field Data QA/QC & Daylight Data Gaps
    - Ensures Highest Quality Data for Unified Command
    - Situational Awareness to Off-Site Leadership & Partners
    - Ensures Federal Retention of Response Data

# Incident Response With ERMA

- **Operations Section**
  - Incident Location
  - Vessel Locations
  - Dispersant Zones
  - In-Situ Burns
  - Divisions & Segments
  - Booming Strategies
- **Environmental Unit**
  - Threatened & Endangered Species
  - SCAT Data
  - Sensitive Sites
  - Wildlife Observations
  - Overflight Observations
- **Situation Unit**
  - Mirror SitStat Board
  - Trajectories
  - Weather
  - Current Operations
- **Unified Command**
  - Up-To-Date Picture of All Operations
- **JIC**
  - Up-To-Date Picture of All Operations
  - Potential to show publicly released data



# Hurricane Response With ERMA

- Base environmental data
- Live data streams
  - Storm tracking, surge modeling, current water levels, ship locations, and more.
- Critical infrastructure
- Pre/post storm imagery
- Quick turnaround post storm data
- Live tracking of ESF-10 targets

# ERMA Layout

The screenshot displays the ERMA Management Application interface. The main map area shows the Eastern United States with various geographical features and city labels. Several components are highlighted with orange callout boxes:

- Info/Admin Tabs:** Located at the top left, containing 'Information', 'Help', 'Recent Data', 'Admin', 'Upload', and 'Incident'.
- Search:** A search bar at the top center with the text 'Search Layers, Folders, and Bookmarks'.
- Map Toolbar:** A vertical toolbar on the left side of the map.
- Map Controls:** A vertical control panel on the left side, below the toolbar.
- Map Key:** A key at the bottom left showing the current scale (1:5M) and zoom level (6).
- Table of Content:** A panel on the right side listing various layers and features.
- Bookmark Panel:** A panel at the bottom right showing bookmark views.
- Display Controls:** A panel at the bottom right for displaying map controls.

The interface also includes a 'Tool Tabs' section at the top right with options like 'Layers', 'Legend', 'Draw', 'Query Tools', 'Zoom', 'Download', and 'Print'. A 'Login/out' button is visible in the top right corner. The status bar at the bottom provides location coordinates (45.44249°, -83.63681°) and a disclaimer: 'US DOC | NOAA | NOS | NOAA Office of Response & Restoration Disclaimer | Privacy policy | Official Citation | Email comments'.



# Finding Data

The screenshot displays the ERMA Atlantic web application. The interface includes a top navigation bar with tabs for Information, Help, Recent Data, Admin, Upload, and Incident. A search bar contains the text 'bird'. Below the navigation is a map of the Eastern United States, showing major cities like Toronto, Detroit, Cleveland, and Washington, D.C. A list of data layers is visible on the right side of the map, including 'activate layer - Apalachicola National Estuarine Research Reserve Coastal Shorebird Monitoring (883)', 'activate layer - Audubon Important Bird Areas (National)', and 'activate layer - Bird Habitat (TX-GLO)'. A red arrow points from the search bar to the 'Search Tool' bullet point. Another red arrow points from the 'Recent Data' tab to the 'Recent Data' bullet point. A third red arrow points from the 'Bookmark Views' section to the 'Bookmarks' bullet point. The map shows a scale of 1:5M and a zoom level of 6. The location is 45.44249°N, -83.63681°W.

- Search Tool
- Recent Data
- Table of Contents
- Bookmarks



# ERMA Layer Metadata

**ERMA®** | Environmental Response & Assessment | Atlantic

Information Help Recent Data Admin Upload

Parent Folder: Admin Boundaries & Reference Features>Federal Agency Regions & Offices

Layer Name: EPA Region Boundaries

Layer Sensitivity: Public

Sites: All

Full Metadata: [metadata](#)

ERMA WMS Capabilities: <https://erma.noaa.gov/maps/wms/17884?request=getCapabilities&service=WMS>

Last Modified: 2016-12-09 19:09:20-05

Last Modified By: Bodnar, Jill (NOAA/ORR, Genwest)

Shapefile: Environmental\_Protection\_Agency\_EPA\_Regions

Date Uploaded: 8/25/2016 1:43 pm

Uploaded By: Eckhardt, Nicolas (NOAA)

Geometry: POLYGON

**Additional Information:**

**Abstract:** This dataset represents delineated EPA Region boundaries. EPA has ten regional offices across the country, each of which is responsible for several states and in some cases, territories or special environmental programs. This Shared Enterprise Geodata and Services (SEGS) dataset was created by U.S. EPA using 2011 TIGER/Line state boundaries from the U.S. Census Bureau. The core mission of SEGS is to provide a single point of ownership for geospatial datasets that are national in extent and of general use to all EPA users and to make those datasets available through channels that best meet user needs.

**Purpose:** This dataset represents delineated EPA Region boundaries.

**Description:** This dataset represents delineated EPA Region boundaries. EPA has ten regional offices across the country, each of which is responsible for several states and in some cases, territories or special environmental programs.

This Shared Enterprise Geodata and Services (SEGS) dataset was created by U.S. EPA using 2011 TIGER/Line state boundaries from the U.S. Census Bureau. The core

Layers Legend Draw Query Tools Zoom Download Print

Background Layers

Admin Boundaries & Reference Features

Federal Agency Regions & Offices

- World Time Zones
- EPA Office Facilities
- EPA Region Boundaries
  - EPA view metadata
  - EPA zoom to extent
  - EPA bring to front
  - EPA send to back
  - EPA view data
- FEMA Recovery Offices (HSIP 2015)
- FEMA Regions
- FEMA Regional Headquarters (HSIP 2015)
- Military Bases, Long Island Sound
- National Park Service boundaries (NPS)
- NOAA DARRP Regions
- NOAA ENS Users and Locations
- ENS Users Range Polygons
- NOAA Locations

Scale: 1 : 5M Zoom Level: 6

US DOC | NOAA | NOS | NOAA Office of Response & Restoration  
Disclaimer | Privacy policy | Official Citation | Contact

Coastal Response Research Center  
©2007 - 2017 University of New Hampshire

# ERMA Layer - Data View

Incident Response  
ResponseLink Hotlines  
 NOAA ORR Incident News  
 All ResponseLink Hotlines (NOAA)  
 Active  
 Major  
 Dispe  
(NOAA)  
 Dispe  
(NOAA)  
2021

view metadata  
enable popup  
zoom to extent  
bring to front  
send to back  
**view data**

Right-click "view data"

- Columns
- Clear All Filters
- Refresh
- View Summary Stats
- Create Temporary Layer**

Rows 1 to 100 of 2,500 rows

name	spill_date	url	effort	threat	commodity
1001	Tarballs	2002-03-29	<a href="https://responselink.o">https://responselink.o</a>		
1002	Little Lake Pipeline Spill	2002-04-07	<a href="https://responselink.o">https://responselink.o</a>		South Louisiana
1003	Detroit River Mystery Sp	2002-04-10	<a href="https://responselink.o">https://responselink.o</a>		Light lubricator
1004	Soy Oil Spill		<a href="https://responselink.o">https://responselink.o</a>		Soy bean oil
1005	T/V Crude Target		<a href="https://responselink.o">https://responselink.o</a>		West African Cr
1006	M/V Ocean Club	2002-05-19	<a href="https://responselink.o">https://responselink.o</a>		diesel with som
1007	T/V Sea Jackie	2002-05-22	<a href="https://responselink.orr">https://responselink.orr</a>	Products generated	heavy fuel oil
1008	SS Jacob Luckenbach O	2002-05-23	<a href="https://responselink.orr">https://responselink.orr</a>	On-scene support	Oil Bunker fuel
1010	Green Canyon Block My	2002-05-30	<a href="https://responselink.orr">https://responselink.orr</a>	Products generated	
1011	Liquid Asphalt Release	2002-07-05	<a href="https://responselink.orr">https://responselink.orr</a>	On-scene support	Oil Asphalt emulsi
1012	Navy Barge SWOB 286	2002-07-05	<a href="https://responselink.orr">https://responselink.orr</a>	Products generated	Oil Waste Oil, Dies
1013	Magnolia Oil Field Well	2002-08-11	<a href="https://responselink.orr">https://responselink.orr</a>	On-scene support	Oil Crude oil

Excel-style Filtering

Filter choices... X

- Select All
- Notification
- On-scene support
- Phone support
- Products generated

OK Reset Close

String Filtering

# ERMA Layer - Identify

ERMA® Environmental Response Management Application  
Atlantic

Information Help Recent Data Dashboards Admin Search Layers, Folders, and Bookmarks Geographic Search

Layers Legend Draw Query Tools Zoom Download Print

Clear Layers Collapse Folders Manage

- EPA/USCG region 3 Jurisdictional Boundary Line (USCG)
- EPA / USCG Region 3 Jurisdictional Boundary Line (EPA, 2016)
- EPA / USCG Region 4 Inland Water Boundary (EPA)
- EPA / USCG Region 4 Jurisdictional Boundary Line (EPA, 2016)
- FEMA Recovery Offices (HSIP 2015)
- FEMA Regions
- FEMA Regional Headquarters (HSIP 2015)

ID Location: 41.07408, -71.51668 - Google Chrome  
erms.noaa.gov/ident.html?v=e6b79dee

ID Location: 41.07408, -71.51668  
Add Selected Features To Query Tools Tab

USCG Sectors (USCG, 2014)

gid	objectid	sectorname	atu	opfac	districtna	areaname	name	emergency_field	shape_leng	shape_area
12	12	Long Island Sound	1	37030	District 1	Atlantic Area	Sector Long Island Sound	800-774-8724	2011863.2080958262	151178355976.72280
24	24	Southeastern New England	1							

Scale: 1 : 1,993,929 Zoom Level: 7.7 Location: 42.6654°, -75.8517°

Bookmark Views: New clean

NOAA's Office of Response and Restoration Privacy Act Statement | US DCC  
NOAA | NOB | NOAA Office of Response & Restoration | Disclaimer  
Privacy Policy | Official Citation | Contact | Website Satisfaction Survey

Coastal Response Research Center  
8/2007 - 2022 University of New Hampshire

# ERMA Layer - Identify

Add Selected Features To Query Tools Tab

**USCG Sectors (USCG, 2014)**

gid	objectid	sectorname	atu	opfac	districtna	areaname	name	emergency_field	shape_leng	shape_area
12	12	Long Island Sound	1	37030	District 1	Atlantic Area	Sector Long Island Sound	800-774-8724	2011863.2080958262	151178355976.72280
24	24	Southeastern New England	1	37020	District 1	Atlantic Area	Sector Southeastern New England	508-457-3211	1951527.3790302316	227560783150.42084

**USCG Captain of the Port Zones (USCG, 2021)**

gid	fid	zonename	office	subzone	districtna	atu	opfac	areaname	shape_star	shape_stle	shape_leng
6	6	Southeastern New England	Providence, Rhode Island	NO	District 1	NA	NA	Atlantic Area	13.940750671000000	15.770779810900000	1951527.3785847037000
7	7	Long Island Sound	New Haven, Connecticut	NO	District 1	NA	NA	Atlantic Area	9.336999515930000	16.341496463100000	2011863.2074128503000

Scale: 1 : 1,593,929    Zoom Level: 7.7    Location: 42.3463°, -75.2092°

Add Map Data
Change Password
Logout

Layers
Legend
Draw
Query Tools
Zoom
Download
Print

Clear Layers
Collapse Folders
Manage

- EPA/USCG region 3 Jurisdictional Boundary Area (EPA, 2016)
- EPA/USCG Region 4 Jurisdictional Boundary Line (EPA, 2016)
- EPA / USCG Region 4 Inland Water Boundary (EPA)
- EPA / USCG Region 4 Jurisdictional Boundary Line (EPA, 2016)
- FEMA Recovery Offices (HSIP 2015)
- FEMA Regions
- FEMA Regional Headquarters (HSIP 2015)
- Military Bases, Long Island Sound
- National Park Service Boundaries (NPS, 2020)
- National Security Government Military Facilities (Government) (HIFLD)
- North Carolina Military Ranges (USMC, 2009)
- NOAA DARRP Regions
- NOAA ENS Users and Locations
- NOAA Staff Locations/Listing
- NOAA Locations with Staff Counts
- NOAA Facility Assets from DOC FRPM (2022-01)
- NOAA Response Asset Directory
- NOAA Line Office Locations**
  - NOAA-NWS Assets
  - USCG Captain of the Port Zones (USCG, 2021)
  - USCG Districts (USCG, 2022)
  - USCG Facilities Florida (FWRI)
  - USCG Sectors (USCG, 2014)
  - USCG Stations, New England (NOAA)
  - USCG District 3 Stations (USCG)
  - USCG Units, Northeast
  - US Fish and Wildlife Service Regional Boundaries (USFWS, 2015)
- Geopolitical Boundaries**
- Grids & Graticules**
- Marine Jurisdictions**
- Place Names & References**
- Bathymetry & Hydrology**

**Bookmark Views:**
New

# Environmental Sensitive Index (ESI)

- NOAA maintains the ESIs to provide information about sensitivity to oil spills.
- Spill planning, spill response
- Plants, animals, shoreline, ecosystems

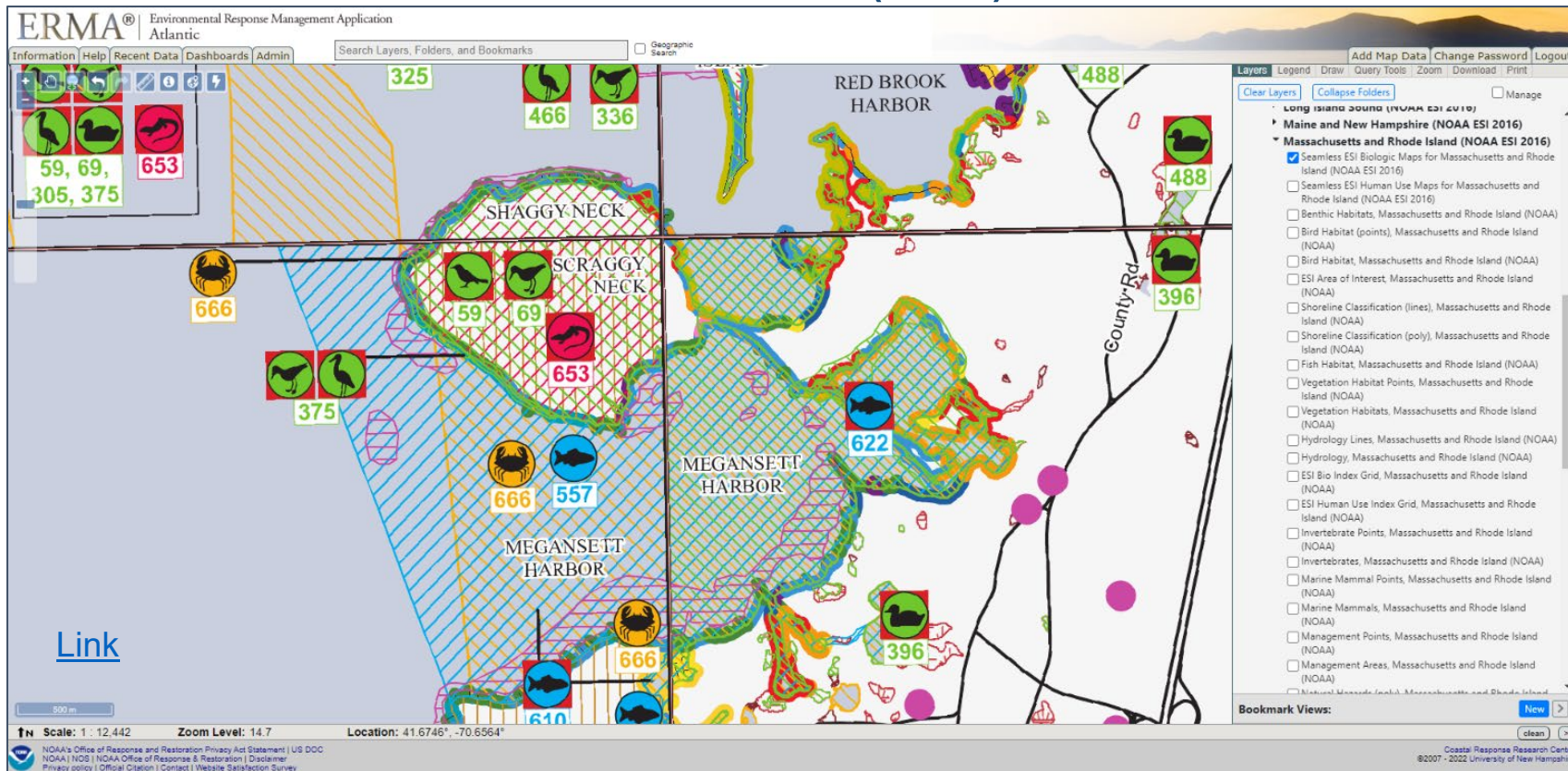
NOAA Site: [Link](#)

ERMA provides:

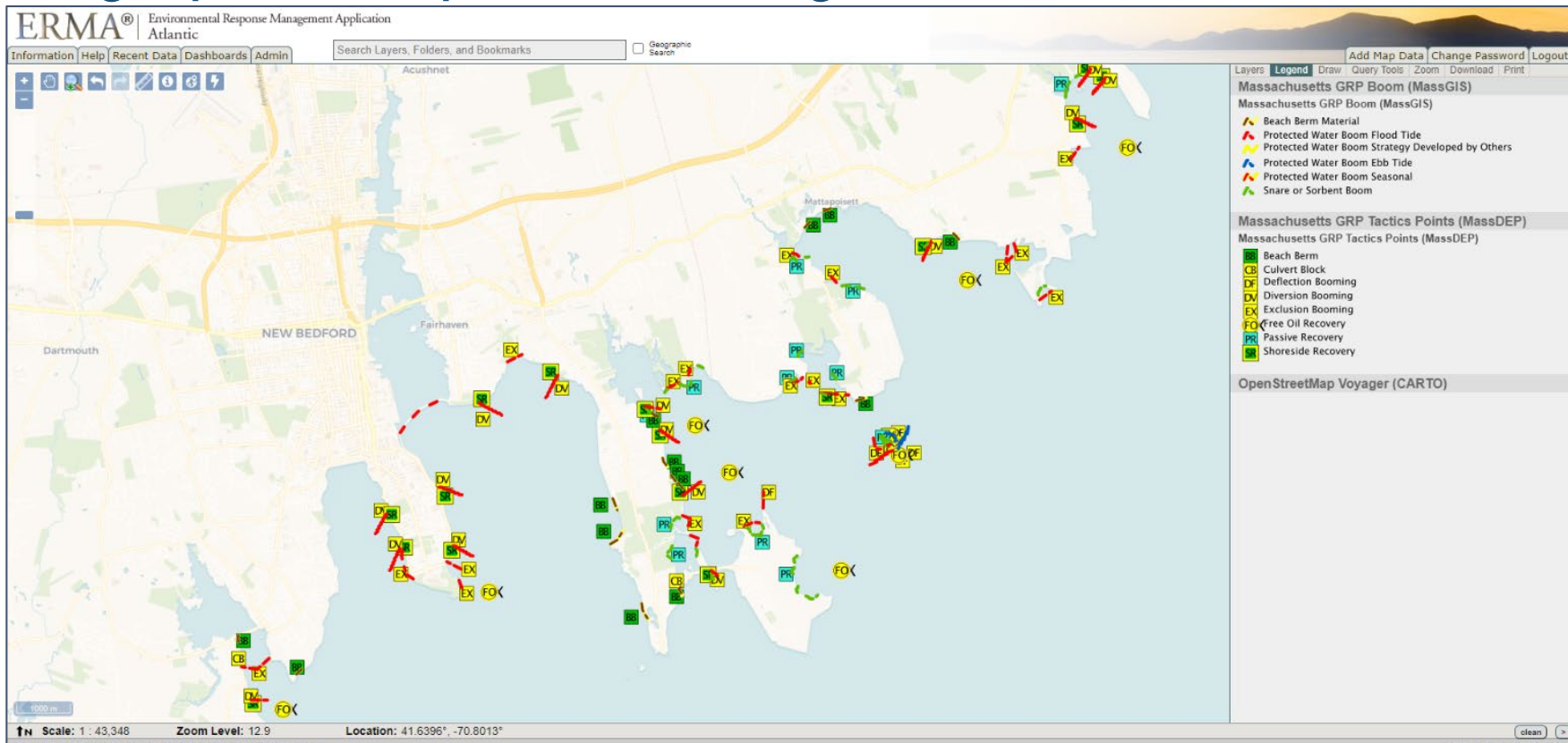
- [Links](#) to all pdf maps
- Map display within ERMA
- ESI custom AOI report



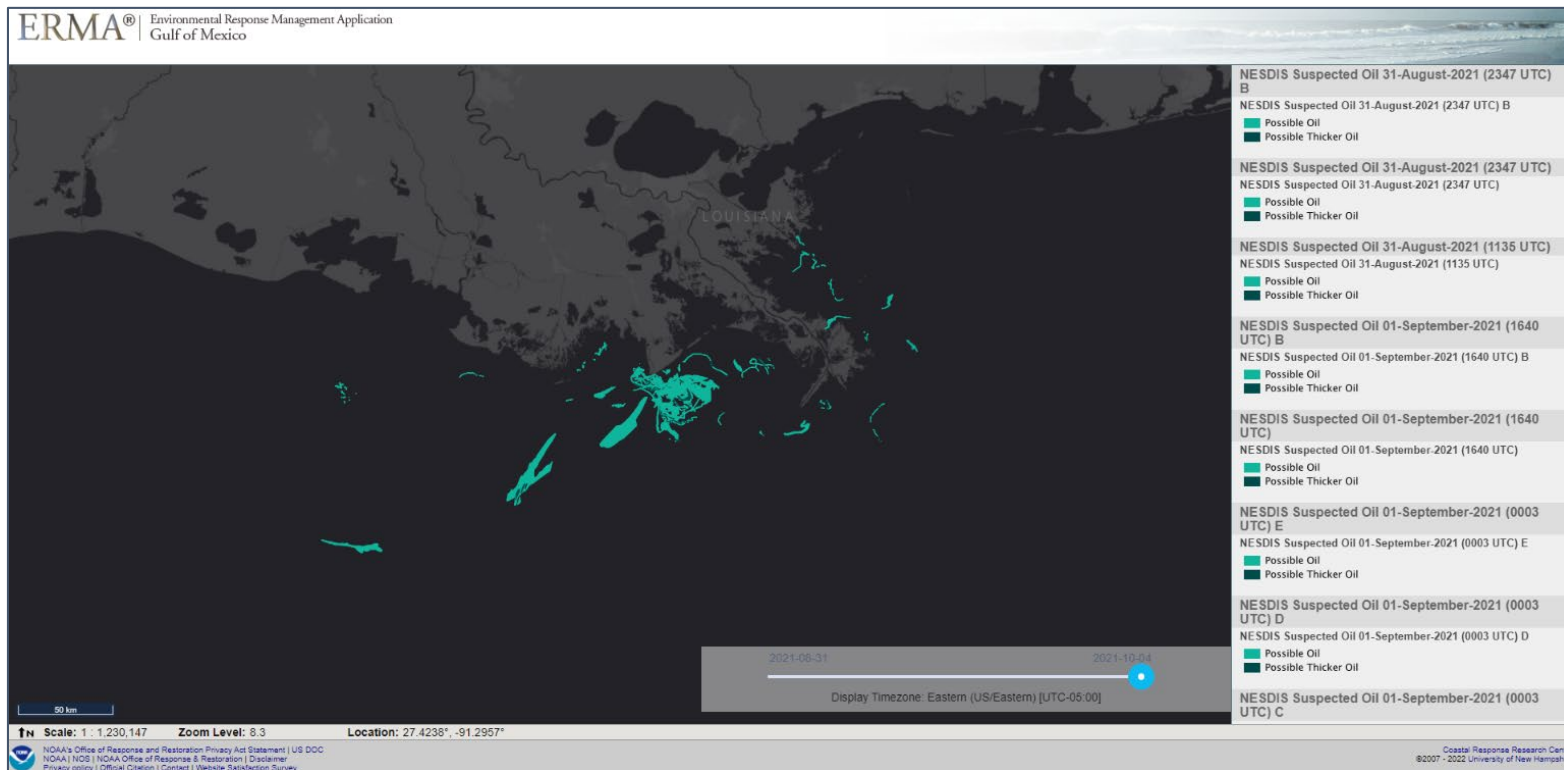
# Environmental Sensitive Index (ESI)



# Geographic Response Strategies



# Marine Pollution Surveillance Reports (MPSR)



# Spill Response

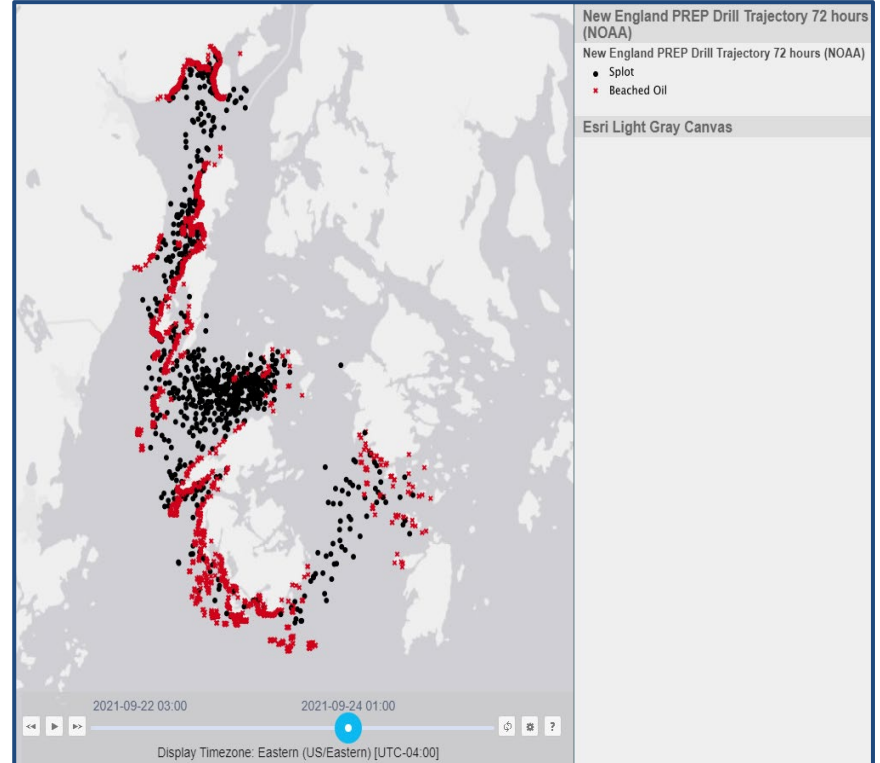
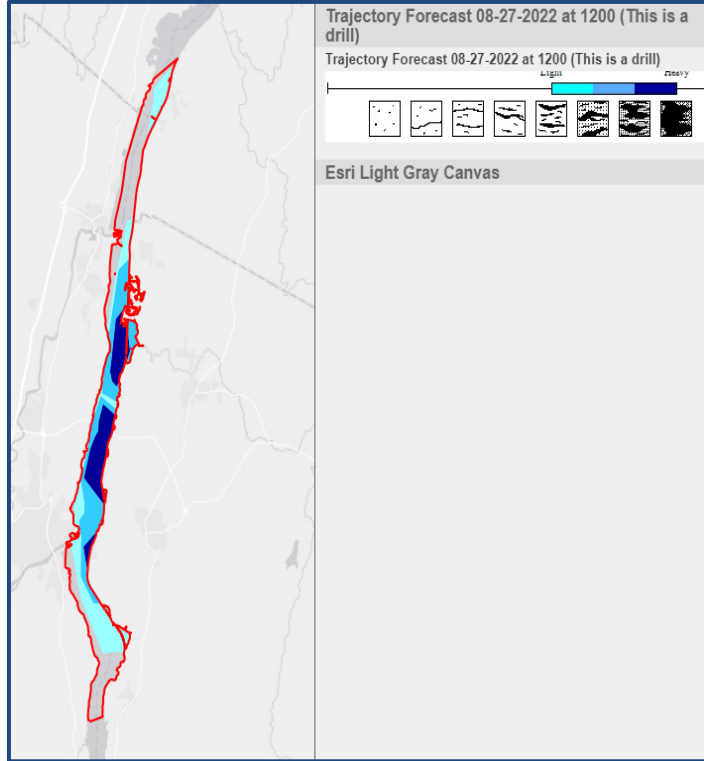
ERMA® Environmental Response Management Application  
Atlantic



[Link](#)

Scale: 1 : 60,743,805    Zoom Level: 2.7    Location: -46.0118°, 57.2832°

# Trajectories



[Link](#)

# Overflights

**ERMA** Environmental Response Management Application  
Southwest

Information Help Recent Data Admin Upload Incident Search Layers, Folders, and Bookmarks Geographic Search Change Password Logout

Layers Legend Query Tools AOI Labels Zoom Download Print

**Refugio Incident Refugio State Beach at ...**

**NOAA Overflight Photos Refugio Incident**

Refugio Incident Refugio State Beach at ...  
Photo taken at 5/29/2015 8:45:54 AM

W 119° 55.571'  
N 34° 24.033'

5/29/2015 8:45:54 AM

2 km  
1 mi

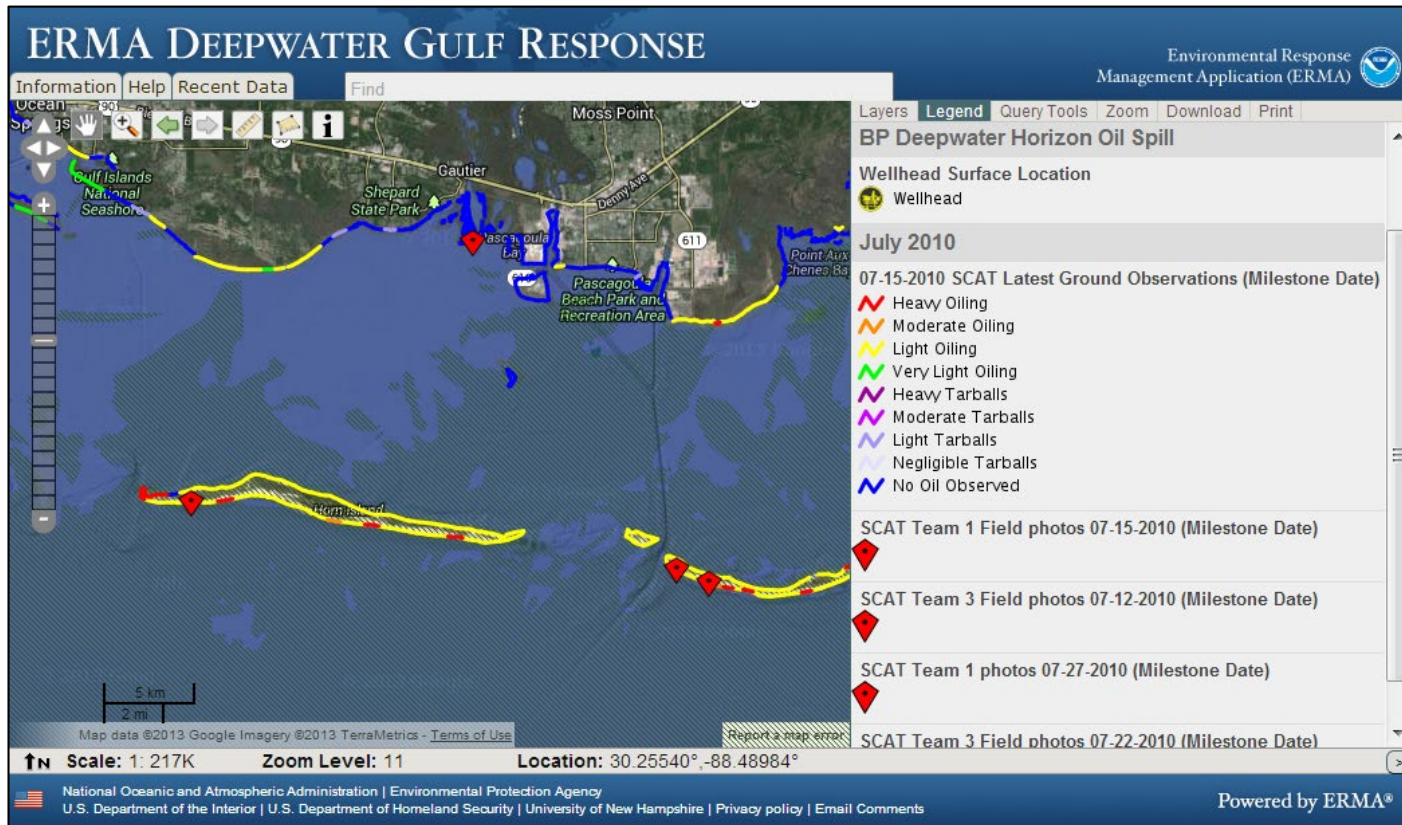
Scale: 1 : 89K Zoom Level: 12 Location: 34.39866°,-119.91746°

clean

US DOC | NOAA | NOS | NOAA Office of Response & Restoration  
<https://erma.noaa.gov/layerfiles/12404/locations/6122/6364/6364.jpg>

Coastal Response Research Center  
©2007 - 2015 University of New Hampshire

# SCAT



[Link](#)

# SCAT

## ERMA DEEPWATER GULF RESPONSE

Environmental Response Management Application (ERMA) 

Information Help Recent Data Find

Ocean Spills

Gulf Islands National Seashore

SCAT

SCAT Team 1 Mobile Sector  
Pettibois Island, MS

Map data ©2013 Google Images

Scale: 1: 217K

N 30°12'14"  
W 088°29'09"

07/27/2010

Powered by ERMA®

Environmental Response Management Application (ERMA)

load Print

ons (Milestone Date)

estone Date)

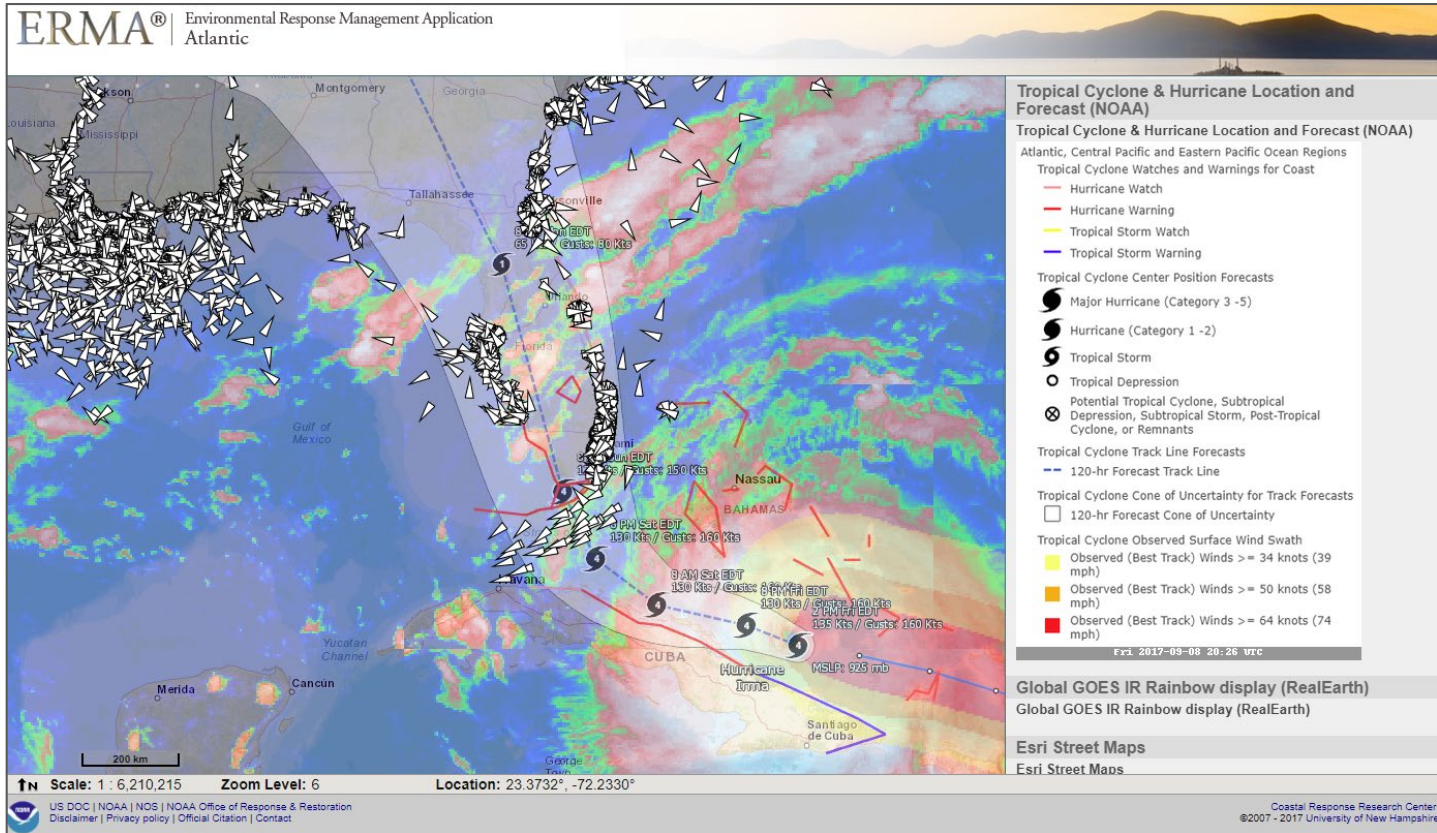
estone Date)

e Date)

estone Date)



# Vessel Tracking



# Field Photos

**ERMA®** | Environmental Response Management Application  
Caribbean

**USCG Field Assessment Photos Hurricane Maria**

W 65° 47.796' N 18° 04.641' 10/6/2017 7:57:57 AM 18.4531°, -65.8444°

**USCG Field Photos 10-03-2017**  
USCG Field Photos 10-03-2017

**USCG Field Photos 10-01-2017**  
USCG Field Photos 10-01-2017

**USCG Field Photos 10-05-2017**  
USCG Field Photos 10-05-2017

**USCG Field Photos 10-04-2017**  
USCG Field Photos 10-04-2017

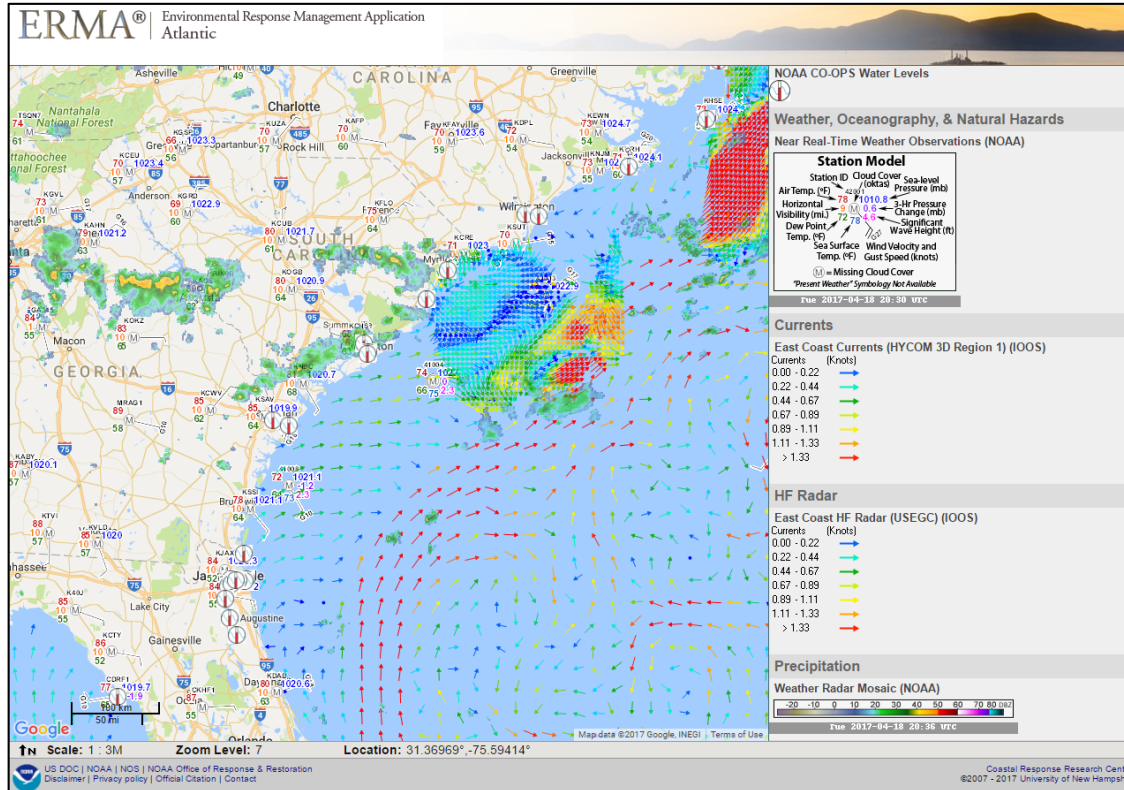
**USCG Field Photos 10-06-2017**  
USCG Field Photos 10-06-2017

**USCG Field Photos 10-07-2017**  
USCG Field Photos 10-07-2017

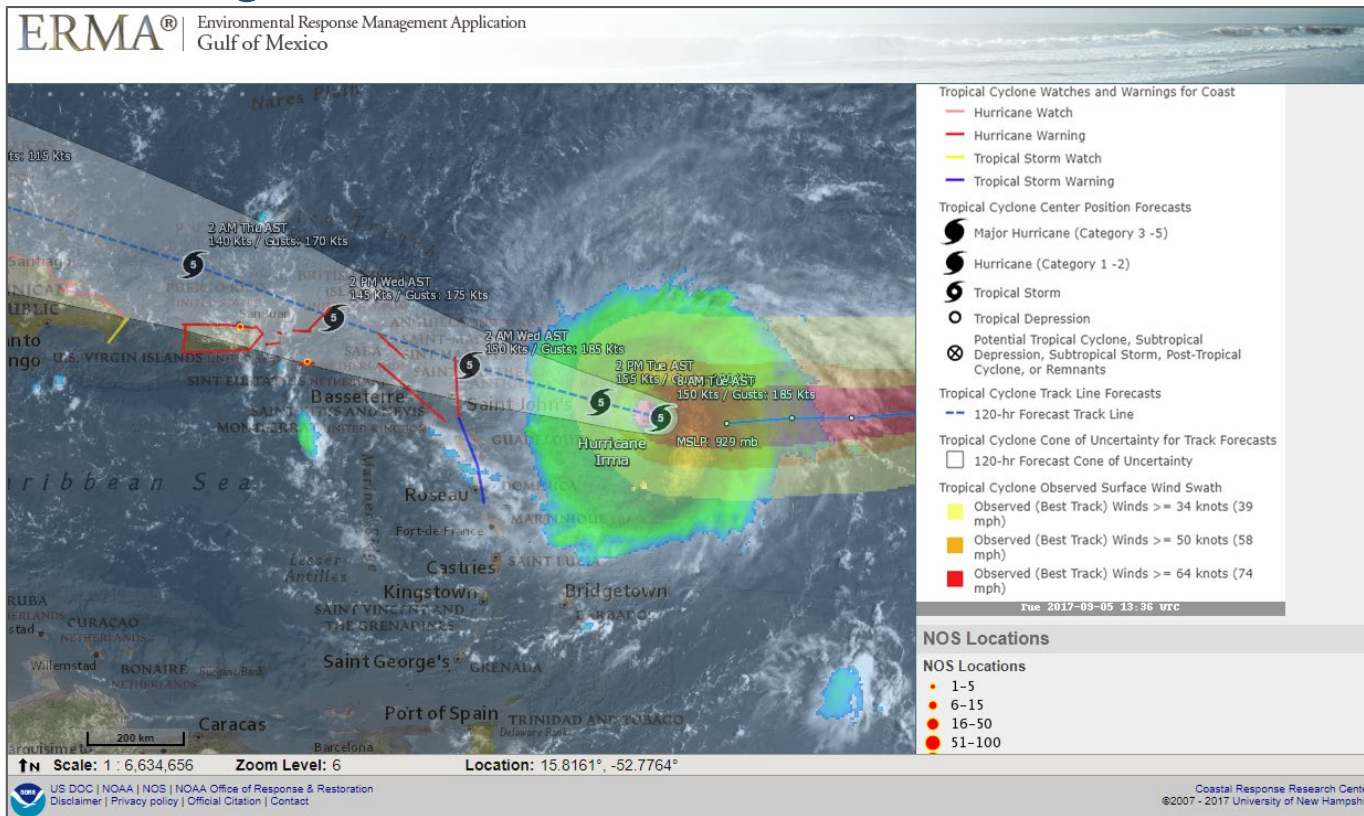
US DOC | NOAA | NOS | NOAA Office of Response & Restoration  
Disclaimer | Privacy policy | Official Citation | Contact

Coastal Response Research Center  
©2007 - 2017 University of New Hampshire

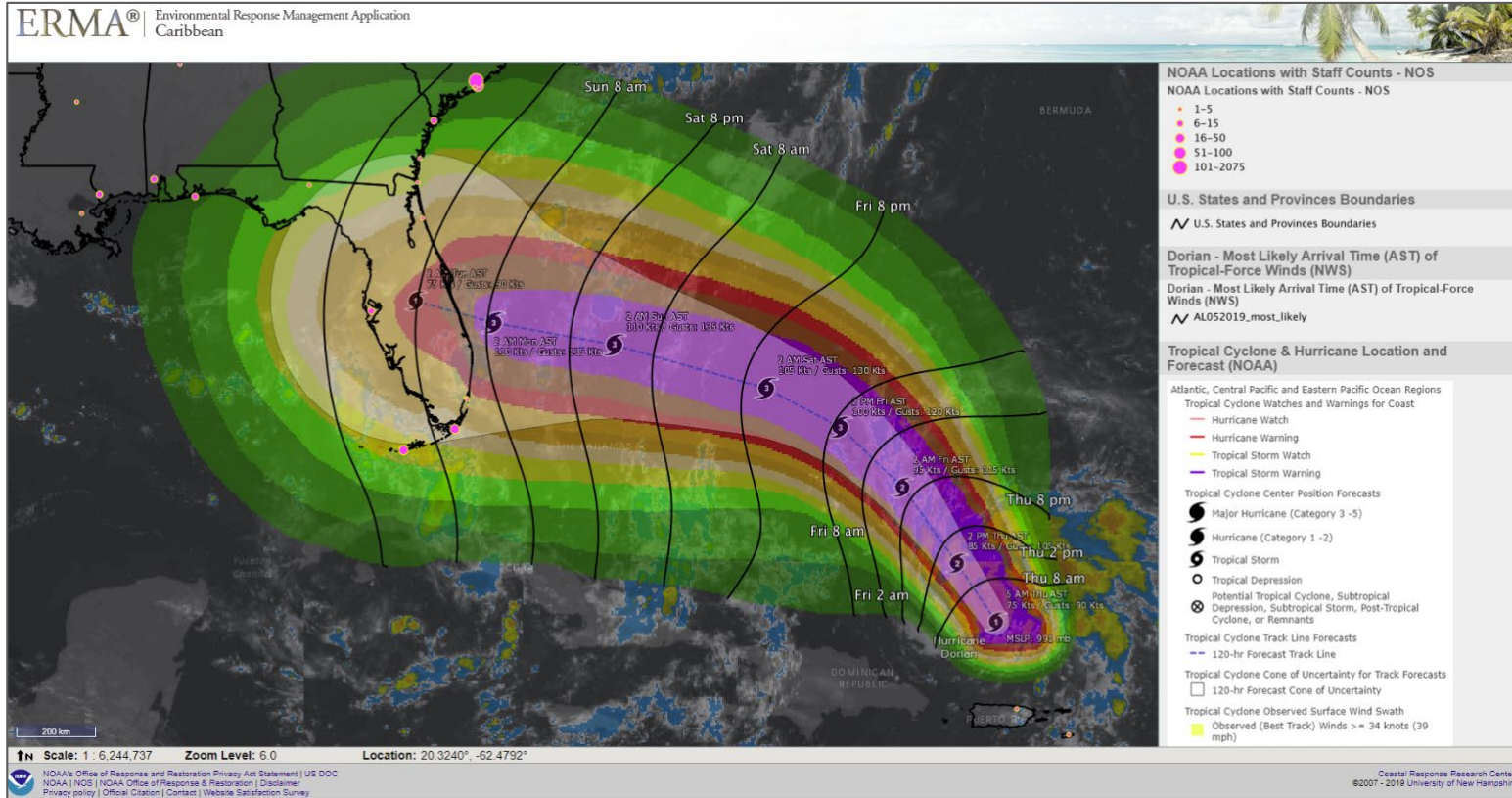
# Near Real Time Weather



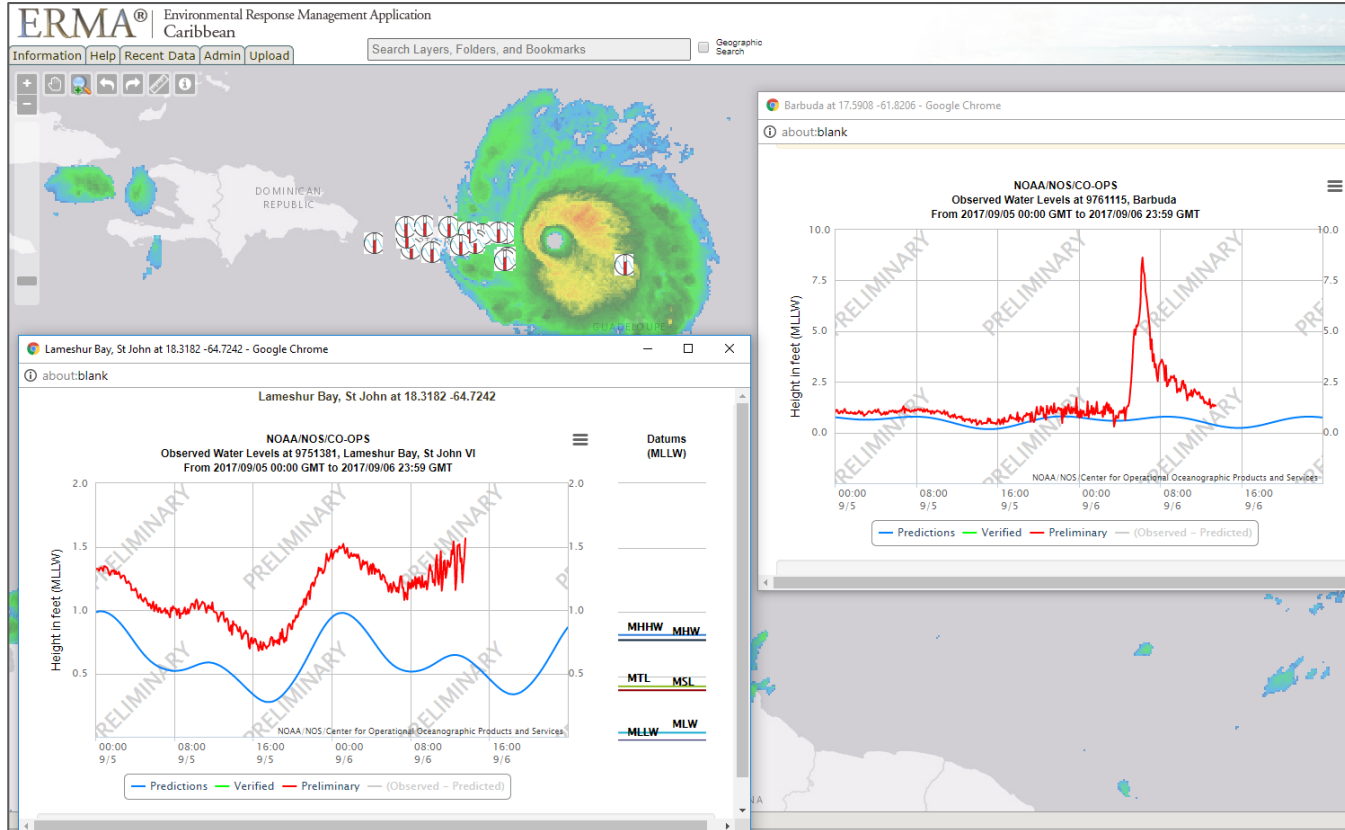
# Storm Tracking



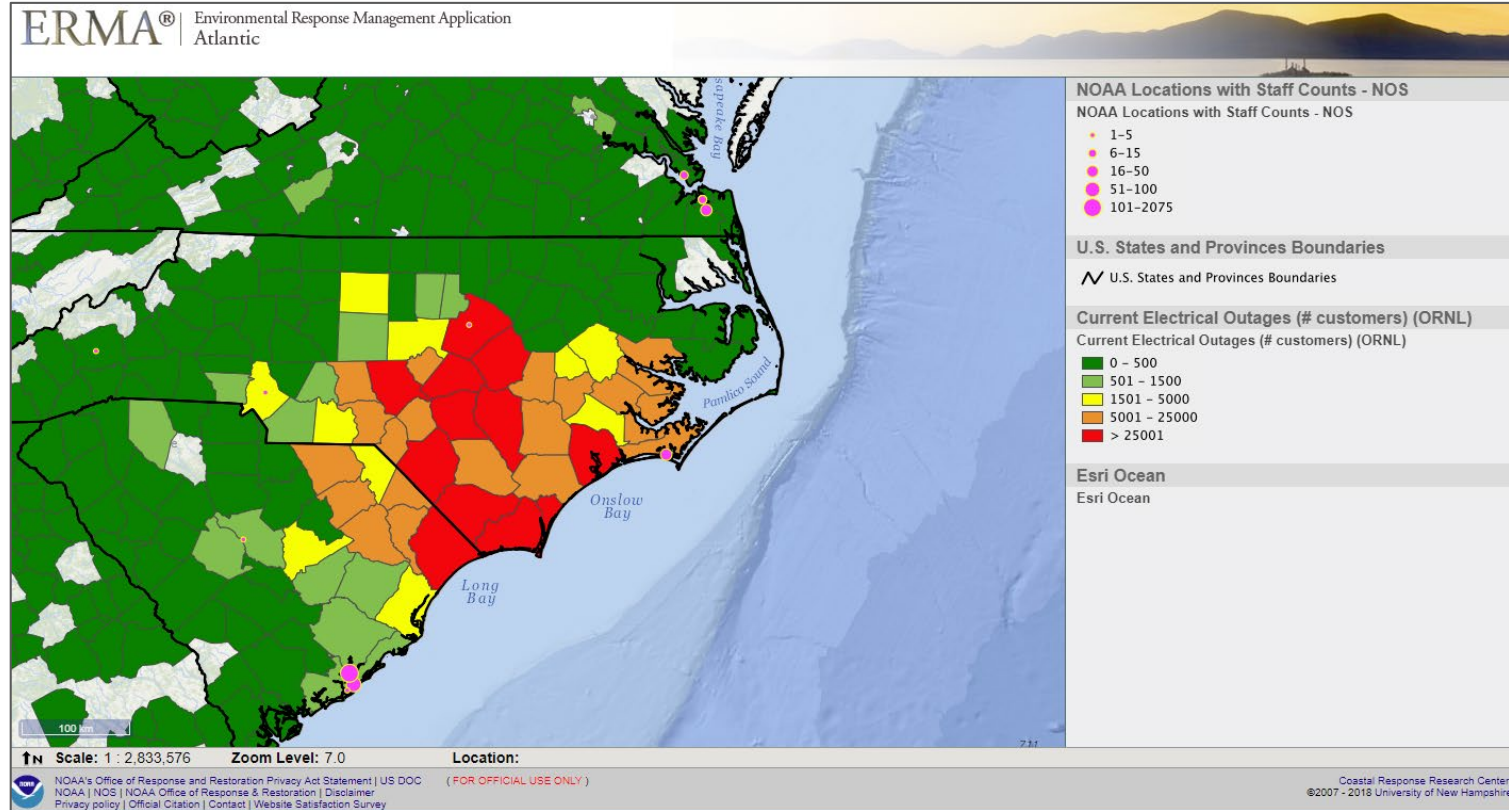
# Arrival Times of Winds



# Water Levels



# Power Outages



# Power Outages and Traffic Cams

**ERMA®** Environmental Response Management Application  
Gulf of Mexico

**Esri Light Gray Canvas**

**Esri Light Gray Canvas**

**NOAA Locations with Staff Counts**

**NOAA Locations with Staff Counts**

- 1-5
- 6-15
- 16-50
- 51-100
- 101-2700

**Houston Power Outages (CenterPoint Energy)**

**Houston Power Outages (CenterPoint Energy)**

- 1 - 10 customers without power
- 11 - 100 customers without power
- 101 - 300 customers without power
- More than 300 customers without power

**Houston Traffic Webcams (Houston TranStar)**

**Houston Traffic Webcams (Houston TranStar)**

**Houston Traffic Webcams (Houston TranStar)**

Houston TranStar Roadw... x

https://traffic.houstontranstar.c

For quick access, place your bookmarks here on the bookmar...

**Houston TranStar Camera**

Beltway 8-South at Bellfort

SAM HOU/ENB @ BELLFORT

HOUSTON TRANSTAR

08/28/2017 14:08:45 1160

Copyright © 2017 Houston TranStar

Close Refresh

Scale: 1 : 93,988 Zoom Lev

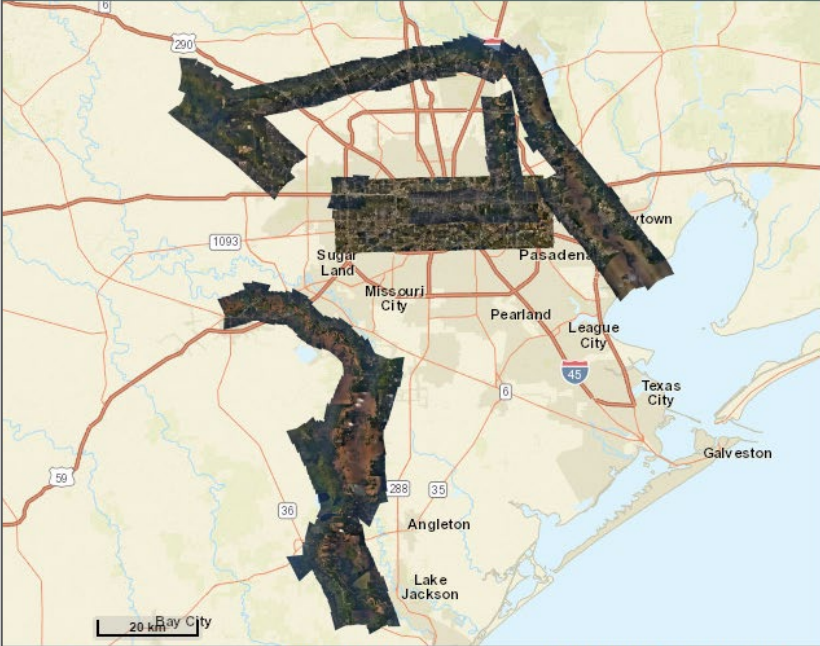
US DOC | NOAA | NOS | NOAA Office of Response  
Disclaimer | Privacy policy | Official Citation | Contact

Coastal Response Research Center  
©2007 - 2017 University of New Hampshire



# NGS Response Aerial Photography

**ERMA®** Environmental Response Management Application  
Gulf of Mexico



**Esri Street Maps**  
Esri Street Maps  
Aerial Imagery 2017-08-31b (NOAA NGS)  
Aerial Imagery 2017-08-31b (NOAA NGS)

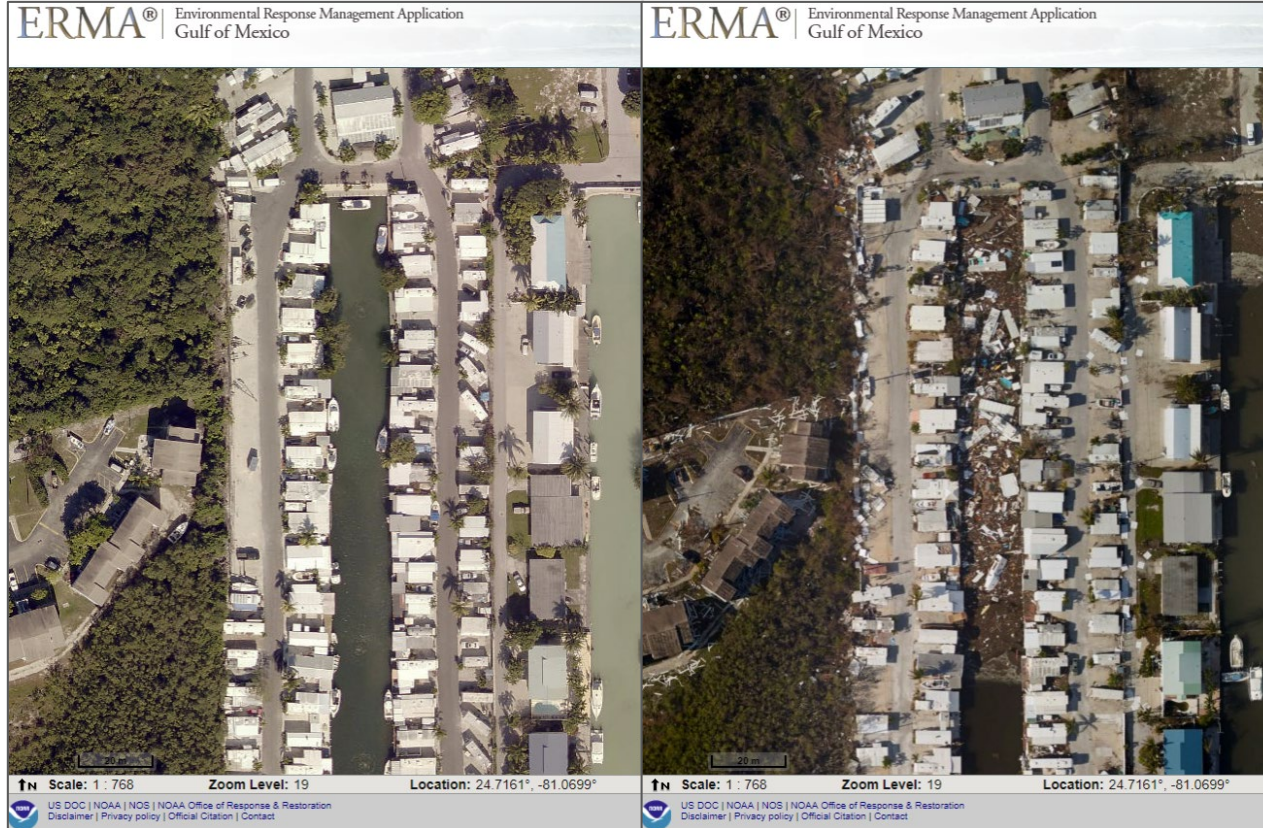
**Aerial Imagery 2017-08-31a (NOAA NGS)**  
Aerial Imagery 2017-08-31a (NOAA NGS)

↑N Scale: 1 : 753,135    Zoom Level: 9    Location: 29.4774°, -94.5800°

US DOC | NOAA | NOS | NOAA Office of Response & Restoration  
Disclaimer | Privacy policy | Official Citation | Contact

Coastal Response Research Center  
©2007 - 2017 University of New Hampshire

# NGS Response Aerial Photography



# Other Imagery Sources

ERMA® Environmental Response Management Application  
Gulf of Mexico



NICB Hurricane Laura Imagery (Geointel)  
NICB Hurricane Laura Imagery (Geointel)

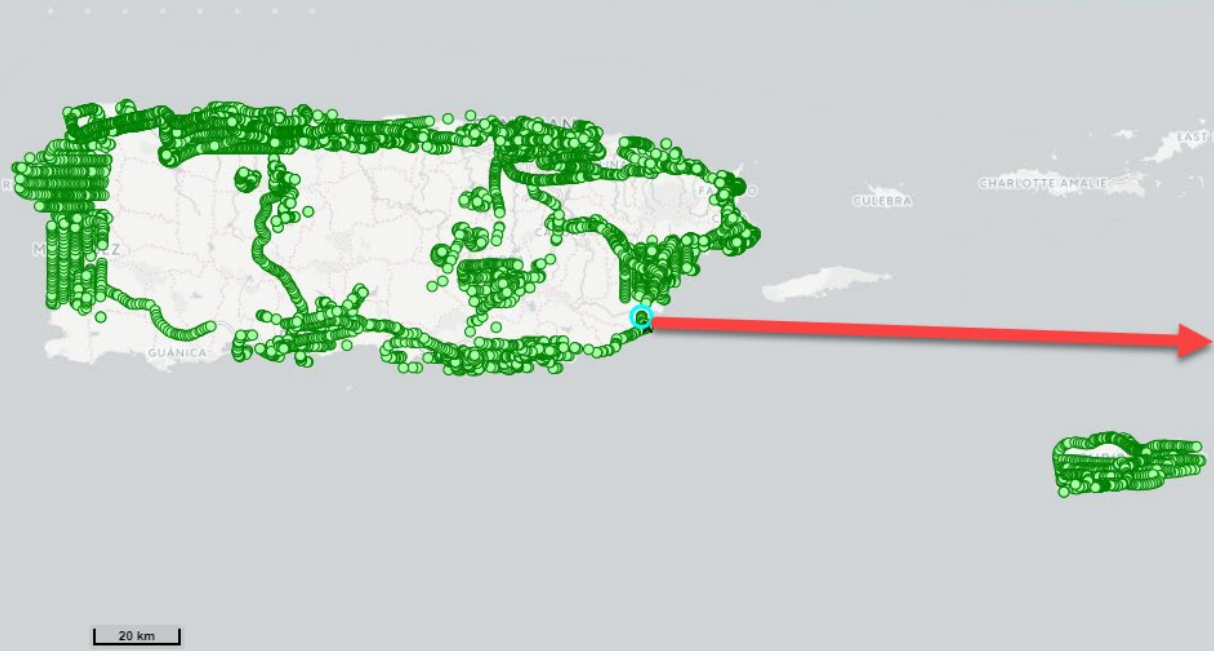
Esri National Geographic

200 m

Scale: 1 : 8,304    Zoom Level: 15.5    Location: 29.7504°, -93.8596°

# Civil Air Patrol

**ERMA®** | Environmental Response Management Application  
Caribbean



**Civil Air Patrol Photos for Hurricane Maria (CAP)**  
Civil Air Patrol Photos for Hurricane Maria (CAP)  
● Civil Air Patrol Photos for Hurricane Maria (CAP)

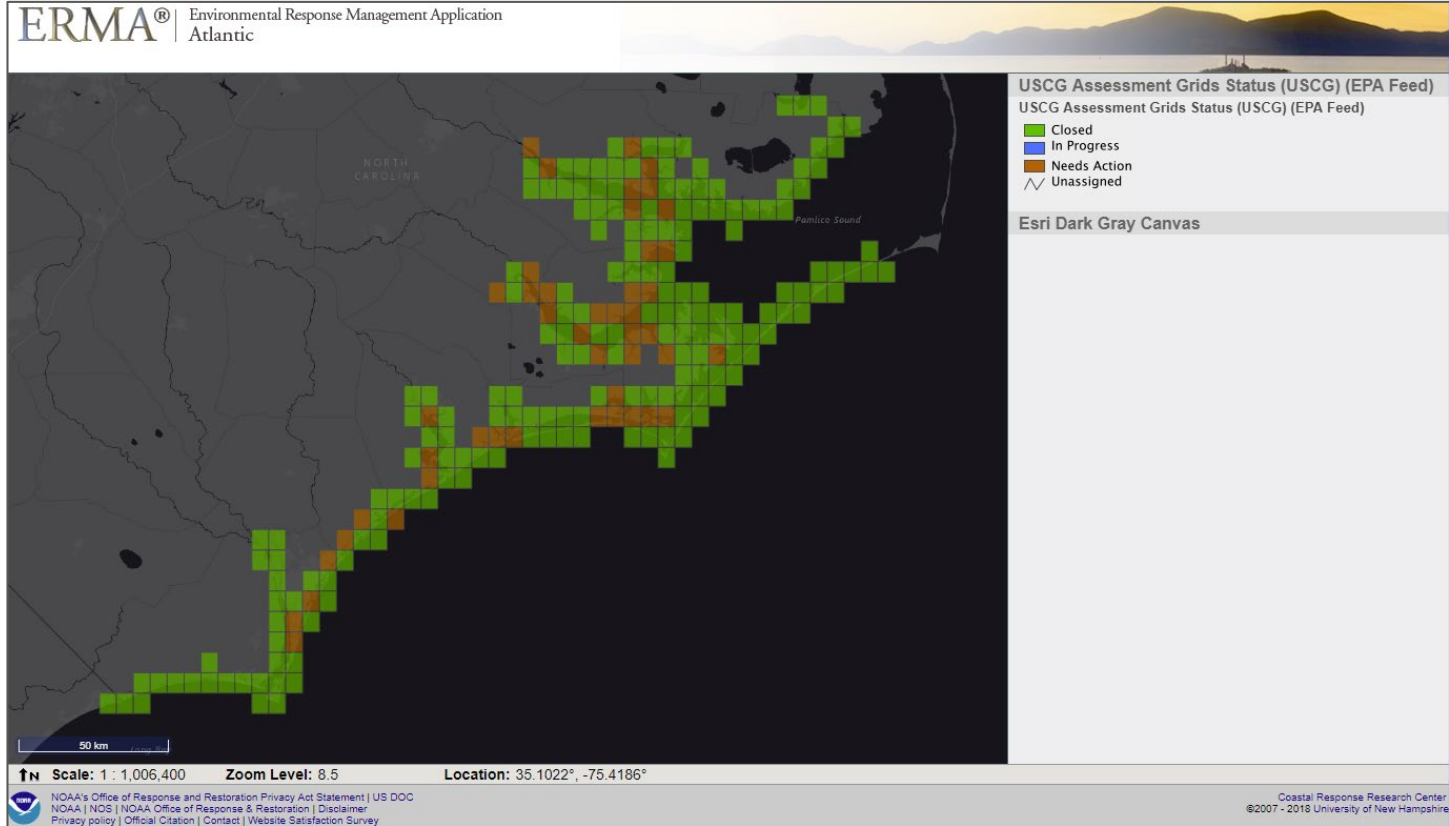
**OpenStreetMap Light Gray (CARTO)**  
OpenStreetMap Light Gray (CARTO)

Scale: 1 : 882,296    Zoom Level: 8.9000000000000000    Location: 18.2965°, -64.5829°

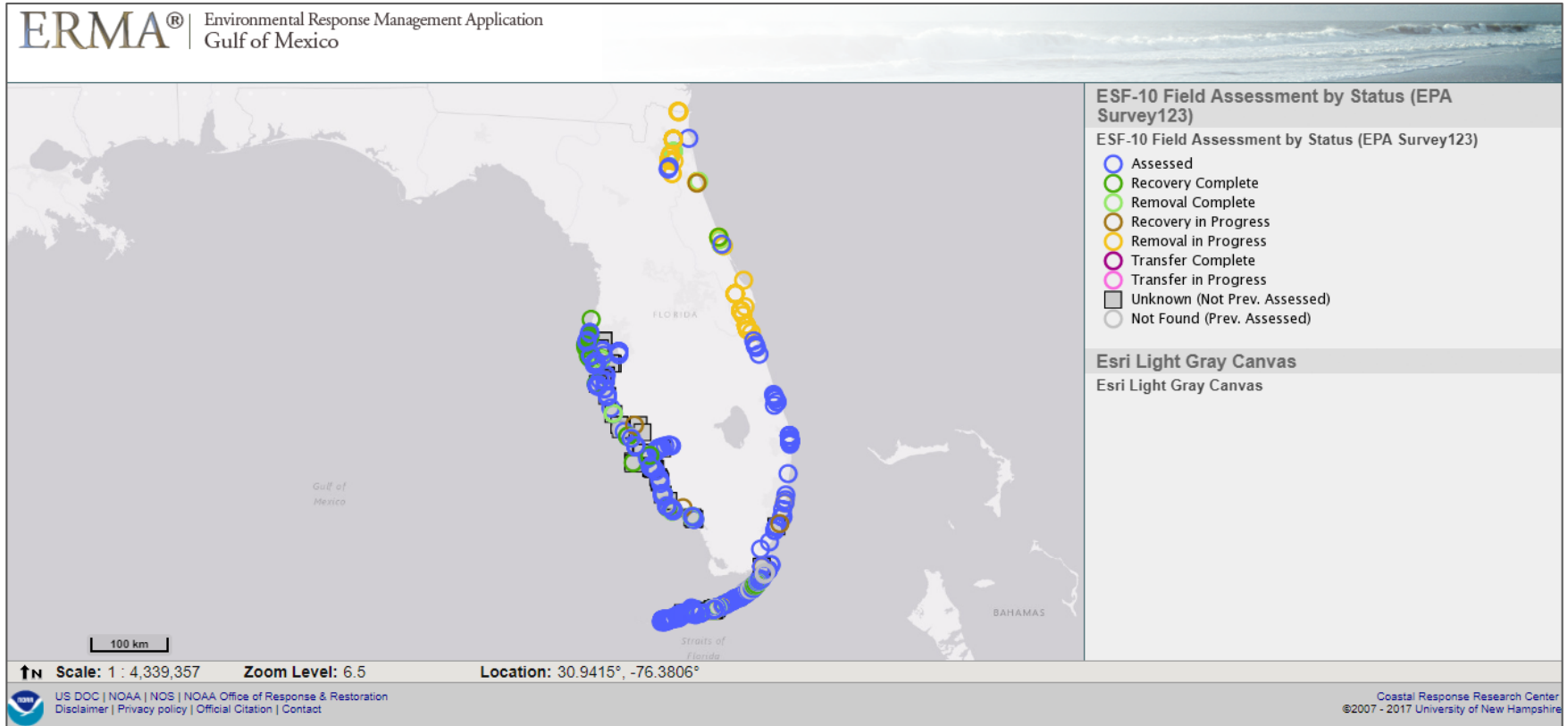
US DOC | NOAA | NOS | NOAA Office of Response & Restoration  
Disclaimer | Privacy policy | Official Citation | Contact

Coastal Response Research Center  
©2007 - 2017 University of New Hampshire

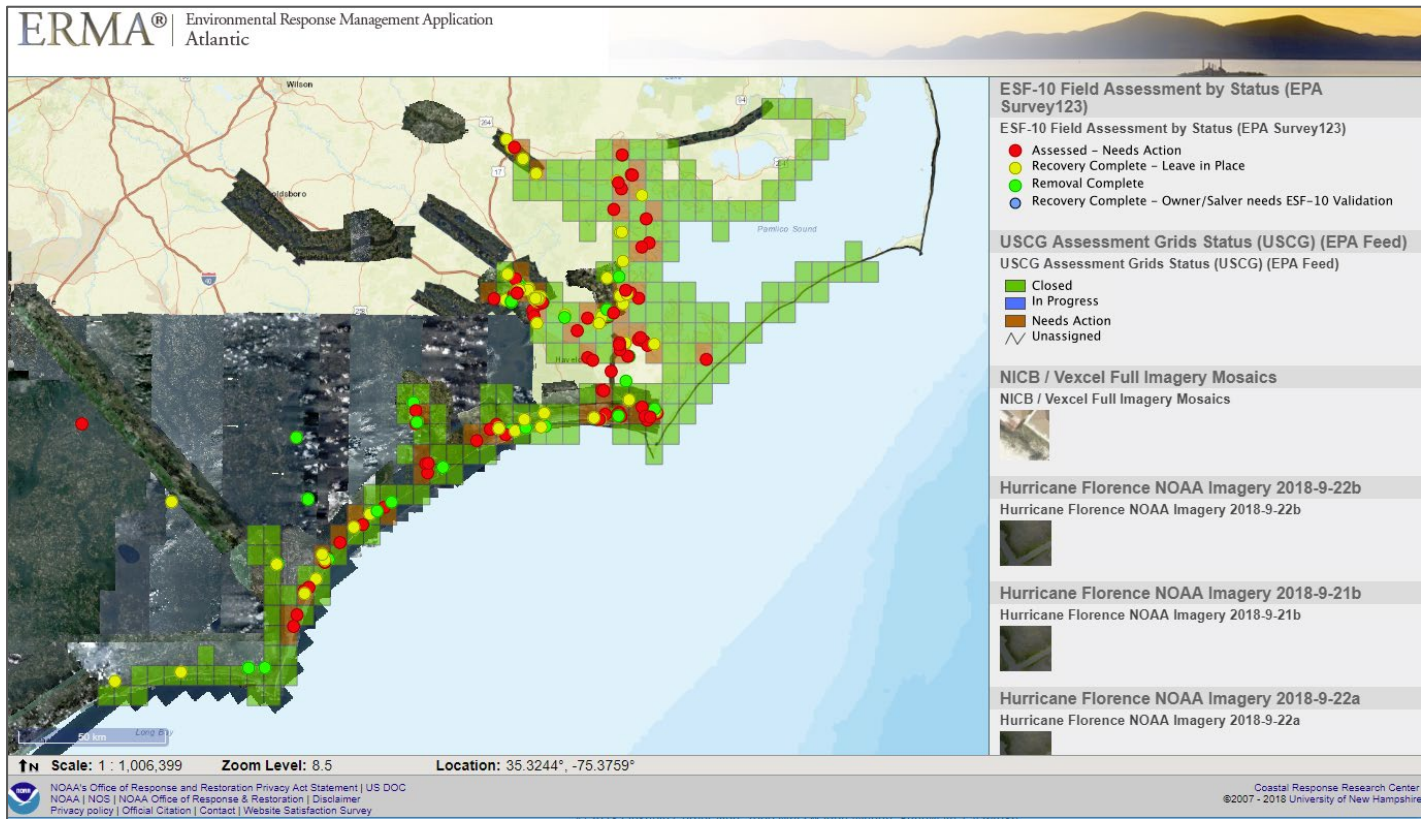
# Operational Grids



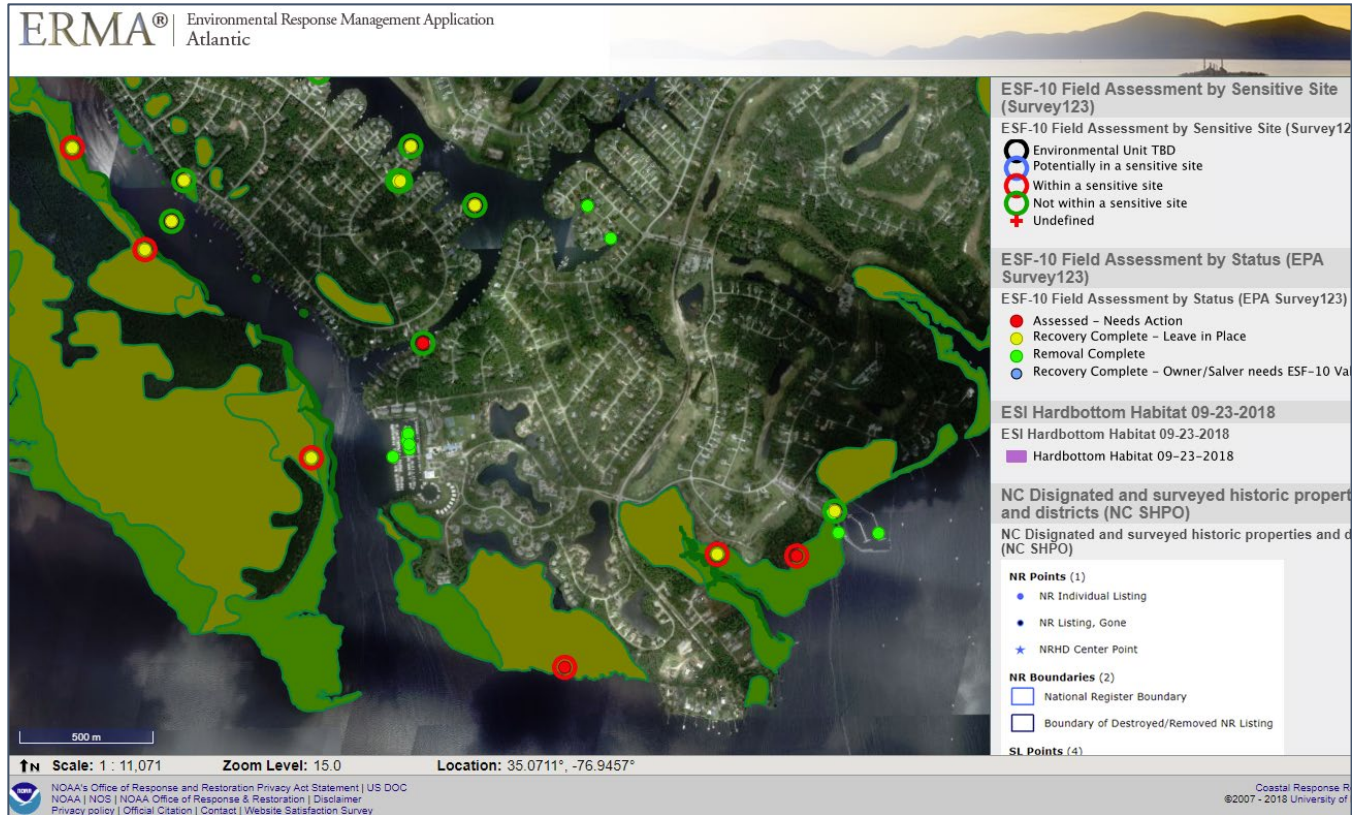
# ESF 10 Targets



# Operational Grids with Targets



# ESF-10 with Sensitive Sites





# ERMA Tools - Dashboards

### Hurricane Ida Pollution Targets

Total Targets	Threat - USCG Ops	Commercial vs. Non-Commercial Vessels	
2,484	79	commercial	21
		commercial_fishing	224
		recreational	382
		recreational	329
		unknown	204
Threat - Monitor	Not Assessed		
644	273		
Target Not Found	No Action - LIP	Target Removal Complete	USCG Action Complete LIP
319	832	80	257

#### Debris Targets in View

2 of 2,478

- Photo Link
- Unique ID
- Navigation Hazard
- Assessment Type
- USCG Unit
- NRC Number if Applicable
- Date of Updated Assessment
- Updated Assessment Type
- Updated Assessment Team Lead
- Target Type
- ESF10

### Hurricane Ida Targets

**Hx Ida All Targets by Status**

Hx Ida All Targets by Status

- 1. Not Assessed
- 2. Assessed - Threat USCG Ops
- 3. Assessed - Threat (Monitor)
- 4. Target Not Found
- 5. No Action LIP (final action)
- 6. USCG Action Complete LIP (final action)
- 7. Target Removal Complete (final action)

**Hx Ida All Targets by Vessel Type**

Hx Ida All Targets by Vessel Type

- Commercial
- Recreational
- Unknown

Esri Dark Gray Canvas

[Link](#)

Scale: 1 : 866,129    Zoom Level: 8.8    Location: 29.4750°, -88.2960°

# ERMA Tools - Query and Save Data

**ERMA Example**

**ERMA**® Environmental Response Management Application  
Gulf of Mexico

Information Help Recent Data Dashboards Admin Search Layers, Folders, and Bookmarks Geographic Search

Layers Legend Draw **Query Tools** Zoom Download Print

**Query Tools**

**Step 1: Create New or Use Existing Shapes:**

Create new shapes by selecting the Create Polygon button. Draw the polygon on the map by clicking vertices with the mouse. Double click to end drawing.

To use an existing shape continue to Step 2.

All shapes drawn on the map will be used by the Layer Query by Polygon Tool and the ESI Query Tool. The IPaC Query Tool can only use one polygon. If you want run the query with one shape, delete the remaining shapes. You do not need to select a shape for it to be run in the query.

Create Polygon Delete Selected Delete All

Show WKT

**Step 2: Select a Query Tool:**

**ERMA Layer Query by Polygon Tool**

The Query by Polygon Tool allows queries against all layers hosted internally by ERMA (ex. shapefiles). It does not support externally hosted layers (ex. real time conditions, DIVER-linked queries). Depending on the host of the data you may receive a "Data Not Available" message when the query is run. To check the data's host open the layer's Metadata window.

Select all features that touch these polygons (Intersect)

Select only features COMPLETELY covered by these polygons

Run ERMA Query By Shape

**NOAA ESI Query Tool**

ESI maps provide a summary of coastal resources that are at risk if an oil spill occurs. This includes biological resources, sensitive shorelines, and human-use resources.

Run ESI Query

**U.S. Fish and Wildlife Service IPaC Query Tool**

IPaC provides information about U.S. Fish and Wildlife Service trust resources for your selected area, including threatened and endangered species. It also provides recommended conservation measures tailored to your project activities and trust resource species.

IPaC accepts ONE polygon. It does not currently support points or line segments. If you need to define your project location as a point or

clean

Scale: 1 : 497,374 Zoom Level: 9.6 Location: 29.3230°, -88.3864°

NOAA's Office of Response and Restoration Privacy Act Statement | US DOC  
NOAA | NOS | NOAA Office of Response & Restoration | Disclaimer  
Privacy policy | Official Citation | Contact | Website Satisfaction Survey

(PRELIMINARY DATA - SUBJECT TO CHANGES AFTER VALIDATION OR VERIFICATION)

Coastal Resource Research Center  
©2007 - 2022 University of New Hampshire

# ERMA Tools - Query and Save Data

Summary Layer 47843Rows 1 to 100 of 110 records

ilution	dischargeamount	dischargeunits	ndrp_condition	status_ida	substatus_ida	sensitivehabitat	nofi	nofi_date	nofa	nofa_date	uav...	
				<div style="border: 1px solid gray; padding: 5px;"><p>Filter choices... <span>X</span></p><p><input checked="" type="checkbox"/> Select All</p><p><input checked="" type="checkbox"/> 3. Assessed - Threat (Monitor)</p><p><input checked="" type="checkbox"/> 4. Assessed - Target Not Found</p><p><input checked="" type="checkbox"/> 5. No USCG Action - Leave in Place (final action)</p><p><input checked="" type="checkbox"/> 6. USCG Action Complete - Leave in Place (final action)</p><p><input checked="" type="checkbox"/> 7. Target Removal Complete (final action)</p><p style="text-align: right;"><span>OK</span> <span>Reset</span> <span>Close</span></p></div>								
						yes						
						yes						
						no						
						no						
						yes						
						no						
						potential Futi	no					
						potential Futi	no					
						no						
						5. No USCG Action - Lei	no					
						5. No USCG Action - Lei	no					
						5. No USCG Action - Lei	no					
						5. No USCG Action - Lei	no					
						5. No USCG Action - Lei: 3.3 No RP/Potential Futi	no					
						5. No USCG Action - Lei: 3.3 No RP/Potential Futi	no					
						5. No USCG Action - Lei: 3.3 No RP/Potential Futi	no					
						5. No USCG Action - Lei: 3.3 No RP/Potential Futi	no					
				UNK		5. No USCG Action - Lei	no					
						5. No USCG Action - Lei	no					
						5. No USCG Action - Lei	no					
						5. No USCG Action - Lei	no					
						5. No USCG Action - Lei	no					
						5. No USCG Action - Lei	no					
						5. No USCG Action - Lei	no					
						5. No USCG Action - Lei	no					

- Columns
- Clear All Filters
- Refresh
- View Summary Stats
- Create Temporary Layer

Navigation arrows and scrollbar at the bottom of the interface.

# ERMA Tools - Query and Save Data

Summary Layer 47843

Layer Name	Layer ID	Result Count	Comments	Information	Export
Hx Ida All Targets by Status	47843	110		<a href="#">Information</a>	<a href="#">Export</a>

Some or all of the layers you have selected may be **restricted** and **not publicly accessible**.  
By exporting data from ERMA, you are agreeing to take all reasonable precautions to prevent unauthorized third parties or persons from accessing, using, or redisplaying the data in a public setting or view.

Export

**Filters**

- Export with spatial and field filters applied.
- Export with only spatial filters applied.

**File Format**

- Shapefile (column names truncated to 10 characters)
- Shapefile (column names truncated to 10 characters)**
- GeoJSON
- Comma Separated Values (no geometries)
- MS Excel Format (no geometries)

**Terms of Use**

# ERMA Tools - Add Map Data

**Add Map Data:**  
 To add your own data to ERMA's Map select the data format from the options below. A temporary layer will appear in the "My Map Data" folder within the table of contents after it has been successfully loaded. Data added to the map will not be stored. Upon closing the browser, the data layers may be removed.

[Add File Data](#)
[Add ArcREST Data](#)
[Add WMS Data](#)

You can browse or drop files in the drop zone for the following file types:

- A Shapefile (data must be uploaded with one layer per zip file. Each layer zip file should contain all the component files of the shapefile).
- A CSV or Excel file (must contain a header row of column names and spatial data labeled with some form of 'lat','lon' or 'latitude','longitude').
- A GPX File (.gpx) or KML (.kml).
- A GeoJSON File (.geojson or .json). Assumed to be in Geo coordinates (EPSG 4326)
- A Geo Tiff File (.tiff or .tif). Assumed to be in Geo coordinates (EPSG 4326)

Note: files larger than 1mb may cause Microsoft Edge to become slow or unresponsive.

[Choose File\(s\)](#)

Title	Date Created
ESI_Atlasses_Index	5/05/22 12:24 PM (-0400)

**Map Layers Panel:**

- Background Layers
- St. Simons Sound Incident
- Admin Boundaries & Reference Features
- Bathymetry & Hydrology
- Environmental Quality & Monitoring
- Imagery & Remote Sensing
- Natural Resources, Habitats, & Managed Areas
- Navigation & Marine Infrastructure
- Public Safety & Infrastructure
- Response Planning
- Weather, Oceanography, & Natural Hazards
- Incident Response
- Marine Debris
- Natural Resource Damage Assessments (NRDA)
- Restoration
- Exercises & Training
- ERMA Drawings
- Temporary Layers
- My Map Data**
  - ESI\_Atlasses\_Index

# ERMA Tools - Draw

**ERMA®** Environmental Response Management Application  
Atlantic

Information Help Recent Data Dashboards Admin

Search Layers, Folders, and Bookmarks

Geographic Search

**Evacuation Order (2000 yard radius)**

Layers Legend Draw Query Tools Zoom Download Print

**View Existing Drawings** New Drawing

My Drawings + Shared Drawings

Show only drawings in the Atlantic region

Search - \* and ? wildcards may be used

Displaying 76 drawings

Sher...	Name	Region...
<input checked="" type="checkbox"/>	M/V Pacific Huron Grounding Saint L...	greatlak...
<input checked="" type="checkbox"/>	Bulk Carrier Jupiter #6 Spill, Norfolk, ...	atlantic
<input checked="" type="checkbox"/>	S/V Liberty Star, York, ME (2017-1208)	atlantic
<input checked="" type="checkbox"/>	FV Anne Row, Gloucester, MA (2017-...	atlantic
<input checked="" type="checkbox"/>	MD SHPO NRHP Boom SKIPJACK ...	atlantic
<input checked="" type="checkbox"/>	2000 yd evacuation zone	atlantic

zoom to extent edit copy delete unshare add to query tools tab

Name	2000 yd evacuation zone
Creator	Robb Wright
Description	2000 yd evacuation zone
Profile Name	Drawing
Create Date	Oct 28, 2019 8:58:13 AM
Layers	36548

Scale: 1 : 41,717    Zoom Level: 13.0    Location: 39.5712°, -76.0264°

NOAA's Office of Response and Restoration Privacy Act Statement | US DOC  
NOAA | NOS | NOAA Office of Response & Restoration | Disclaimer  
Privacy policy | Official Citation | Contact | Website Data/Action Survey

Coastal Response Research Center  
©2007 - 2022 University of New Hampshire

# ACKNOWLEDGMENTS

## NOAA:

- Michele Jacobi
- George Graettinger
- Ben Shorr
- Robb Wright

## Genwest:

- Michael Greer
- Adam Rotert
- Zach Winters-Staszak
- Kaitlin DeAeth
- George Marino

## Linker:

- Mathew Dorsey

## Development Team:

- Aaron Racicot, Z-Pulley
- Chander Ganesan, OTG
- Robert St. Lawrence, UNH
- Jerry Bower, Bowerson Services
- Mark Bonner, Cheetah Consulting, Inc.



# Questions?

