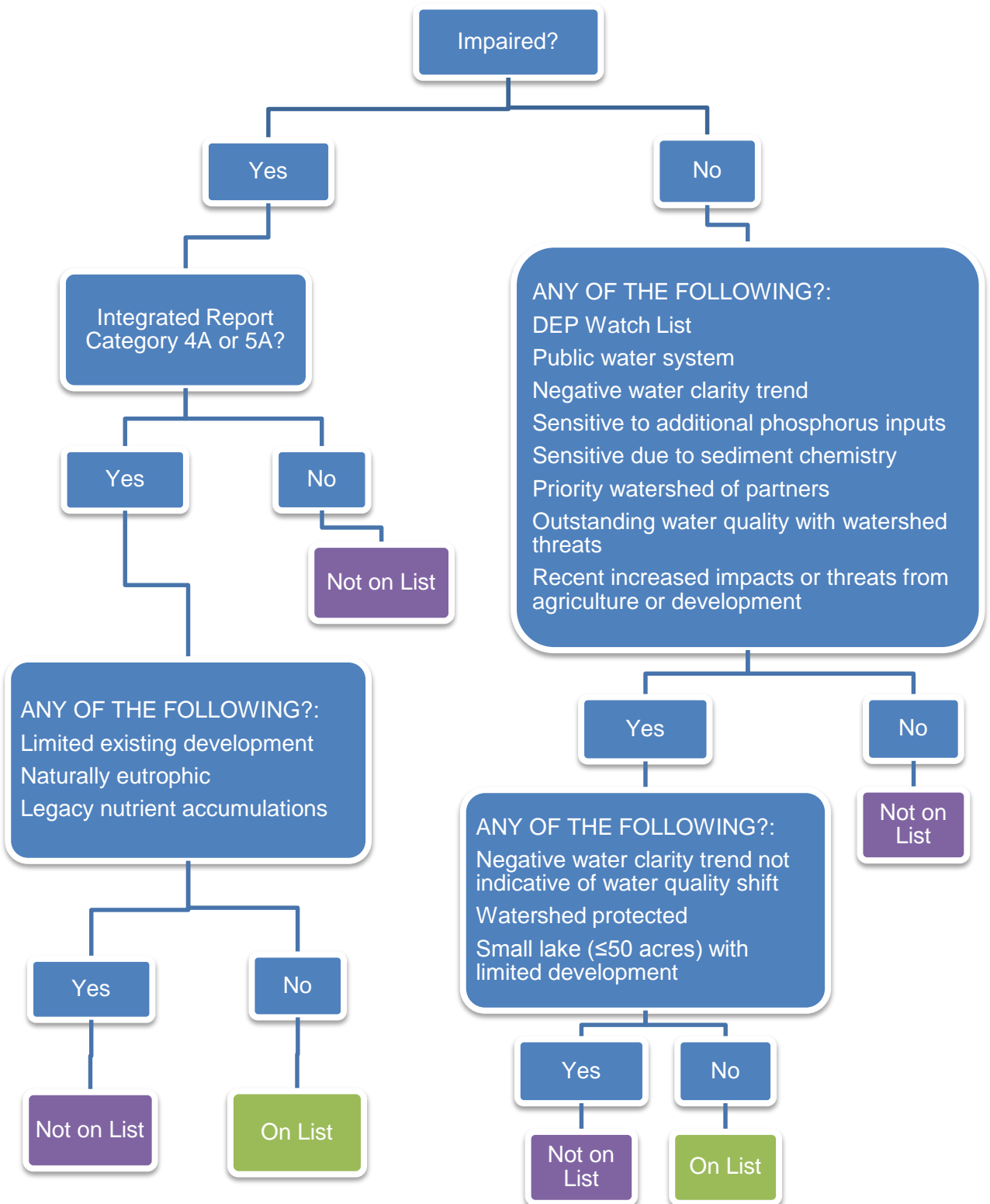
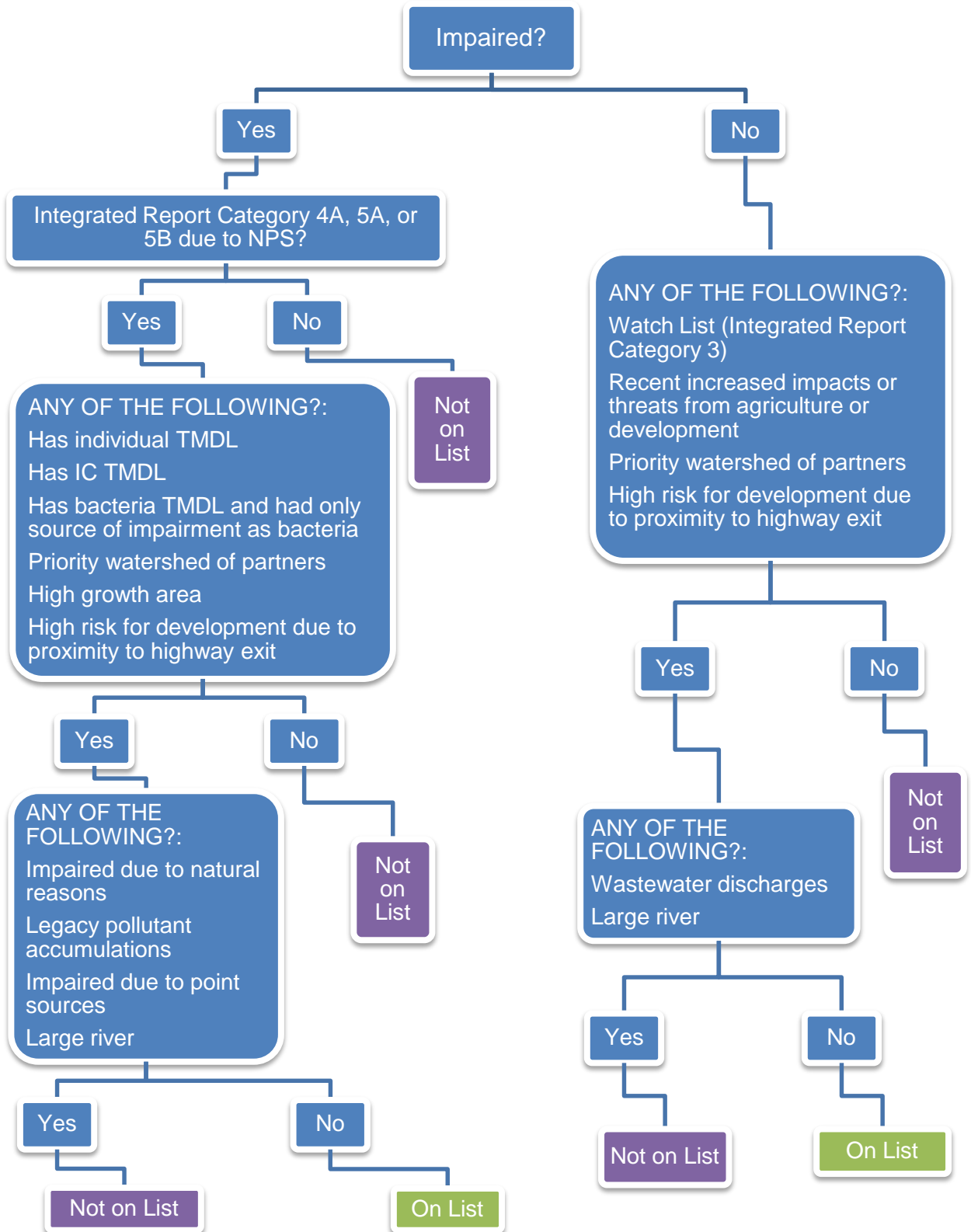


NPS Priority Watershed Decision Tree - LAKES



NPS Priority Watershed Decision Tree – STREAMS/RIVERS



NPS Priority Watershed Decision Tree – MARINE WATER

ANY OF THE FOLLOWING?:

Priority NPS-impacted watersheds of partners:

- Maine Department of Marine Resources (DMR) conditionally approved shellfish harvest areas
- Maine Healthy Beaches (MHB)
- Casco Bay Estuary Partnership (CBEP)
- Maine Municipal Separate Storm Sewer Program (MS4)

Documented negative water quality indicators

Yes

No

Not on List

ANY OF THE FOLLOWING?:

- Impaired due to natural reasons
- Legacy pollutant accumulations
- Large or exposed area with high flushing
- Point sources such as wastewater discharges
- Sources not clearly NPS
- Not fit with 319 program due to limited potential NPS sources

Yes

No

Not on List

On List