

Appendix A. Figures



Legend

- Study Area
- 20 Foot Contour
- Wetland Continuation Line
- Delineated Wetland (Winter)
- Delineated Stream (Winter)

N

0 125 250 Feet

Figure 3
Sheet 10 of 58
Aquatic Resource Survey Results
Western Maine Renewable Energy Project

Prepared For:

Prepared By: **TETRA TECH** Date: **05/2021**

Source: Esri, et. al., 2020; Tetra Tech, 2020-21; Western Maine Renewables, 2021

Coordinate System: World Geodetic System, 1984
 Universal Transverse Mercator, Zone 19 North



Legend

- Study Area
- 20 Foot Contour
- Delineated Stream (Winter)

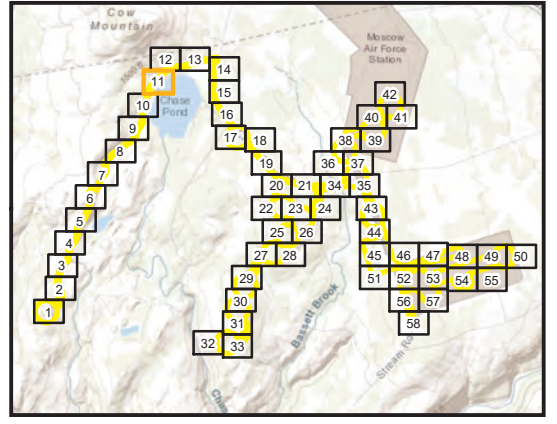


Figure 3
Sheet 11 of 58
Aquatic Resource Survey Results
Western Maine Renewable Energy Project

Prepared For:

Prepared By: **TETRA TECH** Date: **05/2021**

Source: Esri, et. al., 2020; Tetra Tech, 2020-21; Western Maine Renewables, 2021

Coordinate System: World Geodetic System, 1984 Universal Transverse Mercator, Zone 19 North



Legend

- Study Area
- 20 Foot Contour
- Delineated Stream (Winter)

The inset map shows the project area within a larger regional context, including Cow Mountain and Moose Air Force Station. It displays 50 numbered survey points (1-50) distributed across the terrain. A north arrow and a scale bar (0 to 250 feet) are also present.

Figure 3
Sheet 12 of 58
Aquatic Resource Survey Results
Western Maine Renewable Energy Project

Prepared For:

Prepared By: **TETRA TECH** Date: **05/2021**

Source: Esri, et. al., 2020; Tetra Tech, 2020-21; Western Maine Renewables, 2021

Coordinate System: World Geodetic System, 1984 Universal Transverse Mercator, Zone 19 North



Legend

- Study Area
- 20 Foot Contour
- Wetland Continuation Line
- Potential Vernal Pool
- Delineated Wetland (Winter)
- Delineated Stream (Winter)

N

0 125 250 Feet

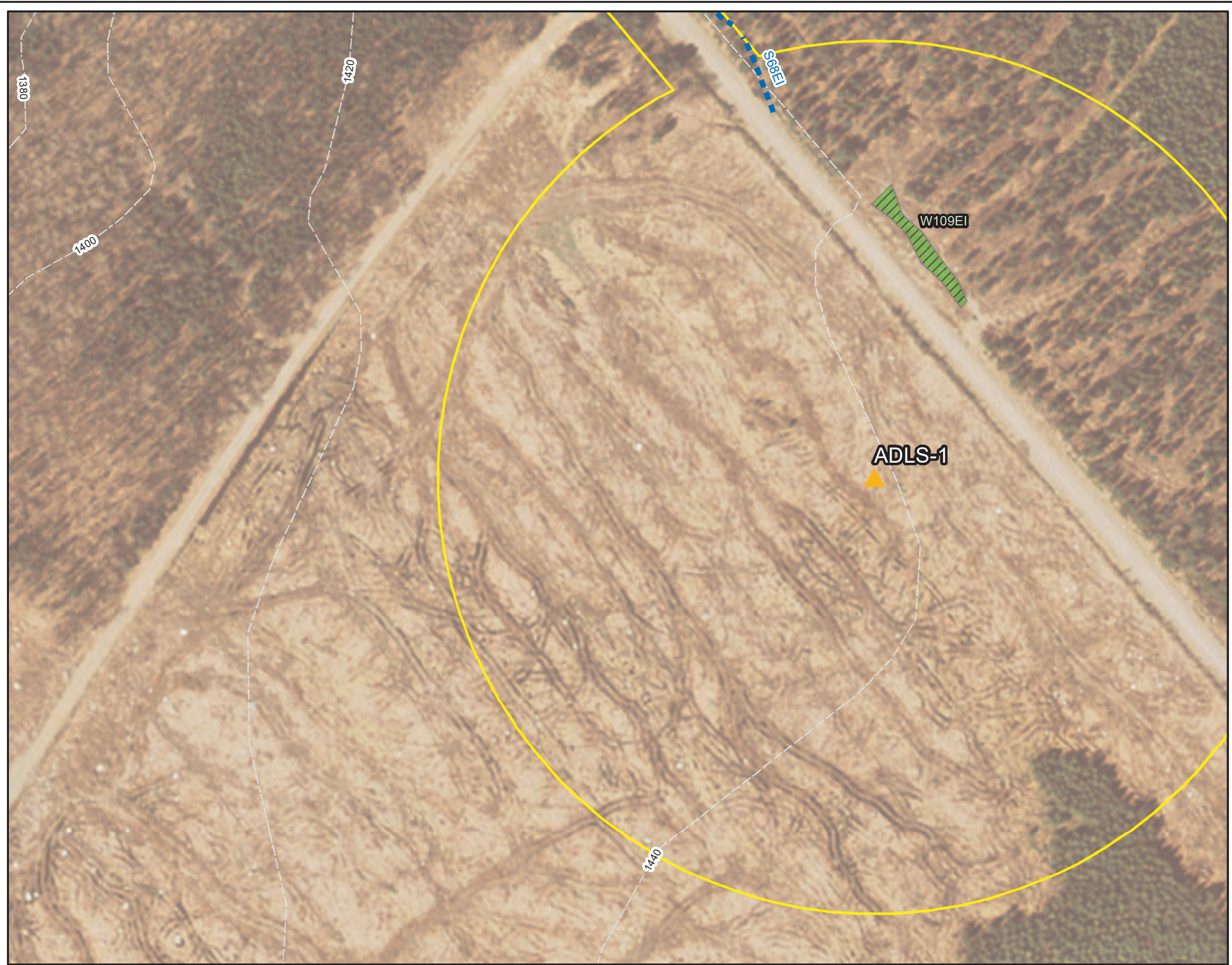
Figure 3
Sheet 14 of 58
Aquatic Resource Survey Results
Western Maine Renewable Energy Project

Prepared For:

Prepared By: **TETRA TECH** Date: **05/2021**

Source: Esri, et. al., 2020; Tetra Tech, 2020-21; Western Maine Renewables, 2021

Coordinate System: World Geodetic System, 1984 Universal Transverse Mercator, Zone 19 North



Legend

- Study Area
- 20 Foot Contour
- Aircraft Detection Lighting System Tower
- Delineated Wetland (Winter)
- Delineated Stream (Winter)

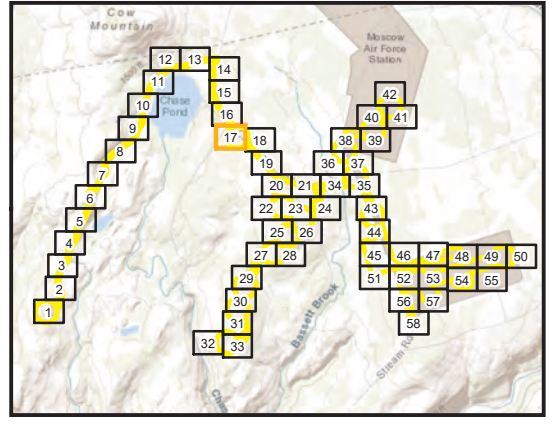


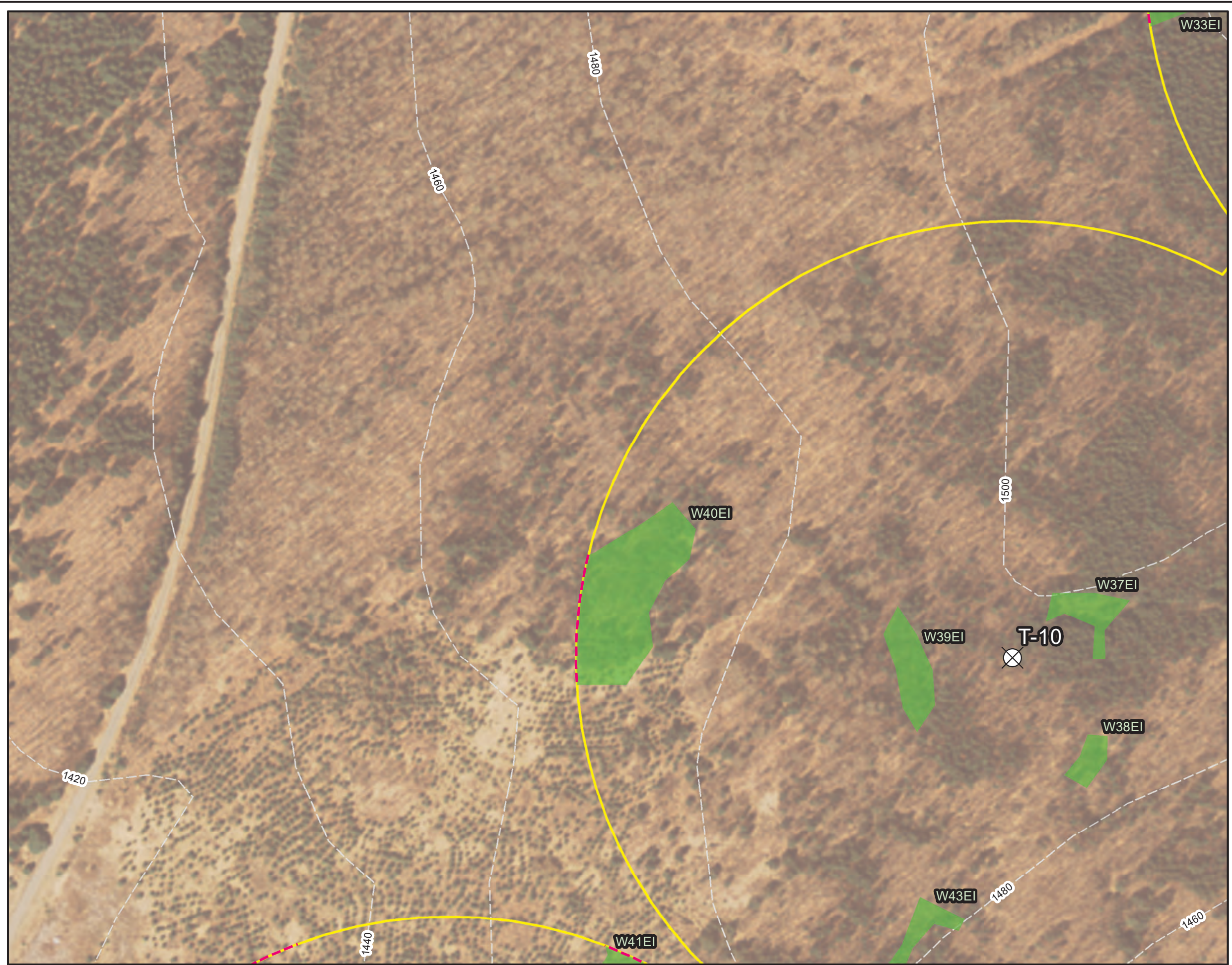
Figure 3
Sheet 17 of 58
Aquatic Resource Survey Results
Western Maine Renewable Energy Project

Prepared For:

Prepared By: **TETRA TECH** Date: **05/2021**

Source: Esri, et. al., 2020; Tetra Tech, 2020-21; Western Maine Renewables, 2021

Coordinate System: World Geodetic System, 1984 Universal Transverse Mercator, Zone 19 North



Legend

- Study Area
- 20 Foot Contour
- ⊗ Turbine Location
- Wetland Continuation Line
- Delineated Wetland (Summer)

N

0 125 250 Feet

Figure 3
Sheet 25 of 58
Aquatic Resource Survey Results
Western Maine Renewable Energy Project

Prepared For:

Prepared By:	Date: 05/2021
--------------	-------------------------

Source: Esri, et. al., 2020; Tetra Tech, 2020-21; Western Maine Renewables, 2021

Coordinate System: World Geodetic System, 1984
 Universal Transverse Mercator, Zone 19 North

