

- Legend**
- Study Area
 - 20 Foot Contour
 - Clearing Limit
 - Grading Limit
 - Critical Terrestrial Habitat (250ft)
 - Vernal Pool
 - Stream Crossing
 - Delineated Wetland
 - Delineated Stream

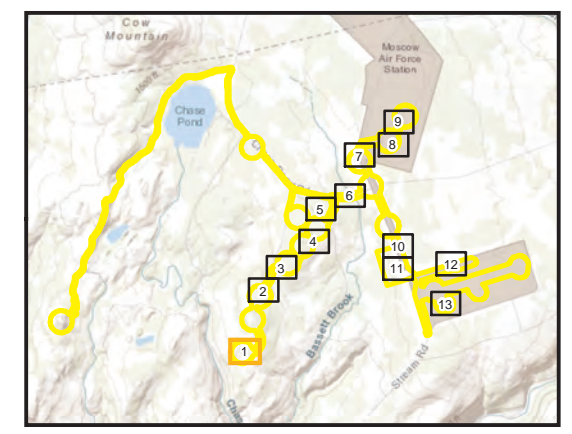


Figure 6-1
Sheet 1 of 13
Proposed Aquatic Resources Impacts
Western Maine Renewable Energy Project

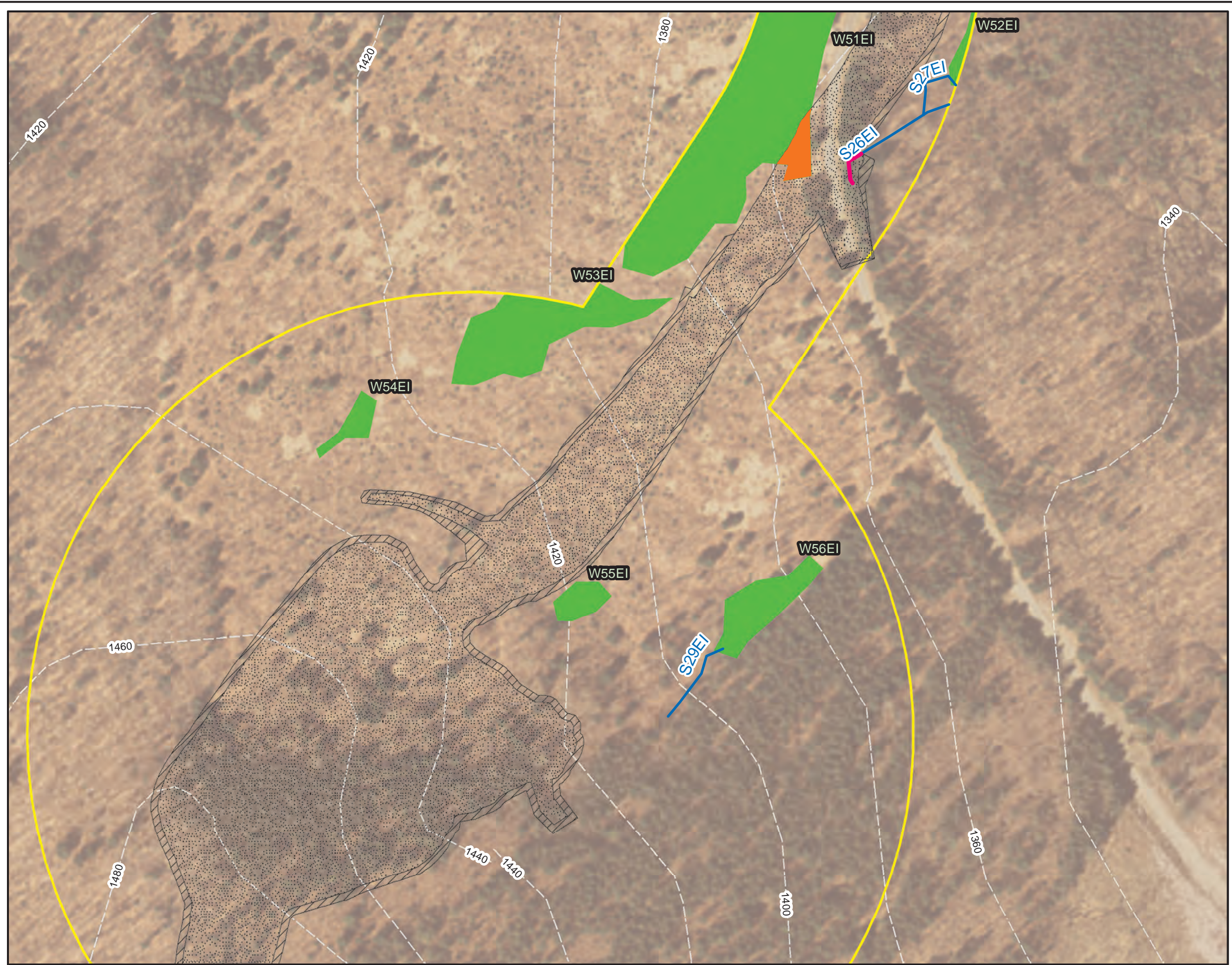
Prepared For:

Prepared By:	Date: 05/2021
--------------	-------------------------

Source: Esri, et. al., 2020; Tetra Tech, 2020-21;
 Western Maine Renewables, 2021

Coordinate System: World Geodetic System, 1984
 Universal Transverse Mercator, Zone 19 North

Document Path: Z:\projects\947\PROJECTS\PA\T\01\947_1300_MOSCO\W\mri\03\GIS\MAPS\IMPACTS\FIGURE_6-1_052021\Figure_6-1_Sheet_1_of_13_052021.mxd



Legend

- Study
- 20 Foot Contour
- Grading Limit
- Wetland Grading Impact
- Stream Crossing
- Delineated Wetland
- Delineated Stream
- Clearing Limit

N

0 125 250 Feet

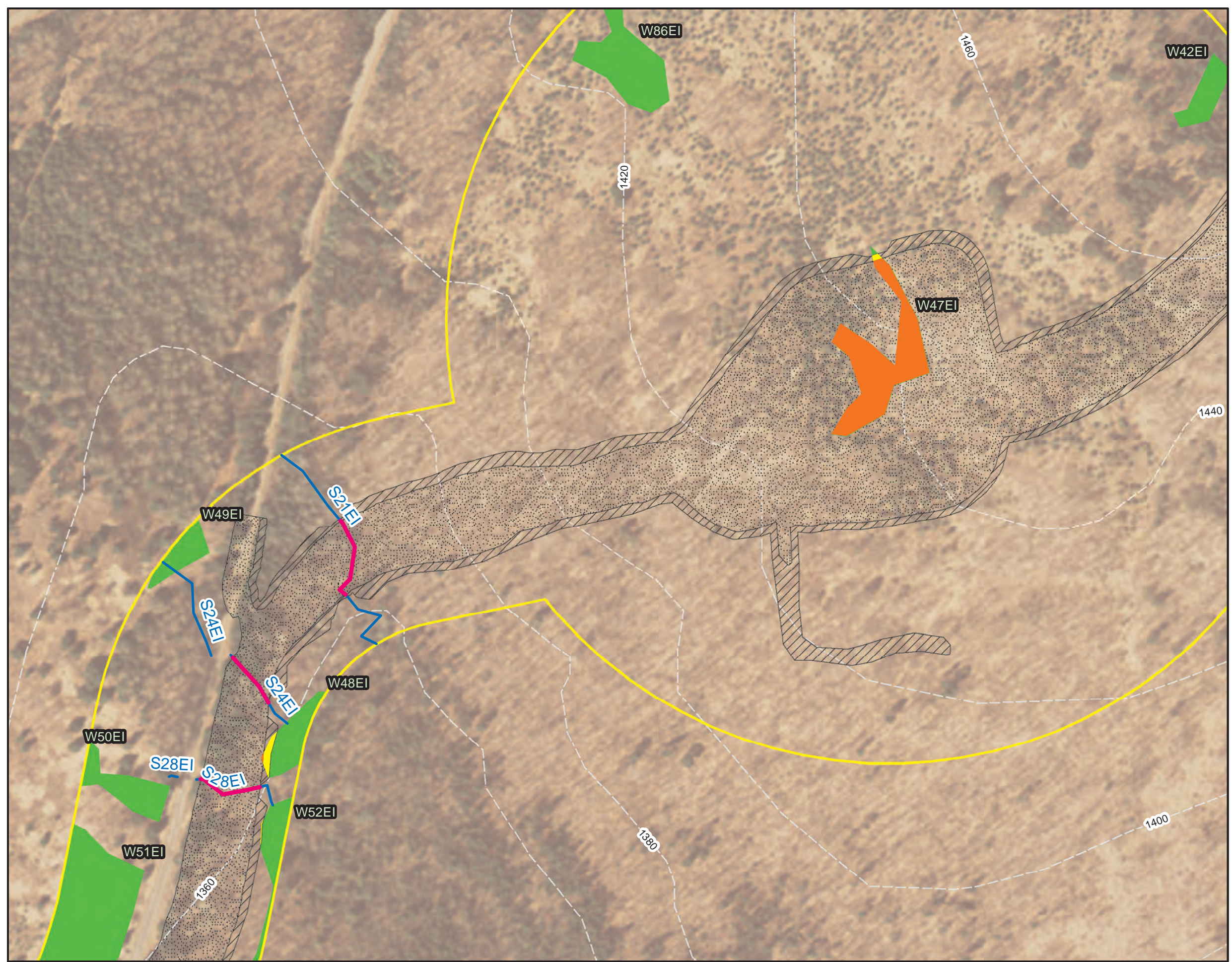
Figure 6-1
Sheet 2 of 13
Proposed Aquatic Resources Impacts
Western Maine Renewable Energy Project

Prepared For:



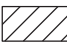






Prepared By: **TETRA TECH** Date: **05/2021**

Source: Esri, et. al., 2020; Tetra Tech, 2020-21; Western Maine Renewables, 2021

Coordinate System: World Geodetic System, 1984 Universal Transverse Mercator, Zone 19 North



Legend

-  Study Area
-  20 Foot Contour
-  Clearing Limit
-  Grading Limit
-  Wetland Clearing Impact
-  Wetland Grading Impact
-  Stream Crossing
-  Delineated Wetland
-  Delineated Stream

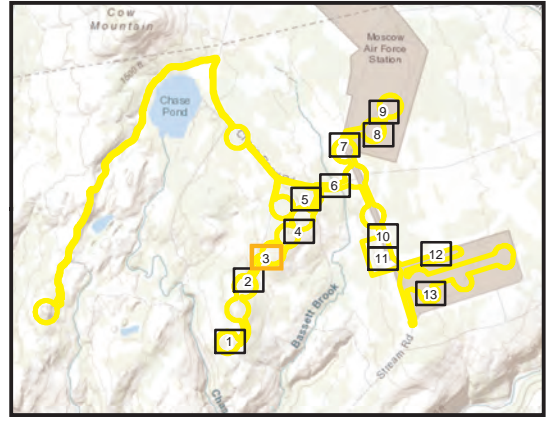


Figure 6-1
Sheet 3 of 13
Proposed Aquatic Resources Impacts
Western Maine Renewable Energy Project

Prepared For: 

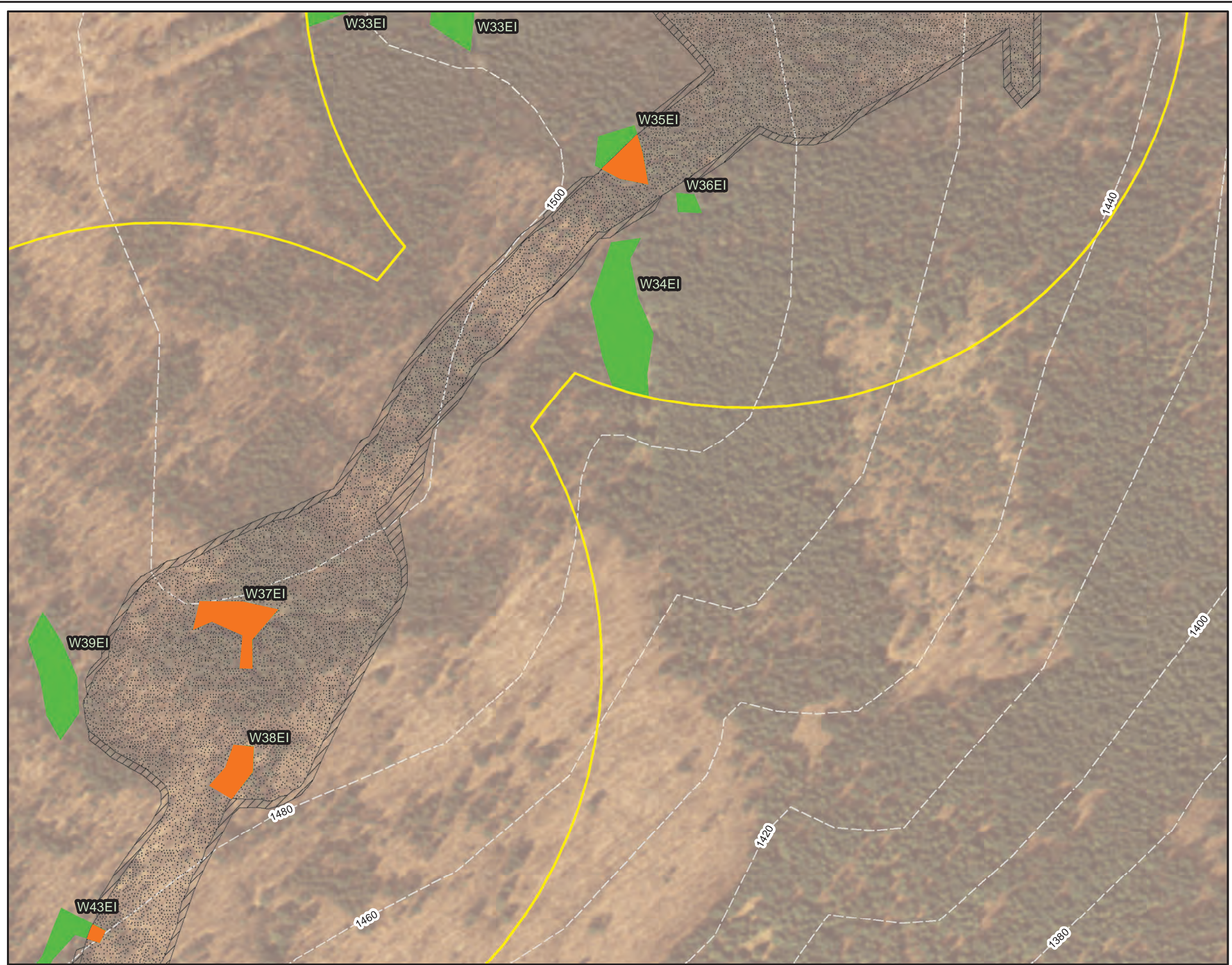
Prepared By: 

Date:
05/2021

Source: Esri, et. al., 2020; Tetra Tech, 2020-21; Western Maine Renewables, 2021

Coordinate System: World Geodetic System, 1984
 Universal Transverse Mercator, Zone 19 North

I:\Projects\2021\Western Maine Renewable Energy Project\Figures\Figure 6-1\Map_Sheet 3 of 13.dwg
 Date: 05/2021
 Prepared By: Tetra Tech
 Prepared For: Western Maine Renewables LLC
 Figure 6-1 Sheet 3 of 13 Proposed Aquatic Resources Impacts Western Maine Renewable Energy Project



Legend

- Study Area
- 20 Foot Contour
- Clearing Limit
- Grading Limit
- Wetland Clearing Impact
- Wetland Grading Impact
- Delineated Wetland
- Delineated Stream

0 125 250 Feet

North Arrow

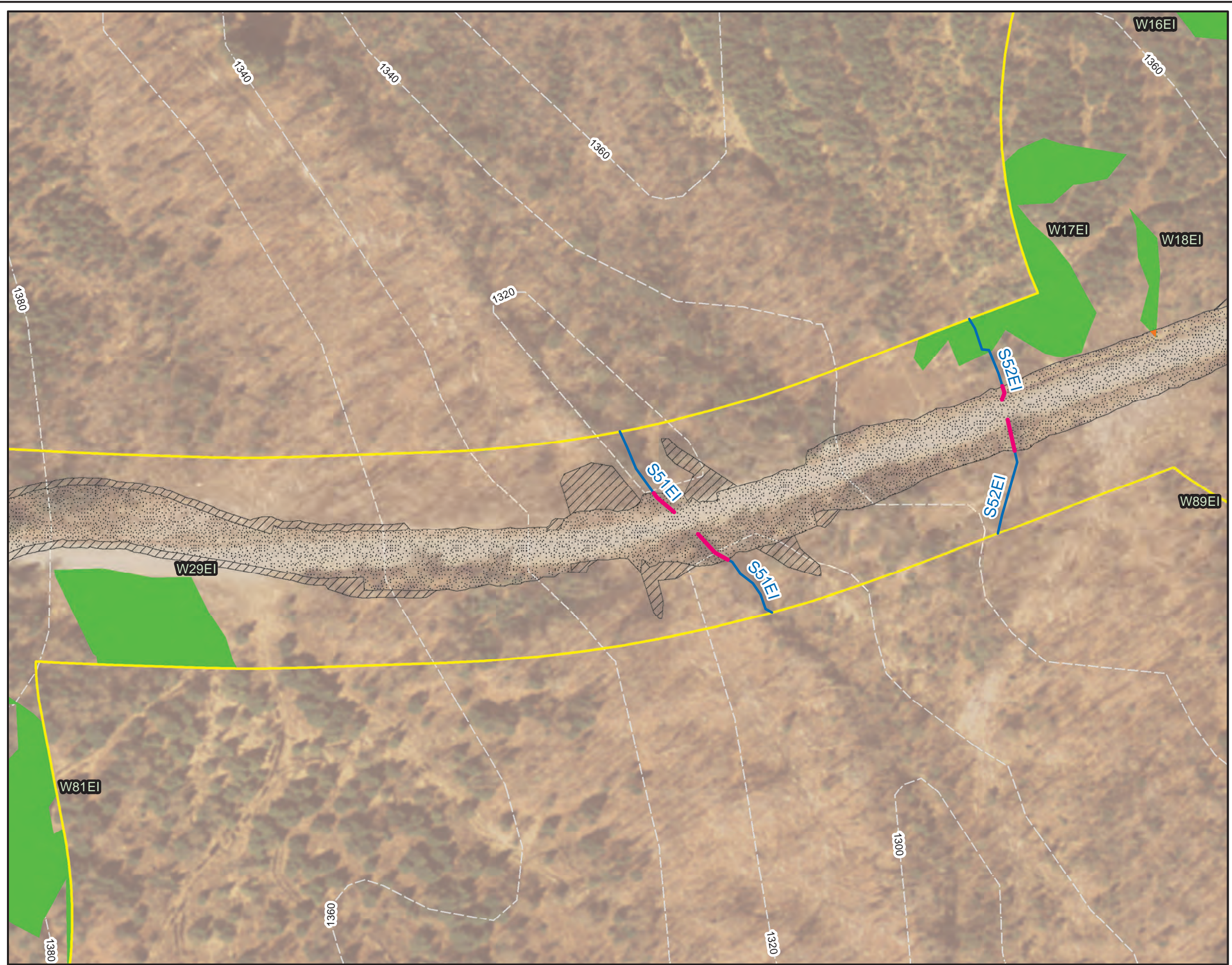
Figure 6-1
Sheet 4 of 13
Proposed Aquatic Resources Impacts
Western Maine Renewable Energy Project

Prepared For:

Prepared By: **TETRA TECH** Date: **05/2021**

Source: Esri, et. al., 2020; Tetra Tech, 2020-21; Western Maine Renewables, 2021

Coordinate System: World Geodetic System, 1984 Universal Transverse Mercator, Zone 19 North



Legend

- Study Area
- 20 Foot Contour
- Clearing Limit
- Grading Limit
- Wetland Grading Impact
- Stream Crossing
- Delineated Wetland
- Delineated Stream

N

0 125 250 Feet

Figure 6-1
Sheet 6 of 13
Proposed Aquatic Resources Impacts
Western Maine Renewable Energy Project

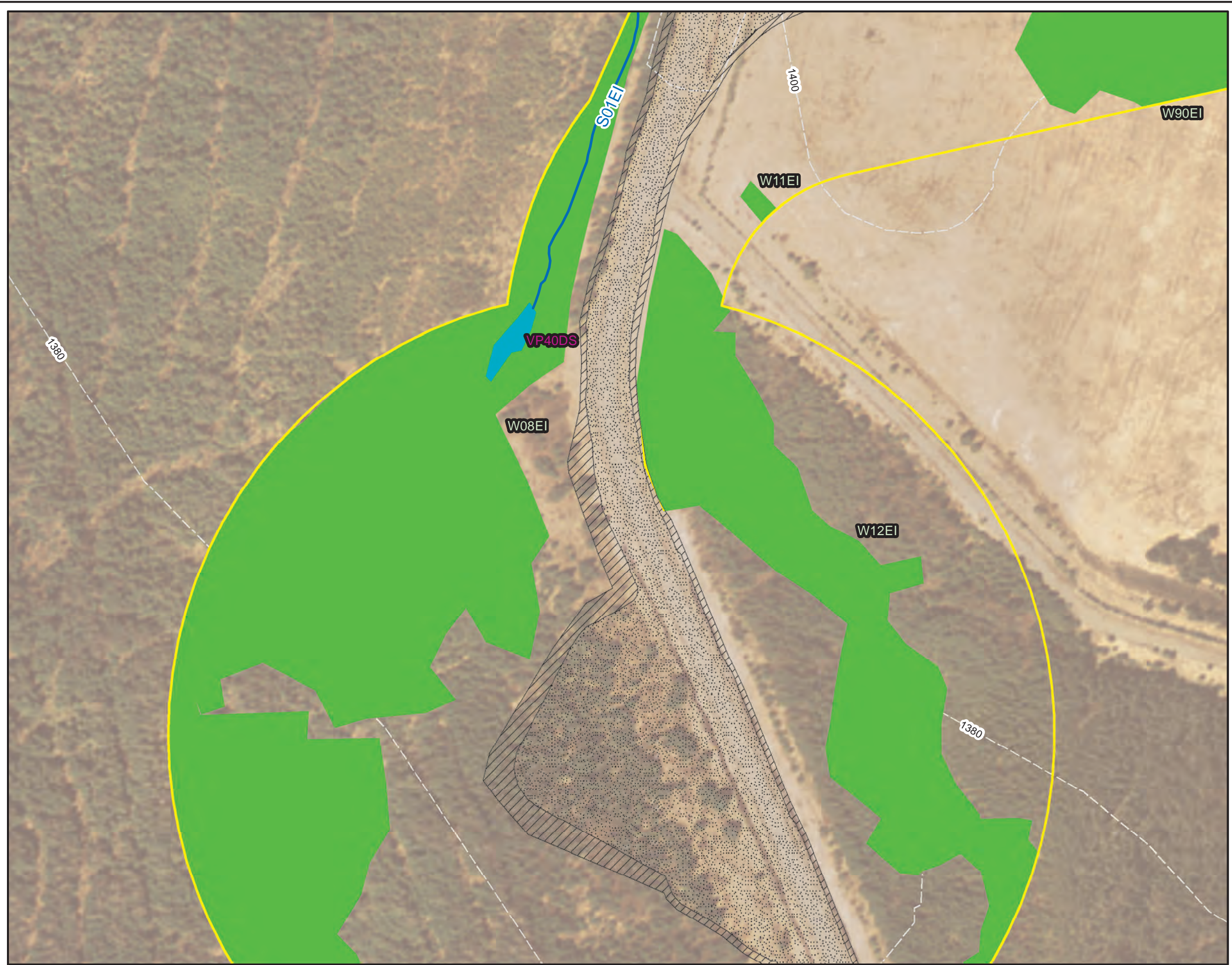
Prepared For:

Prepared By: **TETRA TECH** Date: **05/2021**

Source: Esri, et. al., 2020; Tetra Tech, 2020-21; Western Maine Renewables, 2021

Coordinate System: World Geodetic System, 1984
 Universal Transverse Mercator, Zone 19 North

Document Path: Z:\projects\942\PROJECTS\PA\T\01\942_7130_MOSCOV\WME\01\GIS\SWAMP\GIS\RES\SV\T01\WORKSHE\T01\WORKSHE_20210207\GCI\FIGURE_7_30\GCI\FIG_7_30\GCI\FIG_7_30_01\FIG_7_30_01_06_01.dwg



Legend

- Study
- 20 Foot Contour
- Clearing Limit
- Grading Limit
- Vernal Pool
- Wetland Clearing Impact
- Delineated Wetland
- Delineated Stream

N

0 125 250 Feet

Figure 6-1
Sheet 7 of 13
Proposed Aquatic Resources Impacts
Western Maine Renewable Energy Project

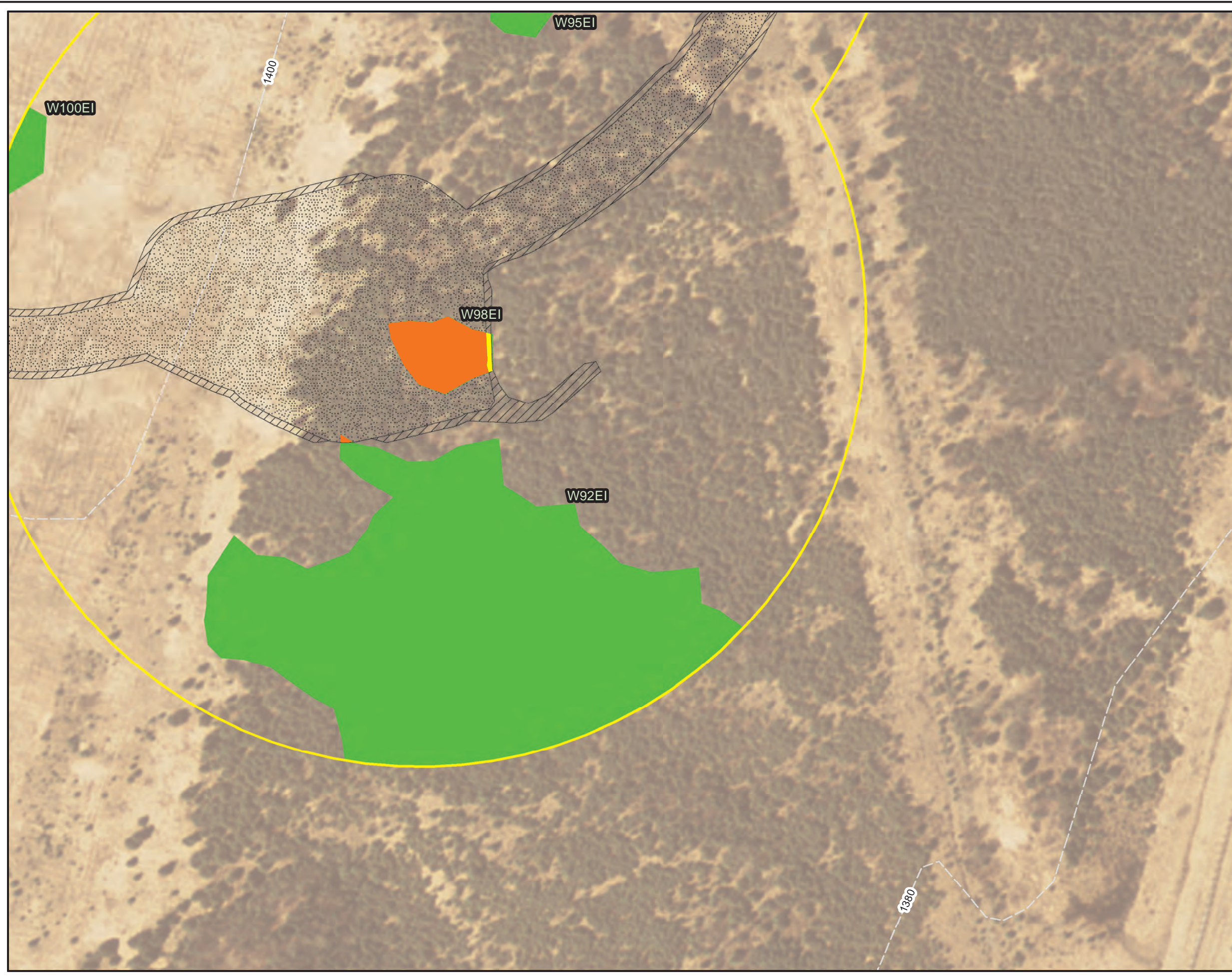
Prepared For:

Prepared By: **TETRA TECH** Date: **05/2021**

Source: Esri, et. al., 2020; Tetra Tech, 2020-21; Western Maine Renewables, 2021

Coordinate System: World Geodetic System, 1984
 Universal Transverse Mercator, Zone 19 North

Document Path: Z:\projects\942\PROJECTS\PA\TWO\1942\7300_MOSCO\W\mre\03a1815m\01\FIGURES\FIGURE6-1\FIGURE6-1_S01EAI\FIGURE6-1_S01EAI_IMPACTS.DWG



- Legend**
- Study
 - 20 Foot Contour
 - Clearing Limit
 - Grading Limit
 - Wetland Clearing Impact
 - Wetland Grading Impact
 - Delineated Wetland
 - Delineated Stream

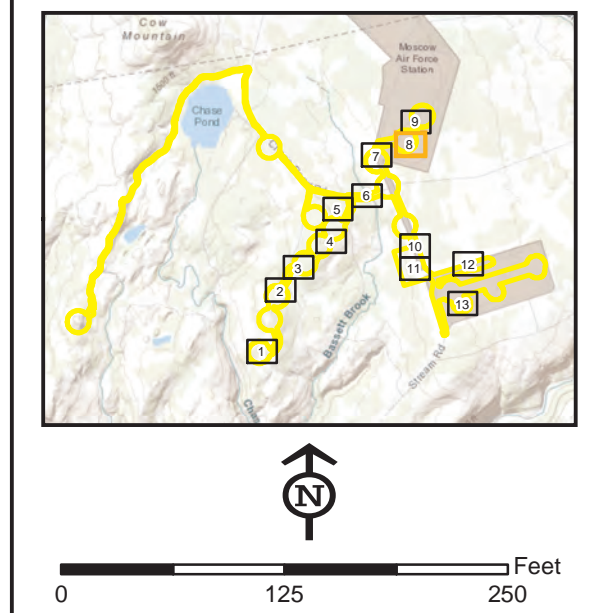


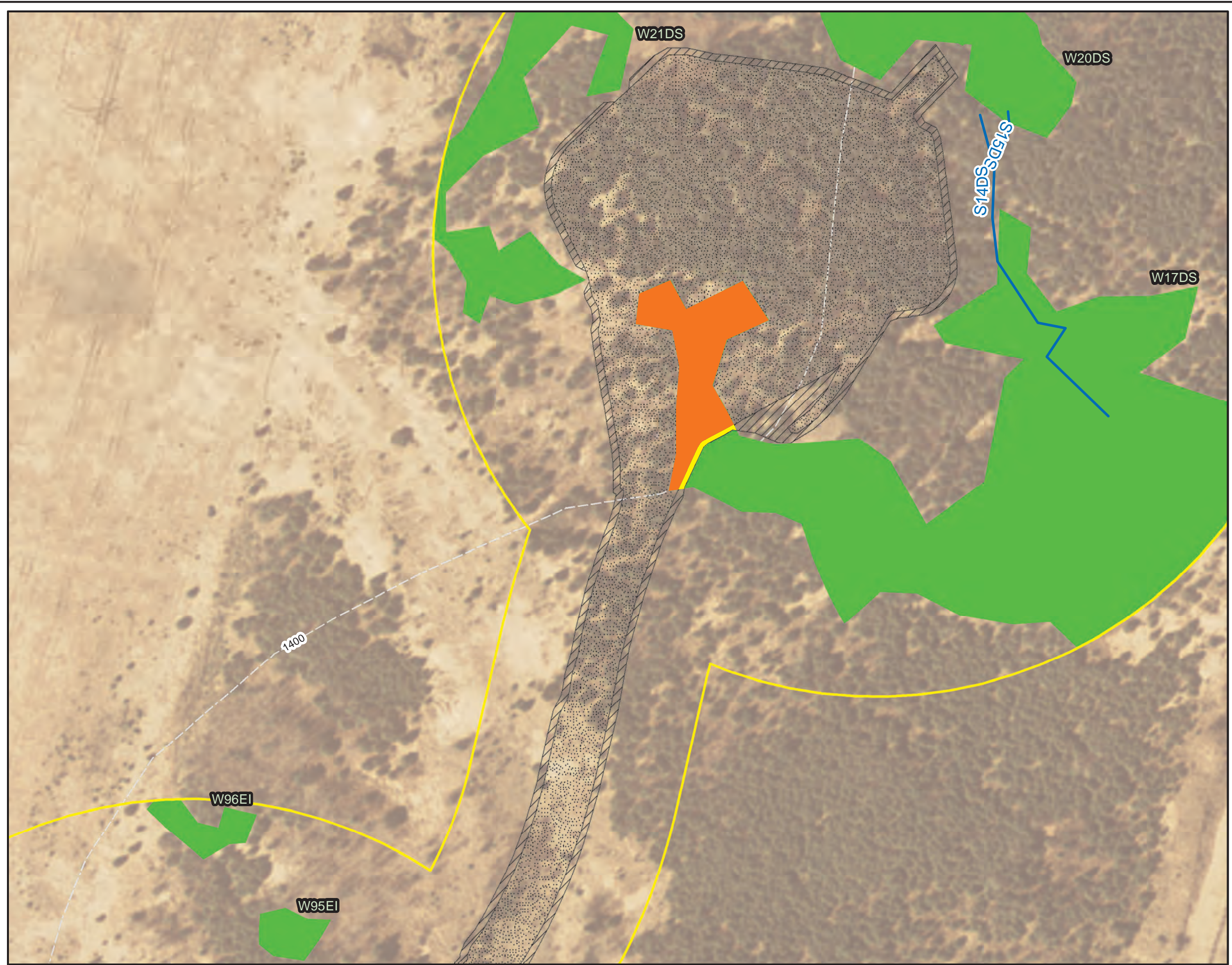
Figure 6-1
Sheet 8 of 13
Proposed Aquatic Resources Impacts
Western Maine Renewable Energy Project

Prepared For: 

Prepared By:  Date: **05/2021**

Source: Esri, et. al., 2020; Tetra Tech, 2020-21; Western Maine Renewables, 2021

Coordinate System: World Geodetic System, 1984 Universal Transverse Mercator, Zone 19 North



Legend

- Study
- 20 Foot Contour
- Clearing Limit
- Grading Limit
- Wetland Clearing Impact
- Wetland Grading Impact
- Delineated Wetland
- Delineated Stream

N

0 125 250 Feet

Figure 6-1
Sheet 9 of 13
Proposed Aquatic Resources Impacts
Western Maine Renewable Energy Project

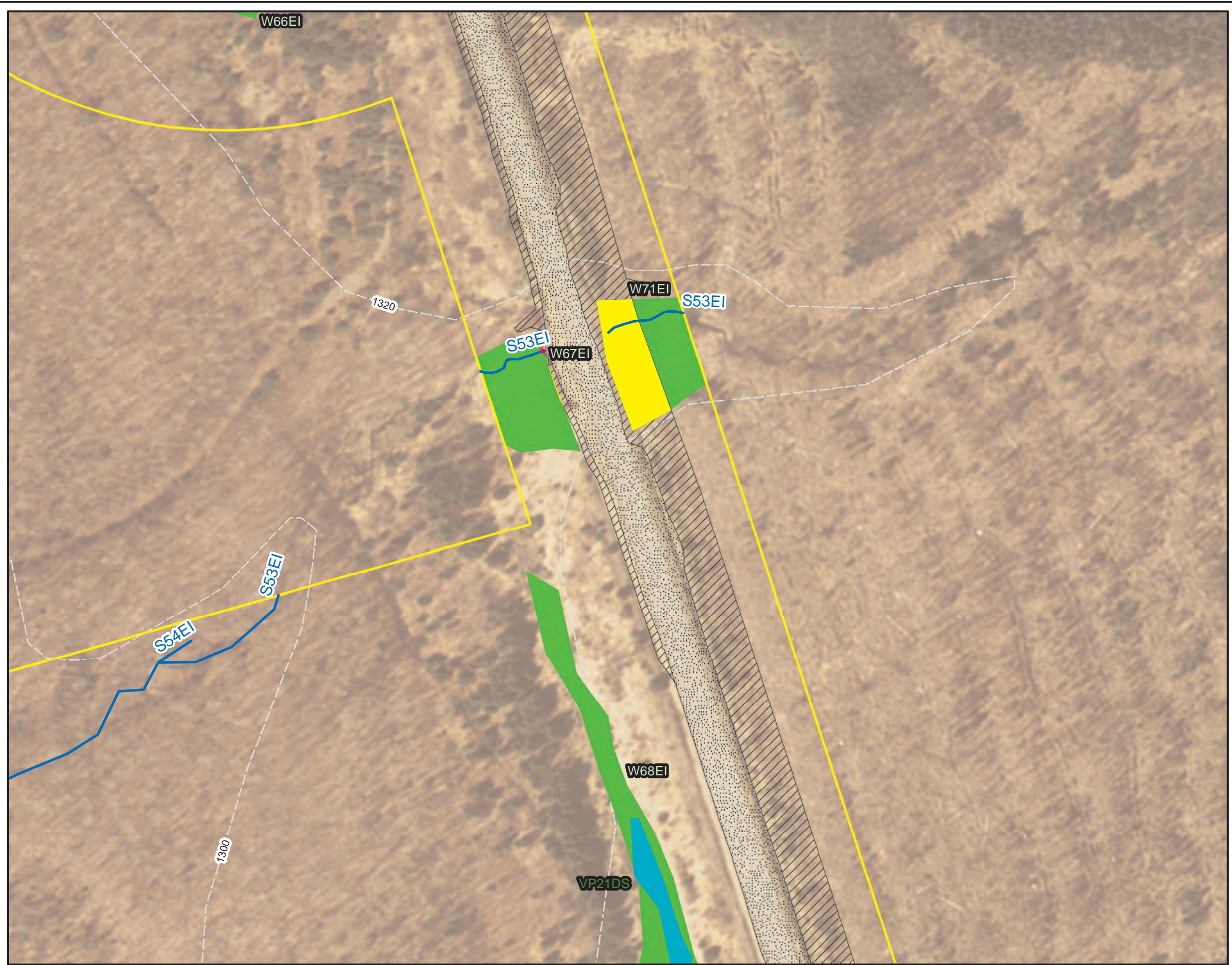
Prepared For:

Prepared By: **TETRA TECH** Date: **05/2021**

Source: Esri, et. al., 2020; Tetra Tech, 2020-21; Western Maine Renewables, 2021

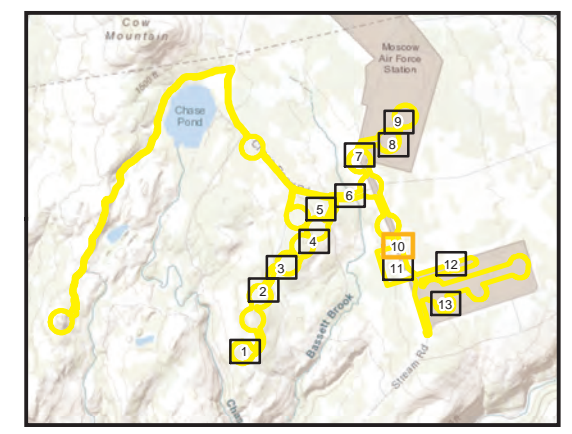
Coordinate System: World Geodetic System, 1984 Universal Transverse Mercator, Zone 19 North

Document Path: Z:\projects\942\PROJECTS\PA\TWO\1942\7300_MOSCOW\WMA\01\GIS\MA\01\FIGURES\FIGURE6-1\FIGURE6-1_30\Figure6-1_30.mxd



Legend

- Study
- 20 Foot Contour
- Clearing Limit
- Grading Limit
- Vernal Pool
- Wetland Clearing Impact
- Wetland Grading Impact
- Stream Crossing
- Delineated Wetland
- Delineated Stream



North arrow pointing up.

Scale bar: 0, 125, 250 Feet.

Figure 6-1
Sheet 10 of 13
Proposed Aquatic Resources Impacts
Western Maine Renewable Energy Project

Prepared For: 

Prepared By:  **TETRA TECH** Date: **05/2021**

Source: Esri, et. al., 2020; Tetra Tech, 2020-21; Western Maine Renewables, 2021

Coordinate System: World Geodetic System, 1984 Universal Transverse Mercator, Zone 19 North



Legend

- Study
- 20 Foot Contour
- Clearing Limit
- Grading Limit
- Vernal Pool
- Wetland Clearing Impact
- Wetland Grading Impact
- NECEC Wetland - Temporary Construction Mat Impact
- Delineated Wetland
- NECEC Wetland
- Delineated Stream

Inset map showing the project location with numbered points 1 through 13. The map includes labels for Chase Pond, Moose Air Force Station, and Bassett Brook. A north arrow and a scale bar (0, 125, 250 Feet) are also present.

Figure 6-1
Sheet 11 of 13
Proposed Aquatic Resources Impacts
Western Maine Renewable Energy Project

Prepared For:

Prepared By: **TETRA TECH** Date: **05/2021**

Source: Esri, et. al., 2020; Tetra Tech, 2020-21; Western Maine Renewables, 2021

Coordinate System: World Geodetic System, 1984 Universal Transverse Mercator, Zone 19 North



Legend

- Study Area
- 20 Foot Contour
- Clearing Limit
- Grading Limit
- Wetland Clearing Impact
- Delineated Wetland
- NECEC Wetland
- Delineated Stream

N

0 125 250 Feet

Figure 6-1
Sheet 12 of 13
Proposed Aquatic Resources Impacts
Western Maine Renewable Energy Project

Prepared For:

Prepared By: **TETRA TECH** Date: **05/2021**

Source: Esri, et. al., 2020; Tetra Tech, 2020-21; Western Maine Renewables, 2021

Coordinate System: World Geodetic System, 1984
 Universal Transverse Mercator, Zone 19 North

Document Path: Z:\projects\947\PROJECTS\PA\TWO\1947_7500_MUSCOV\WME\001\GIS\MAPS\IMPACTS\IMPACTS_12.dwg



- Legend**
- Study Area
 - 20 Foot Contour
 - Clearing Limit
 - Grading Limit
 - Wetland Clearing Impact
 - Wetland Grading Impact
 - Delineated Wetland
 - Delineated Stream

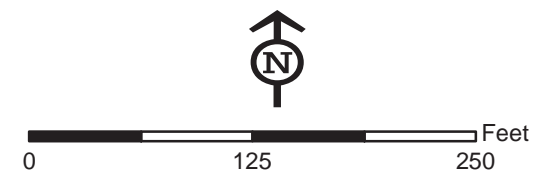
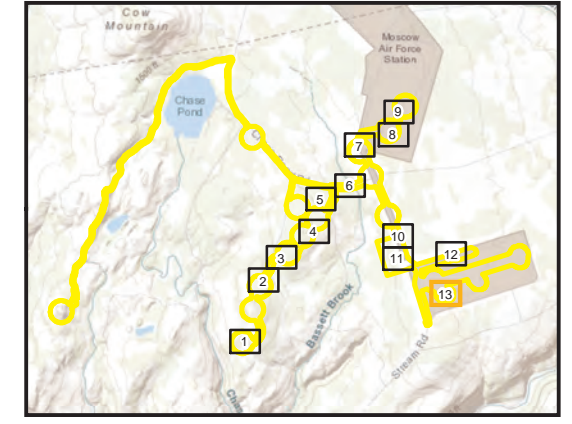


Figure 6-1
Sheet 13 of 13
Proposed Aquatic Resources Impacts
Western Maine Renewable Energy Project

Prepared For:

Prepared By: **TETRA TECH** Date: **05/2021**

Source: Esri, et. al., 2020; Tetra Tech, 2020-21; Western Maine Renewables, 2021

Coordinate System: World Geodetic System, 1984
 Universal Transverse Mercator, Zone 19 North