

MAIN-LAND

DEVELOPMENT CONSULTANTS, INC.

69 MAIN ST. LIVERMORE FALLS, MAINE
367 US ROUTE 1 FALMOUTH, MAINE
PH: (207) 897-6752 FAX: (207) 897-5401
WWW.MAIN-LANDDCI.COM

PROJECT

BOYNE RESORTS WEST MOUNTAIN EXPANSION

NEAR WEST MOUNTAIN ROAD, SUGARLOAF SKI RESORT

OWNER OF RECORD

BOYNE RESORTS

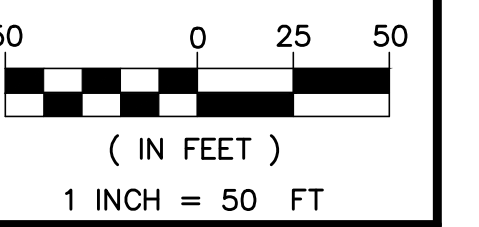
5092 ACCESS ROAD, CARRABASSETT VALLEY, MAINE

MADE FOR

VANASSE HANGEN BRUSTLIN, INC.

40 IDX DRIVE, BUILDING 100, SUITE 200, SOUTH BURLINGTON, VT

DRAWING SCALE:



SUBMISSION NOTES:

SUBMISSION 1: 2021-04-16 E.J.H. REVISION FOR CLIENT REVIEW

SUBMISSION 2: 2021-08-12 E.J.H. REVISION FOR INTERNAL REVIEW

SUBMISSION 3: 2021-09-03 E.J.H. REVISION FOR CLIENT REVIEW

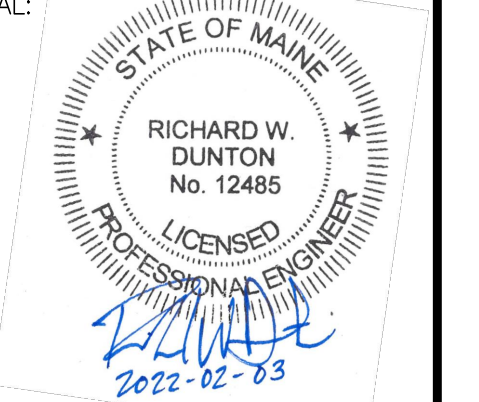
SUBMISSION 4: 2021-09-23 E.J.H. FOR PERMITTING

SUBMISSION 5: 2022-02-03 E.J.H. FOR PERMITTING RESUBMISSION

NOT FOR CONSTRUCTION

SEWER PLAN & PROFILE

SEAL:

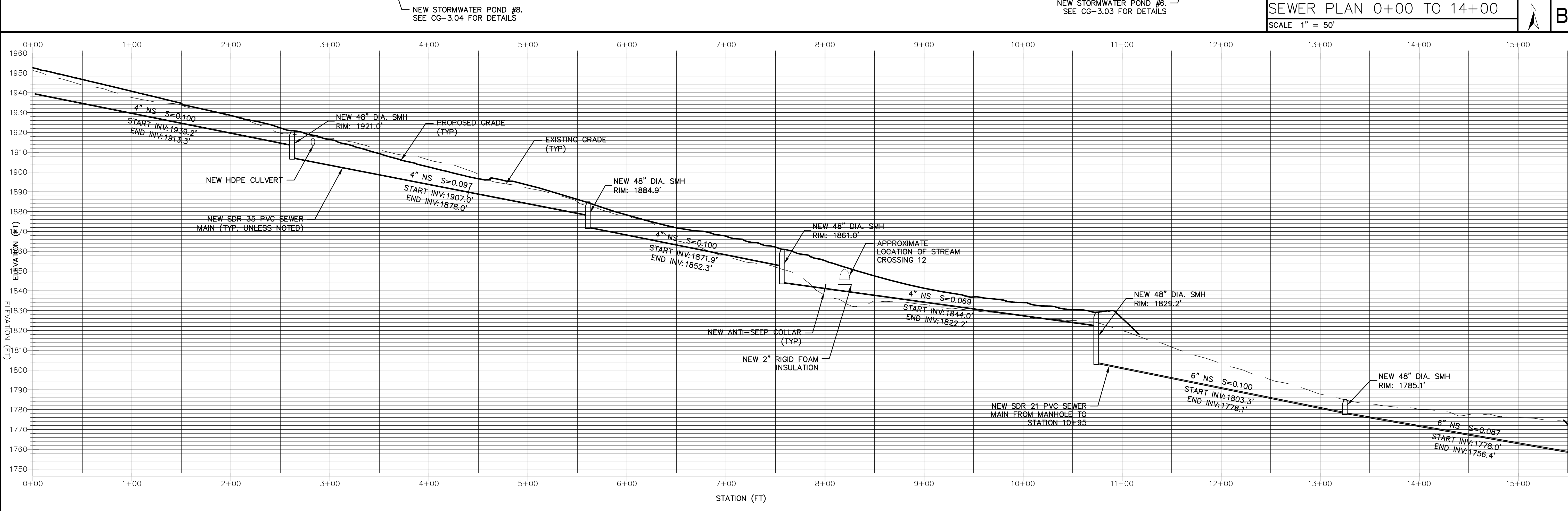
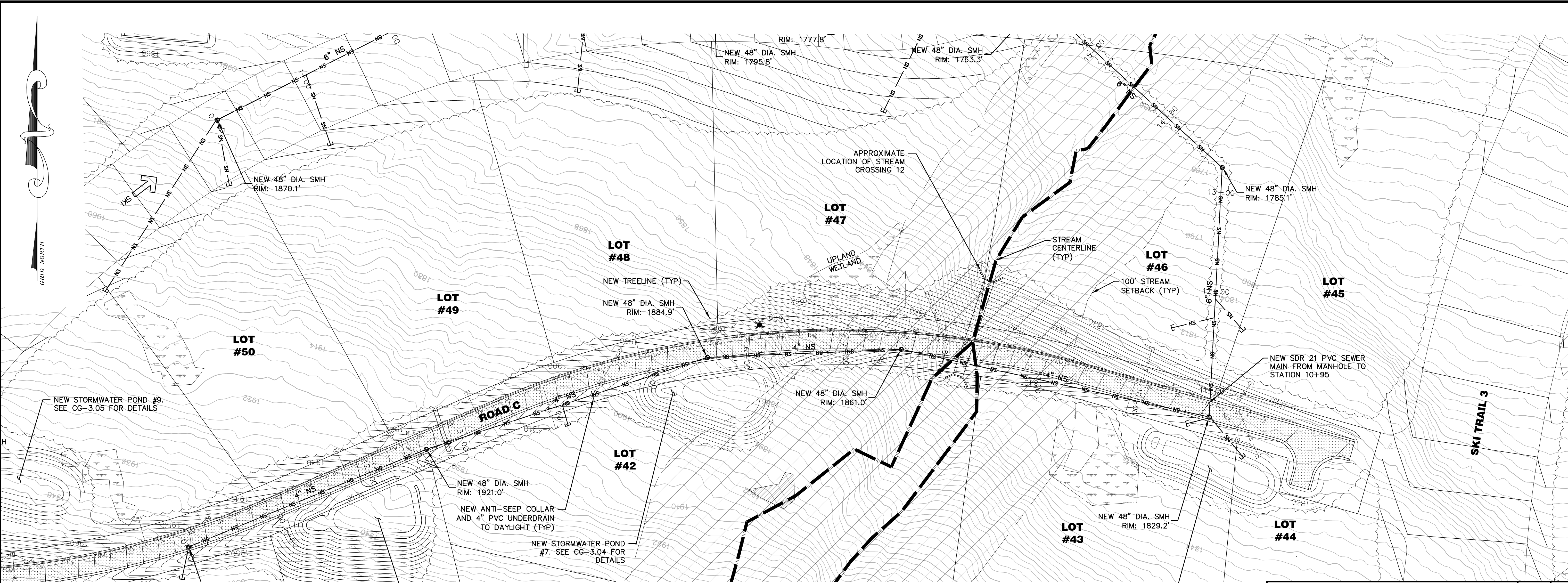


RICHARD W. DUNTON ME PE #12485

DRAWING NO.

C7.7

MLDC NO. 20-237



SEWER PLAN 0+00 TO 14+00

SCALE 1" = 50'

B1

SEWER PROFILE 0+00 TO 14+00

HORIZONTAL SCALE 1" = 50' VERTICAL SCALE 1" = 25'

A1