

MAIN-LAND
DEVELOPMENT
CONSULTANTS, INC.

69 MAIN ST. LIVERMORE FALLS, MAINE
367 US ROUTE 1 FALMOUTH, MAINE
PH: (207) 897-6732 FAX: (207) 897-5401
WWW.MAIN-LANDDC.COM

PROJECT

**BOYNE RESORTS
WEST MOUNTAIN
EXPANSION**

NEAR WEST MOUNTAIN ROAD,
SUGARLOAF SKI RESORT

OWNER OF RECORD

BOYNE RESORTS

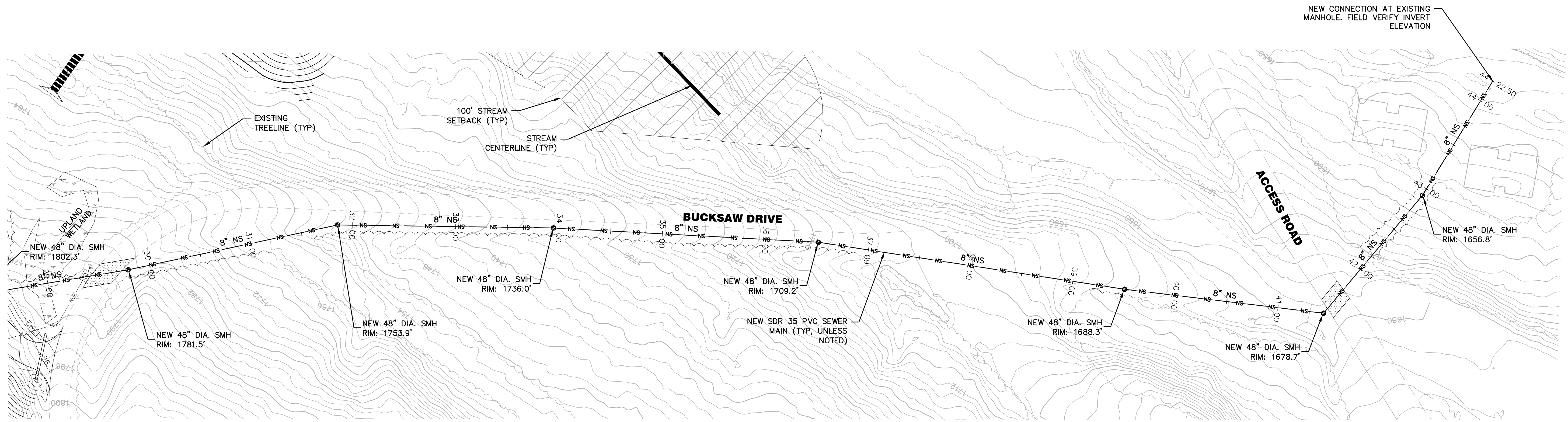
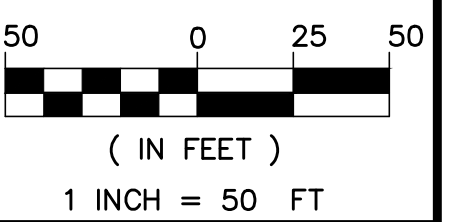
5092 ACCESS ROAD,
CARRABASSETT VALLEY, MAINE

MADE FOR

**VANASSE HANGEN
BRUSTLIN, INC.**

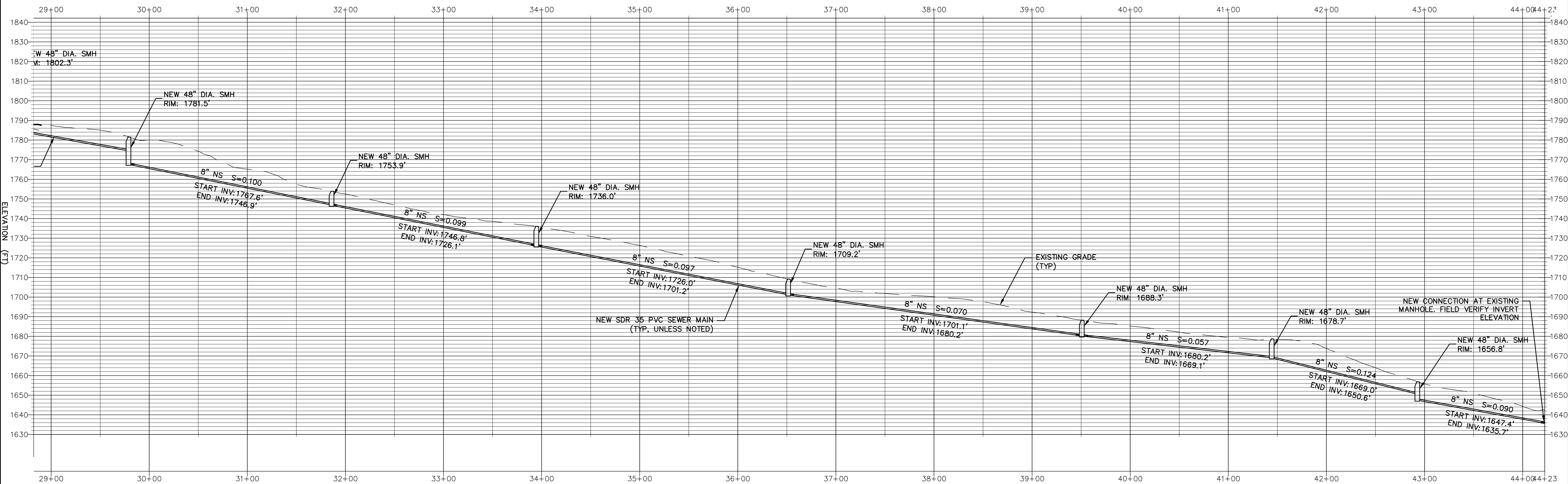
40 IDX DRIVE, BUILDING 100, SUITE
200, SOUTH BURLINGTON, VT

DRAWING SCALE:



SEWER PLAN 29+00 TO END
SCALE 1" = 50'

B1



SEWER PROFILE 29+00 TO END
HORIZONTAL SCALE 1" = 50' VERTICAL SCALE 1" = 25'

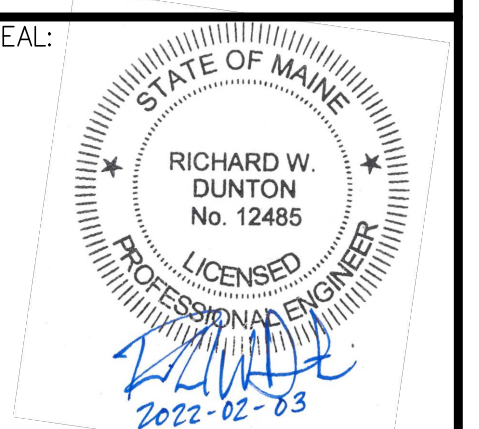
A1

SUBMISSION NOTES:
SUBMISSION 1: 2021-04-16 E/JH
REVISION FOR CLIENT REVIEW
SUBMISSION 2: 2021-08-12 E/JH
REVISION FOR INTERNAL REVIEW
SUBMISSION 3: 2021-09-03 E/JH
REVISION FOR CLIENT REVIEW
SUBMISSION 4: 2021-09-23 E/JH
FOR PERMITTING
SUBMISSION 5: 2022-02-03 E/JH
FOR PERMITTING RESUBMISSION

PROJ. MGR: RWD
DRAWN BY: E/JH
CHECKED BY: RWD
SUBMISSION NO. 5
SURVEY DATE: N/A
SUBMISSION DATE: 2022-02-03
SUBMITTED FOR: REVIEW

NOT FOR CONSTRUCTION

**SEWER PLAN &
PROFILE**



RICHARD W. DUNTON ME PE #12485

DRAWING NO.

C7.14
MLDC NO. 20-237