

MAIN-LAND
DEVELOPMENT
CONSULTANTS, INC.

69 MAIN ST. LIVERMORE FALLS, MAINE
367 US ROUTE 1 FALMOUTH, MAINE
PH: (207) 897-6732 FAX: (207) 897-5404
WWW.MAIN-LANDDC.COM

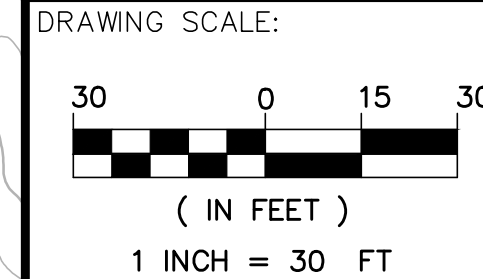
PROJECT
**BOYNE RESORTS
WEST MOUNTAIN
EXPANSION**

NEAR WEST MOUNTAIN ROAD,
SUGARLOAF SKI RESORT
OWNER OF RECORD

BOYNE RESORTS
5092 ACCESS ROAD,
CARRABASSETT VALLEY, MAINE

MADE FOR
**VANASSE HANGEN
BRUSTLIN, INC.**

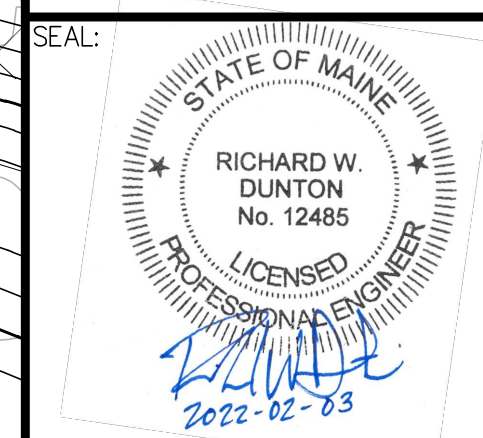
40 IDX DRIVE, BUILDING 100, SUITE
200, SOUTH BURLINGTON, VT



SUBMISSION NOTES:
SUBMISSION 1: 2021-04-20 E/JH
REVISION FOR CLIENT REVIEW
SUBMISSION 2: 2021-08-12 E/JH
REVISION FOR INTERNAL REVIEW
SUBMISSION 3: 2021-09-03 E/JH
REVISION FOR CLIENT REVIEW
SUBMISSION 4: 2021-09-23 E/JH
FOR PERMITTING
SUBMISSION 5: 2022-02-03 E/JH
FOR PERMITTING RESUBMISSION

PROJ. MGR: RWD
DRAWN BY: E/JH
CHECKED BY: RWD
SUBMISSION NO. 5
SURVEY DATE: N/A
SUBMISSION DATE: 2022-02-03
SUBMITTED FOR: REVIEW

NOT FOR CONSTRUCTION
**CONDO AREA
SITE PLAN**



RICHARD W. DUNTUN ME PE #12485
DRAWING NO.

C2.8
MLDC NO. 20-237