

**MAIN-LAND**  
DEVELOPMENT  
CONSULTANTS, INC.

69 MAIN ST. LIVERMORE FALLS, MAINE  
367 US ROUTE 1 FALMOUTH, MAINE  
PH: (207) 897-6732 FAX: (207) 897-5404  
WWW.MAIN-LANDDC.COM

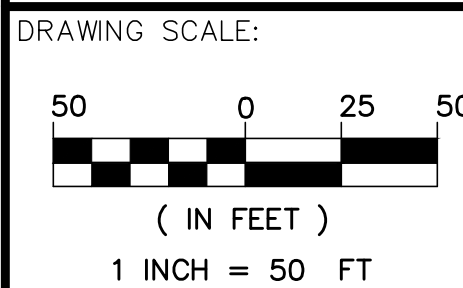
PROJECT  
**BOYNE RESORTS  
WEST MOUNTAIN  
EXPANSION**

NEAR WEST MOUNTAIN ROAD,  
SUGARLOAF SKI RESORT  
OWNER OF RECORD

**BOYNE RESORTS**  
  
5092 ACCESS ROAD,  
CARRABASSETT VALLEY, MAINE

MADE FOR  
**VANASSE HANGEN  
BRUSTLIN, INC.**

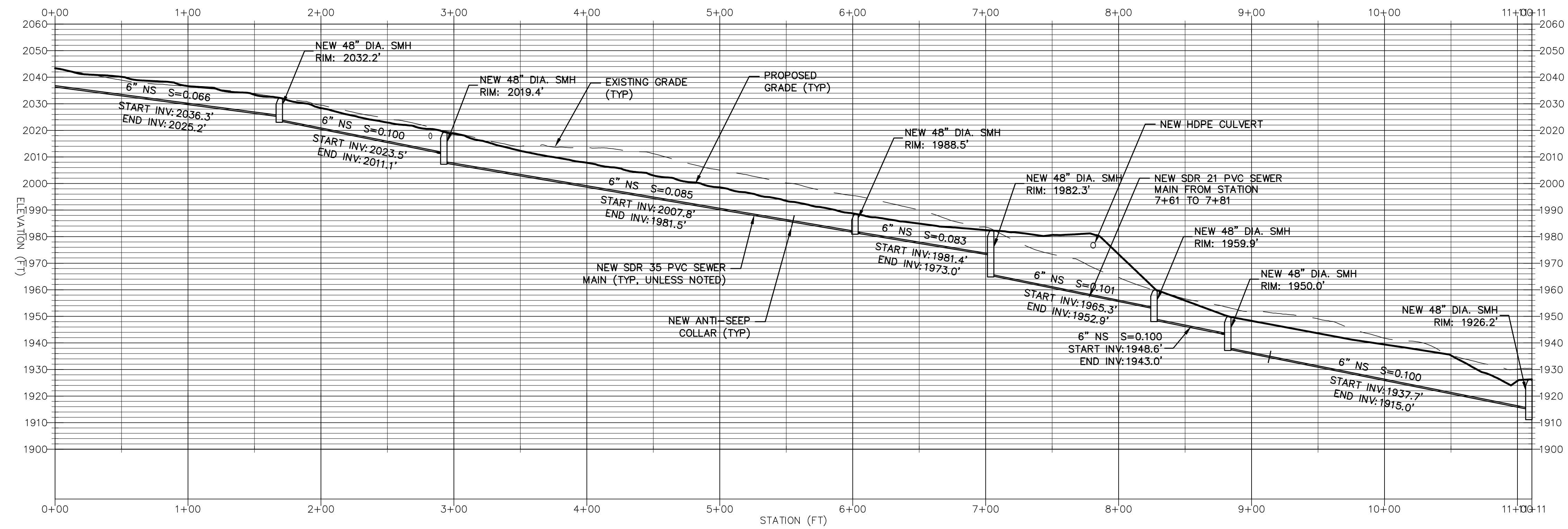
40 IDX DRIVE, BUILDING 100, SUITE  
200, SOUTH BURLINGTON, VT



SUBMISSION NOTES:  
SUBMISSION 1: 2021-04-16 E.J.H.  
REVISION FOR CLIENT REVIEW  
SUBMISSION 2: 2021-08-12 E.J.H.  
REVISION FOR INTERNAL REVIEW  
SUBMISSION 3: 2021-09-03 E.J.H.  
REVISION FOR CLIENT REVIEW  
SUBMISSION 4: 2021-09-23 E.J.H.  
FOR PERMITTING

**SEWER PLAN ROAD D SPUR**  
SCALE: 1"=50'

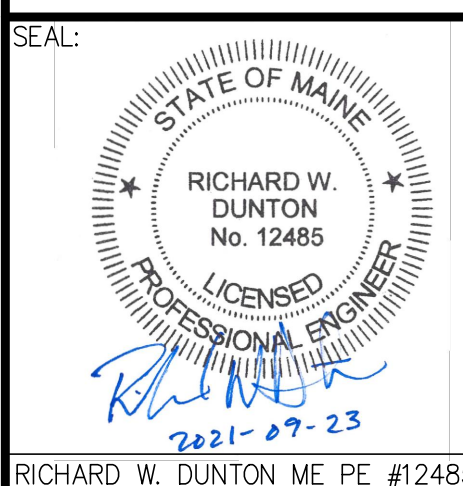
**B1**



**SEWER PROFILE ROAD D SPUR**  
HORIZONTAL SCALE 1" = 50' VERTICAL SCALE 1" = 25'

**A1**

**NOT FOR CONSTRUCTION**  
**SEWER PLAN &  
PROFILE**



RICHARD W. DUNTON ME PE #12485  
DRAWING NO.

**C7.5**  
MLDC NO. 20-237