

**MAIN-LAND**  
DEVELOPMENT  
CONSULTANTS, INC.

69 MAIN ST. LIVERMORE FALLS, MAINE  
367 US ROUTE 1 FALMOUTH, MAINE  
PH: (207) 897-6732 FAX: (207) 897-5404  
WWW.MAIN-LANDDC.COM

PROJECT  
**BOYNE RESORTS  
WEST MOUNTAIN  
EXPANSION**

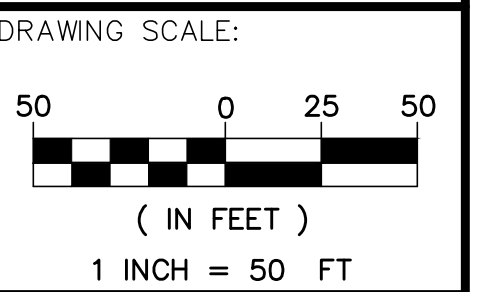
NEAR WEST MOUNTAIN ROAD,  
SUGARLOAF SKI RESORT

OWNER OF RECORD  
**BOYNE RESORTS**

5092 ACCESS ROAD,  
CARRABASSETT VALLEY, MAINE

MADE FOR  
**VANASSE HANGEN  
BRUSTLIN, INC.**

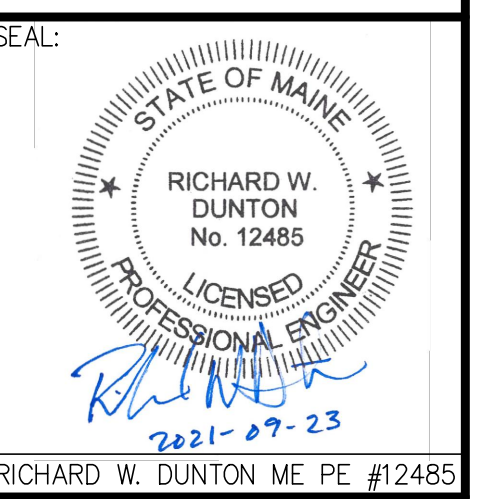
40 IDX DRIVE, BUILDING 100, SUITE  
200, SOUTH BURLINGTON, VT



SUBMISSION NOTES:  
SUBMISSION 1: 2021-04-16 E.J.H.  
REVISION FOR CLIENT REVIEW  
SUBMISSION 2: 2021-08-12 E.J.H.  
REVISION FOR INTERNAL REVIEW  
SUBMISSION 3: 2021-09-03 E.J.H.  
REVISION FOR CLIENT REVIEW  
SUBMISSION 4: 2021-09-07 E.J.H.  
REVISION FOR CLIENT REVIEW  
SUBMISSION 5: 2021-09-23 E.J.H.  
FOR PERMITTING

PROJ. MGR: DUNTON RWD  
DRAWN BY: DUNTON E.J.H.  
CHECKED BY: RWD  
SUBMISSION NO. 5  
SURVEY DATE: N/A  
SUBMISSION DATE: 2021-09-23  
SUBMITTED FOR: REVIEW

**NOT FOR CONSTRUCTION**  
**SEWER PLAN &  
PROFILE**



RICHARD W. DUNTON ME PE #12485

DRAWING NO.  
**C7.4**  
MLDC NO. 20-237