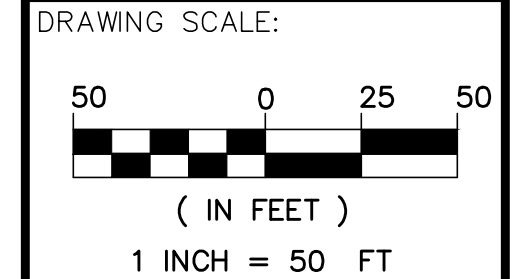


MAIN-LAND
DEVELOPMENT
CONSULTANTS, INC.
69 MAIN ST. LIVERMORE FALLS, MAINE
367 US ROUTE 1 FALMOUTH, MAINE
PH: (207) 897-6752 FAX: (207) 897-5404
WWW.MAIN-LANDDCI.COM

PROJECT
**BOYNE RESORTS
WEST MOUNTAIN
EXPANSION**
NEAR WEST MOUNTAIN ROAD,
SUGARLOAF SKI RESORT
OWNER OF RECORD
BOYNE RESORTS
5092 ACCESS ROAD,
CARRABASSETT VALLEY, MAINE

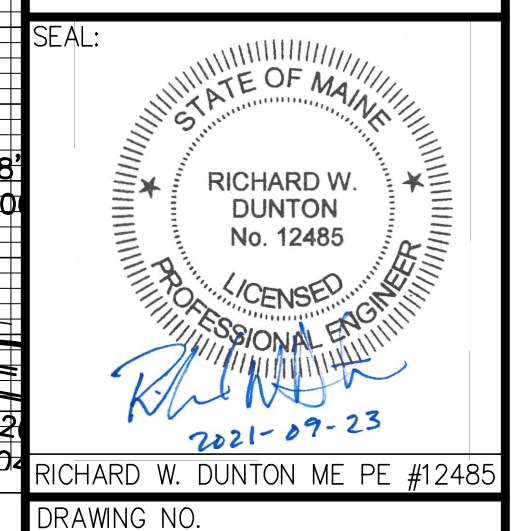
MADE FOR
**VANASSE HANGEN
BRUSTLIN, INC.**
40 IDX DRIVE, BUILDING 100, SUITE
200, SOUTH BURLINGTON, VT



SUBMISSION NOTES:
SUBMISSION 1: 2021-04-16 E/JH
REVISION FOR CLIENT REVIEW
SUBMISSION 2: 2021-08-12 E/JH
REVISION FOR INTERNAL REVIEW
SUBMISSION 3: 2021-09-03 E/JH
REVISION FOR CLIENT REVIEW
SUBMISSION 4: 2021-09-23 E/JH
FOR PERMITTING

PROJ. MGR: RWD
DRAWN BY: E/JH
CHECKED BY: RWD
SUBMISSION NO. 4
SURVEY DATE: N/A
SUBMISSION DATE: 2021-09-23
SUBMITTED FOR: REVIEW
NOT FOR CONSTRUCTION

**SEWER PLAN &
PROFILE**



DRAWING NO. **C7.1**
MLDC NO. 20-237