

PISGAH MOUNTAIN LLC
PISGAH MOUNTAIN WIND ENERGY
CLIFTON, MAINE

RSE File No.: 100413/2.5.5.2

Predicted Sound Levels (dBA) from Nearest Wind Turbine			
Receiver No.	4000 ft.	Receiver No.	1.5 miles
R1	37	R2	29
R3	37	R4	30
R5	35	R6	30
R7	33	R8	26
R9	34	R10	31
R11	38	R12	31
R13	33	R14	30
R15	37	R16	30



Scale 1 : 20000

- > 20.0 dB(A)
- > 25.0 dB(A)
- > 30.0 dB(A)
- > 35.0 dB(A)
- > 40.0 dB(A)
- > 45.0 dB(A)
- > 50.0 dB(A)
- > 55.0 dB(A)
- > 60.0 dB(A)
- > 65.0 dB(A)

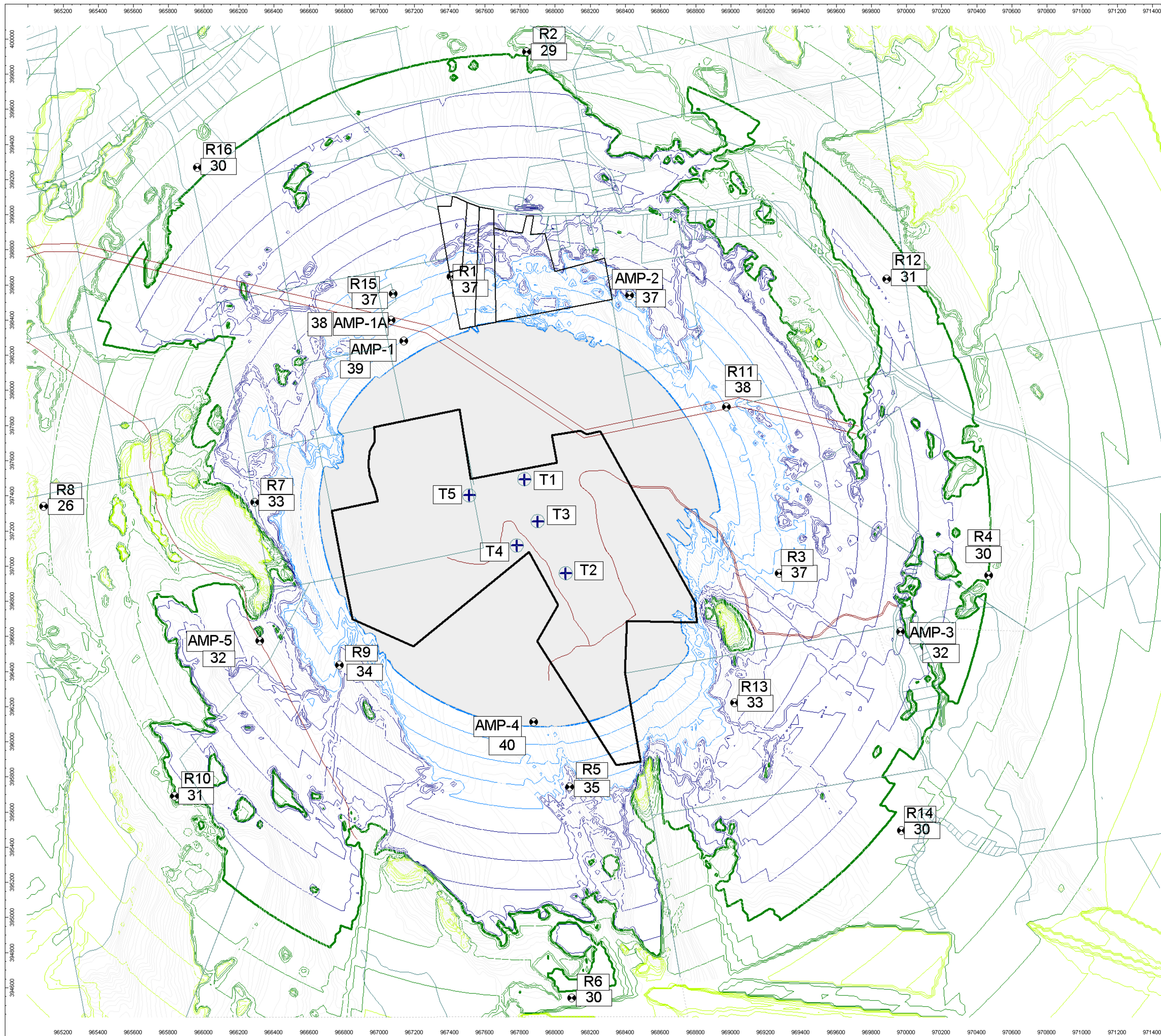
AMP = Pre-Development Ambient Monitoring Position



P O BOX K
30 PARKERS WAY
BRUNSWICK, MAINE 04011
Phone (207) 725-7896
Fax (207) 729-6245
email rse@rsemaine.com
www.resourcesystemsengineering.com
Copyright 2010

Date: 26.10.10 RSE File: 10.26.10 Final PISGAH Sound Model (5) GE 2.5xl.cna

Program: CadnaA by Datakustik, Munich Standard: ISO 9613.2



**PISGAH MOUNTAIN LLC
PISGAH MOUNTAIN WIND ENERGY
CLIFTON, MAINE**

RSE File No.: 100413/2.5.5.2

Predicted Sound Levels (dBA) from Nearest Wind Turbine			
Receiver No.	4000 ft.	Receiver No.	1.5 miles
R1	37	R2	29
R3	37	R4	30
R5	35	R6	30
R7	33	R8	26
R9	34	R10	31
R11	38	R12	31
R13	33	R14	30
R15	37	R16	30



Scale 1 : 20000

- > 20.0 dB(A)
- > 25.0 dB(A)
- > 30.0 dB(A)
- > 35.0 dB(A)
- > 40.0 dB(A)
- > 45.0 dB(A)
- > 50.0 dB(A)
- > 55.0 dB(A)
- > 60.0 dB(A)
- > 65.0 dB(A)

AMP = Pre-Development Ambient Monitoring Position



P O BOX K
30 PARKERS WAY
BRUNSWICK, MAINE 04011
Phone (207) 725-7896
Fax (207) 729-6245
email rse@rsemaine.com
www.resourcesystemsengineering.com
Copyright 2010

Date: 26.10.10 RSE File: 10.26.10 Final PISGAH Sound Model (5) GE 2.5xl.cna

Program: CadnaA by Datakustik, Munich Standard: ISO 9613.2

