

# **APPENDIX**

**JESSICA DAMON, PROJECT MANAGER  
DEPARTMENT OF ENVIRONMENTAL PROTECTION  
106 HOGAN ROAD  
BANGOR, MAINE 04401**

**Re: SILVER MAPLE WIND PROJECT  
COMMENTS FROM TERESA DAVIS DATED 3/25/2020**

## BOTANIC FEATURES

Outstanding botanical features: 24 lakes; 22,191 surface acres

Significant botanical features: 30 lakes; 47,266 surface acres

Rare aquatic or semi-aquatic shrubs including Clethra alnifolia, Ilex laevigata, Viburnum edule, and Lonicera oblongifolia were found associated with nineteen lakes. Most of these shrubs grow in shallow wetlands. Lakes supporting any of these rare shrubs were rated "outstanding" for botanical features. Other lakes rated outstanding possessed true aquatic plants like Potamogeton pulcher, P. vaseyi, P. confervoides, and Nymphaea tetragona.

Other important lake-related botanic features included five old growth forest areas, a variety of rare sedges, orchids, and shrubs, and seven additional species of true aquatic plants that are rare within Maine. Lakes with any of these features were rated "significant".

## SCENIC QUALITY

Outstanding scenic quality: 26 lakes; 6,204 surface acres

Significant scenic quality: 40 lakes; 36,558 surface acres

Lakes with outstanding scenic quality were typically undeveloped and surrounded by areas of high and complex relief. At these lakes the surrounding terrain creates a visually pleasing setting by contrasting with the flat aspect of a lake surface and the openness of the sky. Irregular shorelines and islands in lakes add to the overall visual diversity and scenic beauty.

Lakes with significant scenic quality possessed the same general features as the outstanding lakes, but in smaller proportions. Several lakes in the significant category would have been rated outstanding had they been undeveloped.

Three areas in the organized townships contain especially scenic lakes:

- o Approximately 10 miles east of Bangor, 11 lakes are clustered around a small series of mountains and large hills. The surrounding terrain is relatively flat, making the mountains appear even larger. In addition, these lakes contain irregular shorelines, islands, rockslides and beaches. All of these features create a visually pleasing setting.
- o North of Dover Foxcroft and south of Moosehead Lake lies a mountainous region full of spectacular lakes. Extremely clear water, lack of shoreline development, and highly complex surrounding relief, makes these lakes very scenic. Most of the surrounding mountains are forested, which adds to the scenic integrity of the region.



- o Lakes on Mount Desert Island, largely within Acadia National Park, are well known for their scenic beauty. These lakes are surrounded by towering rocky ridges and mountains which rise directly from the ocean. Mount Desert Island lakes have forested shorelines and little development.

A detailed description of this assessment of scenic lake features is contained in the report An Evaluation Of Scenic Quality On Lakes In Maine's Organized Towns completed as part of this project.

## SHORELINE CHARACTER

Outstanding shoreline character: 13 lakes; 31,821 surface acres

Significant shoreline character: 48 lakes; 38,276 surface acres

Extensive beaches, bouldered shores, and protruding ledges were the most common features observed along lakes rated as outstanding. Almost all of the best shorelines are undeveloped; the exception to this is Sebago Lake. Although this lake is extensively developed, it contains an abundance of accessible large sandy beaches, one of which is a barrier spit beach, a rare feature for Maine lakes. Seven lakes rated outstanding had rocky shores with large boulders. These lakes are all relatively undeveloped; most are easily accessible. Good potential for campsites exists at six of these seven lakes.

Fourteen lakes rated as significant contain open shorelines that offer potential for water access and campsites. Eleven lakes contain sand beaches varying from small pockets to large broad beaches. For instance, Lake George has 2 large broad beaches, although both sites are developed. Protruding, slab, and rocky shore bedrock features were observed on 11 of the 32 lakes with significant shoreline features.

Four lakes rated significant for shoreline character had features that were particularly noteworthy:

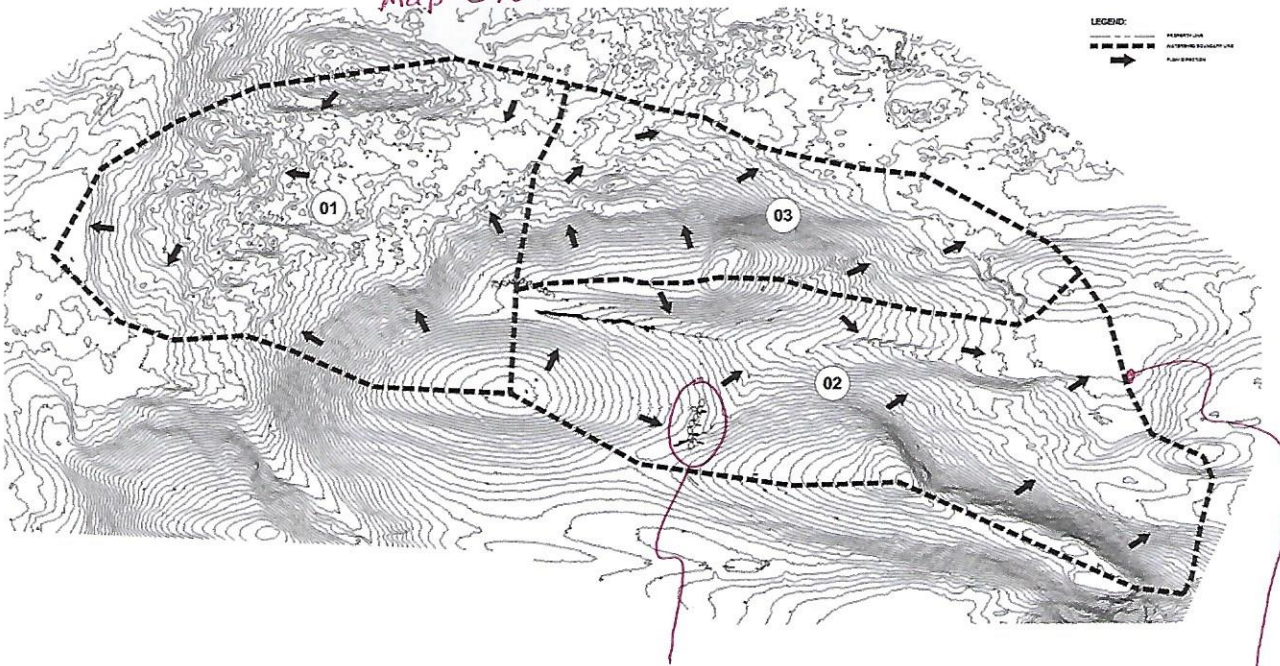
- o North Pond in Sumner, which has especially steep banks;
- o Forest Lake in Canton, which has large ledges;
- o Mine Pond in Porter, which has a rock slide; and
- o Joe's Pond in Rumford, which is located at a high elevation.

All four lakes are completely undeveloped.

A detailed description of the beach component of this assessment can be found in Lake Beaches in Maine's Organized Towns, prepared in conjunction with this project.



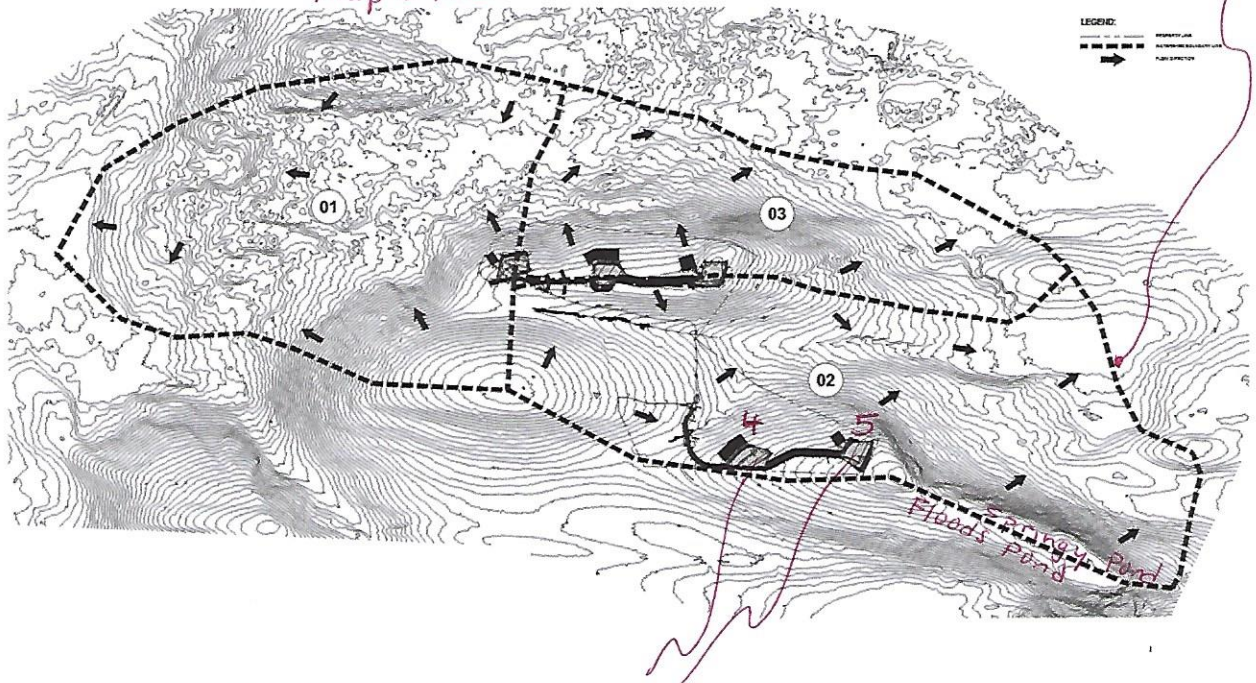
Map C701



What is this mapped feature?

Incorrect watershed boundary lines.

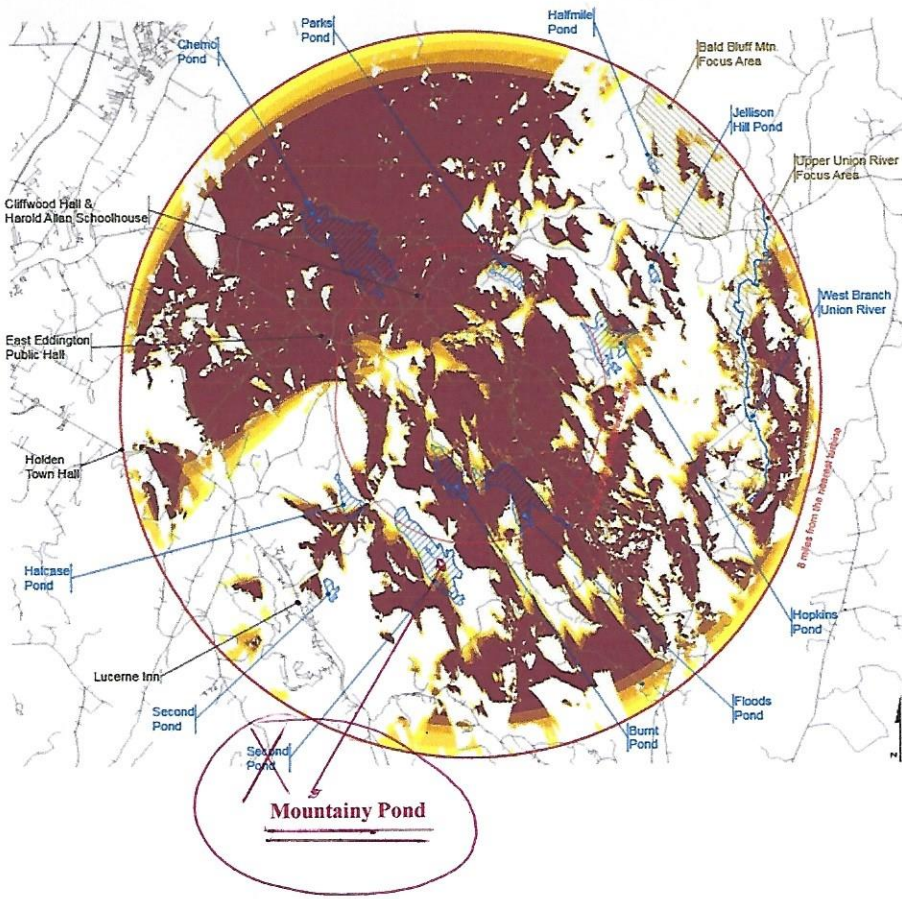
Map C702



Note proximity of Towers 4 and 5 to the watershed divide between Springy Pond and Floods Pond.

Applicant's north arrow is pointing east.  
North is this way.





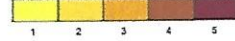
**Map 1**  
**Terrain Viewshed**  
**for Blade Tips**  
**Silver Maple Wind**  
**Project**

GIS viewshed mapping is a preliminary means of visual analysis. While beneficial for preliminary orientation and investigation, because of data assumptions and omissions, viewshed maps are not a definitive indication of visibility. Potential visibility needs to be confirmed through field investigation and other visualization techniques.

**Legend**

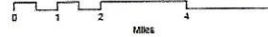
• Silver Maple Turbines

Number of Blade Tips Visible



Scenic Resources of State or National Significance

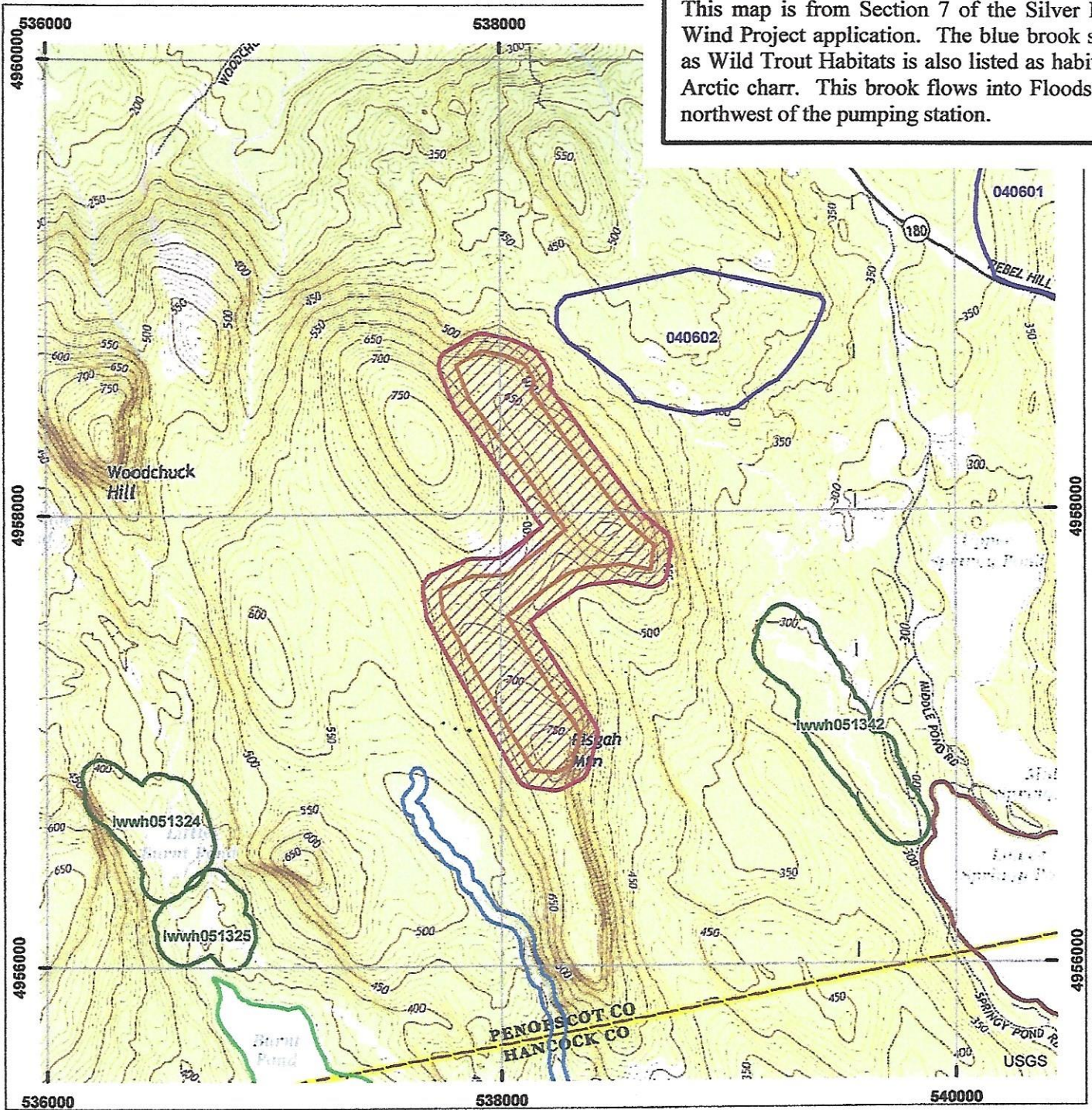
- Great Ponds & Rivers
- National Register of Historic Places
- Other Outstanding Natural Feature





**Comment Item No. 8**

This map is from Section 7 of the Silver Maple Wind Project application. The blue brook shown as Wild Trout Habitats is also listed as habitat for Arctic charr. This brook flows into Floods Pond northwest of the pumping station.

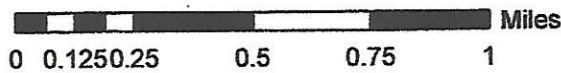


**Environmental Review of Fish and Wildlife Observations and Priority Habitats**

Project Name: Clifton, Silver Maple Wind (Version 2)



Maine Department of Inland Fisheries and Wildlife



Projection: UTM, NAD83, Zone 19N

Date: 6/6/2019

ProjectPoints	Deer Winter Area	Roseate Tern
ProjectLines	LUFC p-fw	Piping Plover/Least Tern
ProjectPolys	Cooperative DWAs	Aquatic ETS (2.5 mi review)
ProjectSearchAreas	Seabird Nesting Islands	Rare Mussels (5 mi review)
	Shorebird Areas	Maine Heritage Fish Waters
	Inland Waterfowl/Wading Bird	Arctic Charr Habitat
	2008 lwwh (Shoreland Zoning)	Redfin Pickerel/Swamp Darter Habitats (buffer100ft)
	Tidal Waterfowl/Wading Bird	Special Concern-occupied habitats(100ft buffer)
	Significant Vernal Pools	Wild Lake Trout Habitats
	Environmental Review Polygons	

