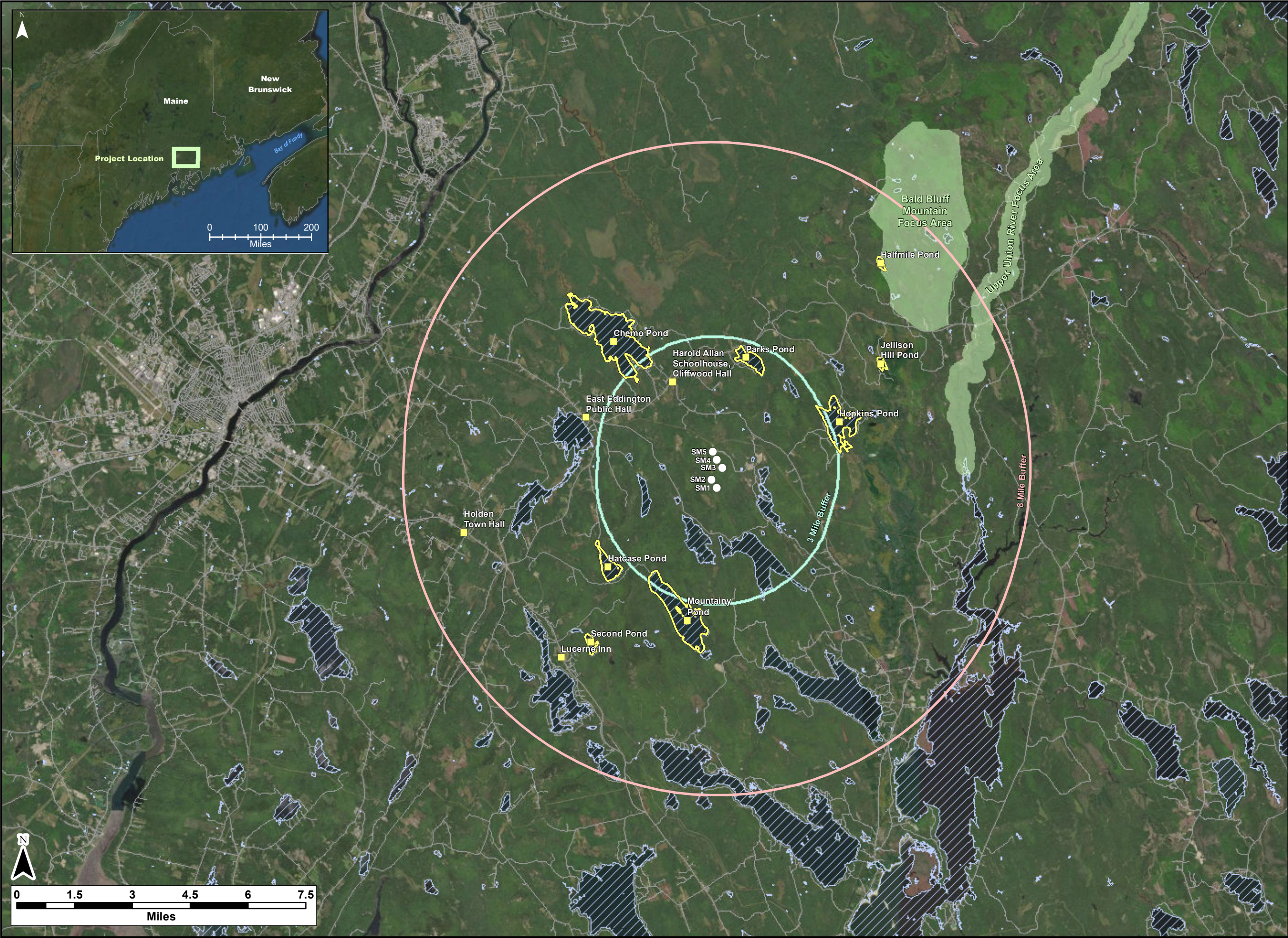


APPENDIX A
ALL SCENIC RESOURCES OF STATE OR NATIONAL
SIGNIFICANCE DRAWINGS



Notes:

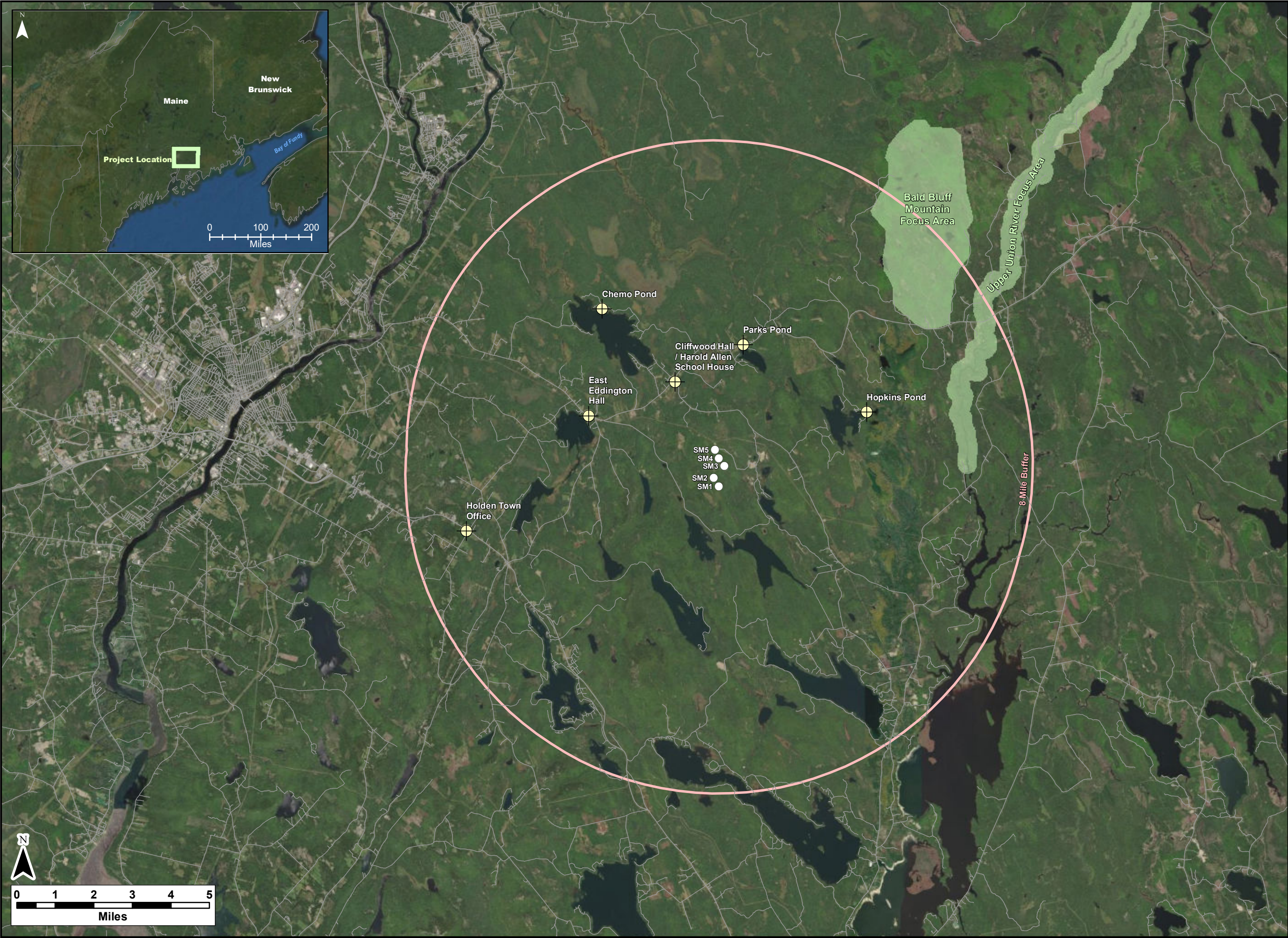
1. Data Sources: Maine Office of GIS, Client
2. Basemaps: Esri, DigitalGlobe, GeoEye, Earthstar Geographics, CNES/Airbus DS, USDA, USGS, AeroGRID, IGN, and the GIS User Community
3. Projection: NAD83 UTM Zone 19

- Legend:**
- Proposed Turbine Locations
 - Scenic Resource of State and National Significance
 - Roads - NG911
 - Conserved Lands Focus Areas
 - ▨ Lakes & Ponds
 - 3 Mile Buffer
 - 8 Mile Buffer

Silver Maple Wind Project Expansion - Scenic Resource of State and National Significance



Date:	Feb. 2020	Project #:	19-6780
Scale:	1:150,000	Drawing #:	A1
Drawn By:	M. Marriott		
Checked By:	S. Dickey		



Notes:

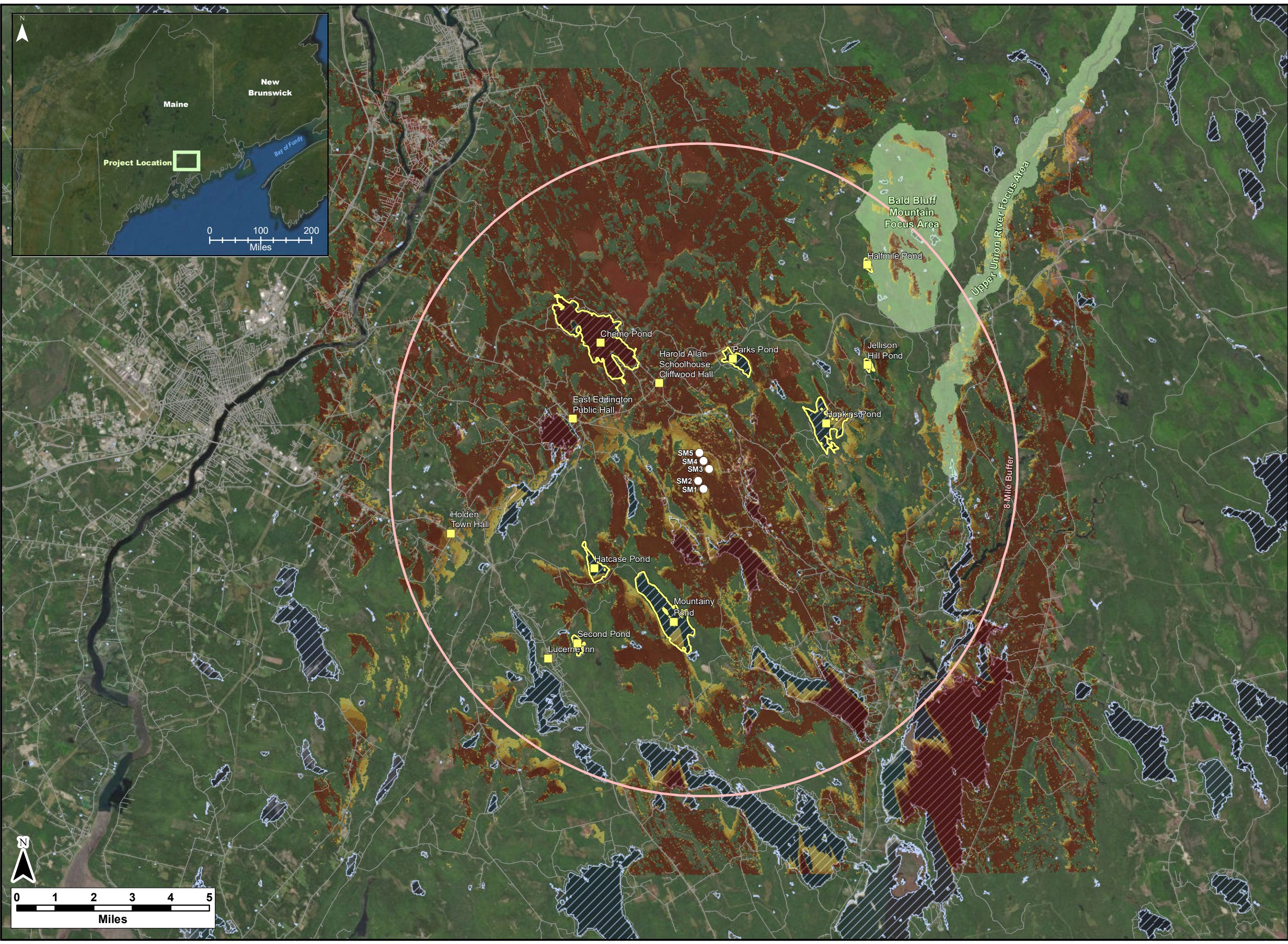
1. Data Sources: Maine Office of GIS, Client
2. Basemaps: Esri, DigitalGlobe, GeoEye, Earthstar Geographics, CNES/Airbus DS, USDA, USGS, AeroGRID, IGN, and the GIS User Community
3. Projection: NAD83 UTM Zone 19

- Legend:**
- Proposed Turbine Locations
 - ⊕ Camera Locations
 - Roads - NG911
 - 8 Mile Buffer
 - Conserved Lands Focus Areas

**Silver Maple Wind
Project Expansion -
Photosimulation
Camera Locations**


Strum
CONSULTING
Engineering * Surveying * Environmental
Bedford * Antigonish * Moncton * Deer Lake

Date: April 2020	Project #: 19-6780
Scale: 1:150,000	Drawing #:
Drawn By: M. Marriott	A2
Checked By: S. Dickey	



Notes:

1. Data Sources: Maine Office of GIS, Client
2. Basemaps: Esri, DigitalGlobe, GeoEye, Earthstar Geographics, CNES/Airbus DS, USDA, USGS, AeroGRID, IGN, and the GIS User Community
3. Projection: NAD83 UTM Zone 19


Legend:

- Proposed Turbine Locations
- Scenic Resource of State and National Significance
- Roads - NG911
- Conserved Lands Focus Areas
- Lakes & Ponds
- 8 Mile Buffer

Number of Visible Turbines

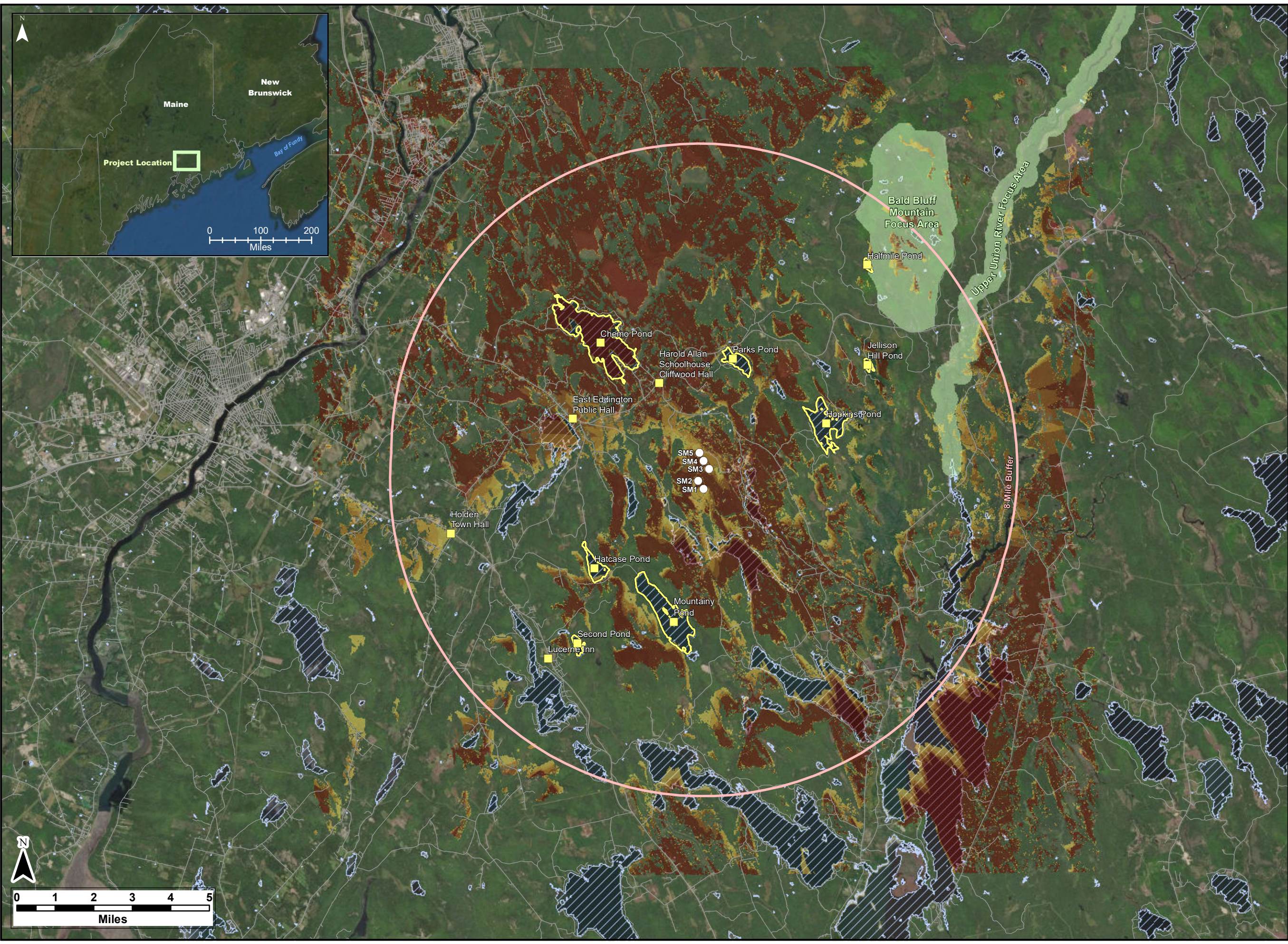
- 1
- 2
- 3
- 4
- 5

Silver Maple Wind Project - Viewshed (Bare Ground / 185 m total height)



Strum
CONSULTING
Engineering * Surveying * Environmental
Bedford * Antigonish * Moncton * St. John's

Date: Feb. 2020	Project #: 19-6780
Scale: 1:150,000	Drawing #:
Drawn By: M. Marriott	A3
Checked By: S. Dickey	



Notes:

1. Data Sources: Maine Office of GIS, Client
2. Basemaps: Esri, DigitalGlobe, GeoEye, Earthstar Geographics, CNES/Airbus DS, USDA, USGS, AeroGRID, IGN, and the GIS User Community
3. Projection: NAD83 UTM Zone 19

Legend:

- Proposed Turbine Locations
- Scenic Resource of State and National Significance
- Roads - NG911
- Conserved Lands Focus Areas
- Lakes & Ponds
- 8 Mile Buffer

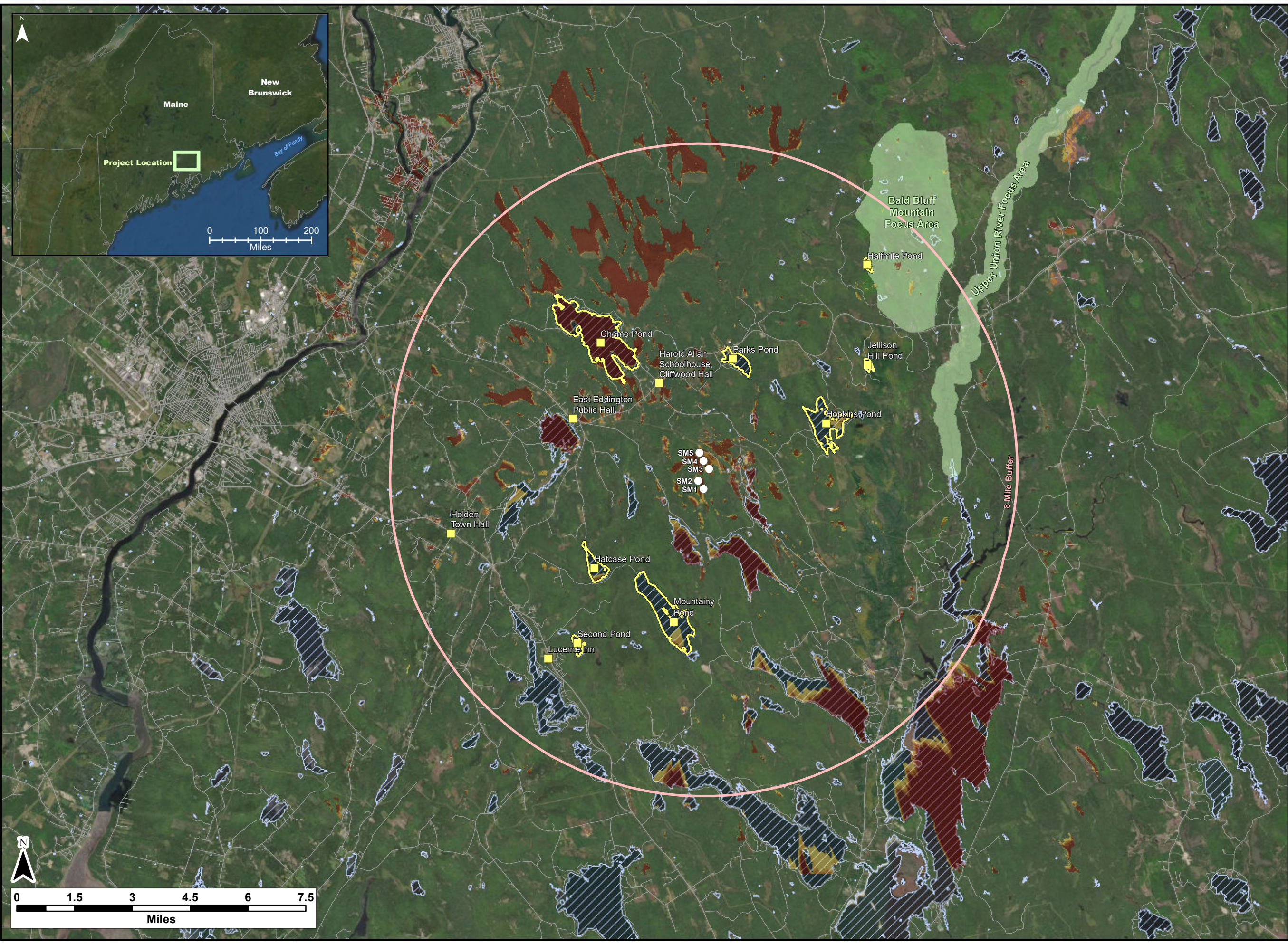
Number of Visible Turbines

- 1
- 2
- 3
- 4
- 5

Silver Maple Wind Project - Viewshed (Bare Ground / 117 m hub height)

Strum
CONSULTING
Engineering * Surveying * Environmental
Bedford * Antigonish * Moncton * St. John's

Date: Feb. 2020	Project #: 19-6780
Scale: 1:150,000	Drawing #:
Drawn By: M. Marriott	A4
Checked By: S. Dickey	



Notes:

1. Data Sources: Maine Office of GIS, Client
2. Basemaps: Esri, DigitalGlobe, GeoEye, Earthstar Geographics, CNES/Airbus DS, USDA, USGS, AeroGRID, IGN, and the GIS User Community
3. Projection: NAD83 UTM Zone 19

Legend:

- Proposed Turbine Locations
- Scenic Resource of State and National Significance
- Roads - NG911
- Conserved Lands Focus Areas
- Lakes & Ponds
- 8 Mile Buffer

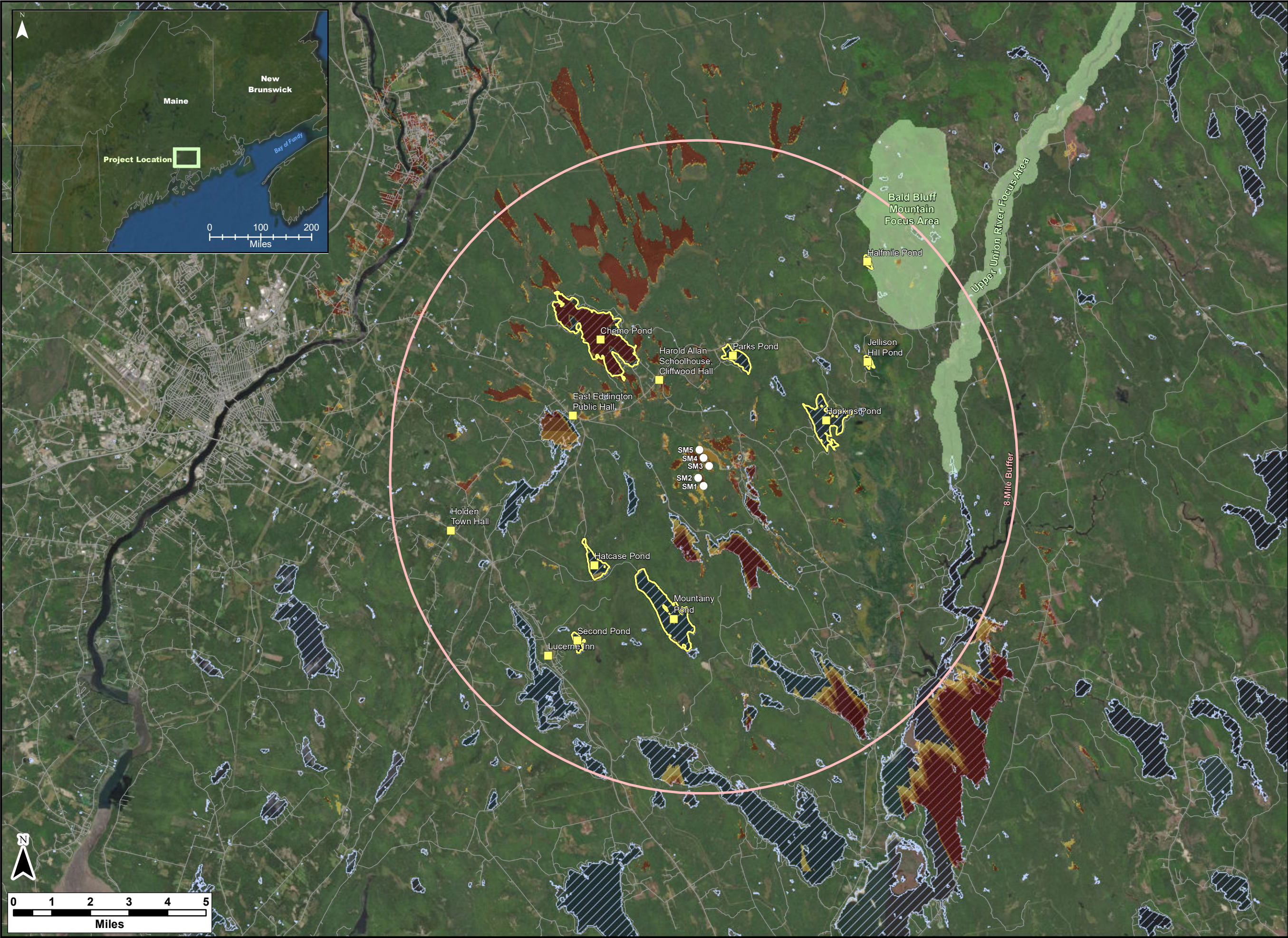
Number of Visible Turbines

1
2
3
4
5

Silver Maple Wind Project - Viewshed
(12 m or 40 ft Forest / 185 m total height)

Strum
CONSULTING
Engineering * Surveying * Environmental
Bedford * Antigonish * Moncton * St. John's

Date: Feb. 2020	Project #: 19-6780
Scale: 1:150,000	Drawing #:
Drawn By: M. Marriott	A5
Checked By: S. Dickey	



Notes:

1. Data Sources: Maine Office of GIS, Client
2. Basemaps: Esri, DigitalGlobe, GeoEye, Earthstar Geographics, CNES/Airbus DS, USDA, USGS, AeroGRID, IGN, and the GIS User Community
3. Projection: NAD83 UTM Zone 19

Legend:

- Proposed Turbine Locations
- Scenic Resource of State and National Significance
- Roads - NG911
- Conserved Lands Focus Areas
- Lakes & Ponds
- 8 Mile Buffer

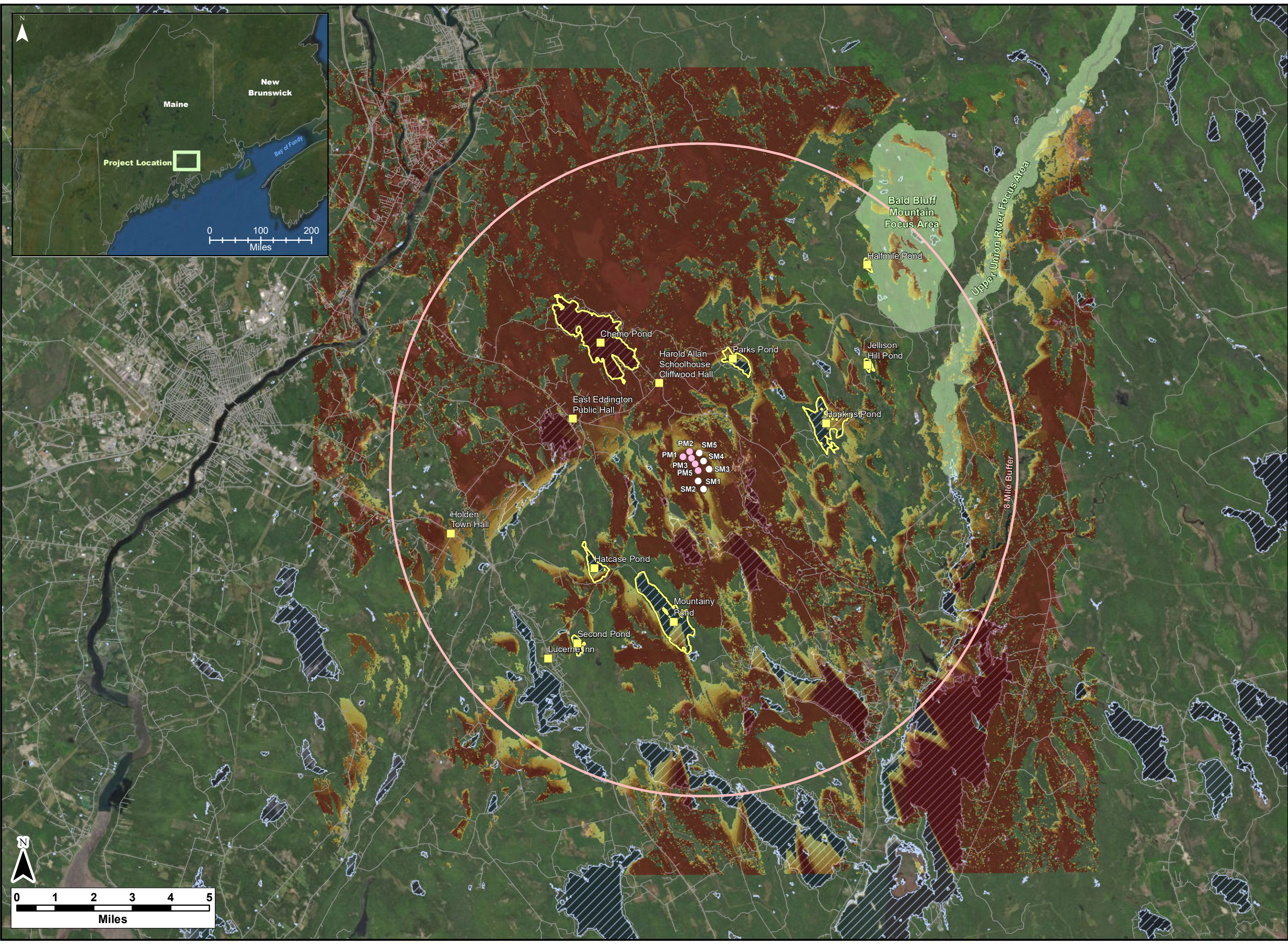
Number of Visible Turbines

- 1
- 2
- 3
- 4
- 5

Silver Maple Wind Project - Viewshed
(12 m or 40 ft Forest / 117 m hub height)

Strum
CONSULTING
Engineering * Surveying * Environmental
Bedford * Antigonish * Moncton * St. John's

Date: Feb. 2020	Project #: 19-6780
Scale: 1:150,000	Drawing #: A6
Drawn By: M. Marriott	
Checked By: S. Dickey	



Notes:

1. Data Sources: Maine Office of GIS, Client
2. Basemaps: Esri, DigitalGlobe, GeoEye, Earthstar Geographics, CNES/Airbus DS, USDA, USGS, AeroGRID, IGN, and the GIS User Community
3. Projection: NAD83 UTM Zone 19

Legend:

- Pisgah Mountain Turbines
- Proposed Silver Mountain Turbines
- Scenic Resource of State and National Significance
- Roads - NG911
- Conserved Lands Focus Areas
- Lakes & Ponds
- 8 Mile Buffer

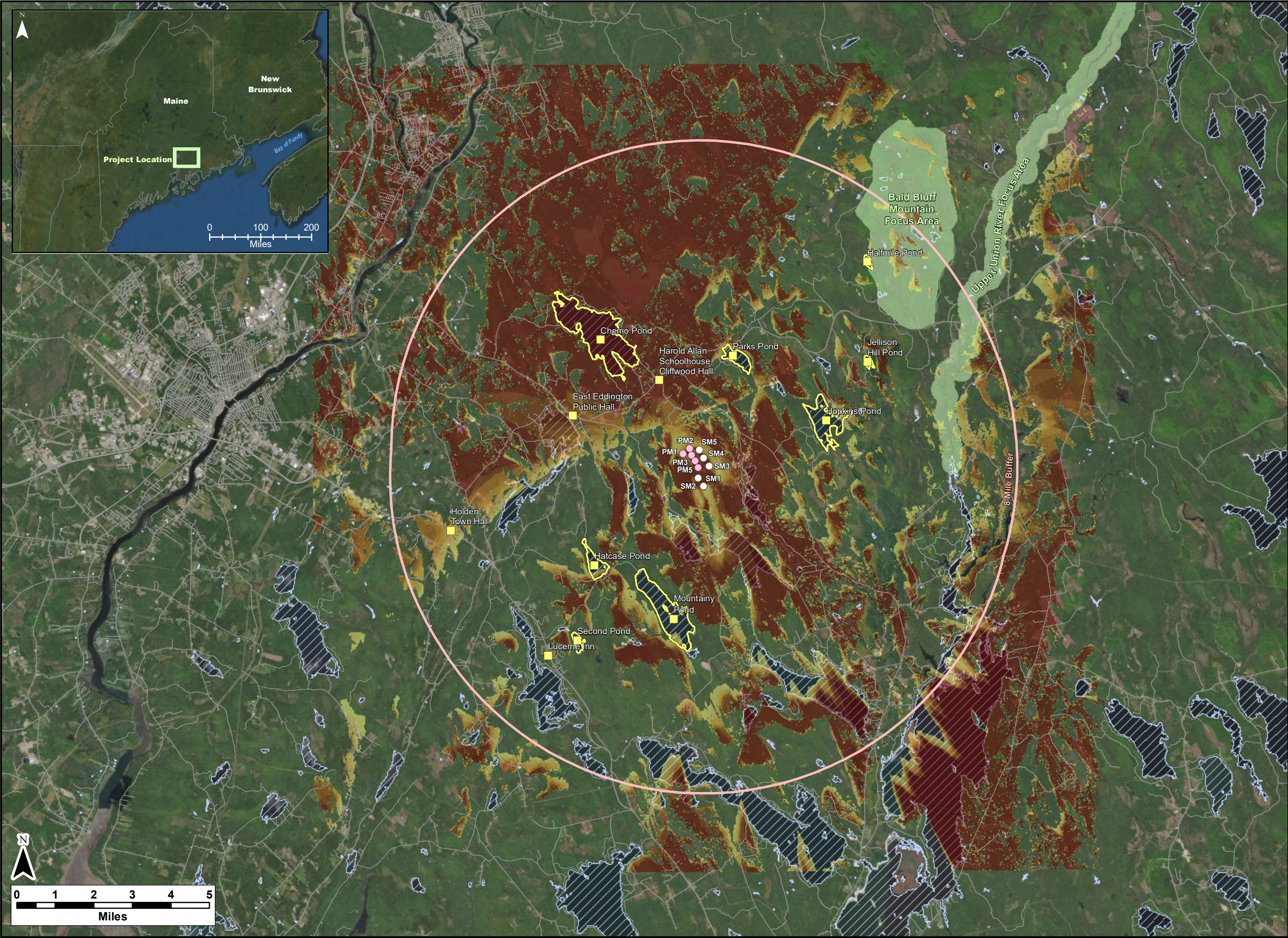
Number of Visible Turbines

	1
	2
	3
	4
	5
	6
	7
	8
	9
	10

Silver Maple Wind Project - Viewshed
All Turbines
(Bare Ground / 185 m & 145 m total heights)

Strum
CONSULTING
Engineering * Surveying * Environmental
Bedford * Antigonish * Moncton * St. John's

Date: Feb. 2020	Project #: 19-6780
Scale: 1:150,000	Drawing #: A7
Drawn By: M. Marriott	
Checked By: S. Dickey	



Notes:

1. Data Sources: Maine Office of GIS, Client
2. Basemaps: Esri, DigitalGlobe, GeoEye, Earthstar Geographics, CNES/Airbus DS, USDA, USGS, AeroGRID, IGN, and the GIS User Community
3. Projection: NAD83 UTM Zone 19

Legend:

- Pisgah Mountain Turbines
- Proposed Silver Mountain Turbines
- Scenic Resource of State and National Significance
- Roads - NG911
- Conserved Lands Focus Areas
- Lakes & Ponds
- 8 Mile Buffer

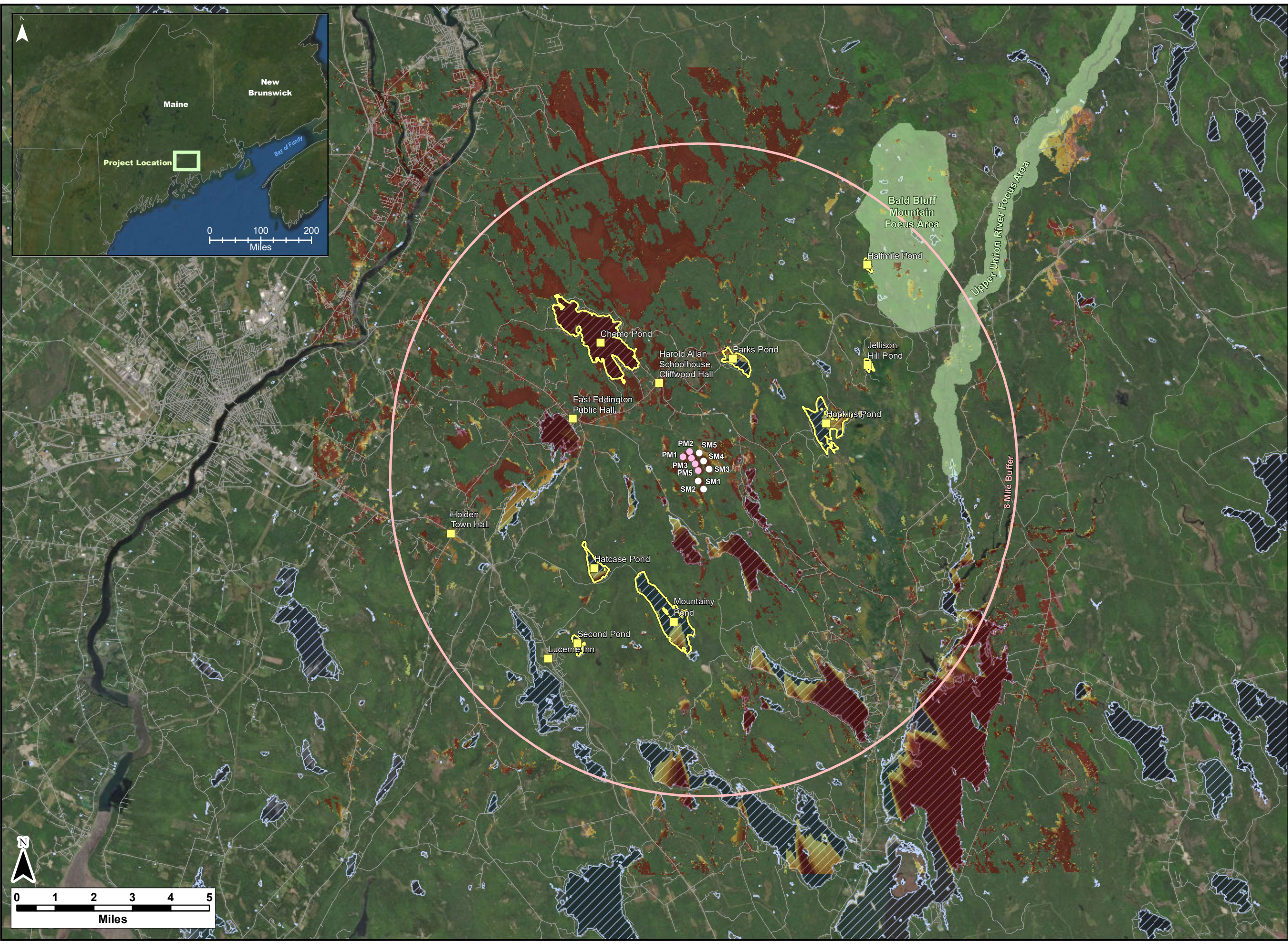
Number of Visible Turbines

1
2
3
4
5
6
7
8
9
10

Silver Maple Wind Project - Viewshed
All Turbines
(Bare Ground / 117 m & 95 m hub heights)

Strum
CONSULTING
Engineering * Surveying * Environmental
Bedford * Antigonish * Moncton * St. John's

Date: Feb. 2020	Project #: 19-6780
Scale: 1:150,000	Drawing #: A8
Drawn By: M. Marriott	
Checked By: S. Dickey	



Notes:

1. Data Sources: Maine Office of GIS, Client
2. Basemaps: Esri, DigitalGlobe, GeoEye, Earthstar Geographics, CNES/Airbus DS, USDA, USGS, AeroGRID, IGN, and the GIS User Community
3. Projection: NAD83 UTM Zone 19

Legend:

- Pisgah Mountain Turbines
- Proposed Silver Mountain Turbines
- Scenic Resource of State and National Significance
- Roads - NG911
- Conserved Lands Focus Areas
- Lakes & Ponds
- 8 Mile Buffer

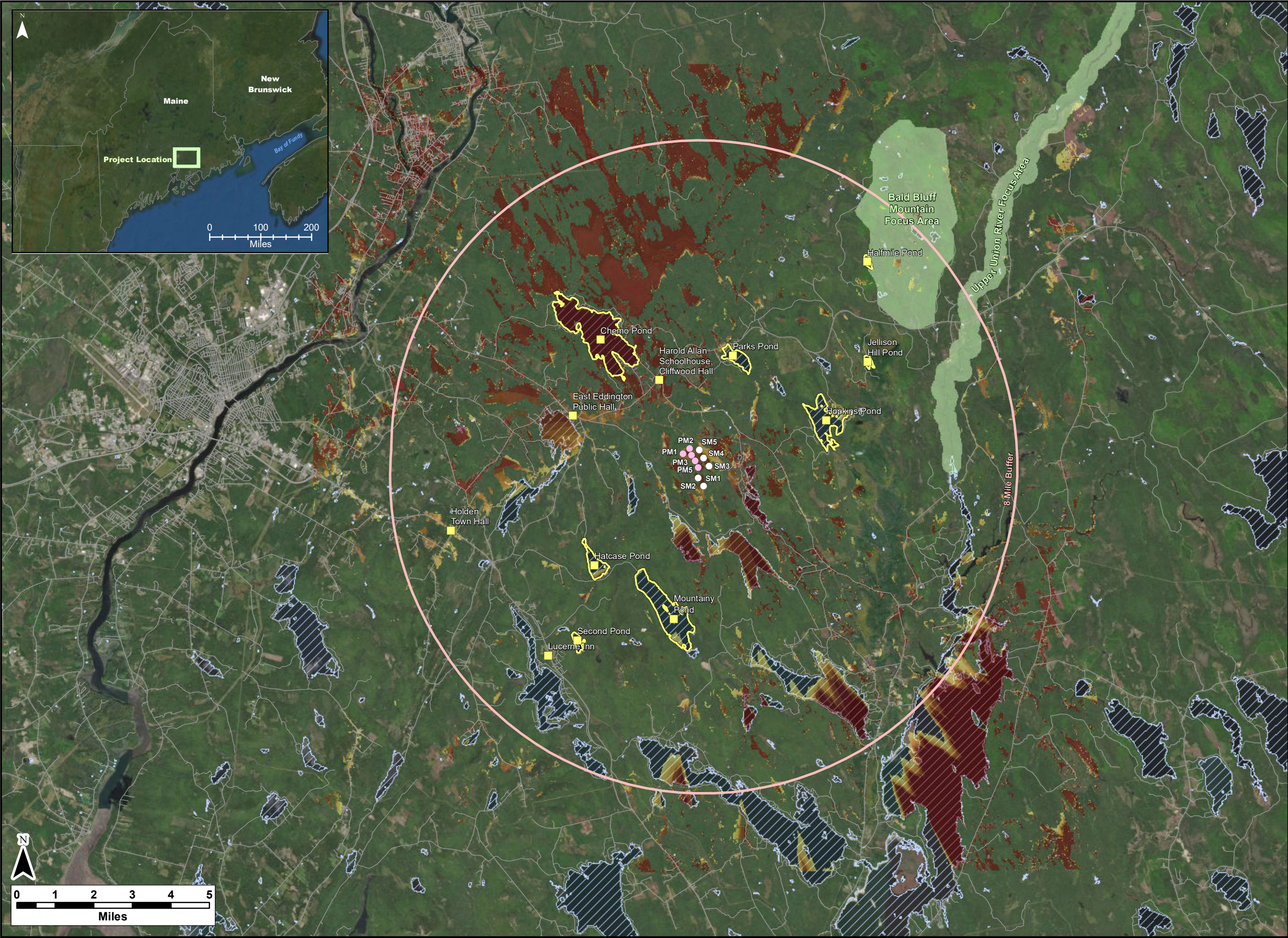
Number of Visible Turbines

1
2
3
4
5
6
7
8
9
10

Silver Maple Wind Project - Viewshed
All Turbines (12 m or 40ft Forest) / 185 m & 145 m total heights)

Strum
CONSULTING
Engineering * Surveying * Environmental
Bedford * Antigonish * Moncton * St. John's

Date: Feb. 2020	Project #: 19-6780
Scale: 1:150,000	Drawing #: A9
Drawn By: M. Marriott	
Checked By: S. Dickey	



Notes:

1. Data Sources: Maine Office of GIS, Client
2. Basemaps: Esri, DigitalGlobe, GeoEye, Earthstar Geographics, CNES/Airbus DS, USDA, USGS, AeroGRID, IGN, and the GIS User Community
3. Projection: NAD83 UTM Zone 19

Legend:

- Pisgah Mountain Turbines
- Proposed Silver Mountain Turbines
- Scenic Resource of State and National Significance
- Roads - NG911
- Conserved Lands Focus Areas
- Lakes & Ponds
- 8 Mile Buffer

Number of Visible Turbines

1
2
3
4
5
6
7
8
9
10

Silver Maple Wind Project - Viewshed
All Turbines (12 m or 40ft Forest) / 117 m & 95 m hub heights)

Strum
CONSULTING
Engineering * Surveying * Environmental
Bedford * Antigonish * Moncton * St. John's

Date: Feb. 2020	Project #: 19-6780
Scale: 1:150,000	Drawing #: A10
Drawn By: M. Marriott	
Checked By: S. Dickey	