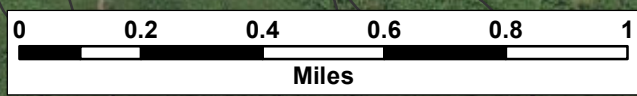
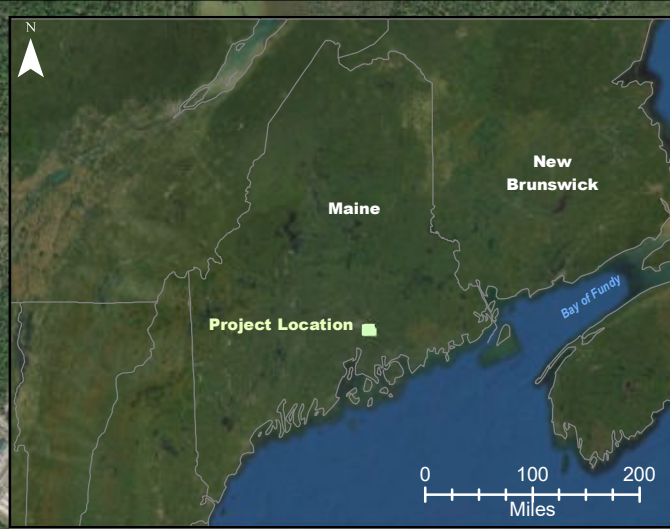


APPENDIX J  
HOLDEN TOWN HALL

---



**Notes:**  
 1. Data Sources: Maine Office of GIS, Client  
 2. Basemaps: Esri, DigitalGlobe, GeoEye, Earthstar Geographics, CNES/Airbus DS, USDA, USGS, AeroGRID, IGN, and the GIS User Community  
 3. Projection: NAD83 UTM Zone 19

**Legend:**  
 — Elevation (100 ft)  
 — Roads - NG911

**Silver Maple Wind Project - Holden Town Hall Existing Character of Surrounding Area**

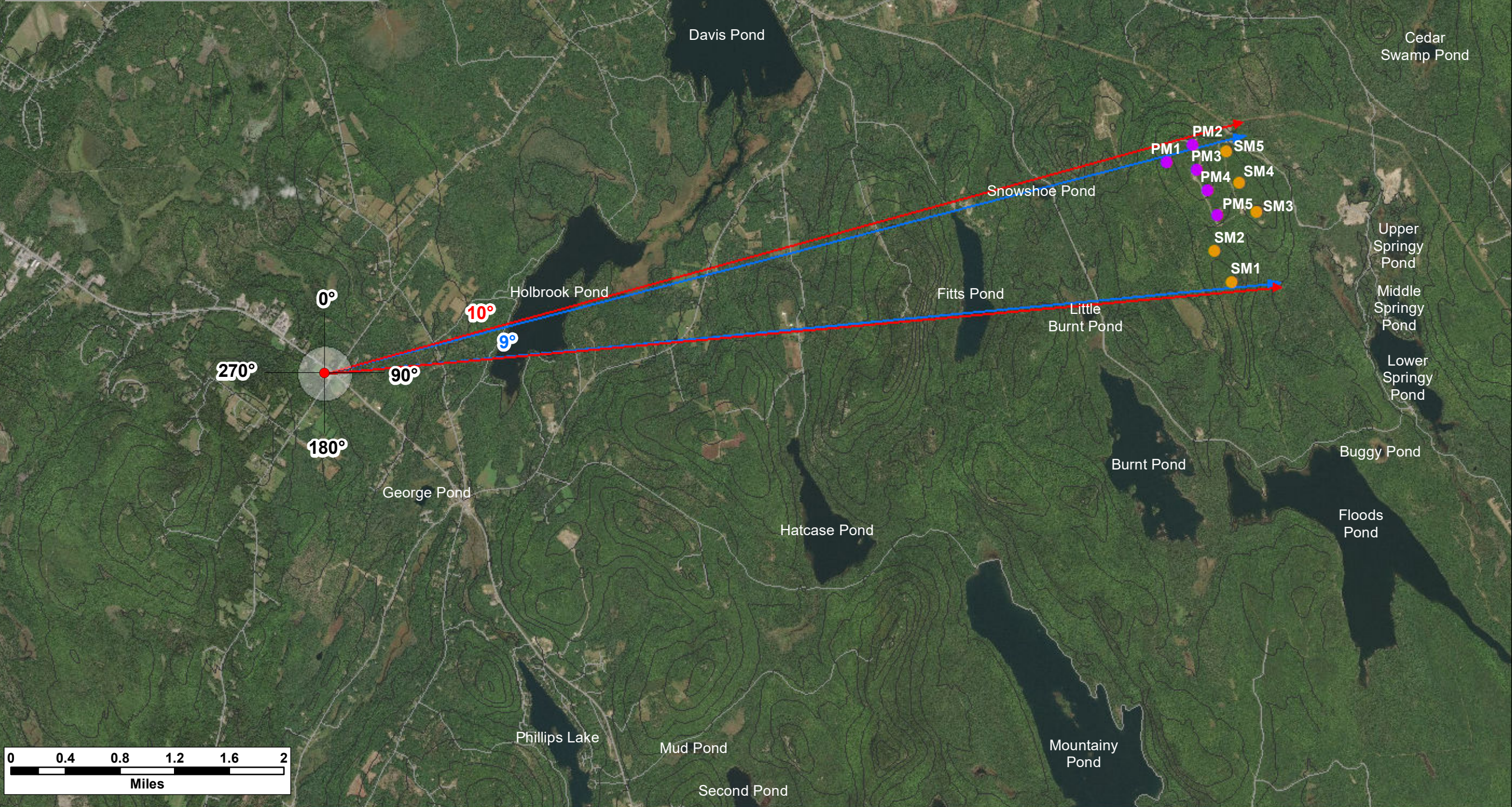


Date: April 2020	Project #: 19-6780
Scale: 1:20,000	Drawing #:  <b>J1</b>
Drawn By: M. Savelle	
Checked By: S. Dickey	



**Notes:**  
 1. Data Sources: Maine Office of GIS, Client  
 2. Basemaps: Esri, DigitalGlobe, GeoEye, Earthstar Geographics, CNES/Airbus DS, USDA, USGS, AeroGRID, IGN, and the GIS User Community  
 3. Projection: NAD83 UTM Zone 19

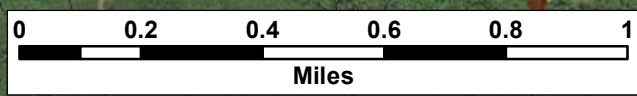
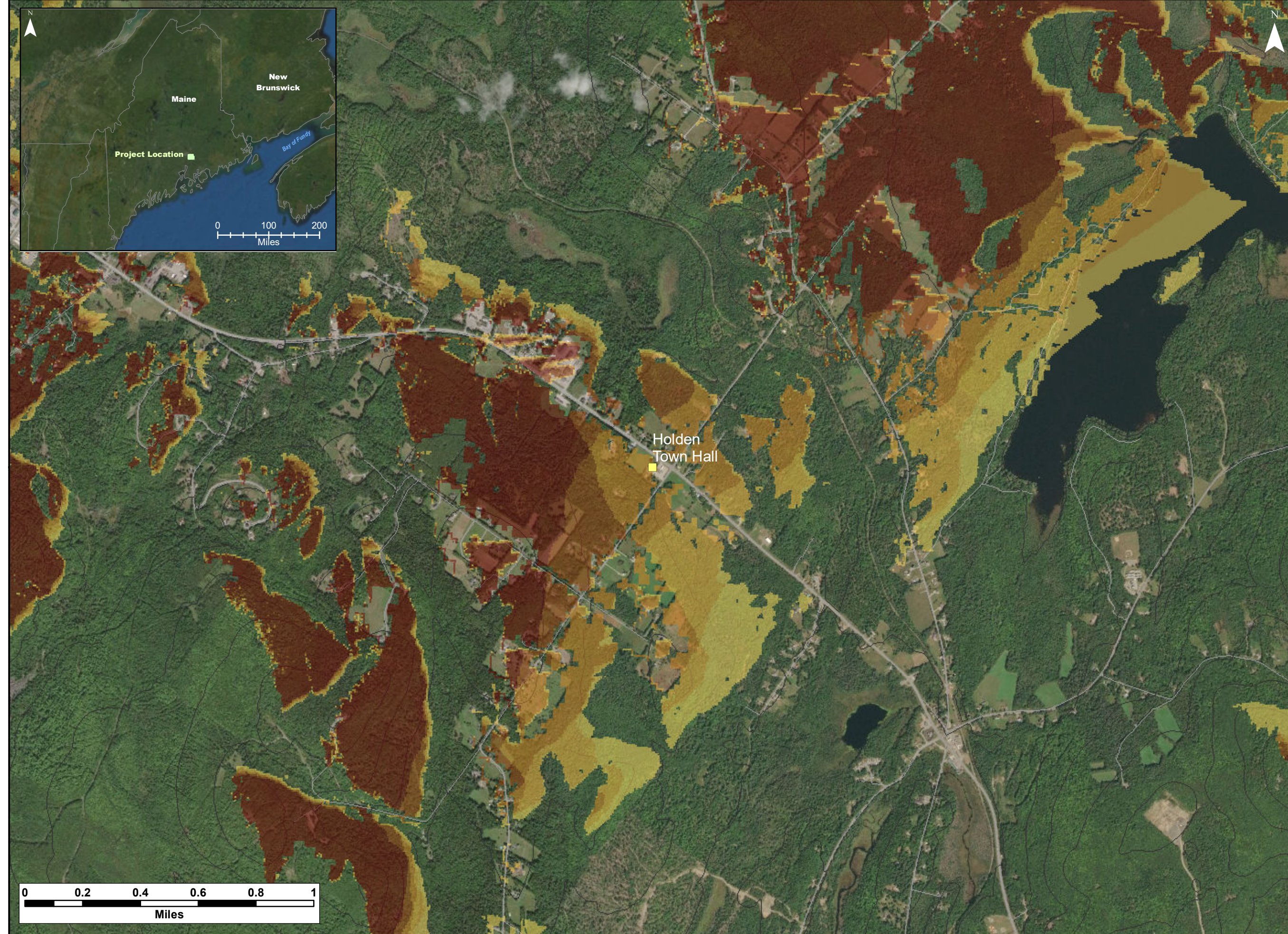
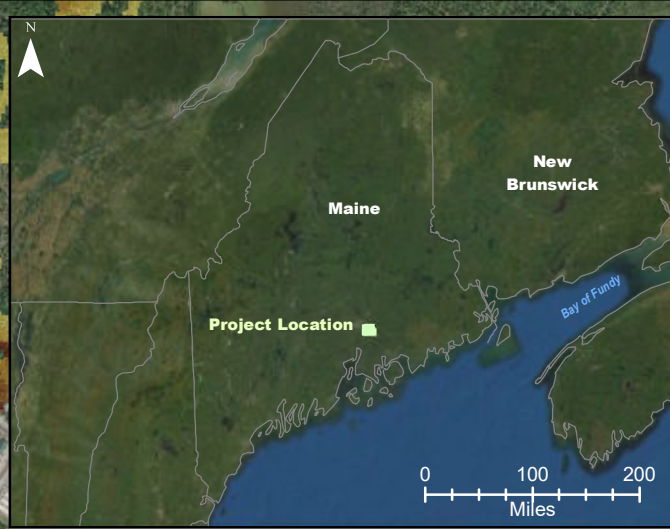
- Legend:**
- Pisgah Mountain Turbine (Existing)
  - Silver Maple Wind Turbine (Proposed)
  - Elevation (100 ft)
  - Roads - NG911
  - High Visual Impact Investigation Area
  - Horizontal View Angle - Silver Maple and Pisgah Mountain Turbines
  - Horizontal View Angle - Silver Maple Turbines



**Silver Maple Wind  
Project - Holden  
Town Hall**

**Strum**  
CONSULTING  
Engineering \* Surveying \* Environmental  
Bedford \* Antigonish \* Moncton \* St. John's

Date: April 2020	Project #: 19-6780
Scale: 1:50,000	Drawing #: <b>J2</b>
Drawn By: M. Savelle	<b>J2</b>
Checked By: S. Dickey	



**Notes:**  
 1. Data Sources: Maine Office of GIS, Client  
 2. Basemaps: Esri, DigitalGlobe, GeoEye, Earthstar Geographics, CNES/Airbus DS, USDA, USGS, AeroGRID, IGN, and the GIS User Community  
 3. Projection: NAD83 UTM Zone 19

**Legend:**  
 ■ SRSNS  
 — Elevation (100 ft)  
 — Roads - NG911

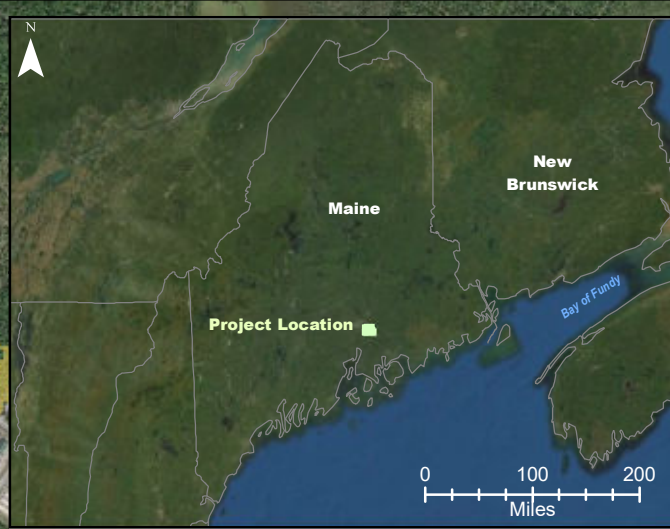
**Number of Visible Turbines**

1
2
3
4
5

**Silver Maple Wind Project - Viewshed Holden Town Hall (Bare Ground / 185 m total height)**



Date: May 2020	Project #: 19-6780
Scale: 1:20,000	Drawing #:  <b>J3</b>
Drawn By: M. Savelle	
Checked By: S. Dickey	

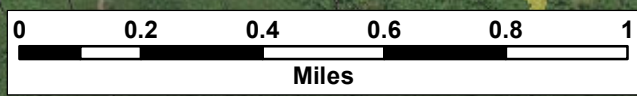
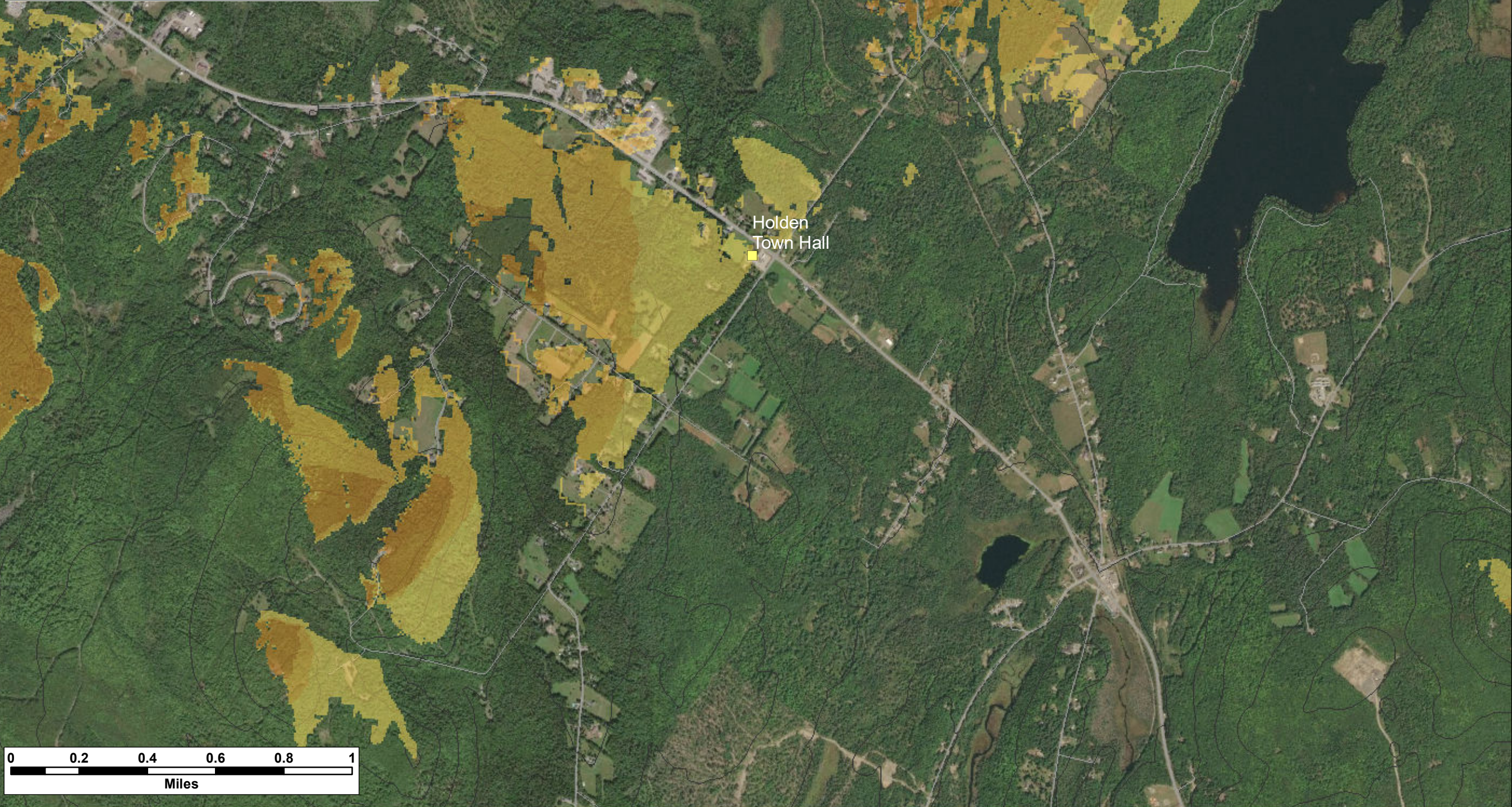


**Notes:**  
 1. Data Sources: Maine Office of GIS, Client  
 2. Basemaps: Esri, DigitalGlobe, GeoEye, Earthstar Geographics, CNES/Airbus DS, USDA, USGS, AeroGRID, IGN, and the GIS User Community  
 3. Projection: NAD83 UTM Zone 19

**Legend:**  
 ■ SRSNS  
 — Elevation (100 ft)  
 — Roads - NG911

**Number of Visible Turbines**

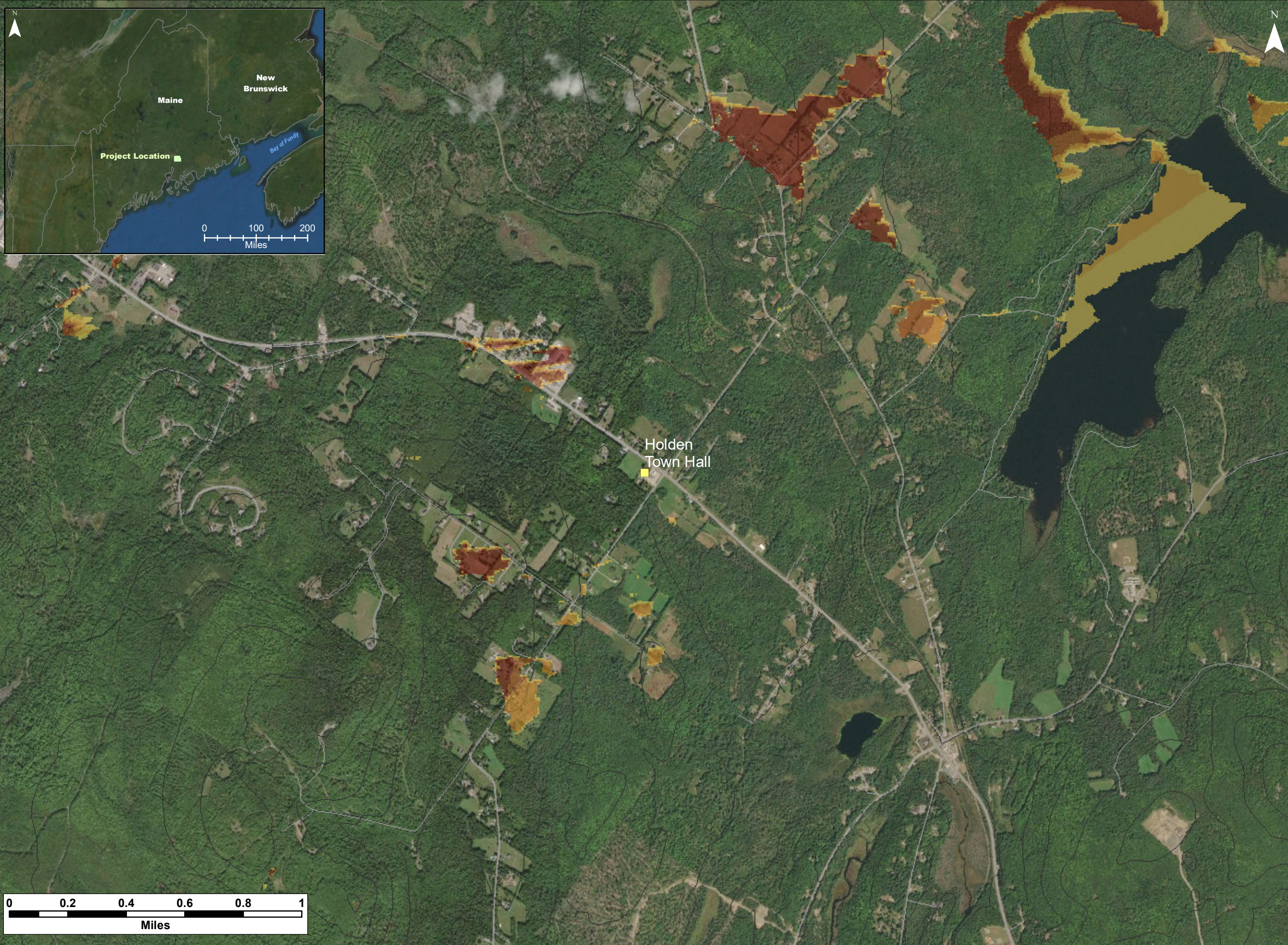
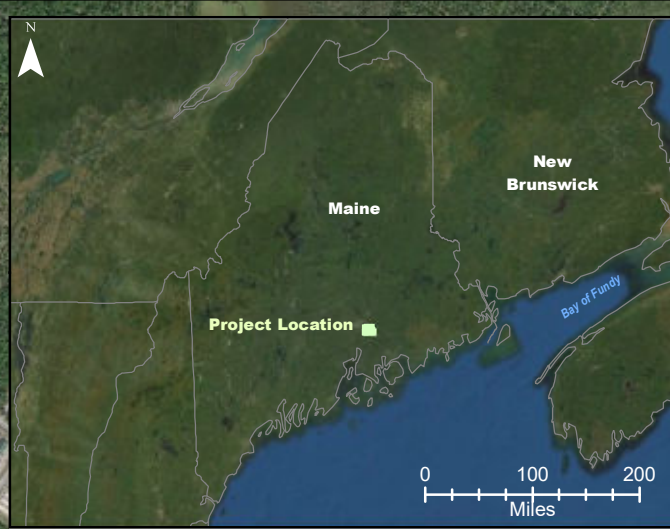
1
2
3
4
5



**Silver Maple Wind Project - Viewshed Holden Town Hall (Bare Ground / 117 m total height)**



Date: May 2020	Project #: 19-6780
Scale: 1:20,000	Drawing #:  <b>J4</b>
Drawn By: M. Savelle	
Checked By: S. Dickey	



**Notes:**  
 1. Data Sources: Maine Office of GIS, Client  
 2. Basemaps: Esri, DigitalGlobe, GeoEye, Earthstar Geographics, CNES/Airbus DS, USDA, USGS, AeroGRID, IGN, and the GIS User Community  
 3. Projection: NAD83 UTM Zone 19

**Legend:**

- SRSNS
- Elevation (100 ft)
- Roads - NG911

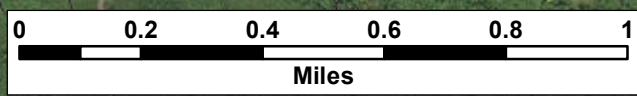
**Number of Visible Turbines**

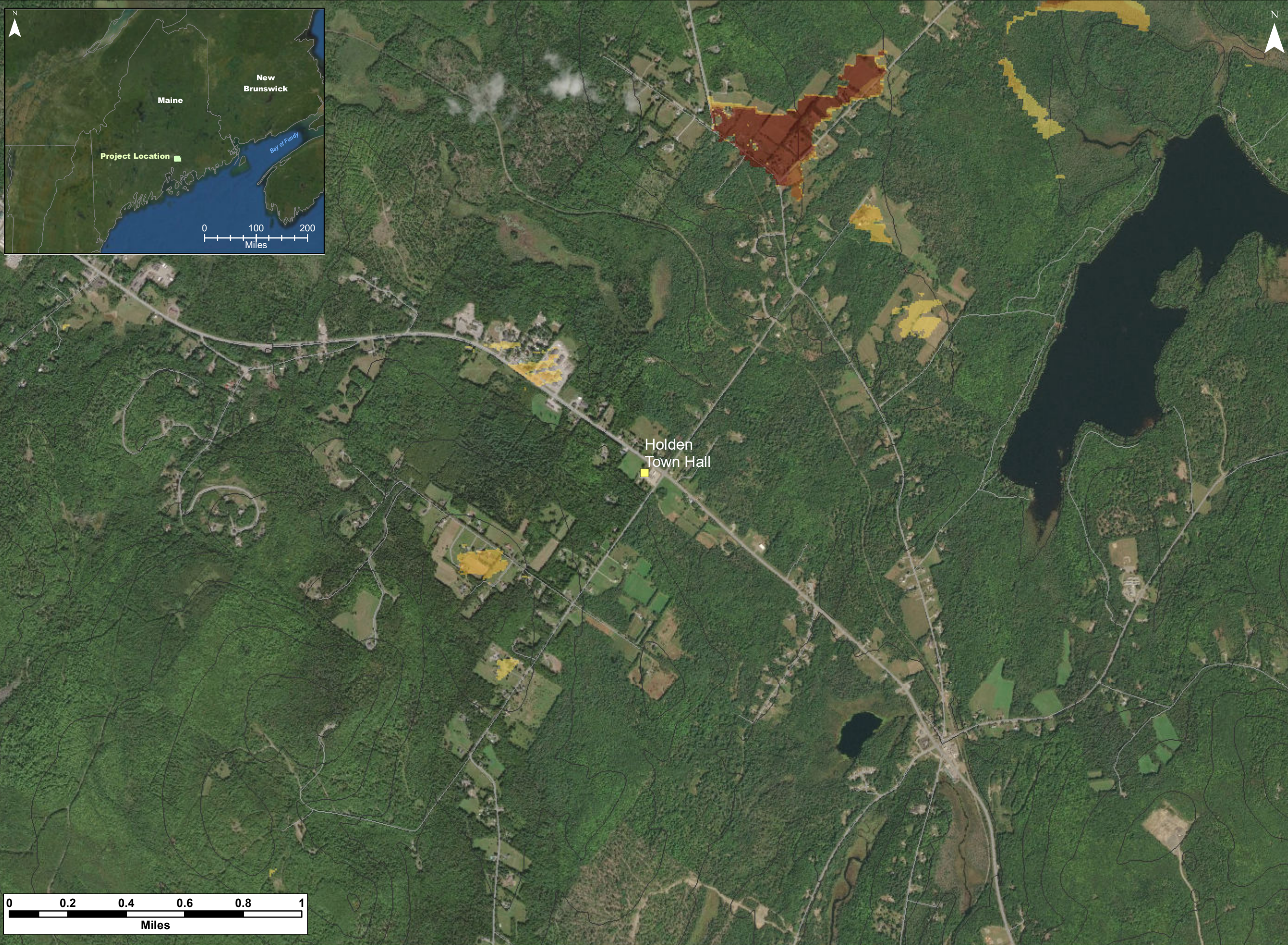
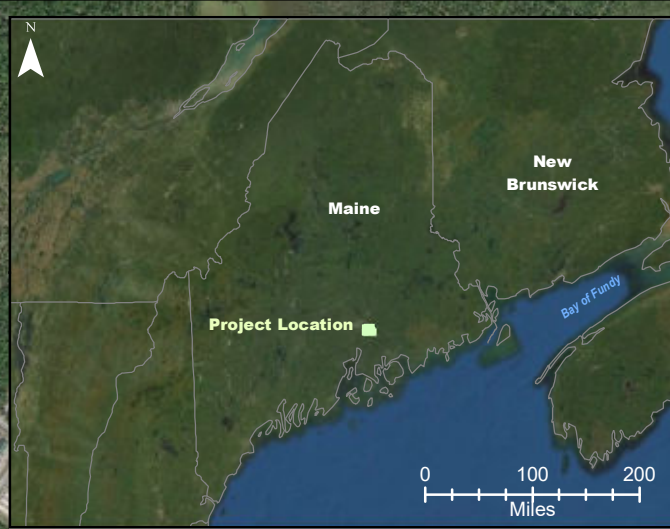
- 1
- 2
- 3
- 4
- 5

**Silver Maple Wind Project - Viewshed Holden Town Hall**  
 (12 m or 40 ft Forest / 185 m total height)



Date: May 2020	Project #: 19-6780
Scale: 1:20,000	Drawing #:  <b>J5</b>
Drawn By: M. Savelle	
Checked By: S. Dickey	





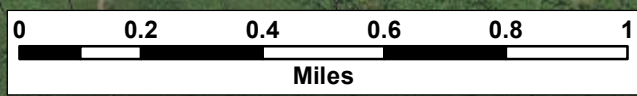
**Notes:**  
 1. Data Sources: Maine Office of GIS, Client  
 2. Basemaps: Esri, DigitalGlobe, GeoEye, Earthstar Geographics, CNES/Airbus DS, USDA, USGS, AeroGRID, IGN, and the GIS User Community  
 3. Projection: NAD83 UTM Zone 19

**Legend:**

- SRSNS
- Elevation (100 ft)
- Roads - NG911

**Number of Visible Turbines**

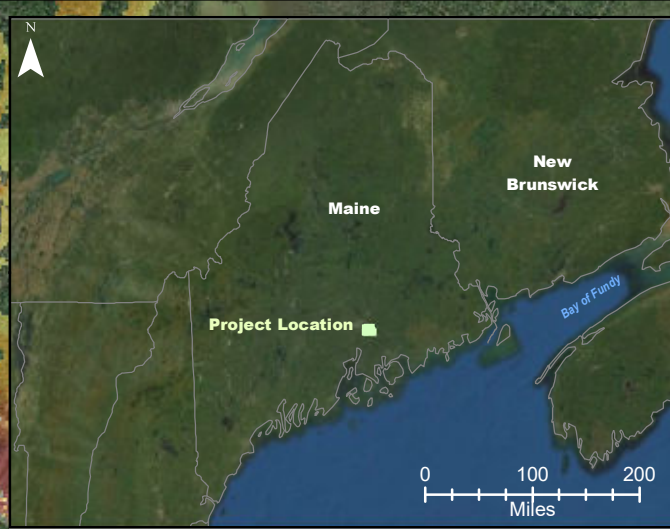
- 1
- 2
- 3
- 4
- 5



**Silver Maple Wind Project - Viewshed Holden Town Hall**  
 (12 m or 40 ft Forest / 117 m total height)



Date: May 2020	Project #: 19-6780
Scale: 1:20,000	Drawing #:  <b>J6</b>
Drawn By: M. Savelle	
Checked By: S. Dickey	



**Notes:**

1. Data Sources: Maine Office of GIS, Client
2. Basemaps: Esri, DigitalGlobe, GeoEye, Earthstar Geographics, CNES/Airbus DS, USDA, USGS, AeroGRID, IGN, and the GIS User Community
3. Projection: NAD83 UTM Zone 19

**Legend:**

- SRSNS
- Elevation (100 ft)
- Roads - NG911

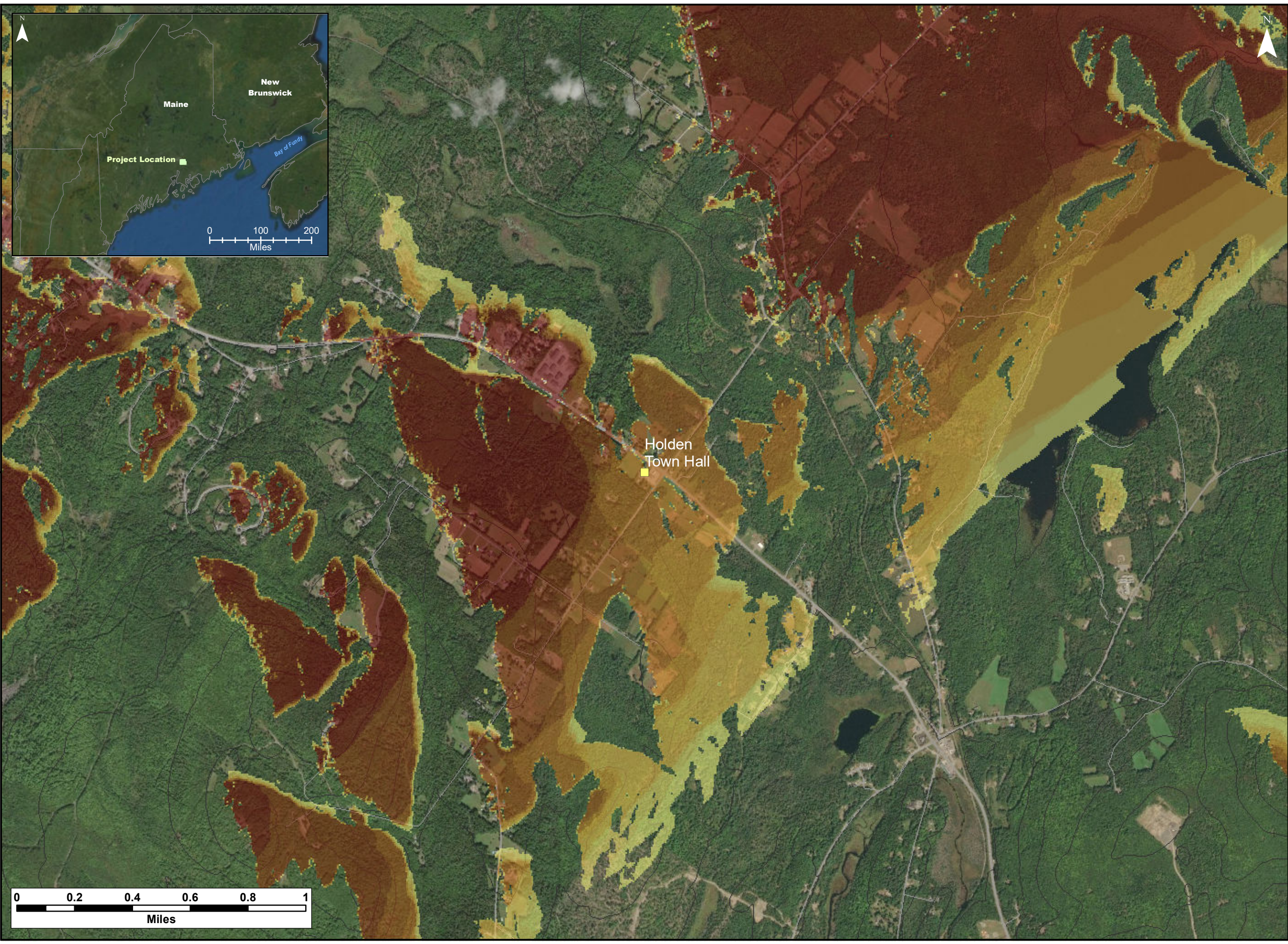
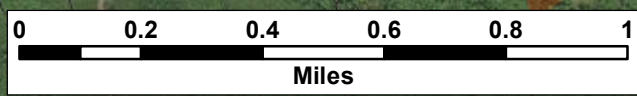
**Number of Visible Turbines**

1
2
3
4
5
6
7
8
9
10

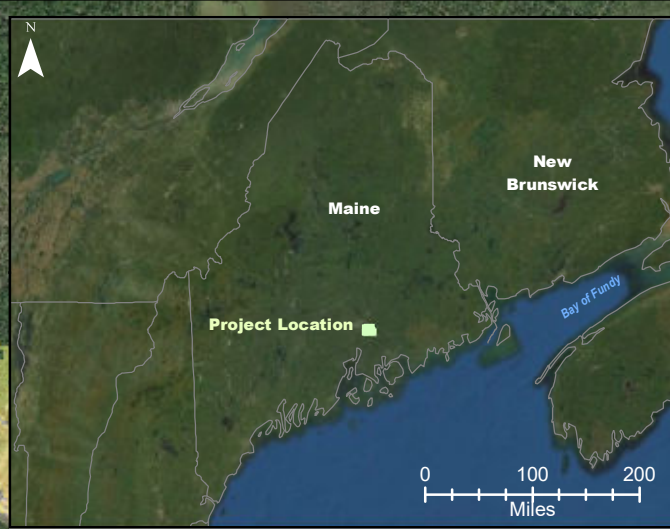
**Cumulative Impacts - Silver Maple Wind Project and Pisgah Mountain Wind Project - Viewshed Holden Town Hall (Bare Ground / 185 m & 145 m total heights)**



Date: May 2020	Project #: 19-6780
Scale: 1:20,000	Drawing #:  <b>J7</b>
Drawn By: M. Savelle	
Checked By: S. Dickey	







**Notes:**

1. Data Sources: Maine Office of GIS, Client
2. Basemaps: Esri, DigitalGlobe, GeoEye, Earthstar Geographics, CNES/Airbus DS, USDA, USGS, AeroGRID, IGN, and the GIS User Community
3. Projection: NAD83 UTM Zone 19

**Legend:**

- SRSNS
- Elevation (100 ft)
- Roads - NG911

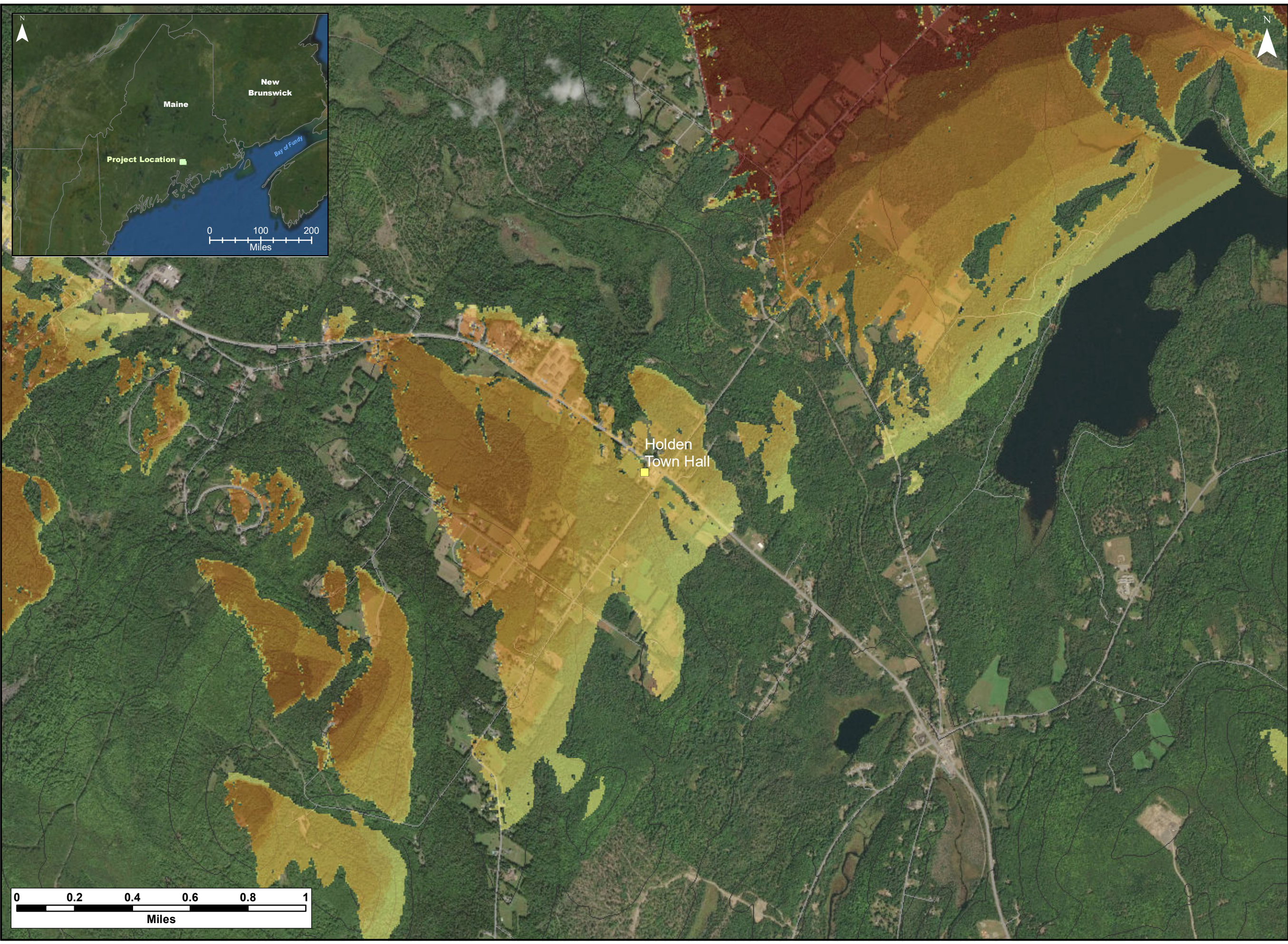
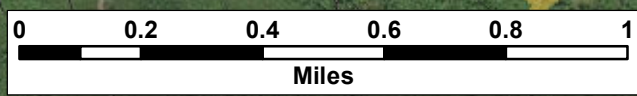
**Number of Visible Turbines**

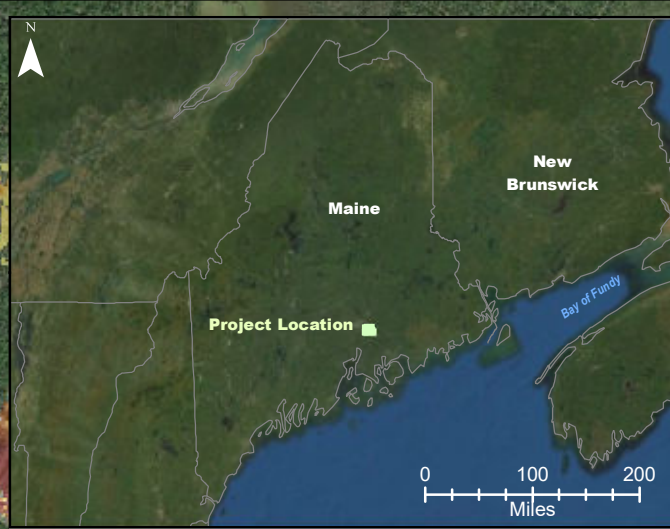
1
2
3
4
5
6
7
8
9
10

**Cumulative Impacts - Silver Maple Wind Project and Pisgah Mountain Wind Project - Viewshed Holden Town Hall (Bare Ground / 117 m & 95 m hub heights)**



Date: May 2020	Project #: 19-6780
Scale: 1:20,000	Drawing #:  <b>J8</b>
Drawn By: M. Savelle	
Checked By: S. Dickey	





**Notes:**

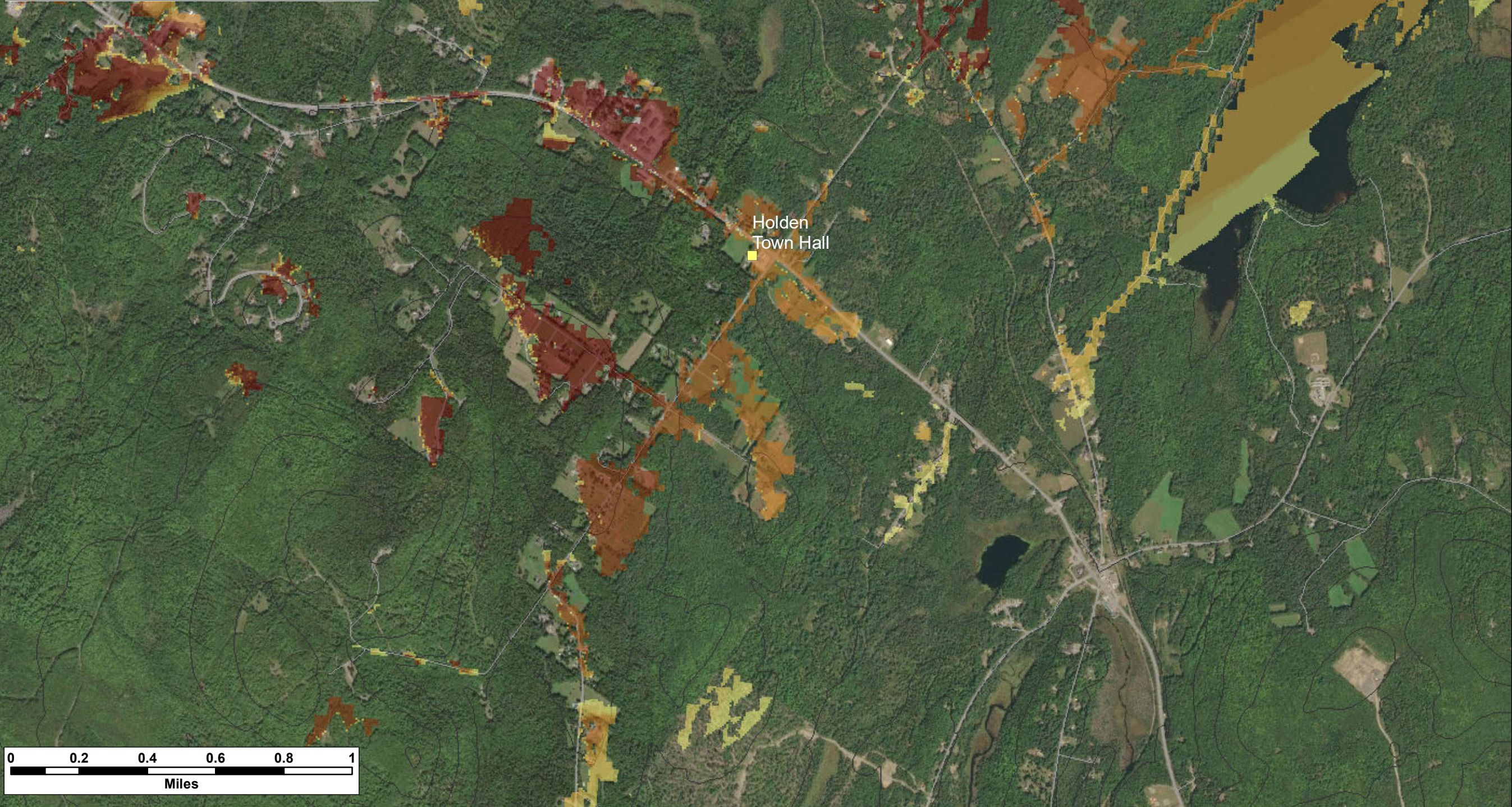
1. Data Sources: Maine Office of GIS, Client
2. Basemaps: Esri, DigitalGlobe, GeoEye, Earthstar Geographics, CNES/Airbus DS, USDA, USGS, AeroGRID, IGN, and the GIS User Community
3. Projection: NAD83 UTM Zone 19

**Legend:**

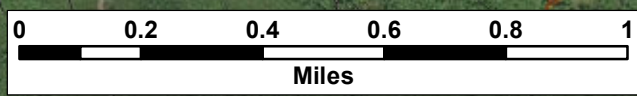
- SRSNS
- Elevation (100 ft)
- Roads - NG911

**Number of Visible Turbines**

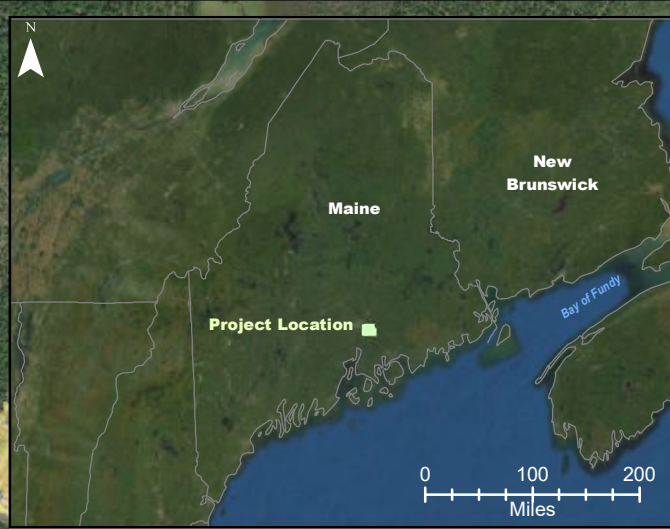
1
2
3
4
5
6
7
8
9
10



**Cumulative Impacts - Silver Maple Wind Project and Pisgah Mountain Wind Project - Viewshed Holden Town Hall (12 m or 40ft Forest) / 185 m & 145 m total heights)**



Date: May 2020	Project #: 19-6780
Scale: 1:20,000	Drawing #:  <b>J9</b>
Drawn By: M. Savelle	
Checked By: S. Dickey	



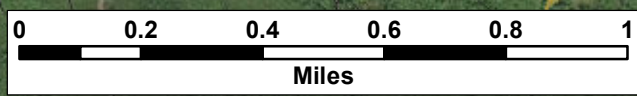
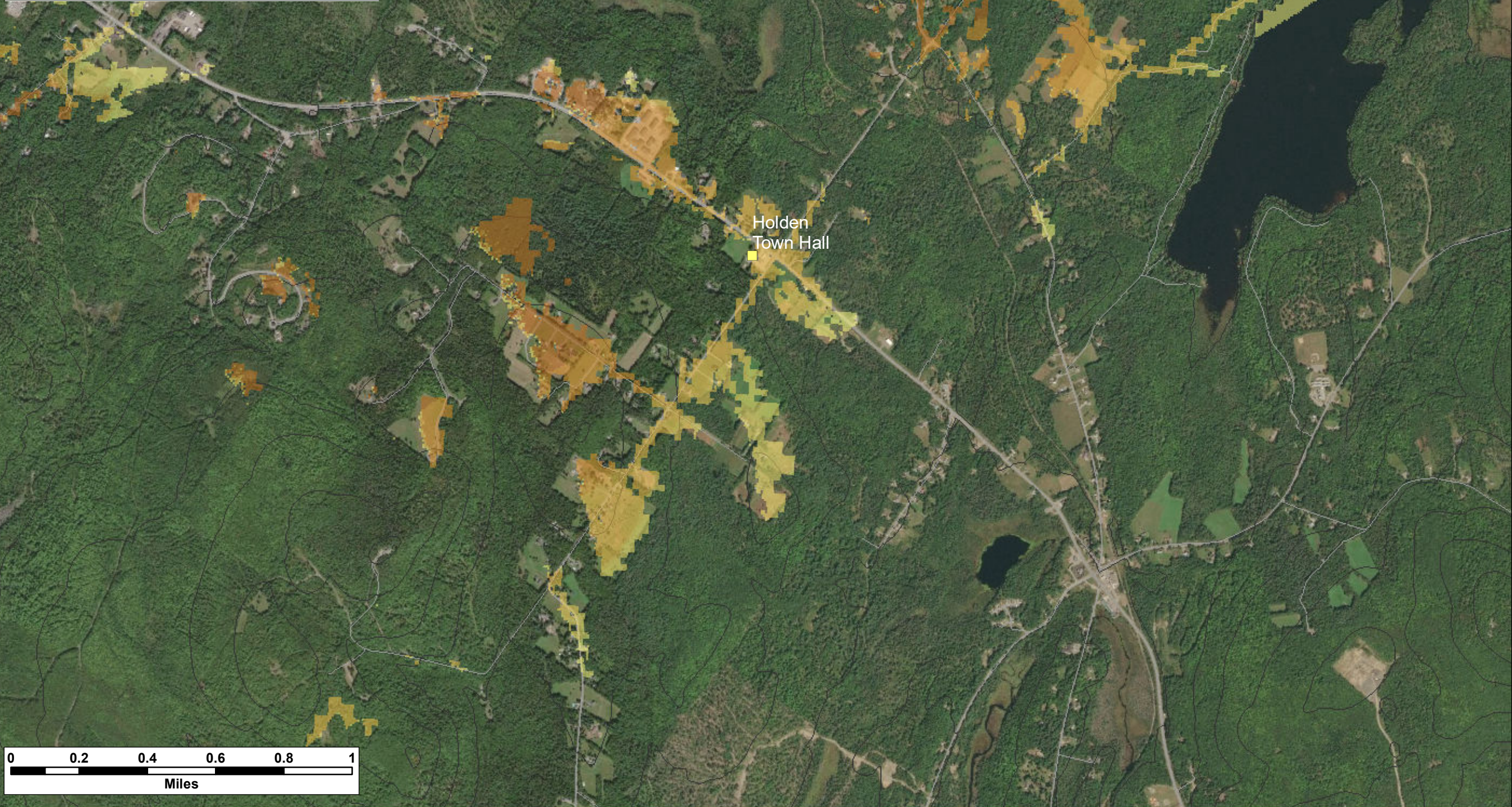
**Notes:**  
 1. Data Sources: Maine Office of GIS, Client  
 2. Basemaps: Esri, DigitalGlobe, GeoEye, Earthstar Geographics, CNES/Airbus DS, USDA, USGS, AeroGRID, IGN, and the GIS User Community  
 3. Projection: NAD83 UTM Zone 19

**Legend:**

- SRSNS
- Elevation (100 ft)
- Roads - NG911

**Number of Visible Turbines**

- 1
- 2
- 3
- 4
- 5
- 6
- 7
- 8
- 9
- 10



**Cumulative Impacts -  
 Silver Maple Wind  
 Project and Pisgah  
 Mountain Wind Project -  
 Viewshed Holden Town Hall  
 (12 m or 40ft Forest) /  
 117 m & 95 m hub heights)**



Date: May 2020	Project #: 19-6780
Scale: 1:20,000	Drawing #:  <b>J10</b>
Drawn By: M. Savelle	
Checked By: S. Dickey	



J11a



J11b



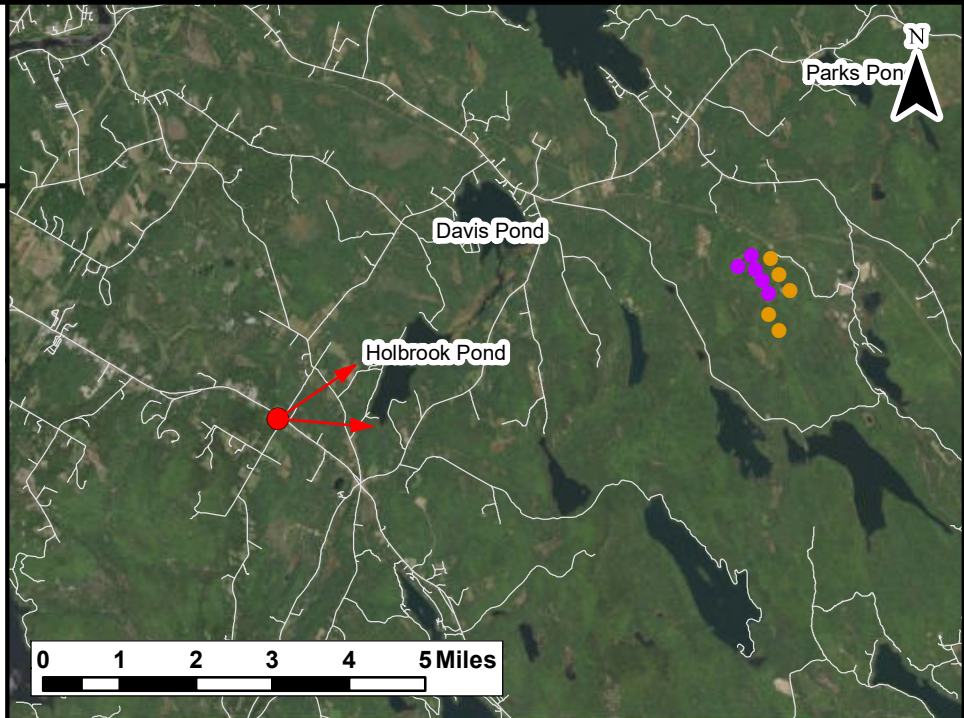
J12



Holden Town Hall

**Notes:**  
 1. Data Sources: Maine Office of GIS, Client  
 2. Basemaps: Esri, DigitalGlobe, GeoEye, Earthstar Geographics, CNES/Airbus DS, USDA, USGS, AeroGRID, IGN, and the GIS User Community  
 3. Projection: NAD83 UTM Zone 19

**Legend:**  
 ● Pisgah Mountain Turbine (Existing)  
 ● Silver Maple Wind Turbine (Proposed)  
 — Roads - NG911  
 ↔ Photosimulation Field of View



TECHNICAL INFORMATION	
Name of SRSNS:	Holden Town Hall
View Coordinates:	Latitude: 44° 44' 59" Longitude: -68° 39' 02" Easting: 527671 m Northing: 4955190 m
Direction of View:	East to Northeast, Heading 82°
Camera Make/ Model:	Canon EOS 5D Mark IV
Focal Length:	31.25 mm
Effective Focal Length:	50 mm
Image Resolution:	6720 x 2500
Weather Conditions:	Sunny, Clear Sky
Date of Photo:	2020/04/30
Time of Photo:	14:15
Photo Credit:	CES Inc., Brewer, Maine

**Silver Maple Wind Project Expansion - Photosimulation for Holden Town Hall**

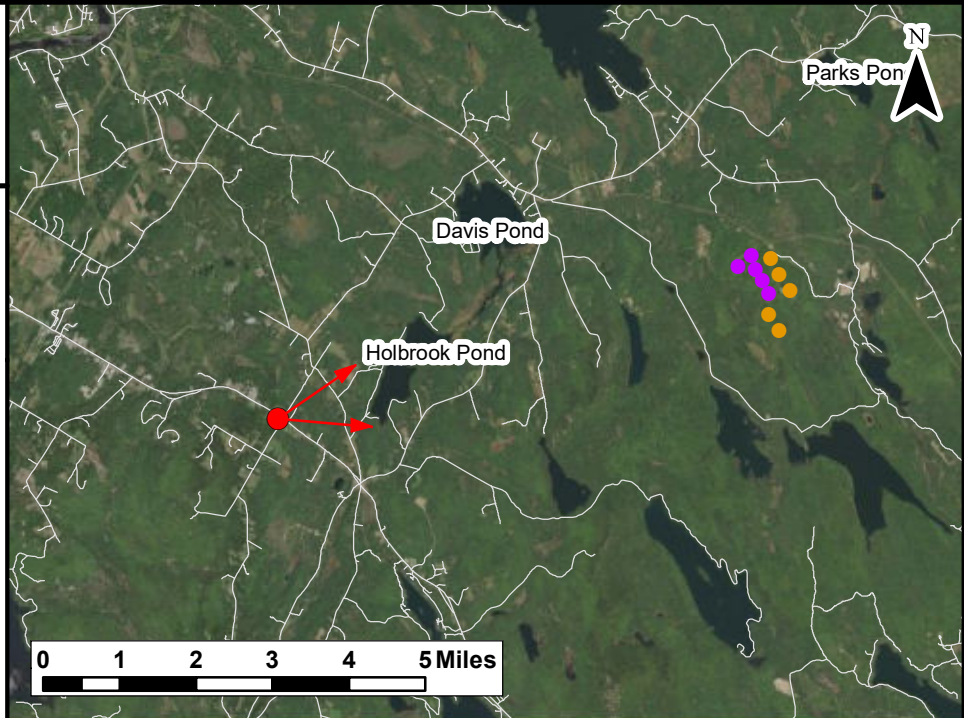
Date:	Project #:
May 2020	19-6780
Scale:	Drawing #:
1:159,135	<b>J13a</b>
Drawn By:	Checked By:
M. Savelle	S. Dickey



Holden Town Hall

**Notes:**  
 1. Data Sources: Maine Office of GIS, Client  
 2. Basemaps: Esri, DigitalGlobe, GeoEye, Earthstar Geographics, CNES/Airbus DS, USDA, USGS, AeroGRID, IGN, and the GIS User Community  
 3. Projection: NAD83 UTM Zone 19

**Legend:**  
 ● Pisgah Mountain Turbine (Existing)  
 ● Silver Maple Wind Turbine (Proposed)  
 — Roads - NG911  
 ↔ Photosimulation Field of View



**TECHNICAL INFORMATION**

Name of SRSNS:	Holden Town Hall
View Coordinates:	Latitude: 44° 44' 59" Longitude: -68° 39' 02" Easting: 527671 m Northing: 4955190 m
Direction of View:	East to Northeast, Heading 82°
Camera Make/ Model:	Canon EOS 5D Mark IV
Focal Length:	31.25 mm
Effective Focal Length:	50 mm
Image Resolution:	6720 x 2500
Weather Conditions:	Sunny, Clear Sky
Date of Photo:	2020/04/30
Time of Photo:	14:15
Photo Credit:	CES Inc., Brewer, Maine

**Silver Maple Wind Project Expansion - Photosimulation for Holden Town Hall**



Date:	Project #:
May 2020	19-6780
Scale:	Drawing #:
1:159,135	<b>J13b</b>
Drawn By:	Checked By:
M. Savelle	S. Dickey





J14