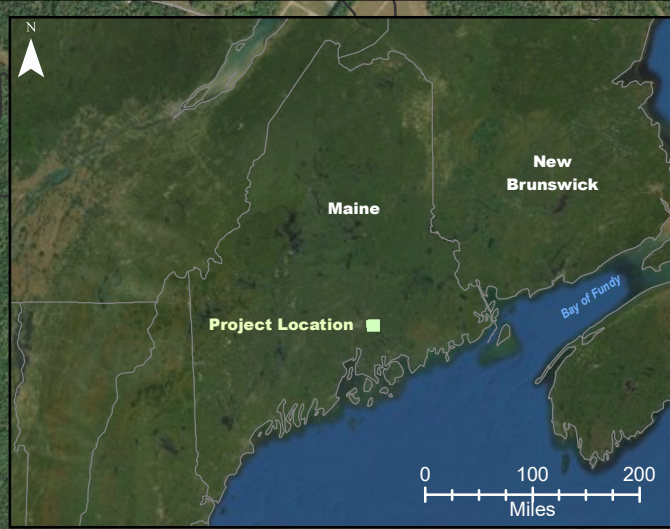


APPENDIX I
EAST EDDINGTON PUBLIC HALL

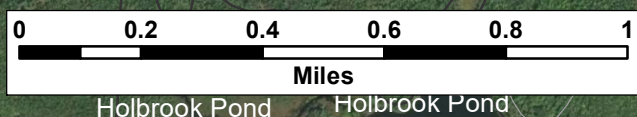


Notes:

1. Data Sources: Maine Office of GIS, Client
2. Basemaps: Esri, DigitalGlobe, GeoEye, Earthstar Geographics, CNES/Airbus DS, USDA, USGS, AeroGRID, IGN, and the GIS User Community
3. Projection: NAD83 UTM Zone 19

Legend:

- Elevation (100 ft)
- Roads - NG911



**Silver Maple Wind
Project - East Eddington
Public Hall
Existing Character
of Surrounding Area**



Date: April 2020	Project #: 19-6780
Scale: 1:20,000	Drawing #: 11
Drawn By: M. Savelle	
Checked By: S. Dickey	

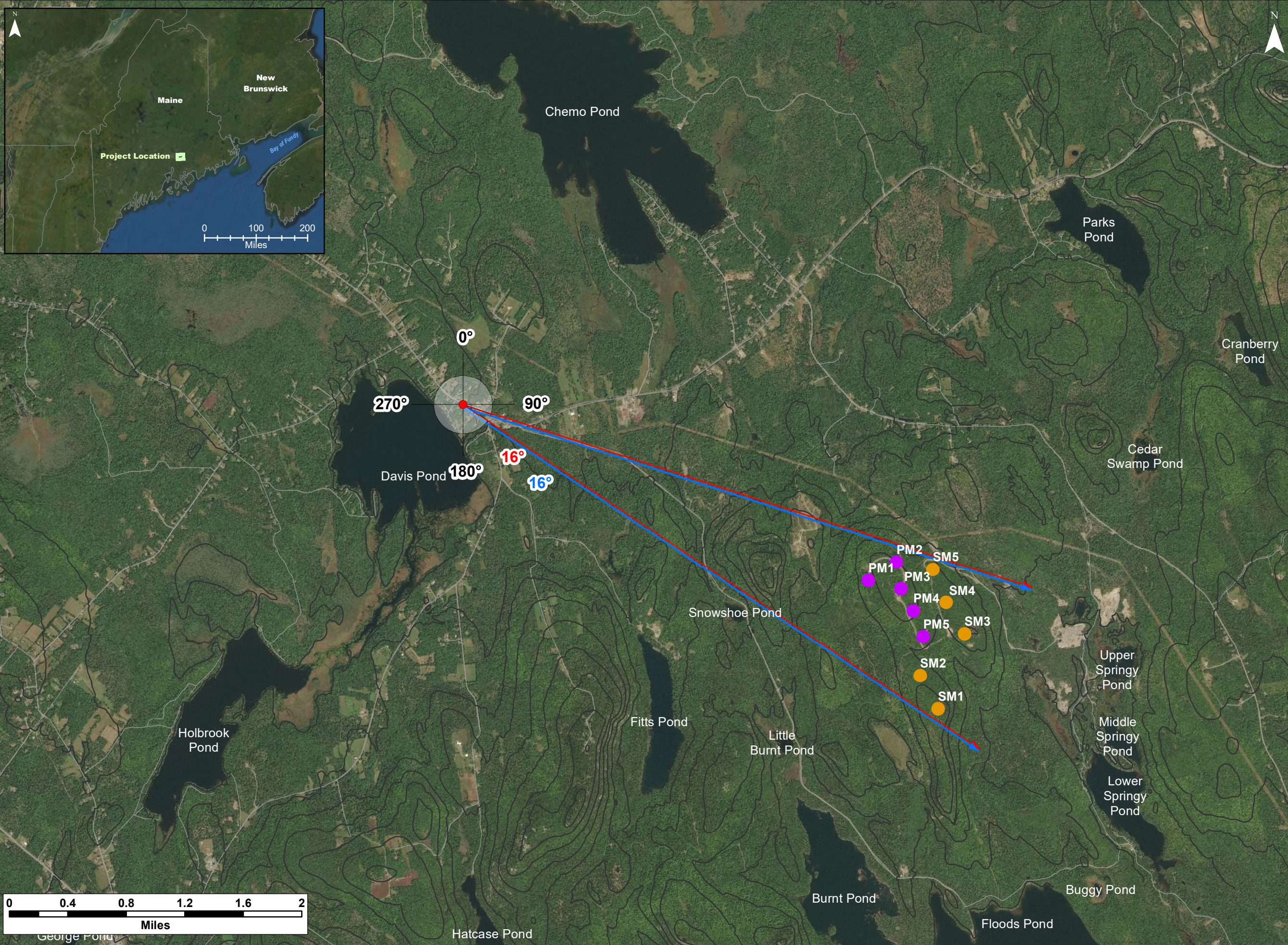


Notes:

1. Data Sources: Maine Office of GIS, Client
2. Basemaps: Esri, DigitalGlobe, GeoEye, Earthstar Geographics, CNES/Airbus DS, USDA, USGS, AeroGRID, IGN, and the GIS User Community
3. Projection: NAD83 UTM Zone 19

Legend:

- Pisgah Mountain Turbine (Existing)
- Silver Maple Wind Turbine (Proposed)
- Elevation (100 ft)
- Roads - NG911
- High Visual Impact Investigation Area
- ↔ Horizontal View Angle - Silver Maple and Pisgah Mountain Turbines
- ↔ Horizontal View Angle - Silver Maple Turbines



Silver Maple Wind Project -East Eddington Extent of View



Date: April 2020	Project #: 19-6780
Scale: 1:40,000	Drawing #: 12
Drawn By: M. Savelle	
Checked By: S. Dickey	

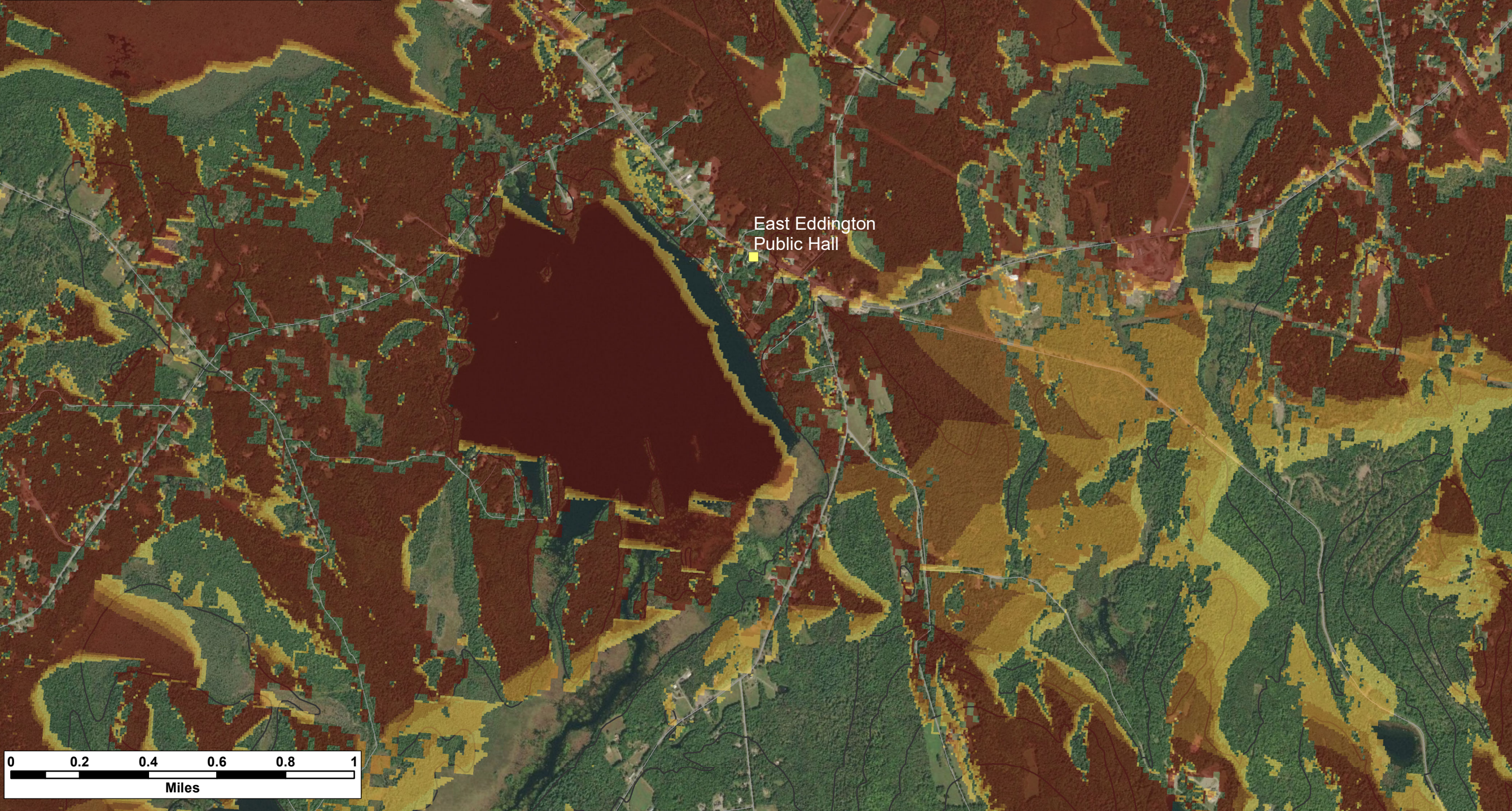


Notes:
 1. Data Sources: Maine Office of GIS, Client
 2. Basemaps: Esri, DigitalGlobe, GeoEye, Earthstar Geographics, CNES/Airbus DS, USDA, USGS, AeroGRID, IGN, and the GIS User Community
 3. Projection: NAD83 UTM Zone 19

Legend:
 Scenic Resource of State and National Significance
 SRSNS
 Elevation (100 ft)
 Roads - NG911

Number of Visible Turbines

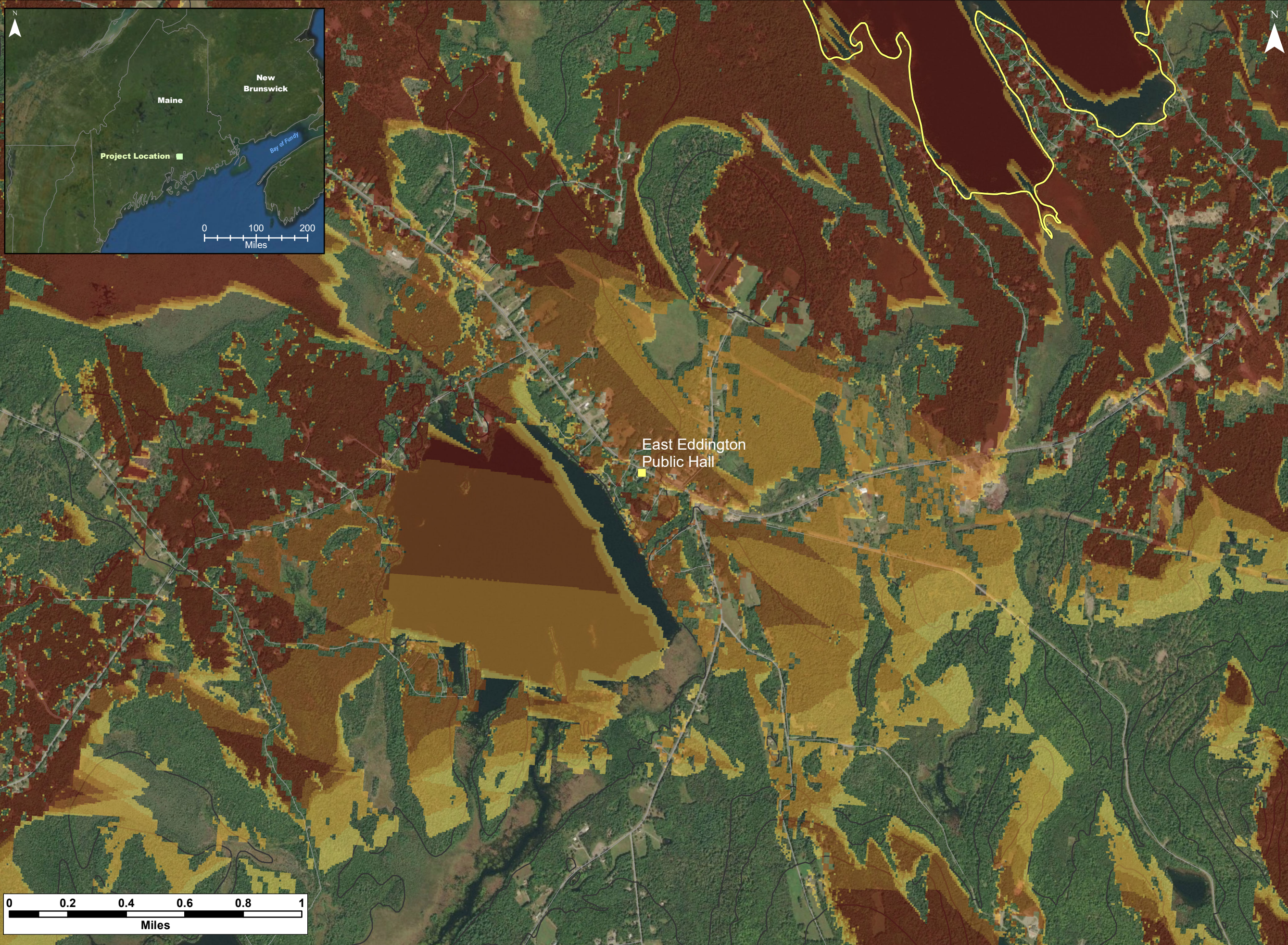
1
2
3
4
5



Silver Maple Wind Project - Viewshed
East Eddington Public Hall
 (Bare Ground / 185 m total height)



Date: April 2020	Project #: 19-6780
Scale: 1:20,000	Drawing #: 13
Drawn By: M. Savelle	
Checked By: S. Dickey	



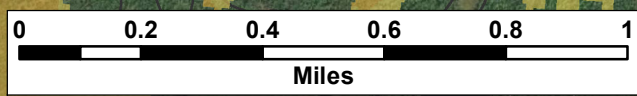
Notes:
 1. Data Sources: Maine Office of GIS, Client
 2. Basemaps: Esri, DigitalGlobe, GeoEye, Earthstar Geographics, CNES/Airbus DS, USDA, USGS, AeroGRID, IGN, and the GIS User Community
 3. Projection: NAD83 UTM Zone 19

Legend:
 ■ SRSNS *Scenic Resource of State and National Significance*
 — Elevation (100 ft)
 — Roads - NG911

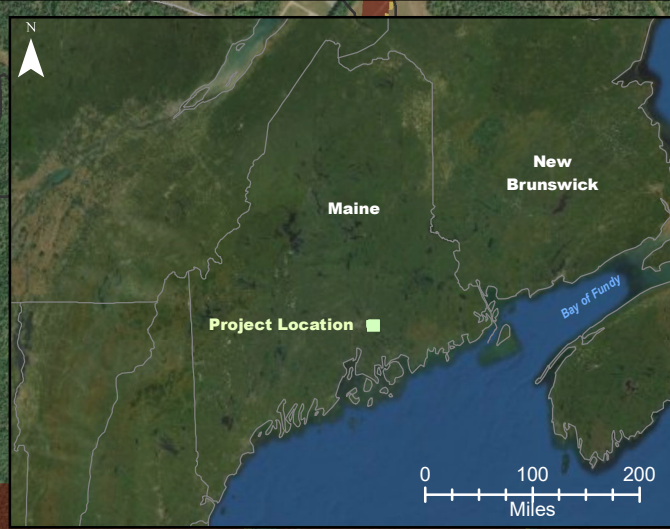
Number of Visible Turbines

■ 1
■ 2
■ 3
■ 4
■ 5

**Silver Maple Wind Project - Viewshed
 East Eddington Public Hall
 (Bare Ground /
 117 m hub height)**



Date: April 2020	Project #: 19-6780
Scale: 1:20,000	Drawing #: 14
Drawn By: M. Savelle	
Checked By: S. Dickey	



Notes:
 1. Data Sources: Maine Office of GIS, Client
 2. Basemaps: Esri, DigitalGlobe, GeoEye, Earthstar Geographics, CNES/Airbus DS, USDA, USGS, AeroGRID, IGN, and the GIS User Community
 3. Projection: NAD83 UTM Zone 19

Legend:

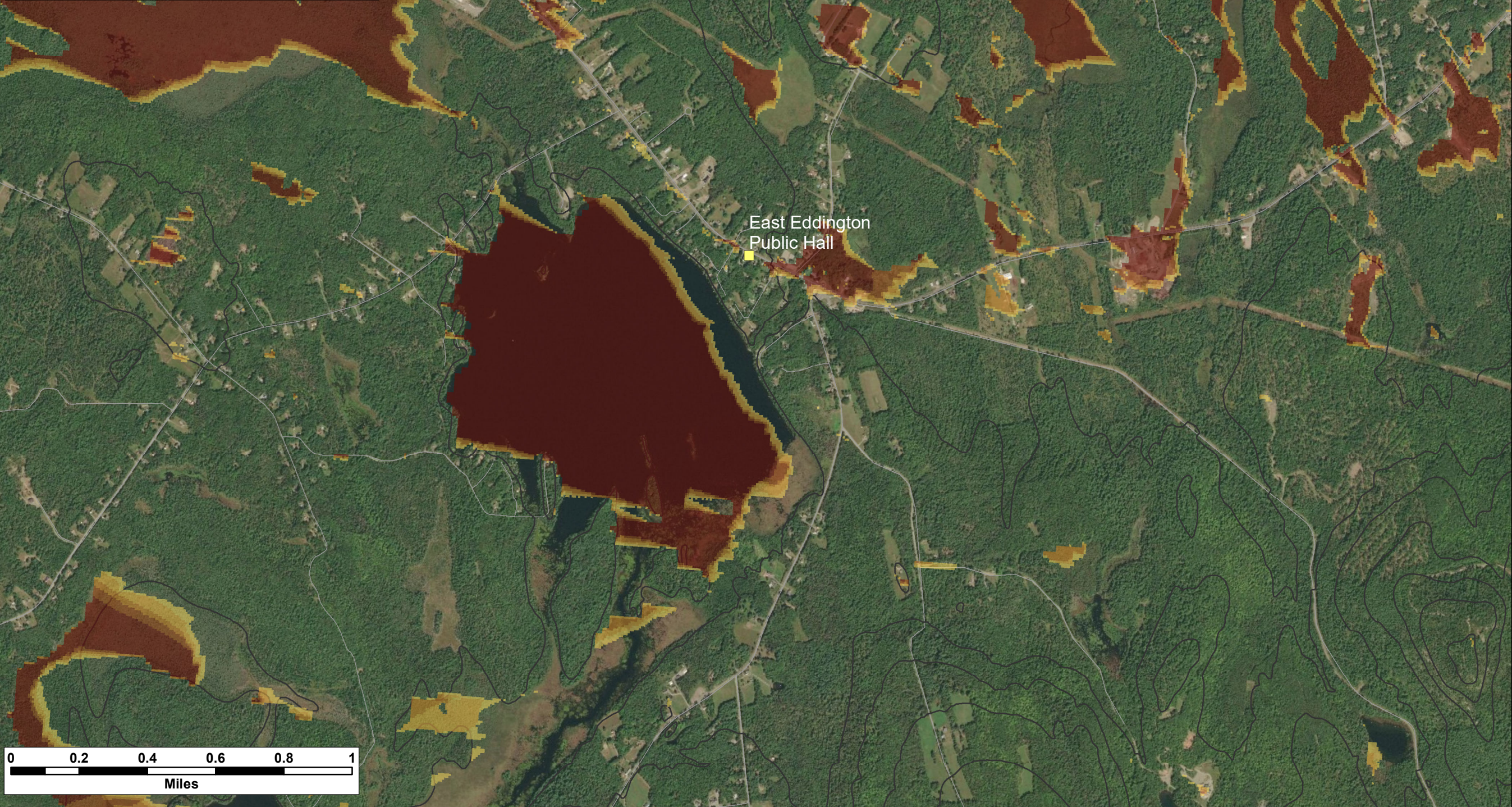
Scenic Resource of State and National Significance

SRSNS

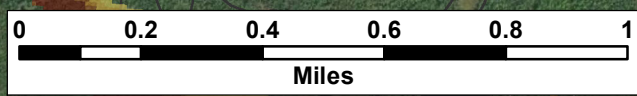
Elevation (100 ft)

Roads - NG911

1
2
3
4
5



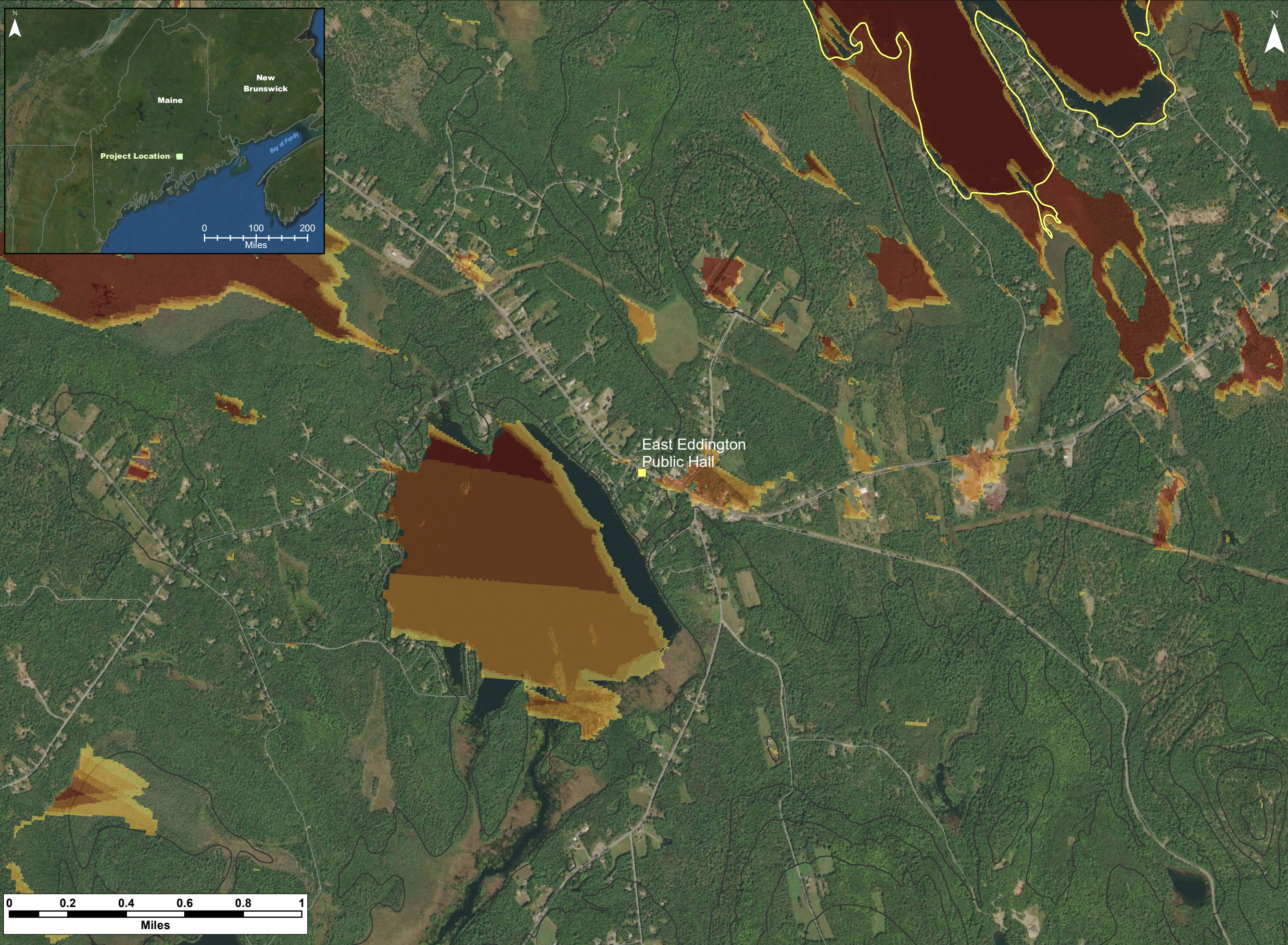
East Eddington
Public Hall



Silver Maple Wind Project - Viewshed
East Eddington Public Hall
 (12 m or 40 ft Forest / 185 m total height)



Date: April 2020	Project #: 19-6780
Scale: 1:20,000	Drawing #: 15
Drawn By: M. Savelle	
Checked By: S. Dickey	



Notes:
 1. Data Sources: Maine Office of GIS, Client
 2. Basemaps: Esri, DigitalGlobe, GeoEye, Earthstar Geographics, CNES/Airbus DS, USDA, USGS, AeroGRID, IGN, and the GIS User Community
 3. Projection: NAD83 UTM Zone 19

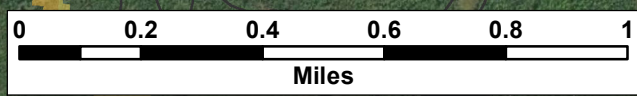
Legend:
 Scenic Resource of State and National Significance
 SRSNS
 Elevation (100 ft)
 Roads - NG911

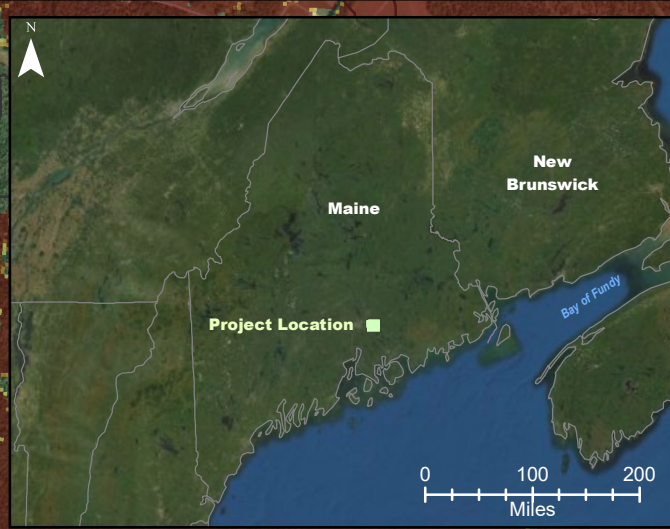
Number of Visible Turbines
 1
 2
 3
 4
 5

Silver Maple Wind Project - Viewshed
East Eddington Public Hall
 (12 m or 40 ft Forest / 117 m hub height)



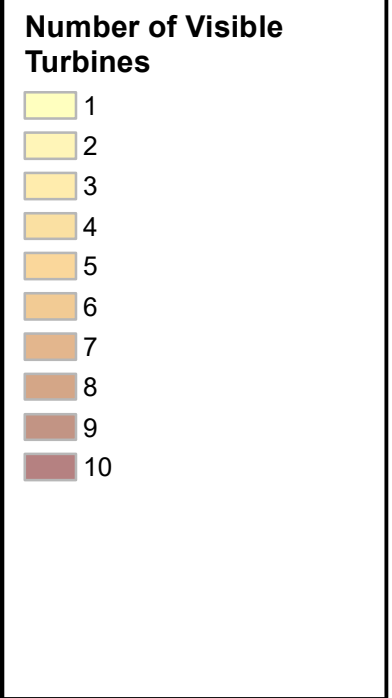
Date: April 2020	Project #: 19-6780
Scale: 1:20,000	Drawing #: 16
Drawn By: M. Savelle	
Checked By: S. Dickey	





Notes:
 1. Data Sources: Maine Office of GIS, Client
 2. Basemaps: Esri, DigitalGlobe, GeoEye, Earthstar Geographics, CNES/Airbus DS, USDA, USGS, AeroGRID, IGN, and the GIS User Community
 3. Projection: NAD83 UTM Zone 19

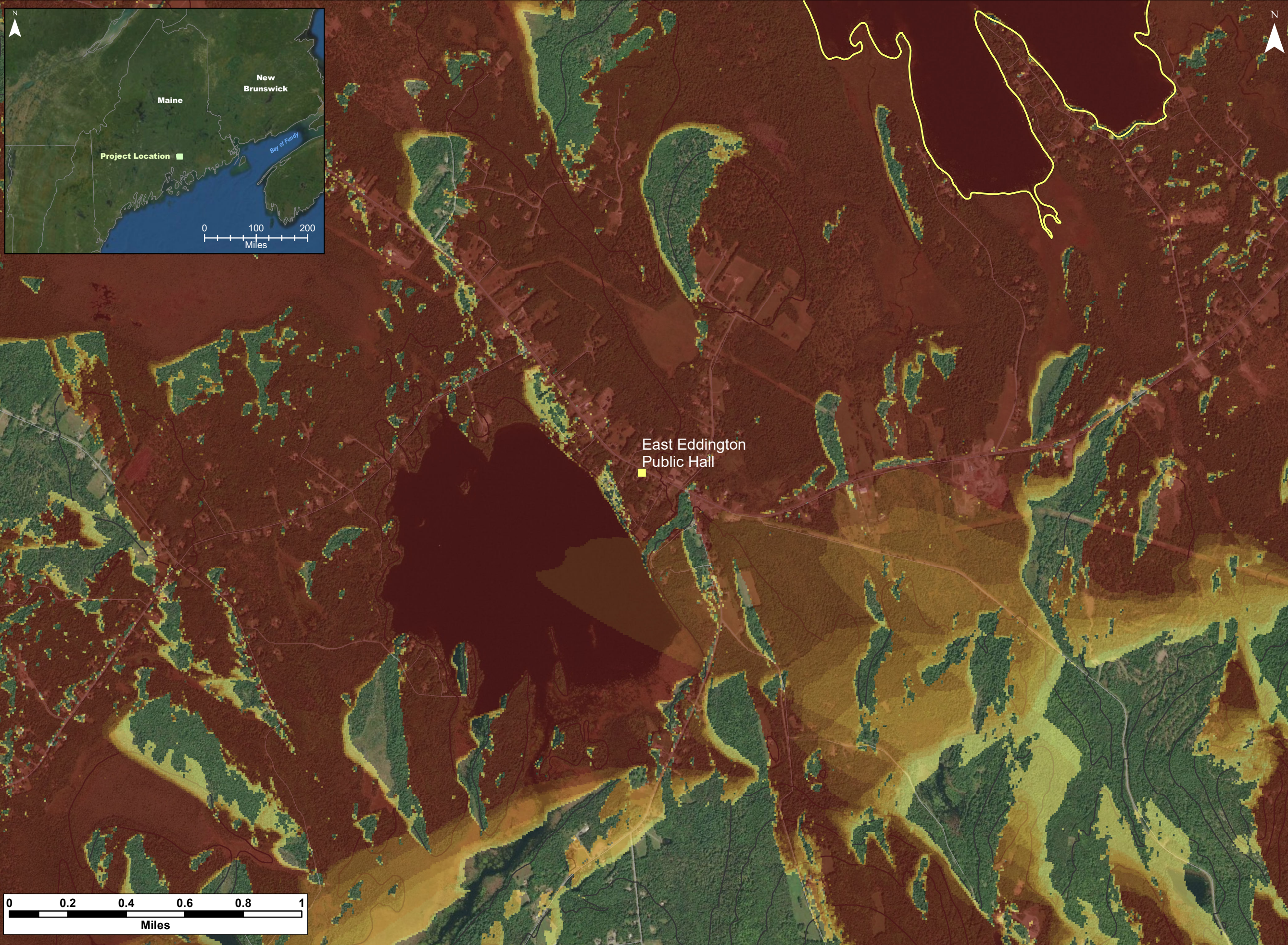
Legend:
 ■ SRSNS Scenic Resource of State and National Significance
 — Elevation (100 ft)
 — Roads - NG911



Cumulative Impacts - Silver Maple Wind Project and Pisgah Mountain Wind Project - Viewshed East Eddington Public Hall (Bare Ground / 185 m & 145 m total heights)



Date: April 2020	Project #: 19-6780
Scale: 1:20,000	Drawing #: 17
Drawn By: M. Savelle	
Checked By: S. Dickey	





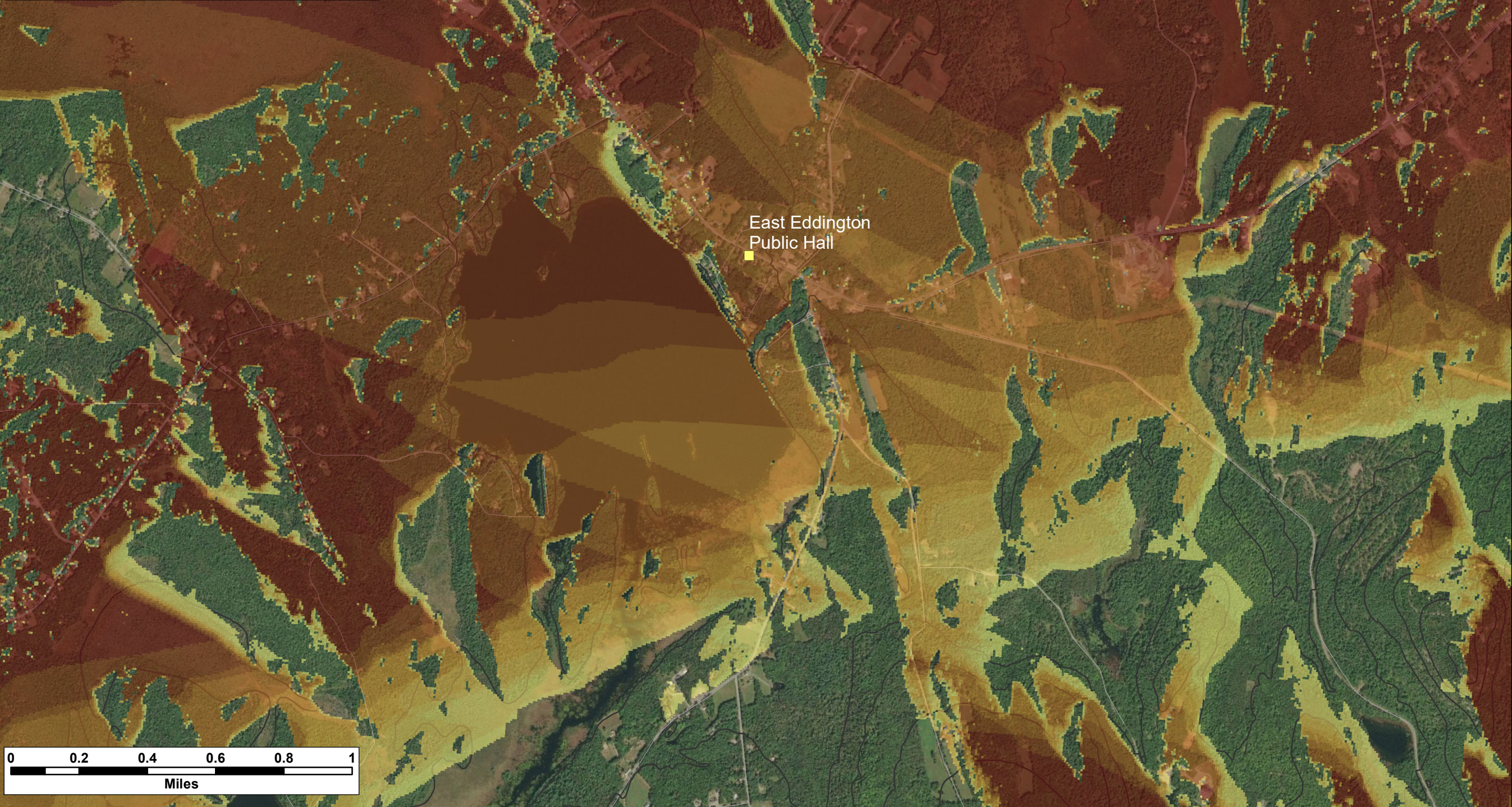
Notes:
 1. Data Sources: Maine Office of GIS, Client
 2. Basemaps: Esri, DigitalGlobe, GeoEye, Earthstar Geographics, CNES/Airbus DS, USDA, USGS, AeroGRID, IGN, and the GIS User Community
 3. Projection: NAD83 UTM Zone 19

Legend:

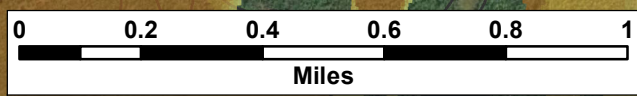
- SRSNS *Scenic Resource of State and National Significance*
- Elevation (100 ft)
- Roads - NG911

Number of Visible Turbines

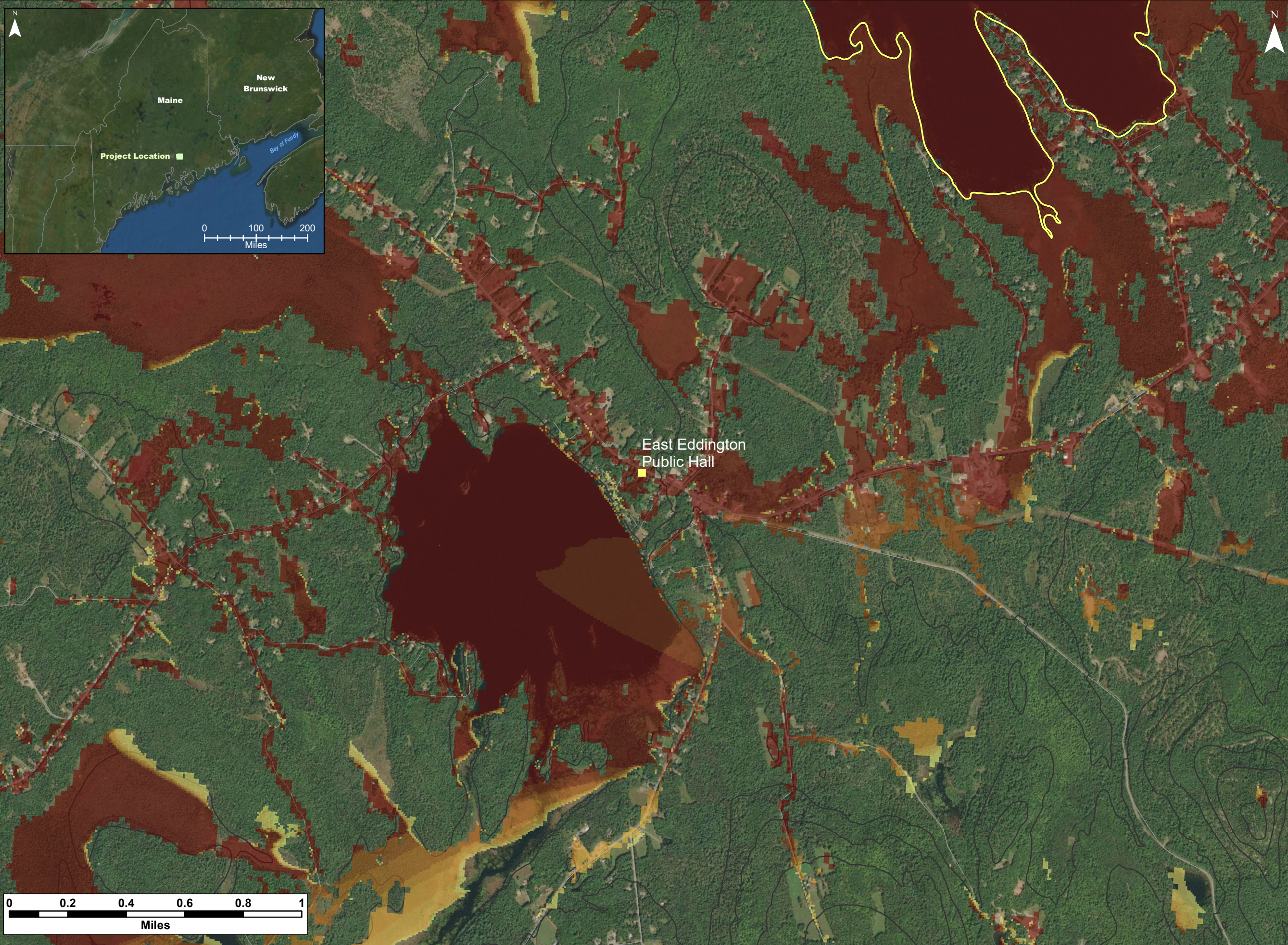
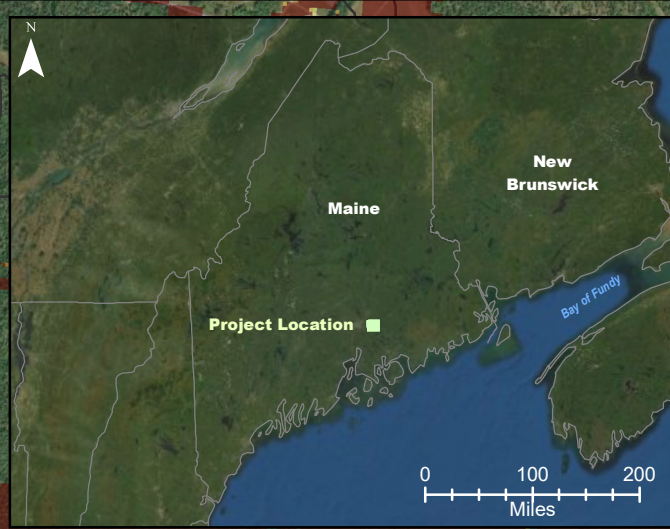
1
2
3
4
5
6
7
8
9
10



Cumulative Impacts - Silver Maple Wind Project and Pisgah Mountain Wind Project - Viewshed East Eddington Public Hall (Bare Ground / 117 m & 95 m hub heights)



Date: April 2020	Project #: 19-6780
Scale: 1:20,000	Drawing #: 18
Drawn By: M. Savelle	
Checked By: S. Dickey	



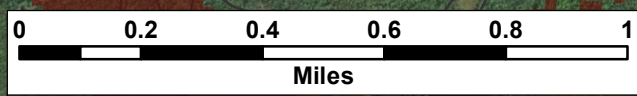
Notes:
 1. Data Sources: Maine Office of GIS, Client
 2. Basemaps: Esri, DigitalGlobe, GeoEye, Earthstar Geographics, CNES/Airbus DS, USDA, USGS, AeroGRID, IGN, and the GIS User Community
 3. Projection: NAD83 UTM Zone 19

Legend:
 ■ SRSNS Scenic Resource of State and National Significance
 — Elevation (100 ft)
 — Roads - NG911

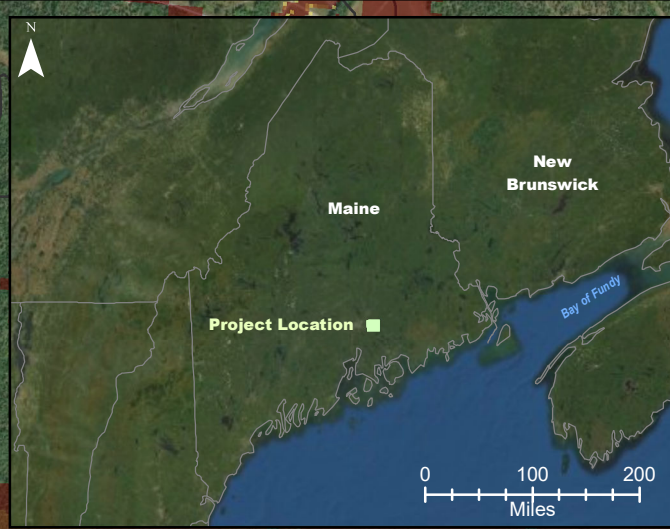
Number of Visible Turbines

1
2
3
4
5
6
7
8
9
10

Cumulative Impacts - Silver Maple Wind Project and Pisgah Mountain Wind Project - Viewshed East Eddington Public Hall (12 m or 40ft Forest) / 185 m & 145 m total heights)



Date: April 2020	Project #: 19-6780
Scale: 1:20,000	Drawing #: 19
Drawn By: M. Savelle	
Checked By: S. Dickey	



Notes:
 1. Data Sources: Maine Office of GIS, Client
 2. Basemaps: Esri, DigitalGlobe, GeoEye, Earthstar Geographics, CNES/Airbus DS, USDA, USGS, AeroGRID, IGN, and the GIS User Community
 3. Projection: NAD83 UTM Zone 19

Legend:
 ■ SRSNS Scenic Resource of State and National Significance
 — Elevation (100 ft)
 — Roads - NG911

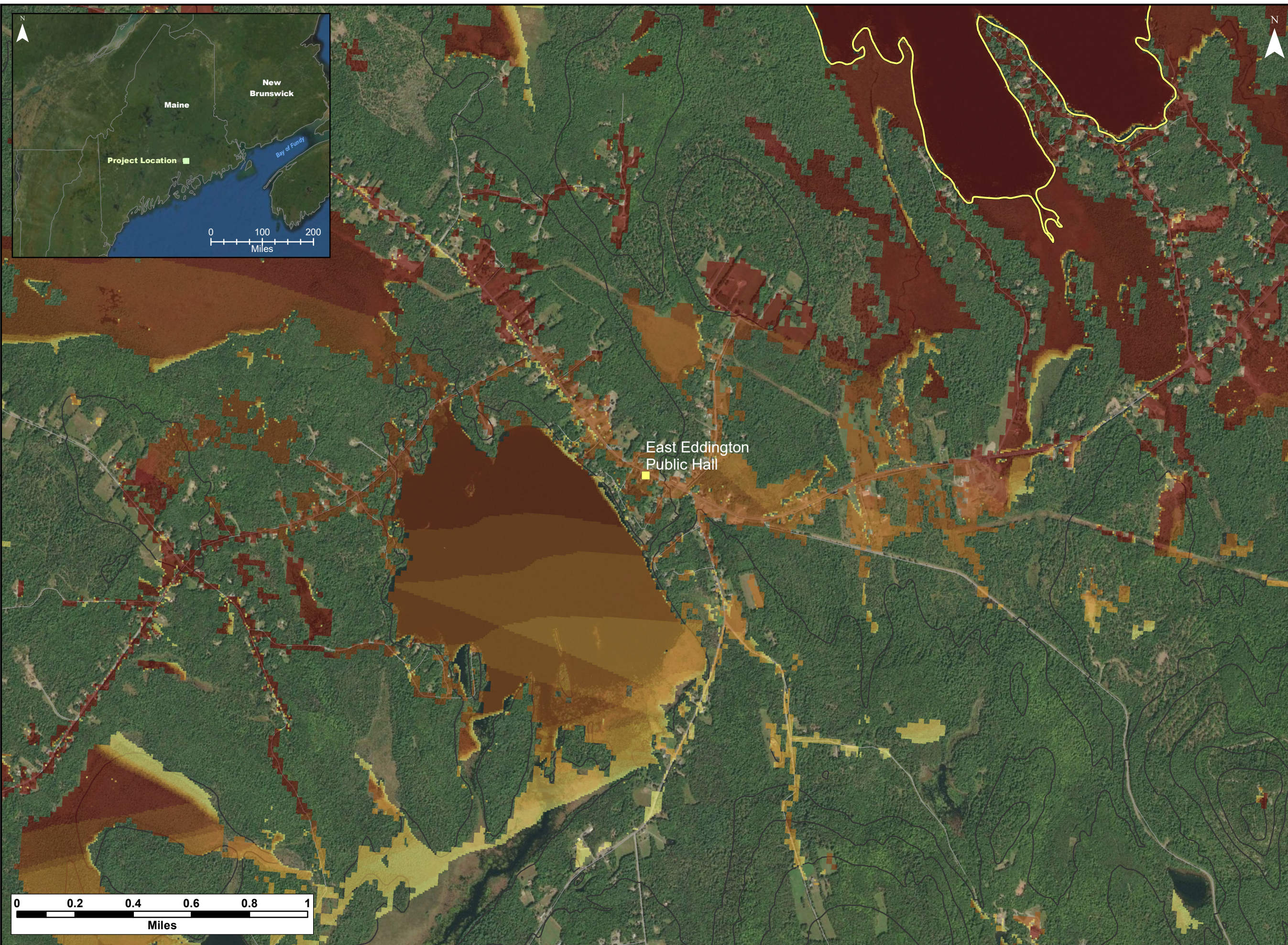
Number of Visible Turbines

1
2
3
4
5
6
7
8
9
10

Cumulative Impacts - Silver Maple Wind Project and Pisgah Mountain Wind Project - Viewshed East Eddington Public Hall (12 m or 40 ft Forest) / 117 m & 95 m hub heights)



Date: April 2020	Project #: 19-6780
Scale: 1:20,000	Drawing #: 110
Drawn By: M. Savelle	
Checked By: S. Dickey	





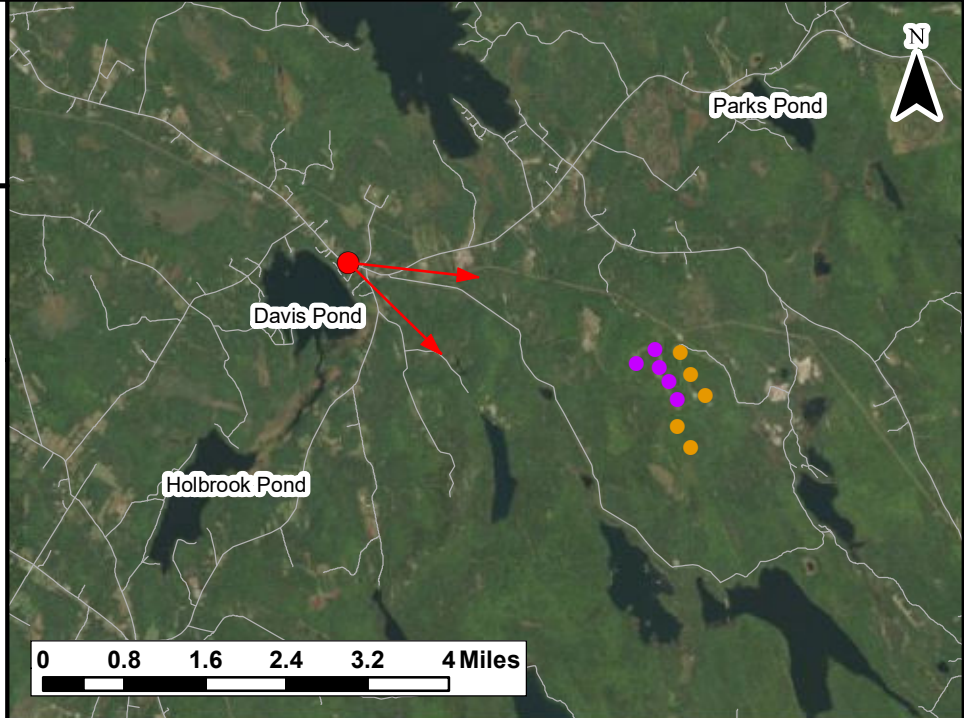




East Eddington

Notes:
 1. Data Sources: Maine Office of GIS, Client
 2. Basemaps: Esri, DigitalGlobe, GeoEye, Earthstar Geographics, CNES/Airbus DS, USDA, USGS, AeroGRID, IGN, and the GIS User Community
 3. Projection: NAD83 UTM Zone 19

Legend:
 ● Pisgah Mountain Turbine (Existing)
 ● Silver Maple Wind Turbine (Proposed)
 — Roads - NG911
 ↗ ↘ Photosimulation Field of View



TECHNICAL INFORMATION

Name of SRSNS:	East Eddington
View Coordinates:	Latitude: 44° 47' 33" Longitude: -68° 35' 8" Easting: 532782 m Northing: 4959984 m
Direction of View:	South to Southeast, Heading 116°
Camera Make/ Model:	Canon EOS 800D
Focal Length:	28 mm
Effective Focal Length:	50 mm
Image Resolution:	6000 x 2500
Weather Conditions:	Sunny, Clear Sky
Date of Photo:	2020/03/11
Time of Photo:	12:31
Photo Credit:	CES Inc., Brewer, Maine

Silver Maple Wind Project Expansion - Photosimulation for East Eddington



Date:	Project #:
March 2020	19-6780
Scale:	Drawing #:
1:120,000	113
Drawn By:	Checked By:
M. Savelle	S. Dickey

