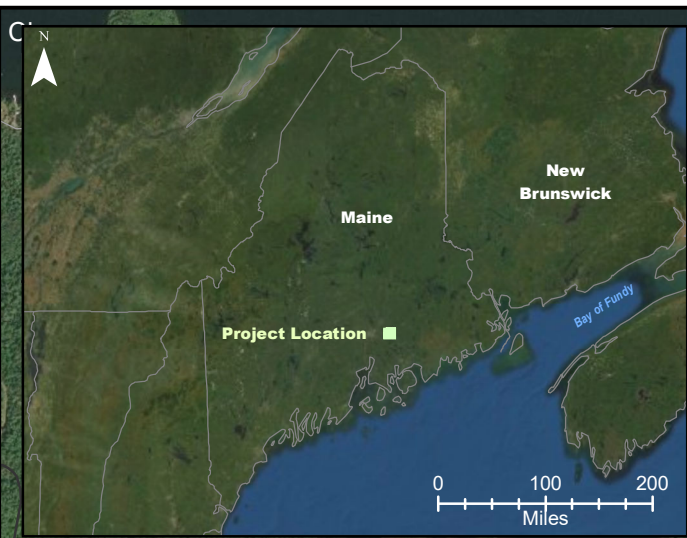


APPENDIX H  
CLIFFWOOD HALL /  
HAROLD ALLAN SCHOOLHOUSE

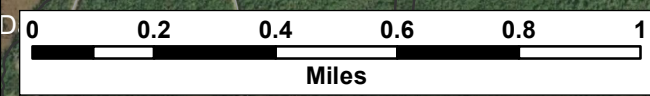
---





**Notes:**  
 1. Data Sources: Maine Office of GIS, Client  
 2. Basemaps: Esri, DigitalGlobe, GeoEye, Earthstar Geographics, CNES/Airbus DS, USDA, USGS, AeroGRID, IGN, and the GIS User Community  
 3. Projection: NAD83 UTM Zone 19

**Legend:**  
 — Elevation (100 ft)  
 — Roads - NG911

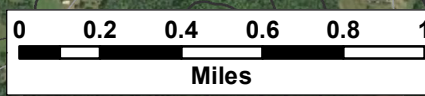
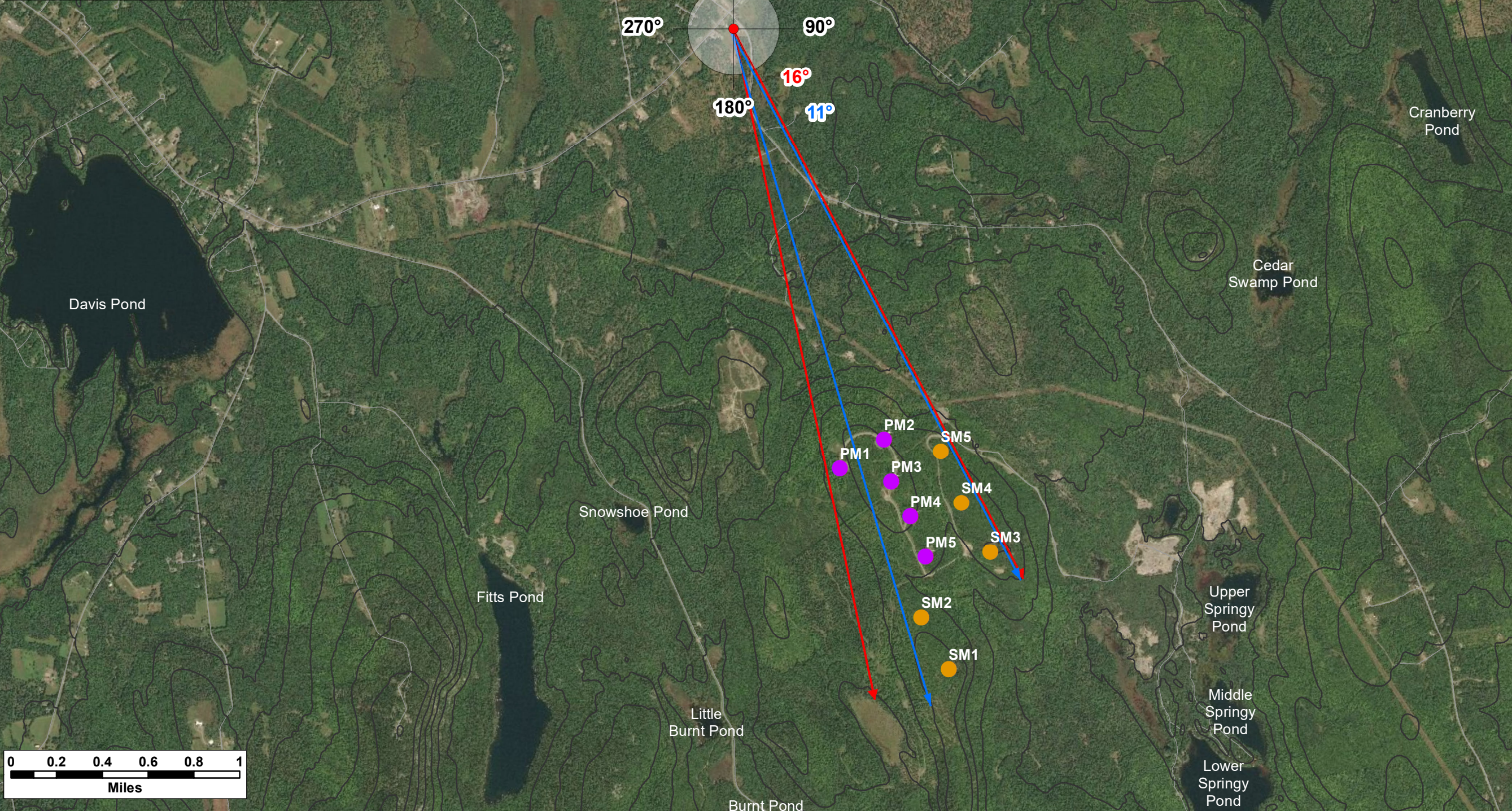
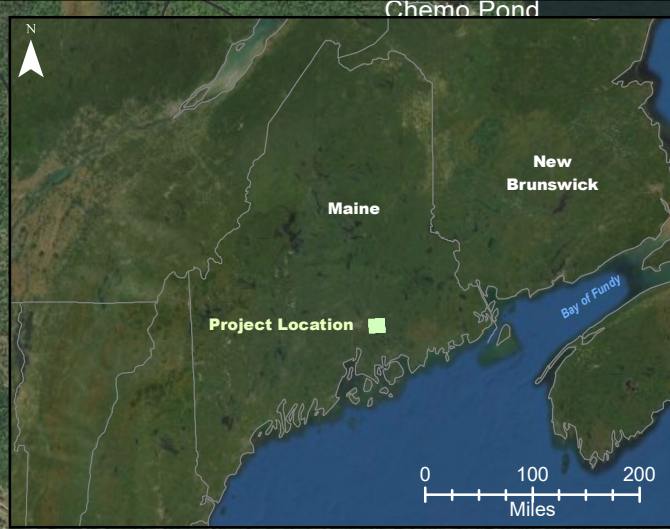


**Silver Maple Wind Project - Cliffwood Hall/ Harold Allen School House Existing Character of Surrounding Area**



Date: April 2020	Project #: 19-6780
Scale: 1:20,000	Drawing #: <b>H1</b>
Drawn By: M. Savelle	
Checked By: S. Dickey	





**Notes:**

1. Data Sources: Maine Office of GIS, Client
2. Basemaps: Esri, DigitalGlobe, GeoEye, Earthstar Geographics, CNES/Airbus DS, USDA, USGS, AeroGRID, IGN, and the GIS User Community
3. Projection: NAD83 UTM Zone 19

**Legend:**

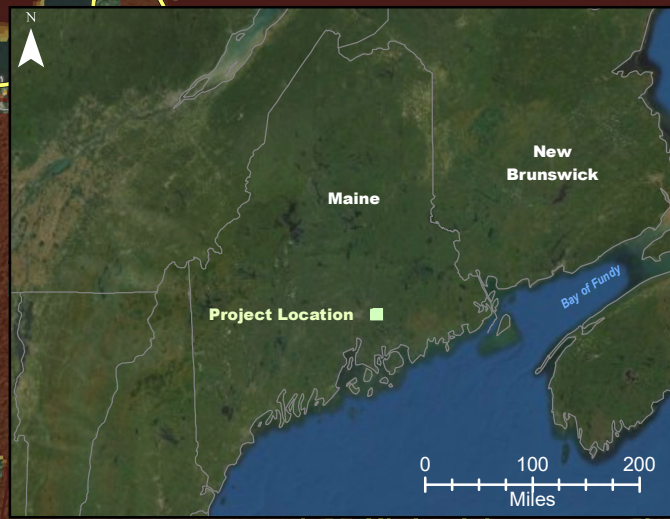
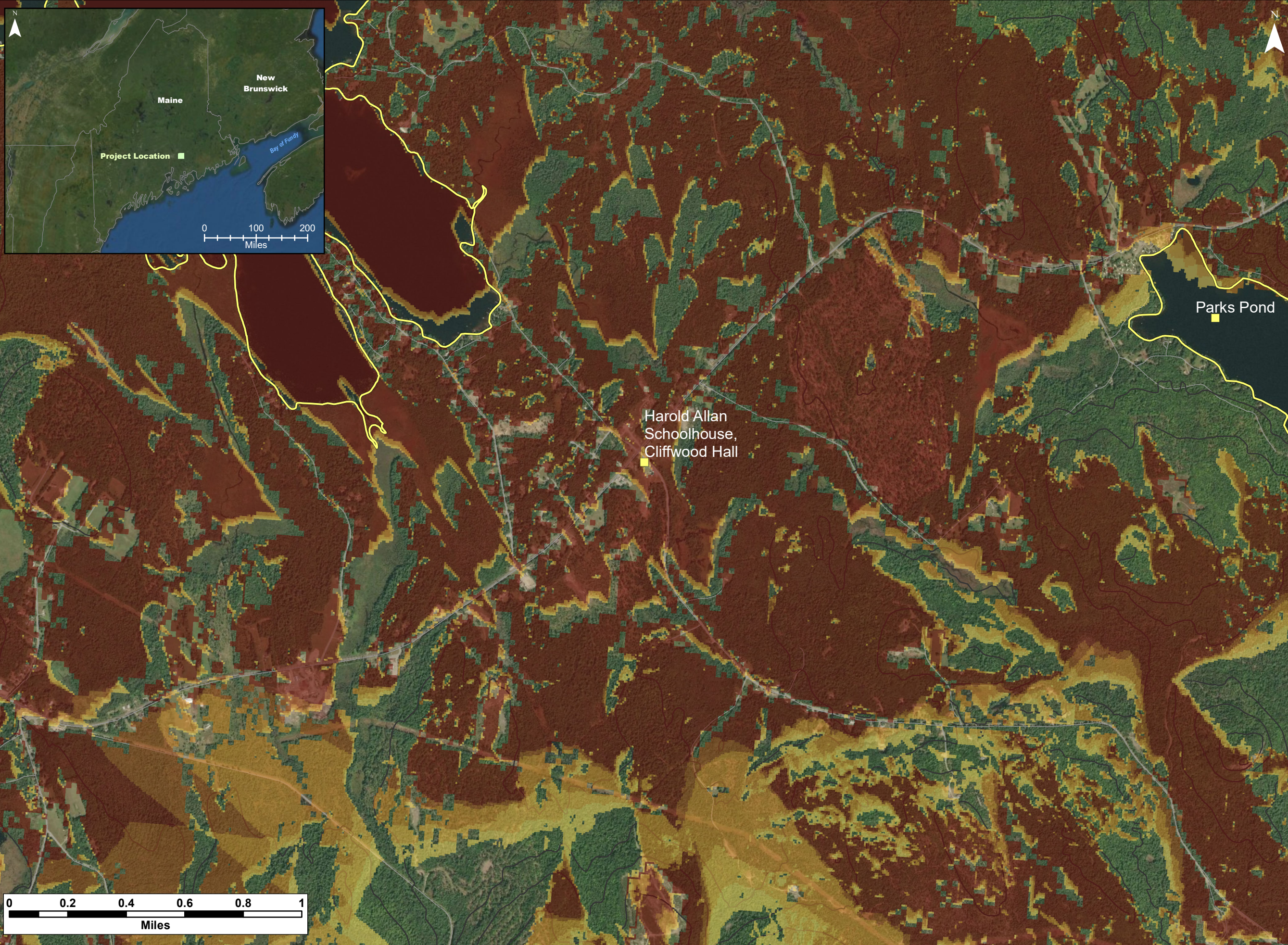
- Pisgah Mountain Turbine (Existing)
- Silver Maple Wind Turbine (Proposed)
- Elevation (100 ft)
- Roads - NG911
- High Visual Impact Investigation Area
- ↔ Horizontal View Angle - Silver Maple and Pisgah Mountain Turbines
- ↔ Horizontal View Angle - Silver Maple Turbines

**Silver Maple Wind Project - Cliffwood Hall / Harold Allen School House Extent of View**



Date: April 2020	Project #: 19-6780
Scale: 1:30,000	Drawing #: <b>H2</b>
Drawn By: M. Savelle	
Checked By: S. Dickey	





**Notes:**  
 1. Data Sources: Maine Office of GIS, Client  
 2. Basemaps: Esri, DigitalGlobe, GeoEye, Earthstar Geographics, CNES/Airbus DS, USDA, USGS, AeroGRID, IGN, and the GIS User Community  
 3. Projection: NAD83 UTM Zone 19

**Legend:**  
 Scenic Resource of State and National Significance  
 SRSNS  
 Elevation (100 ft)  
 Roads - NG911

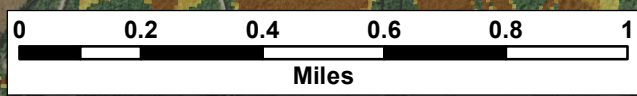
**Number of Visible Turbines**

1
2
3
4
5

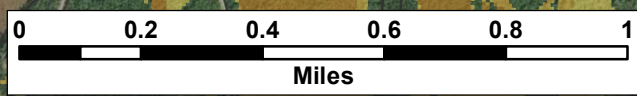
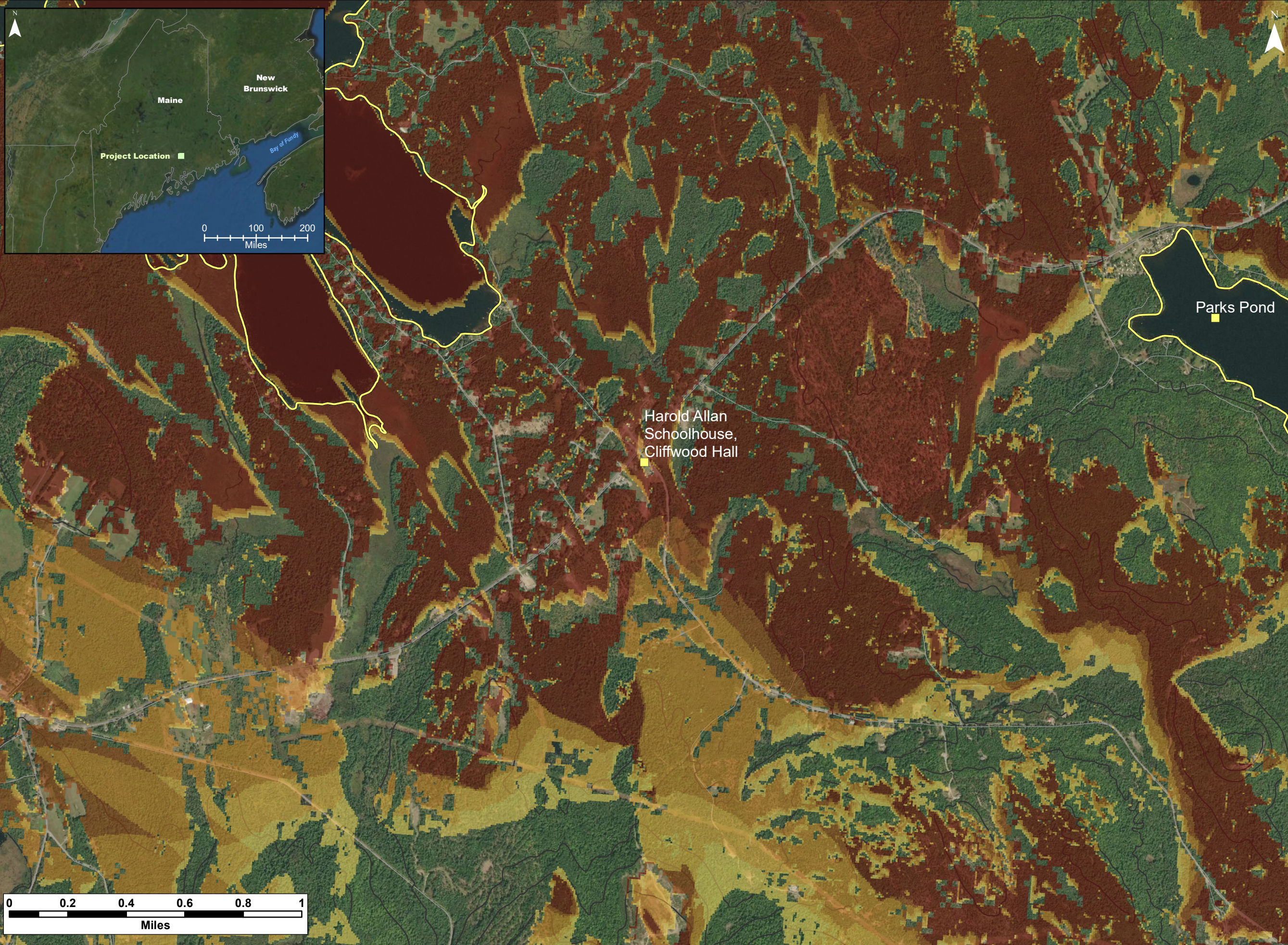
**Silver Maple Wind Project - Viewshed**  
 Cliffwood Hall / Harold Allen School House (Bare Ground / 185 m total height)



Date: April 2020	Project #: 19-6780
Scale: 1:20,000	Drawing #:  <b>H3</b>
Drawn By: M. Savelle	
Checked By: S. Dickey	







**Notes:**  
 1. Data Sources: Maine Office of GIS, Client  
 2. Basemaps: Esri, DigitalGlobe, GeoEye, Earthstar Geographics, CNES/Airbus DS, USDA, USGS, AeroGRID, IGN, and the GIS User Community  
 3. Projection: NAD83 UTM Zone 19

**Legend:**

- SRSNS *Scenic Resource of State and National Significance*
- Elevation (100 ft)
- Roads - NG911

**Number of Visible Turbines**

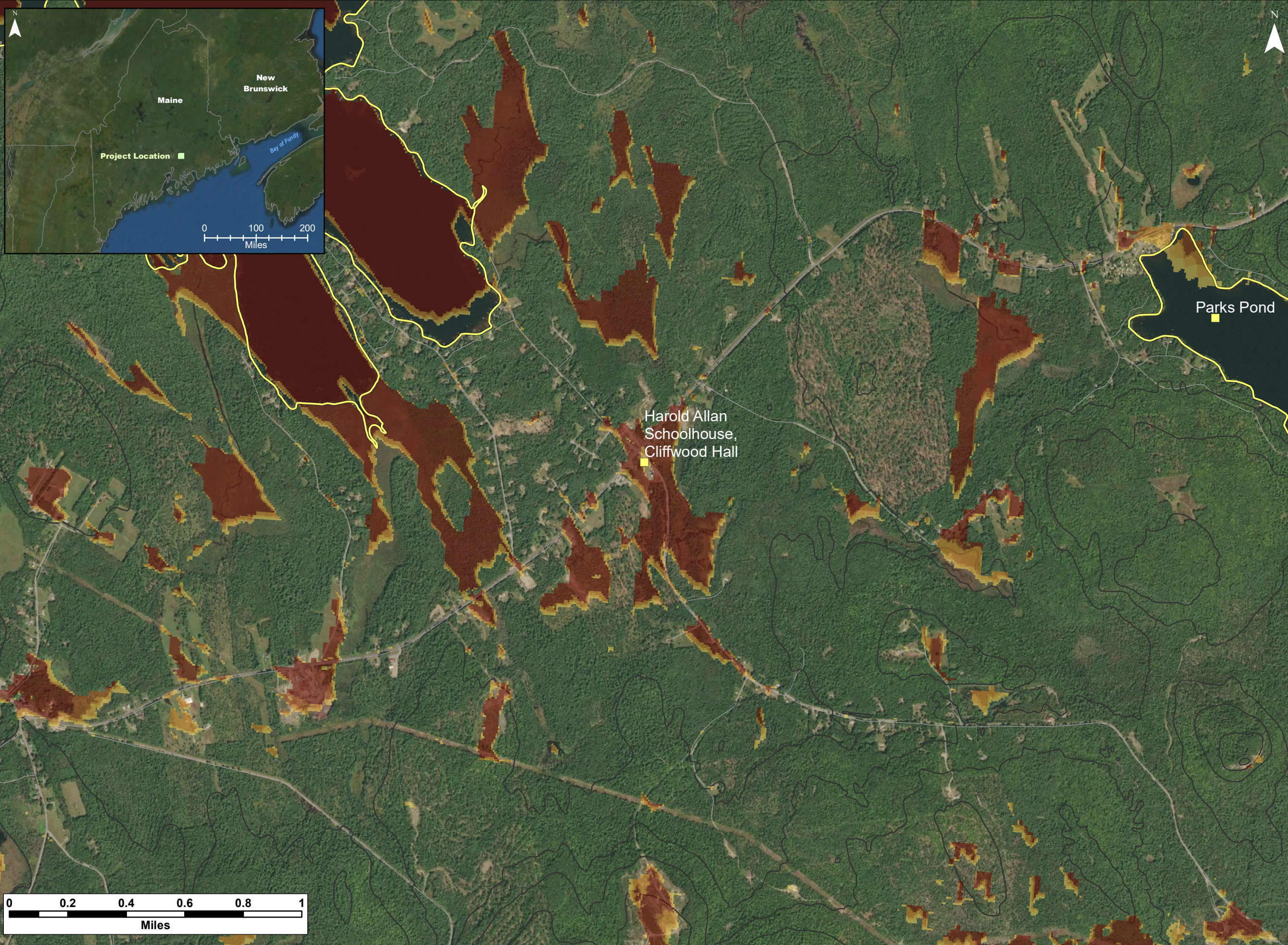
- 1
- 2
- 3
- 4
- 5

*Silver Maple Wind Project - Viewshed  
 Cliffwood Hall /  
 Harold Allen School House (Bare Ground /  
 117 m hub height)*



Date: April 2020	Project #: 19-6780
Scale: 1:20,000	Drawing #:  <b>H4</b>
Drawn By: M. Savelle	
Checked By: S. Dickey	





**Notes:**  
 1. Data Sources: Maine Office of GIS, Client  
 2. Basemaps: Esri, DigitalGlobe, GeoEye, Earthstar Geographics, CNES/Airbus DS, USDA, USGS, AeroGRID, IGN, and the GIS User Community  
 3. Projection: NAD83 UTM Zone 19

**Legend:**

- SRSNS *Scenic Resource of State and National Significance*
- Elevation (100 ft)
- Roads - NG911

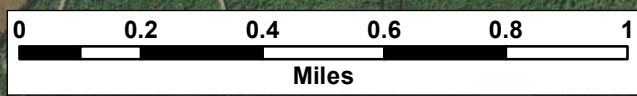
**Number of Visible Turbines**

- 1
- 2
- 3
- 4
- 5

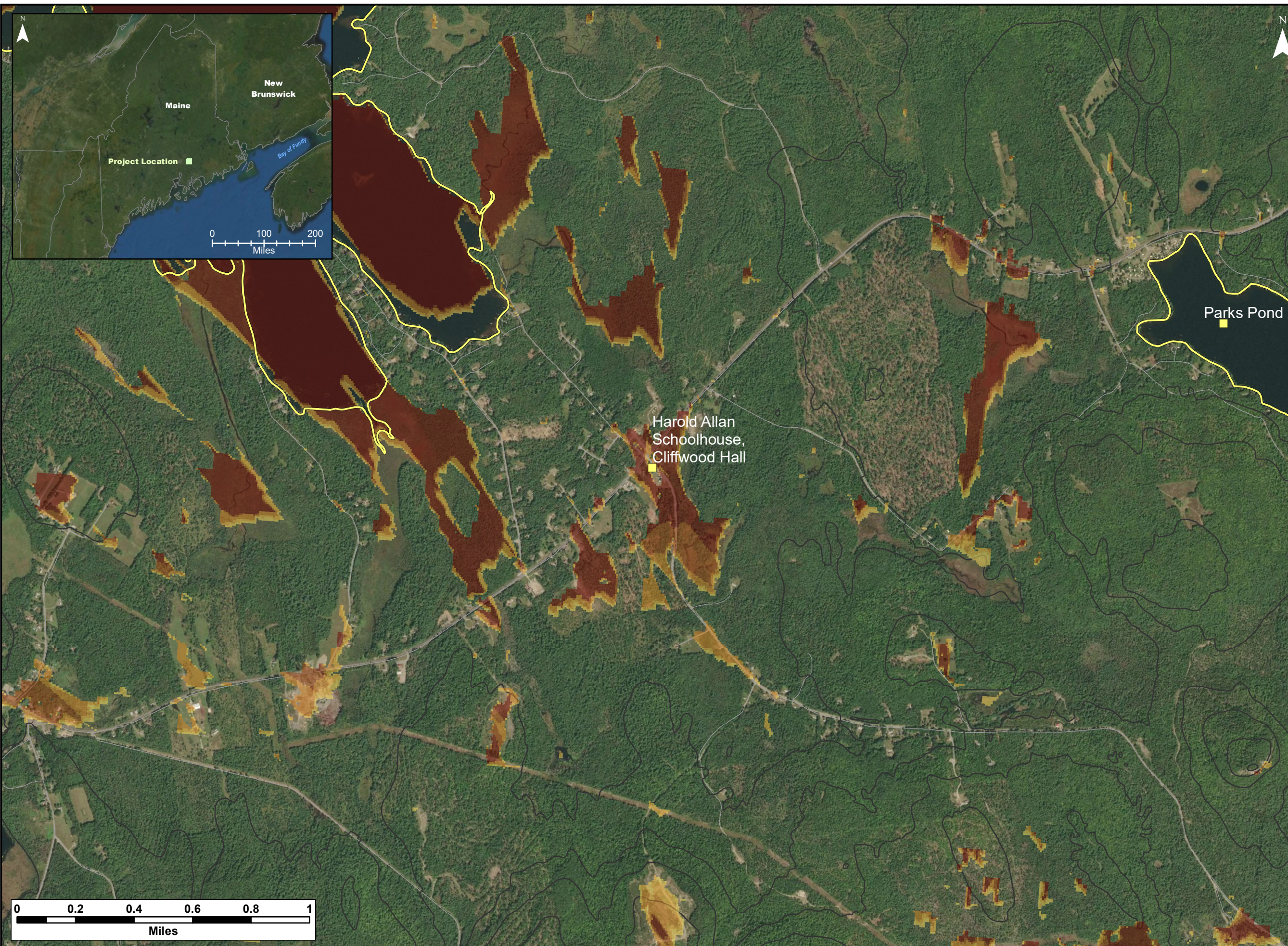
**Silver Maple Wind Project - Viewshed  
 Cliffwood Hall /  
 Harold Allen School House (12 m or 40 ft  
 Forest /185 m total height)**



Date: April 2020	Project #: 19-6780
Scale: 1:20,000	Drawing #:  <b>H5</b>
Drawn By: M. Savelle	
Checked By: S. Dickey	







**Notes:**  
 1. Data Sources: Maine Office of GIS, Client  
 2. Basemaps: Esri, DigitalGlobe, GeoEye, Earthstar Geographics, CNES/Airbus DS, USDA, USGS, AeroGRID, IGN, and the GIS User Community  
 3. Projection: NAD83 UTM Zone 19

**Legend:**  
 Scenic Resource of State and National Significance  
 SRSNS  
 Elevation (100 ft)  
 Roads - NG911

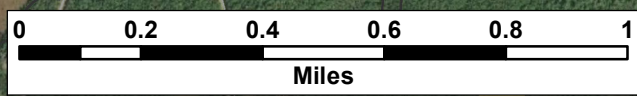
**Number of Visible Turbines**

1
2
3
4
5

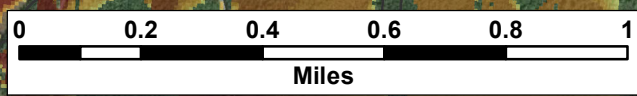
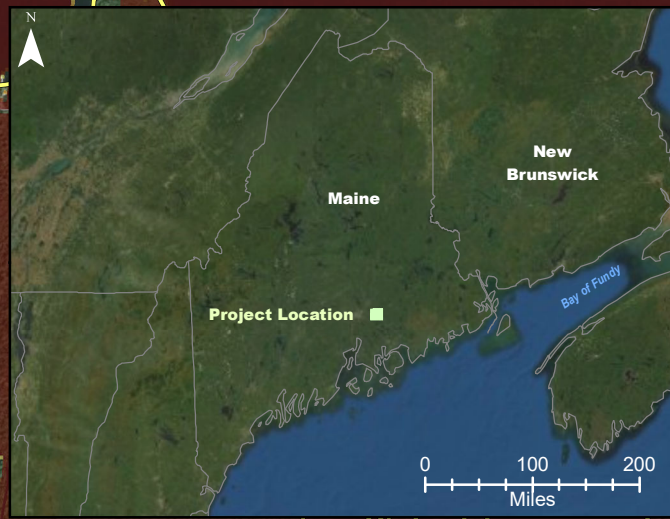
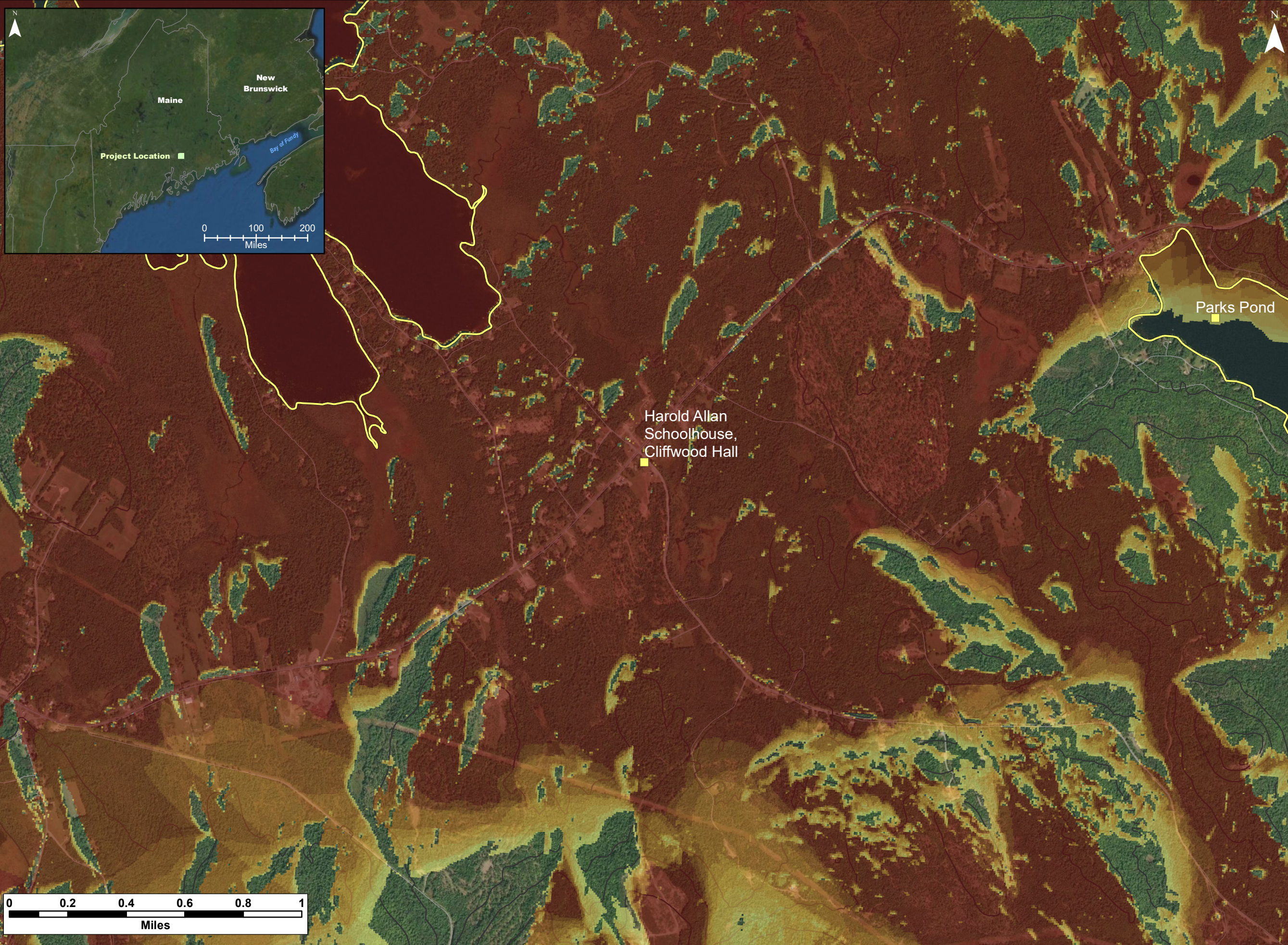
**Silver Maple Wind Project - Viewshed Cliffwood Hall / Harold Allen School House (12 m or 40 ft Forest / 117 m hub height)**



Date: April 2020	Project #: 19-6780
Scale: 1:20,000	Drawing #: <b>H6</b>
Drawn By: M. Savelle	
Checked By: S. Dickey	







**Notes:**  
 1. Data Sources: Maine Office of GIS, Client  
 2. Basemaps: Esri, DigitalGlobe, GeoEye, Earthstar Geographics, CNES/Airbus DS, USDA, USGS, AeroGRID, IGN, and the GIS User Community  
 3. Projection: NAD83 UTM Zone 19

**Legend:**  
 ■ SRSNS Scenic Resource of State and National Significance  
 — Elevation (100 ft)  
 — Roads - NG911

**Number of Visible Turbines**

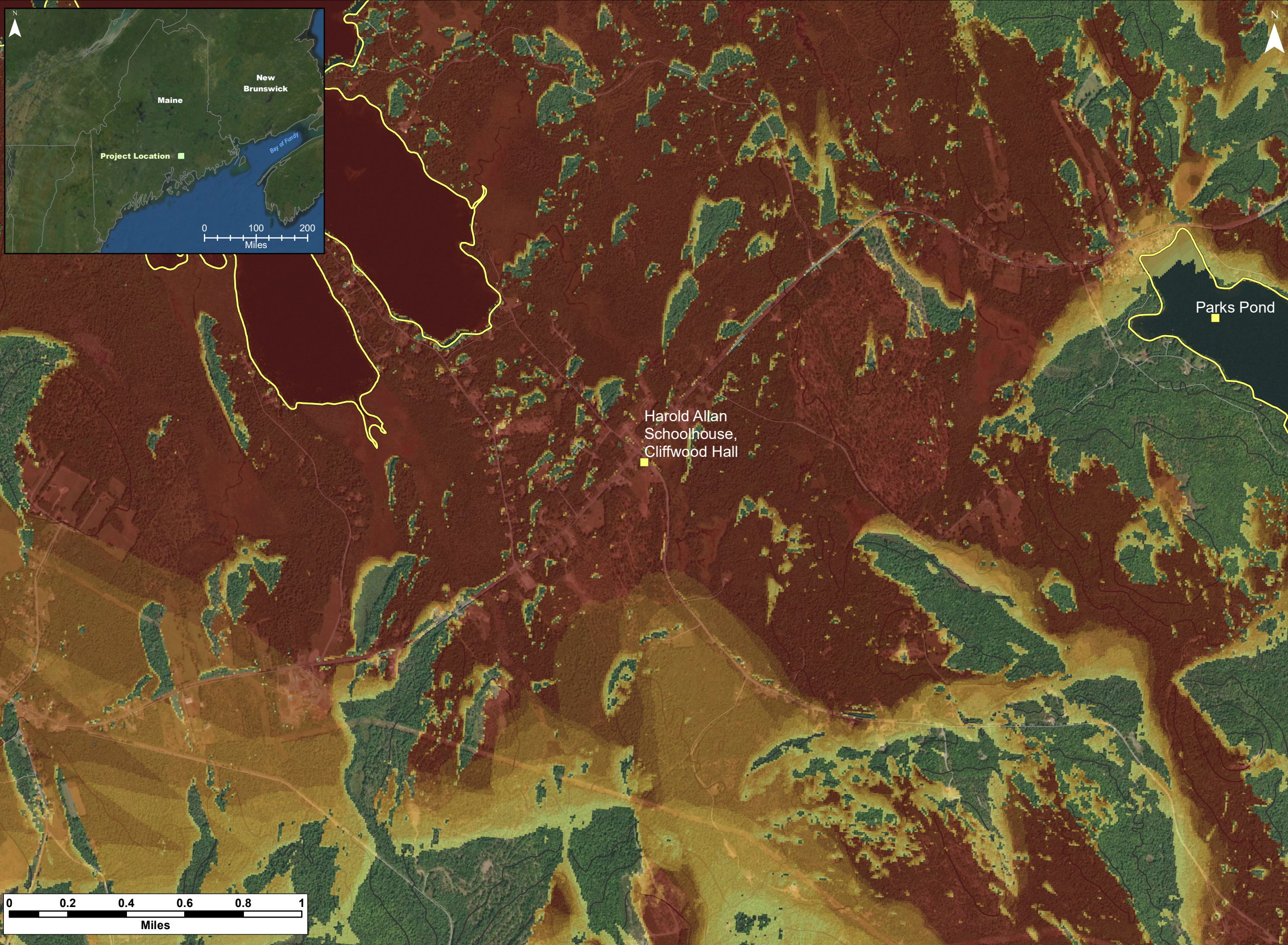
1
2
3
4
5
6
7
8
9
10

**Cumulative Impacts - Silver Maple Wind Project and Pisgah Mountain Wind Project - Viewshed Cliffwood Hall / Harold Allen School House (Bare Ground / 185 m & 145 m total heights)**



Date: April 2020	Project #: 19-6780
Scale: 1:20,000	Drawing #: <b>H7</b>
Drawn By: M. Savelle	
Checked By: S. Dickey	





**Notes:**  
 1. Data Sources: Maine Office of GIS, Client  
 2. Basemaps: Esri, DigitalGlobe, GeoEye, Earthstar Geographics, CNES/Airbus DS, USDA, USGS, AeroGRID, IGN, and the GIS User Community  
 3. Projection: NAD83 UTM Zone 19

**Legend:**  
 ■ SRSNS Scenic Resource of State and National Significance  
 — Elevation (100 ft)  
 — Roads - NG911

**Number of Visible Turbines**

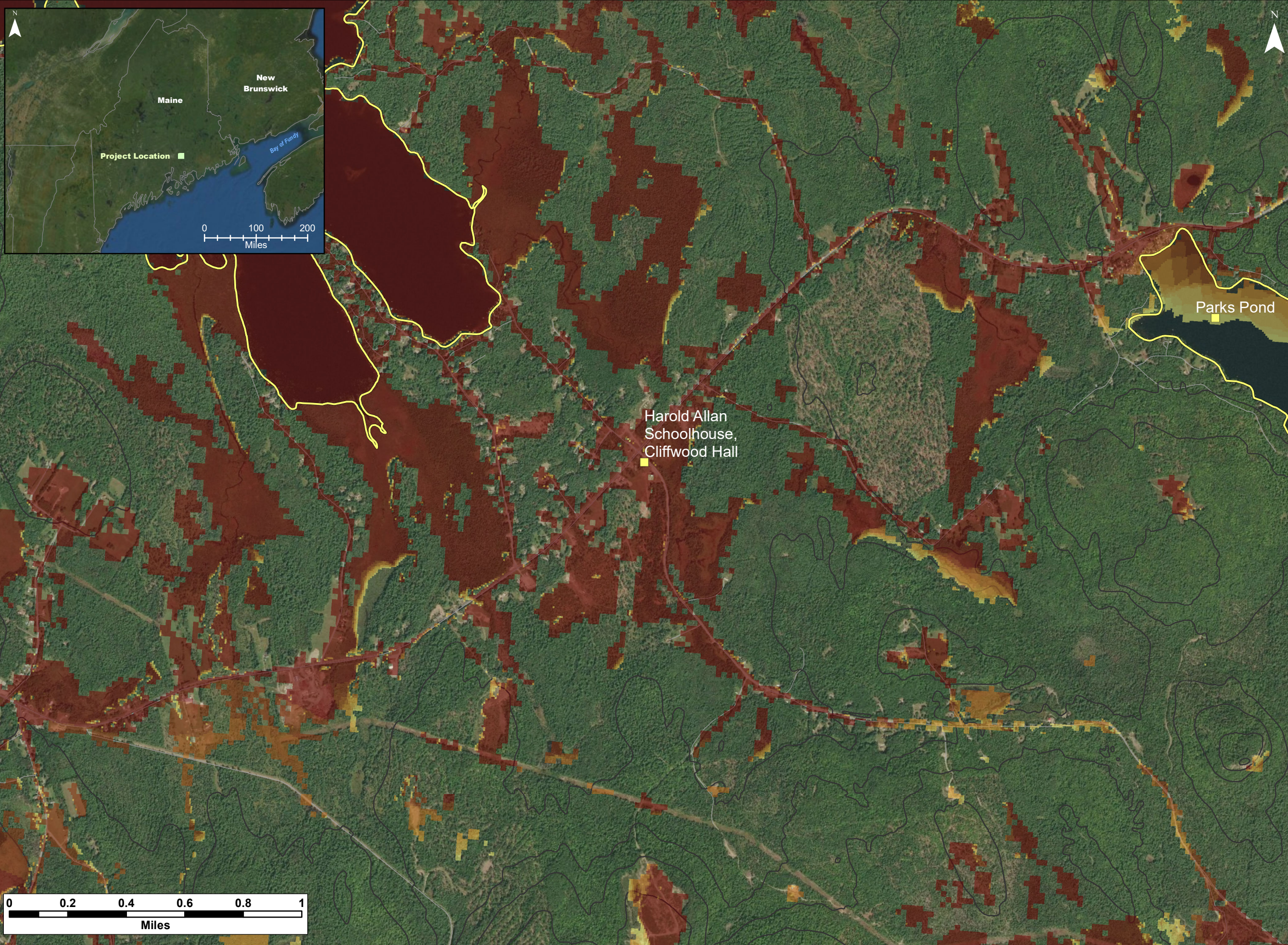
1
2
3
4
5
6
7
8
9
10

**Cumulative Impacts - Silver Maple Wind Project and Pisgah Mountain Wind Project - Viewshed Cliffwood Hall / Harold Allen School House (Bare Ground / 117 m & 95 m hub heights)**



Date: April 2020	Project #: 19-6780
Scale: 1:20,000	Drawing #: <b>H8</b>
Drawn By: M. Savelle	
Checked By: S. Dickey	





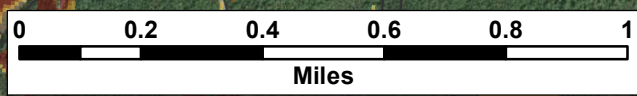
**Notes:**  
 1. Data Sources: Maine Office of GIS, Client  
 2. Basemaps: Esri, DigitalGlobe, GeoEye, Earthstar Geographics, CNES/Airbus DS, USDA, USGS, AeroGRID, IGN, and the GIS User Community  
 3. Projection: NAD83 UTM Zone 19

**Legend:**  
 Scenic Resource of State and National Significance  
 SRSNS  
 Elevation (100 ft)  
 Roads - NG911

**Number of Visible Turbines**

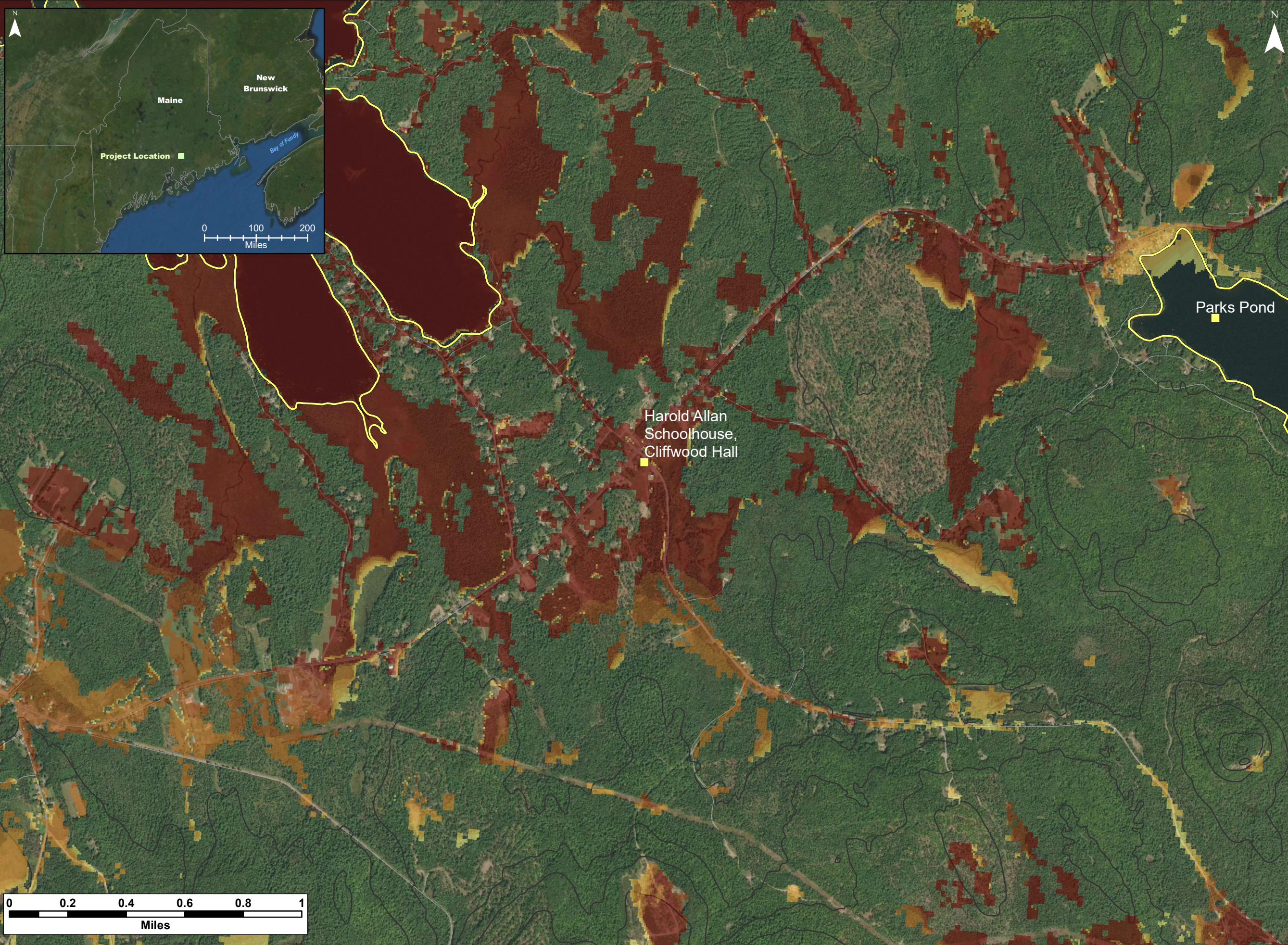
1
2
3
4
5
6
7
8
9
10

**Cumulative Impacts - Silver Maple Wind Project and Pisgah Mountain Wind Project - Viewshed Cliffwood Hall / Harold Allen School House (12 m or 40ft Forest) / 185 m & 145 m total heights)**



Date: April 2020	Project #: 19-6780
Scale: 1:20,000	Drawing #: <b>H9</b>
Drawn By: M. Savelle	
Checked By: S. Dickey	





**Notes:**  
 1. Data Sources: Maine Office of GIS, Client  
 2. Basemaps: Esri, DigitalGlobe, GeoEye, Earthstar Geographics, CNES/Airbus DS, USDA, USGS, AeroGRID, IGN, and the GIS User Community  
 3. Projection: NAD83 UTM Zone 19

**Legend:**  
 ■ SRSNS Scenic Resource of State and National Significance  
 — Elevation (100 ft)  
 — Roads - NG911

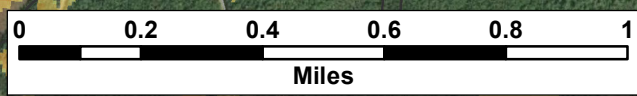
**Number of Visible Turbines**

1
2
3
4
5
6
7
8
9
10

**Cumulative Impacts - Silver Maple Wind Project and Pisgah Mountain Wind Project - Viewshed Cliffwood Hall / Harold Allen School House (12 m or 40ft Forest) / 117 m & 95 m hub heights)**



Date: April 2020	Project #: 19-6780
Scale: 1:20,000	Drawing #: <b>H10</b>
Drawn By: M. Savelle	
Checked By: S. Dickey	







H11a





**H11b**





H12

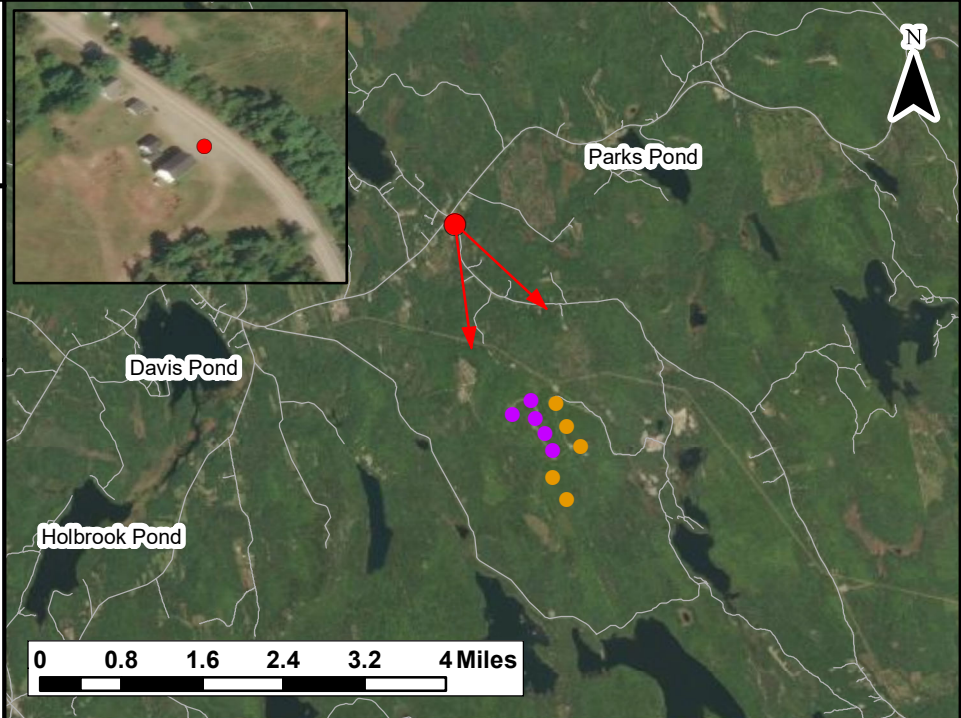




Cliffwood Hall / Harold Allen School House

**Notes:**  
 1. Data Sources: Maine Office of GIS, Client  
 2. Basemaps: Esri, DigitalGlobe, GeoEye, Earthstar Geographics, CNES/Airbus DS, USDA, USGS, AeroGRID, IGN, and the GIS User Community  
 3. Projection: NAD83 UTM Zone 19

**Legend:**  
 ● Pisgah Mountain Turbine (Existing)  
 ● Silver Maple Wind Turbine (Proposed)  
 — Roads - NG911  
 ↗ ↘ ↙ ↚ Photosimulation Field of View



TECHNICAL INFORMATION	
Name of SRSNS:	Cliffwood Hall/Harold Allen School House
View Coordinates:	Latitude: 44° 48' 19" Longitude: -68° 32' 21" Easting: 536378 m Northing: 4961420 m
Direction of View:	South to Southeast, Heading 156°
Camera Make/ Model:	Canon EOS 800D
Focal Length:	31.25 mm
Effective Focal Length:	50 mm
Image Resolution:	6000 x 2500
Weather Conditions:	Sunny, Clear Sky
Date of Photo:	2020/02/24
Time of Photo:	14:40
Photo Credit:	CES Inc., Brewer, Maine

**Silver Maple Wind Project Expansion - Photosimulation for Cliffwood Hall & Harold Allen School House**

Date:	Project #:
March 2020	19-6780
Scale:	Drawing #:
1:120,000	<b>H13a</b>
Drawn By:	Checked By:
M. Savelle	S. Dickey

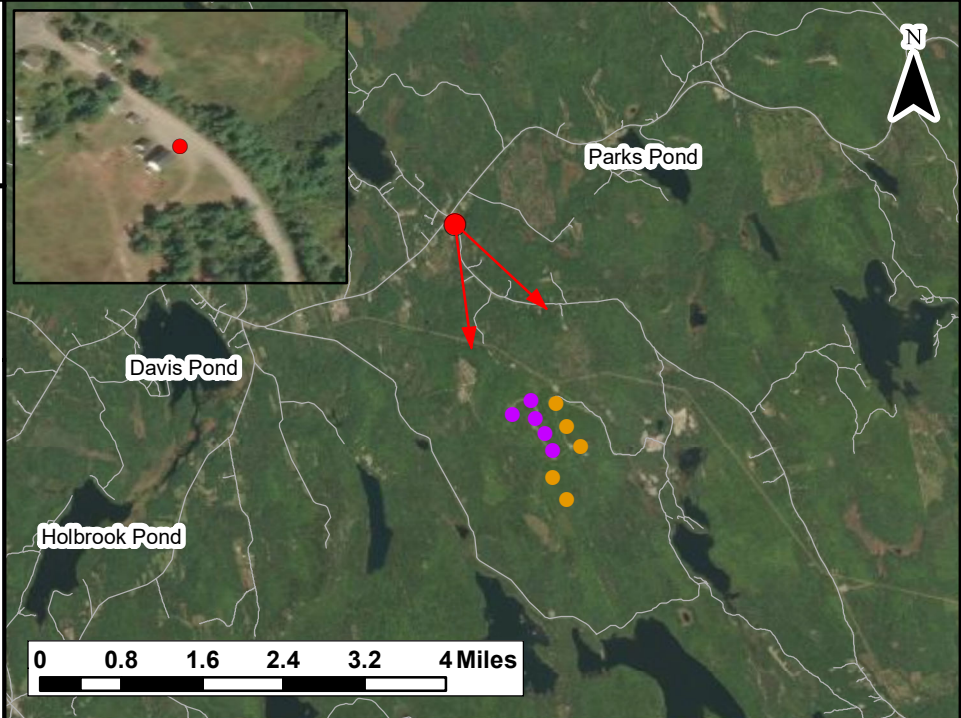




Cliffwood Hall / Harold Allen School House

**Notes:**  
 1. Data Sources: Maine Office of GIS, Client  
 2. Basemaps: Esri, DigitalGlobe, GeoEye, Earthstar Geographics, CNES/Airbus DS, USDA, USGS, AeroGRID, IGN, and the GIS User Community  
 3. Projection: NAD83 UTM Zone 19

**Legend:**  
 ● Pisgah Mountain Turbine (Existing)  
 ● Silver Maple Wind Turbine (Proposed)  
 — Roads - NG911  
 ↗ ↘ Photosimulation Field of View



TECHNICAL INFORMATION	
Name of SRSNS:	Cliffwood Hall/Harold Allen School House
View Coordinates:	Latitude: 44° 48' 19" Longitude: -68° 32' 21" Easting: 536378 m Northing: 4961420 m
Direction of View:	South to Southeast, Heading 156°
Camera Make/ Model:	Canon EOS 800D
Focal Length:	31.25 mm
Effective Focal Length:	50 mm
Image Resolution:	6000 x 2500
Weather Conditions:	Sunny, Clear Sky
Date of Photo:	2020/02/24
Time of Photo:	14:40
Photo Credit:	CES Inc., Brewer, Maine

**Silver Maple Wind Project Expansion - Photosimulation for Cliffwood Hall & Harold Allen School House**

Date:	Project #:
March 2020	19-6780
Scale:	Drawing #:
1:120,000	<b>H13b</b>
Drawn By:	Checked By:
M. Savelle	S. Dickey





**H14**