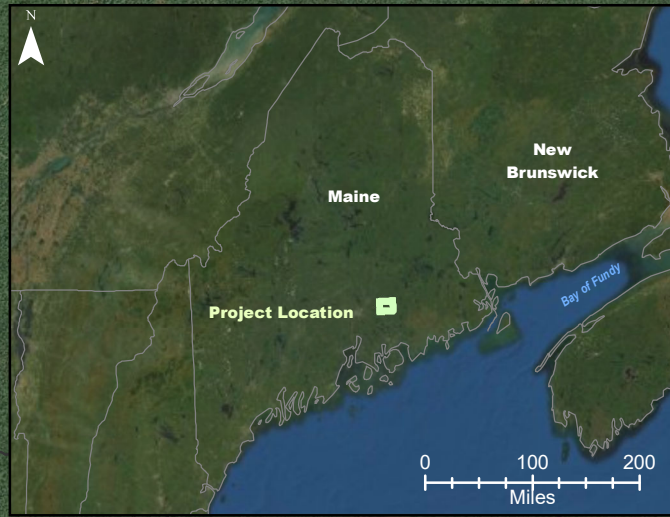
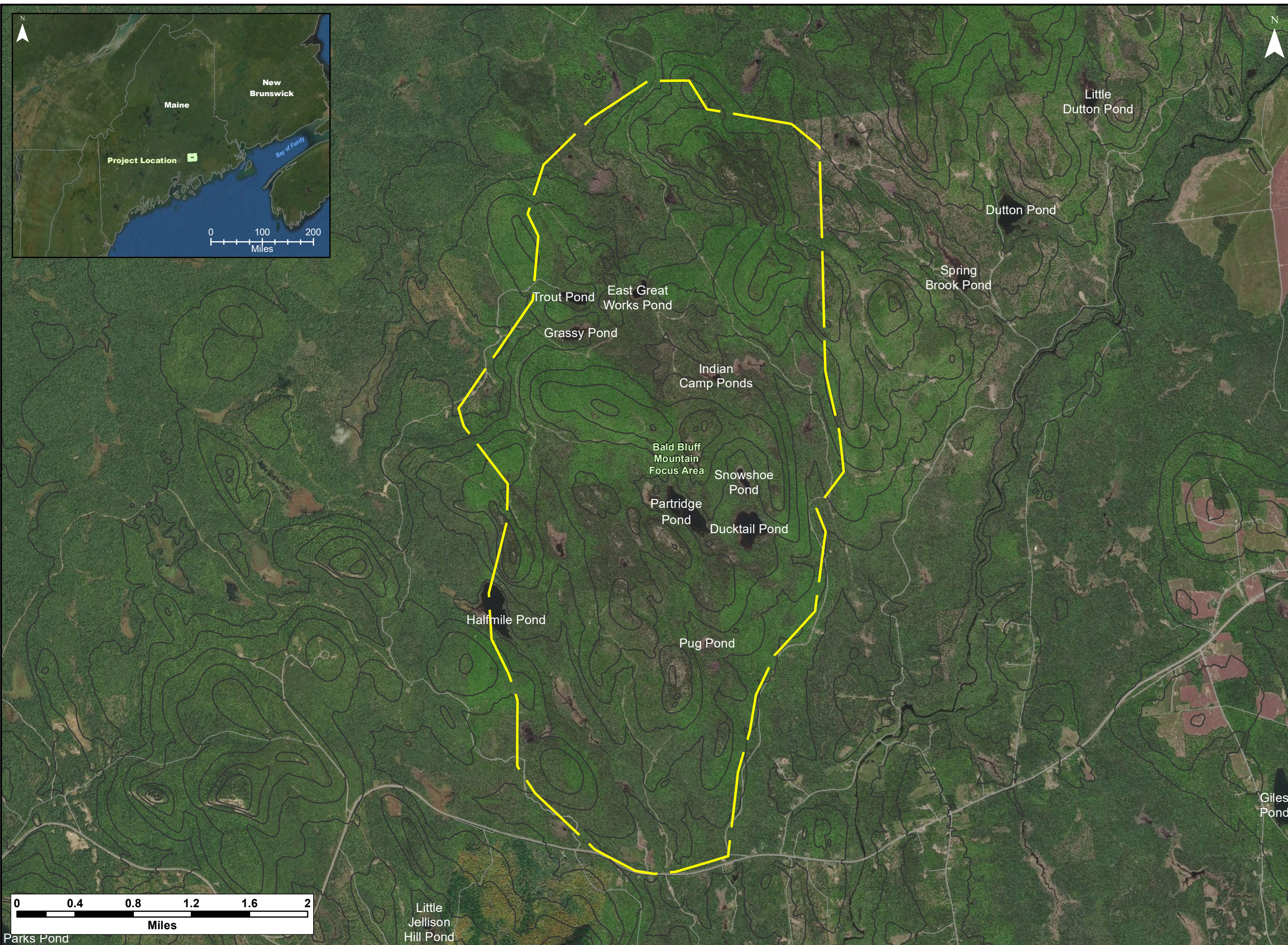


APPENDIX G
BALD BLUFF FOCUS AREA



Notes:
 1. Data Sources: Maine Office of GIS, Client
 2. Basemaps: Esri, DigitalGlobe, GeoEye, Earthstar Geographics, CNES/Airbus DS, USDA, USGS, AeroGRID, IGN, and the GIS User Community
 3. Projection: NAD83 UTM Zone 19

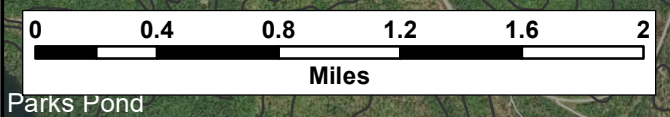
Legend:
 — Elevation (100 ft)
 — Roads - NG911
 [Yellow outline] Conserved Lands Focus Areas

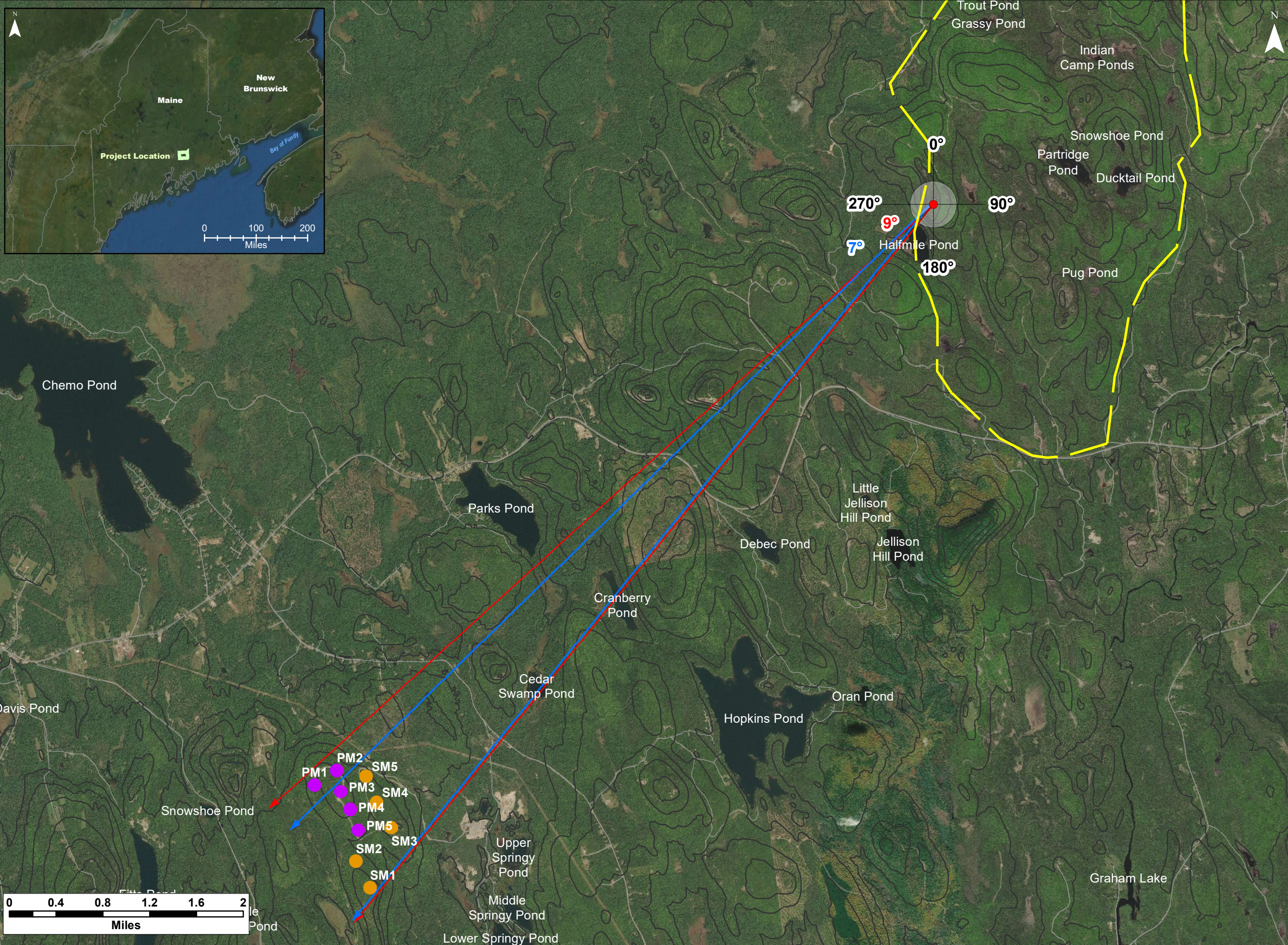


Silver Maple Wind Project - Bald Bluff Existing Character of Surrounding Area



Date:	April 2020	Project #:	19-6780
Scale:	1:40,000	Drawing #:	G1
Drawn By:	M. Savelle		
Checked By:	S. Dickey		





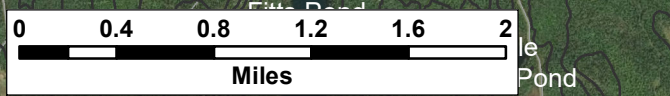
Notes:
 1. Data Sources: Maine Office of GIS, Client
 2. Basemaps: Esri, DigitalGlobe, GeoEye, Earthstar Geographics, CNES/Airbus DS, USDA, USGS, AeroGRID, IGN, and the GIS User Community
 3. Projection: NAD83 UTM Zone 19

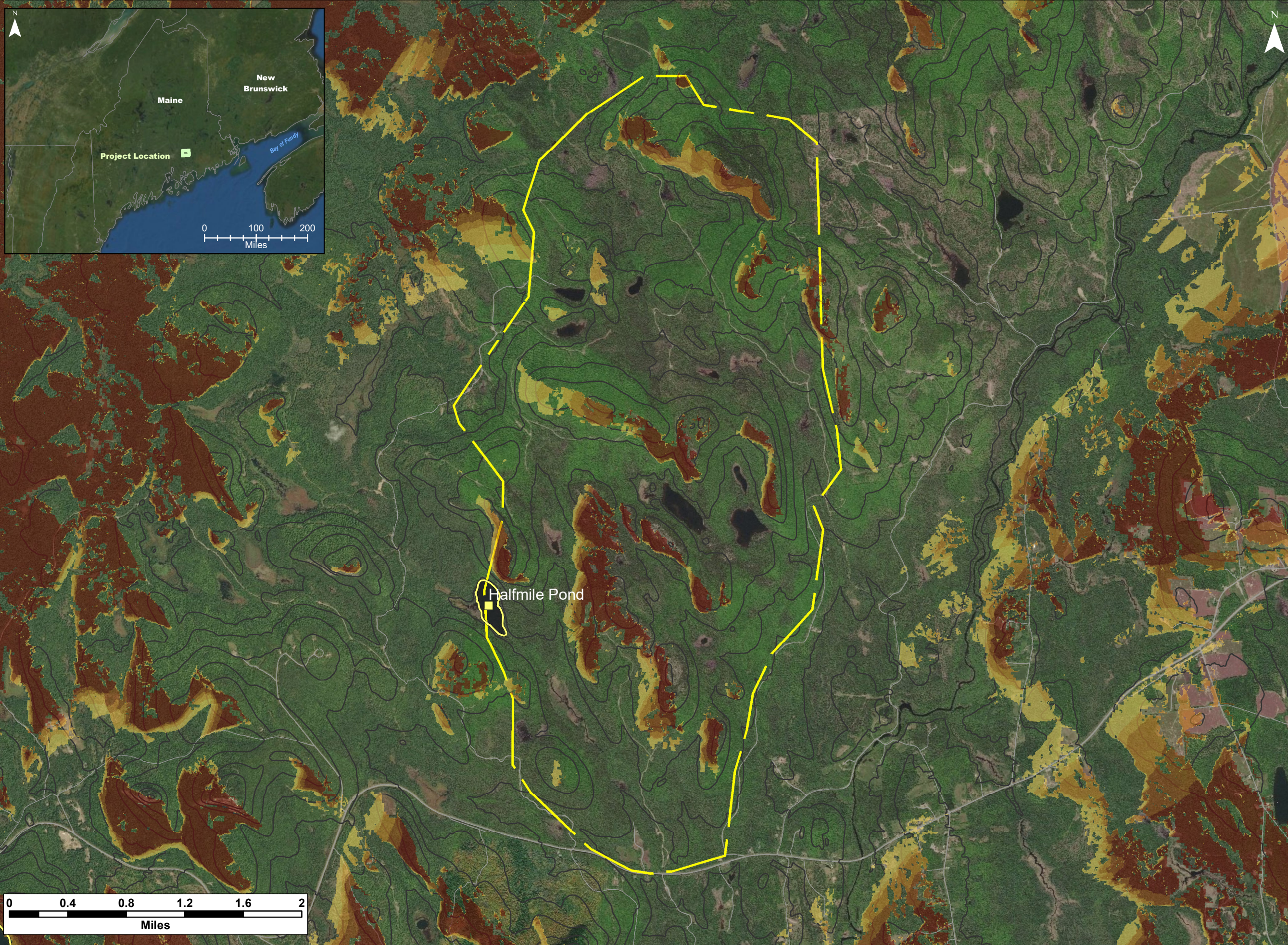
- Legend:**
- Pisgah Mountain Turbine (Existing)
 - Silver Maple Wind Turbine (Proposed)
 - Elevation (100 ft)
 - Roads - NG911
 - ▭ Conserved Lands Focus Areas
 - High Visual Impact Investigation Area
 - ↔ Horizontal View Angle - Silver Maple and Pisgah Mountain Turbines
 - ↔ Horizontal View Angle - Silver Maple Turbines

Silver Maple Wind Project - Bald Bluff Extent of View



Date: April 2020	Project #: 19-6780
Scale: 1:50,000	Drawing #: G2
Drawn By: M. Savelle	
Checked By: S. Dickey	





Notes:
 1. Data Sources: Maine Office of GIS, Client
 2. Basemaps: Esri, DigitalGlobe, GeoEye, Earthstar Geographics, CNES/Airbus DS, USDA, USGS, AeroGRID, IGN, and the GIS User Community
 3. Projection: NAD83 UTM Zone 19

Legend:

- Scenic Resource of State and National Significance
- Elevation (100 ft)
- Roads - NG911
- Conserved Lands Focus Areas

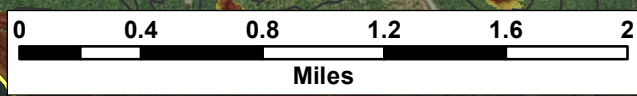
Number of Visible Turbines

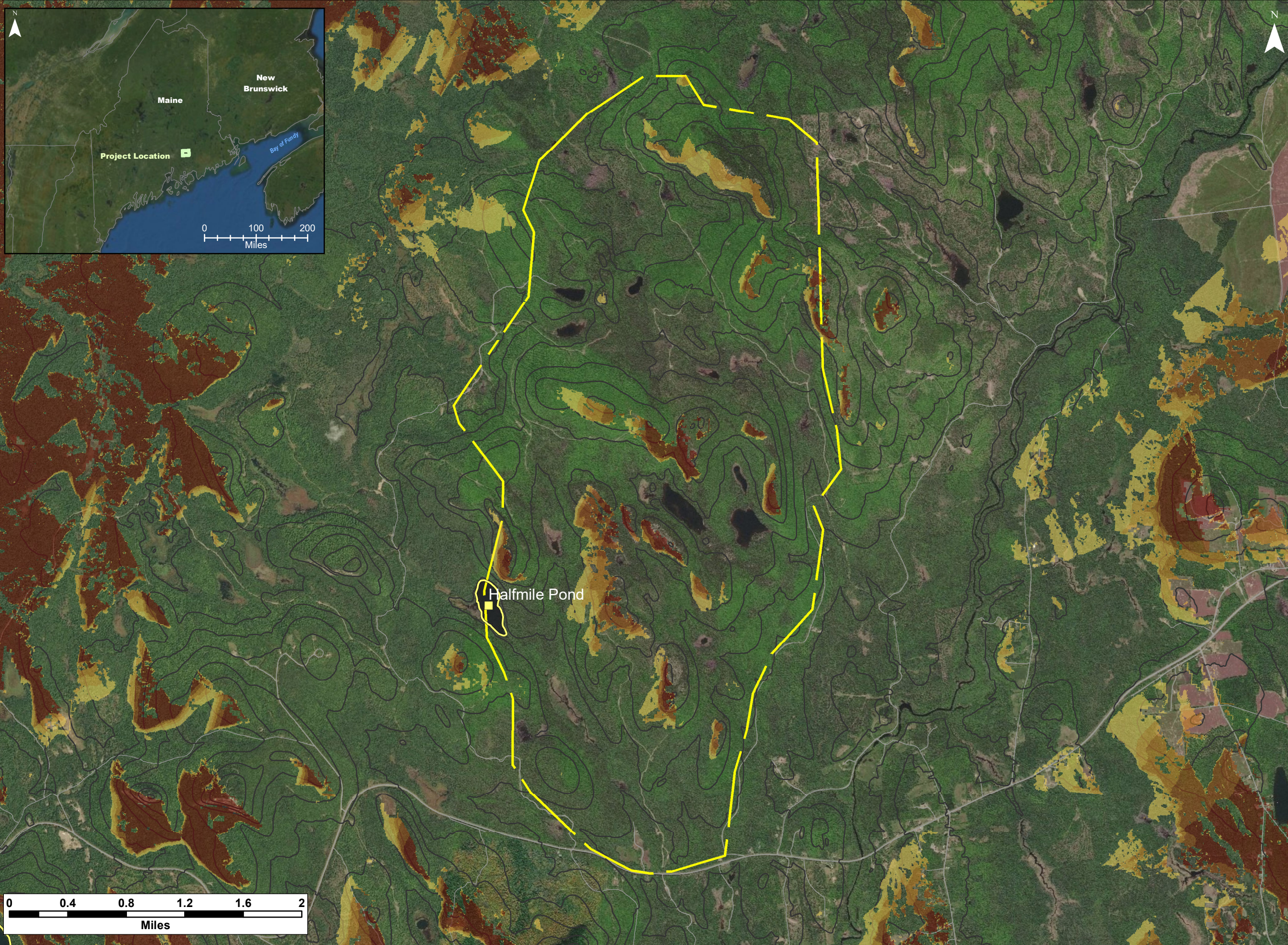
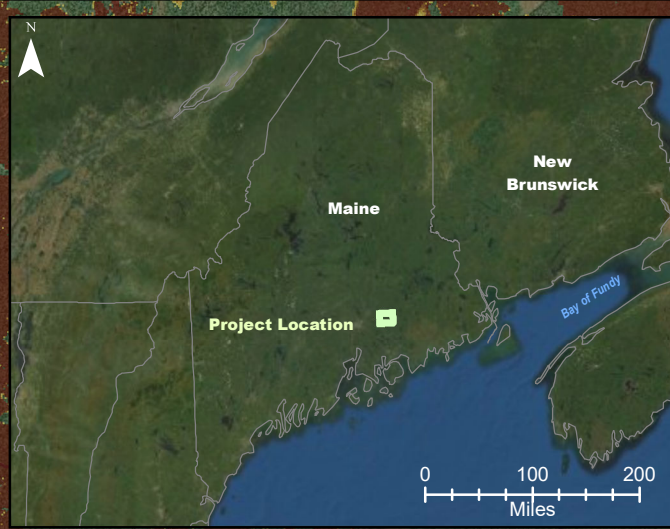
- 1
- 2
- 3
- 4
- 5

**Silver Maple Wind Project - Viewshed
 Bald Bluff
 (Bare Ground /
 185 m total height)**



Date: April 2020	Project #: 19-6780
Scale: 1:40,000	Drawing #: G3
Drawn By: M. Savelle	
Checked By: S. Dickey	





Notes:
 1. Data Sources: Maine Office of GIS, Client
 2. Basemaps: Esri, DigitalGlobe, GeoEye, Earthstar Geographics, CNES/Airbus DS, USDA, USGS, AeroGRID, IGN, and the GIS User Community
 3. Projection: NAD83 UTM Zone 19

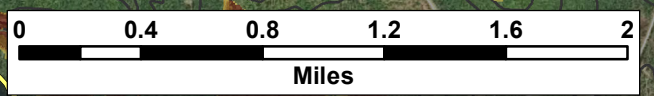
Legend:
 Scenic Resource of State and National Significance
 SRSNS
 Elevation (100 ft)
 Roads - NG911
 Conserved Lands Focus Areas

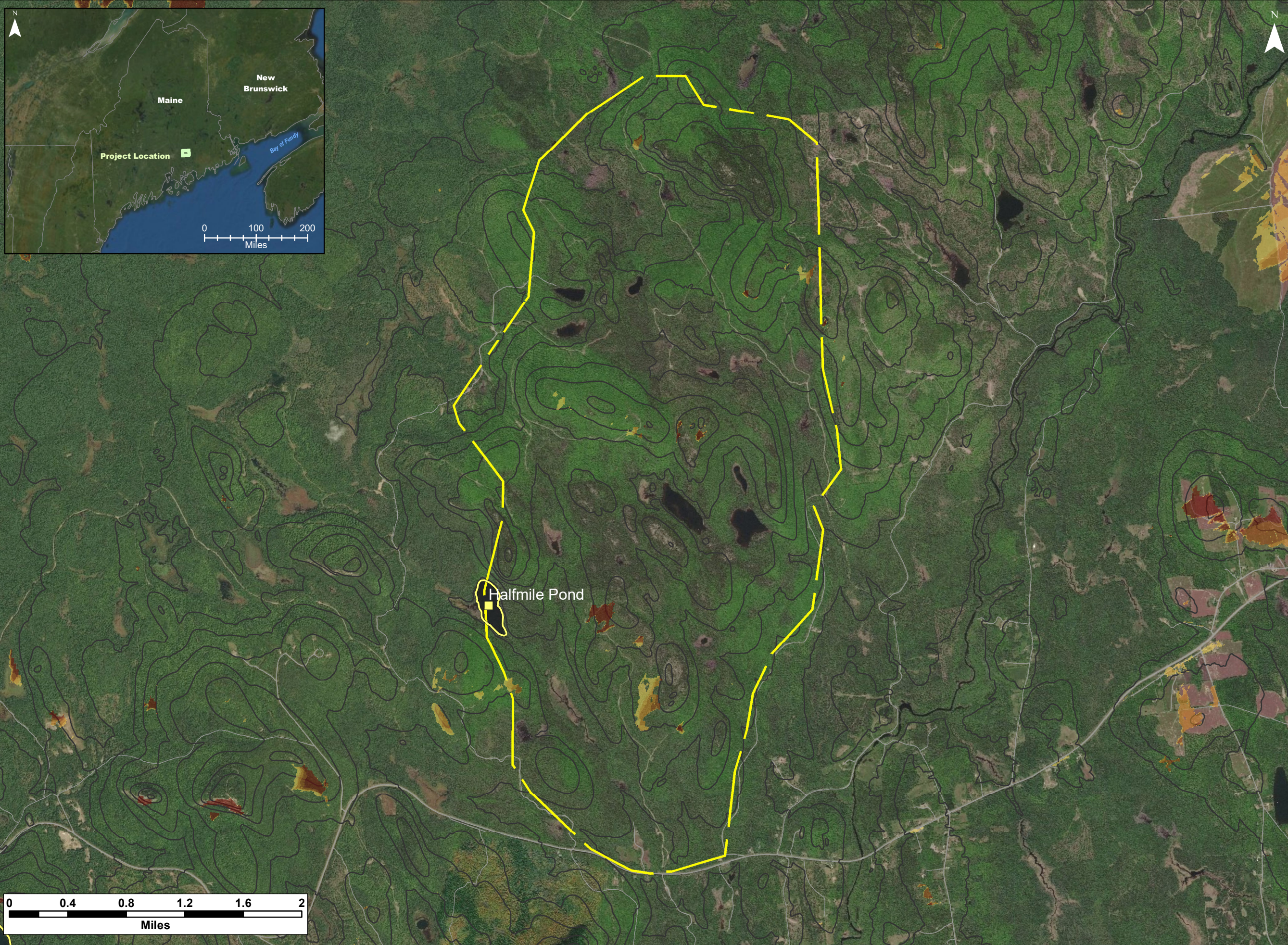
Number of Visible Turbines
 1
 2
 3
 4
 5

Silver Maple Wind Project - Viewshed Bald Bluff (Bare Ground / 117 m hub height)



Date: April 2020	Project #: 19-6780
Scale: 1:40,000	Drawing #: G4
Drawn By: M. Savelle	
Checked By: S. Dickey	





Notes:
 1. Data Sources: Maine Office of GIS, Client
 2. Basemaps: Esri, DigitalGlobe, GeoEye, Earthstar Geographics, CNES/Airbus DS, USDA, USGS, AeroGRID, IGN, and the GIS User Community
 3. Projection: NAD83 UTM Zone 19

Legend:

- Scenic Resource of State and National Significance
- Elevation (100 ft)
- Roads - NG911
- Conserved Lands Focus Areas

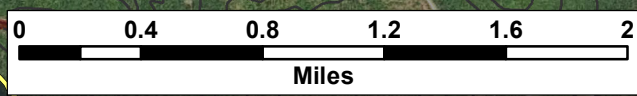
Number of Visible Turbines

- 1
- 2
- 3
- 4
- 5

Silver Maple Wind Project - Viewshed Bald Bluff
 (12 m or 40 ft Forest / 185 m total height)



Date: April 2020	Project #: 19-6780
Scale: 1:40,000	Drawing #: G5
Drawn By: M. Savelle	
Checked By: S. Dickey	





Notes:
 1. Data Sources: Maine Office of GIS, Client
 2. Basemaps: Esri, DigitalGlobe, GeoEye, Earthstar Geographics, CNES/Airbus DS, USDA, USGS, AeroGRID, IGN, and the GIS User Community
 3. Projection: NAD83 UTM Zone 19

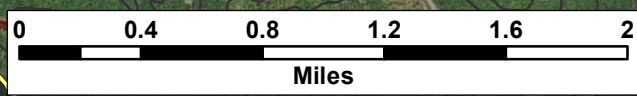
Legend:
 Scenic Resource of State and National Significance
 SRSNS
 Elevation (100 ft)
 Roads - NG911
 Conserved Lands Focus Areas

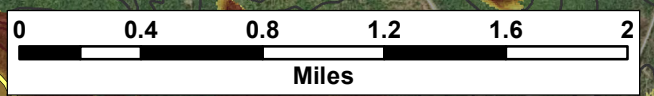
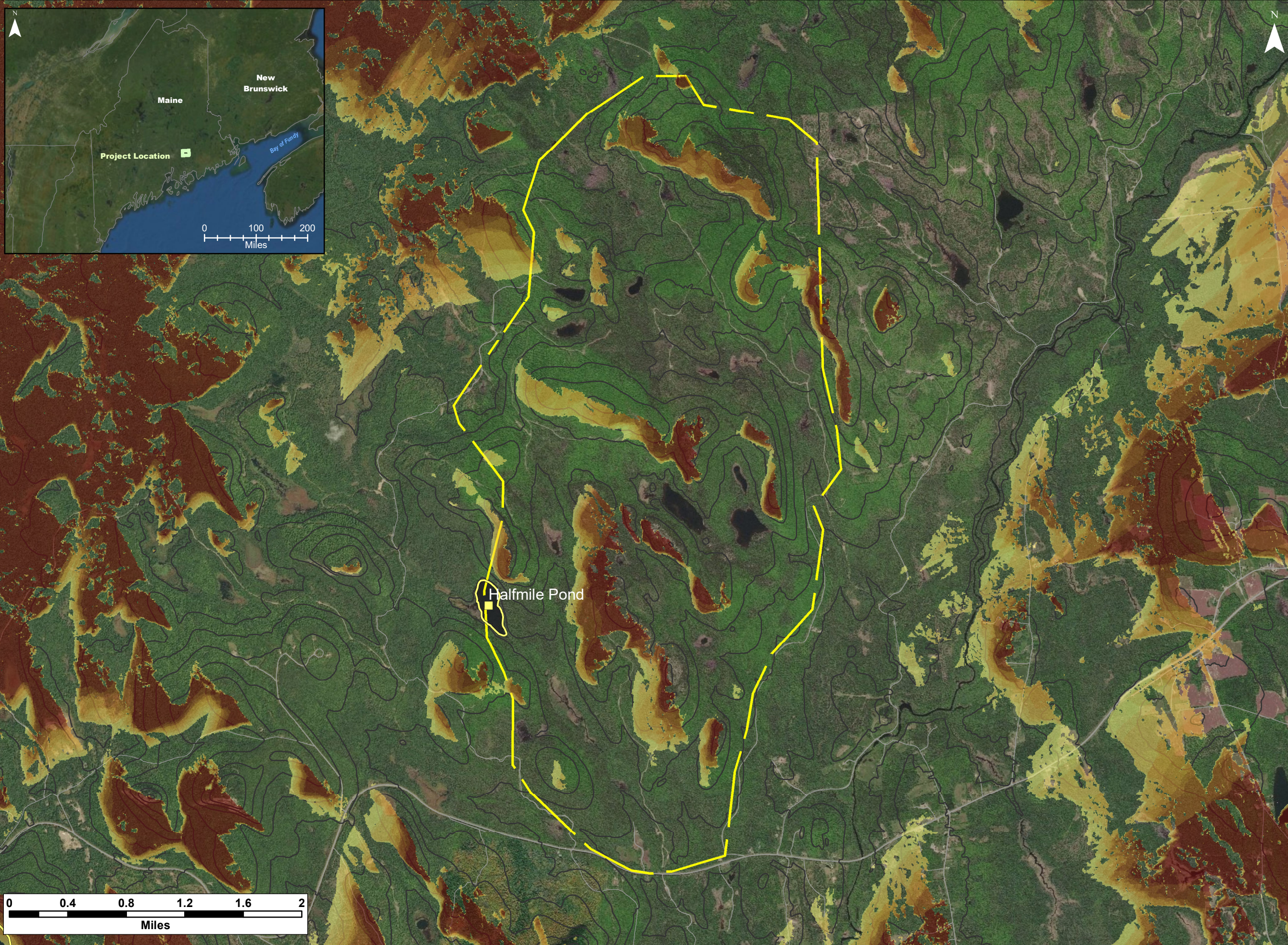
Number of Visible Turbines
 1
 2
 3
 4
 5

Silver Maple Wind Project - Viewshed Bald Bluff
 (12 m or 40 ft Forest / 117 m hub height)



Date: April 2020	Project #: 19-6780
Scale: 1:40,000	Drawing #: G6
Drawn By: M. Savelle	
Checked By: S. Dickey	





Notes:
 1. Data Sources: Maine Office of GIS, Client
 2. Basemaps: Esri, DigitalGlobe, GeoEye, Earthstar Geographics, CNES/Airbus DS, USDA, USGS, AeroGRID, IGN, and the GIS User Community
 3. Projection: NAD83 UTM Zone 19

Legend:

- SRSNS Scenic Resource of State and National Significance
- Elevation (100 ft)
- Roads - NG911
- Conserved Lands Focus Areas

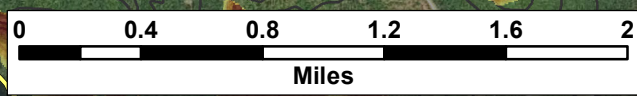
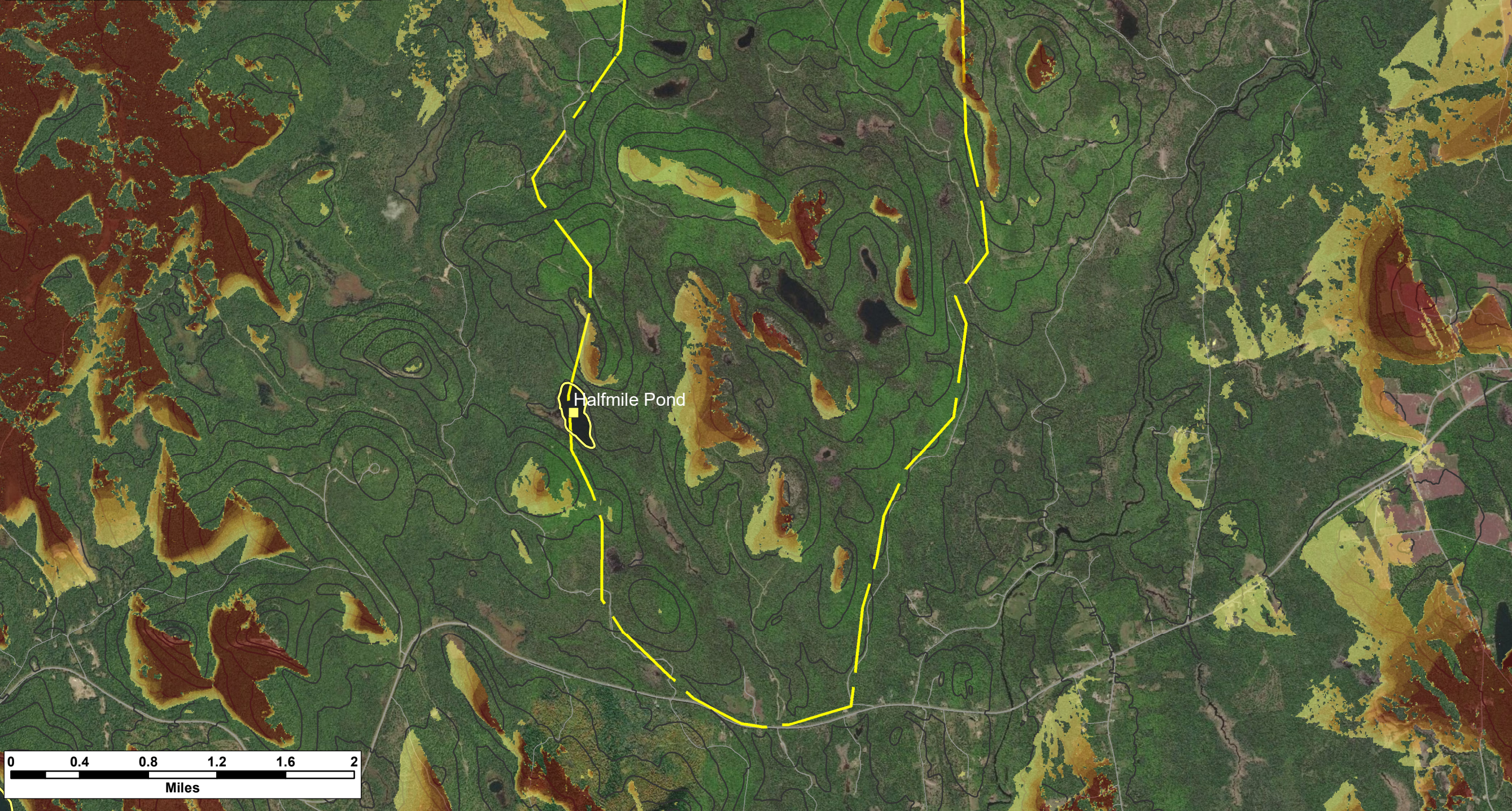
Number of Visible Turbines

1
2
3
4
5
6
7
8
9
10

Cumulative Impacts - Silver Maple Wind Project and Pisgah Mountain Wind Project - Viewshed Bald Bluff (Bare Ground / 185 m & 145 m total heights)



Date: April 2020	Project #: 19-6780
Scale: 1:40,000	Drawing #: G7
Drawn By: M. Savelle	
Checked By: S. Dickey	



Notes:
 1. Data Sources: Maine Office of GIS, Client
 2. Basemaps: Esri, DigitalGlobe, GeoEye, Earthstar Geographics, CNES/Airbus DS, USDA, USGS, AeroGRID, IGN, and the GIS User Community
 3. Projection: NAD83 UTM Zone 19

Legend:

- SRSNS Scenic Resource of State and National Significance
- Elevation (100 ft)
- Roads - NG911
- Conserved Lands Focus Areas

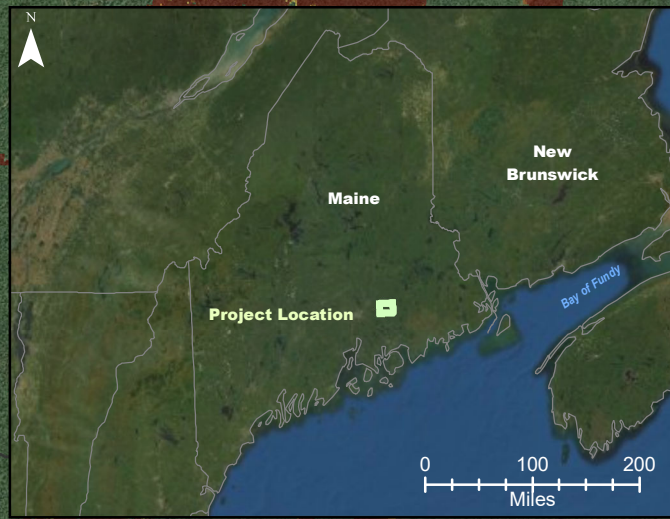
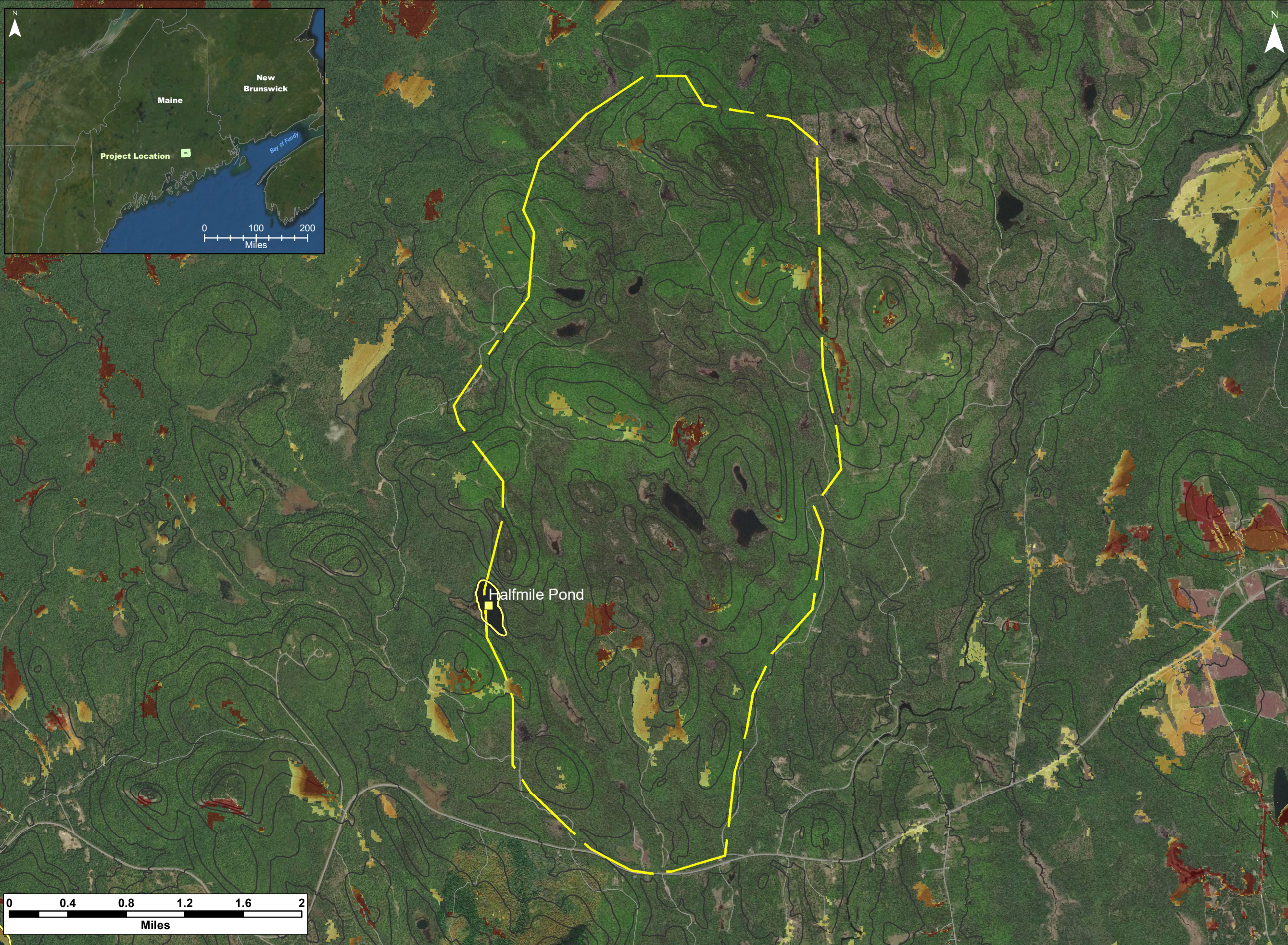
Number of Visible Turbines

1
2
3
4
5
6
7
8
9
10

Cumulative Impacts - Silver Maple Wind Project and Pisgah Mountain Wind Project - Viewshed Bald Bluff (Bare Ground / 117 m & 95 m hub heights)



Date: April 2020	Project #: 19-6780
Scale: 1:40,000	Drawing #: G8
Drawn By: M. Savelle	
Checked By: S. Dickey	



Notes:
 1. Data Sources: Maine Office of GIS, Client
 2. Basemaps: Esri, DigitalGlobe, GeoEye, Earthstar Geographics, CNES/Airbus DS, USDA, USGS, AeroGRID, IGN, and the GIS User Community
 3. Projection: NAD83 UTM Zone 19

Legend:
 ■ SRSNS Scenic Resource of State and National Significance
 — Elevation (100 ft)
 — Roads - NG911
 ■ Conserved Lands Focus Areas

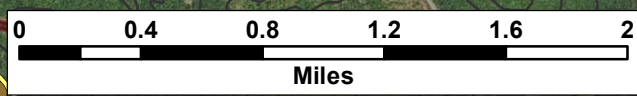
Number of Visible Turbines

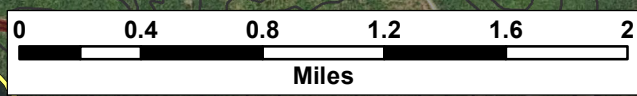
1
2
3
4
5
6
7
8
9
10

Cumulative Impacts - Silver Maple Wind Project and Pisgah Mountain Wind Project - Viewshed Bald Bluff (12 m or 40ft Forest) / 185 m & 145 m total heights)



Date: April 2020	Project #: 19-6780
Scale: 1:40,000	Drawing #: G9
Drawn By: M. Savelle	
Checked By: S. Dickey	





Notes:
 1. Data Sources: Maine Office of GIS, Client
 2. Basemaps: Esri, DigitalGlobe, GeoEye, Earthstar Geographics, CNES/Airbus DS, USDA, USGS, AeroGRID, IGN, and the GIS User Community
 3. Projection: NAD83 UTM Zone 19

Legend:
 ■ Scenic Resource of State and National Significance
 — Elevation (100 ft)
 — Roads - NG911
 ■ Conserved Lands Focus Areas

Number of Visible Turbines

1
2
3
4
5
6
7
8
9
10

Cumulative Impacts - Silver Maple Wind Project and Pisgah Mountain Wind Project - Viewshed Bald Bluff (12 m or 40ft Forest) / 117 m & 95 m hub heights)



Date: April 2020	Project #: 19-6780
Scale: 1:40,000	Drawing #: G10
Drawn By: M. Savelle	
Checked By: S. Dickey	