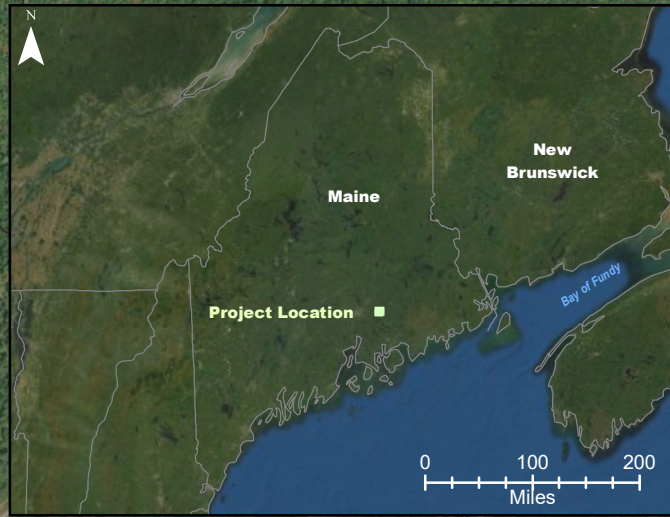


APPENDIX E
PARKS POND



Notes:
 1. Data Sources: Maine Office of GIS, Client
 2. Basemaps: Esri, DigitalGlobe, GeoEye, Earthstar Geographics, CNES/Airbus DS, USDA, USGS, AeroGRID, IGN, and the GIS User Community
 3. Projection: NAD83 UTM Zone 19

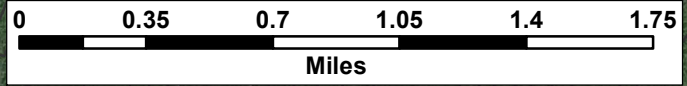
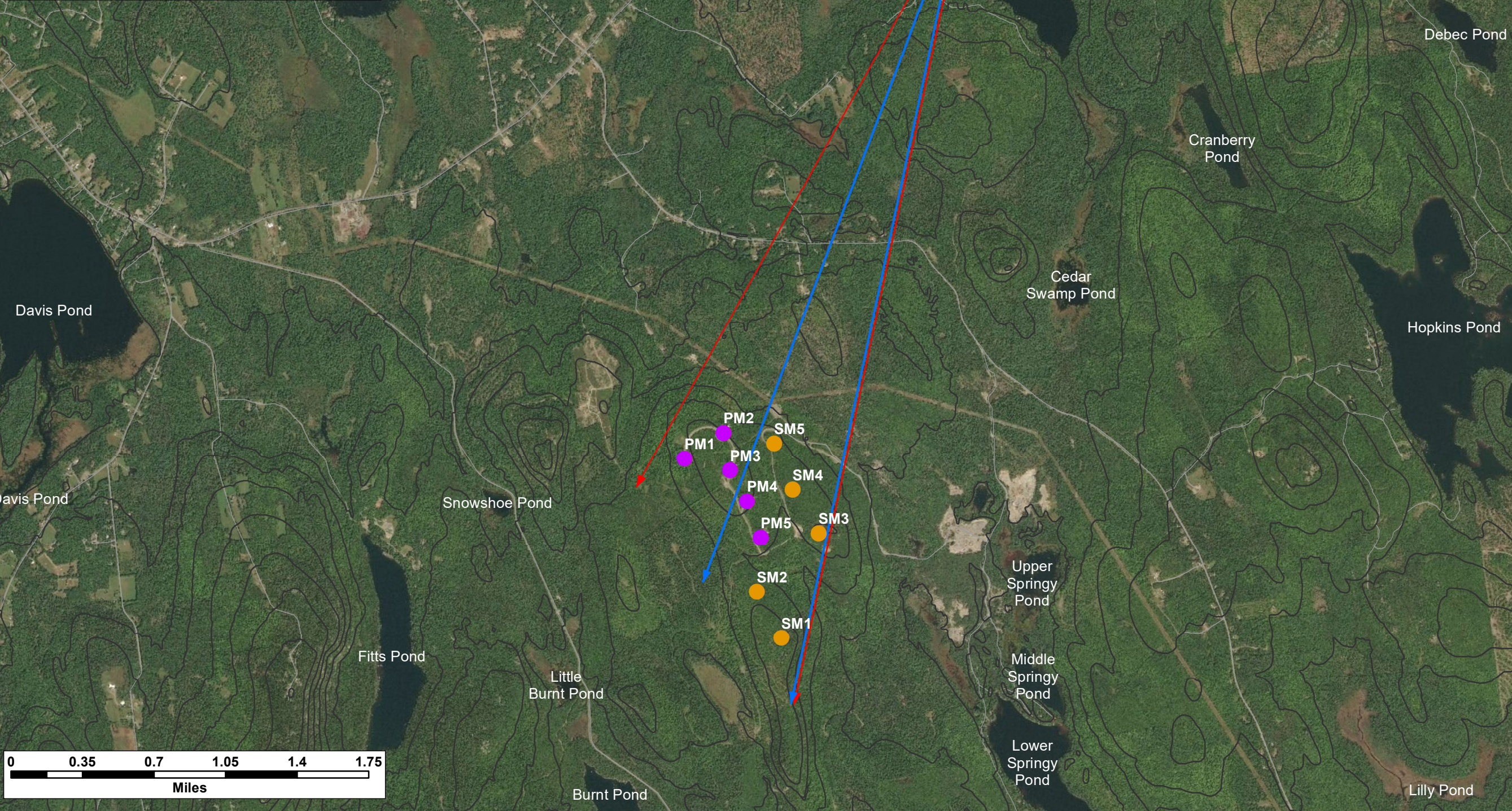
Legend:
 — Elevation (100 ft)
 — Roads - NG911



Silver Maple Wind Project - Parks Pond Existing Character of Surrounding Area



Date: April 2020	Project #: 19-6780
Scale: 1:10,000	Drawing #: E1
Drawn By: M. Savelle	
Checked By: S. Dickey	



Notes:

1. Data Sources: Maine Office of GIS, Client
2. Basemaps: Esri, DigitalGlobe, GeoEye, Earthstar Geographics, CNES/Airbus DS, USDA, USGS, AeroGRID, IGN, and the GIS User Community
3. Projection: NAD83 UTM Zone 19

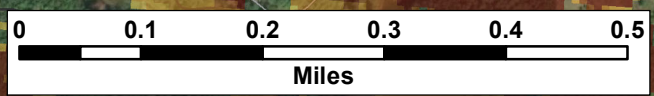
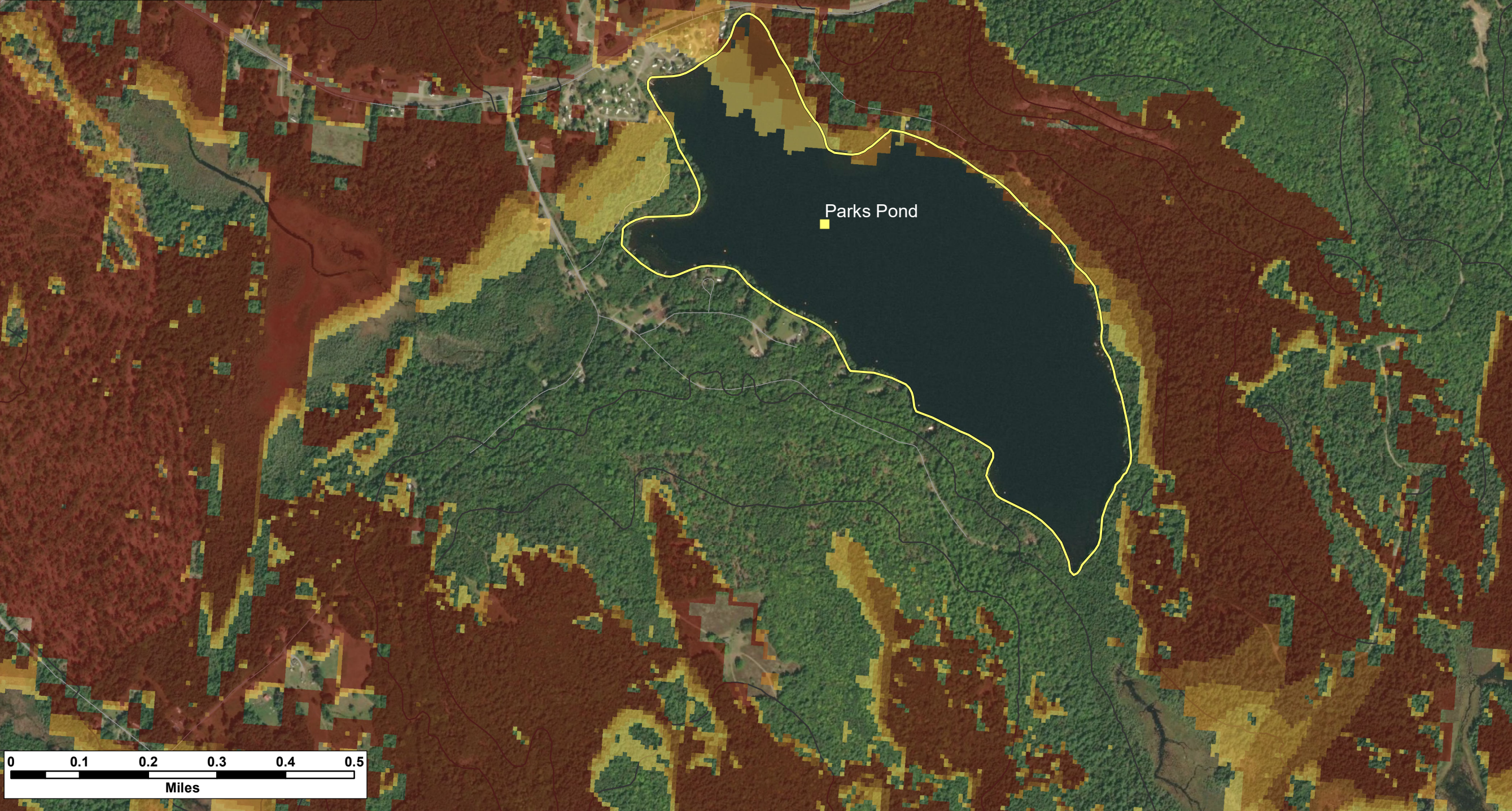
Legend:

- Pisgah Mountain Turbine (Existing)
- Silver Maple Wind Turbine (Proposed)
- Elevation (100 ft)
- Roads - NG911
- High Visual Impact Investigation Area
- ↔ Horizontal View Angle - Silver Maple and Pisgah Mountain Turbines
- ↔ Horizontal View Angle - Silver Maple Turbines

Silver Maple Wind Project - Parks Pond Extent of View



Date:	Project #:
April 2020	19-6780
Scale:	Drawing #:
1:33,590	E2
Drawn By:	
M. Savelle	
Checked By:	
S. Dickey	



Notes:
 1. Data Sources: Maine Office of GIS, Client
 2. Basemaps: Esri, DigitalGlobe, GeoEye, Earthstar Geographics, CNES/Airbus DS, USDA, USGS, AeroGRID, IGN, and the GIS User Community
 3. Projection: NAD83 UTM Zone 19

Legend:

- Scenic Resource of State and National Significance
- SRSNS
- Elevation (100 ft)
- Roads - NG911

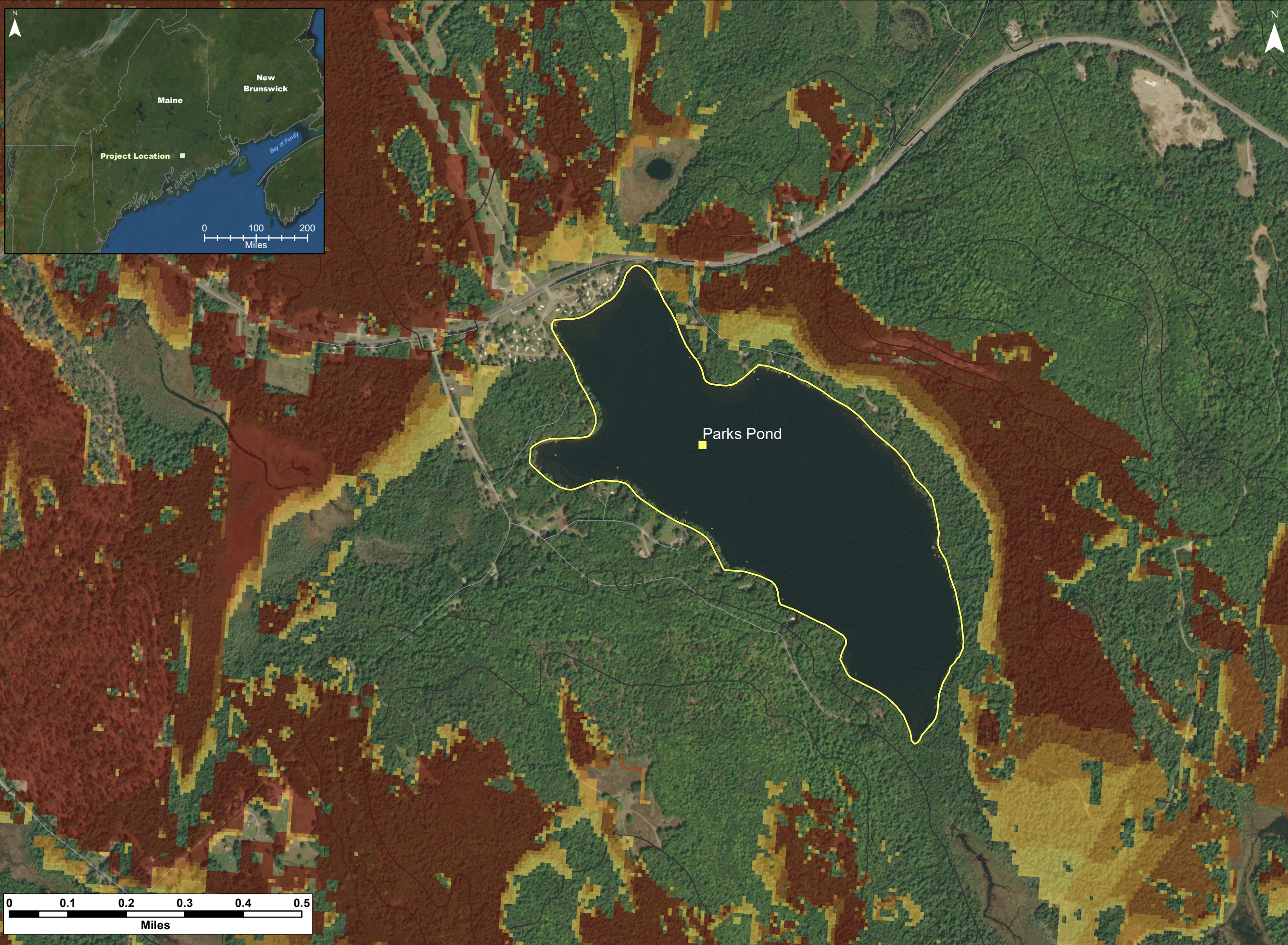
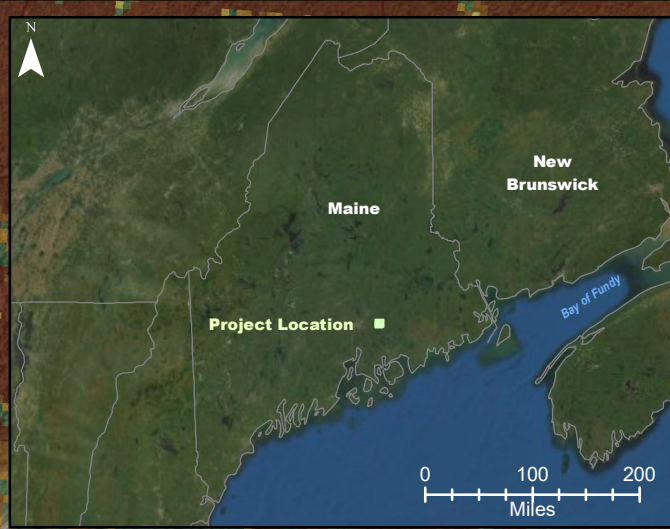
Number of Visible Turbines

- 1
- 2
- 3
- 4
- 5

**Silver Maple Wind Project - Viewshed
 Parks Pond
 (Bare Ground /
 185 m total height)**



Date: April 2020	Project #: 19-6780
Scale: 1:10,000	Drawing #: E3
Drawn By: M. Savelle	
Checked By: S. Dickey	



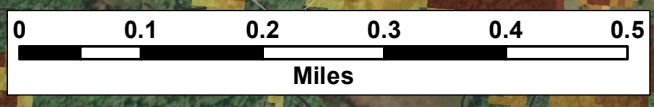
Notes:
 1. Data Sources: Maine Office of GIS, Client
 2. Basemaps: Esri, DigitalGlobe, GeoEye, Earthstar Geographics, CNES/Airbus DS, USDA, USGS, AeroGRID, IGN, and the GIS User Community
 3. Projection: NAD83 UTM Zone 19

Legend:

- SRSNS *Scenic Resource of State and National Significance*
- Elevation (100 ft)
- Roads - NG911

Number of Visible Turbines

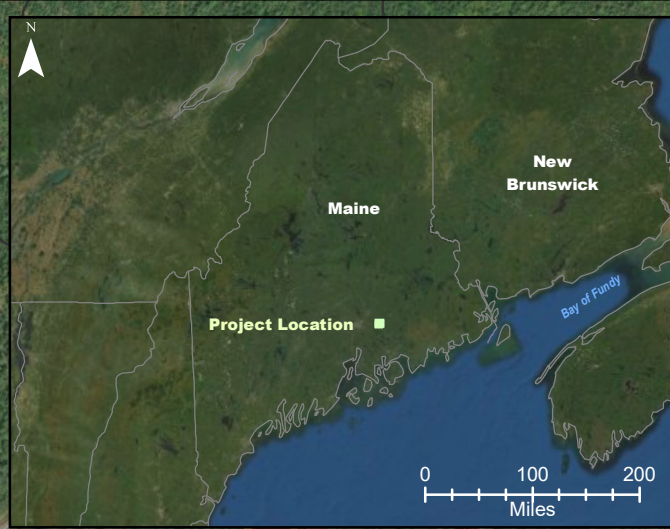
- 1
- 2
- 3
- 4
- 5



Silver Maple Wind Project - Viewshed Parks Pond (Bare Ground / 117 m hub height)

Strum
CONSULTING
Engineering * Surveying * Environmental
Bedford * Antigonish * Moncton * St. John's

Date: April 2020	Project #: 19-6780
Scale: 1:10,000	Drawing #: E4
Drawn By: M. Savelle	
Checked By: S. Dickey	



Notes:
 1. Data Sources: Maine Office of GIS, Client
 2. Basemaps: Esri, DigitalGlobe, GeoEye, Earthstar Geographics, CNES/Airbus DS, USDA, USGS, AeroGRID, IGN, and the GIS User Community
 3. Projection: NAD83 UTM Zone 19

Legend:

Scenic Resource of State and National Significance

■ SRSNS

— Elevation (100 ft)

— Roads - NG911

Number of Visible Turbines

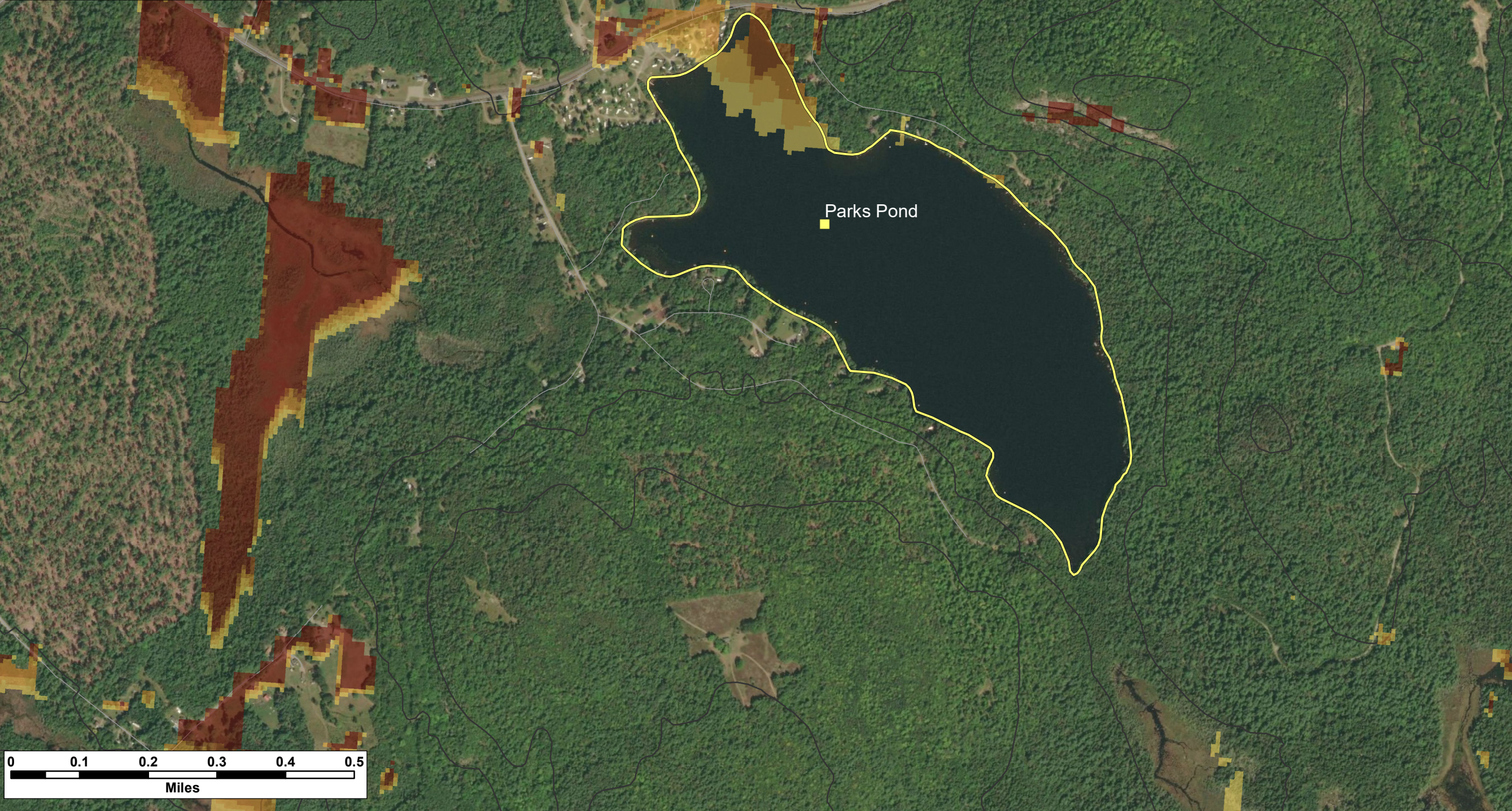
■ 1

■ 2

■ 3

■ 4

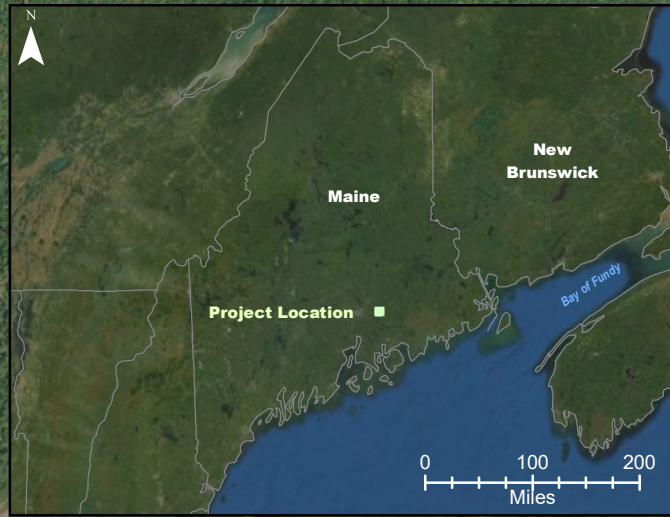
■ 5



Silver Maple Wind Project - Viewshed Parks Pond
 (12 m or 40 ft Forest / 185 m total height)



Date: April 2020	Project #: 19-6780
Scale: 1:10,000	Drawing #: E5
Drawn By: M. Savelle	
Checked By: S. Dickey	



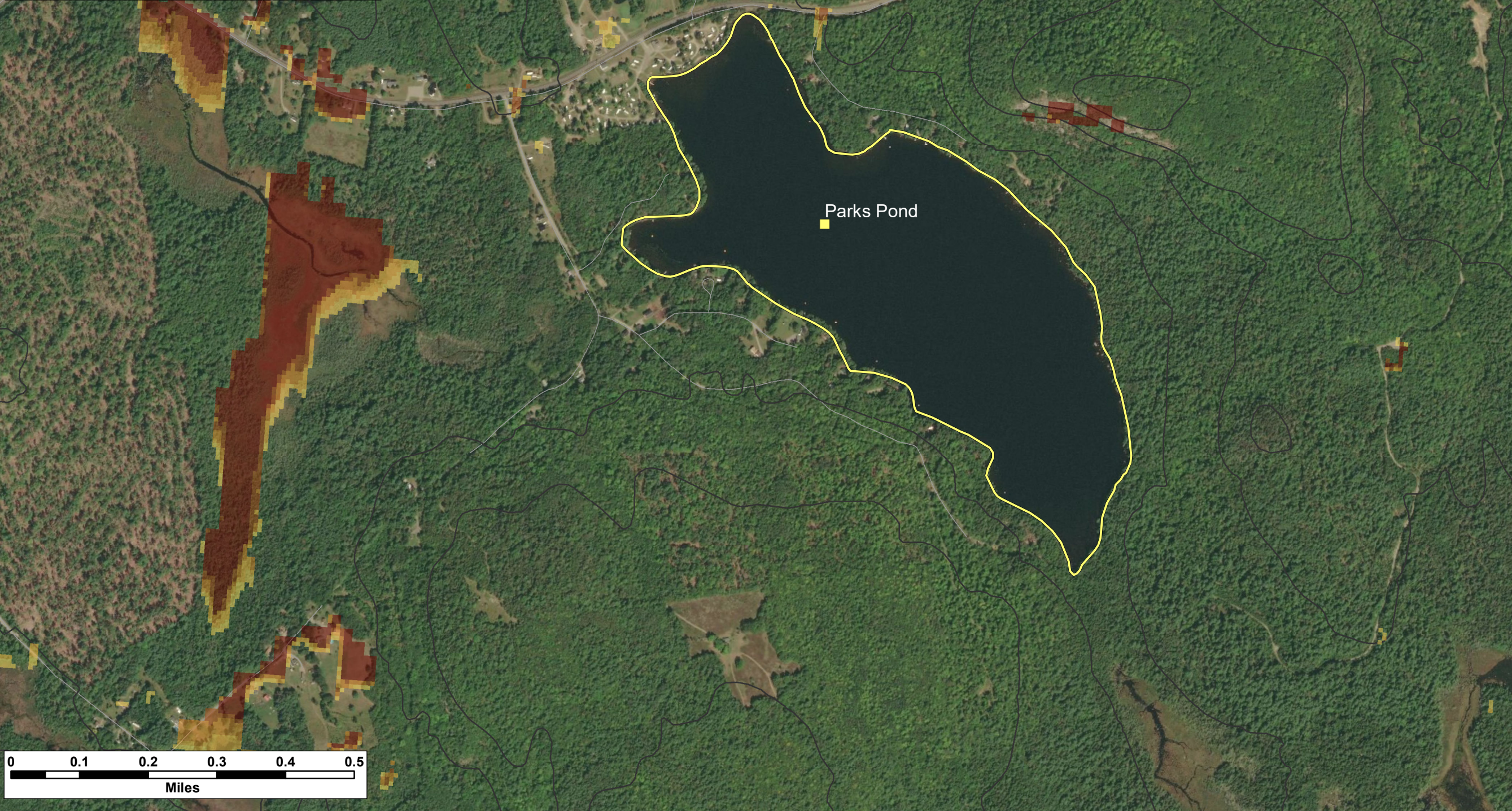
Notes:
 1. Data Sources: Maine Office of GIS, Client
 2. Basemaps: Esri, DigitalGlobe, GeoEye, Earthstar Geographics, CNES/Airbus DS, USDA, USGS, AeroGRID, IGN, and the GIS User Community
 3. Projection: NAD83 UTM Zone 19

Legend:

- SRSNS *Scenic Resource of State and National Significance*
- Elevation (100 ft)
- Roads - NG911

Number of Visible Turbines

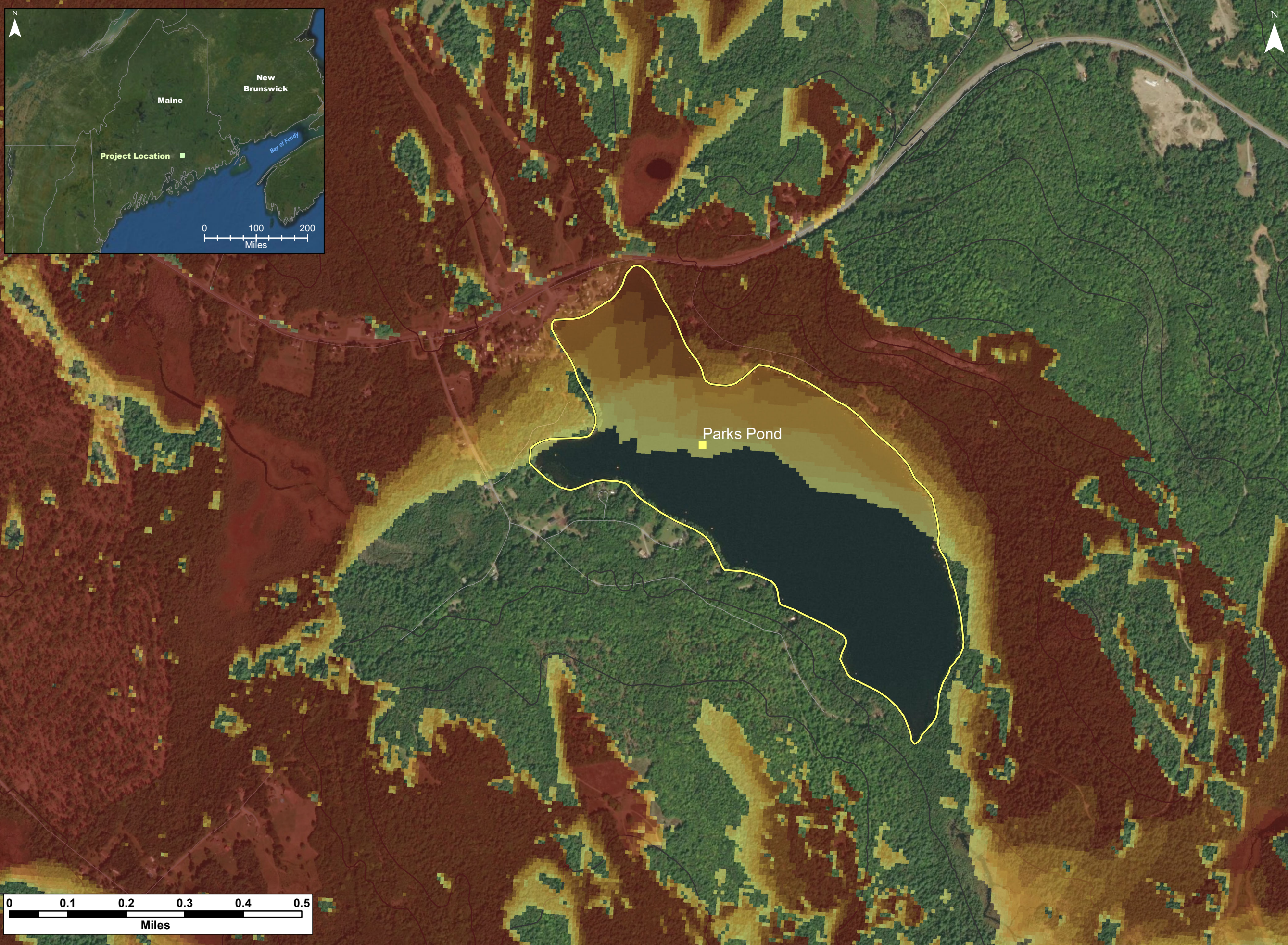
- 1
- 2
- 3
- 4
- 5



Silver Maple Wind Project - Viewshed Parks Pond
 (12 m or 40 ft Forest / 117 m hub height)



Date: April 2020	Project #: 19-6780
Scale: 1:10,000	Drawing #: E6
Drawn By: M. Savelle	
Checked By: S. Dickey	



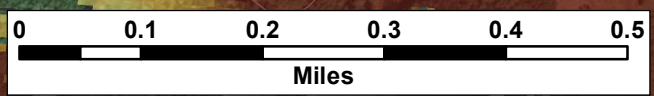
Notes:
 1. Data Sources: Maine Office of GIS, Client
 2. Basemaps: Esri, DigitalGlobe, GeoEye, Earthstar Geographics, CNES/Airbus DS, USDA, USGS, AeroGRID, IGN, and the GIS User Community
 3. Projection: NAD83 UTM Zone 19

Legend:
 ■ SRSNS *Scenic Resource of State and National Significance*
 — Elevation (100 ft)
 — Roads - NG911

Number of Visible Turbines

1
2
3
4
5
6
7
8
9
10

Cumulative Impacts - Silver Maple Wind Project and Pisgah Mountain Wind Project - Viewshed Parks Pond (Bare Ground / 185 m & 145 m total heights)



Date: April 2020	Project #: 19-6780
Scale: 1:10,000	Drawing #: E7
Drawn By: M. Savelle	
Checked By: S. Dickey	



Notes:

1. Data Sources: Maine Office of GIS, Client
2. Basemaps: Esri, DigitalGlobe, GeoEye, Earthstar Geographics, CNES/Airbus DS, USDA, USGS, AeroGRID, IGN, and the GIS User Community
3. Projection: NAD83 UTM Zone 19

Legend:

- Scenic Resource of State and National Significance (SRSNS) - Yellow square
- Elevation (100 ft) - Brown line
- Roads - NG911 - Grey line

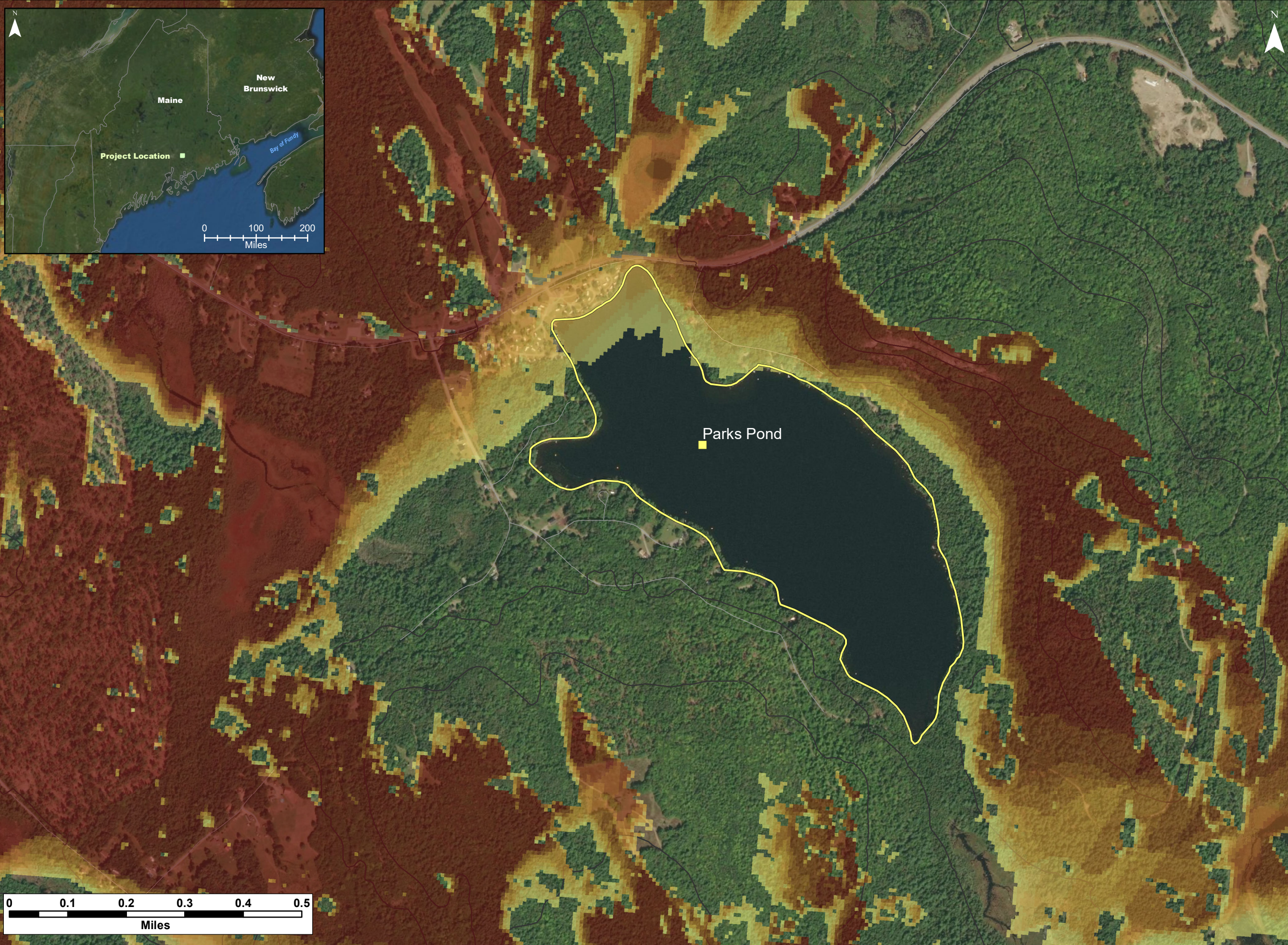
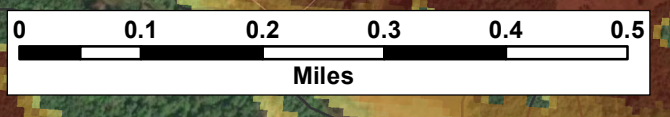
Number of Visible Turbines

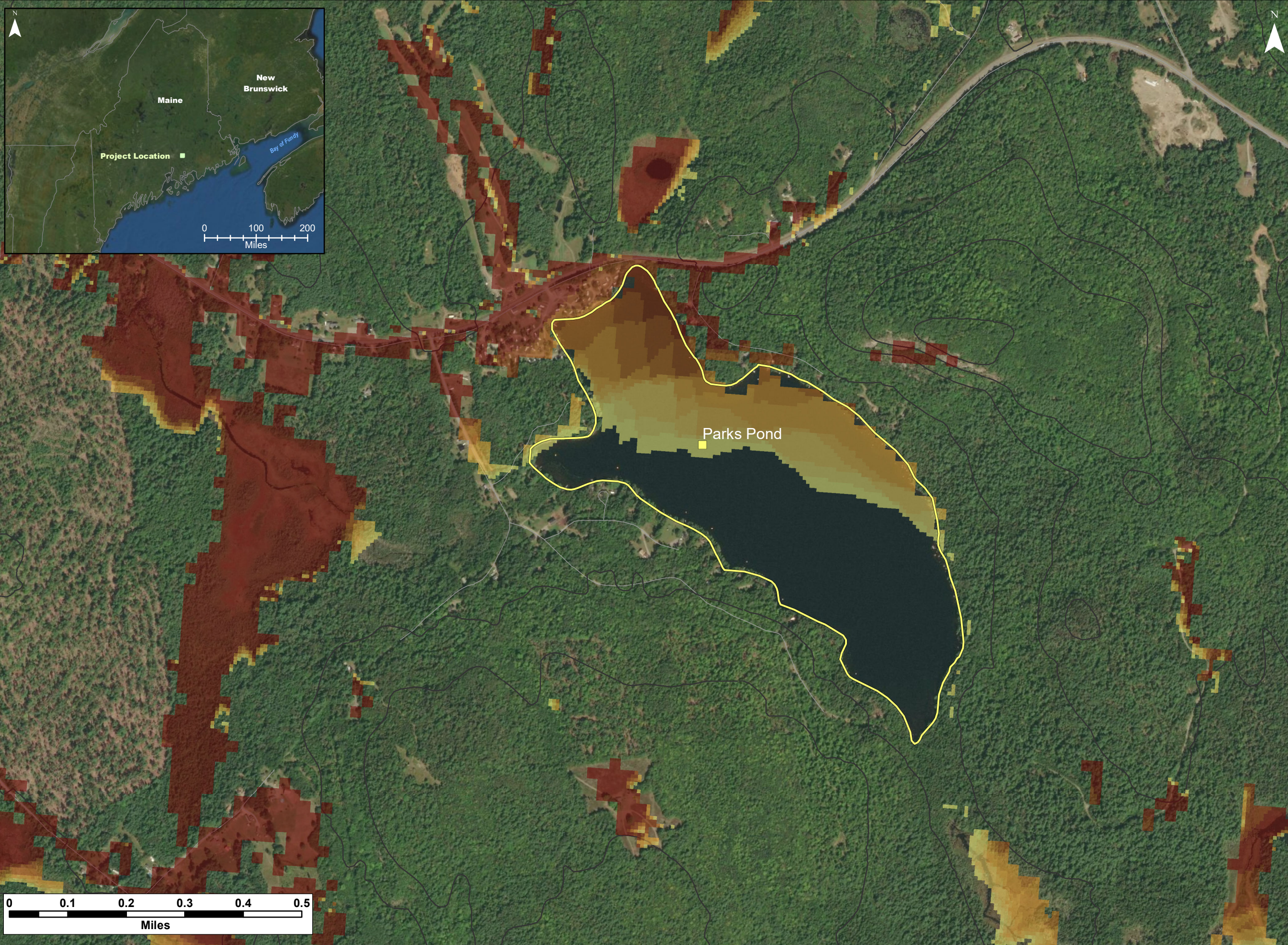
1
2
3
4
5
6
7
8
9
10

Cumulative Impacts - Silver Maple Wind Project and Pisgah Mountain Wind Project - Viewshed Parks Pond (Bare Ground / 185 m & 145 m total heights)



Date: April 2020	Project #: 19-6780
Scale: 1:10,000	Drawing #: E8
Drawn By: M. Savelle	
Checked By: S. Dickey	





Notes:
 1. Data Sources: Maine Office of GIS, Client
 2. Basemaps: Esri, DigitalGlobe, GeoEye, Earthstar Geographics, CNES/Airbus DS, USDA, USGS, AeroGRID, IGN, and the GIS User Community
 3. Projection: NAD83 UTM Zone 19

Legend:
 ■ SRSNS *Scenic Resource of State and National Significance*
 — Elevation (100 ft)
 — Roads - NG911

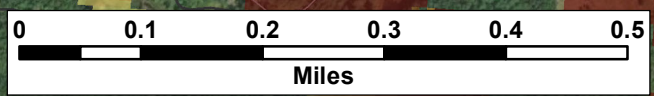
Number of Visible Turbines

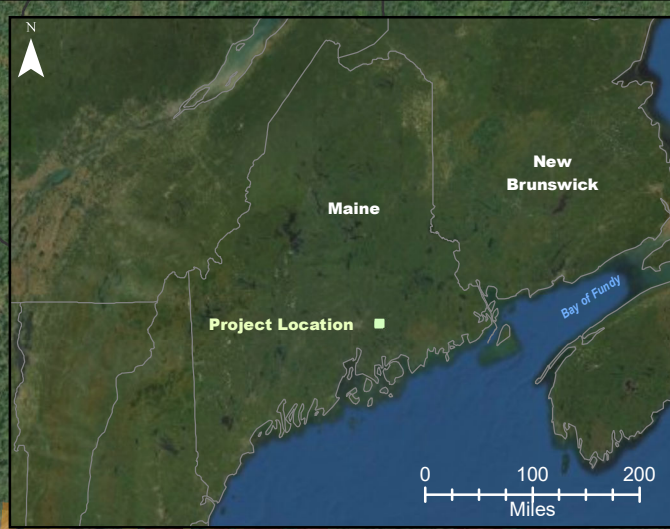
1
2
3
4
5
6
7
8
9
10

Cumulative Impacts - Silver Maple Wind Project and Pisgah Mountain Wind Project - Viewshed Parks Pond (12 m or 40ft Forest) / 185 m & 145 m total heights)



Date: April 2020	Project #: 19-6780
Scale: 1:10,000	Drawing #: E9
Drawn By: M. Savelle	
Checked By: S. Dickey	





Notes:
 1. Data Sources: Maine Office of GIS, Client
 2. Basemaps: Esri, DigitalGlobe, GeoEye, Earthstar Geographics, CNES/Airbus DS, USDA, USGS, AeroGRID, IGN, and the GIS User Community
 3. Projection: NAD83 UTM Zone 19

Legend:
 ■ SRSNS *Scenic Resource of State and National Significance*
 — Elevation (100 ft)
 — Roads - NG911

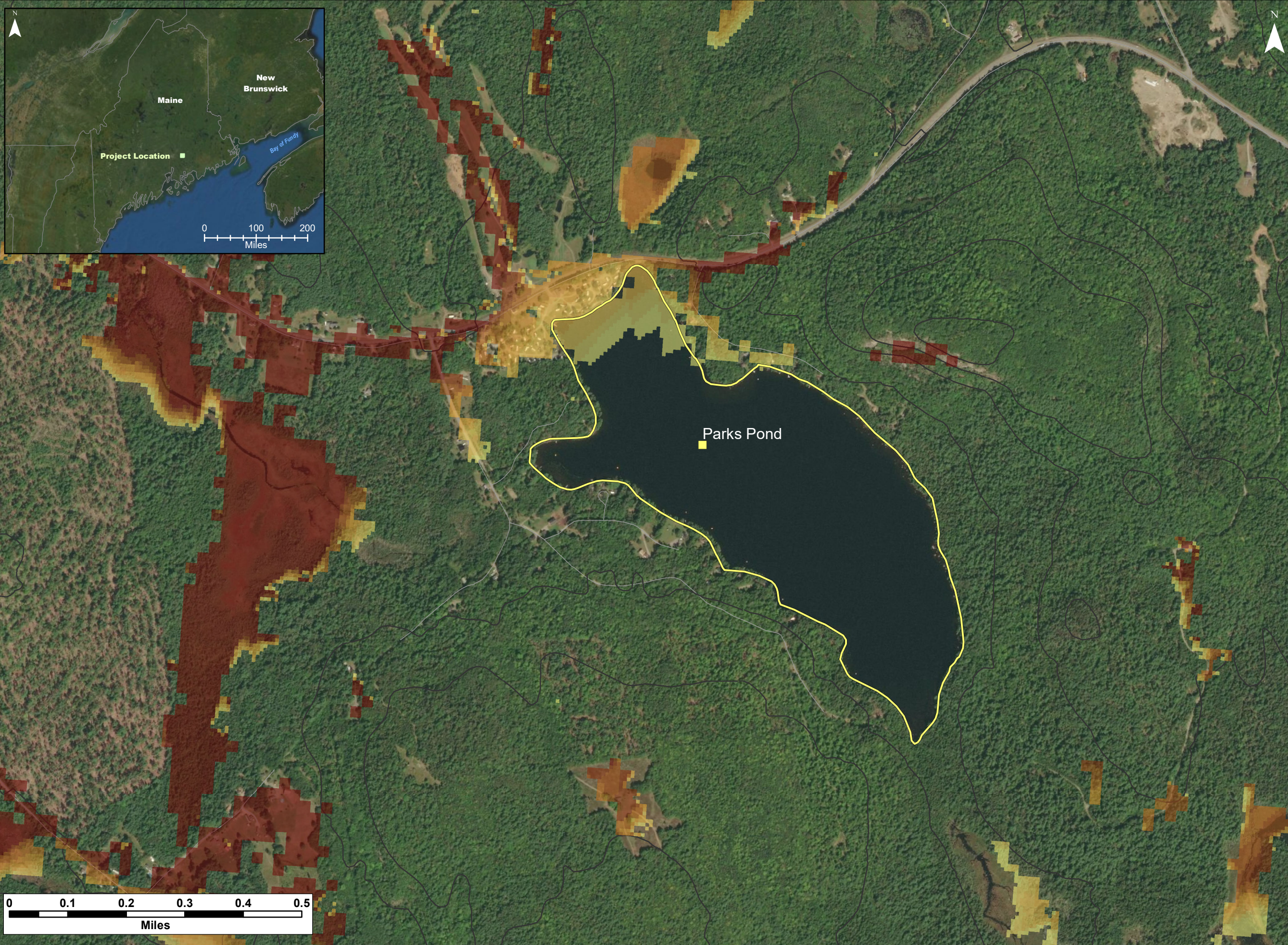
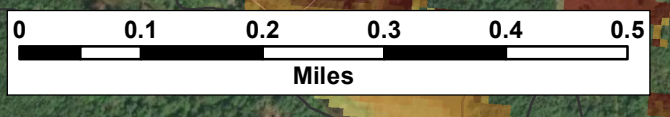
Number of Visible Turbines

1
2
3
4
5
6
7
8
9
10

Cumulative Impacts - Silver Maple Wind Project and Pisgah Mountain Wind Project - Viewshed Parks Pond (12 m or 40ft Forest) / 117 m & 95 m hub heights)



Date: April 2020	Project #: 19-6780
Scale: 1:10,000	Drawing #: E10
Drawn By: M. Savelle	
Checked By: S. Dickey	





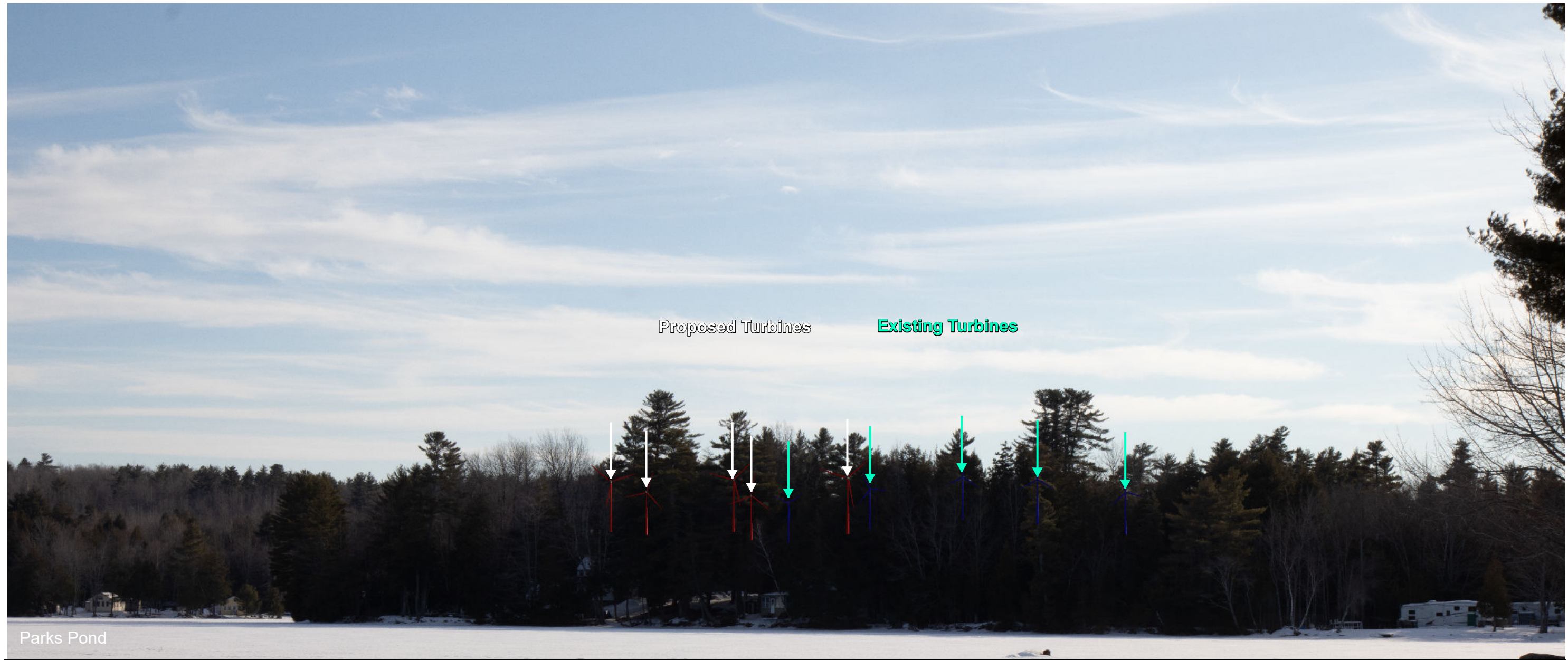
E11a



E11b



E12

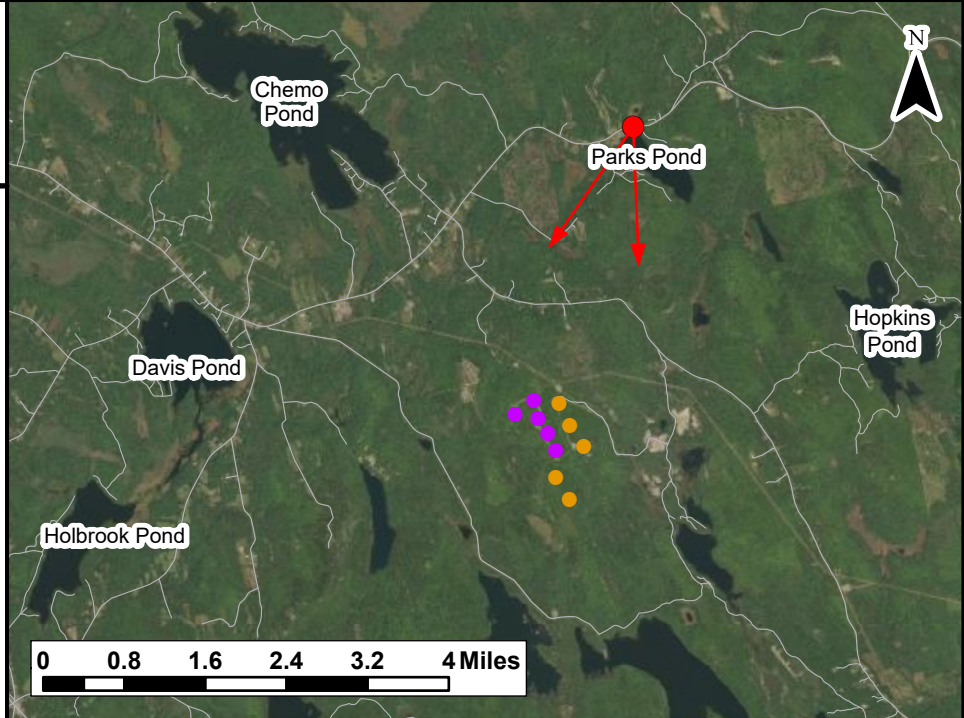


Notes:

1. Data Sources: Maine Office of GIS, Client
2. Basemaps: Esri, DigitalGlobe, GeoEye, Earthstar Geographics, CNES/Airbus DS, USDA, USGS, AeroGRID, IGN, and the GIS User Community
3. Projection: NAD83 UTM Zone 19

Legend:

- Pisgah Mountain Turbine (Existing)
- Silver Maple Wind Turbine (Proposed)
- Roads - NG911
- ↔ Photosimulation Field of View



TECHNICAL INFORMATION

Name of SRSNS:	Parks Pond
View Coordinates:	Latitude: 44° 49' 8.46" Longitude: -68° 30' 13.96" Easting: 539225 m Northing: 4962966 m
Direction of View:	South to Southwest, Heading 205°
Camera Make/ Model:	Canon EOS 800D
Focal Length:	31 mm
Effective Focal Length:	50 mm
Image Resolution:	6000 x 2500
Weather Conditions:	Sunny, Clear Sky
Date of Photo:	2020/02/24
Time of Photo:	15:26
Photo Credit:	CES Inc., Brewer, Maine

*Silver Maple Wind
Project Expansion -
Photosimulation for
Parks Pond*

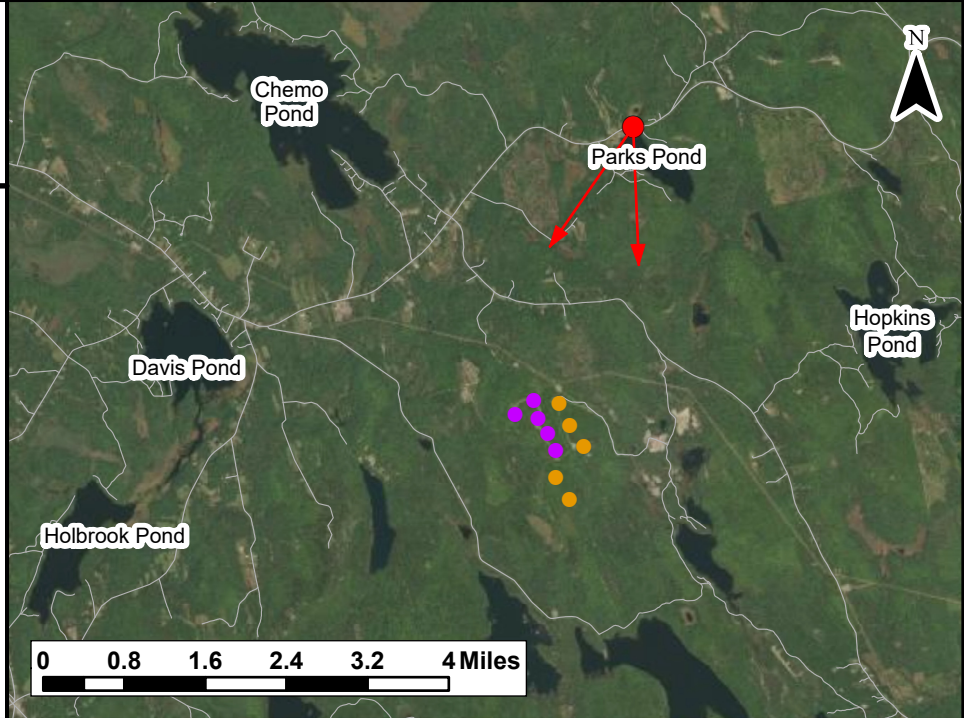


Date:	Project #:
March 2020	19-6780
Scale:	Drawing #:
1:120,000	E13a
Drawn By:	
M. Savelle	
Checked By:	
S. Dickey	



Notes:
 1. Data Sources: Maine Office of GIS, Client
 2. Basemaps: Esri, DigitalGlobe, GeoEye, Earthstar Geographics, CNES/Airbus DS, USDA, USGS, AeroGRID, IGN, and the GIS User Community
 3. Projection: NAD83 UTM Zone 19

Legend:
 ● Pisgah Mountain Turbine (Existing)
 ● Silver Maple Wind Turbine (Proposed)
 — Roads - NG911
 ↔ Photosimulation Field of View



TECHNICAL INFORMATION

Name of SRSNS:	Parks Pond
View Coordinates:	Latitude: 44° 49' 8.46" Longitude: -68° 30' 13.96" Easting: 539225 m Northing: 4962966 m
Direction of View:	South to Southwest, Heading 205°
Camera Make/ Model:	Canon EOS 800D
Focal Length:	31 mm
Effective Focal Length:	50 mm
Image Resolution:	6000 x 2500
Weather Conditions:	Sunny, Clear Sky
Date of Photo:	2020/02/24
Time of Photo:	15:26
Photo Credit:	CES Inc., Brewer, Maine

Silver Maple Wind Project Expansion - Photosimulation for Parks Pond



Date:	Project #:
March 2020	19-6780
Scale:	Drawing #:
1:120,000	E13b
Drawn By:	Checked By:
M. Savelle	S. Dickey



E14