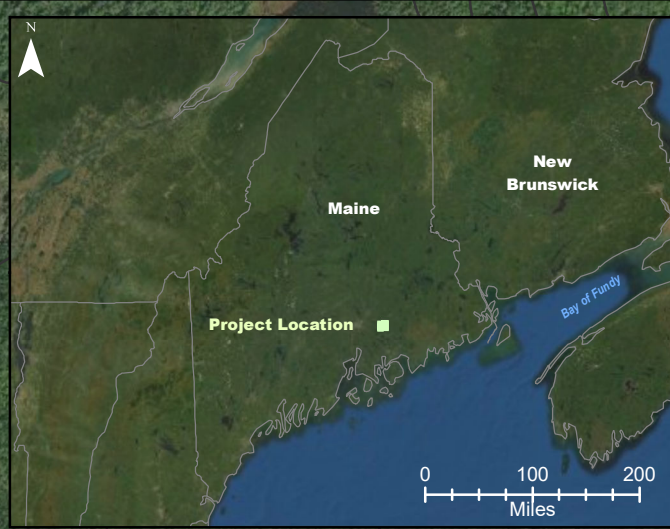


APPENDIX C
HOPKINS POND

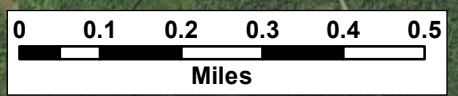


Notes:

1. Data Sources: Maine Office of GIS, Client
2. Basemaps: Esri, DigitalGlobe, GeoEye, Earthstar Geographics, CNES/Airbus DS, USDA, USGS, AeroGRID, IGN, and the GIS User Community
3. Projection: NAD83 UTM Zone 19

Legend:

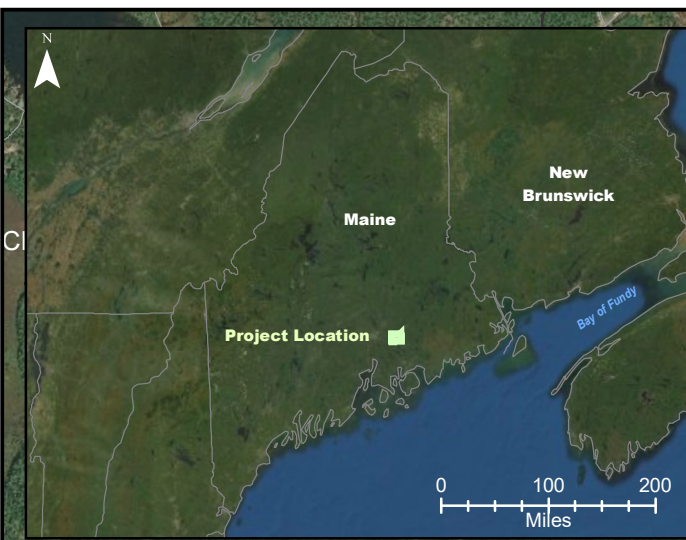
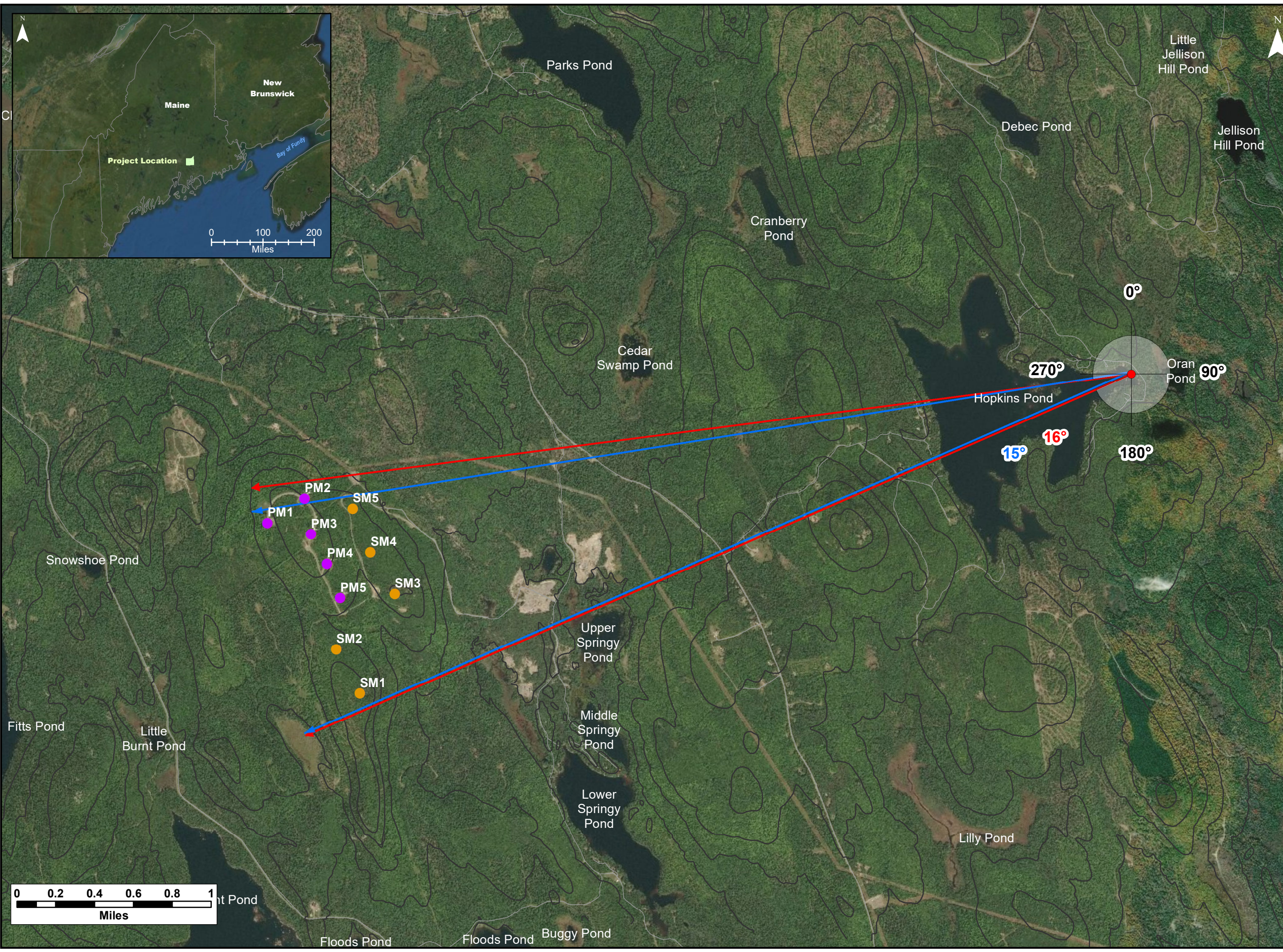
- Elevation (100 ft)
- Roads - NG911



Silver Maple Wind Project - Hopkins Existing Character of Surrounding Area



Date: April 2020	Project #: 19-6780
Scale: 1:15,000	Drawing #: C1
Drawn By: M. Savelle	
Checked By: S. Dickey	



Notes:

1. Data Sources: Maine Office of GIS, Client
2. Basemaps: Esri, DigitalGlobe, GeoEye, Earthstar Geographics, CNES/Airbus DS, USDA, USGS, AeroGRID, IGN, and the GIS User Community
3. Projection: NAD83 UTM Zone 19

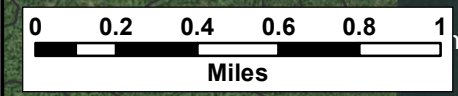
Legend:

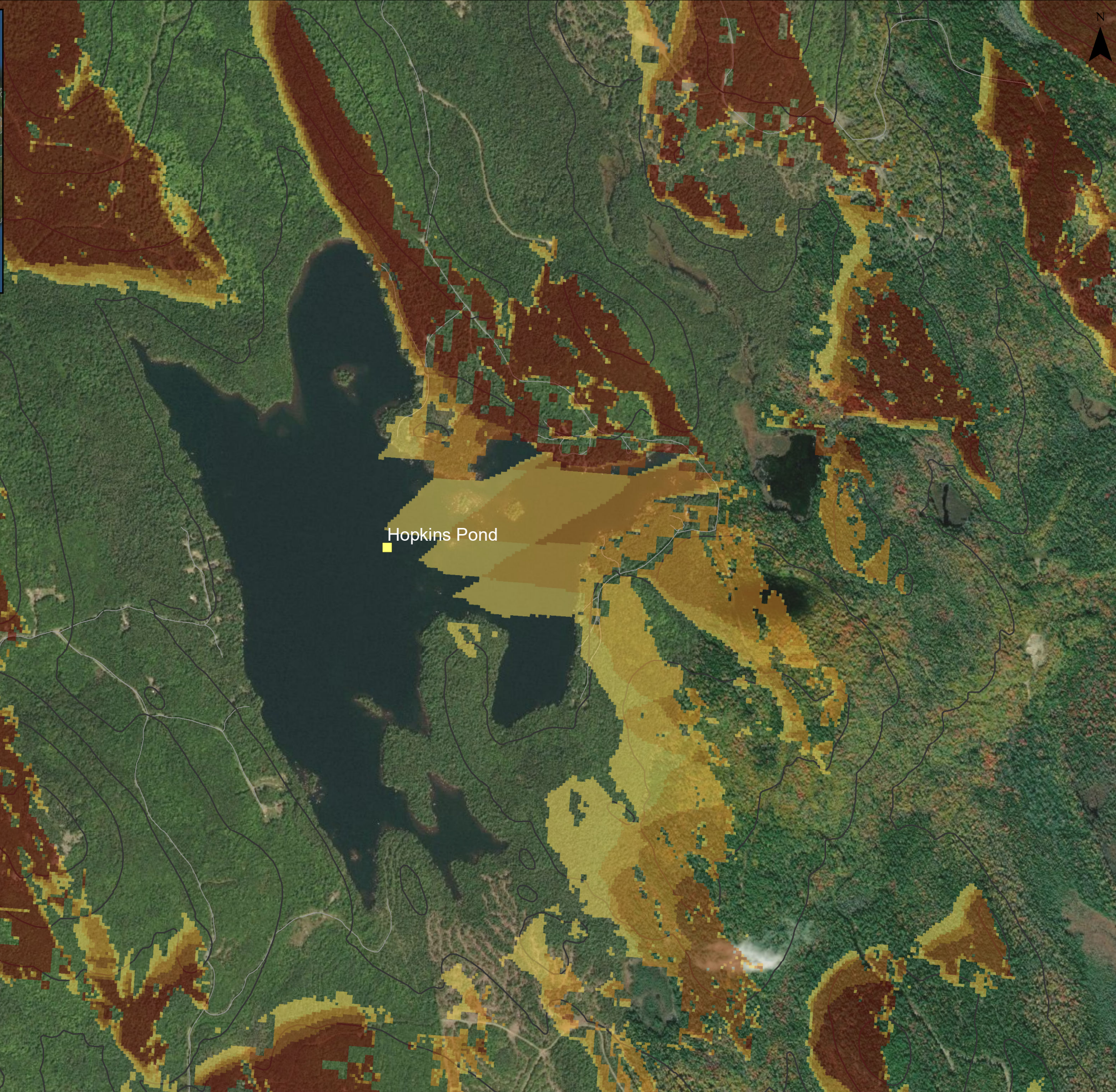
- Pisgah Mountain Turbine (Existing)
- Silver Maple Wind Turbine (Proposed)
- Elevation (100 ft)
- Roads - NG911
- High Visual Impact Investigation Area
- ↔ Horizontal View Angle - Silver Maple and Pisgah Mountain Turbines
- ↔ Horizontal View Angle - Silver Maple Turbines

Silver Maple Wind Project - Hopkins Pond Extent of View



Date: April 2020	Project #: 19-6780
Scale: 1:30,000	Drawing #: C2
Drawn By: M. Savelle	
Checked By: S. Dickey	





Notes:
 1. Data Sources: Maine Office of GIS, Client
 2. Basemaps: Esri, DigitalGlobe, GeoEye, Earthstar Geographics, CNES/Airbus DS, USDA, USGS, AeroGRID, IGN, and the GIS User Community
 3. Projection: NAD83 UTM Zone 19

Legend:

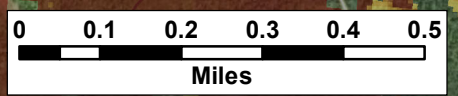
Scenic Resource of State and National Significance
 SRSNS

Elevation (100 ft)

Roads - NG911

Number of Visible Turbines

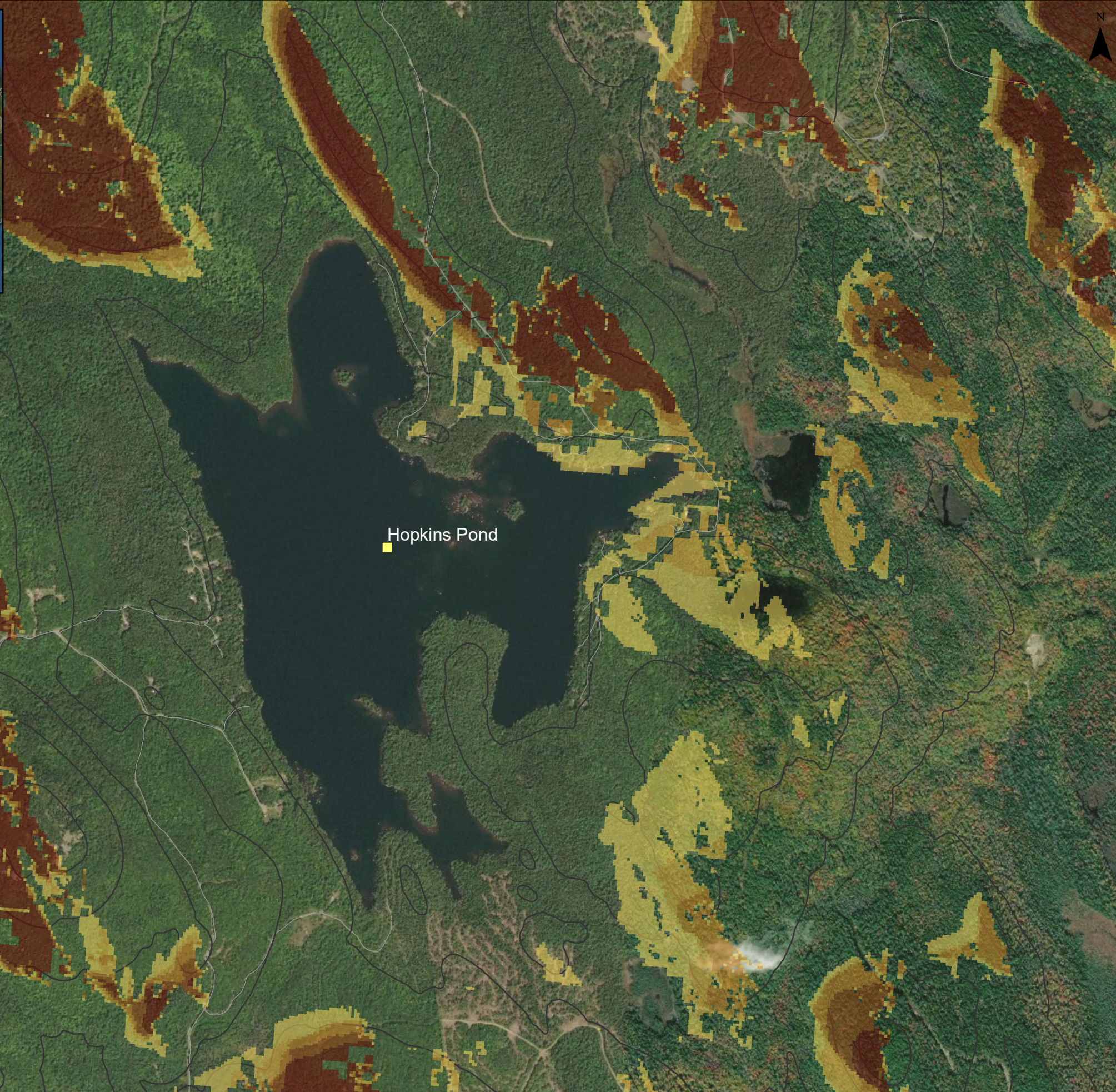
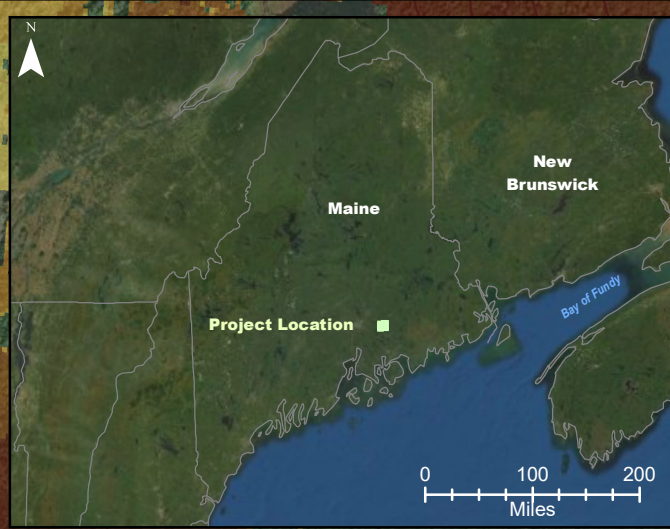
- 1
- 2
- 3
- 4
- 5



Silver Maple Wind Project - Viewshed Hopkins Pond (Bare Ground / 185 m total height)



Date: April 2020	Project #: 19-6780
Scale: 1:15,000	Drawing #: C3
Drawn By: M. Savelle	
Checked By: S. Dickey	



Notes:
 1. Data Sources: Maine Office of GIS, Client
 2. Basemaps: Esri, DigitalGlobe, GeoEye, Earthstar Geographics, CNES/Airbus DS, USDA, USGS, AeroGRID, IGN, and the GIS User Community
 3. Projection: NAD83 UTM Zone 19

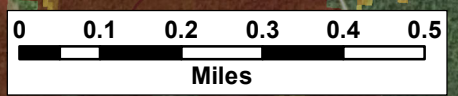
Legend:
 Scenic Resource of State and National Significance
 SRSNS
 Elevation (100 ft)
 Roads - NG911

Number of Visible Turbines

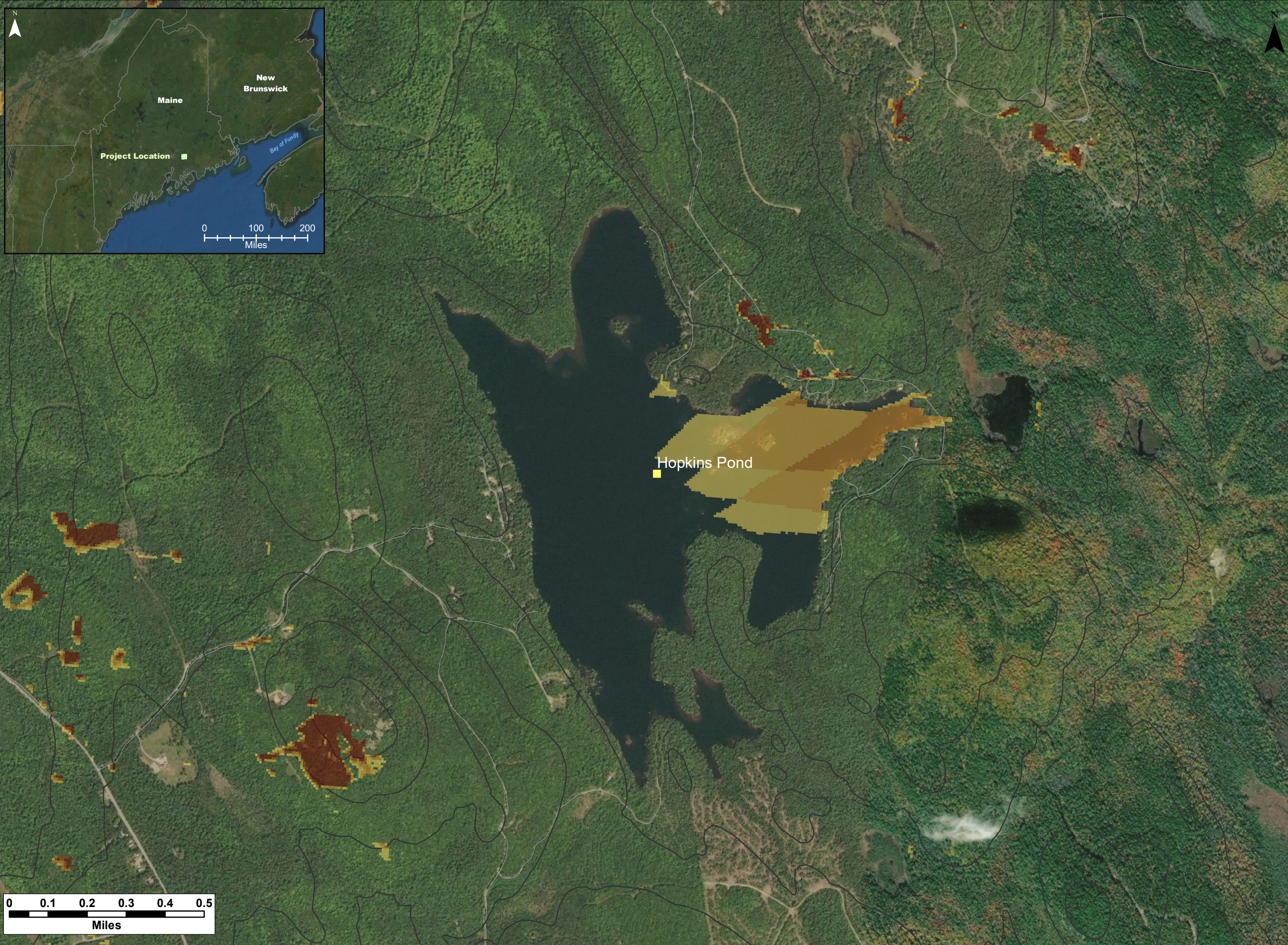
1
2
3
4
5



Silver Maple Wind Project - Viewsshed Hopkins Pond (Bare Ground / 117 m hub height)



Date: April 2020	Project #: 19-6780
Scale: 1:15,000	Drawing #: C4
Drawn By: M. Savelle	
Checked By: S. Dickey	



Notes:
 1. Data Sources: Maine Office of GIS, Client
 2. Basemaps: Esri, DigitalGlobe, GeoEye, Earthstar Geographics, CNES/Airbus DS, USDA, USGS, AeroGRID, IGN, and the GIS User Community
 3. Projection: NAD83 UTM Zone 19

Legend:

Scenic Resource of State and National Significance

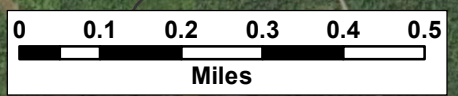
■ SRSNS

— Elevation (100 ft)

— Roads - NG911

Number of Visible Turbines

1
2
3
4
5



Silver Maple Wind Project - Viewshed Hopkins Pond
 (12 m or 40 ft Forest / 185 m total height)



Date: April 2020	Project #: 19-6780
Scale: 1:15,000	Drawing #: C5
Drawn By: M. Savelle	
Checked By: S. Dickey	



Notes:
 1. Data Sources: Maine Office of GIS, Client
 2. Basemaps: Esri, DigitalGlobe, GeoEye, Earthstar Geographics, CNES/Airbus DS, USDA, USGS, AeroGRID, IGN, and the GIS User Community
 3. Projection: NAD83 UTM Zone 19

Legend:

Scenic Resource of State and National Significance

■ SRSNS

— Elevation (100 ft)

— Roads - NG911

Number of Visible Turbines

1
 2
 3
 4
 5

Project Location

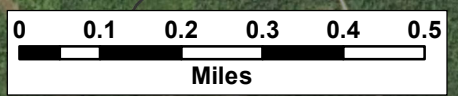
Maine
 New Brunswick
 Bay of Fundy

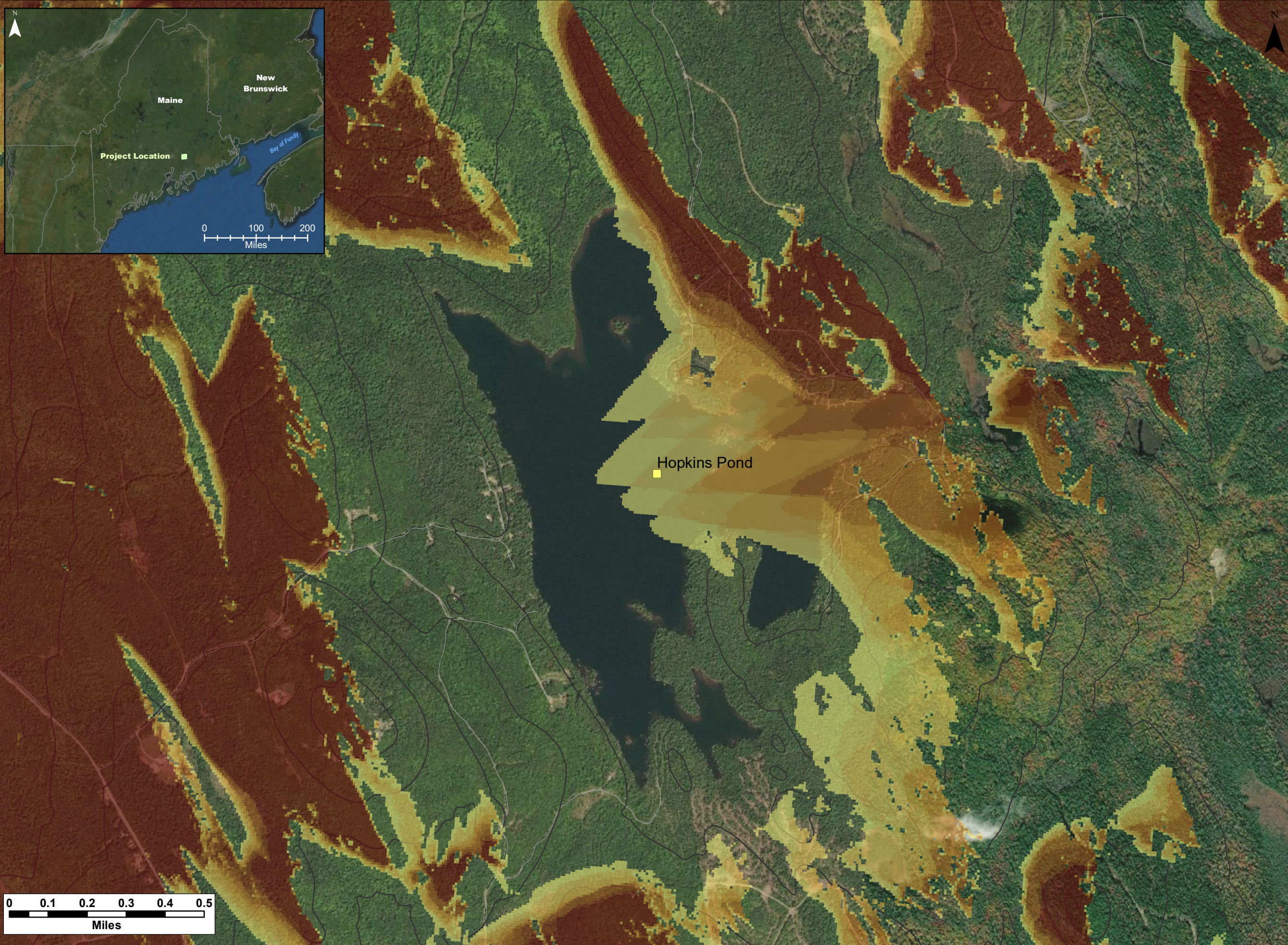
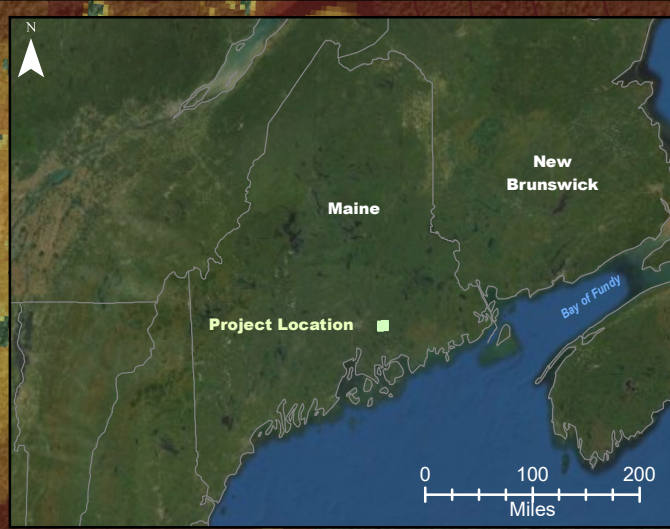
0 100 200
 Miles

Silver Maple Wind Project - Viewshed Hopkins Pond
 (12 m or 40 ft Forest / 117 m hub height)



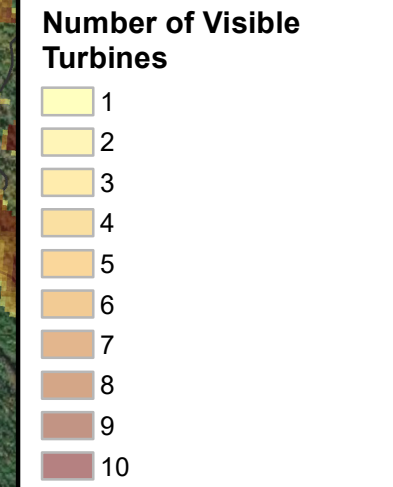
Date: April 2020	Project #: 19-6780
Scale: 1:15,000	Drawing #: C6
Drawn By: M. Savelle	
Checked By: S. Dickey	



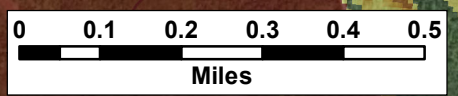


Notes:
 1. Data Sources: Maine Office of GIS, Client
 2. Basemaps: Esri, DigitalGlobe, GeoEye, Earthstar Geographics, CNES/Airbus DS, USDA, USGS, AeroGRID, IGN, and the GIS User Community
 3. Projection: NAD83 UTM Zone 19

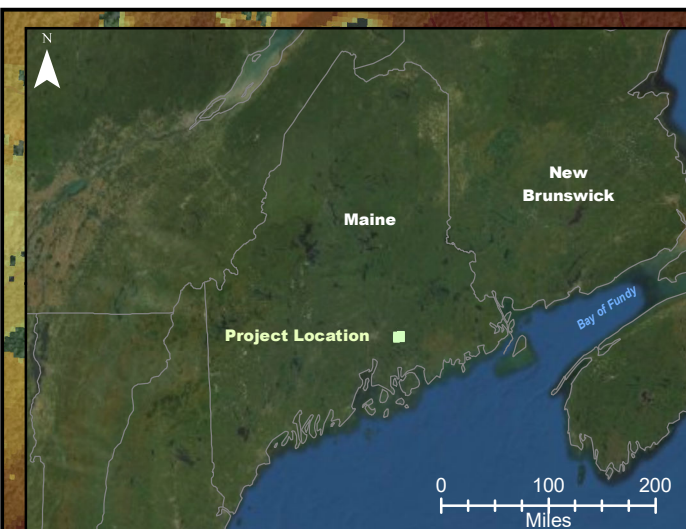
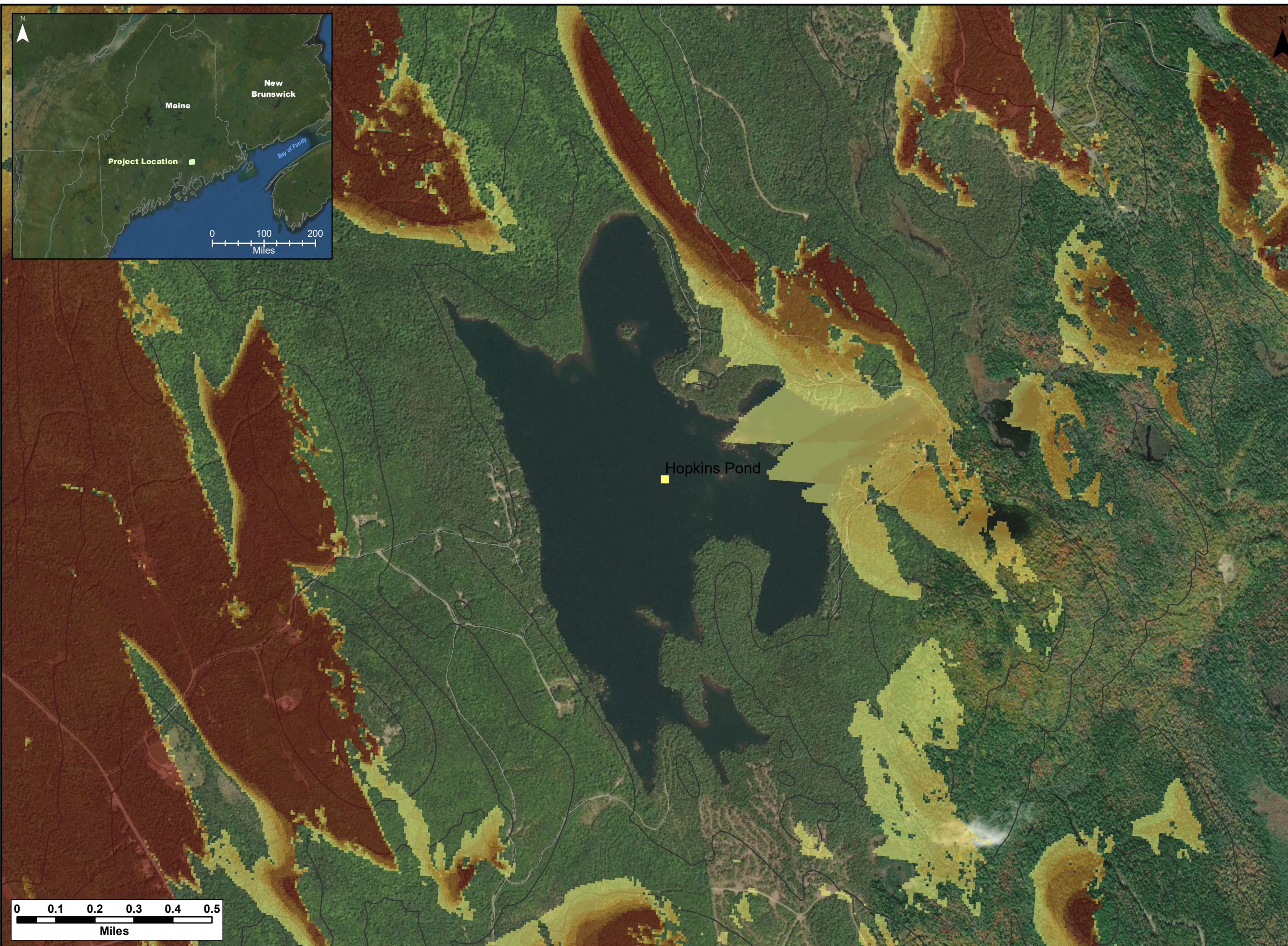
Legend:
 Scenic Resource of State and National Significance
 SRSNS
 Elevation (100 ft)
 Roads - NG911



Cumulative Impacts - Silver Maple Wind Project and Pisgah Mountain Wind Project - Viewshed Hopkins Pond (Bare Ground / 185 m & 145 m total heights)



Date: April 2020	Project #: 19-6780
Scale: 1:15,000	Drawing #: C7
Drawn By: M. Savelle	
Checked By: S. Dickey	



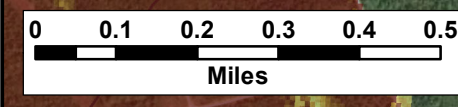
Notes:
 1. Data Sources: Maine Office of GIS, Client
 2. Basemaps: Esri, DigitalGlobe, GeoEye, Earthstar Geographics, CNES/Airbus DS, USDA, USGS, AeroGRID, IGN, and the GIS User Community
 3. Projection: NAD83 UTM Zone 19

Legend:
 SRSNS *Scenic Resource of State and National Significance*
 — Elevation (100 ft)
 — Roads - NG911

Number of Visible Turbines

1
2
3
4
5
6
7
8
9
10

Cumulative Impacts - Silver Maple Wind Project and Pisgah Mountain Wind Project - Viewshed Hopkins Pond (Bare Ground / 117 m & 95 m hub heights)



Date: April 2020	Project #: 19-6780
Scale: 1:15,000	Drawing #: C8
Drawn By: M. Savelle	
Checked By: S. Dickey	



Notes:
 1. Data Sources: Maine Office of GIS, Client
 2. Basemaps: Esri, DigitalGlobe, GeoEye, Earthstar Geographics, CNES/Airbus DS, USDA, USGS, AeroGRID, IGN, and the GIS User Community
 3. Projection: NAD83 UTM Zone 19

Legend:

Scenic Resource of State and National Significance

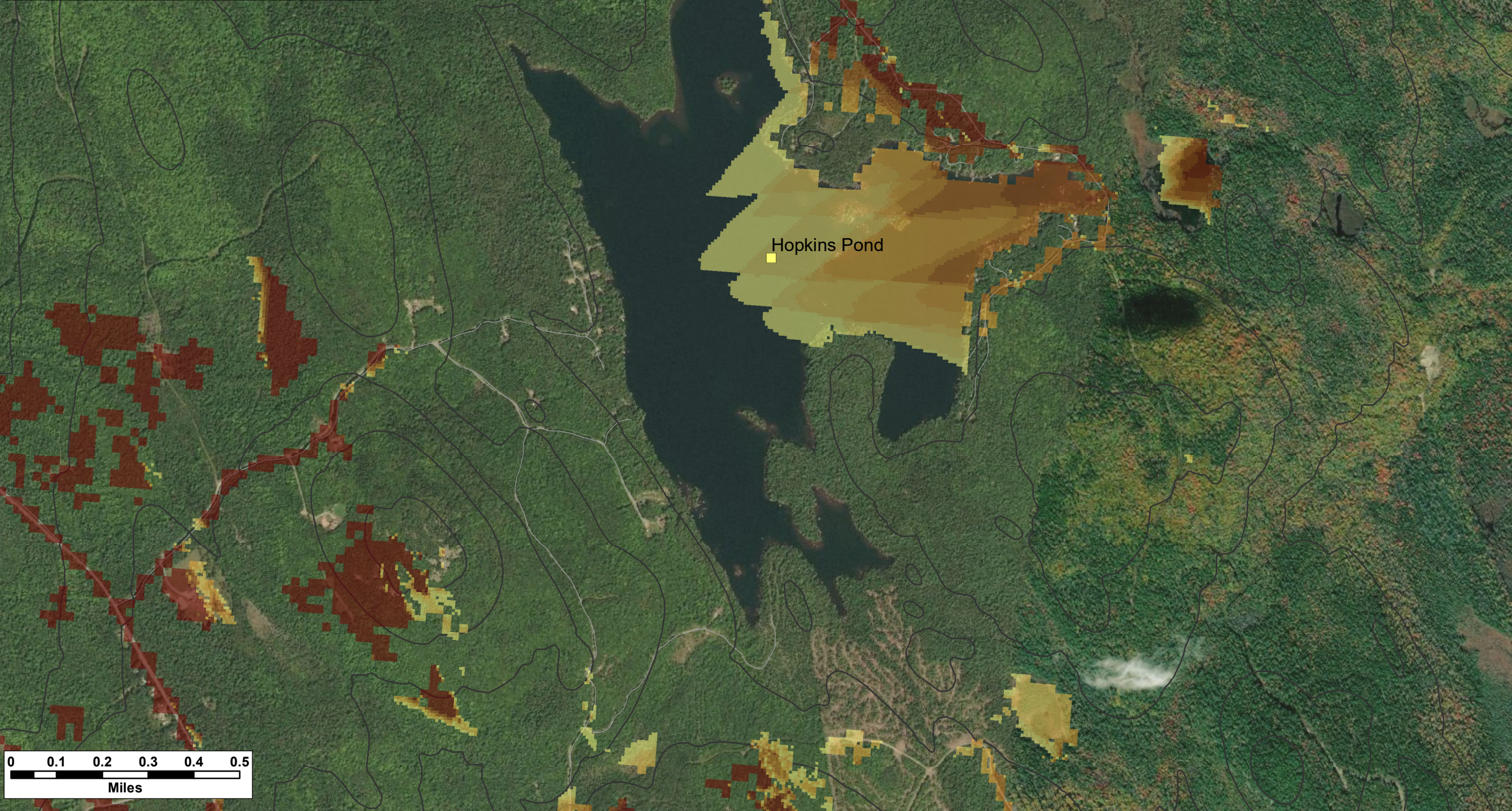
■ SRSNS

— Elevation (100 ft)

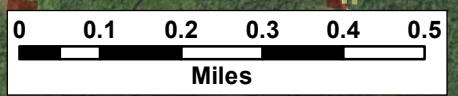
— Roads - NG911

Number of Visible Turbines

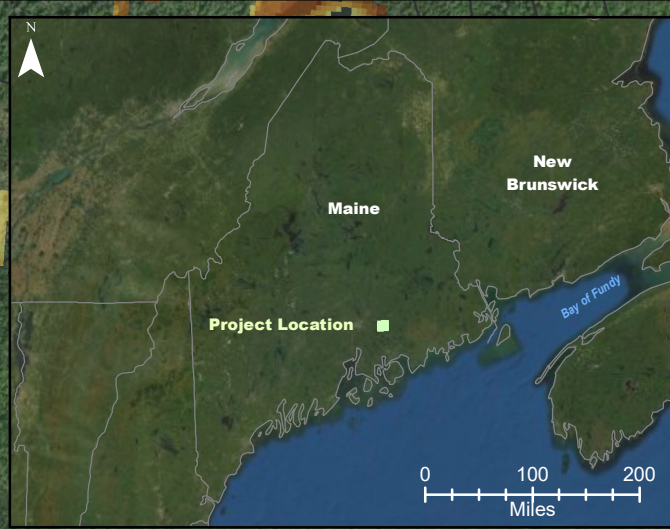
1
2
3
4
5
6
7
8
9
10



Cumulative Impacts - Silver Maple Wind Project and Pisgah Mountain Wind Project - Viewshed Hopkins Pond (12 m or 40ft Forest) / 185 m & 145 m total heights)

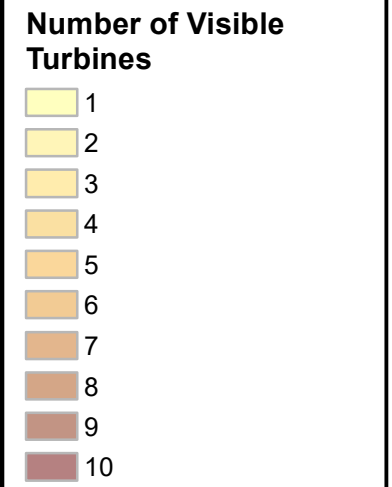


Date: April 2020	Project #: 19-6780
Scale: 1:15,000	Drawing #: C9
Drawn By: M. Savelle	
Checked By: S. Dickey	



Notes:
 1. Data Sources: Maine Office of GIS, Client
 2. Basemaps: Esri, DigitalGlobe, GeoEye, Earthstar Geographics, CNES/Airbus DS, USDA, USGS, AeroGRID, IGN, and the GIS User Community
 3. Projection: NAD83 UTM Zone 19

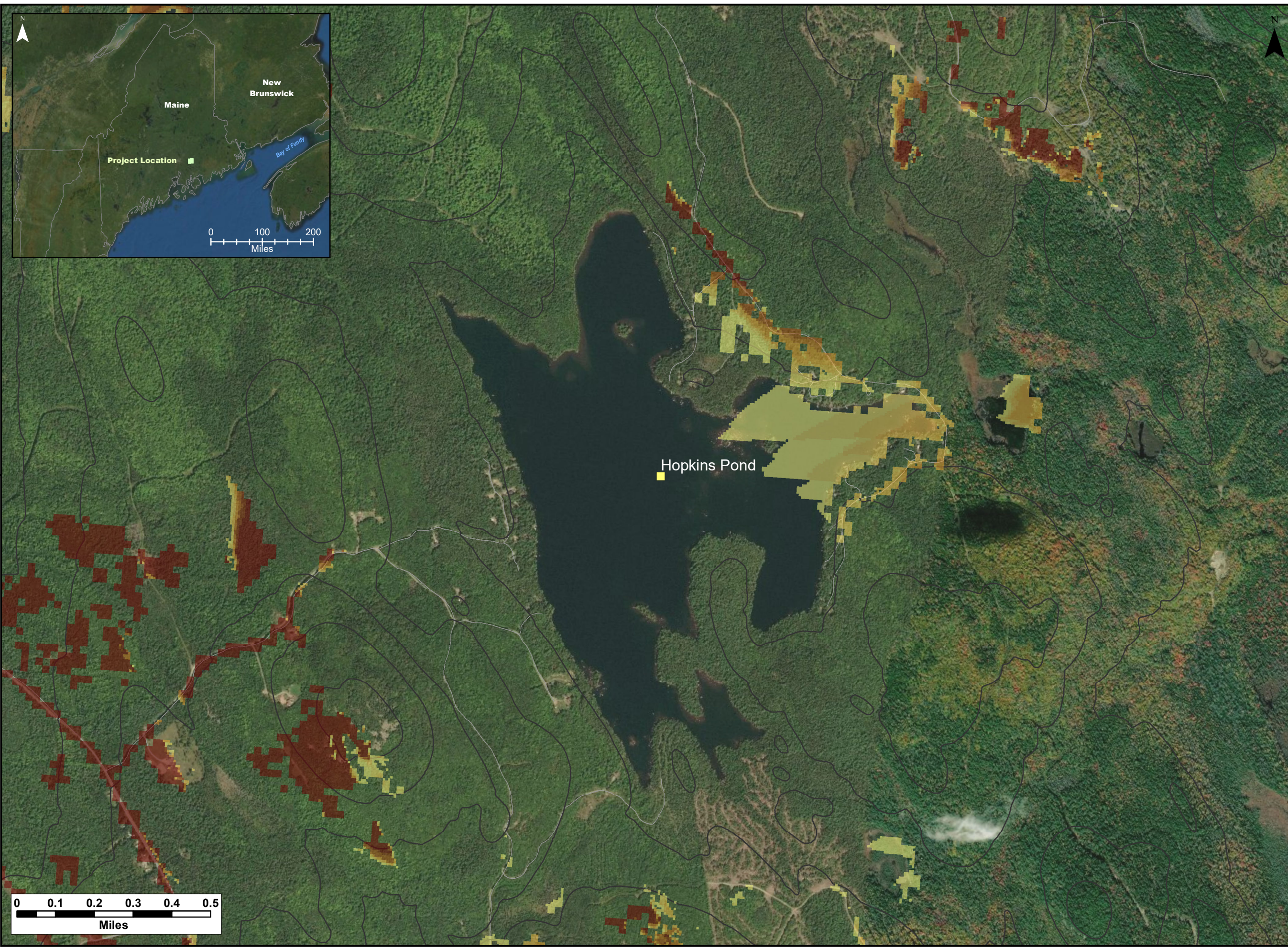
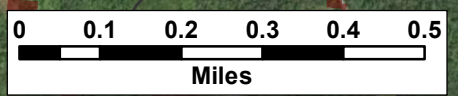
Legend:
 Scenic Resource of State and National Significance
 SRSNS
 Elevation (100 ft)
 Roads - NG911



Cumulative Impacts - Silver Maple Wind Project and Pisgah Mountain Wind Project - Viewshed Hopkins Pond (12 m or 40ft Forest) / 117 m & 95 m hub heights)



Date: April 2020	Project #: 19-6780
Scale: 1:15,000	Drawing #: C10
Drawn By: M. Savelle	
Checked By: S. Dickey	





C11



C12



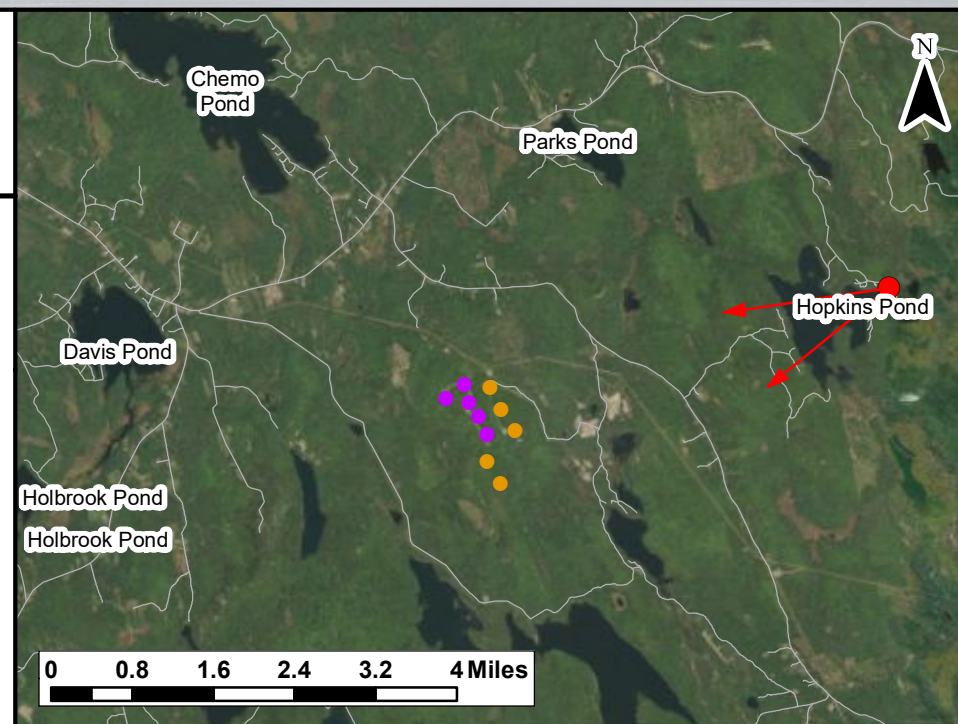
Hopkins Pond

Notes:

1. Data Sources: Maine Office of GIS, Client
2. Basemaps: Esri, DigitalGlobe, GeoEye, Earthstar Geographics, CNES/Airbus DS, USDA, USGS, AeroGRID, IGN, and the GIS User Community
3. Projection: NAD83 UTM Zone 19

Legend:

- Pisgah Mountain Turbine (Existing)
- Silver Maple Wind Turbine (Proposed)
- Roads - NG911
- Photosimulation Field of View



TECHNICAL INFORMATION

Name of SRSNS:	Hopkins Pond
View Coordinates:	Latitude: 44° 47' 36" Longitude: -68° 26' 20" Easting: 544383 m Northing: 4960146 m
Direction of View:	Southwest, Heading 254°
Camera Make/ Model:	Canon EOS 800D
Focal Length:	28 mm
Effective Focal Length:	50 mm
Image Resolution:	6000 x 2500
Weather Conditions:	Sunny, Clear Sky
Date of Photo:	2020/03/11
Time of Photo:	12:57
Photo Credit:	CES Inc., Brewer, Maine

*Silver Maple Wind
Project Expansion -
Photosimulation for
Hopkins Pond*

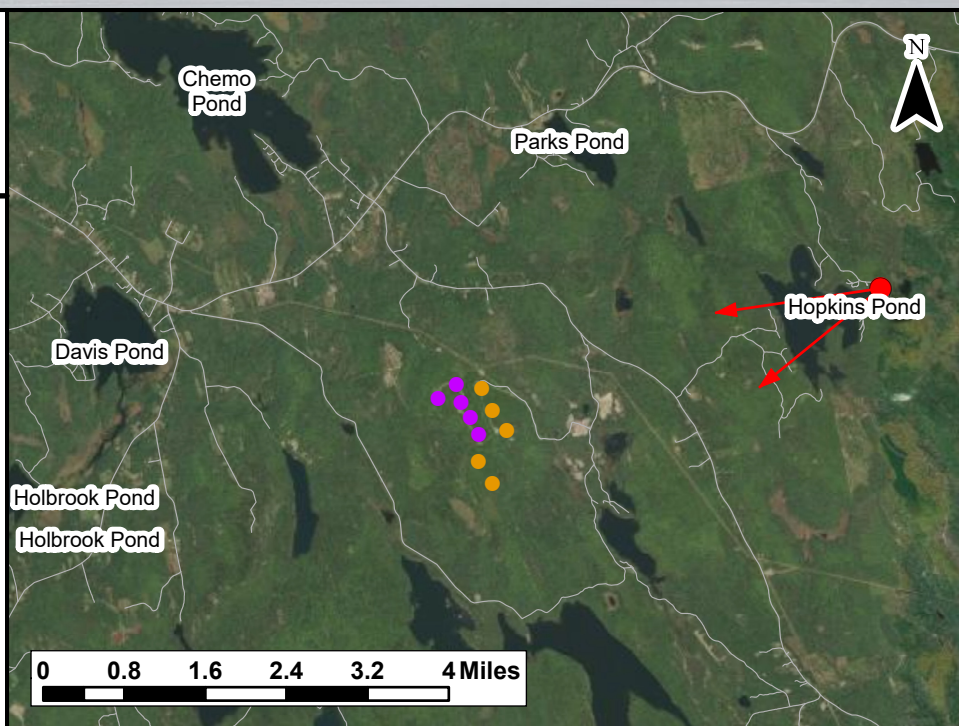


Date: March 2020	Project #: 19-6780
Scale: 1:120,000	Drawing #: C13a
Drawn By: M. Savelle	
Checked By: S. Dickey	



Notes:
 1. Data Sources: Maine Office of GIS, Client
 2. Basemaps: Esri, DigitalGlobe, GeoEye, Earthstar Geographics, CNES/Airbus DS, USDA, USGS, AeroGRID, IGN, and the GIS User Community
 3. Projection: NAD83 UTM Zone 19

Legend:
 ● Pispah Mountain Turbine (Existing)
 ● Silver Maple Wind Turbine (Proposed)
 — Roads - NG911
 ↔ Photosimulation Field of View



TECHNICAL INFORMATION

Name of SRSNS:	Hopkins Pond
View Coordinates:	Latitude: 44° 47' 36" Longitude: -68° 26' 20" Easting: 544383 m Northing: 4960146 m
Direction of View:	Southwest, Heading 254°
Camera Make/ Model:	Canon EOS 800D
Focal Length:	28 mm
Effective Focal Length:	50 mm
Image Resolution:	6000 x 2500
Weather Conditions:	Sunny, Clear Sky
Date of Photo:	2020/03/11
Time of Photo:	12:57
Photo Credit:	CES Inc., Brewer, Maine

Silver Maple Wind Project Expansion - Photosimulation for Hopkins Pond



Date:	Project #:
March 2020	19-6780
Scale:	Drawing #:
1:120,000	C13b
Drawn By:	
M. Savelle	
Checked By:	
S. Dickey	



C14