

APPENDIX B  
CHEMO POND DRAWINGS

---



**Notes:**

1. Data Sources: Maine Office of GIS, Client
2. Basemaps: Esri, DigitalGlobe, GeoEye, Earthstar Geographics, CNES/Airbus DS, USDA, USGS, AeroGRID, IGN, and the GIS User Community
3. Projection: NAD83 UTM Zone 19

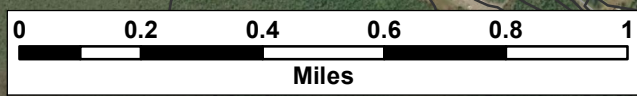
**Legend:**

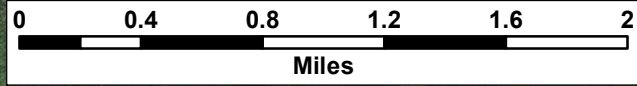
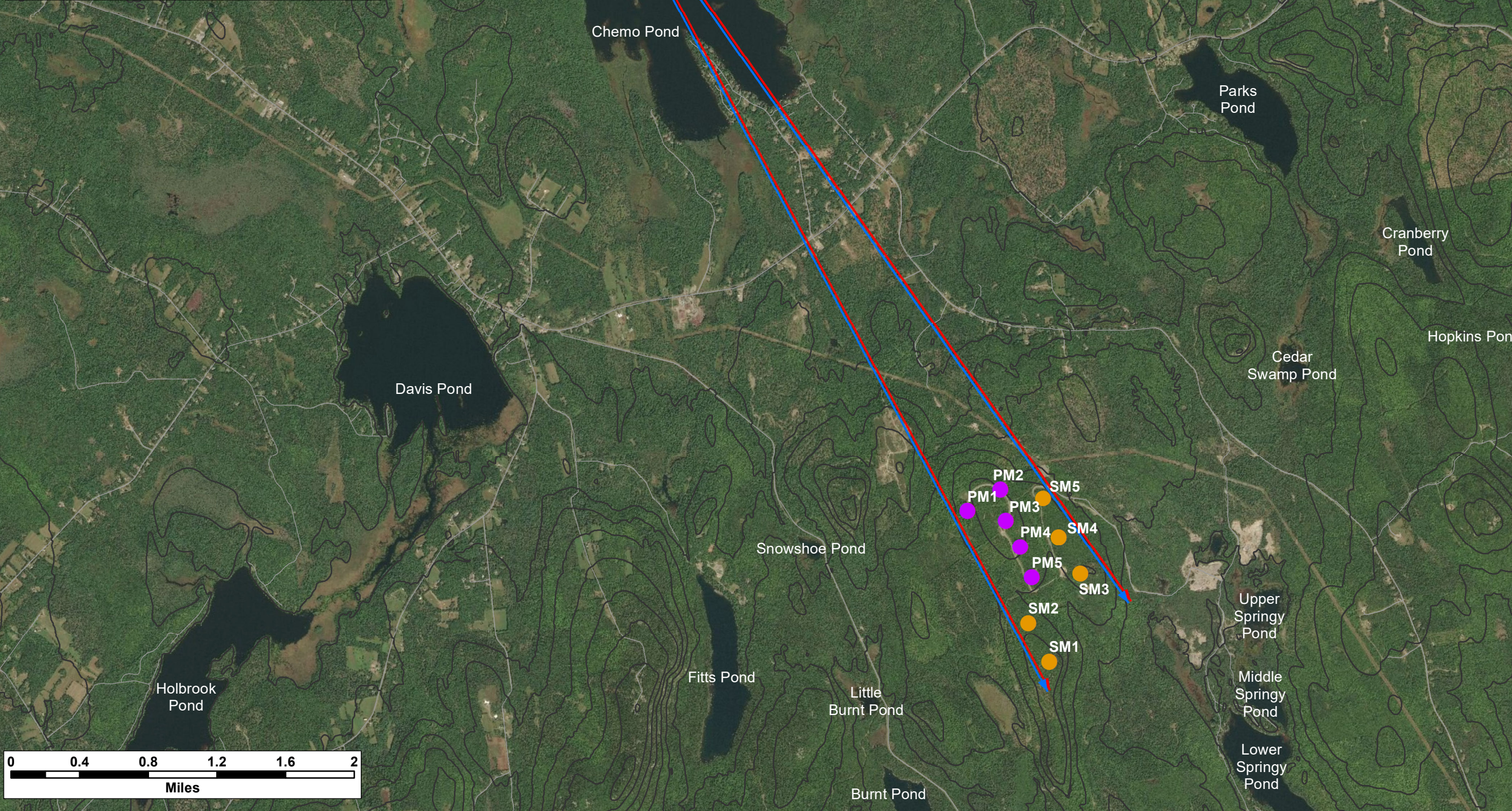
- Elevation (50 ft)
- Roads - NG911

**Silver Maple Wind Project - Chemo Pond Existing Character of Surrounding Area**



Date: April 2020	Project #: 19-6780
Scale: 1:20,000	Drawing #:  <b>B1</b>
Drawn By: M. Savelle	
Checked By: S. Dickey	





**Notes:**  
 1. Data Sources: Maine Office of GIS, Client  
 2. Basemaps: Esri, DigitalGlobe, GeoEye, Earthstar Geographics, CNES/Airbus DS, USDA, USGS, AeroGRID, IGN, and the GIS User Community  
 3. Projection: NAD83 UTM Zone 19

**Legend:**

- Pisgah Mountain Turbine (Existing)
- Silver Maple Wind Turbine (Proposed)
- Elevation (100 ft)
- Roads - NG911
- High Visual Impact Investigation Area
- ↔ Horizontal View Angle - Silver Maple and Pisgah Mountain Turbines
- ↔ Horizontal View Angle - Silver Maple Turbines

**Silver Maple Wind Project - Chemo Pond Extent of View**



Date: April 2020	Project #: 19-6780
Scale: 1:40,000	Drawing #: <b>B2</b>
Drawn By: M. Savelle	
Checked By: S. Dickey	



**Notes:**

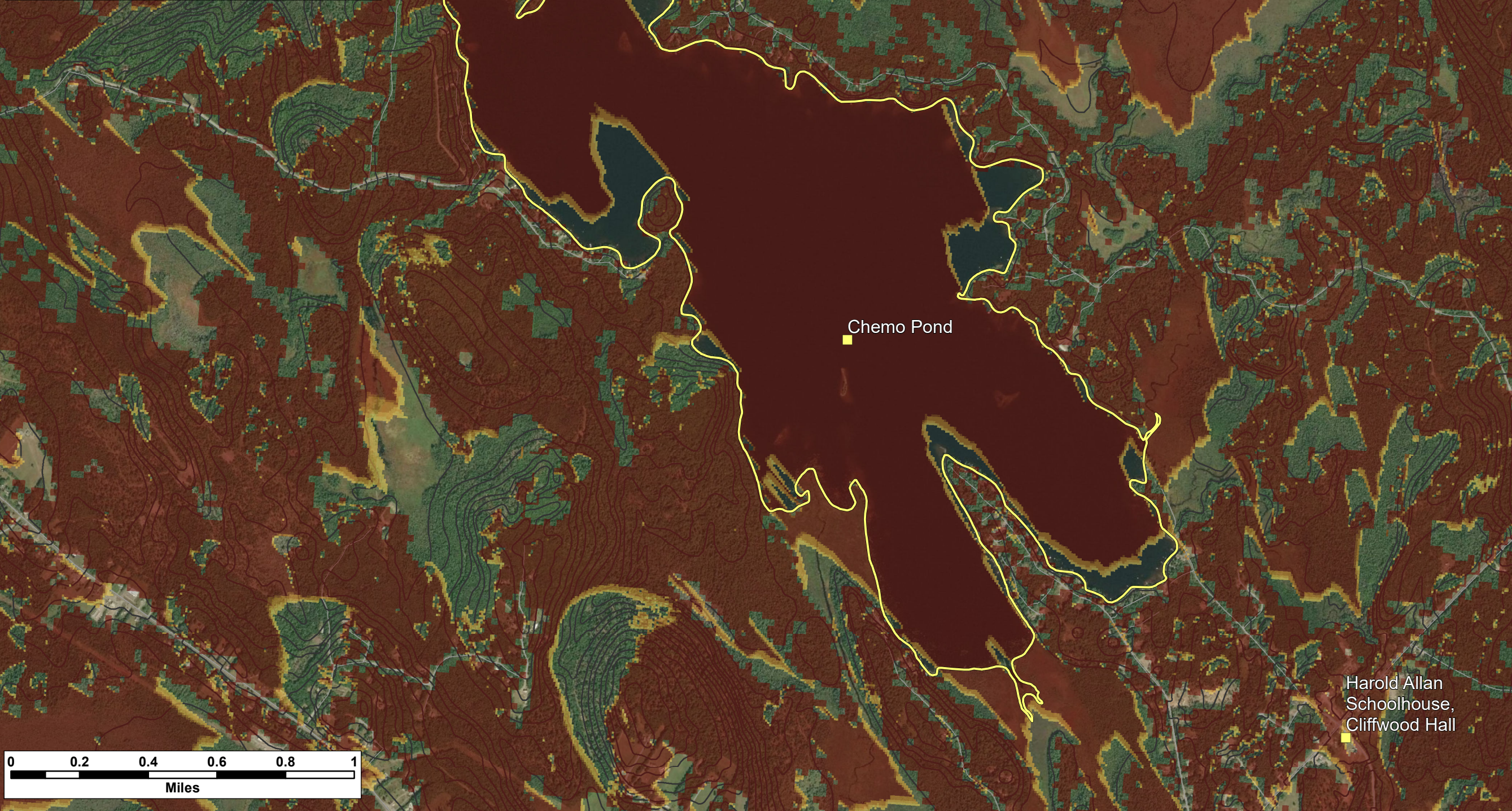
1. Data Sources: Maine Office of GIS, Client
2. Basemaps: Esri, DigitalGlobe, GeoEye, Earthstar Geographics, CNES/Airbus DS, USDA, USGS, AeroGRID, IGN, and the GIS User Community
3. Projection: NAD83 UTM Zone 19

**Legend:**

- Scenic Resource of State and National Significance
- SRSNS
- Elevation (50 ft)
- Roads - NG911

**Number of Visible Turbines**

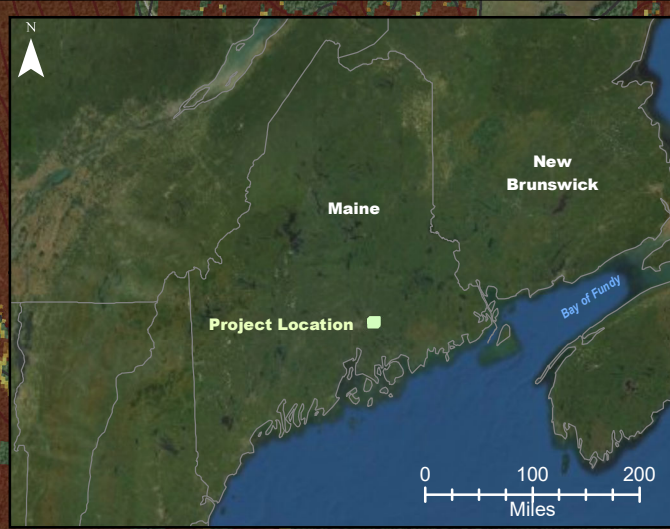
- 1
- 2
- 3
- 4
- 5



**Silver Maple Wind Project - Viewshed Chemo Pond (Bare Ground / 185 m total height)**



Date: April 2020	Project #: 19-6780
Scale: 1:20,000	Drawing #: <b>B3</b>
Drawn By: M. Savelle	
Checked By: S. Dickey	



**Notes:**

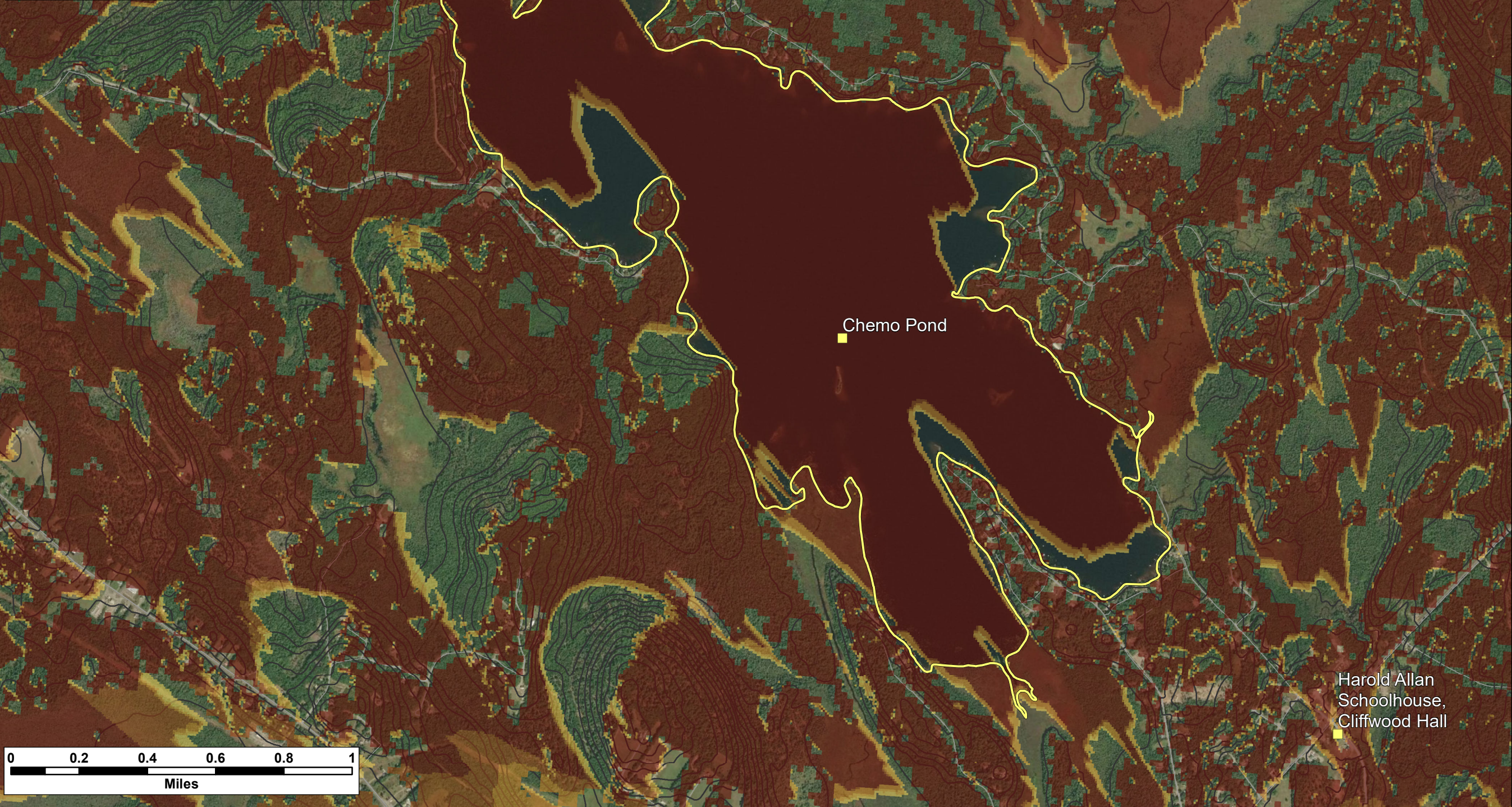
1. Data Sources: Maine Office of GIS, Client
2. Basemaps: Esri, DigitalGlobe, GeoEye, Earthstar Geographics, CNES/Airbus DS, USDA, USGS, AeroGRID, IGN, and the GIS User Community
3. Projection: NAD83 UTM Zone 19

**Legend:**

- SRSNS *Scenic Resource of State and National Significance*
- Elevation (50 ft)
- Roads - NG911

**Number of Visible Turbines**

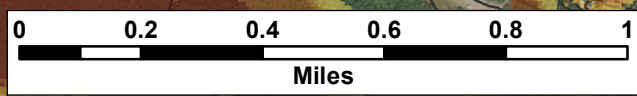
- 1
- 2
- 3
- 4
- 5



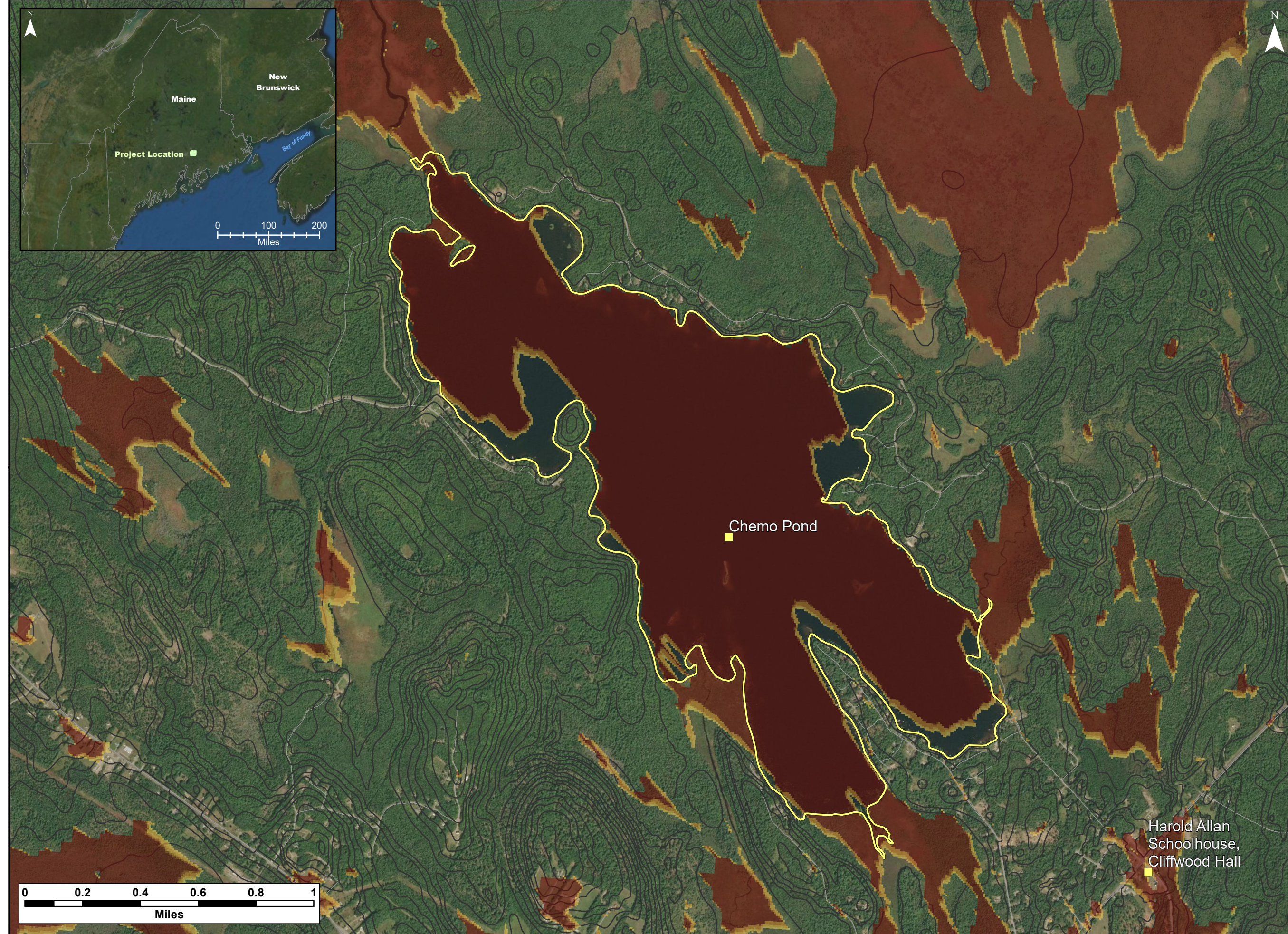
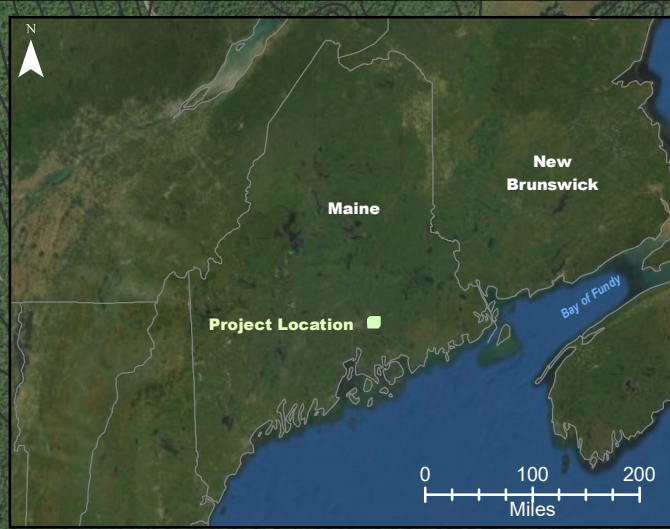
**Silver Maple Wind Project - Viewshed Chemo Pond (Bare Ground / 117 m hub height)**



Date: April 2020	Project #: 19-6780
Scale: 1:20,000	Drawing #: <b>B4</b>
Drawn By: M. Savelle	
Checked By: S. Dickey	



Harold Allan Schoolhouse, Cliffwood Hall



**Notes:**  
 1. Data Sources: Maine Office of GIS, Client  
 2. Basemaps: Esri, DigitalGlobe, GeoEye, Earthstar Geographics, CNES/Airbus DS, USDA, USGS, AeroGRID, IGN, and the GIS User Community  
 3. Projection: NAD83 UTM Zone 19

**Legend:**

- Scenic Resource of State and National Significance
- Elevation (50 ft)
- Roads - NG911

**Number of Visible Turbines**

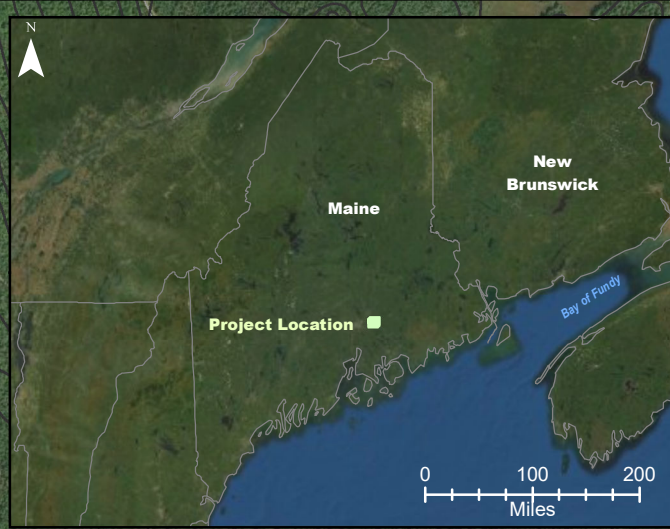
- 1
- 2
- 3
- 4
- 5

**Silver Maple Wind Project - Viewshed Chemo Pond**  
 (12 m or 40 ft Forest / 185 m total height)



Date: April 2020	Project #: 19-6780
Scale: 1:20,000	Drawing #: <b>B5</b>
Drawn By: M. Savelle	
Checked By: S. Dickey	

Harold Allan Schoolhouse, Cliffwood Hall



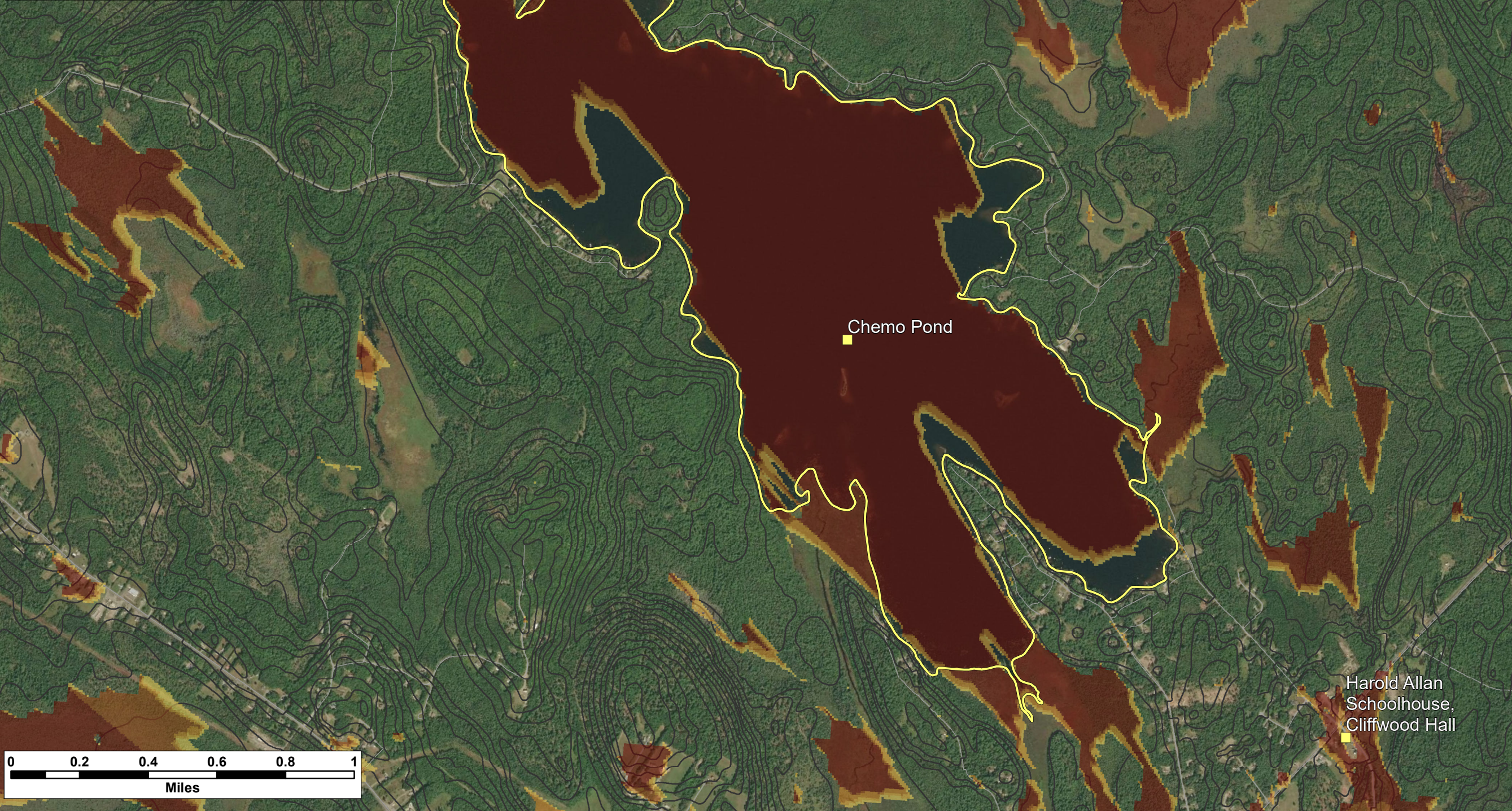
**Notes:**  
 1. Data Sources: Maine Office of GIS, Client  
 2. Basemaps: Esri, DigitalGlobe, GeoEye, Earthstar Geographics, CNES/Airbus DS, USDA, USGS, AeroGRID, IGN, and the GIS User Community  
 3. Projection: NAD83 UTM Zone 19

**Legend:**

- SRSNS *Scenic Resource of State and National Significance*
- Elevation (50 ft)
- Roads - NG911

**Number of Visible Turbines**

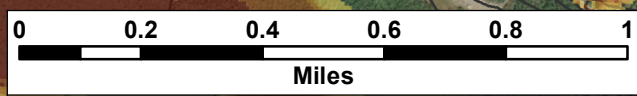
- 1
- 2
- 3
- 4
- 5



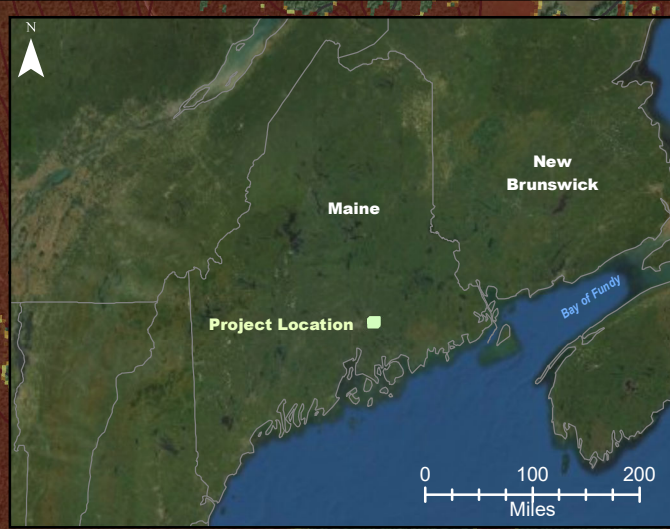
**Silver Maple Wind Project - Viewshed Chemo Pond**  
 (12 m or 40 ft Forest / 117 m hub height)



Date: April 2020	Project #: 19-6780
Scale: 1:20,000	Drawing #: <b>B6</b>
Drawn By: M. Savelle	
Checked By: S. Dickey	



Harold Allan Schoolhouse,  
Cliffwood Hall



**Notes:**

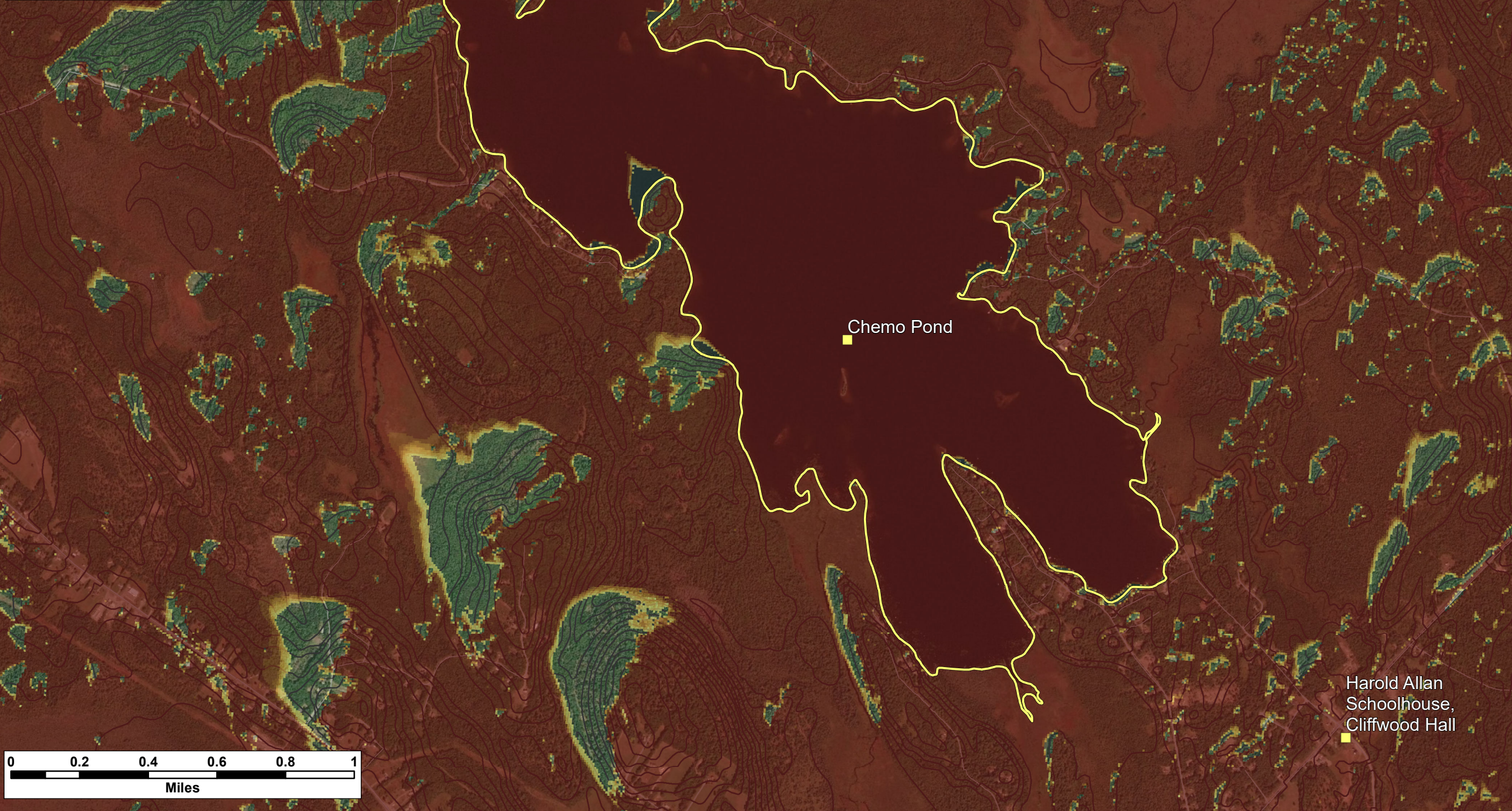
1. Data Sources: Maine Office of GIS, Client
2. Basemaps: Esri, DigitalGlobe, GeoEye, Earthstar Geographics, CNES/Airbus DS, USDA, USGS, AeroGRID, IGN, and the GIS User Community
3. Projection: NAD83 UTM Zone 19

**Legend:**

- Scenic Resource of State and National Significance
- SRSNS
- Elevation (50 ft)
- Roads - NG911

**Number of Visible Turbines**

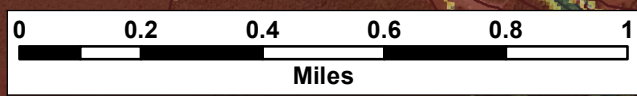
1
2
3
4
5
6
7
8
9
10



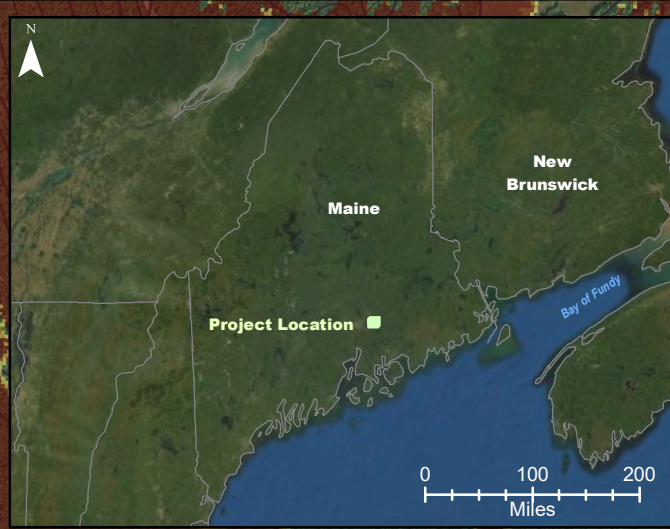
**Cumulative Impacts - Silver Maple Wind Project and Pisgah Mountain Wind Project - Viewshed Chemo Pond (Bare Ground / 185 m & 145 m total heights)**



Date: April 2020	Project #: 19-6780
Scale: 1:20,000	Drawing #: <b>B7</b>
Drawn By: M. Savelle	
Checked By: S. Dickey	







**Notes:**

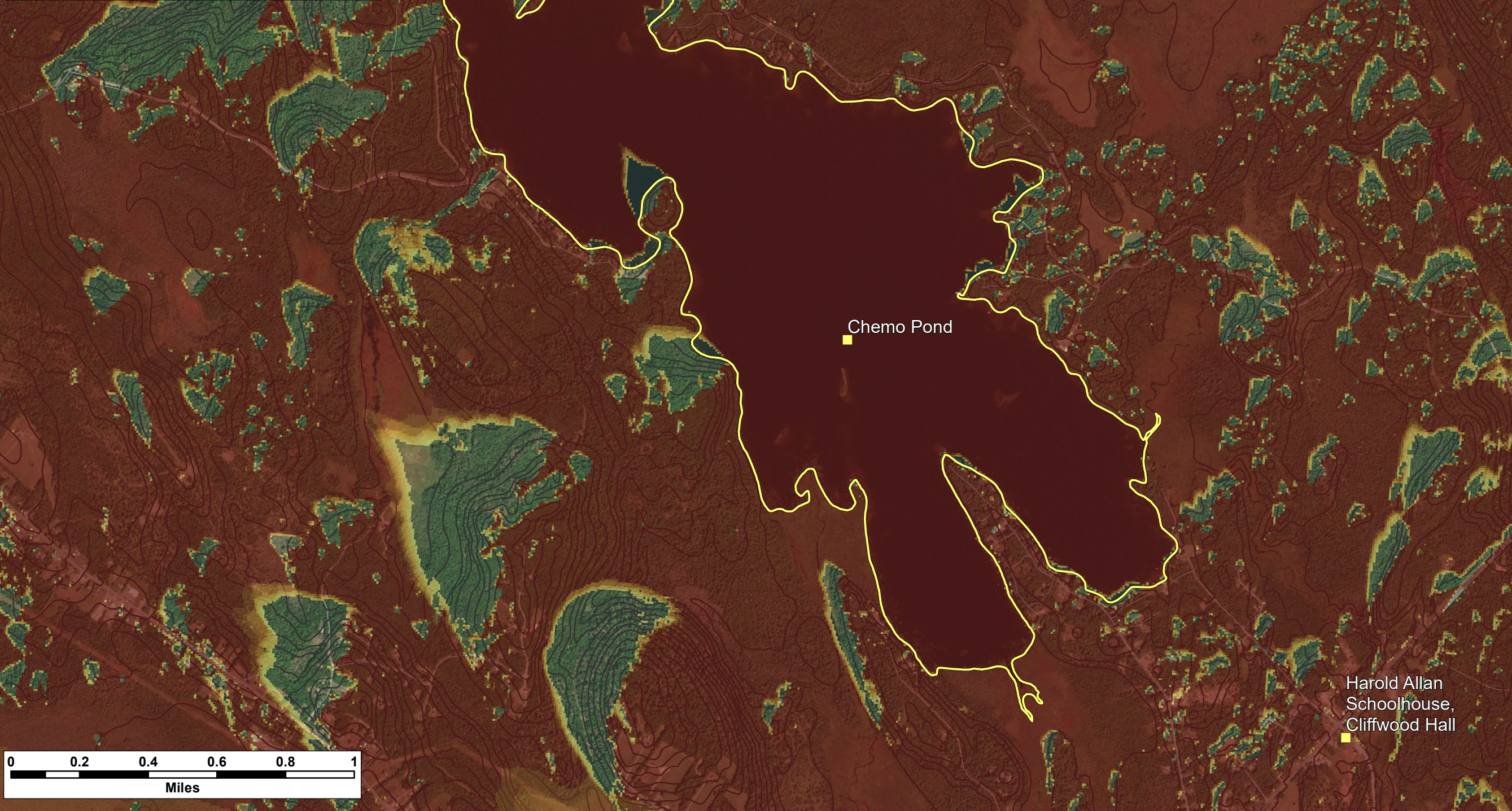
1. Data Sources: Maine Office of GIS, Client
2. Basemaps: Esri, DigitalGlobe, GeoEye, Earthstar Geographics, CNES/Airbus DS, USDA, USGS, AeroGRID, IGN, and the GIS User Community
3. Projection: NAD83 UTM Zone 19

**Legend:**

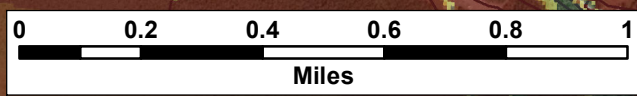
- SRSNS *Scenic Resource of State and National Significance*
- Elevation (50 ft)
- Roads - NG911

**Number of Visible Turbines**

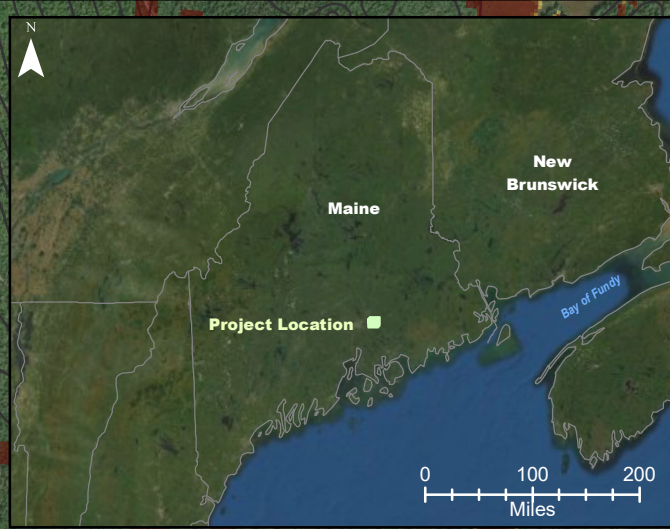
1
2
3
4
5
6
7
8
9
10



**Cumulative Impacts - Silver Maple Wind Project and Pisgah Mountain Wind Project - Viewshed Chemo Pond (Bare Ground / 117 m & 95 m hub heights)**



Date: April 2020	Project #: 19-6780
Scale: 1:20,000	Drawing #: <b>B8</b>
Drawn By: M. Savelle	
Checked By: S. Dickey	



**Notes:**  
 1. Data Sources: Maine Office of GIS, Client  
 2. Basemaps: Esri, DigitalGlobe, GeoEye, Earthstar Geographics, CNES/Airbus DS, USDA, USGS, AeroGRID, IGN, and the GIS User Community  
 3. Projection: NAD83 UTM Zone 19

**Legend:**  
 Scenic Resource of State and National Significance  
 — Elevation (50 ft)  
 — Roads - NG911

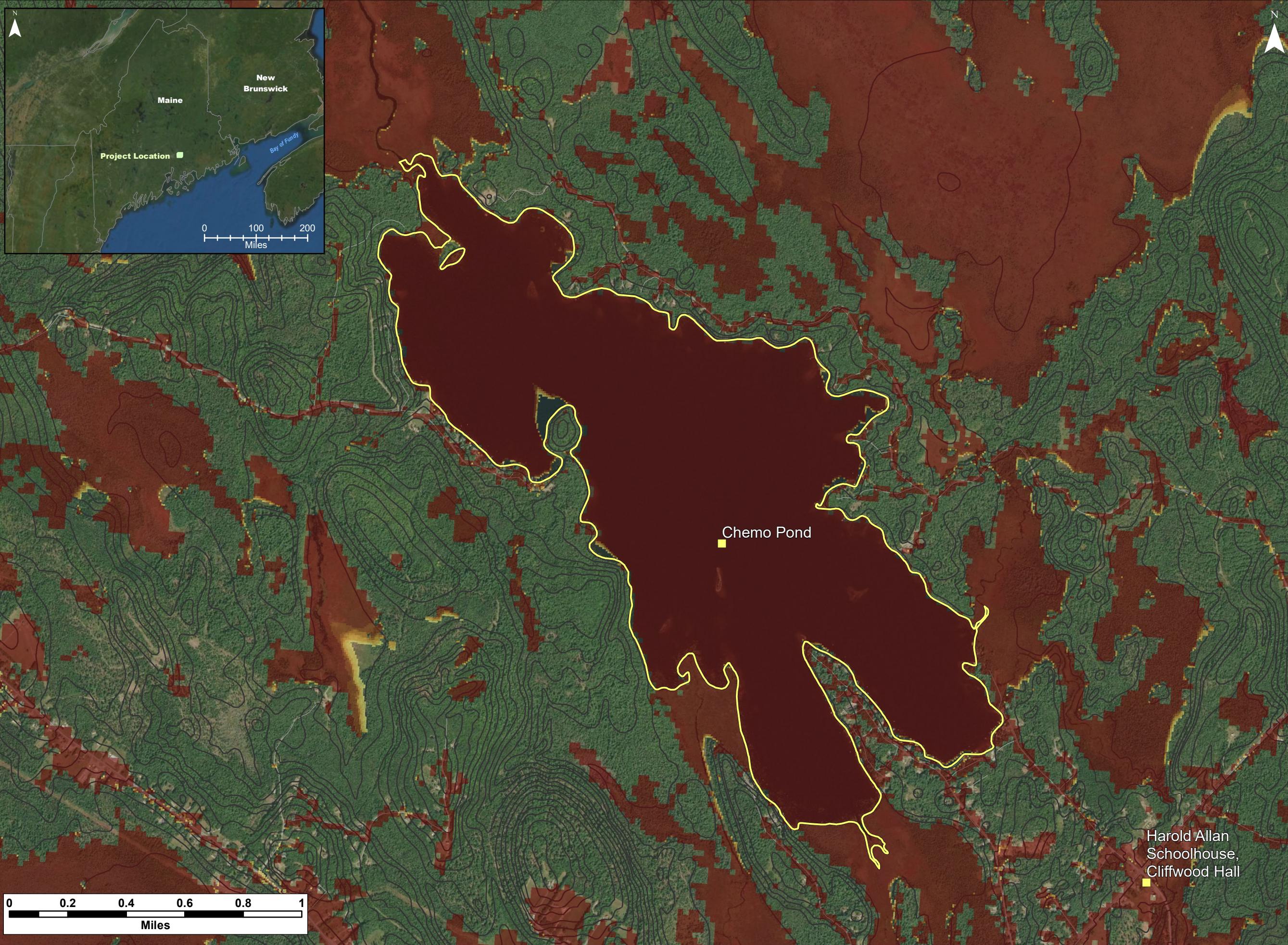
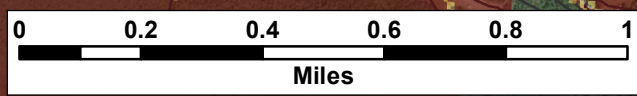
**Number of Visible Turbines**

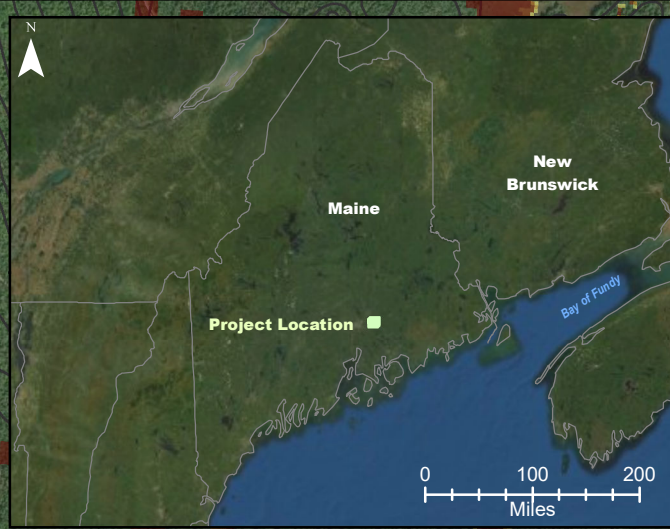
1
2
3
4
5
6
7
8
9
10

**Cumulative Impacts - Silver Maple Wind Project and Pisgah Mountain Wind Project - Viewshed Chemo Pond (12 m or 40ft Forest) / 185 m & 145 m total heights)**



Date: April 2020	Project #: 19-6780
Scale: 1:20,000	Drawing #: <b>B9</b>
Drawn By: M. Savelle	<b>B9</b>
Checked By: S. Dickey	





**Notes:**  
 1. Data Sources: Maine Office of GIS, Client  
 2. Basemaps: Esri, DigitalGlobe, GeoEye, Earthstar Geographics, CNES/Airbus DS, USDA, USGS, AeroGRID, IGN, and the GIS User Community  
 3. Projection: NAD83 UTM Zone 19

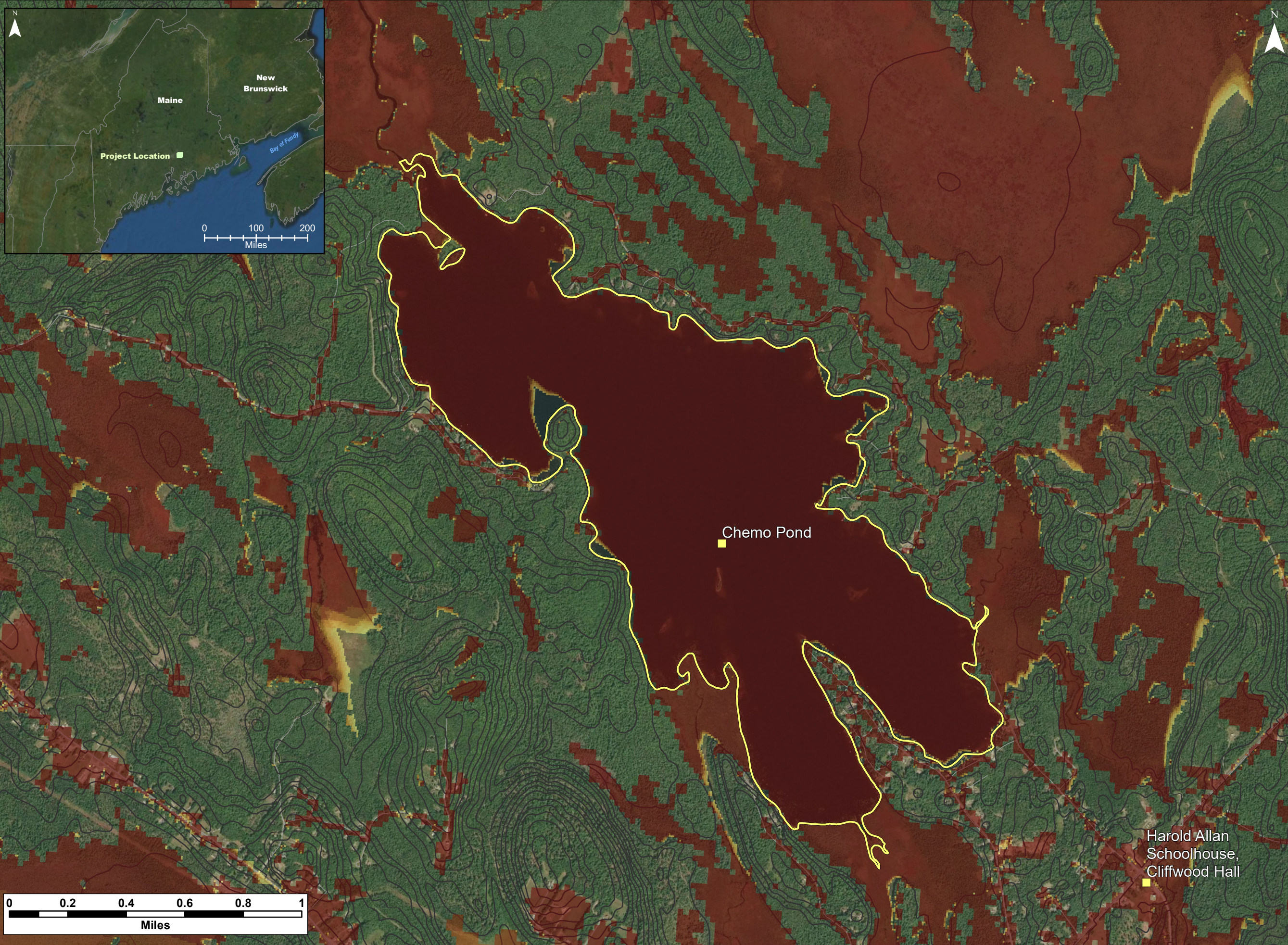
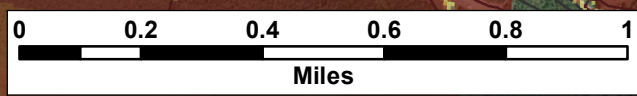
**Legend:**  
 Scenic Resource of State and National Significance  
 SRSNS  
 Elevation (50 ft)  
 Roads - NG911



**Cumulative Impacts - Silver Maple Wind Project and Pisgah Mountain Wind Project - Viewshed Chemo Pond (12 m or 40ft Forest) / 117 m & 95 m hub heights)**



Date: April 2020	Project #: 19-6780
Scale: 1:20,000	Drawing #: <b>B10</b>
Drawn By: M. Savelle	
Checked By: S. Dickey	



Chemo Pond

Harold Allan Schoolhouse,  
Cliffwood Hall



**B11**



**B12**

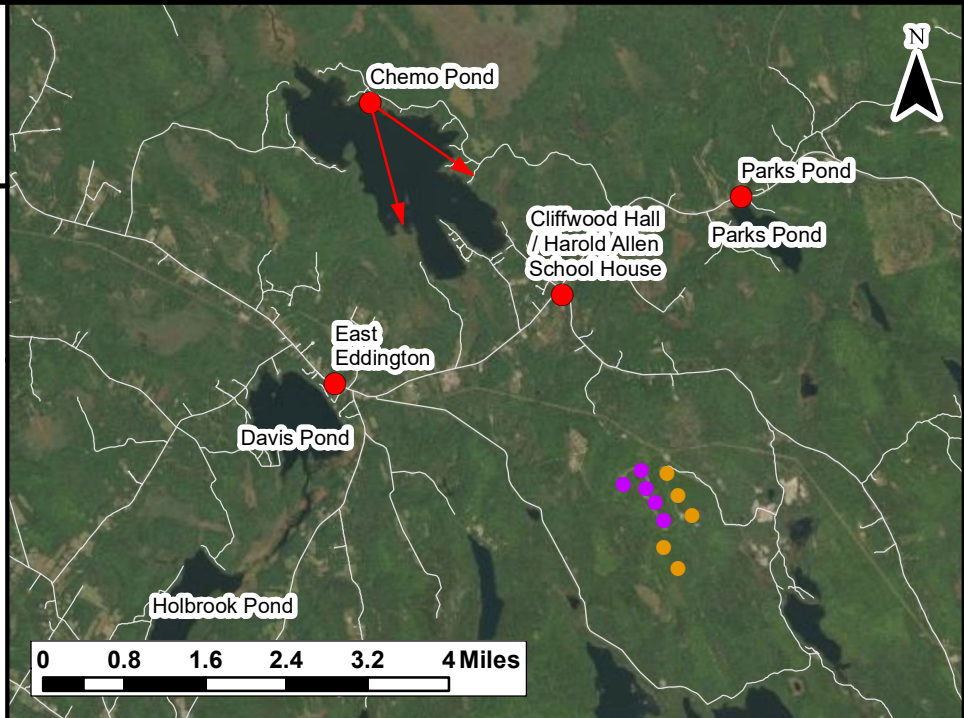


Chemo Pond:

**Notes:**  
 1. Data Sources: Maine Office of GIS, Client  
 2. Basemaps: Esri, DigitalGlobe, GeoEye, Earthstar Geographics, CNES/Airbus DS, USDA, USGS, AeroGRID, IGN, and the GIS User Community  
 3. Projection: NAD83 UTM Zone 19

**Legend:**

- Pisgah Mountain Turbine (Existing)
- Silver Maple Wind Turbine (Proposed)
- Roads - NG911
- ↔ Photosimulation Field of View



**TECHNICAL INFORMATION**

Name of SRSNS:	Chemo Pond
View Coordinates:	Latitude: 44° 49' 58" Longitude: -68° 34' 42" Easting: 533330.31 m Northing: 4964459.85 m
Direction of View:	South to Southeast, Heading 145°
Camera Make/ Model:	Canon EOS 800D
Focal Length:	31.25 mm
Effective Focal Length:	50 mm
Image Resolution:	6000 x 2500
Weather Conditions:	Sunny, Clear Sky
Date of Photo:	2020/02/24
Time of Photo:	15:02
Photo Credit:	CES Inc., Brewer, Maine

**Silver Maple Wind Project Expansion - Photosimulation for Chemo Pond**



Date:	Project #:
March 2020	19-6780
Scale:	Drawing #:
1:120,000	<b>B13</b>
Drawn By:	Checked By:
M. Savelle	S. Dickey



**B14**