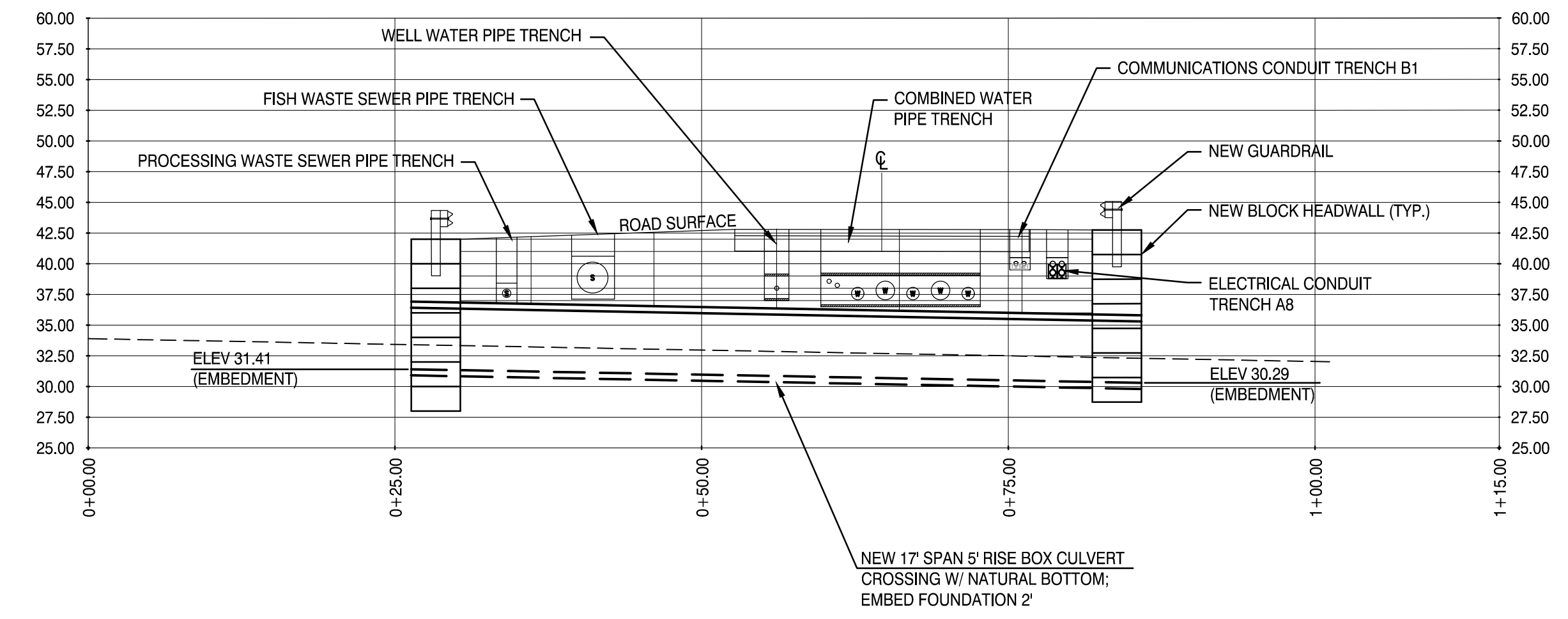
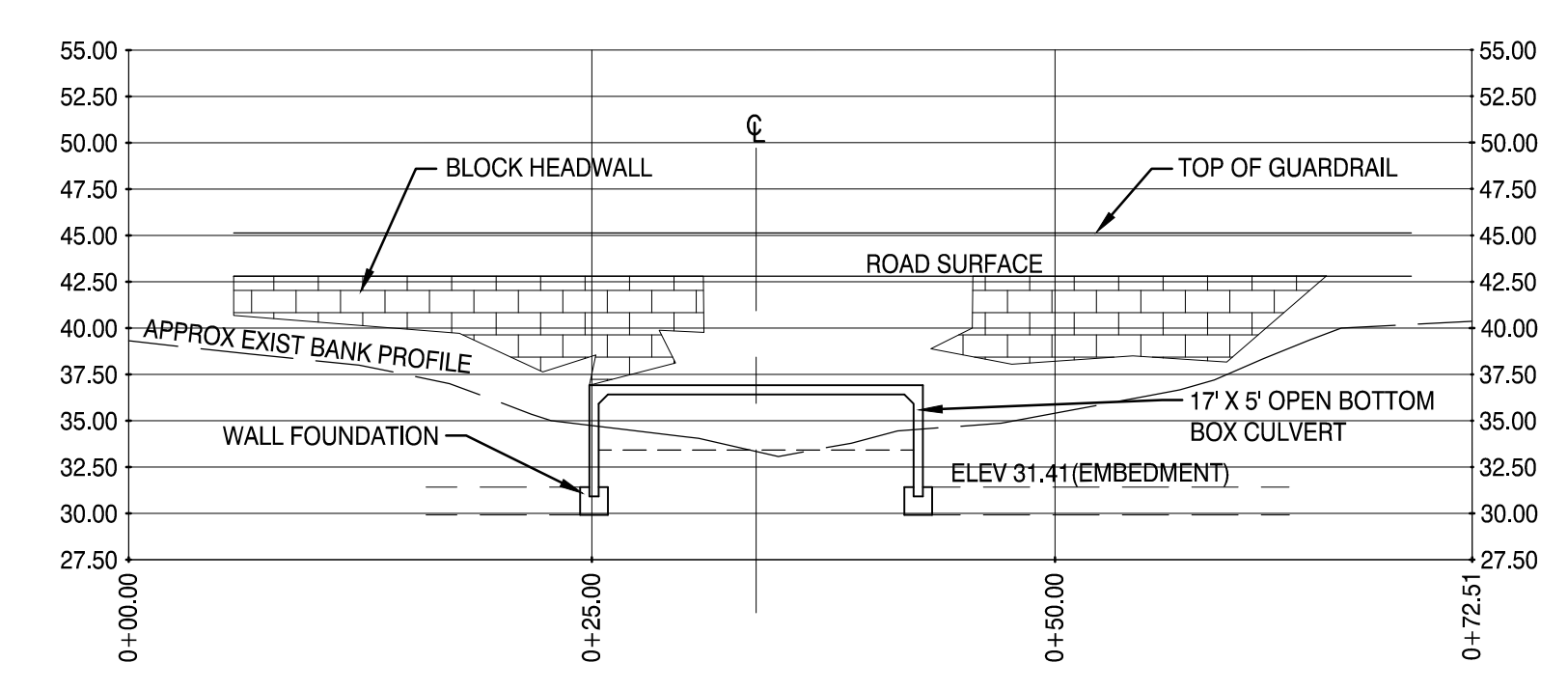


CROSSING SITE PLAN A9
1"=30'



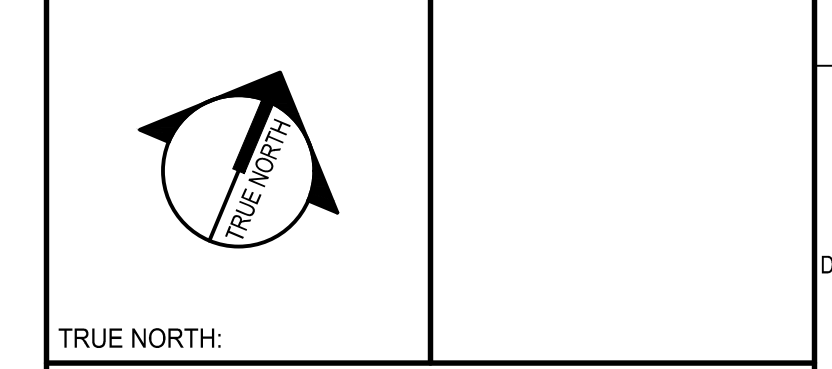
CROSSING PROFILE G1
AS SHOWN



CROSSING SECTION A1
AS SHOWN

REV	DESCRIPTION	DATE

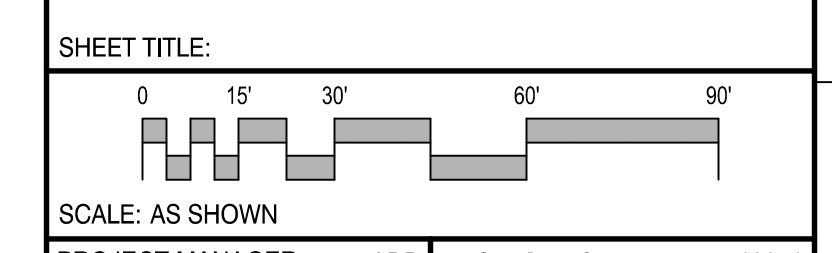
ISSUED FOR PERMIT
CURRENT ISSUE STATUS:



SMRT Architects and Engineers
144 Fore Street/P.O. BOX 618
Portland, Maine 04104
1.877.700.7678
www.smrtinc.com
ARCHITECTURE | ENGINEERING | PLANNING | INTERIORS | ENERGY
SMRT
RANSOM Consulting Engineers and Scientists
Ransom Consulting Engineers and Scientists
400 Commercial Street, Suite 400
Portland, Maine 04101

NORDIC AQUAFARMS
285 NORTHPORT AVENUE
BELFAST, MAINE

CULVERT CROSSING PLAN, SECTIONS, & DETAILS



PROJECT MANAGER: ADB	PROJECT NO: 18076
A/E OF RECORD:	
JOB CAPTAIN: SP	
DRAWN BY: WSM	
SMRT FILE: CG201-18076	SHEET No.

CG201

NOT FOR CONSTRUCTION