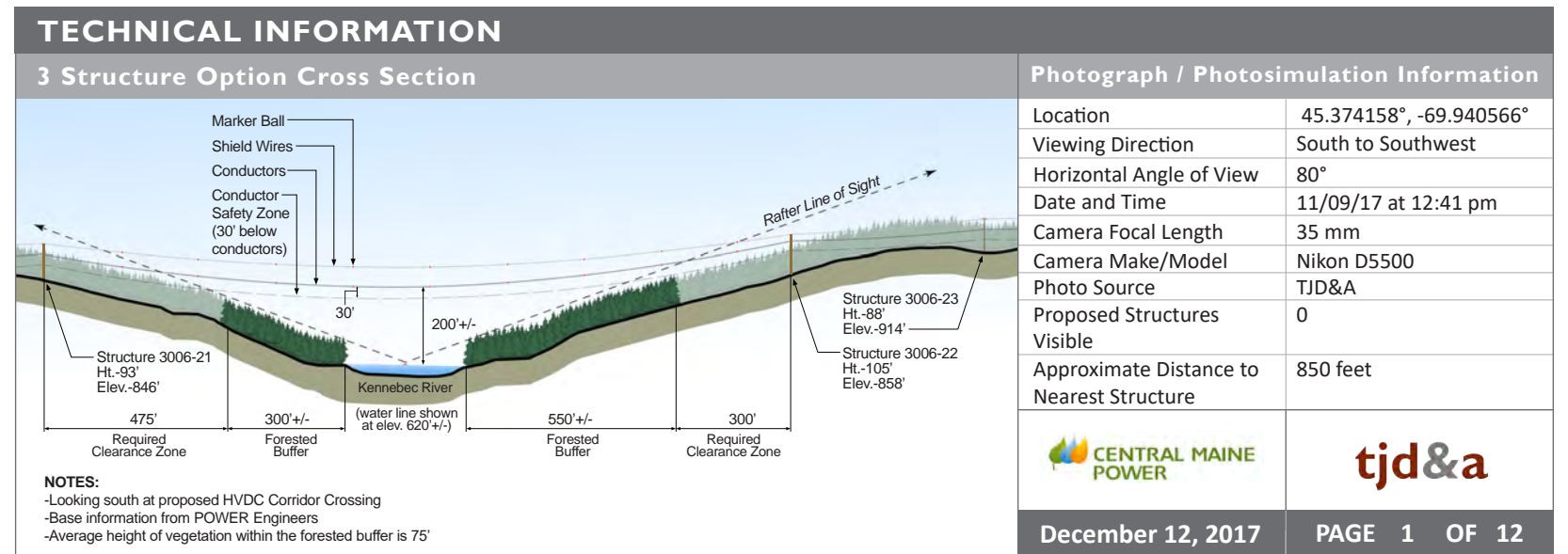
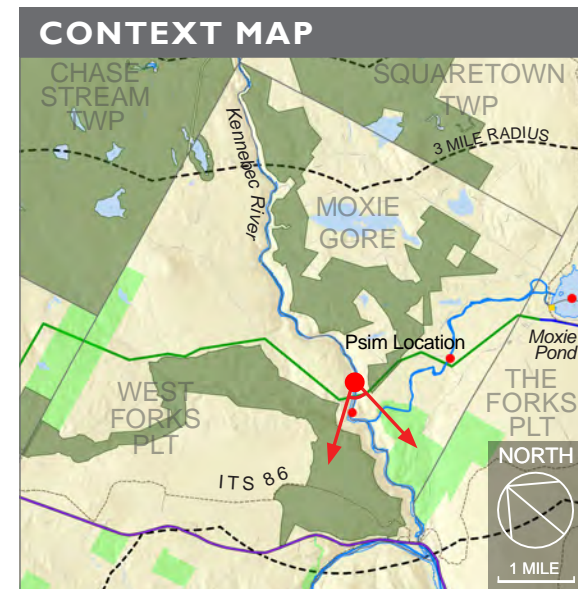
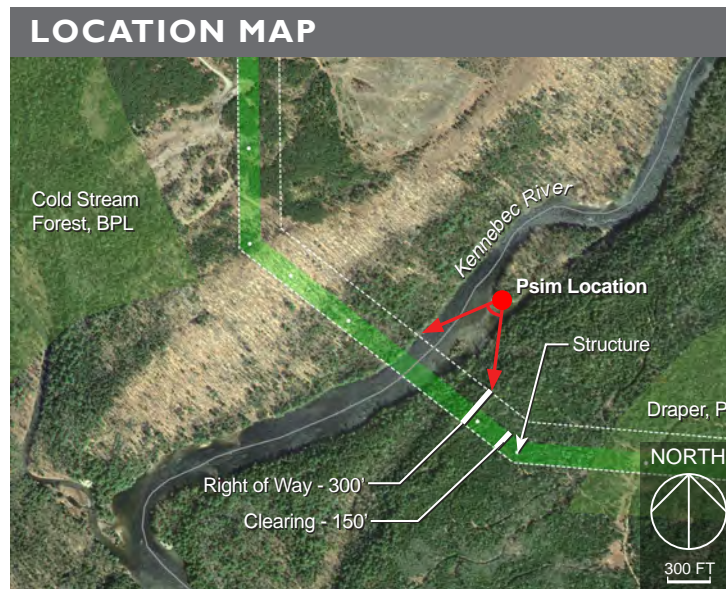


PHOTOSIMULATION 32: KENNEBEC GORGE PICNIC AREA Looking Southwest, 3 Structure Option



Proposed Conditions: Panoramic view looking from south to southwest from a point 750' +/- north of the proposed HVDC transmission line crossing of the Kennebec River near a rafting company picnic area. The closest structure, screened by vegetation in this view, is 850' +/- to the south. Conductors, approximately 200' above the river, will be visible to recreational boaters for approximately 1,600' approaching the crossing. Marker balls will be visible on the shield wires and conductors.





Existing Conditions: Normal view looking south from a picnic area on the Kennebec River.



Proposed Conditions: Normal view looking south from a point 750' +/- north of the proposed HVDC transmission line crossing of the Kennebec River near a picnic area. The closest structure, screened by vegetation in this view, is 850' +/- to the south. Conductors over the river will be visible to recreational boaters for approximately 1,600' approaching the crossing.



Existing Conditions: Normal view looking southwest from a picnic area on the Kennebec River.

PHOTOSIMULATION 32D: KENNEBEC GORGE PICNIC AREA Looking Southwest, 3 Structure Option



Proposed Conditions: Normal view looking southwest from a point 750' +/- north of the proposed HVDC transmission line crossing of the Kennebec River near picnic area. The closest structure, screened by vegetation in this view, is 850' +/- to the south. Conductors over the river will be visible to recreational boaters for approximately 1,600' approaching the crossing.



Existing Conditions: Normal view looking southwest from a picnic area on the Kennebec River.

PHOTOSIMULATION 32G: KENNEBEC GORGE PICNIC AREA Looking Southwest, 3 Structure Option

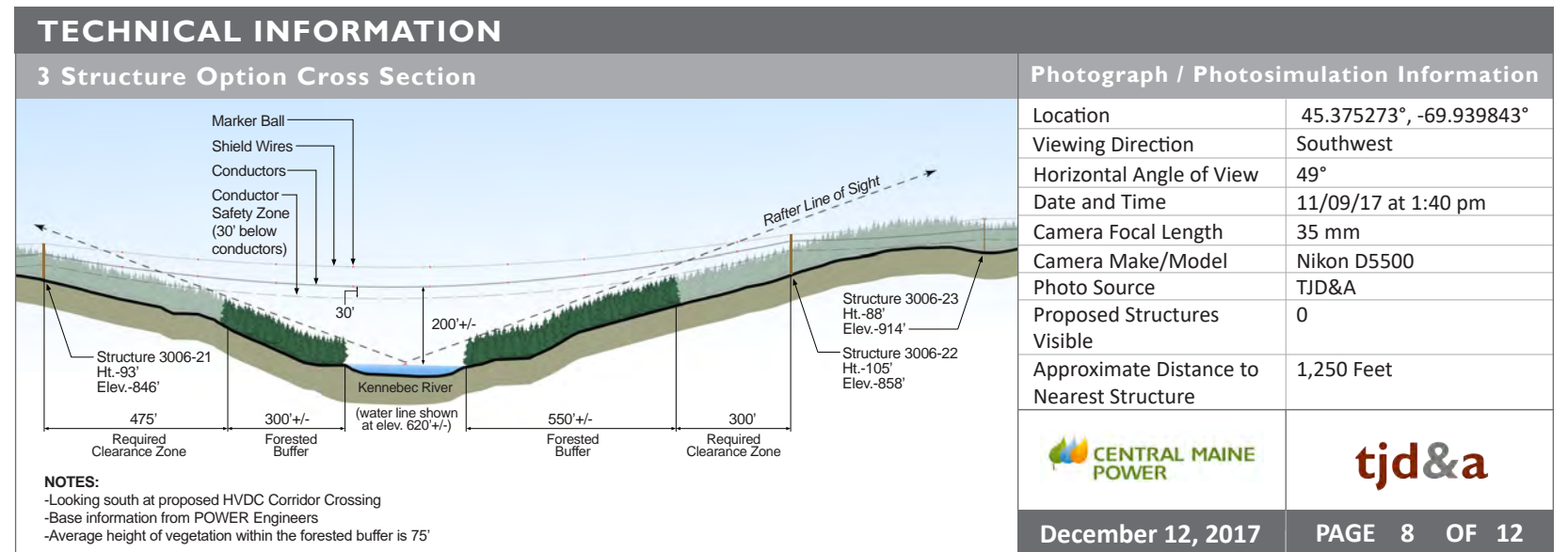
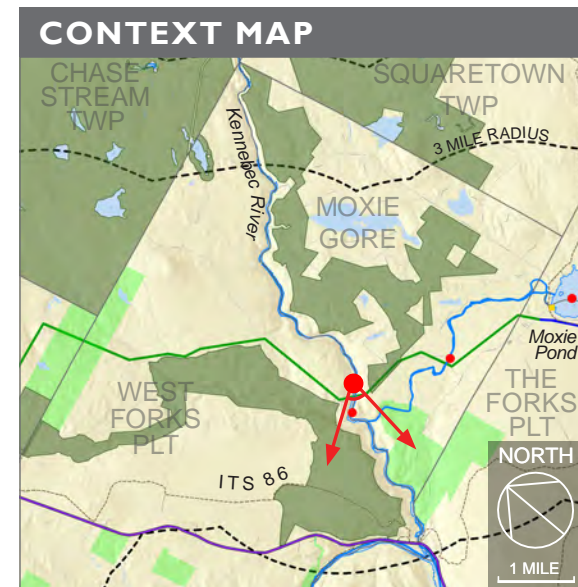
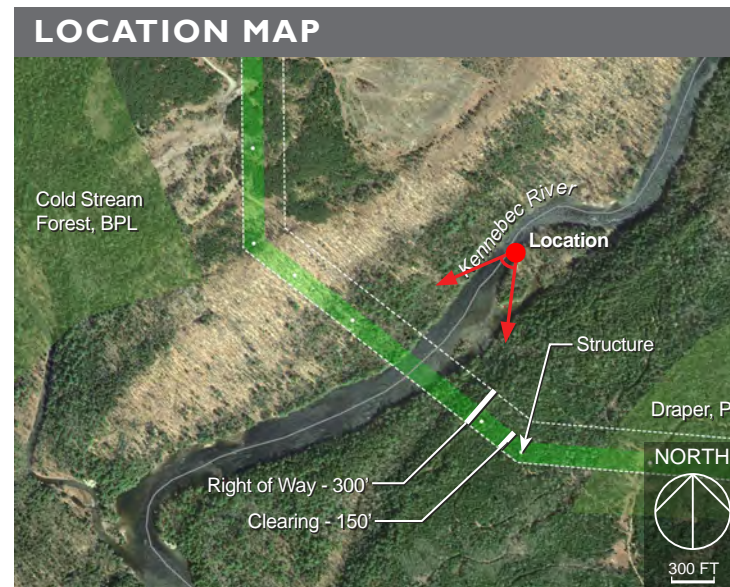


Proposed Conditions: Normal view looking southwest from a point 750' +/- north of the proposed HVDC transmission line crossing of the Kennebec River near picnic area. The closest structure, screened by vegetation in this view, is 850' +/- to the south. Conductors over the river will be visible to recreational boaters for approximately 1,600' approaching the crossing.

PHOTOSIMULATION 33: NORTH OF PICNIC AREA, 3 Structure Option



Proposed Conditions: Panoramic view looking southwest from a point 1,150' +/- north of the proposed HVDC transmission line crossing of the Kennebec River, north of a picnic area. The closest structure, screened by vegetation in this view, is 1,250' +/- to the southwest. Conductors, approximately 200' above the river, will be visible to recreational boaters for approximately 1,600' approaching the crossing. Marker balls will be visible on the shield wires and conductors.



PHOTOSIMULATION 33A: NORTH OF PICNIC AREA, 3 Structure Option



Existing Conditions: Normal view looking southwest on the Kennebec River, north of the picnic area.

PHOTOSIMULATION 33B: NORTH OF PICNIC AREA, 3 Structure Option



Proposed Conditions: Normal view looking southwest from a point 1,150' +/- north of the proposed HVDC transmission line crossing of the Kennebec River, north of the picnic area. The closest structure, screened by vegetation in this view, is 1,250' +/- to the southwest. Conductors over the river will be visible to recreational boaters for approximately 1,600' approaching the crossing.



Existing Conditions: Normal view looking southwest from the Kennebec River, north of the picnic area.

PHOTOSIMULATION 33D: FROM NORTH OF PICNIC AREA, 3 Structure Option



Proposed Conditions: Normal view looking southwest from the Kennebec River toward the proposed HVDC transmission line conductors and marker balls. Structures would be screened from view by vegetation. Conductors over the river will be visible to recreational boaters for approximately 1,600' approaching the crossing.