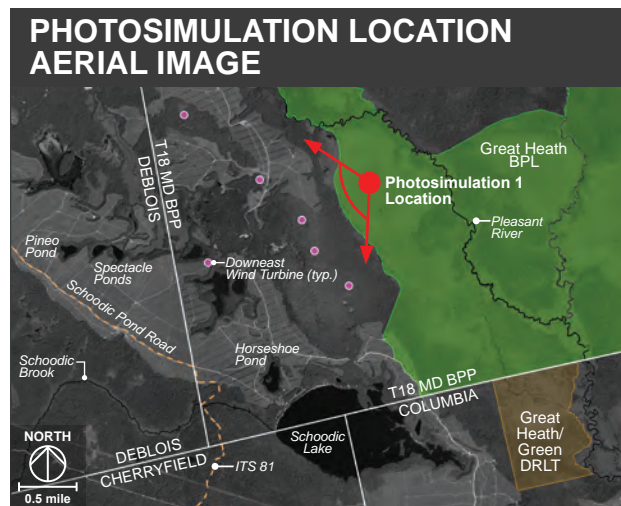


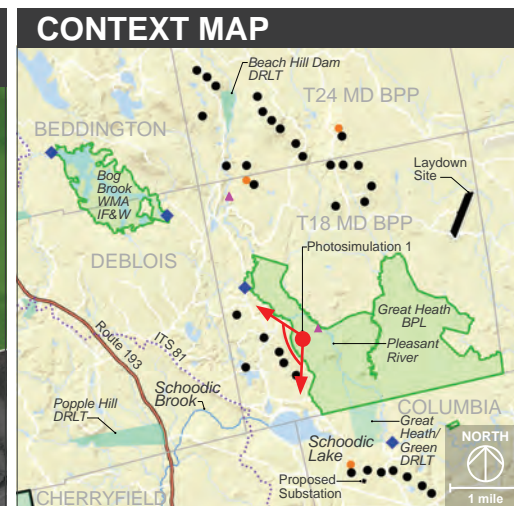
PHOTOSIMULATION 1: GREAT HEATH, T18 MD BPP



Panoramic view looking south to northwest from the Great Heath toward a portion of the proposed Downeast Wind Project. Six turbines will be visible looking in this direction from a distance of 0.6 to 1.6 miles.



Layout: DOWLayout39 (33 turbines)



Legend

- Downeast Wind Turbine (proposed layout 33)
- Meteorological Tower
- Township
- County Boundary
- Conservation Land-Public
 - WMA (Wildlife Management Area)
 - Maine BPL (Bureau of Parks and Lands)
 - IF&W (Inland Fisheries and Wildlife)
- Conservation Land-Private
 - DRLT (Downeast Rivers Land Trust)
 - TNC (The Nature Conservancy)
 - MASC (Maine Atlantic Salmon Commission)
- ◆ Boat Launch
- ▲ Campsite
- ⋯ ITS (Interconnected Trail System)
- Major Road
- Photosimulation Location

TECHNICAL INFORMATION

Turbine Specifications	Photograph Information	
	Location	44.726528°, -67.887930°
	Viewing Direction	South to Northwest
	Horizontal Angle of View	98°
	Date and Time	05/03/21 at 9:04am
	Camera Focal Length	50 mm
	Camera Make/Model	Nikon D750
	Photo Source	TJD&A
Proposed Turbines Visible	6	
Closest Visible Turbine	0.6 mile	

DOWNEAST WIND PROJECT

Great Heath Visual Assessment
June 4, 2021
Page 1 of 10



Normal view looking southwest from the Great Heath.



Normal view looking southwest from the Great Heath toward the proposed Downeast Wind Project. Two turbines will be visible from a distance of 0.7 to 0.85 miles.



Normal view looking southwest from the Great Heath.



Normal view looking southwest from the Great Heath toward the proposed Downeast Wind Project. Three turbines will be visible from a distance of 0.6 to 1.5 miles.



Normal view looking northwest from the Great Heath.

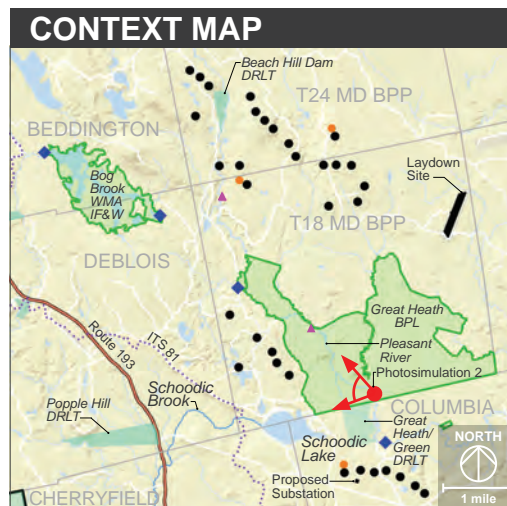
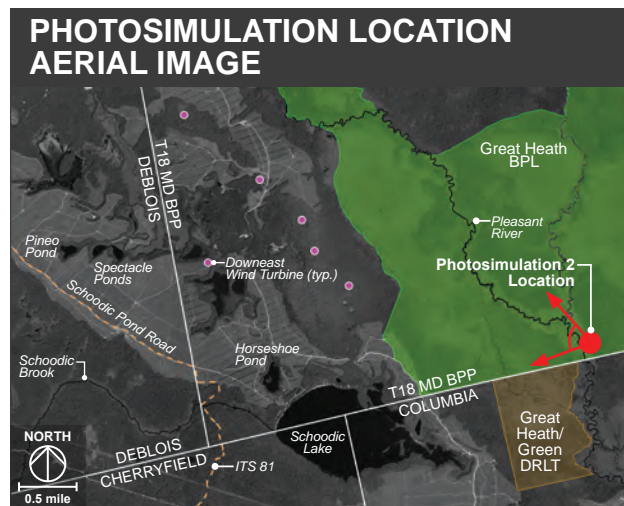


Normal view looking northwest from the Great Heath toward the proposed Downeast Wind Project. Two turbines will be visible from a distance of 0.9 to 1.6 miles.

PHOTOSIMULATION 2: PLEASANT RIVER, T18 MD BPP



Panoramic view looking southwest to northwest from the Pleasant River toward a portion of the proposed Downeast Wind Project. Five turbines and the blades of one turbine will be visible looking in this direction from a distance of 2.0 to 3.8 miles.



- Legend**
- Downeast Wind Turbine (proposed layout 33)
 - Meteorological Tower
 - Township
 - County Boundary
 - Conservation Land-Public
 - WMA (Wildlife Management Area)
 - Maine BPL (Bureau of Parks and Lands)
 - IF&W (Inland Fisheries and Wildlife)
 - Conservation Land-Private
 - DRLT (Downeast Rivers Land Trust)
 - TNC (The Nature Conservancy)
 - MASC (Maine Atlantic Salmon Commission)
 - ◆ Boat Launch
 - ▲ Campsite
 - ⋯ ITS (Interconnected Trail System)
 - Major Road
 - Photosimulation Location

TECHNICAL INFORMATION		DOWNEAST WIND PROJECT
Turbine Specifications	Photograph Information	
	Location	44.707375°, -67.851237°
	Viewing Direction	Southwest to Northwest
	Horizontal Angle of View	17°
	Date and Time	05/03/21 at 12:28pm
	Camera Focal Length	50 mm
	Camera Make/Model	Nikon D750
Photo Source	TJD&A	Great Heath Visual Assessment June 4, 2021 Page 8 of 10
Proposed Turbines Visible	6	
Closest Visible Turbine	2.0 miles	

Layout: DOWLayout39 (33 turbines)



Normal view looking northwest from the Pleasant River.



Normal view looking northwest from the Pleasant River toward the proposed Downeast Wind Project. Five turbines and the blades of one turbine will be visible looking in this direction from a distance of 2.0 to 3.8 miles.