



Maine Department of Environmental Protection Waste Discharge Permit Application

Outfall Information

DEPLW0102

Revised: 05/21/2020

This form must be attached to the General Application for a Waste Discharge License / MEPDES Permit
(Form DEPLW0105-B2003)

Please answer all questions completely, using additional pages as necessary with responses clearly identified by item number on this form.

1. Facility Name: _____ MEPDES # ME _____

2. Attach a plan of the treatment facility or discharge sources showing the location of each outfall and the receiving water. Please number each outfall with the corresponding number from the permit application. See Outfall Figure 1

3. For each outfall, provide the following information. Please use additional forms as necessary to describe all outfall locations.

A. Outfall name: _____ Outfall number: _____

B. Flow discharged. Average: _____MGD Maximum: _____MGD

C. Diameter of outfall pipe: _____inches

D. Depth below mean low water at outlet: _____feet

E. Describe any diffusers, mixers or similar structures used to disperse the effluent.
Please include drawings or diagrams as appropriate. (use a separate sheet)

F. Latitude and Longitude Coordinates:

A. Outfall name: _____ Outfall number: _____

B. Flow discharged. Average: _____MGD Maximum: _____MGD

C. Diameter of outfall pipe: _____inches

D. Depth below mean low water at outlet: _____feet

E. Describe any diffusers, mixers or similar structures used to disperse the effluent.
Please include drawings or diagrams as appropriate. (use a separate sheet) Att. O-2

F. Latitude and Longitude Coordinates:

Legend and Notes

- Lease Boundary
- Mooring Grid Boundary
- Pen Outline
- Barge Outline
- 1-Mile Buffer

- General Notes:
- Basemap from USA Topo server.
 - Some features shown are approximate in location and scale.
 - GIS data accessed and downloaded from the Maine Office of GIS, NOAA Digital Coast, and/or The National Map.
 - Pen layout and intake/discharge structure locations based on plans prepared by Aqua Knowledge AS.

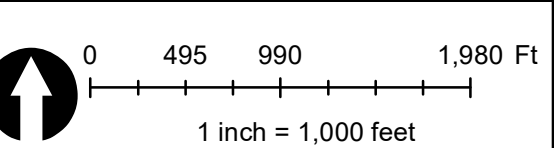
Prepared For

American Aquafarms
68 Commercial Street
Portland, Maine

Site Address

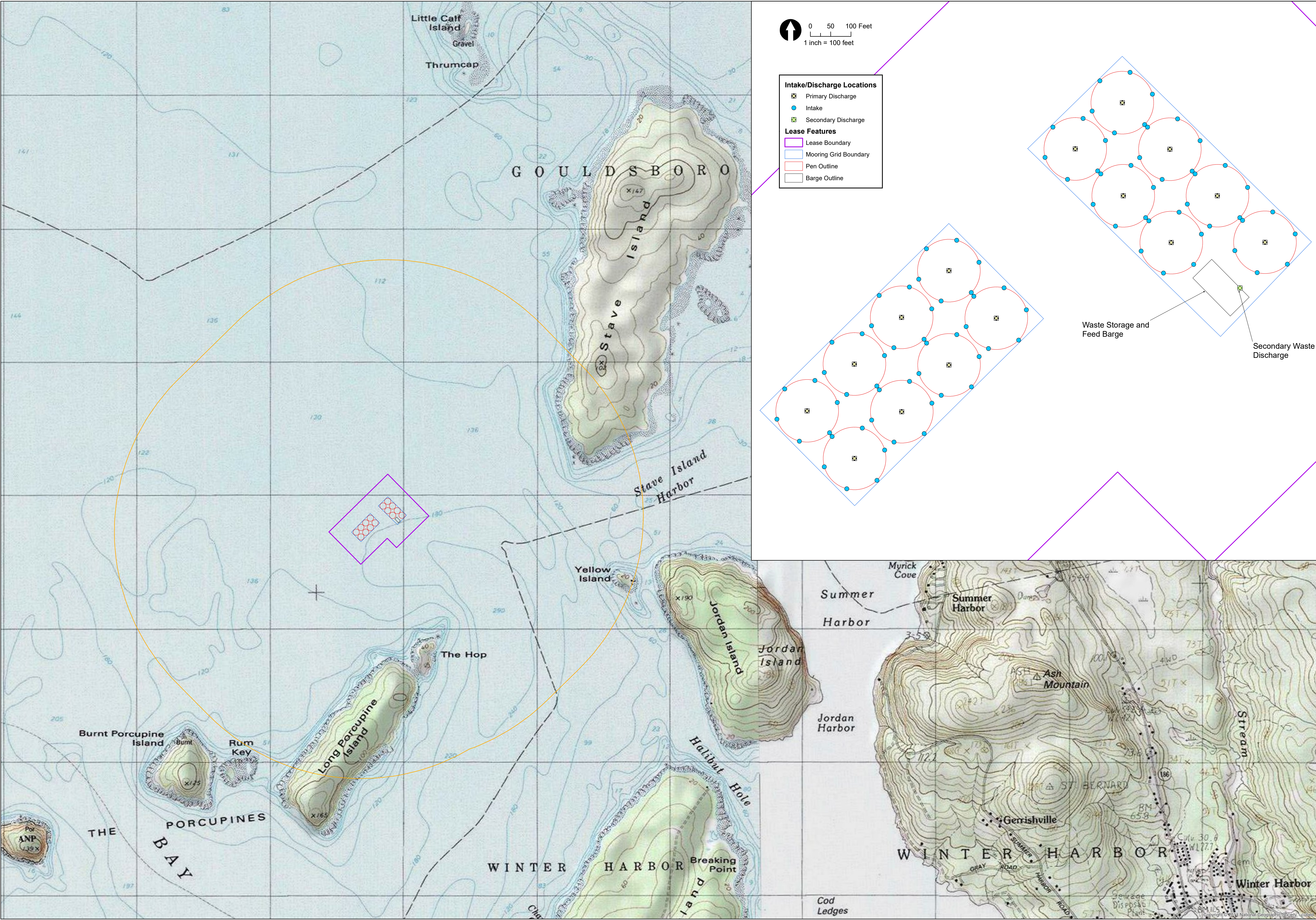
Long Porcupine
Frenchman Bay
Gouldsboro, Maine

Orientation and Scale



201.05012 | Apr 2021

Supplemental Figure 1
Intake/Discharge
Layout and Nearby
Features





ATTACHMENT O-1
OUTFALL 1 LATITUDE/LONGITUDE COORDINATES

Proposed coordinates for Outfall 1 (15 pen outfalls) are provided in the table below.

Table 1-1: Outfall 1 Coordinates

Pen ID	Latitude	Longitude
1	44.421655	-68.160871
2	44.421343	-68.161321
3	44.421030	-68.161771
4	44.420718	-68.162221
5	44.421330	-68.160429
6	44.421018	-68.160879
7	44.420705	-68.161329
8	44.420393	-68.161779
9	44.422468	-68.159668
10	44.422148	-68.159220
11	44.421829	-68.158772
12	44.422778	-68.159220
13	44.422460	-68.158777
14	44.422142	-68.158333
15	44.421824	-68.157889

