

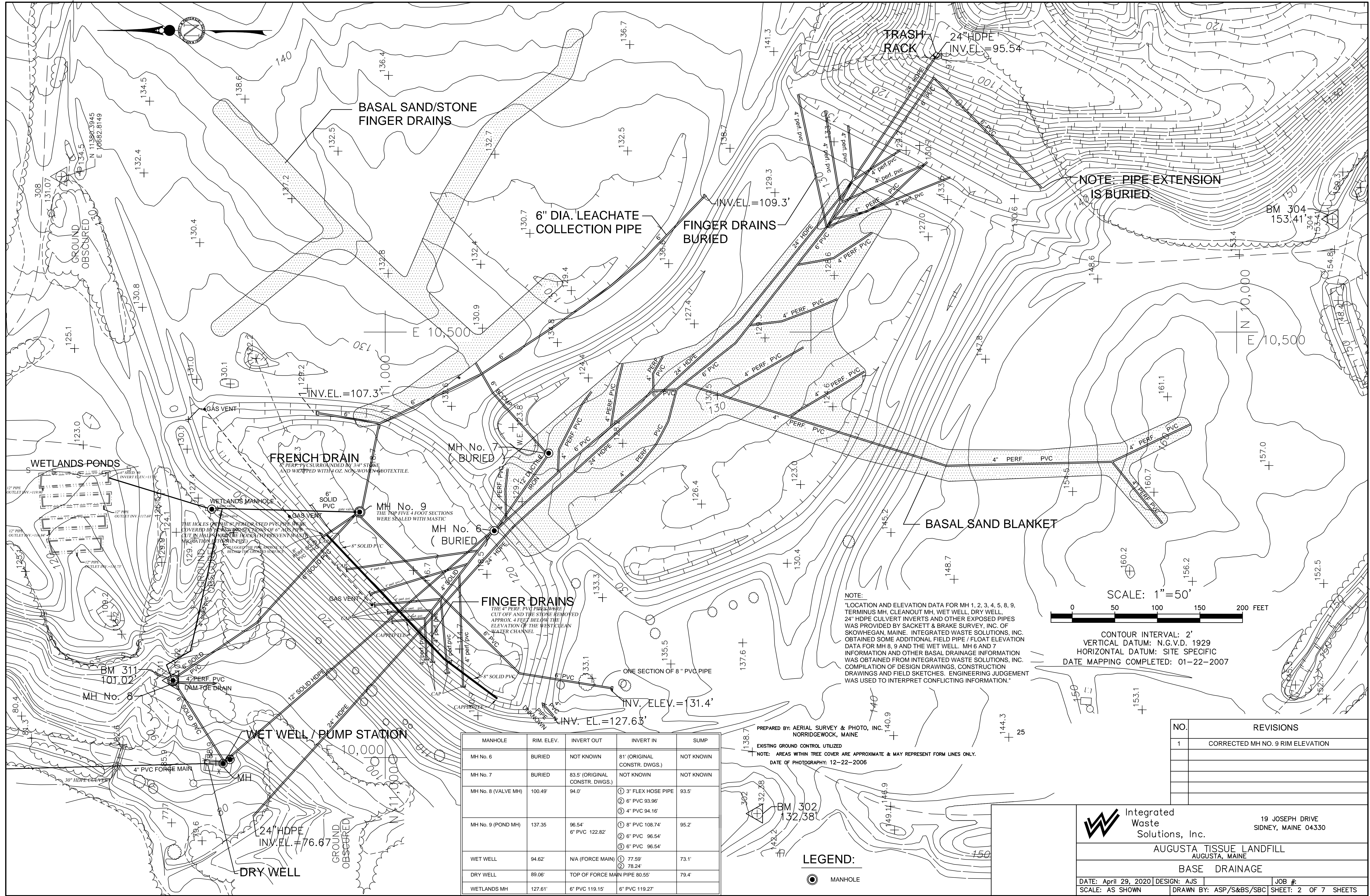
# LEACHATE COLLECTION SYSTEM AS - BUILTS AUGUSTA TISSUE LANDFILL

## INDEX OF DRAWINGS:

<u>SHEET</u>	<u>DRAWING</u>
1	COVER SHEET
2	BASE DRAINAGE PLAN
3	LEACHATE TRANSPORT LINE TO GAUD
4	INTERNAL DRAINAGE
5	2017 PHASE 1/PHASE 2 NORTH AS-BUILTS
6	MONITORING WELL LOCATIONS AND ELEVATIONS
7	DETAILS

PREPARED BY:

Integrated  
 Waste  
Solutions, Inc.  
19 Joseph Drive  
Sidney, Maine 04330



SCALE: 1"=50'

0 50 100 150 200 FEET

CONTOUR INTERVAL: 2'  
 VERTICAL DATUM: N.G.V.D. 1929  
 HORIZONTAL DATUM: SITE SPECIFIC  
 DATE MAPPING COMPLETED: 01-22-2007

NOTE:  
 \*LOCATION AND ELEVATION DATA FOR MH 1, 2, 3, 4, 5, 8, 9, TERMINUS MH, CLEANOUT MH, WET WELL, DRY WELL, 24" HDPE CULVERT INVERTS AND OTHER EXPOSED PIPES WAS PROVIDED BY SACKETT & BRAKE SURVEY, INC. OF SKOWHEGAN, MAINE. INTEGRATED WASTE SOLUTIONS, INC. OBTAINED SOME ADDITIONAL FIELD PIPE / FLOAT ELEVATION DATA FOR MH 8, 9 AND THE WET WELL. MH 6 AND 7 INFORMATION AND OTHER BASAL DRAINAGE INFORMATION WAS OBTAINED FROM INTEGRATED WASTE SOLUTIONS, INC. COMPILATION OF DESIGN DRAWINGS, CONSTRUCTION DRAWINGS AND FIELD SKETCHES. ENGINEERING JUDGEMENT WAS USED TO INTERPRET CONFLICTING INFORMATION.\*

PREPARED BY: AERIAL SURVEY & PHOTO, INC.  
 NORRIDGEWOCK, MAINE

EXISTING GROUND CONTROL UTILIZED:  
 NOTE: AREAS WITHIN TREE COVER ARE APPROXIMATE & MAY REPRESENT FORM LINES ONLY.  
 DATE OF PHOTOGRAPHY: 12-22-2006

MANHOLE	RIM. ELEV.	INVERT OUT	INVERT IN	SUMP
MH No. 6	BURIED	NOT KNOWN	81' (ORIGINAL CONSTR. DWGS.)	NOT KNOWN
MH No. 7	BURIED	83.5' (ORIGINAL CONSTR. DWGS.)	NOT KNOWN	NOT KNOWN
MH No. 8 (VALVE MH)	100.49'	94.0'	① 3" FLEX HOSE PIPE ② 6" PVC 93.96' ③ 4" PVC 94.16'	93.5'
MH No. 9 (POND MH)	137.35	96.54' 6" PVC 122.82'	① 8" PVC 108.74' ② 6" PVC 96.54' ③ 6" PVC 96.54'	95.2'
WET WELL	94.62'	N/A (FORCE MAIN)	① 77.59' ② 78.24'	73.1'
DRY WELL	89.06'	TOP OF FORCE MAIN PIPE 80.55'		79.4'
WETLANDS MH	127.61'	6" PVC 119.15'	6" PVC 119.27'	

LEGEND:  
 ● MANHOLE

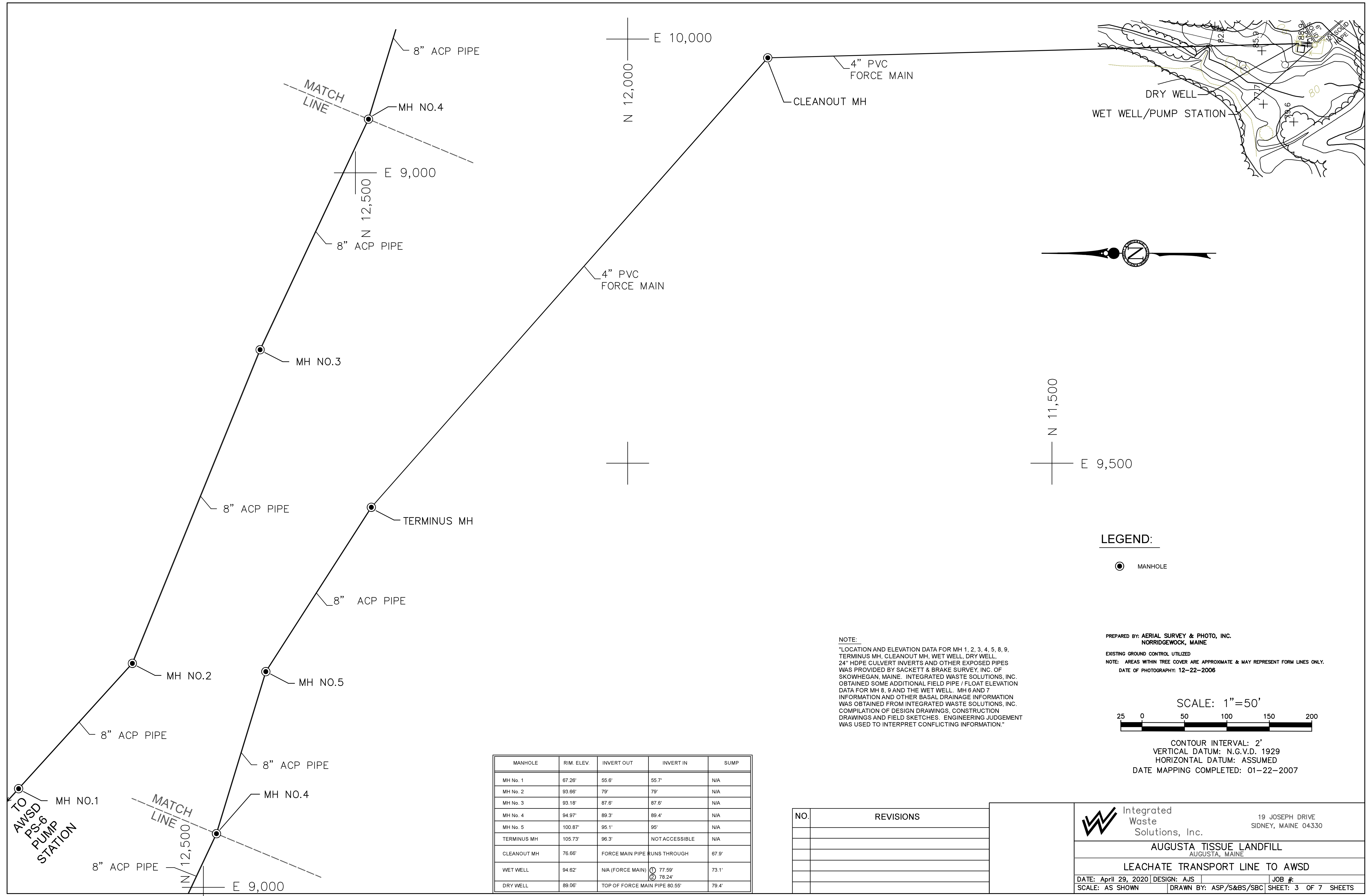
NO.	REVISIONS
1	CORRECTED MH NO. 9 RIM ELEVATION

**Integrated Waste Solutions, Inc.**  
 19 JOSEPH DRIVE  
 SIDNEY, MAINE 04330

**AUGUSTA TISSUE LANDFILL  
 AUGUSTA, MAINE**

**BASE DRAINAGE**

DATE: April 29, 2020 | DESIGN: AJS | JOB #:  
 SCALE: AS SHOWN | DRAWN BY: ASP/S&BS/SBC | SHEET: 2 OF 7 SHEETS

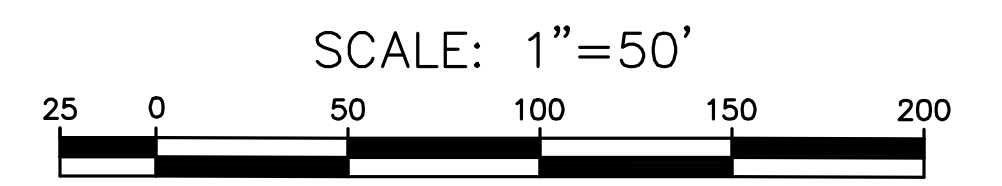


**LEGEND:**

● MANHOLE

**NOTE:**  
 \*LOCATION AND ELEVATION DATA FOR MH 1, 2, 3, 4, 5, 8, 9, TERMINUS MH, CLEANOUT MH, WET WELL, DRY WELL, 24" HDPE CULVERT INVERTS AND OTHER EXPOSED PIPES WAS PROVIDED BY SACKETT & BRAKE SURVEY, INC. OF SKOWHEGAN, MAINE. INTEGRATED WASTE SOLUTIONS, INC. OBTAINED SOME ADDITIONAL FIELD PIPE / FLOAT ELEVATION DATA FOR MH 8, 9 AND THE WET WELL. MH 6 AND 7 INFORMATION AND OTHER BASAL DRAINAGE INFORMATION WAS OBTAINED FROM INTEGRATED WASTE SOLUTIONS, INC. COMPILED DESIGN DRAWINGS, CONSTRUCTION DRAWINGS AND FIELD SKETCHES. ENGINEERING JUDGEMENT WAS USED TO INTERPRET CONFLICTING INFORMATION.\*


PREPARED BY: AERIAL SURVEY & PHOTO, INC.  
 NORRIDGEWOCK, MAINE  
 EXISTING GROUND CONTROL UTILIZED  
 NOTE: AREAS WITHIN TREE COVER ARE APPROXIMATE & MAY REPRESENT FORM LINES ONLY.  
 DATE OF PHOTOGRAPHY: 12-22-2006

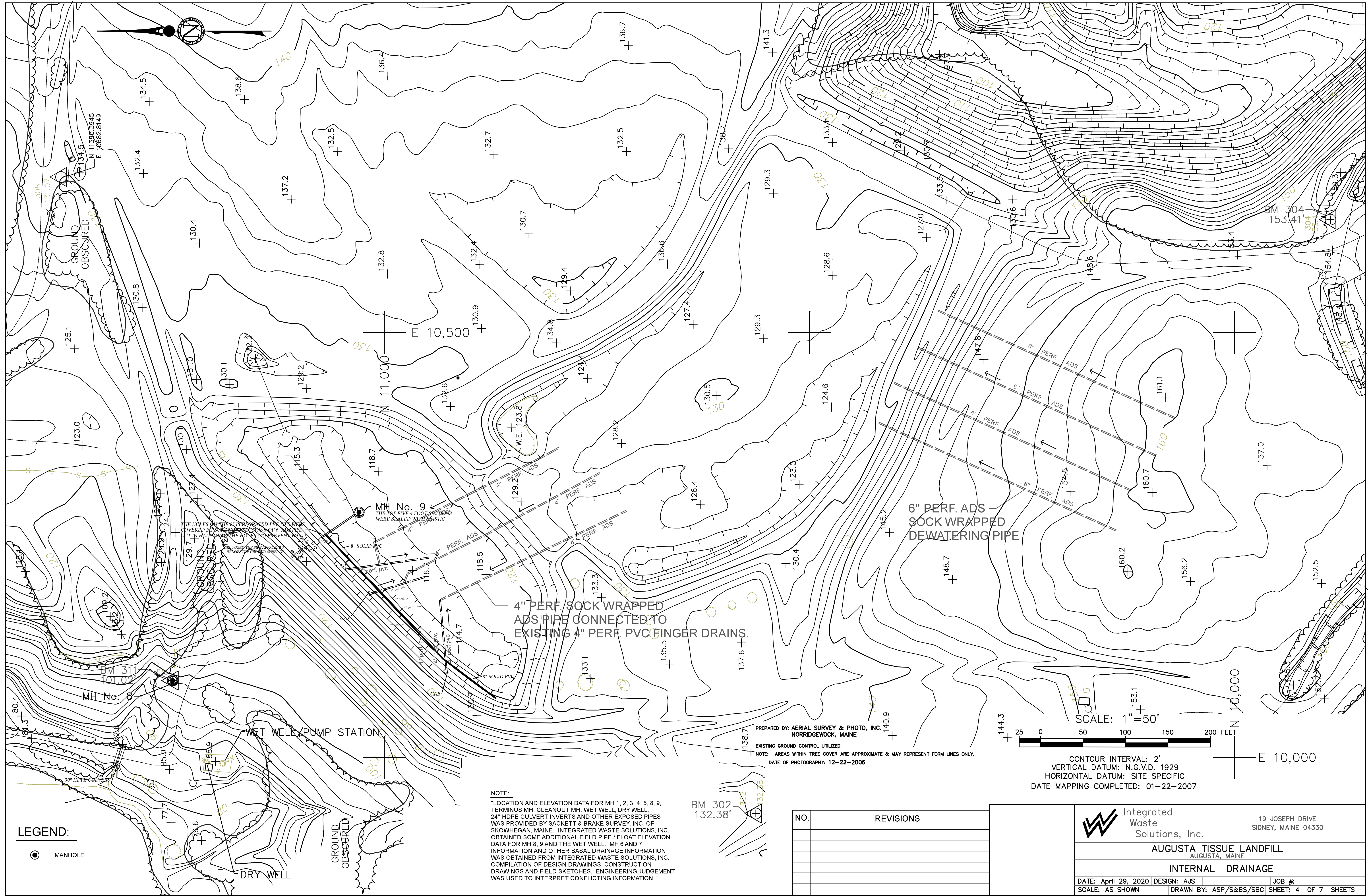


CONTOUR INTERVAL: 2'  
 VERTICAL DATUM: N.G.V.D. 1929  
 HORIZONTAL DATUM: ASSUMED  
 DATE MAPPING COMPLETED: 01-22-2007

MANHOLE	RIM. ELEV.	INVERT OUT	INVERT IN	SUMP
MH No. 1	67.26'	55.6'	55.7'	N/A
MH No. 2	93.66'	79'	79'	N/A
MH No. 3	93.18'	87.6'	87.6'	N/A
MH No. 4	94.97'	89.3'	89.4'	N/A
MH No. 5	100.87'	95.1'	95'	N/A
TERMINUS MH	105.73'	96.3'	NOT ACCESSIBLE	N/A
CLEANOUT MH	76.66'	FORCE MAIN PIPE RUNS THROUGH		67.9'
WET WELL	94.62'	N/A (FORCE MAIN)	① 77.59' ② 76.24'	73.1'
DRY WELL	89.06'	TOP OF FORCE MAIN PIPE 80.55'		79.4'

NO.	REVISIONS


 Integrated Waste Solutions, Inc.  
 19 JOSEPH DRIVE  
 SIDNEY, MAINE 04330  
**AUGUSTA TISSUE LANDFILL**  
 AUGUSTA, MAINE  
**LEACHATE TRANSPORT LINE TO AWS&D**  
 DATE: April 29, 2020 | DESIGN: AJS | JOB #:  
 SCALE: AS SHOWN | DRAWN BY: ASP/S&BS/SBC | SHEET: 3 OF 7 SHEETS



**LEGEND:**

● MANHOLE

○ DRY WELL

⊘ GROUND  
OBSERVED

**NOTE:**  
 \*LOCATION AND ELEVATION DATA FOR MH 1, 2, 3, 4, 5, 8, 9, TERMINUS MH, CLEANOUT MH, WET WELL, DRY WELL, 24" HDPE CULVERT INVERTS AND OTHER EXPOSED PIPES WAS PROVIDED BY SACKETT & BRAKE SURVEY, INC. OF SKOWHEGAN, MAINE. INTEGRATED WASTE SOLUTIONS, INC. OBTAINED SOME ADDITIONAL FIELD PIPE / FLOAT ELEVATION DATA FOR MH 8, 9 AND THE WET WELL. MH 6 AND 7 INFORMATION AND OTHER BASAL DRAINAGE INFORMATION WAS OBTAINED FROM INTEGRATED WASTE SOLUTIONS, INC. COMPILATION OF DESIGN DRAWINGS, CONSTRUCTION DRAWINGS AND FIELD SKETCHES. ENGINEERING JUDGEMENT WAS USED TO INTERPRET CONFLICTING INFORMATION.\*

PREPARED BY: AERIAL SURVEY & PHOTO, INC.  
 NORRIDGEWOCK, MAINE  
 EXISTING GROUND CONTROL UTILIZED  
 NOTE: AREAS WITHIN TREE COVER ARE APPROXIMATE & MAY REPRESENT FORM LINES ONLY.  
 DATE OF PHOTOGRAPHY: 12-22-2006

SCALE: 1" = 50'  
 25 0 50 100 150 200 FEET  
 CONTOUR INTERVAL: 2'  
 VERTICAL DATUM: N.G.V.D. 1929  
 HORIZONTAL DATUM: SITE SPECIFIC  
 DATE MAPPING COMPLETED: 01-22-2007

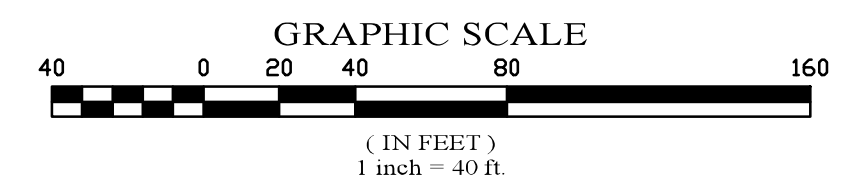
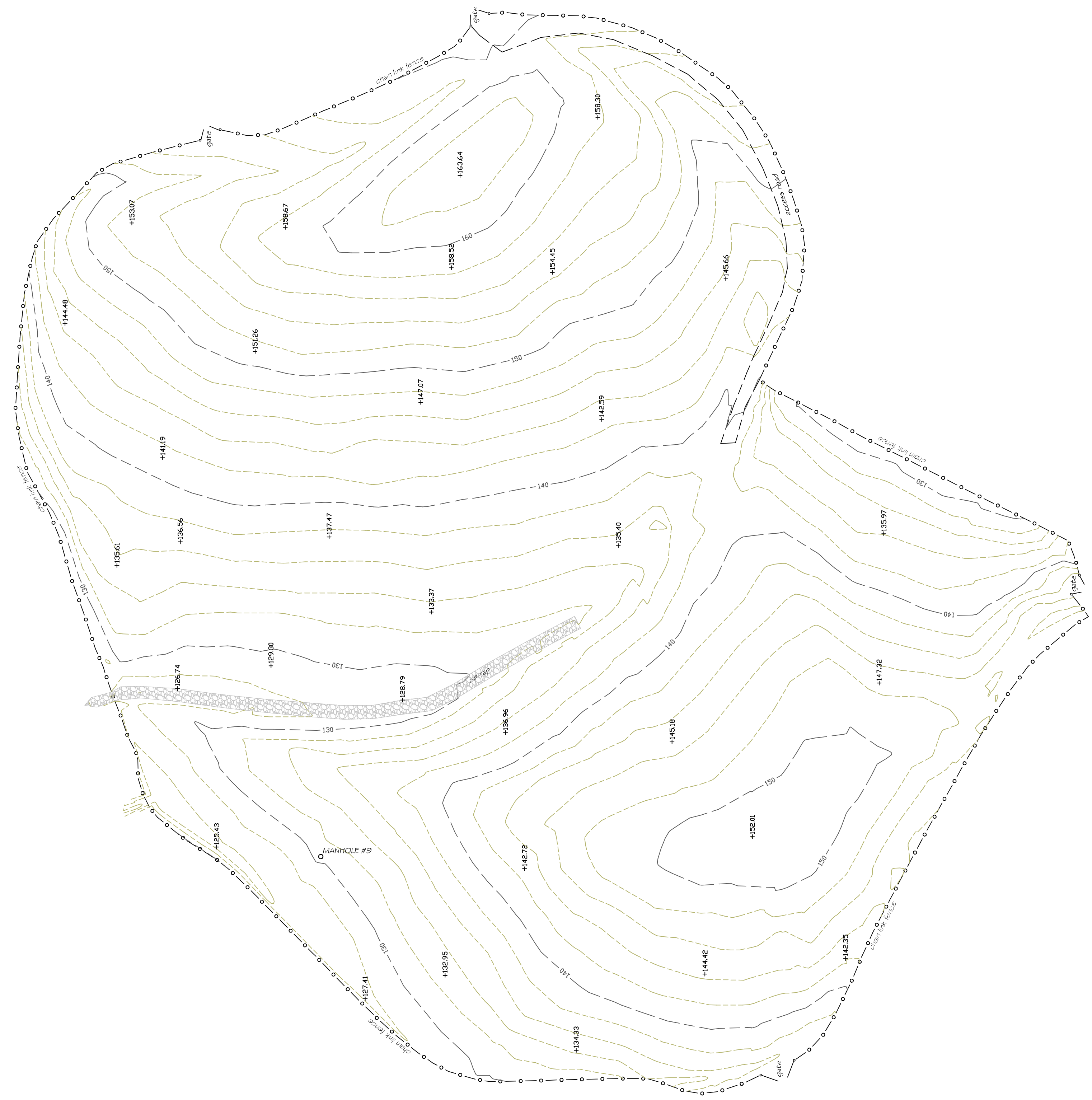
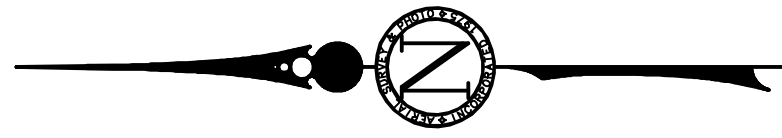
NO.	REVISIONS

Integrated Waste Solutions, Inc.  
 19 JOSEPH DRIVE  
 SIDNEY, MAINE 04330

**AUGUSTA TISSUE LANDFILL**  
 AUGUSTA, MAINE

**INTERNAL DRAINAGE**

DATE: April 29, 2020 | DESIGN: AJS | JOB #:  
 SCALE: AS SHOWN | DRAWN BY: ASP/S&BS/SBC | SHEET: 4 OF 7 SHEETS



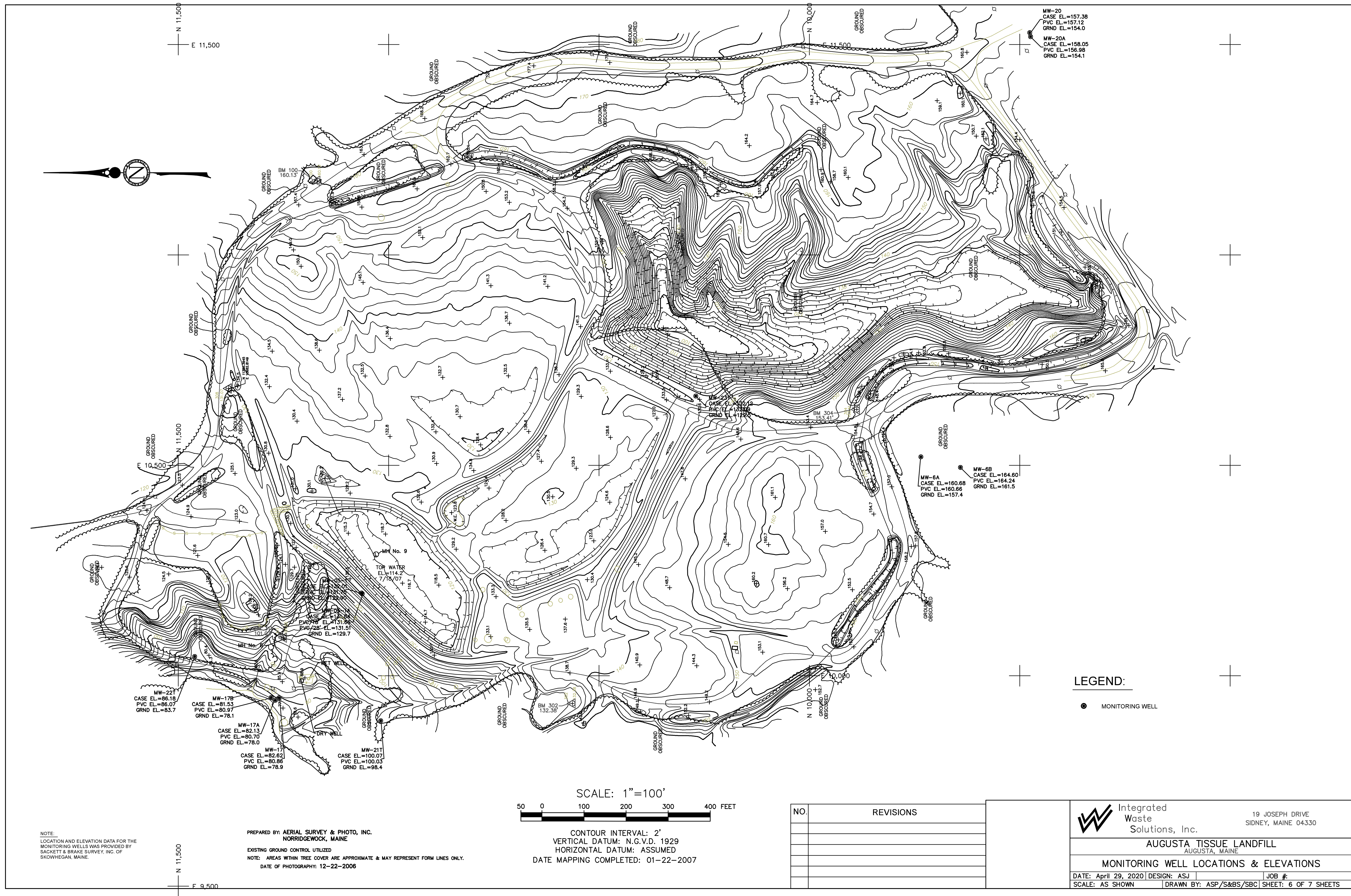
NO.	REVISIONS

**Integrated Waste Solutions, Inc.**  
 19 JOSEPH DRIVE  
 SIDNEY, MAINE 04330

**AUGUSTA TISSUE LANDFILL**  
 AUGUSTA, MAINE

**2017 PHASE 1/PHASE 2 NORTH AS-BUILTS**

DATE: April 29, 2020 | DESIGN: AJS | JOB #:  
 SCALE: AS SHOWN | DRAWN BY: ASP/S&BS/SBC | SHEET: 5 OF 7 SHEETS



MW-20  
CASE EL.=157.38  
PVC EL.=157.12  
GRND EL.=154.0

MW-20A  
CASE EL.=158.05  
PVC EL.=156.98  
GRND EL.=154.1

MW-6A  
CASE EL.=160.68  
PVC EL.=160.66  
GRND EL.=157.4

MW-6B  
CASE EL.=164.60  
PVC EL.=164.24  
GRND EL.=161.5

MW-221  
CASE EL.=86.18  
PVC EL.=86.07  
GRND EL.=83.7

MW-178  
CASE EL.=81.53  
PVC EL.=80.97  
GRND EL.=78.1

MW-17A  
CASE EL.=82.13  
PVC EL.=80.70  
GRND EL.=78.0

MW-17  
CASE EL.=82.62  
PVC EL.=80.86  
GRND EL.=78.9

MW-211  
CASE EL.=100.07  
PVC EL.=100.03  
GRND EL.=98.4

**LEGEND:**

● MONITORING WELL

SCALE: 1"=100'

50 0 100 200 300 400 FEET

CONTOUR INTERVAL: 2'  
VERTICAL DATUM: N.G.V.D. 1929  
HORIZONTAL DATUM: ASSUMED  
DATE MAPPING COMPLETED: 01-22-2007

NOTE:  
LOCATION AND ELEVATION DATA FOR THE  
MONITORING WELLS WAS PROVIDED BY  
SACKETT & BRAKE SURVEY, INC. OF  
SKOWHEGAN, MAINE.

PREPARED BY: AERIAL SURVEY & PHOTO, INC.  
NORRIDGEWOCK, MAINE

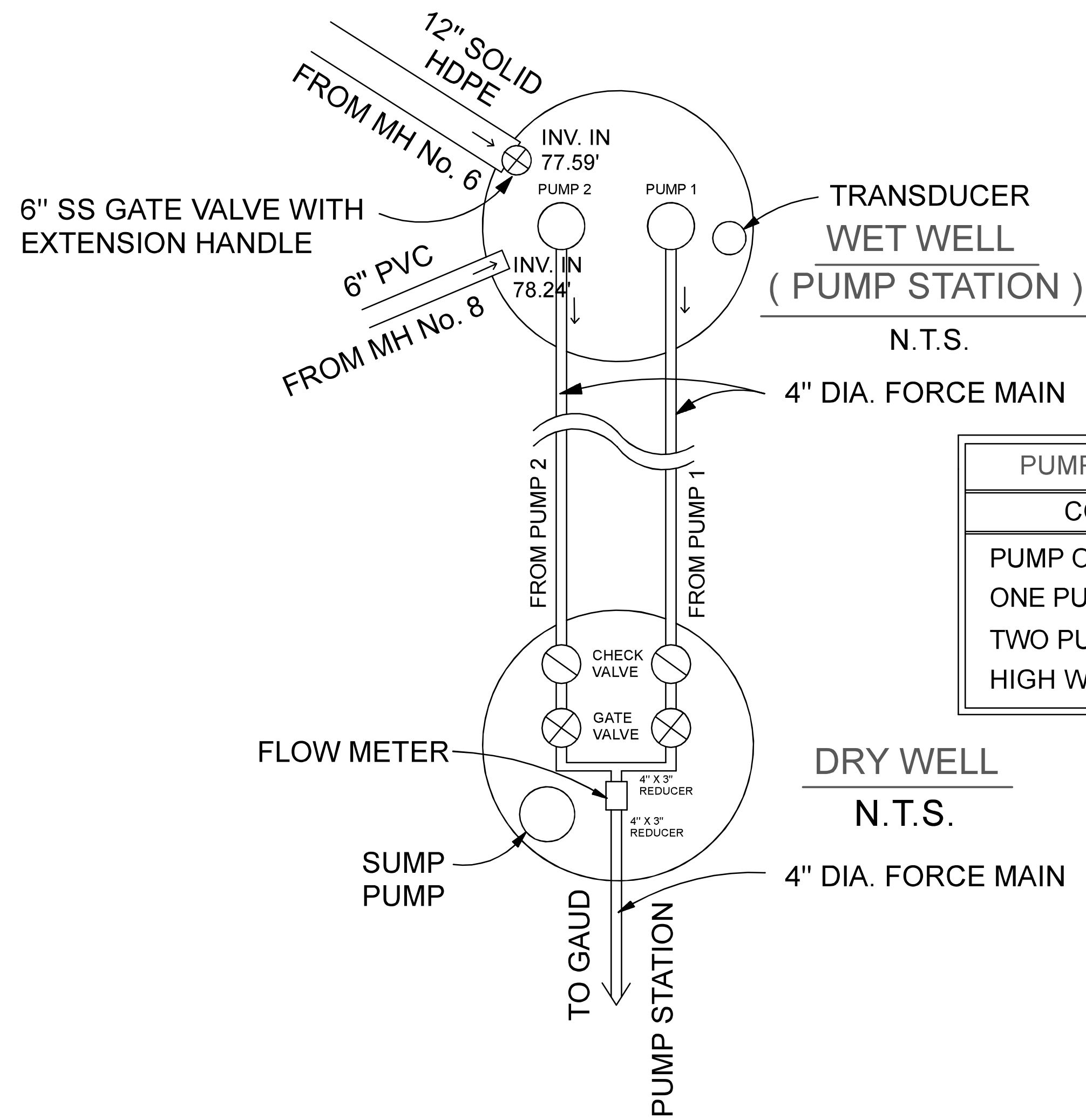
EXISTING GROUND CONTROL UTILIZED  
NOTE: AREAS WITHIN TREE COVER ARE APPROXIMATE & MAY REPRESENT FORM LINES ONLY.  
DATE OF PHOTOGRAPHY: 12-22-2006

NO.	REVISIONS

	Integrated Waste Solutions, Inc. 19 JOSEPH DRIVE SIDNEY, MAINE 04330
	<b>AUGUSTA TISSUE LANDFILL</b> AUGUSTA, MAINE
<b>MONITORING WELL LOCATIONS &amp; ELEVATIONS</b>	
DATE: April 29, 2020   DESIGN: ASJ	JOB #:
SCALE: AS SHOWN	DRAWN BY: ASP/S&BS/SBC   SHEET: 6 OF 7 SHEETS

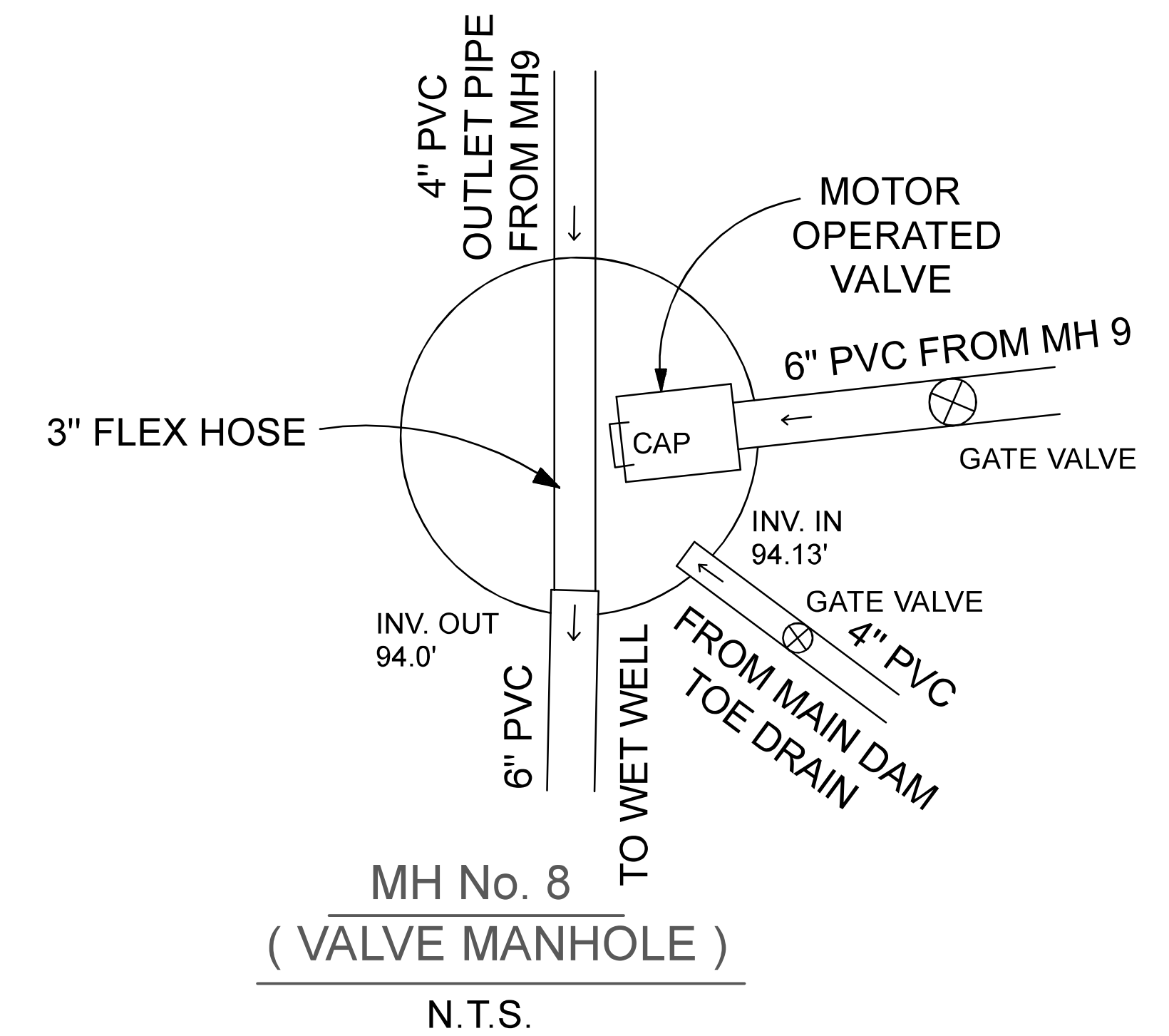
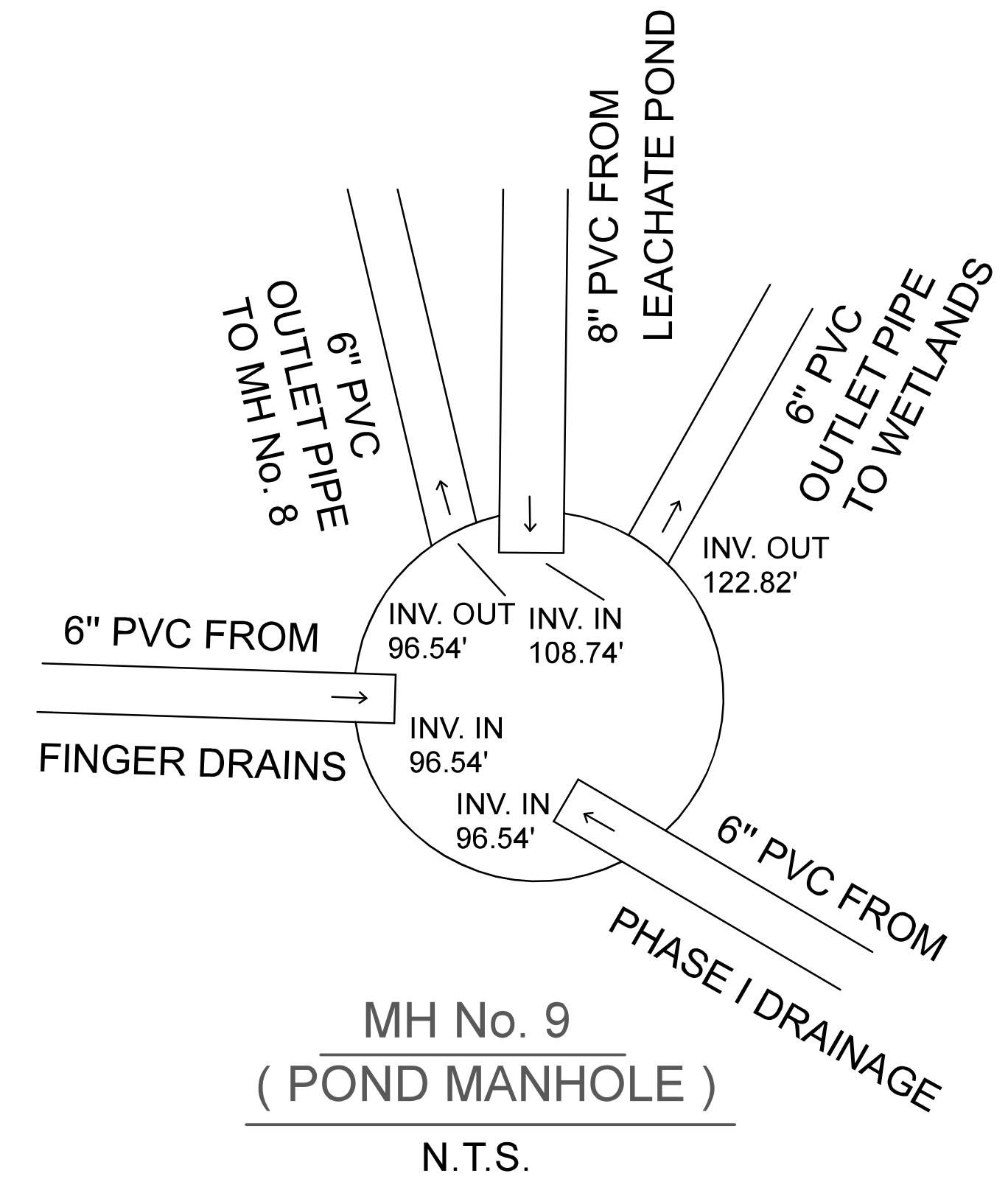
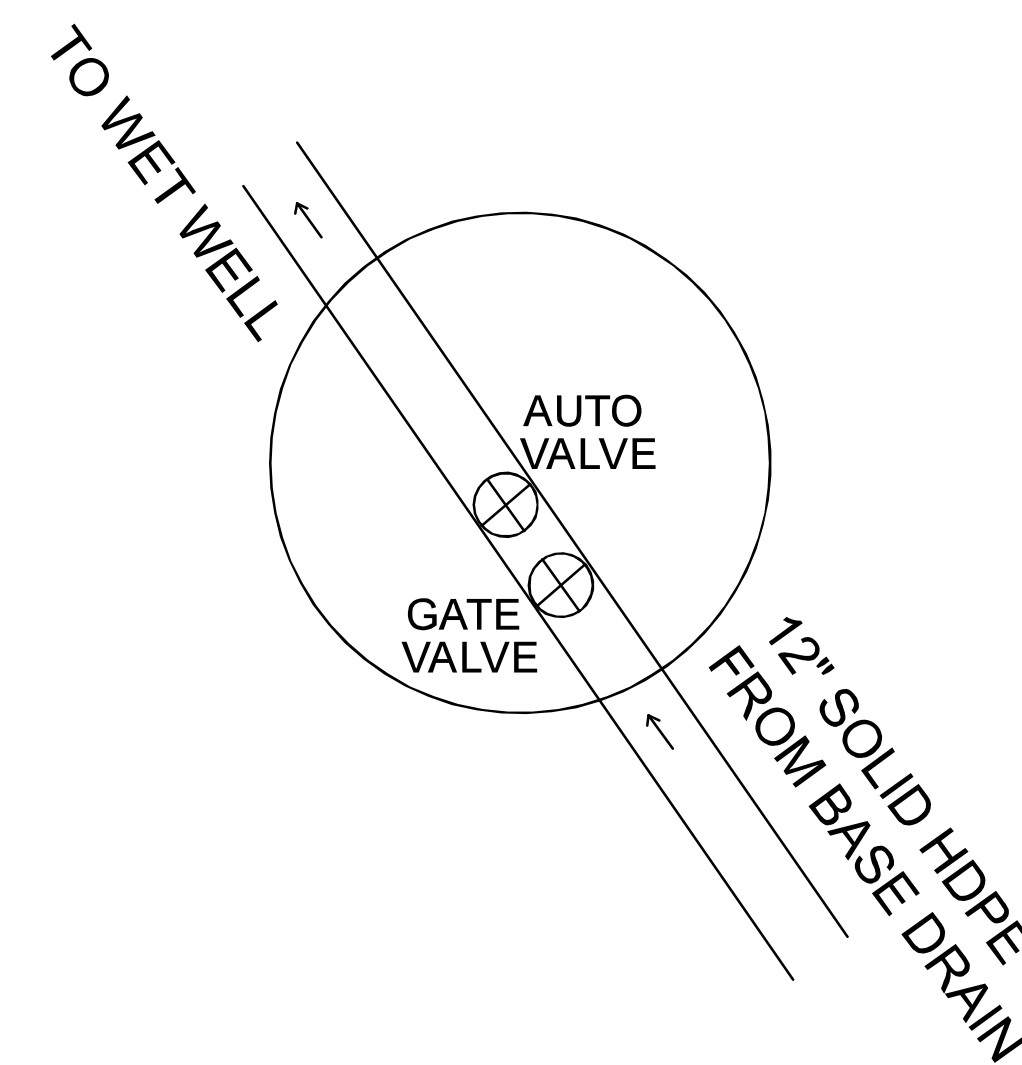
PUMP No. 2 ( WET WELL )  
 BARNES MODEL SEH-501, 5HP  
 230V, 39.0 AMP, SINGLE PHASE  
 1750 RPM  
 S/N 53091-079-128, UNIT 22684

PUMP No. 1 ( WET WELL )  
 BARNES MODEL 4SE-HL, 7.5HP  
 230V, 39.0 AMP, SINGLE PHASE  
 1150 RPM  
 S/N T1305788



PUMP STATION FLOAT CONTROLS	
CONDITION	ELEVATION
PUMP OFF	76.09'
ONE PUMP ON	76.49'
TWO PUMPS ON	78.32'
HIGH WET WELL LEVEL	79.08'

NEW MH (INSTALLED IN 2008)



NOTE: PUMP STATION FLOAT CONTROL ELEVATIONS WERE PROVIDED BY SACKETT & BRAKE SURVEY, INC.

NO.	REVISIONS

Integrated Waste Solutions, Inc.  
 19 JOSEPH DRIVE  
 SIDNEY, MAINE 04330

AUGUSTA TISSUE LANDFILL  
 AUGUSTA, MAINE

DETAILS

DATE: April 29, 2020 DESIGN: AJS JOB #:  
 SCALE: AS SHOWN DRAWN BY: ASP/S&BS/SBC SHEET: 7 OF 7 SHEETS