

GULF OF MAINE
WATERSHEDS ONLY

ANADROMOUS FISH STREAMS OF NEW ENGLAND

UPSTREAM MIGRATORY ROUTES Portfolio NE-1

SEPTEMBER 1982

EDITORS

Alfred Eipper
William Knapp
Curtis Laffin



U.S. DEPARTMENT OF THE INTERIOR
FISH AND WILDLIFE SERVICE
One Gateway Center, Suite 700
Newton Corner, Massachusetts 02158



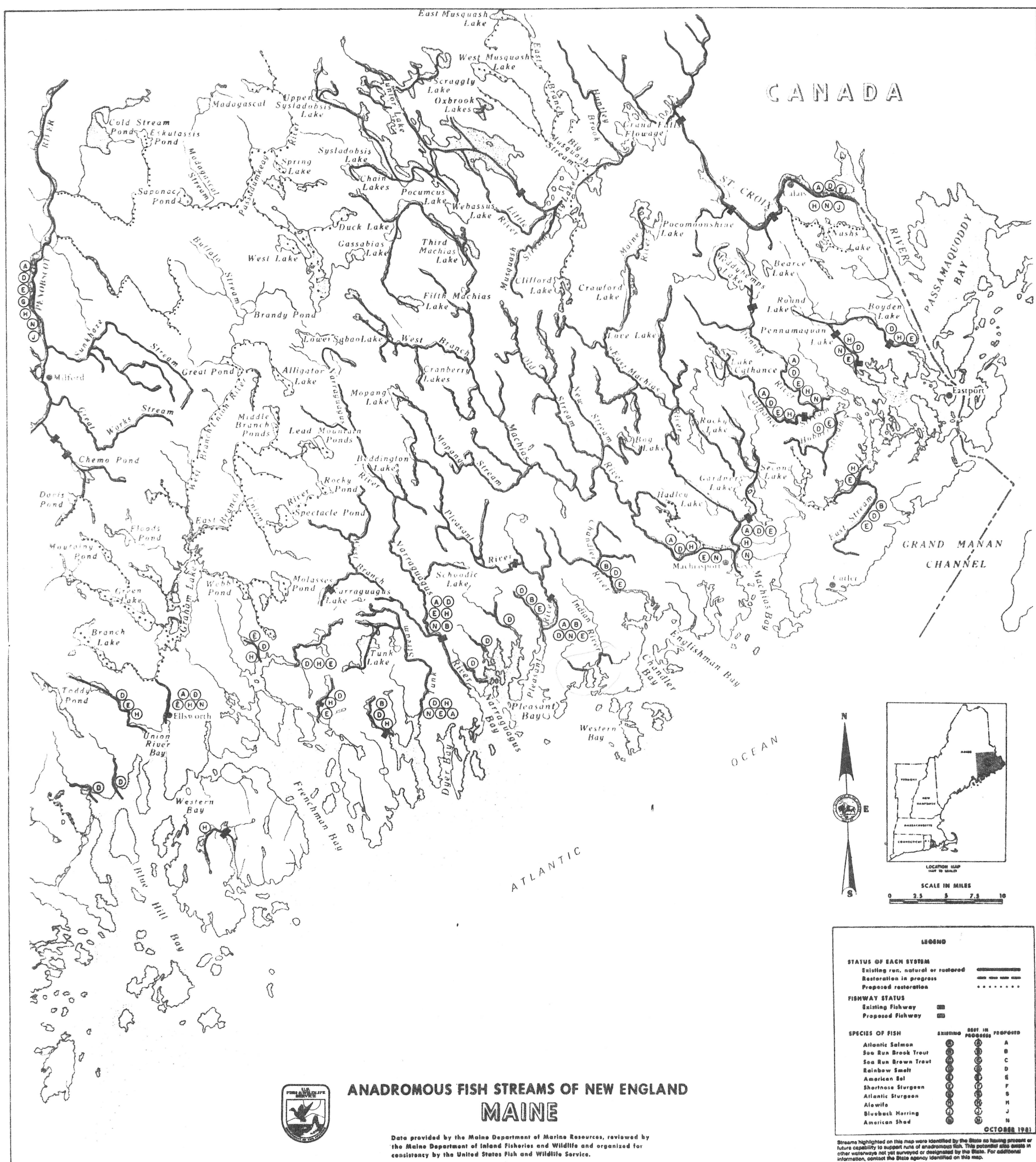
EXPLANATORY NOTES

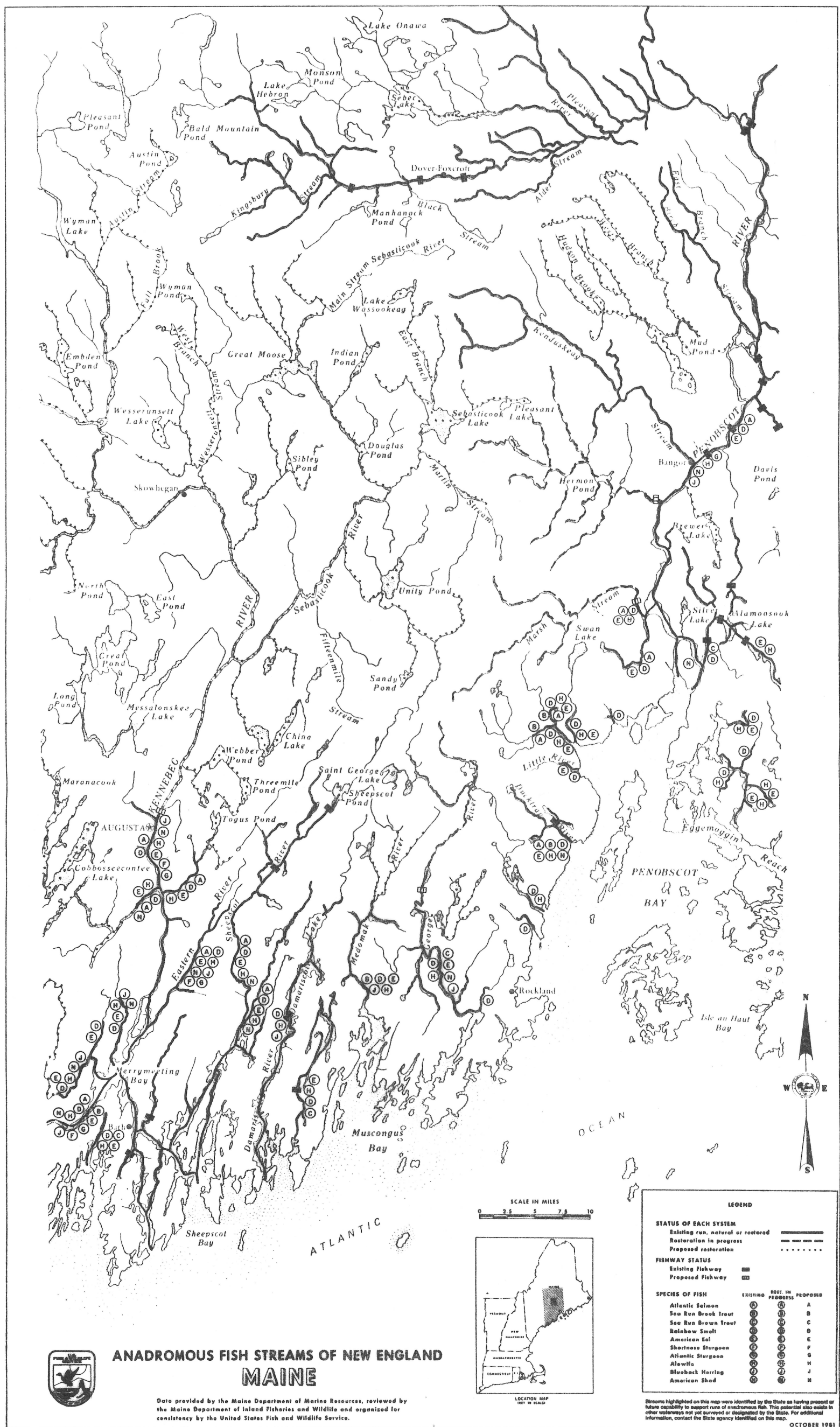
The bold-faced red letters that appear on this map identify routes used by individual species of anadromous fish during their upstream migrations. This use can be existing, under development or proposed, as indicated by the completeness of the circle around each letter. The status of use can differ among species that travel the same migratory route. Similarly, the status of use by any one species can change at different locations along a river or within a drainage basin, as for example, may occur when adult fish are being transplanted or introduced at different locations within a watershed. The completeness of the red line along each migratory route reflects the general status of use by most of the species that move upstream. Species code letters do not represent the use of a river or stream for spawning, rearing or any life function other than upstream migration.

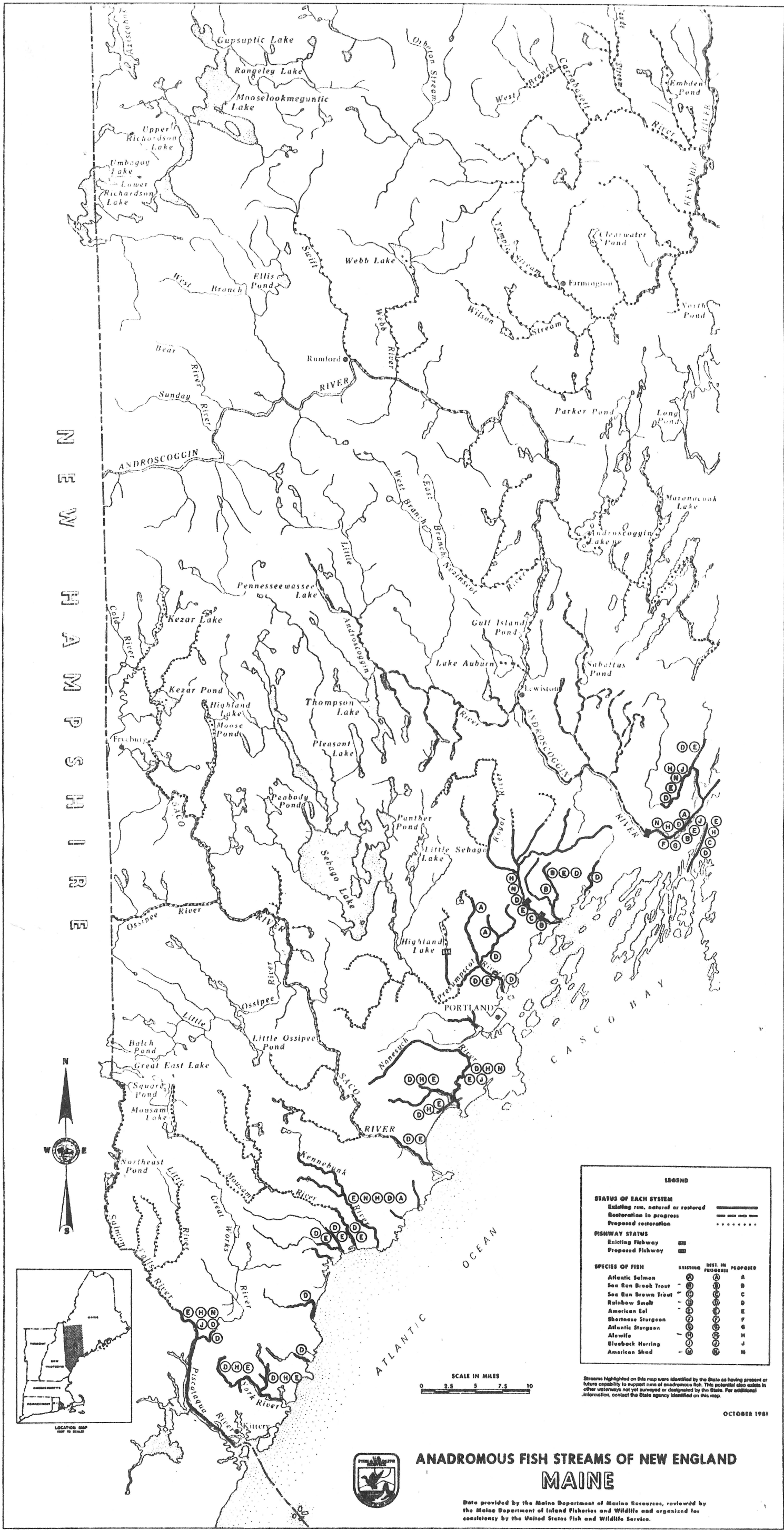
The occurrence of a completely-encircled code letter downstream, but not upstream, delimits the general extent of upstream migration. This limit may change yearly or, in some cases, may not be known precisely. Code letters that appear upstream of braided or bifurcated streams or rivers do not necessarily imply use of the entire downstream drainage as a migratory corridor. Actual routes of migration have been identified wherever information permits.

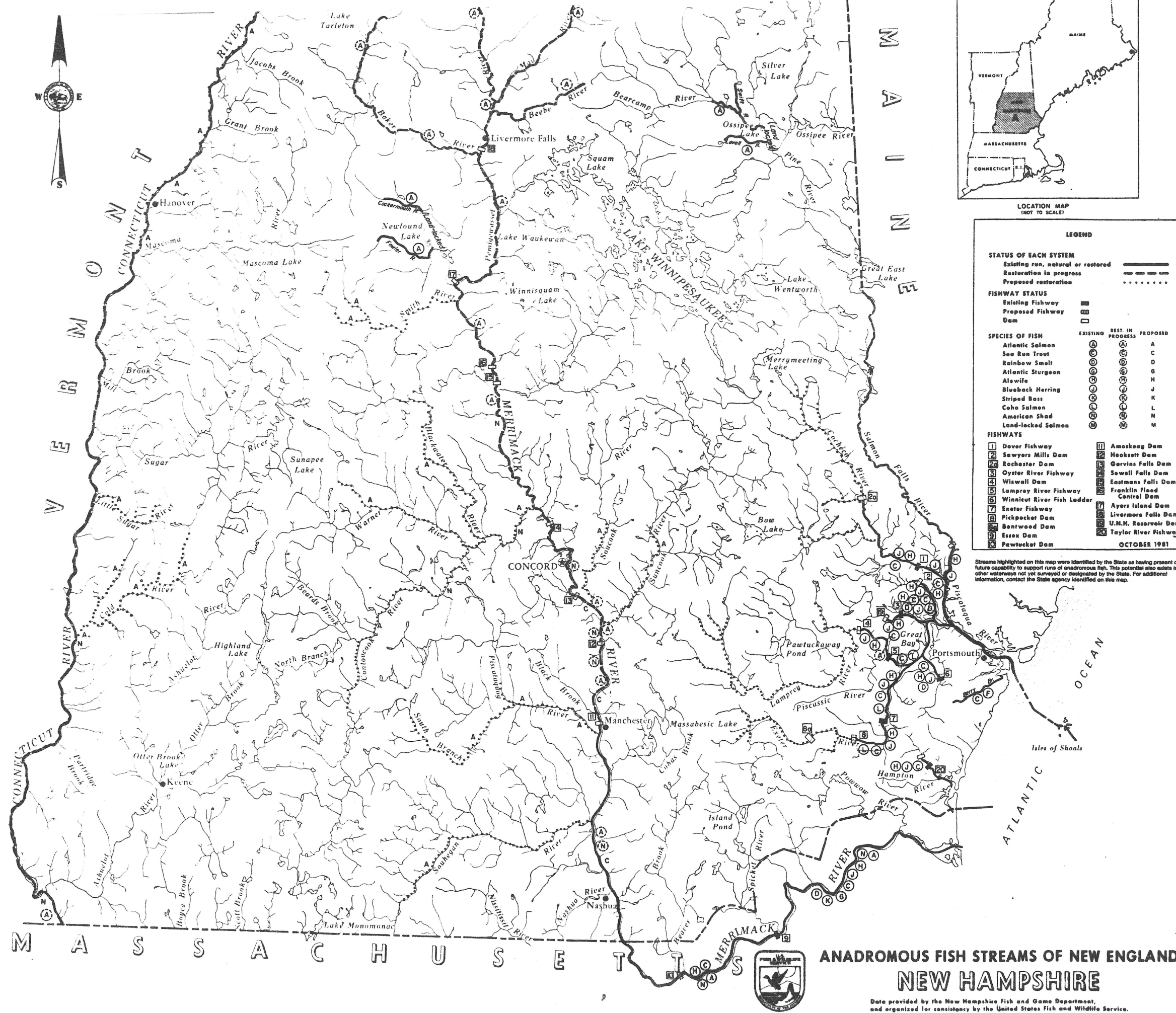
Not all dams or fishways are shown on this map. Only those highlighted by a state fish and wildlife agency have been depicted.

This map can easily be adapted to reflect the emergence of new information, progress in efforts to restore or introduce runs of anadromous fish, and changes in fishery management plans. Symbols used to depict general migratory routes, the status of individual species, and fishways can readily be modified. Appropriate code letters can be added along rivers as other species may be introduced or restored. Circles can be drawn or closed around code letters as restoration or introduction proceeds. Fishway symbols can be added or completed as fish passage plans are modified or accomplished. The Northeast Regional Office of The U.S. Fish and Wildlife Service should be advised of these changes, so that this map can be periodically updated.



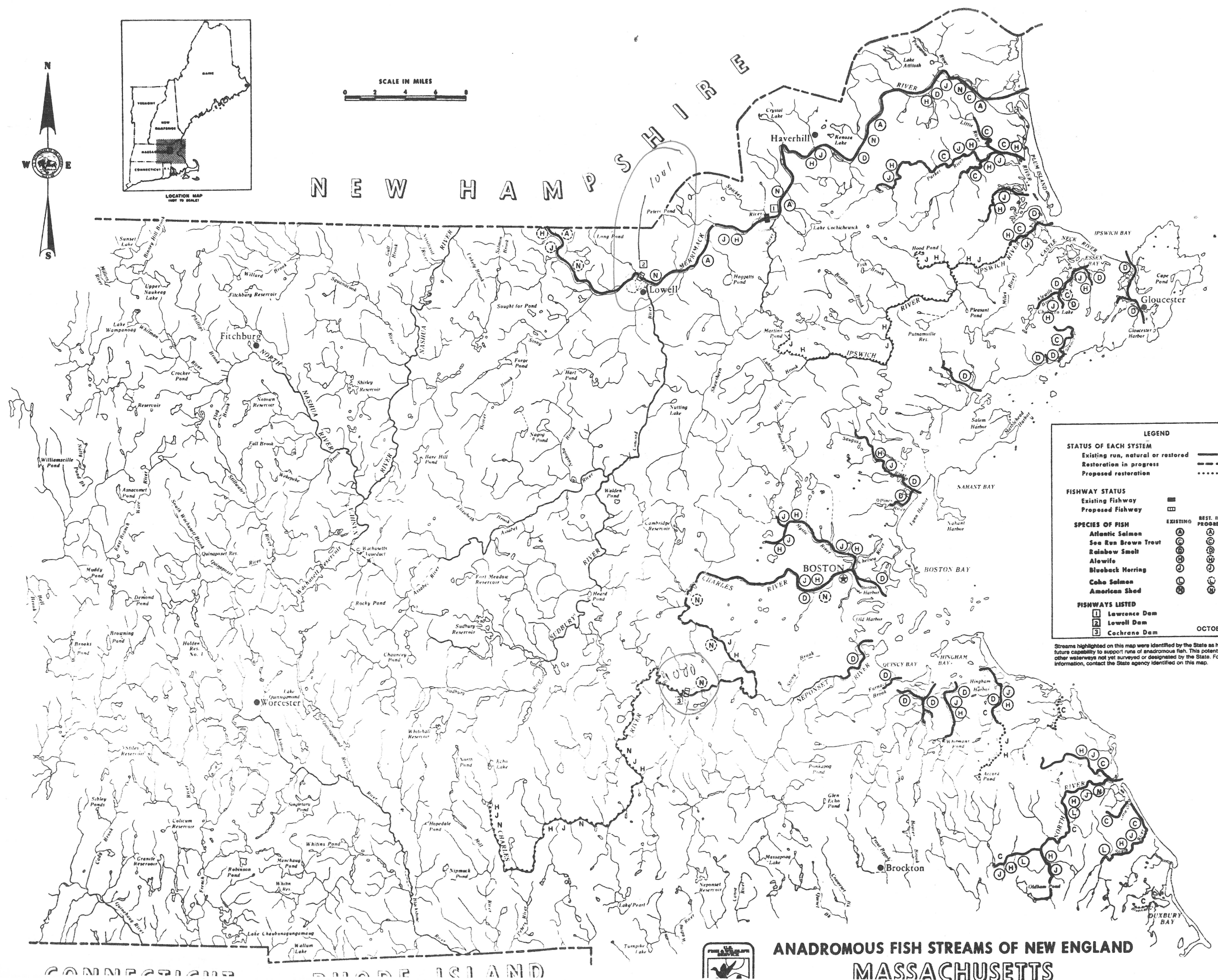
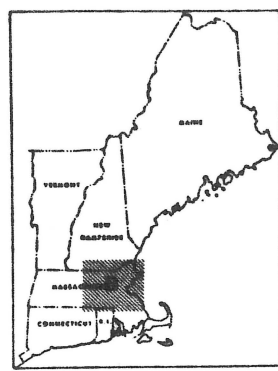






ANADROMOUS FISH STREAMS OF NEW ENGLAND NEW HAMPSHIRE

Data provided by the New Hampshire Fish and Game Department,
and organized for consistency by the United States Fish and Wildlife Service.



LEGEND

STATUS OF EACH SYSTEM

Existing run, natural or restored —————

Restoration in progress - - - - -

Proposed restoration

FISHWAY STATUS

Existing Fishway [solid line]

Proposed Fishway [dashed line]

SPECIES OF FISH

	EXISTING	REST. IN PROGRESS	PROPOSED
Atlantic Salmon	A	A	A
Sea Run Brown Trout	C	C	C
Rainbow Smelt	D	D	D
Alwife	H	H	H
Blueback Herring	J	J	J
Coho Salmon	L	L	L
American Shad	N	N	N

FISHWAYS LISTED

1 Lawrence Dam

2 Lowell Dam

3 Cochran Dam

OCTOBER 1981

Streams highlighted on this map were identified by the State as having present or future capability to support runs of anadromous fish. This potential also exists in other waterways not yet surveyed or designated by the State. For additional information, contact the State agency identified on this map.

**ANADROMOUS FISH STREAMS OF NEW ENGLAND
MASSACHUSETTS**

