

Edith Cornwall

289 Brickett Point Estates, Oakland, ME 04963
edined@roadrunner.com

January 24, 2025

Attn: Ronald Mongeon, Presiding Officer & Eastern Maine Regional Office Director
Maine Department of Environmental Protection
106 Hogan Road Bangor, ME 04401
Ronald.Mongeon@maine.gov

In Re: Petition to set Water Level/Minimum Flow
of North Pond, Smithfield, Mercer and Rome, Maine
DEP # L-30629-36-A-N, in the Towns of Smithfield, Mercer and Rome

East Pond, located in Smithfield and Oakland, Maine being a part of the Kennebec River Basin, is the first of the 7 lakes known as the Belgrade Lakes. East Pond covers 1,717 acres with a mean depth of 18 ft. and maximum depth of 27 ft. (Lake Stewards of Maine, data from ME DEP, IF&W and Office of GIS). East Pond has no major inlet sources, takes 2.5 years to flush and empties through the Serpentine, a 2.86 mile stream meandering through a floating bog which flows into Old Mill Stream past Sunset Cottages and into North Pond.

In 1947 Central Maine Power Company (CMP) began construction of the present day concrete and earthen dam on the East Pond outlet stream to replace the previous wooden dams. The East Pond Association (EPA) was formed on July 28, 1948 and in 1949 the new dam was dedicated as the Coffin Dam, honoring Everett Coffin, a member of the original East Pond Dam Committee who died during the preliminary work on the dam. Since 1949 the EPA has paid the annual taxes for the dam to the town of Smithfield and paid for all of the Coffin Dam repairs.

By 1995 the DEP had classified East Pond as a sensitive lake to phosphorus loading which could cause algal blooms.

As stated in:

EAST POND
Somerset and Kennebec Counties
Total MAXIMUM DAILY (ANNUAL) LOAD
Final Lakes TMDL Report
DEPLW 2001 – 10
Maine Department of Environmental Protection
6 September 2001

Page 5 ***“East Pond (698 hectares) is a relatively shallow, wind-driven, slow-flushing, spring-fed groundwater seepage lake with no permanent flowing inlets and a single outlet - Serpentine Stream”.*** ***“Colby College (Waterville) has studied and characterized the East Pond and Serpentine Stream watershed (land use) both in 1991 and 1999, relative to existing water quality, algae blooms, and suggested strategies for remediation”.***

“Historical vs. Current Water Quality – the water quality of East Pond has deteriorated over the past decade – with intense blue-green nuisance algae blooms prevalent during the summers of 1993-1995 and 1998-99.” ***“A combination of internal (sediment) and external (watershed/shoreline) sources account for the in-lake nutrient (total phosphorus) loadings.”*** (Exhibit A – TMDL Summary Overview)

Our dam management plan since 1997 has been to close at least one gate on Memorial Day as it is essential that we capture water in the spring to maintain an adequate level in East Pond for access at the Public Boat Launch, navigation, recreation, private water supplies, and fishing. It is also extremely important to maintain a stable water level during the loon's breeding season of May and June. Loons are extremely awkward on land and nest in quiet, protected areas close to the shore. We attempt to keep some water flowing over the dam during the perch spawning period.

Due to the recurring algal blooms, the EPA researched numerous worldwide remediation methods prior to 2018. A biomanipulation project was conducted over several years with minimal algae bloom changes. Prior to making the final decision to proceed with a very expensive Alum Treatment, the EPA, with the help of 7 Lakes Alliance, hired Dr. Kenneth J. Wagner of Water Resource Services, Inc. to review East Pond's more than 20 years of data collected by Colby College, data from the Maine Department of Environmental Protection (DEP) and from East Pond's Lake Monitors. The final decision was to follow the scientific recommendations of Mr. Wagner and proceed with an Alum Treatment.

Coffin Dam has 2 aluminum 12 inch high boards each 10 feet long with a 2 inch by 5 inch opening on both ends of the boards. They sit side by side on the crest of the dam allowing control of only 12 inches of water from 263 to 264 ft. mean sea level (msl). (Exhibit B – Pictures of Coffin Dam) SOLitude Lake Management was hired to do the first Alum Treatment on East Pond in June with a second treatment in October of 2018.

The NP Water level/minimum flow petition states under article 4 “In 2018, the East Pond dam was left open in May to lower waters for the purpose of performing maintenance on the dam in August, three months prior. This created abnormally low stagnated warm waters throughout the summer and may have also created our pond's first algae bloom.”

Rob Jones was the President of the EPA in 2018. Unfortunately, he died in January of 2021 following a bout with Covid and a lot of historic EPA documentation was lost. I, Edith Cornwall, President of the EPA today, was the Vice President of the association in 2018. I know Rob Jones filled out a Dam Inspection sheet sometimes but I do not know if he did so each time he visited the dam. I have included the Official EPA Board Minutes of 2018 which provide monthly dam reports for April, June, September and October. (Exhibit C –2018 EPA Board Minutes) The boards of Coffin Dam were NOT OPEN from May until August

as stated in Article 4. The boards were closed as we attempted to maintain a level of water in East Pond that would allow lake access for the large barge owned by SOLitude Lake Management.

It was a very dry summer. (Exhibit D – U S Climate Data – Waterville, ME for May to September of 2018) Even though the boards were closed, the water level at the dam continually dropped so by September the water level was even with the bottom of the boards. **There was no water to flush over the dam.**

Gordon Woods has been the East Pond Dam Keeper since 2011. He fills out a Dam Inspection Sheet when he inspects the dam and always notifies the North Pond (NP) Dam Keeper and the Belgrade Dam Committee about changes to the gates. (Exhibit E – East Pond Coffin Dam Inspection Sheet) The water level normally drops several inches throughout the summer because of lack of rain or evaporation. During recent summer droughts, rocks that we had never seen before became boating hazards. Low water levels made it difficult to launch or remove boats at the Maine IF&W Public Boat Launch on East Pond. **There are times that we just do not have extra water to share.**

The EPA has been following the directions of our Colby College and 7 Lakes Alliance scientists who promote Best Management Practices (BMP) used to reduce the amount of nutrients flowing into our lake. This includes adding buffers or rip rap along shorelines; planting rain gardens; crowning, ditching, adding razor bars or diversion spots and removing berms on roads; etc. We promote the use of the 7 Lakes Alliances Youth Conservation Corps who teaches young people about erosion issues around our lakes and promotes BMPs to youth who may be our future lake residents.

In 2023 the EPA announced that it had been presented the LakeSmart Gold Award which is presented to organizations once 15% of their property owners are LakeSmart. We reached that goal several years ago and now have over 50 LakeSmart properties on East Pond nearing the 25% threshold.

Article 4 also stated that “Early closure also interrupts the spawn of white perch and other fishes.”

Jason Seiders, Maine Department of Inland Fisheries & Wildlife (IF&W) Regional Biologist, and Scott Davis, Maine IF&W Biology Specialist, attended the March 11, 2024 Belgrade Dam Committee meeting. I asked them about the amount of flowing water needed to promote the spawning of white perch in Old Mill Stream which flows from East Pond to North Pond. (Exhibit E - Minutes of the March 11, 2024 Belgrade Area Dam Committee) The minutes from that meeting state that Mr. Seiders and Mr. Davis indicated “*there isn’t much concern with white perch given how prolific they are in the lakes.*” East Pond has a healthy perch population and as previously explained we do not have a constant flow of water into the lake.

A NP resident contacted IF&W in the spring of 2024 complaining that Coffin Dam was closed and therefore the perch were not spawning in Old Mill Stream as they had in the past. In reality, one gate of the dam was closed but the second gate was open and water was freely flowing. Wesley Ashe, Maine IF&W Assistant Regional Biologist, called to ask about our dam management. I assured him that there was water flowing through Coffin Dam. He said that he had already spoken with Jason Seiders and Scott Davis of the Fisheries Department of IF&W and that he agreed with their determination that the white

perch would continue spawning and the fish population was not hindered by our dam management. I invited him to meet me at the Coffin Dam whenever he was in the Smithfield area.

There are numerous seasonal and year round residents along the Serpentine prior to the Coffin Dam. Many of those residents have water lines in the Serpentine. I have been told that sediment is sucked into water lines when the water gets too low in the Serpentine and the potential for frozen pipes increases if it is winter.

The EPA strives to educate the lake community about living within a Maine watershed. We provide information about erosion, phosphorus external loading, the importance of buffers and road maintenance, invasive plants, courtesy boat inspections, LakeSmart and the Youth Conservation Corps. We define terms like duff, rubber razors, rain gardens, BMPs, and encourage participation in 7 Lakes Alliance Courtesy Boat Inspection and Adopt-A-Shore classes. We also strive to be a good neighbor to North Pond by participating as panel members, by attending annual meetings, by diligently trying to prevent invasive plant fragments from entering their water and by communicating with the North Pond Association and the North Pond Dam Keeper.

The East Pond Association's goal is to keep East Pond "Picture Perfect".

I reserve all rights I may have to amend or supplement this testimony.

Respectfully Submitted

This 24th day of January 2025

Edith Cornwall

Edith Cornwall

List of Attached/ Addendum Documents and Witnesses

Expert Witness – Gordon Woods – Gordon is a retired engineer who has been the Dam Keeper of the East Pond Coffin Dam since 2011. He goes to the dam on a regular basis, removes any debris, checks for structural issues, examines the reservoir above the dam and the stream below the dam, fills out an inspection sheet and notifies the North Pond Dam Keeper and the Belgrade Dam Committee of any gate changes. I am cannot obtain any further qualifications as he is presently out of the country and I am unable to reach him.

Exhibit A - East Pond Total Daily Maximum Load	Page 6 - 7
Exhibit B - Pictures of the East Pond Coffin Dam	Page 8 – 9
Exhibit C - Official East Pond Association Board of Directors Minutes	Page 10-13
Exhibit D - 2018 Official US Climate Data for Waterville, ME	Page 14-15
Exhibit E - Coffin Dam Inspection Sheet	Page 16
Exhibit F - March 2024 Belgrade Dam Committee Minutes	Pages 17-18

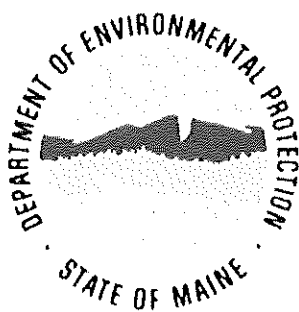
My testimony (Edith Cornwall East Pond Association President) would require 10 to 15 minutes.

If Gordon Woods, the East Pond Dam Keeper, testifies I assume he would need 10 to 15 minutes.

EAST POND

Somerset and Kennebec Counties

TOTAL MAXIMUM DAILY (ANNUAL) LOAD



Final Lakes TMDL Report

DEPLW 2001 - 10

Maine Department of Environmental Protection

6 September 2001

TMDL Summary Overview

This summary overview provides **East Pond** watershed stakeholders with a brief accounting of facts and figures from the attached East Pond TMDL technical report, prepared by the Maine Department of Environmental Protection (Maine DEP) with MACD (Maine Association of Conservation Districts) assistance.

Questions or comments should be addressed to Dr. David Halliwell, Lakes TMDL Project Leader, Maine DEP, State House Station #17, Augusta, ME 04333, 207-287-7649, david.halliwell@state.me.us.

NOTE - Phosphorus-based lake TMDLs are primarily designed to 'get a handle' on the magnitude of the Non-Point Source (NPS) pollution problem and to develop plans to implement Best Management Practices (BMPs) to address the problem. Landowners (residential, commercial, agricultural, silvicultural, municipal) and watershed/lake groups are eligible to receive further technical and financial assistance to effectively reduce lake watershed phosphorus loads to susceptible lakes (US-EPA and ME-DEP Project 319 funding and support).

Unique Properties - East Pond (698 hectares) is a relatively shallow, wind-driven, slow-flushing, spring-fed **groundwater seepage lake** with no permanent flowing inlets and a single outlet - Serpentine Stream. On occasion, during hurricanes and high-wind and storm events, this primary outlet can backflush phosphorus-rich waters into East Pond proper. The lake watershed is heavily developed on the southeastern shores with residential homes and commercially operated recreationally-based youth summer camps. The shoreline population of East Pond almost doubles in size with the addition of summer campers. Colby College (Waterville) has studied and characterized the East Pond and Serpentine Stream watershed (land use) both in 1991 and 1999, relative to existing water quality, algae blooms, and suggested strategies for remediation.

Historical vs. Current Water Quality - the water quality of East Pond has deteriorated over the past decade - with intense blue-green nuisance algae blooms prevalent during the summers of 1993-95 and 1998-99. Based on minimum water transparencies (2.7 - 3.4 meters), intense algae blooms were not evident during the summers of 1996-97, nor during the past summers of 2000 and 2001. A combination of internal (sediment) and external (watershed/shoreline) sources account for the in-lake nutrient (total phosphorus) loadings.

Water Quality Standards and Lake Target Goals - an in-lake total phosphorus (TP) concentration summertime target goal for East Pond of 15 ppb was selected to ensure the future attainment of water quality standards (Secchi disk transparencies 2 m or more and the absence of nuisance level, summer-time blue-green algae blooms).

Selection of Total Phosphorus Loading Coefficients - estimates of phosphorus export loadings (kg TP per hectare per year) were determined using local and regionally published export coefficients for representative land uses. Selection of actual values, ranging from low to high, reflect the relative effects of applied BMPs - as evaluated by best professional judgement. In the final analysis, high-level residential total phosphorus loadings were chosen to reflect the high-density residential and commercial summer-camp shoreline use. Generally, moderate-level estimates were selected for non-residential and commercial land uses (e.g., septic systems and roadways).

Coffin Dam Management

The dam and surrounding property is owned and maintained by the East Pond Association

Water flows as long as possible during the spring perch spawning

The dam is closed to:
Maintain the Water Supply for the Serpentine residents and Safe Levels in East Pond

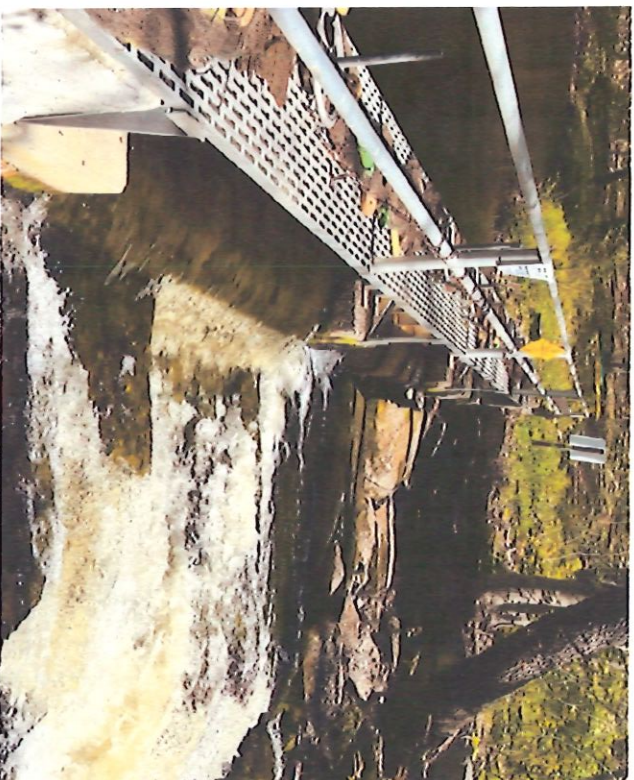
Reduce the risk of invasive plants entering North Pond during the pulling of Curly-leaf Pondweed

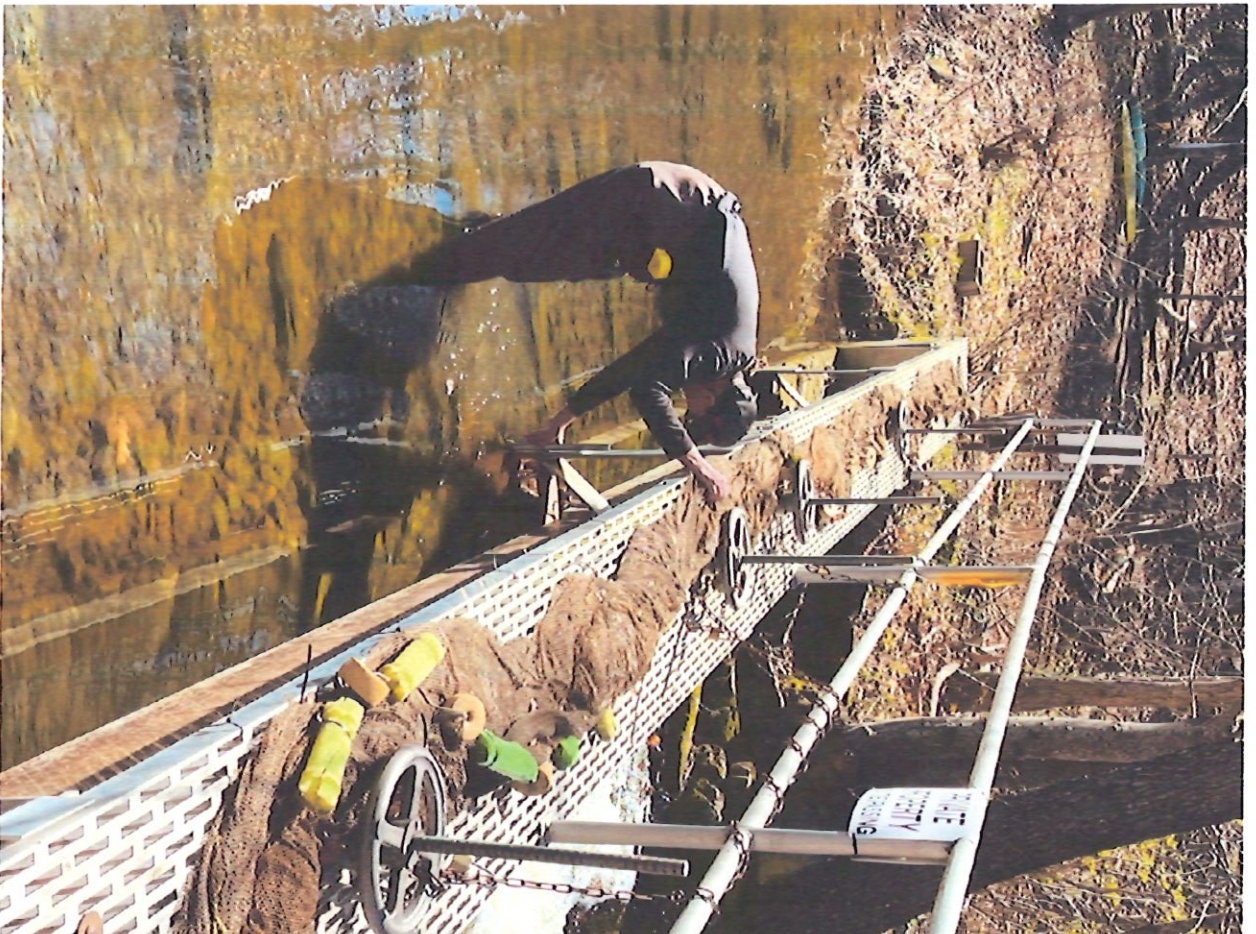
East Pond has no major inlets and must conserve water for the dry summer months
By August/September the water level may be below the spillway

**Please respect this Private Property
Thank You**

Sign at the East Pond Coffin Dam explaining our Management Procedures. Please note that East Pond does not have any major inlets and must conserve water for the dry summer months

The East Pond Coffin Dam – two 10 foot long by 12 inch high side by side aluminum boards with 4 wheeled mechanisms to raise and lower the gates. The net on the walkway is lowered during the pulling of Curly-leaf Pondweed to capture any fragments that might flow over the dam into Old Mill Stream, North Pond or the 5 other Belgrade Lakes.





This gentleman is standing in the water prior to the Coffin Dam. You can see that the water level is not even up to his knees. The Coffin Dam only controls 12 inches of water from 263 to 264 feet. The 4 hand wheels used to change the gate height are all visible. The seine net is lowered while the 7 Lakes Alliance Dive Team is pulling Curly-leaf Pondweed so that plant fragments are not carried over the dam thus spreading this noxious, highly invasive, aquatic plant.

Official Minutes

2018 East Pond Association Minutes

East Pond Association, Board Meeting: April 10, 2018

Topic	Discussion	Action
Call to Order & Attendance	Rob Jones called the meeting to order at 6:33 p.m. Attendance: Rob Jones, Mel Croft, Gordon Woods, Christine Keller, Gary Allison, Erik Rasmussen, Peter Redmond, John Norton, Jerry Tipper, Chris Stevens, and Charlie Baeder, 7 Lakes Alliance.	
Minutes	<ul style="list-style-type: none"> • Motion moved and seconded to approve the March 2018 minutes. 	Motion carried
Treasurer's report	President gave an overview of the treasurer's report. <ul style="list-style-type: none"> • Motion moved and seconded to approve the Treasurer's report. 	Motion carried.
1949 Coffin Dam	Gordon reported: <ul style="list-style-type: none"> • The dam is in good shape. 11" of water going over, small amount of debris, water is clear. There is no beaver debris currently, nor below the dam. No disrepair. • Christine noted there is beaver activity in the Serpentine region. 	

East Pond Association, Board Meeting: May 8, 2018

Topic	Discussion	Action
Call to Order & Attendance	Rob Jones called the meeting to order at 6:50 p.m. Attendance: Rob Jones, Gordon Woods, Christine Keller, Gary Allison, Erik Rasmussen, Peter Redmond, John Norton, Jerry Tipper, Ed & Edie Cornwall, Cindy Reese, Chris Stevens, Randie Martin, and Charlie Baeder, 7 Lakes Alliance.	
Minutes	<ul style="list-style-type: none"> • Motion moved and seconded to approve the April 2018 minutes. 	Motion carried.
Treasurer's report	President gave an overview of the treasurer's report. <ul style="list-style-type: none"> • Motion moved and seconded to approve the Treasurer's report. 	Motion carried.
1949 Coffin Dam	Gordon reported: <ul style="list-style-type: none"> • 8.5-9" of water going over, water is close to high water mark, is clear. Debris - only one branch to move. • For alum treatment, keep at min 6" – leave on the high side for the alum treatment barge. 	Gordon will keep water level on the higher side.

East Pond Association, Board Meeting: June 12, 2018

Topic	Discussion	Action
Call to Order & Attendance	Vice President Edie Cornwall called the meeting to order at 6:30 p.m. Attendance: Gary Allison, Ed Cornwall, Mel Croft, Randie Martin, Erik Rasmussen, Peter Redmond, Cindy Reese, Chris Stevens, Jerry Tipper, Gordon Woods, Charlie Baeder, 7 Lakes Alliance, Whitney King, Colby College with John Norton and Rob Jones via phone.	
Minutes	• Motion moved and seconded to approve the May 2018 minutes.	Motion carried.
Treasurer's report	Vice President gave an overview of the treasurer's report. • Glassware was ordered . • We received \$19.37 from Amazon Smile • Motion moved and seconded to approve the Treasurer's report.	Motion carried.
1949 Coffin Dam	Gordon reported: • Dam Boards were closed on May 14 with 7 ½ inches of water on the boards. Today there was only 3 inches of water on the boards. We need rain • Debris – Boards are clear, but there is some debris below the dam • Charlie Baeder requested that the boards remain in place until the fall Alum Treatment is complete as a larger barge will be in service by that time.	Gordon will keep water level on the higher side if possible.

East Pond Association, Board Meeting: July 21, 2018

Topic	Discussion	Action
Call to Order, Welcome & Attendance	President Rob Jones called the meeting to order at 10:04 a.m. 77 Members of the community attended, including board members: President Rob Jones, VP Edie Cornwall, Treasurer David Jackson, Dam Operator Gordon Woods, Gary Allison, Ed Cornwall, Mel Croft, Randle Martin, John Norton, Erik Rasmussen, Peter Redman, Cindy Reese and Jerry Tipper. Guests: Charlie Baeder (7 Lakes Alliance), Whitney King (Colby College)	
Minutes	• Motion was moved and seconded to approve the July 2017 Minutes.	Motion carried.
Treasurer's report	Treasurer David Jackson gave an overview of the annual budget. • Motion was moved and seconded to approve the Treasurer's report. • There are 354 properties on East Pond with 280 landowners. Last year East Pond Association had 133 members. To date 75 paid members. David proposed a challenge to get at least 50% of the landowners to join. • An attendee suggested we post the list of members on the website. David suggested we discuss it at the next Board mtg.	Motion carried.
1949 Coffin Dam	Dam Operator Gordon Woods reported: • Dam was shut on May 14 th to keep depth for Alum Treatment • Beaver population is currently under control, minor Spring clean-up • Water is low with only 1½ inches on the boards due to lack of rain.	

There was no East Pond Board Meeting in August of 2018

East Pond Association, Board Meeting: September 11, 2018

Topic	Discussion	Action
Call to Order & Attendance	Rob Jones called the meeting to order at 6:30 p.m. Attendance: Rob Jones, Gordon Woods, Christine Keller, Gary Allison, Peter Redmond, Jerry Tipper, Ed & Edie Cornwall, Cindy Reese, Chris Stevens, John Norton, Randie Martin, David Jackson, and Laura of 7 Lakes Alliance.	
Minutes	<ul style="list-style-type: none"> • Motion moved and seconded to approve the June 2018 minutes as amended. 	Motion carried.
Treasurer's report	<p>The Treasurer gave an overview of the treasurer's report:</p> <ul style="list-style-type: none"> • Membership increased the general fund by \$3k, he is concerned about the invasive fund down- \$1k. We have not received the \$1,100 donation from the municipality of Oakland, anticipate \$2k forthcoming from Alden Camps, and we still have 2nd bill forthcoming from 7LA \$5400 that will leave invasive fund in the negative. • Motion moved and seconded to approve the Treasurer's report. • Motion moved and seconded to authorize the EPA Treasurer and EPA President to transfer funds to Kennebec Savings Bank in support of current bridge loan up to \$30,000. 	<p>Motion carried.</p> <p>Motion carried.</p>
Bridge Loan MOU	<p>Polled by email 9/2/2018:</p> <ul style="list-style-type: none"> • Motion moved and seconded to authorize EPA President Jones to sign on behalf of East Pond Association, the MEMORANDUM OF UNDERSTANDING BETWEEN EAST POND ASSOCIATION AND BELGRADE REGIONAL CONSERVATION ALLIANCE D/B/A 7 LAKES ALLIANCE for up to \$175,000. • Jerry facilitated the updated pledge letters from Camp Manitou & Camp Matoaka to meet the requirements. 	Motion carried.
1949 Coffin Dam	<p>Gordon reported:</p> <ul style="list-style-type: none"> • Dam continues to be closed as it has been since May 14th. • Water level is low and equal to bottom of boards. • Water relatively clear, there is minor beaver debris. • Leaving dam closed until 2nd alum treatment is complete (October). • The larger barge design that will be utilized will be easier to get in and out. • Serpentine residents Keith and Robin Richards attended the 7LA annual meeting, met with Mel and inquired about a resigned member's proposal of dam removal and the subsequent property value loss and lake access loss Serpentine residents have purposefully invested in. The couple was assured there is no plan or consideration of dam removal. 	

East Pond Association, Board Meeting: October 11, 2018

Topic	Discussion	Action
Call to Order & Attendance	Rob Jones called the meeting to order at 6:30 p.m. Attendance: Rob Jones, Mel Croft, Gordon Woods, Christine Keller, Gary Allison, Peter Redmond, Jerry Tipper, Ed & Edie Cornwall, Cindy Reese, Chris Stevens, John Norton, Randie Martin, David Jackson, Charlie Baeder and Laura of 7 Lakes Alliance.	
Minutes	• Motion moved and seconded to approve the September 2018 minutes as amended.	Motion carried.
Treasurer's report	The Treasurer gave an overview of the treasurer's report: • Invasive plant fund – member donations, final installment 7LA will leave us <-\$4k> negative, \$1100 from Oakland is forthcoming, still anticipate Alden camps annual contribution. • Dave & Rob completed transferred \$30k to KSB money market account; still have TD Bank money market & checking account. Will review over time. The 2% expired; but they made good on that (vs ½ % at TD Bank). • Started Pay Pal & link, pending Rob Levine's assistance, preference is to have differentiation for various allocations, check boxes for membership, LakeSmart, CBI etc. • Motion moved and seconded to approve the Treasurer's report.	Motion carried.
1949 Coffin Dam	Rob reported: • Gordon was at the dam this week, no water going over, will put up boards after treatment.	
	There was no East Pond Board Meeting in November of 2018	

East Pond Association, Board Meeting: December 11, 2018

Topic	Discussion	Action
Call to Order & Attendance	Rob Jones called the meeting to order at 6:30 p.m. Attendance: Rob Jones, Gordon Woods, Christine Keller, Gary Allison, Peter Redmond, Mel Croft, Jerry Tipper, Ed & Edie Cornwall, Cindy Reese, Chris Stevens, John Norton, Randie Martin.	
Minutes	• Motion moved and seconded to approve the October 2018 minutes as amended.	Motion carried.
Treasurer's report	Rob on behalf of David: • Invasive fund started in the red, now in the black – Alden Camps contribution was higher than anticipated. There is an outstanding CBI bill to be paid. • Motion moved and seconded to approve the Treasurer's report.	Motion carried.
1949 Coffin Dam	Gordon reported: • Went to dam today, 6" flowing over dam, both gates are open, no beaver debris.	

Weather history Waterville - May 2018



	May 18		Normal
Average high temperature	68.9 °F	↗	66 °F
Average low temperature	44.5 °F	↗	43 °F
Total precipitation	0.87 inch	↘	3.79 inch

	Jun 18		Normal
Average high temperature	73.6 °F	↘	75 °F
Average low temperature	50.0 °F	↘	53 °F
Total precipitation	2.52 inch	↘	4.00 inch

	Jul 18		Normal
Average high temperature	82.6 °F	↗	80 °F
Average low temperature	61.0 °F	↗	58 °F
Total precipitation	2.99 inch	↘	3.55 inch

	Aug 18		Normal
Average high temperature	82.1 °F	↗	79 °F
Average low temperature	60.9 °F	↗	57 °F
Total precipitation	2.28 inch	↘	3.45 inch

	Sep 18		Normal
Average high temperature	73.2 °F	↗	71 °F
Average low temperature	51.3 °F	↗	49 °F
Total precipitation	3.17 inch	↘	3.79 inch

In 2018 in Waterville, ME the Total Precipitation was down each month from May until September.

East Pond Coffin Dam Inspection
Serpentine, Somerset County, Smithfield, ME
Latitude: 44.37.791. Longitude 69.49.666

Date:	Time:		Inspectors:
Item	YES	NO	Remarks
Dam Crest:			
Flashboard Placement			
Flow Going Over Spillway			
Debris at Spillway			
Type of Debris at Spillway			
Maintenance Performed			
Dam Structure:			
Erosion of Concrete Structure			
Cracking of Concrete Structures			
Change in Size of Cracks			
Drains or Weep Holes			
Spillway Obstruction			
Abutment Seepage			
Upstream Reservoir:			
Shoreline Erosion			
Tree and Brush Deadfall			
Leaves and Plant fragments			
Beaver Activity			
Sedimentation			
Ice Related Issues			
Downstream:			
Channel Erosion			
Obstructions and Debris			
Maintenance Needed			
Emergency Management Plan:			
Plan Initiated			
Change in Downstream Structures:			
Inspection Satisfactory			Action Needed:
Inspection Unacceptable			Priority:
Other:			

BELGRADE AREA DAMS COMMITTEE

March 11th, 2024 @ 4:00 PM, Belgrade Town Office

In attendance: Craig Alexander (Chair), Dick Greenan, Tom Bennett, Blaine Horrocks, Matthew Zeh, Cameron McCafferty, Boyd Snowden, Don Borman, Garrett Luszccki (Secretary)

Guests: Gordon Woods (East Pond), Edie & Ed Cornwall (East Pond), Hans Rasmussen (Code Enf.)

- **Meeting Commencement:**
 - Meeting called to order by Craig at 4:05pm.
- **Previous Meeting Minutes:**
 - Dick made a motion to accept the February minutes, Tom second. All in favor.
- **Current Dams Levels:**
 - Craig stated Great Pond was 247.9' (approx. 3" above full, G@20" open)
 - Tom stated Long Pond was 238.9' (approx. 8.5" above full, G1@7'5" & G2@7' open)
 - Cam stated Salmon Lake was 277.9' (approx. 1.5" below full, G@ min flow)
 - Dick stated Snow Pond was 235.1' (approx. 3.3" below full pond)
- **Lake Levels Strategy Discussion:**
 - The last 10 days has produced 5.71" of rain.
 - Long Pond has peaked from the most recent storm.
 - Great Pond will continue to hold water until Long Pond drops. Ideally end of week.
 - Salmon is still rising but will wait to open and coordinate with Great Pond when it opens
 - We have lost nearly all snowpack for spring runoff. Will maintain current water levels as practical looking ahead to spring.
- **New Maintenance:**
 - Craig confirmed both the Village and Wing's Mill dams have generator hookups located on the back of the service box. Hookup cables are located at the Belgrade town maintenance building and have been labeled.
 - The Salmon Lake Dam datalogger has come free from its mount again. Dick will coordinate with Steve Liberty to get this remounted.
- **Old Business:**
 - 2024 Budget Request Update:
 - The Rome meeting stalled and will reconvene 5/18 at 10am.
 - Schedule Dams walk-throughs with new members – Lorna, Boyd, Mike and Edie:
 - Craig will attempt to coordinate with team as weather improves.

- Wing's Mill gate 1 repair:
 - Tabled until Spring. This will be a warm weather issue to repair.
- **New Business:**
 - The Dams Committee reviewed attendees for upcoming town meetings and coordinated for town meetings support.
 - Scott Davis and Jason Seiders from Maine Inland Fisheries and Wildlife came to discuss water levels:
 - They have noticed our recent rise and fall of water levels, managing and trying to maintain control while ensuring we can achieve spring targets without flooding.
 - Scott and Jason discussed the transition of stocked salmon to stocked rainbow trout in Long Pond several years back. Salmon spawn in fall, rainbow trout in spring.
 - The ideal target is maintaining steady flow to attract the fish in the spring. This is difficult to balance in the spring when holding back Great Pond and Salmon Lake to help keep Long Pond from flooding, but the committee can aim to achieve as feasible.
 - The dams committee offered to add Scott and Jason to the daily water levels email. Dick will add them.
 - Edie asked about any recommendations for the white perch at the East Pond Dam. Scott and Jason indicated there isn't much concern with white perch given how prolific they are in the lakes.
 - Edie raised concern about runoff with high sediment in recent rains on the East Pond road near the East Pond boat launch. Unfortunately, this is outside their area of influence.
 - Edie asked if they have any recommendations in regard to the Curly Leaf Pond Weed net and a removable mount at the dam. Scott and Jason recommended DEP as the best option for insight and assistance with this.
- **Report from East Pond Guest(s):**
 - Gordon reported water levels are high at the East Pond dam. Water is 18" over the dam, 6" over the fixed concrete of the dam. Significant flow with recent rains.
- **Next Meeting:**
 - Scheduled for Monday, April 8th, 4pm at the Belgrade Town Office.
- **Meeting Adjournment & Post-Meeting Discussion**
 - Dick made a motion to adjourn, 2nd by Tom. All in favor. Adjourned 5:00pm.

Intervenor Affidavit Attestation:

I do hereby attest this submission in entirety and content thereof is true, accurate and complete to the best of my knowledge.

Edith Cornwall

Signature

January 22, 2025

Date

Edith Cornwall

Printed

January 22, 2025

Date

Maine State Notary Acknowledgement

State of Maine, County of Kennebec

The foregoing instrument was acknowledged before me this 22 January 2025
(date) at Waterville

Maine, by Edith Cornwall
(name of person acknowledged) to be her free act and deed.

E. Llewellyn

(Notary Public Signature)

Elizabeth Llewellyn

Printed Name of Notary Public)

Notary Public State of Maine

My Commission Expires:

