

B-27-3

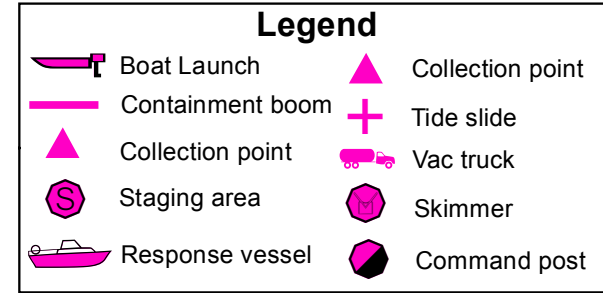
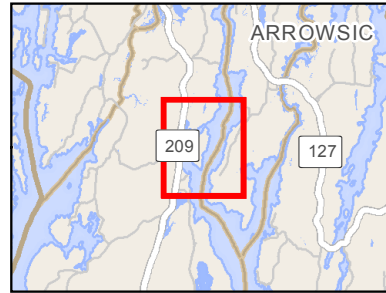
Lower Kennebec River / Drummors Bay

Phippsburg

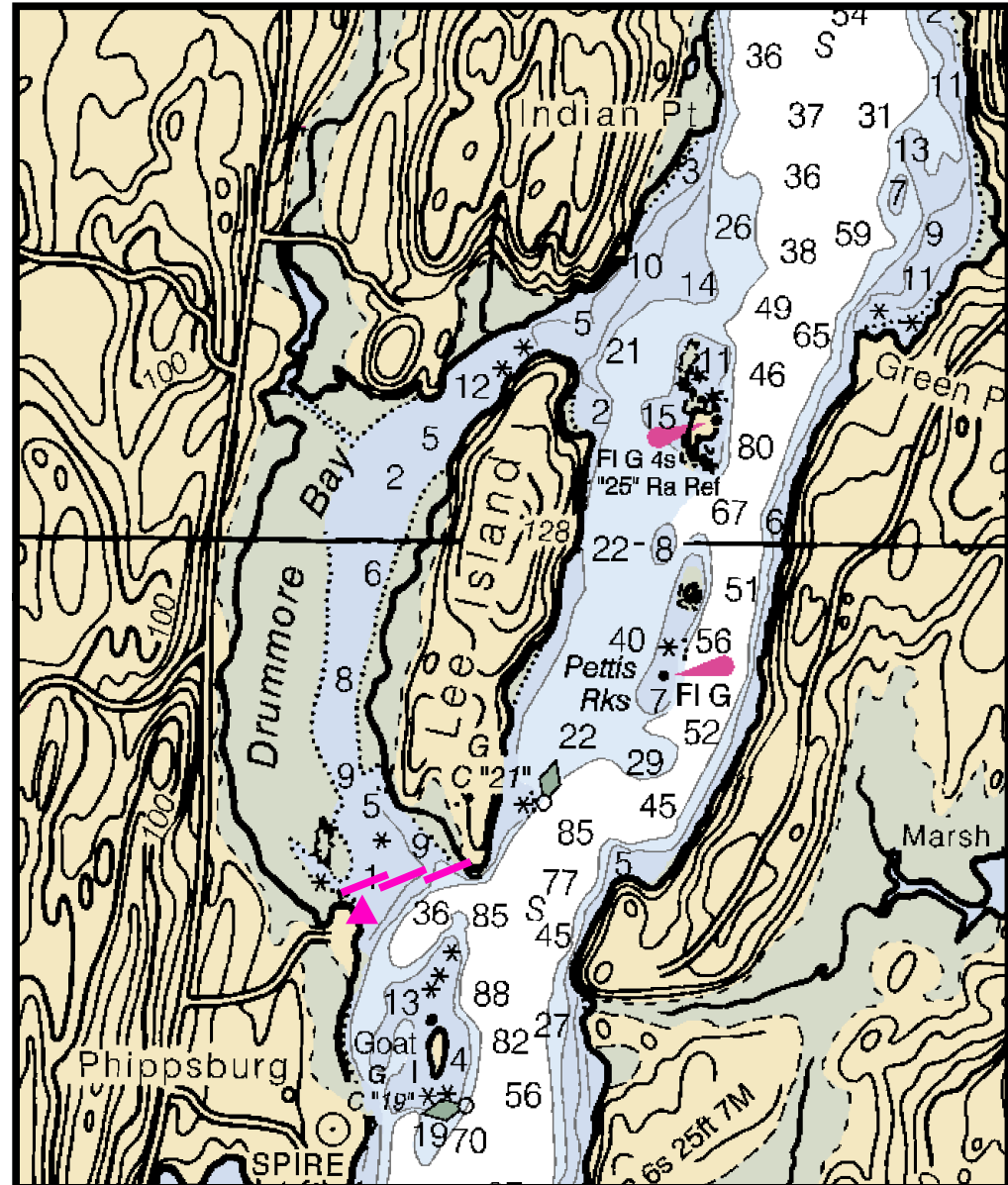
0 1,000 2,000
Feet



Printed: 3/30/2018



Source: Esri, DigitalGlobe, GeoEye, Earthstar
Geographics, CNES/Airbus DS, USDA, USGS,
AeroGRID, IGN, and the GIS User Community



Lower Kennebec River / Drummores Bay

Town Phippsburg

Port Region Casco Bay

Latitude 43° 49.522'N **Longitude** -69° 48.458'

Strategy B-27-3

NOAA Chart # 13293 **ESI Map #** 46A

EVI Map # 19

Resources At Risk

ESI Shoreline Type(s) Riprap
Exposed, rocky shores

Environmental Concerns Shorebird area, saltmarsh

Strategy Information

Strategy Purpose To divert/exclude oil from Drummores Bay and adjoining marsh

Work Assignment Deploy three 400 foot sections of boom between Phippsburg mainland and Lee Island

Staging Areas Possibly at parking area off of Cranberry Point Road off of Rte. 209 in Phippsburg, Kennebec River launch, Fiddler's Reach Road, Phippsburg.

Site Access By water. Possible collection or staging from vicinity of 57 Cranberry Point Road, Phippsburg

Nearest Boat Ramp Kennebec River boat launch, Fiddler's Reach Rd., Phippsburg

Collection Points Possibly from vicinity of 57 Cranberry Point Road, Phippsburg

Approx. Tidal Range (feet) 10

Max Current (knots) **Flood** **Ebb** **Source**

Special Instructions

Recommended Equipment / Resources

Length of Boom (feet) 1200 **Type of Boom** 12" - 18" containment boom

Recommended Equipment (Minimum)

- 4 - anchor systems: 35 lb. Danforth or equivalent and line for 3:1 scope plus tag line with buoy.
- 2 - shoreside connections
- 1 - vacuum truck or skimmer and storage
- 2 - workboats with minimum 90 hp
- 2 - boat operators
- 4 - laborers

Unless otherwise indicated, the boom length given is the distance measured on the chart. Actual length required may vary with conditions.